

Water Supply Update

Board of Directors Meeting

February 13, 2019

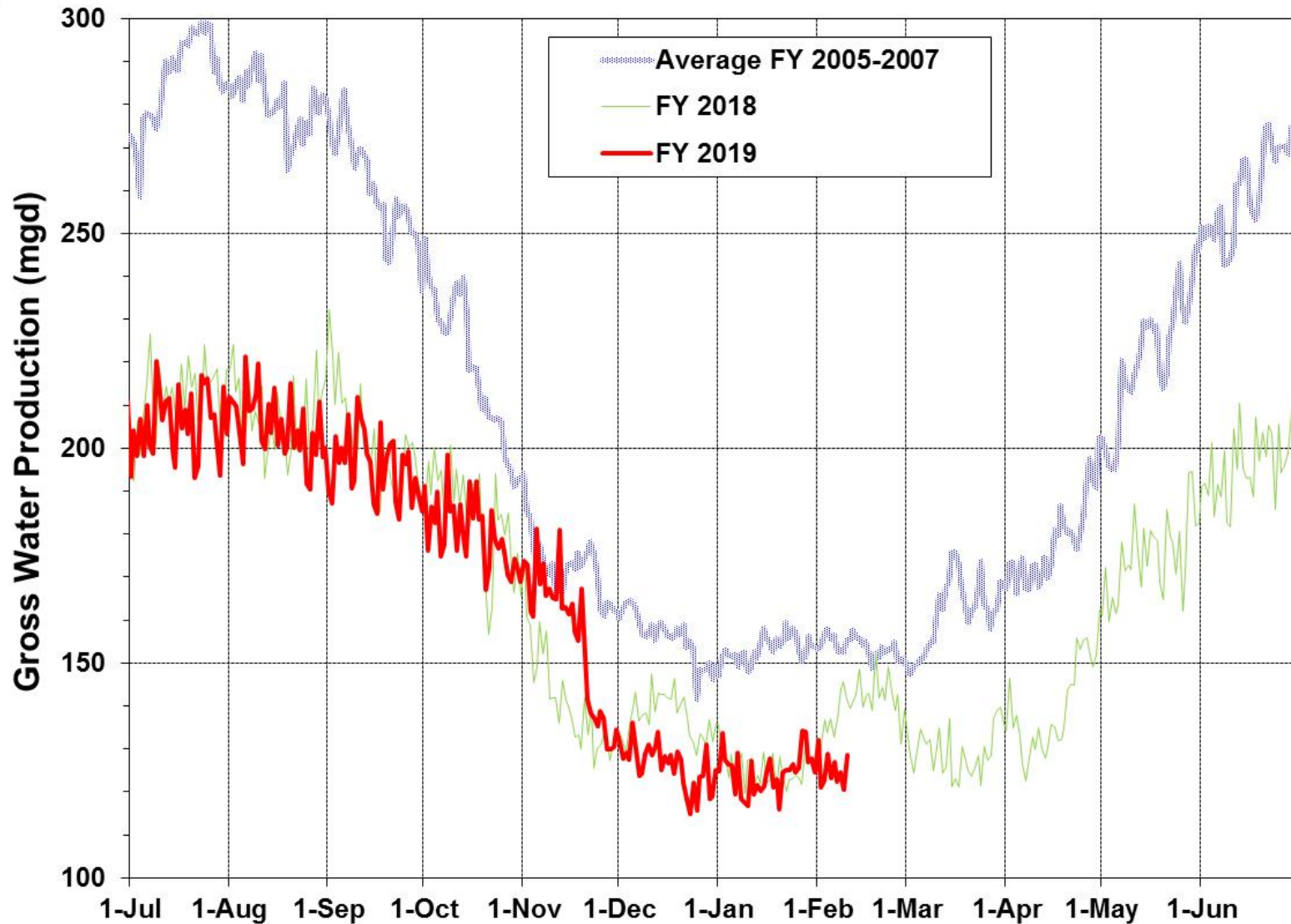
Water Supply Briefing

- Current Water Supply
- Water Supply Projections



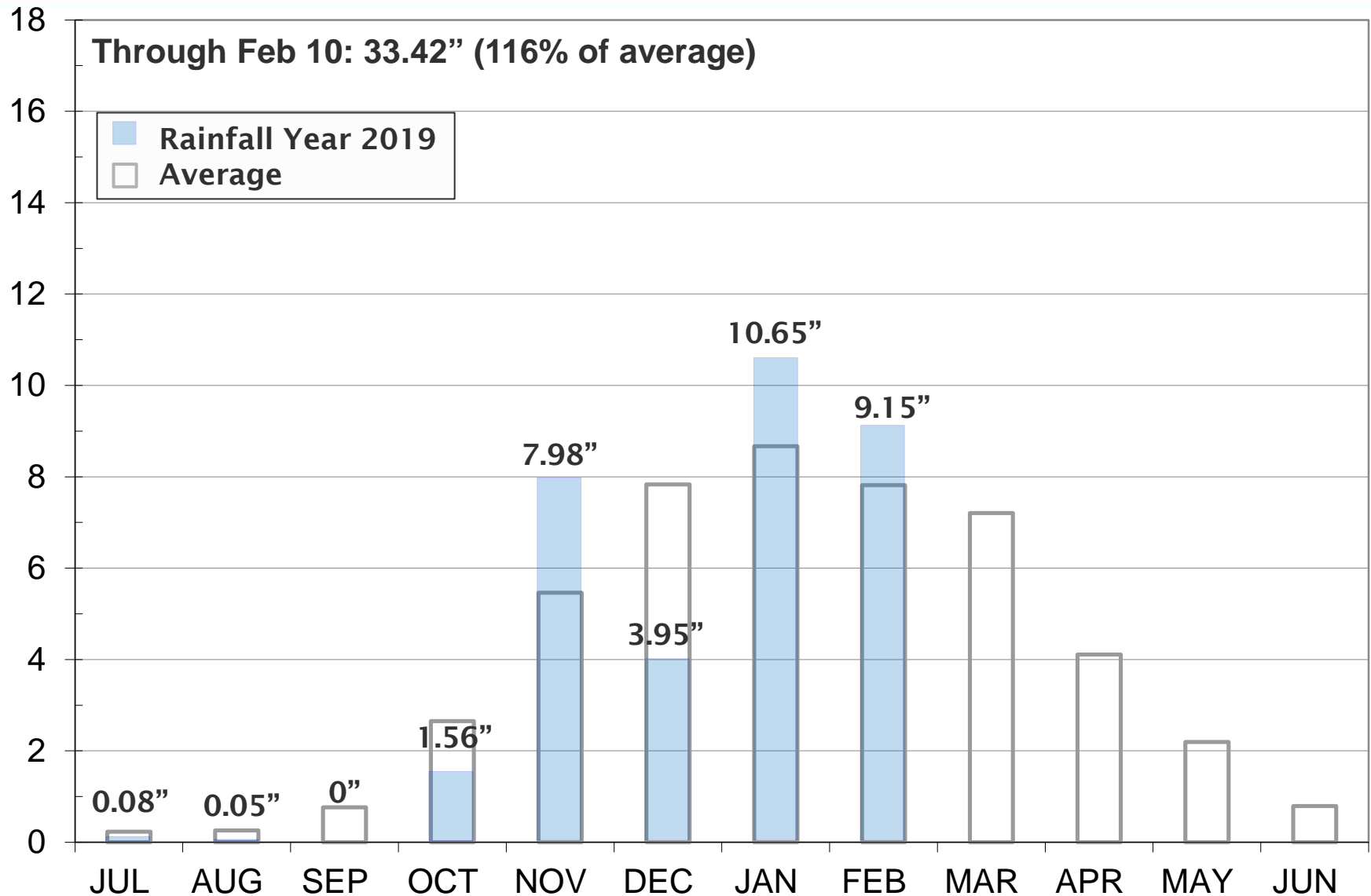
Current Water Supply

Gross Water Production



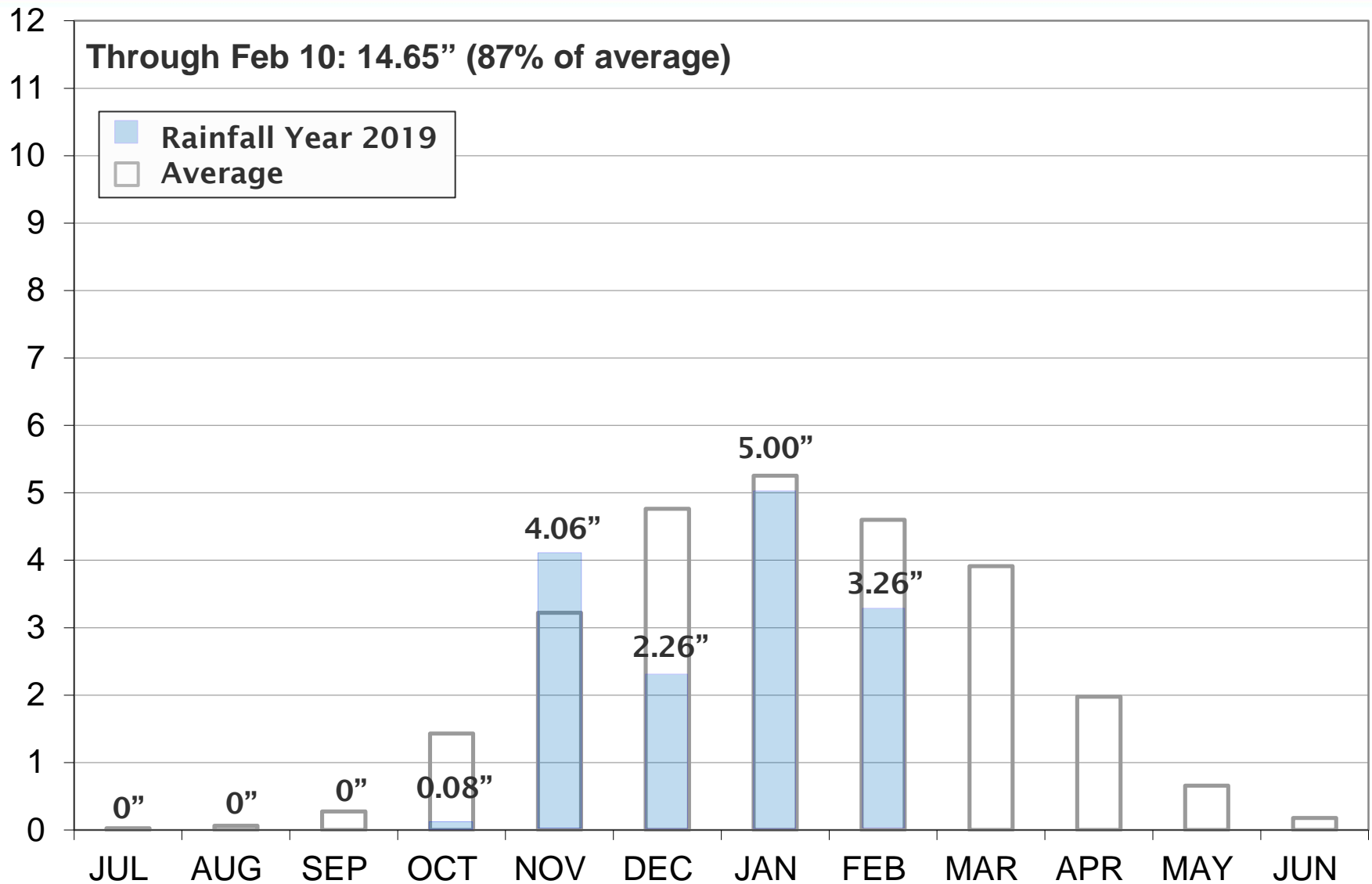
Current Water Supply

Mokelumne Precipitation



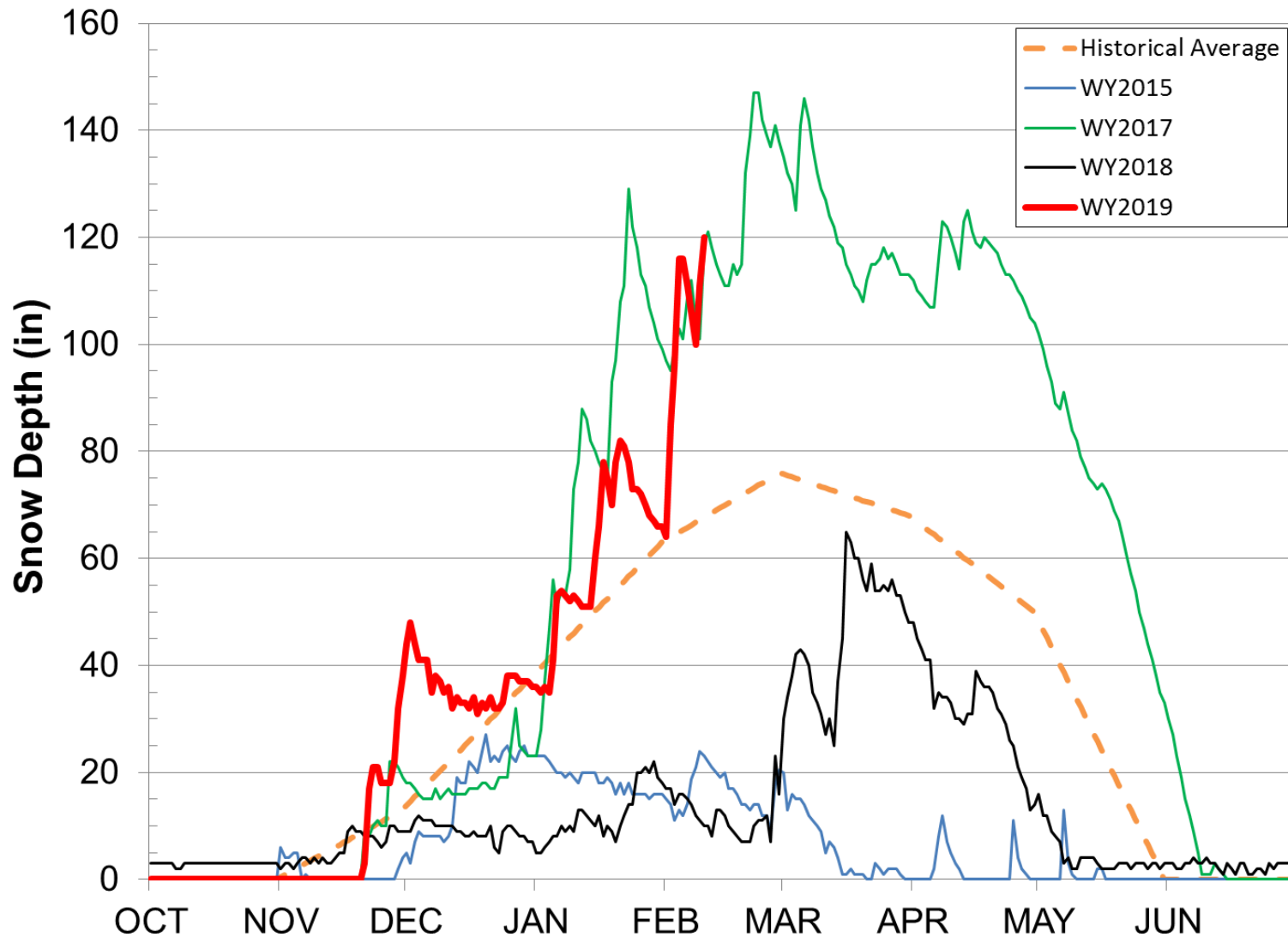
Current Water Supply

East Bay Precipitation



Current Water Supply

Caples Lake Snow Depth



Current Water Supply

Snow



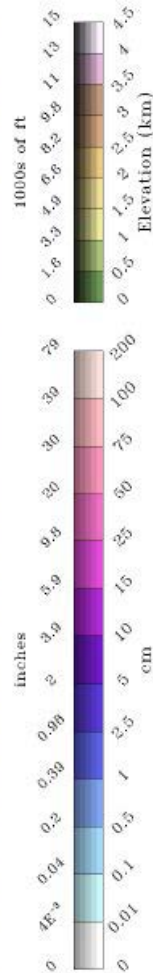
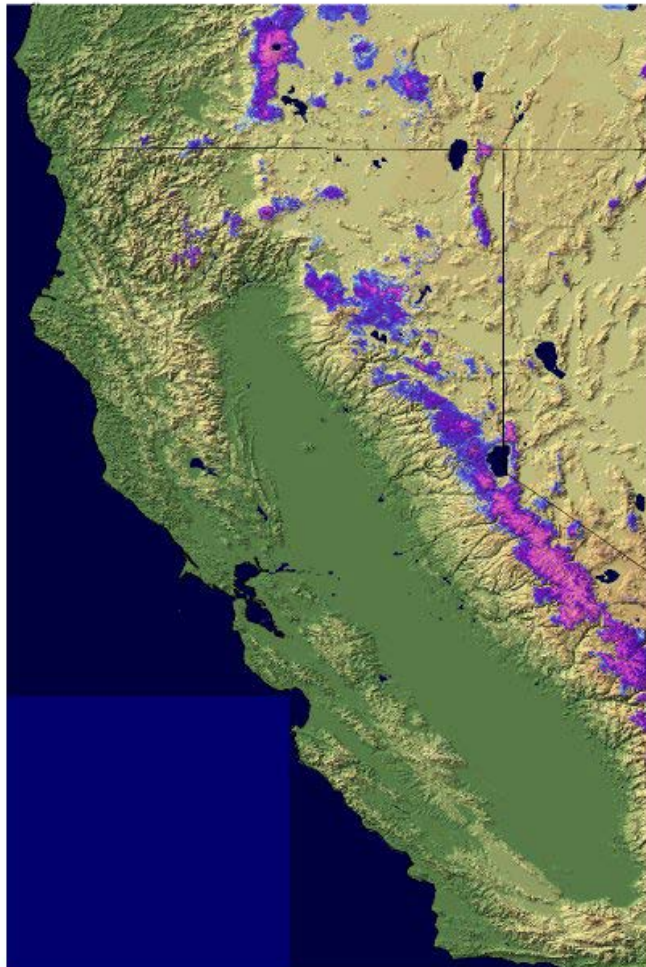
As of Feb. 10, 2019	Cumulative Precipitation	% of Average
Caples Lake Snow Depth	120"	177%
Caples Lake Snow Water Content	37.5"	164%

California Water Supply

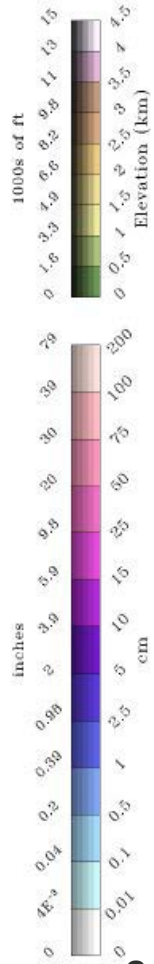
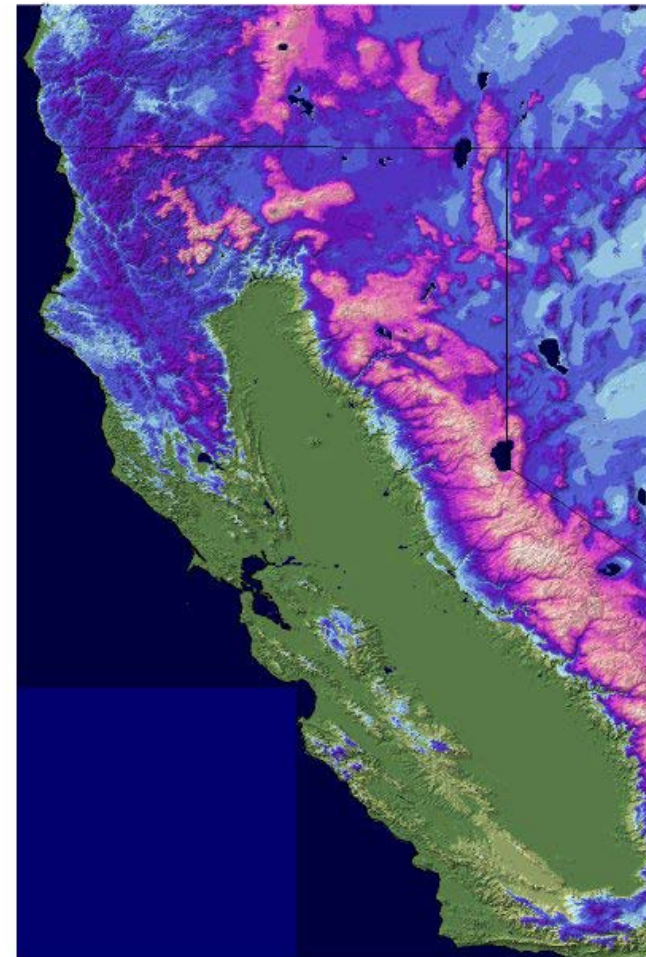
Snow Water Equivalent



February 11, 2018



February 11, 2019



Current Water Supply

Reservoir Storage



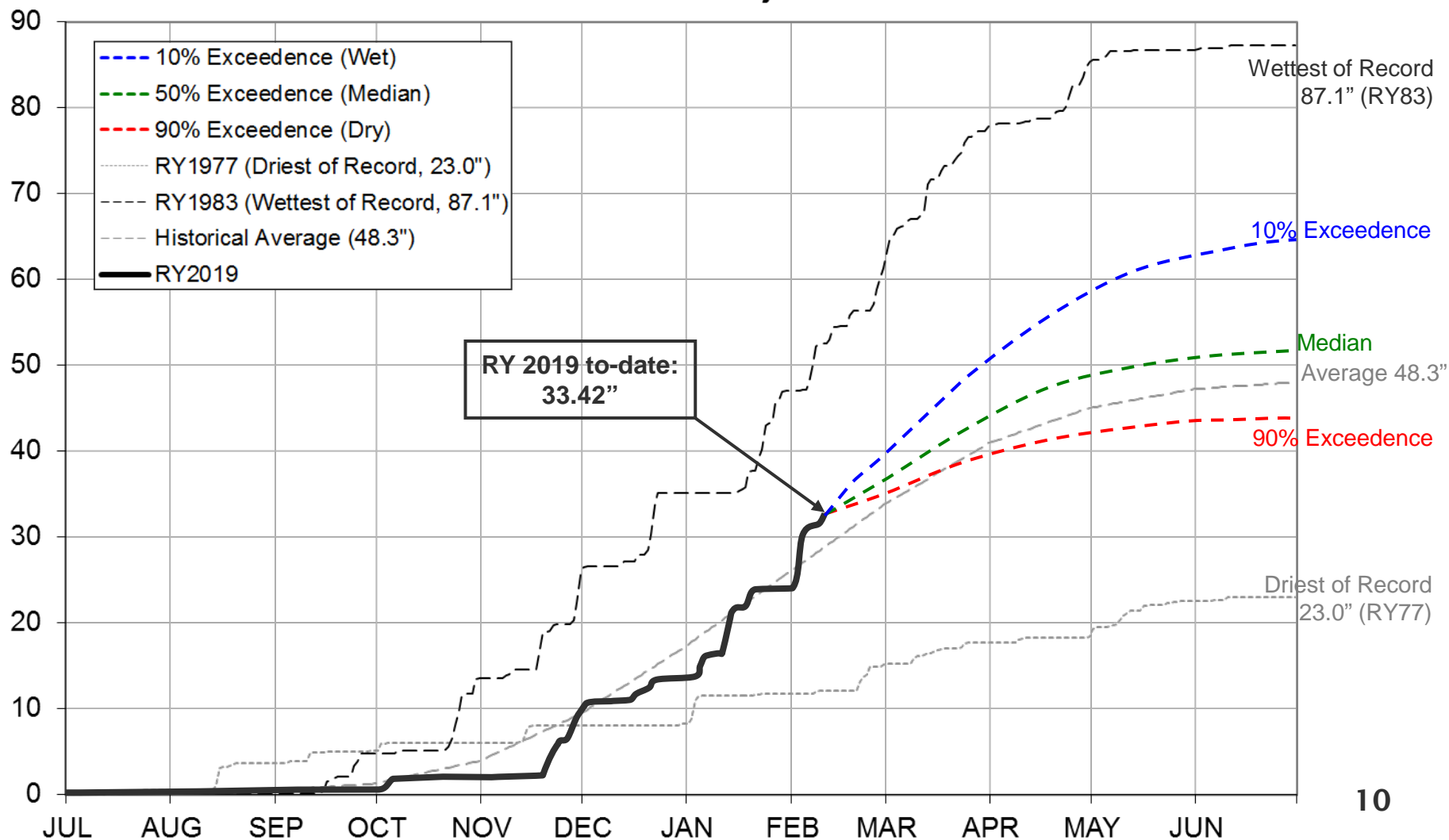
As of 2/10/2019	Current Storage	Percent of Average	Percent of Capacity
Pardee	182,140 AF	101%	89%
Camanche	322,120 AF	122%	77%
East Bay	119,850 AF	93%	80%
Total System	624,110 AF	109%	81%

Water Supply Projections

Mokelumne Precipitation Rainfall Year 2019



Mokelumne 4-Station Average Precipitation (in)
Rainfall Year 2019 Projection

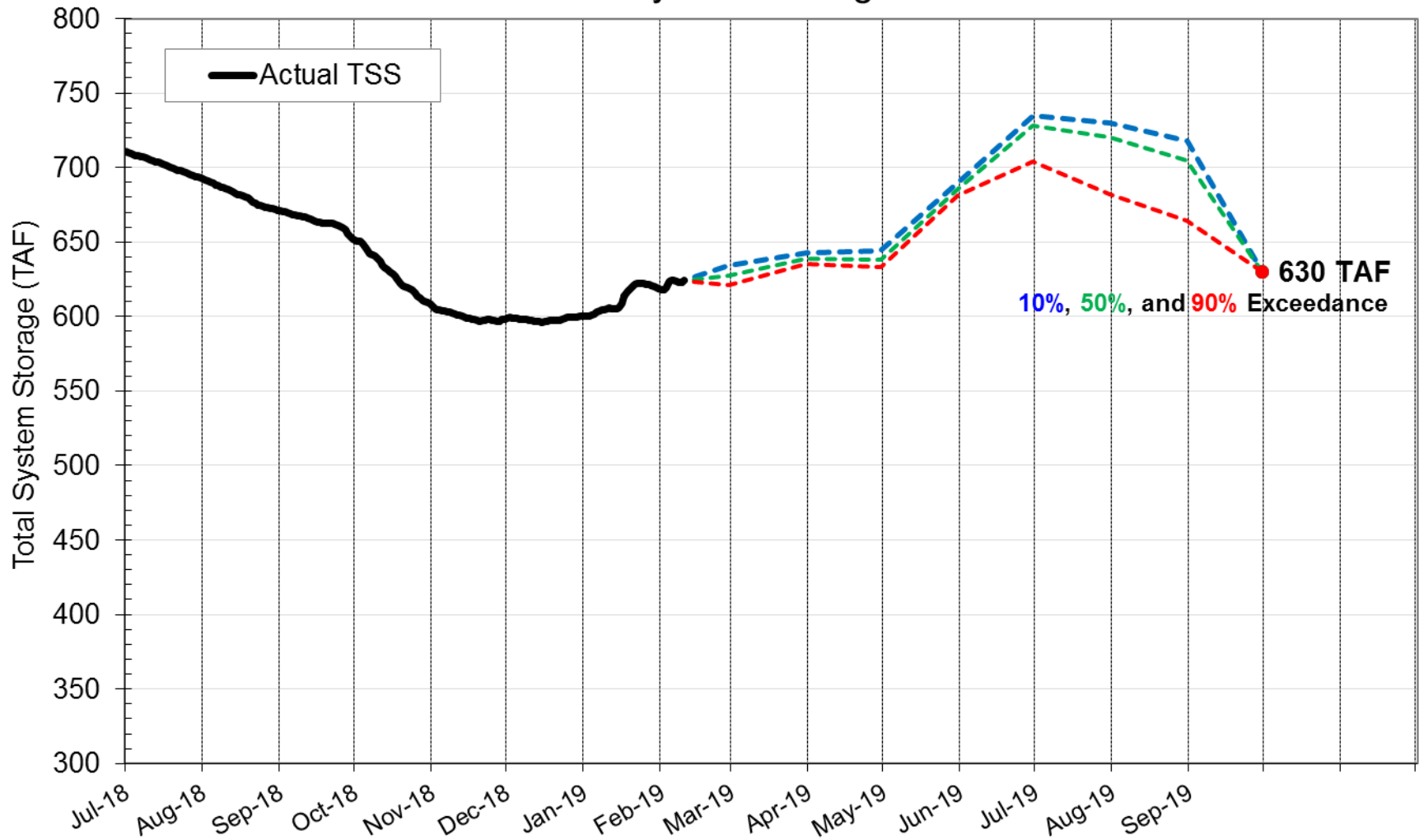


Water Supply Projections

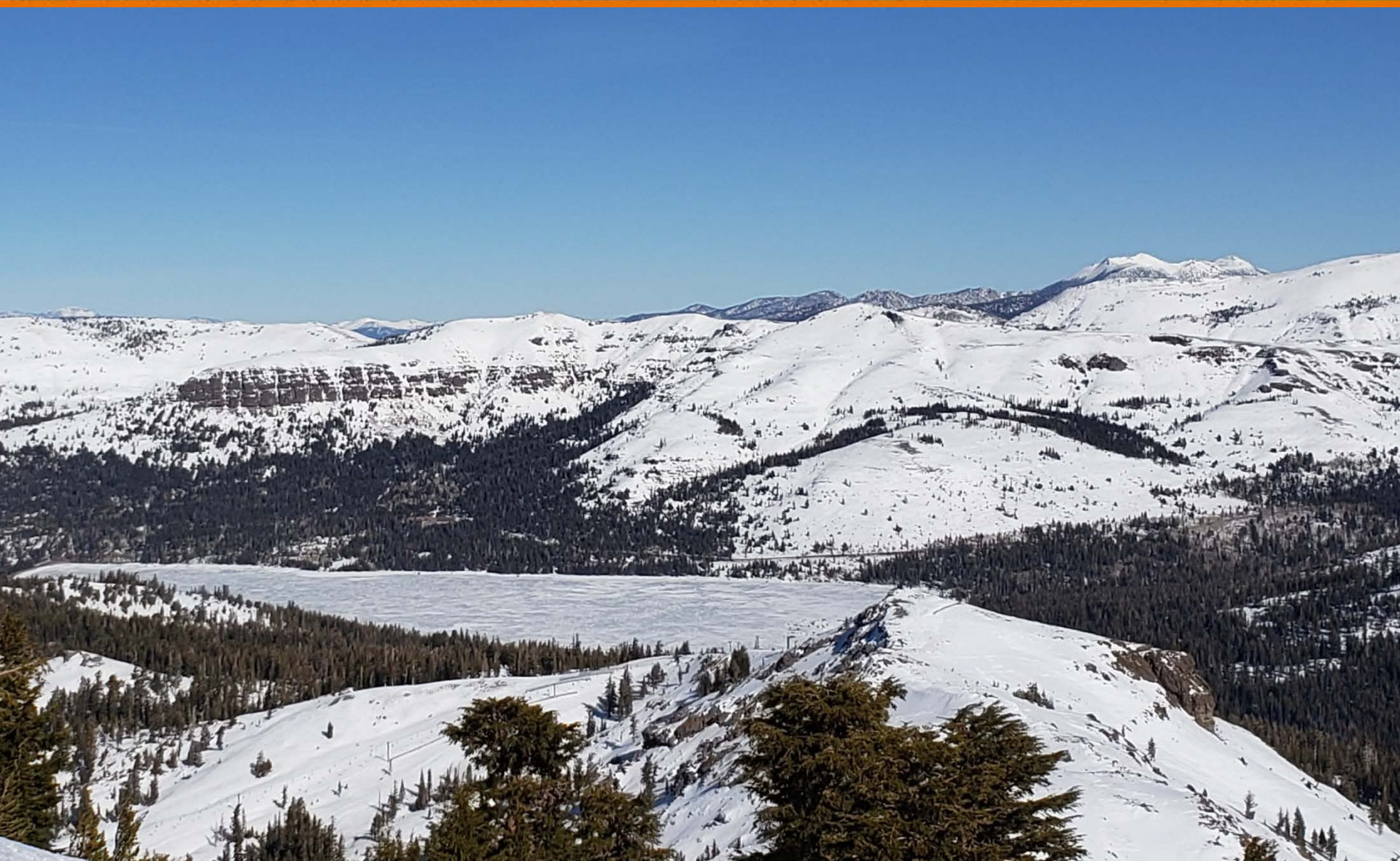
Projected 2019 EBMUD Total System Storage



EBMUD Total System Storage WY2019



Questions ?



WATER SUPPLY ENGINEERING DAILY REPORT

Tuesday, February 12, 2019

RESERVOIR STORAGE AND ELEVATION

	<u>WATER SURFACE</u>		<u>STORAGE</u>		<u>MAXIMUM CAPACITY</u>		Release	Spill
	Elevation	+Gain		+Gain	Elevation	Storage		
	Feet	-Loss	Ac-Ft	-Loss	Feet	Ac-Ft	Cfs	Cfs
<u>MOKELUMNE</u>								
Pardee	556.62	-0.52	180140	-1070	567.65	203795	1341	0
Camanche	221.99	-0.06	321790	-400	235.5	417120	1531	0
<u>EAST BAY</u>								
Briones	555.31	0.07	45170	50	576.14	58960	0	0
Chabot	224.9	0.04	9570	20	227.25	10350	0	0
Lafayette	439.85	0.04	3140	0	449.16	4250	0	0
San Pablo	305.93	-0.01	31730	-10	313.68	37915	0	0
Upper San Leandro	448.27	0.18	30580	110	459.98	38905	0	0
Total East Bay Res.			120190	170		150380		
TOTAL SYSTEM STORAGE			622120	-1300		771295		

<u>DISTRIBUTION SYSTEM</u>			<u>MOKELUMNE SYSTEM</u>		
<u>DISTRIBUTION RESERVOIRS</u>			<u>AQUEDUCT DELIVERIES</u>		
	Storage	Operating		<u>MG</u>	<u>Flow Conditions</u>
	<u>MG</u>	<u>Capacity</u>	Line 1	37.4	GRAVITY
Today	338	720	Line 2	85.5	PUMPING
Total Previous Day	312		Line 3	0	SHUTDOWN
Total Change	26		TOTAL	122.9	190 Cfs
<u>WATER PRODUCTION</u>	Million	Capacity	<u>FSCC to MOK AQUEDUCTS (Measured at Brandt), MG</u>		
<u>AND DEMAND</u>	<u>Gallons</u>	<u>MGD</u>	Mok 1	0	
Lafayette WTP	0	25	Mok 2	0	
Orinda WTP	94	190		0 MG	
San Pablo WTP	0	30	<u>RIVER FLOWS AND RELEASES</u>		<u>Cfs</u>
Sobrante WTP	34.8	50	Mokelumne River Natural Flow		834
Upper San Leandro WTP	0	45	Pardee Reservoir Inflow		996
Walnut Creek WTP	23.8	90	Pardee Release to Camanche Res.		1341
<u>TOTAL SURFACE PRODUCTION</u>	152.6	430	Pardee Release to JVID		0
Miscellaneous(Estimated)	0.4		Camanche Release to Mokel. River		1531
<u>TOTAL WATER PRODUCTION</u>	153		<u>PG&E CO. STORAGE (Acre-feet)</u>		
Change in Distribution System	26			<u>Storage</u>	<u>Change</u>
Wash Water from Distribution Sys.	0.4				<u>Maximum Capacity</u>
<u>SYSTEM DEMAND</u>	126.5		Old Reservoirs	9165	-45
East-of-Hills Demand	24.4		Salt Springs Res.	17797	-252
West-of-Hills Demand	102.1		Lower Bear Res.	9008	-24
			Total	35970	-321

<u>RAW WATER TRANSMISSION</u>			<u>PRECIPITATION (Inches)</u>				
	<u>INPUT</u>	<u>DRAFT</u>	<u>THIS YEAR</u>		<u>AVERAGE YEAR</u>		
Briones Res.	0	0	<u>STATION</u>	<u>Today</u>	<u>This Month</u>	<u>Season to-Date</u>	<u>Season to-Date</u>
San Pablo Res.	16	110					
U. San Leandro Res.	0	0	USL WTP	0.27	3.26	14.78	16.34
<u>TOTAL</u>	16	110	Orinda WTP	0.27	4.57	21.54	20.37
<u>REMARKS</u>			Lafayette Reservoir	0.26	3.78	15.05	18.16
WID Canal Diversion = 0 cfs			Walnut Creek WTP	0.26	4.01	17.27	14.96
Mokelumne River below WID = 1,286 cfs			Camp Pardee	0	3.36	13.43	12.94
			Salt Springs P.H.	0.02	10.16	34.12	27.54
			<u>CAPLES LAKE (7,830 FT) DATA</u>				
PG&E data as of 4:00 pm previous date.					Today	Average	
All other data as of midnight.			Snow Depth	110 Inches		69 Inches	
WTP capacities are sustainable rates.			Water Content	38.2 Inches		23.3 Inches	