

# Water Supply Update

Board of Directors Meeting

January 22, 2019

# Water Supply Briefing

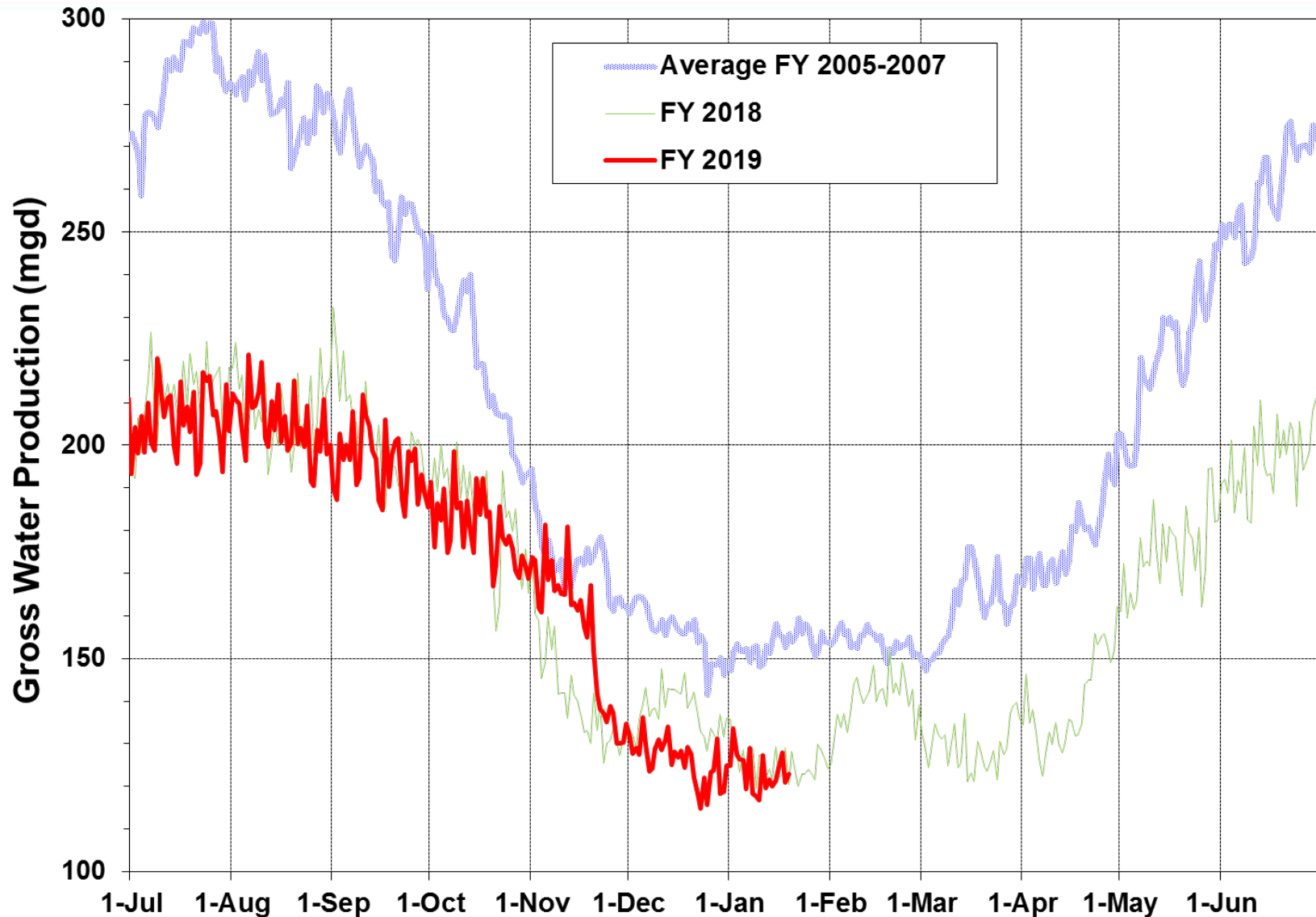


- Current Water Supply
- Water Supply Projections



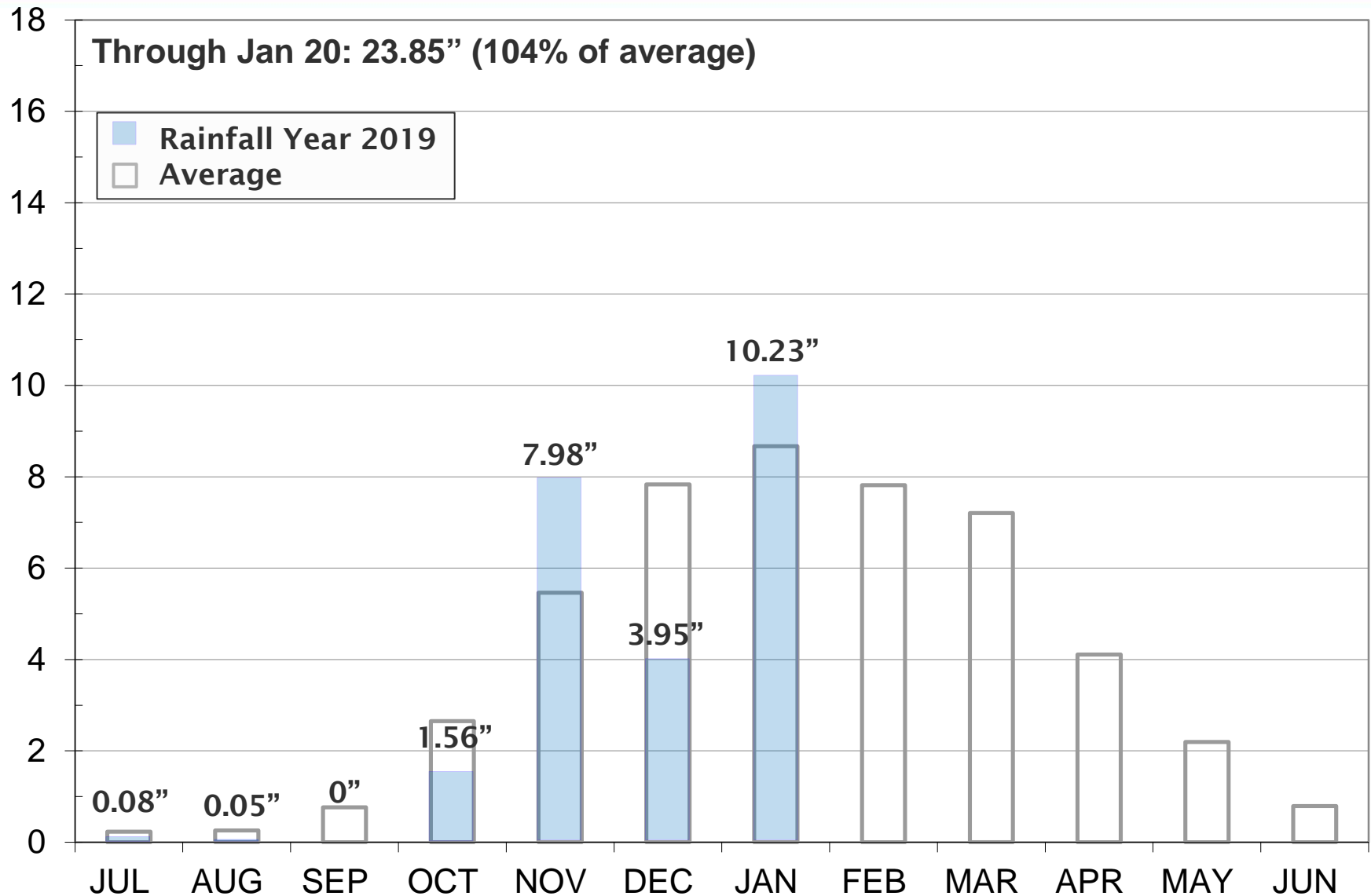
# Current Water Supply

## Gross Water Production



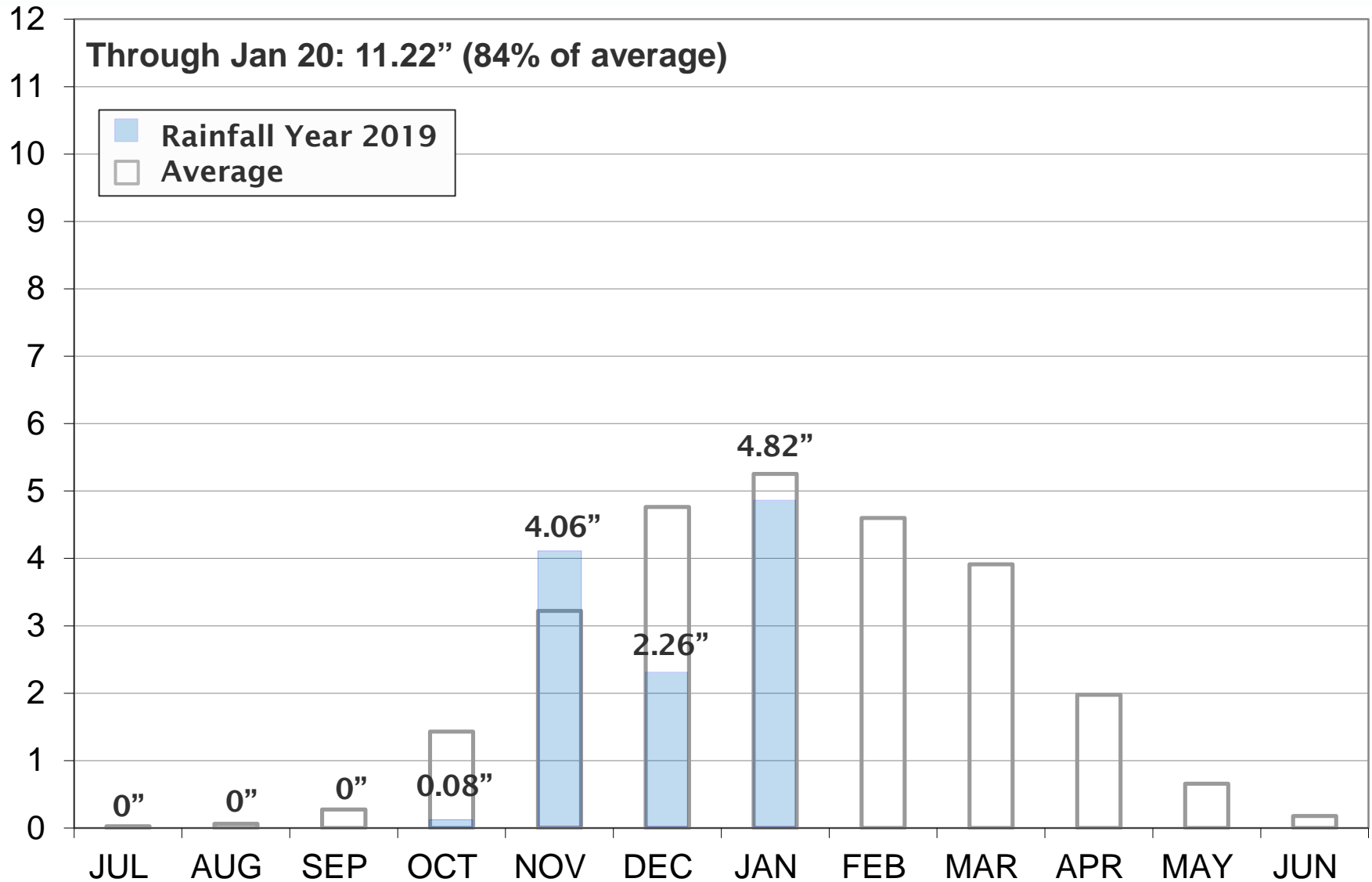
# Current Water Supply

## Mokelumne Precipitation



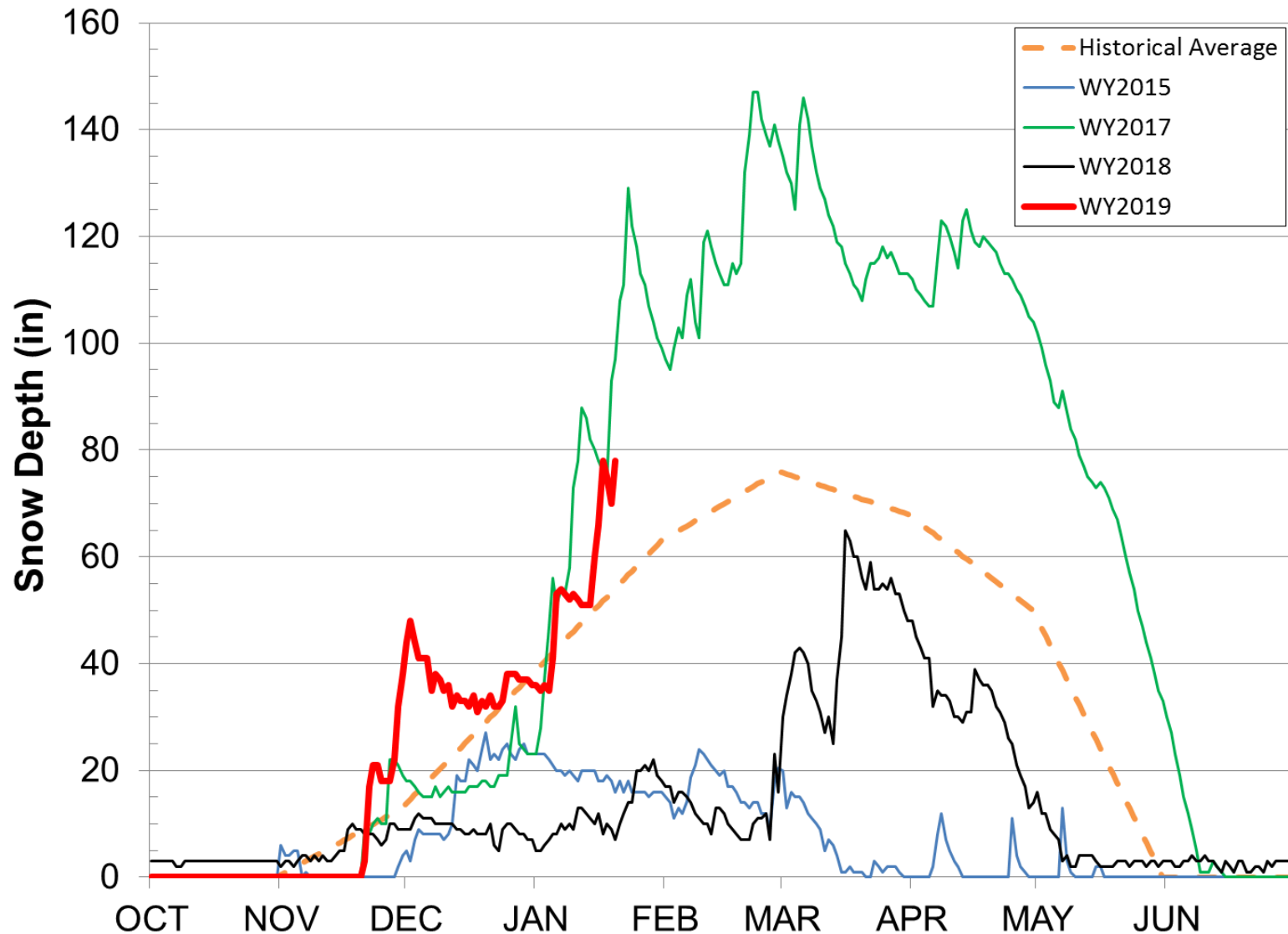
# Current Water Supply

## East Bay Precipitation



# Current Water Supply

## Caples Lake Snow Depth





# Current Water Supply

## Snow



As of Jan. 20, 2019	Cumulative Precipitation	% of Average
Caples Lake Snow Depth	78"	144%
Caples Lake Snow Water Content	24.3"	143%

# Current Water Supply

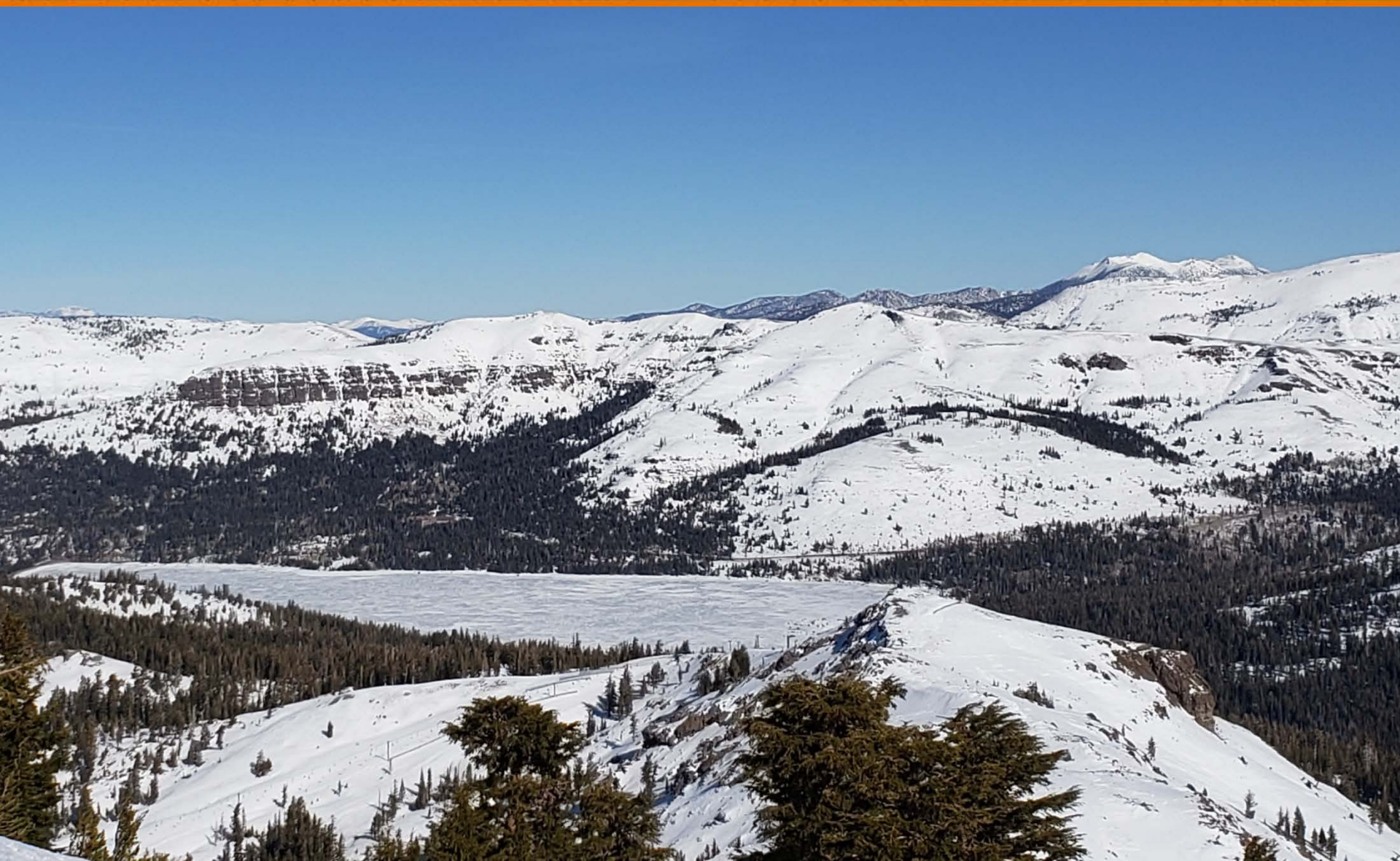
## Reservoir Storage



As of 1/20/2019	Current Storage	Percent of Average	Percent of Capacity
Pardee	189,310 AF	106%	93%
Camanche	315,200 AF	122%	76%
East Bay	114,820 AF	93%	76%
Total System	619,330 AF	110%	80%



# Questions ?



# WATER SUPPLY ENGINEERING DAILY REPORT

Monday, January 21, 2019

## RESERVOIR STORAGE AND ELEVATION

	<u>WATER SURFACE</u>		<u>STORAGE</u>		<u>MAXIMUM CAPACITY</u>		Release	Spill
	Elevation	+Gain		+Gain	Elevation	Storage		
	Feet	-Loss	Ac-Ft	-Loss	Feet	Ac-Ft	Cfs	Cfs
<u>MOKELUMNE</u>								
Pardee	561.52	0.52	190420	1110	567.65	203795	1036	0
Camanche	221.13	0.14	316120	920	235.5	417120	501	0
<u>EAST BAY</u>								
Briones	554.56	0.02	44710	10	576.14	58960	0	0
Chabot	224.05	0.02	9290	10	227.25	10350	0	0
Lafayette	438.89	0.01	3040	0	449.16	4250	0	0
San Pablo	303.51	0.03	29930	20	313.68	37915	0	0
Upper San Leandro	444.08	0.19	28000	110	459.98	38905	0	0
Total East Bay Res.			114970	150		150380		
TOTAL SYSTEM STORAGE			621510	2180		771295		

<u>DISTRIBUTION SYSTEM</u>			<u>MOKELUMNE SYSTEM</u>		
<u>DISTRIBUTION RESERVOIRS</u>			<u>AQUEDUCT DELIVERIES</u>		
	Storage	Operating		<u>MG</u>	<u>Flow Conditions</u>
	<u>MG</u>	<u>Capacity</u>	Line 1	38	GRAVITY
Today	341	720	Line 2	85.2	PUMPING
Total Previous Day	332		Line 3	0	SHUTDOWN
Total Change	9		TOTAL	123.2	191 Cfs
<u>WATER PRODUCTION</u>	Million	Capacity	<u>FSCC to MOK AQUEDUCTS (Measured at Brandt), MG</u>		
<u>AND DEMAND</u>	<u>Gallons</u>	<u>MGD</u>	Mok 1	0	
Lafayette WTP	0	25	Mok 2	0	
Orinda WTP	80	190		0 MG	
San Pablo WTP	0	30	<u>RIVER FLOWS AND RELEASES</u>		<u>Cfs</u>
Sobrante WTP	29.6	50	Mokelumne River Natural Flow		2344
Upper San Leandro WTP	0	45	Pardee Reservoir Inflow		1791
Walnut Creek WTP	24.3	90	Pardee Release to Camanche Res.		1036
<u>TOTAL SURFACE PRODUCTION</u>	133.9	430	Pardee Release to JVID		0
Miscellaneous(Estimated)	0.4		Camanche Release to Mokel. River		501
<u>TOTAL WATER PRODUCTION</u>	134.3		<u>PG&amp;E CO. STORAGE (Acre-feet)</u>		
Change in Distribution System	9			<u>Storage</u>	<u>Change</u>
Wash Water from Distribution Sys.	0.8				<u>Maximum</u>
<u>SYSTEM DEMAND</u>	124.5		Old Reservoirs	6998	165
East-of-Hills Demand	26		Salt Springs Res.	17108	739
West-of-Hills Demand	98.5		Lower Bear Res.	8505	193
			Total	32611	1097

<u>RAW WATER TRANSMISSION</u>			<u>PRECIPITATION (Inches)</u>				
	<u>INPUT</u>	<u>DRAFT</u>	<u>THIS YEAR</u>		<u>AVERAGE YEAR</u>		
Briones Res.	0	0	<u>STATION</u>	<u>Today</u>	<u>This Month</u>	<u>Season to-Date</u>	<u>Season to-Date</u>
San Pablo Res.	58	99	USL WTP	0	4.52	11.32	12.93
U. San Leandro Res.	0	0	Orinda WTP	0.04	7.07	16.84	15.85
<u>TOTAL</u>	58	99	Lafayette Reservoir	0.01	5.12	11.12	14.1
<u>REMARKS</u>			Walnut Creek WTP	0.01	6.18	13.17	11.56
WID Canal Diversion = 0 cfs			Camp Pardee	0	3.59	10.07	10.15
Mokelumne River below WID = 422 cfs			Salt Springs P.H.	0.56	10.52	23.89	21.84
			<u>CAPLES LAKE (7,830 FT) DATA</u>				
PG&E data as of 4:00 pm previous date.				<u>Today</u>	<u>Average</u>		
All other data as of midnight.			Snow Depth	82 Inches	55 Inches		
WTP capacities are sustainable rates.			Water Content	24.9 Inches	17.3 Inches		