

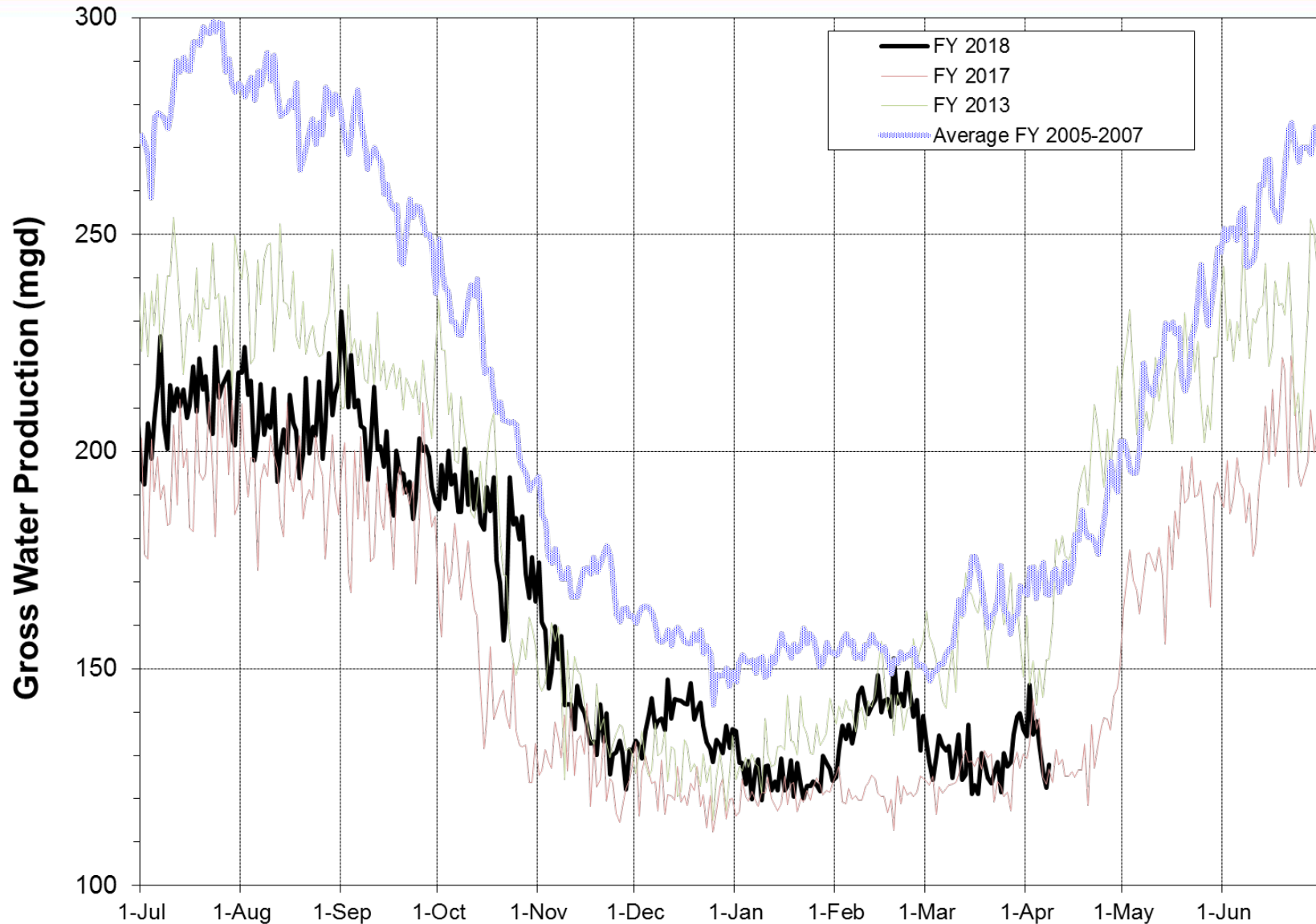
Water Supply Update

Board of Directors Meeting

April 10, 2018

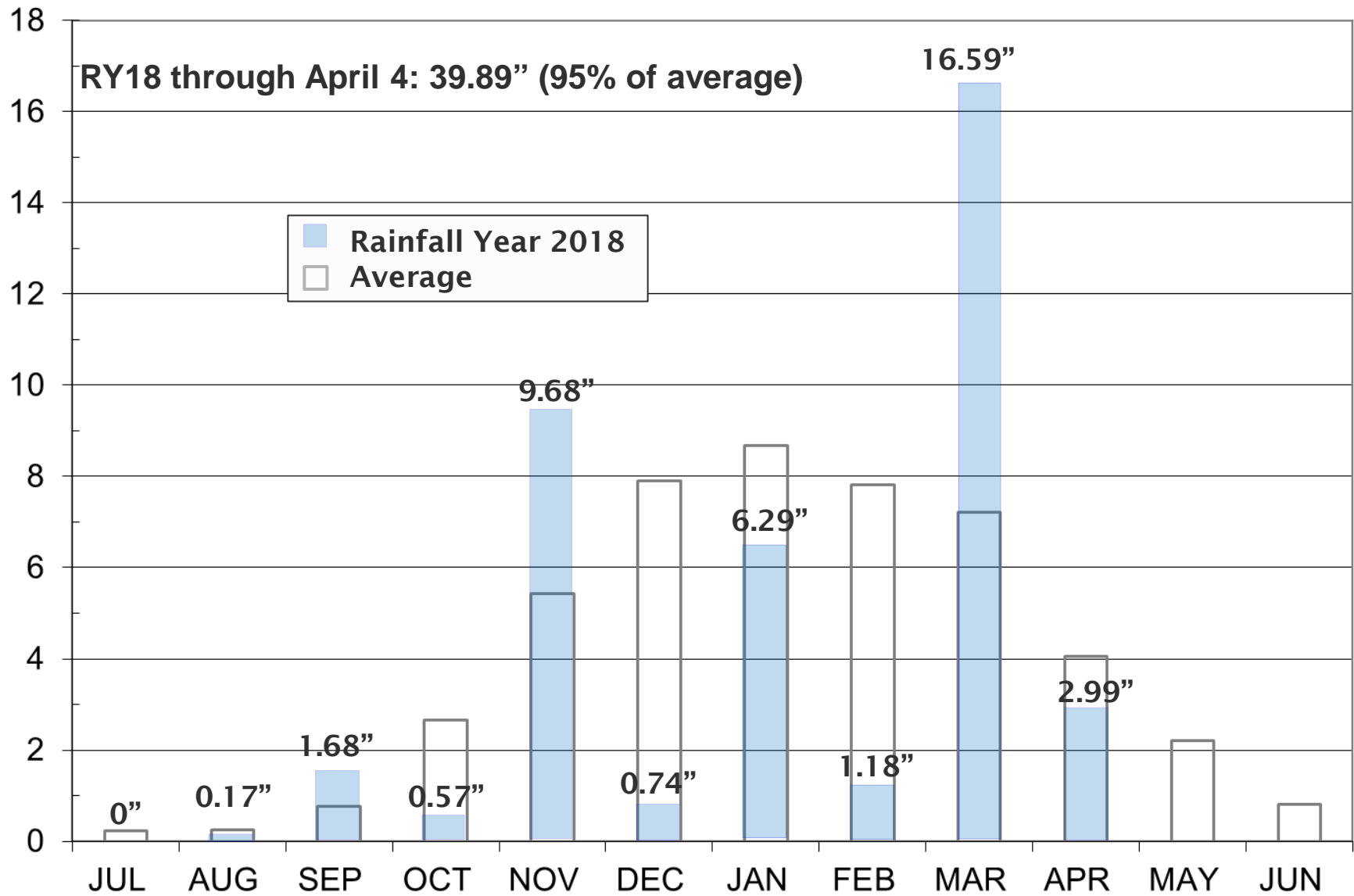
Current Water Supply

Gross Water Production



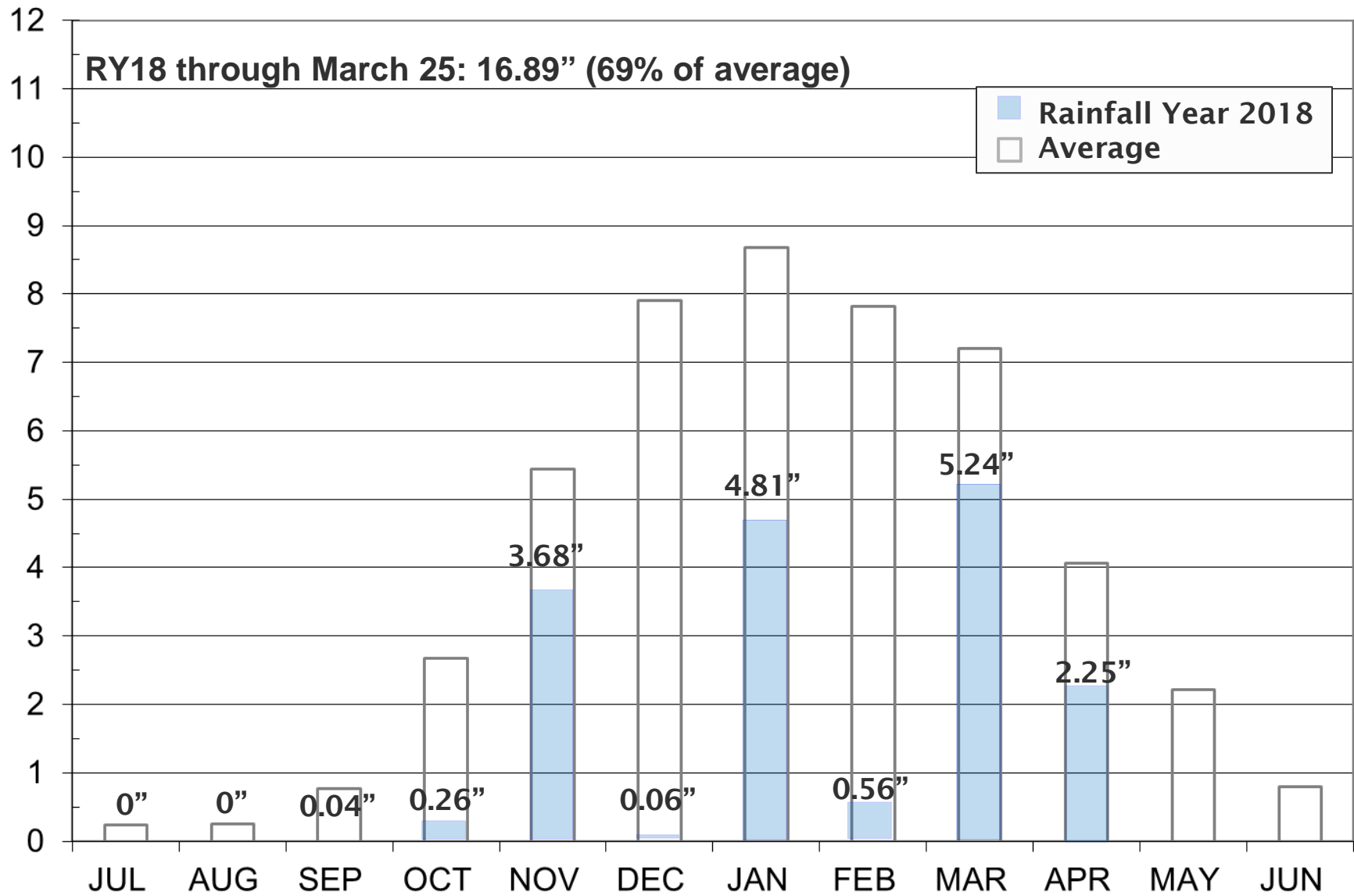
Current Water Supply

Mokelumne Precipitation



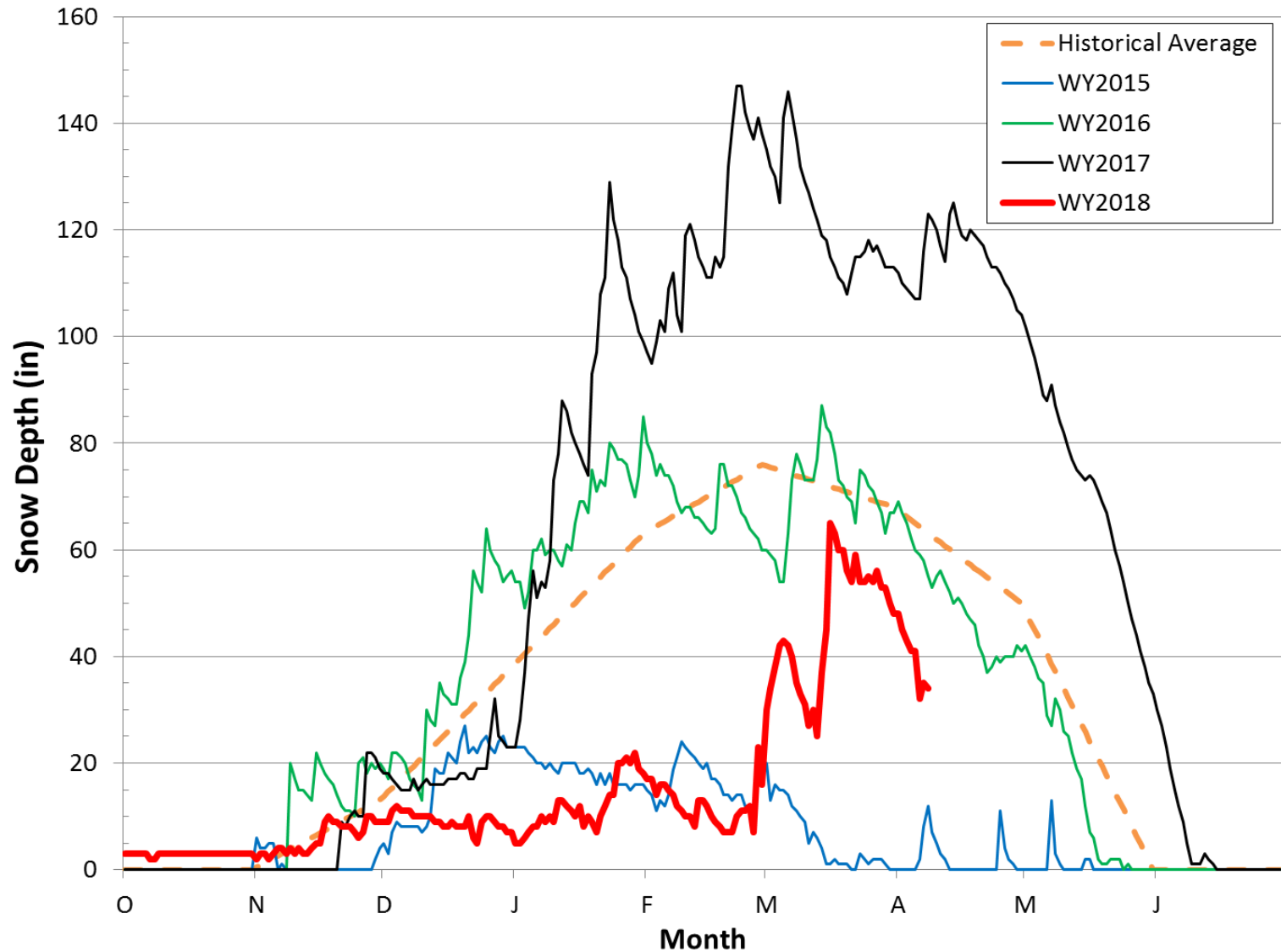
Current Water Supply

East Bay Precipitation



Current Water Supply

Caples Lake Snow Depth



Current Water Supply

Snow



As of 4/8/2018	Inches	% of Average
Caples Lake Snow Depth	34.00"	54%
Caples Lake Snow Water Content	13.26"	49%

Current Water Supply

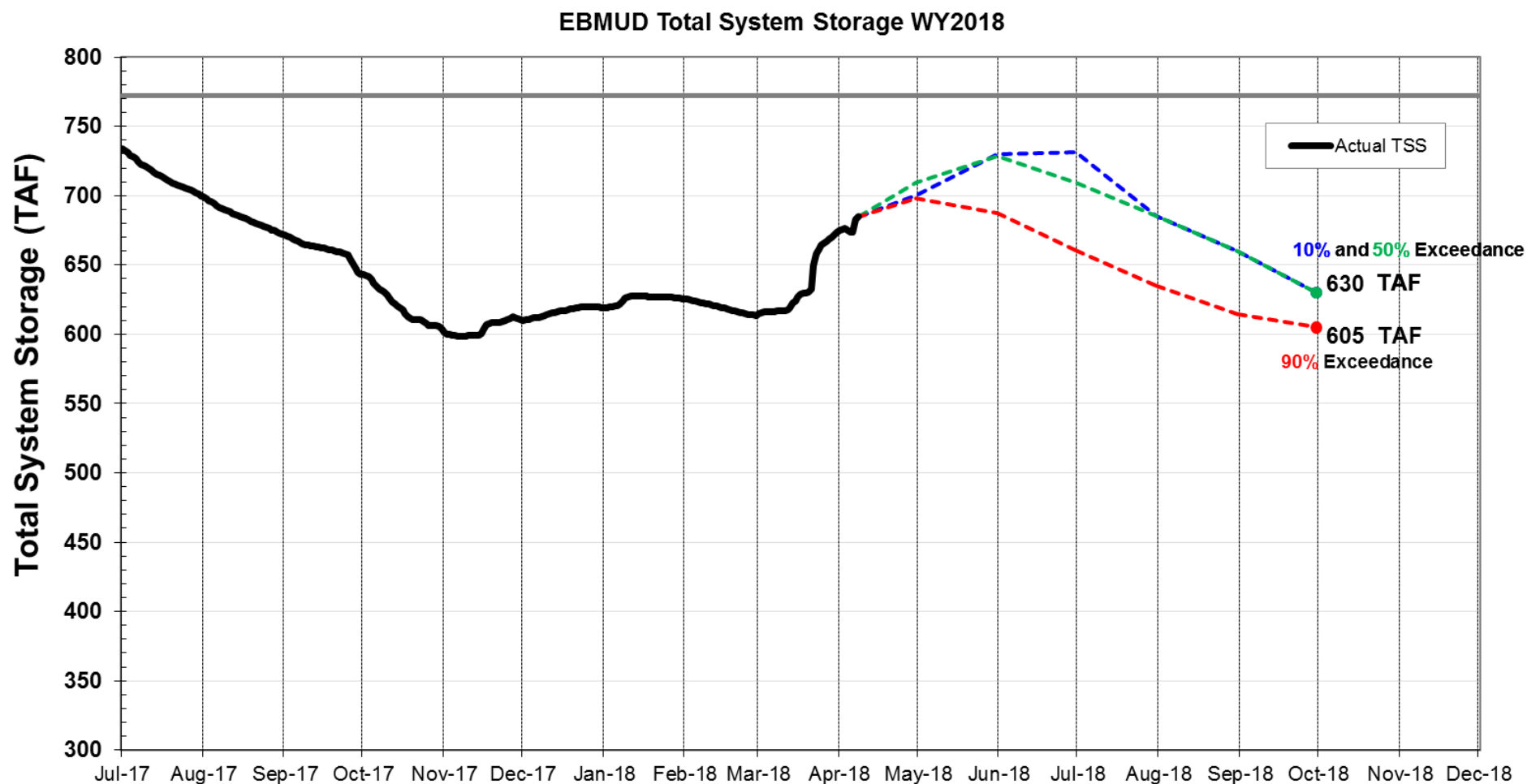
Reservoir Storage



As of 4/8/2018	Current Storage	Percent of Average	Percent of Capacity
Pardee	202,250 AF	108%	99%
Camanche	343,710 AF	114%	82%
East Bay	138,740 AF	99%	92%
Total System	684,700 AF	109%	89%

Water Supply Projections

EBMUD Total System Storage 2018



Current Water Supply

Questions ?



Pardee Spillway



WATER SUPPLY ENGINEERING DAILY REPORT

Monday, April 9, 2018

RESERVOIR STORAGE AND ELEVATION

	<u>WATER SURFACE</u>		<u>STORAGE</u>		<u>MAXIMUM CAPACITY</u>		Release	Spill
	Elevation	+Gain		+Gain	Elevation	Storage		
	Feet	-Loss	Ac-Ft	-Loss	Feet	Ac-Ft	Cfs	Cfs
<u>MOKELUMNE</u>								
Pardee	568.11	1.15	204840	2590	567.65	203795	1801	100
Camanche	225.07	-0.18	342490	-1220	235.5	417120	2365	0
<u>EAST BAY</u>								
Briones	572.36	-0.02	56330	-20	576.14	58960	0	0
Chabot	226.26	0.03	10020	10	227.25	10350	0	0
Lafayette	441.56	0	3340	0	449.16	4250	0	0
San Pablo	311.98	0.06	37200	50	313.68	38600	0	0
Upper San Leandro	450.36	0.09	31950	60	459.98	38905	0	0
Total East Bay Res.			138840	100		151065		
TOTAL SYSTEM STORAGE			686170	1470		771980		

<u>DISTRIBUTION SYSTEM</u>			<u>MOKELUMNE SYSTEM</u>		
<u>DISTRIBUTION RESERVOIRS</u>			<u>AQUEDUCT DELIVERIES</u>		
	Storage	Operating		MG	Flow Conditions
	MG	Capacity			
Today	346	720	Line 1	19	THROTTLE
Total Previous Day	364		Line 2	34.8	THROTTLE
Total Change	-18		Line 3	57.9	THROTTLE
			TOTAL	111.7	173 Cfs
<u>WATER PRODUCTION</u>	Million	Capacity	<u>FSCC to MOK AQUEDUCTS (Measured at Brandt), MG</u>		
<u>AND DEMAND</u>	Gallons	MGD	Mok 1	0	
Lafayette WTP	0	25	Mok 2	0	
Orinda WTP	87	190		0 MG	
San Pablo WTP	0	30	<u>RIVER FLOWS AND RELEASES</u>		
Sobrante WTP	0	50			Cfs
Upper San Leandro WTP	0	45	Mokelumne River Natural Flow		4880
Walnut Creek WTP	27.3	90	Pardee Reservoir Inflow		3291
			Pardee Release to Camanche Res.		1801
<u>TOTAL SURFACE PRODUCTION</u>	114.3	430	Pardee Release to JVID		0
Miscellaneous(Estimated)	0.4		Camanche Release to Mokel. River		2365
<u>TOTAL WATER PRODUCTION</u>	114.7				
Change in Distribution System	-18		<u>PG&E CO. STORAGE (Acre-feet)</u>		
Wash Water from Distribution Sys.	0				Maximum
<u>SYSTEM DEMAND</u>	132.7			Storage	Change
East-of-Hills Demand	26.2		Old Reservoirs	14192	147
West-of-Hills Demand	106.5		Salt Springs Res.	94634	2089
			Lower Bear Res.	39642	916
			Total	148468	3152

RAW WATER TRANSMISSION			PRECIPITATION (Inches)					
	INPUT	Ac-ft DRAFT	THIS YEAR			AVERAGE YEAR		
Briones Res.	0	0	STATION	Today	This Month	Season to-Date	Season to-Date	Season Total
San Pablo Res.	0	0	USL WTP	0	3	17.88	23.06	25.33
U. San Leandro Res.	0	0	Orinda WTP	0	2.44	23.06	29.28	32.06
			Lafayette Reservoir	0	1.5	15.89	25.83	28.18
			Walnut Creek WTP	0	1.91	19.95	21.34	23.02
			Camp Pardee	0	2.6	18.97	19.05	21.56
			Salt Springs P.H.	0	2.72	36.07	39.6	45.51
			CAPLES LAKE (7,830 FT) DATA					
			Today		Average			
PG&E data as of 4:00 pm previous date.			Snow Depth		34 Inches		63 Inches	
All other data as of midnight.			Water Content		13.0 Inches		27.0 Inches	
WTP capacities are sustainable rates.								