

Water Supply Board Briefing

Water Operations Department

April 26, 2016

Water Supply Briefing

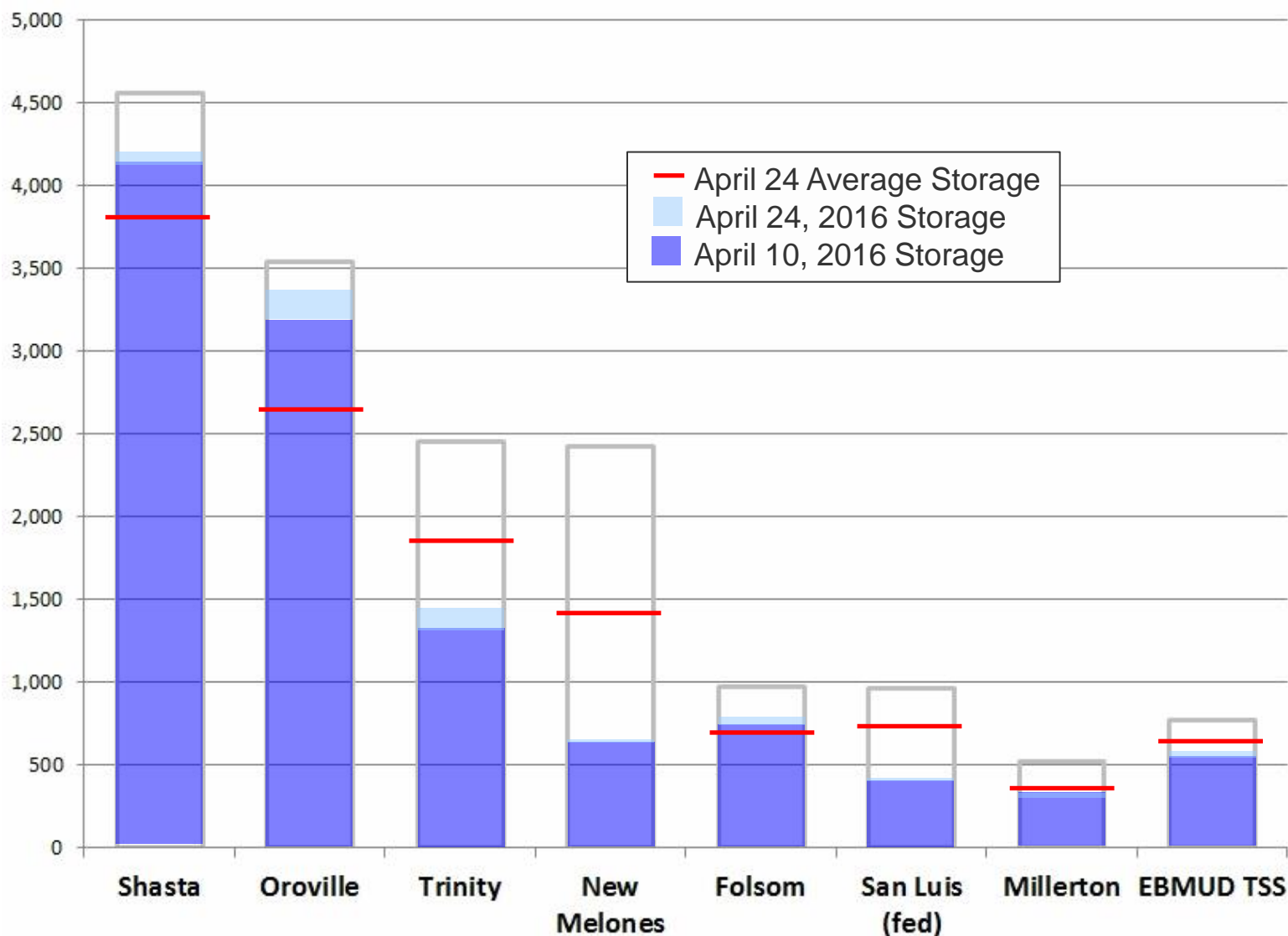


- California Water Supply
- District Water Supply
- Water Supply Projections
- Water Supply Schedule



California Water Supply

Reservoir Storage – April 24



District Water Supply

Precipitation & Snow



As of 4/24/2016	Cumulative Precipitation	% of Average
East Bay		
East Bay Watershed	25.12"	99%
Mokelumne Basin		
4-Station Average	47.80"	108%
Caples Lake Snow Depth	39"	73%
Caples Lake Snow Water Content	22.60"	89%

District Water Supply

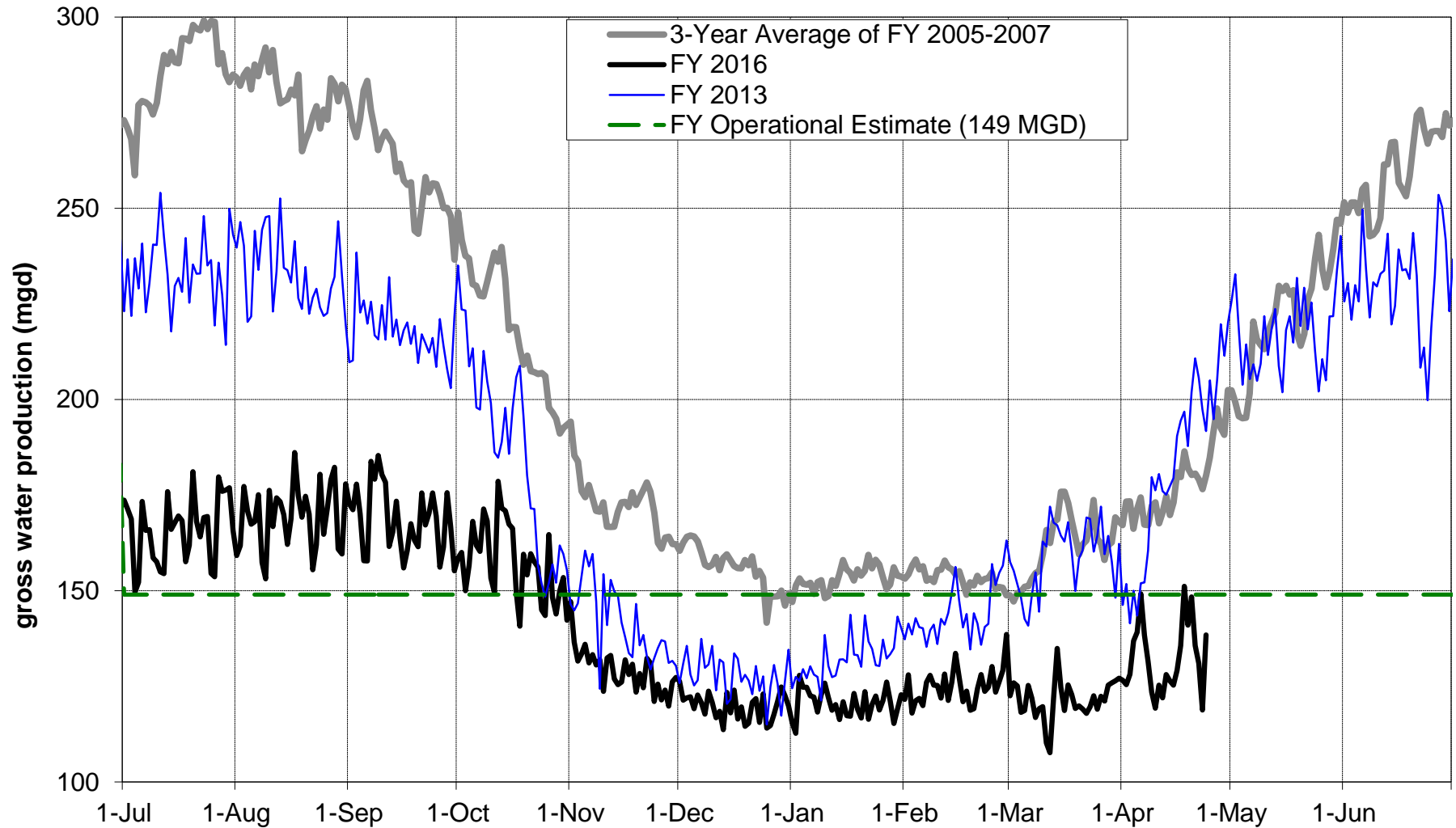
Reservoir Storage



As of 4/24/16	Current Storage	Percent of Average	Percent of Capacity
Pardee	182,870 AF	100%	92%
Camanche	229,280 AF	75%	55%
East Bay	138,850 AF	98%	92%
Total System	551,000 AF	88%	72%

District Water Supply

Gross Water Production



District Water Supply

Water Savings



	Savings Rate (2013 Baseline)
April 25, 2015 – April 24, 2016	25%
June 1, 2015 – April 24, 2016	24%

Water Supply Projections

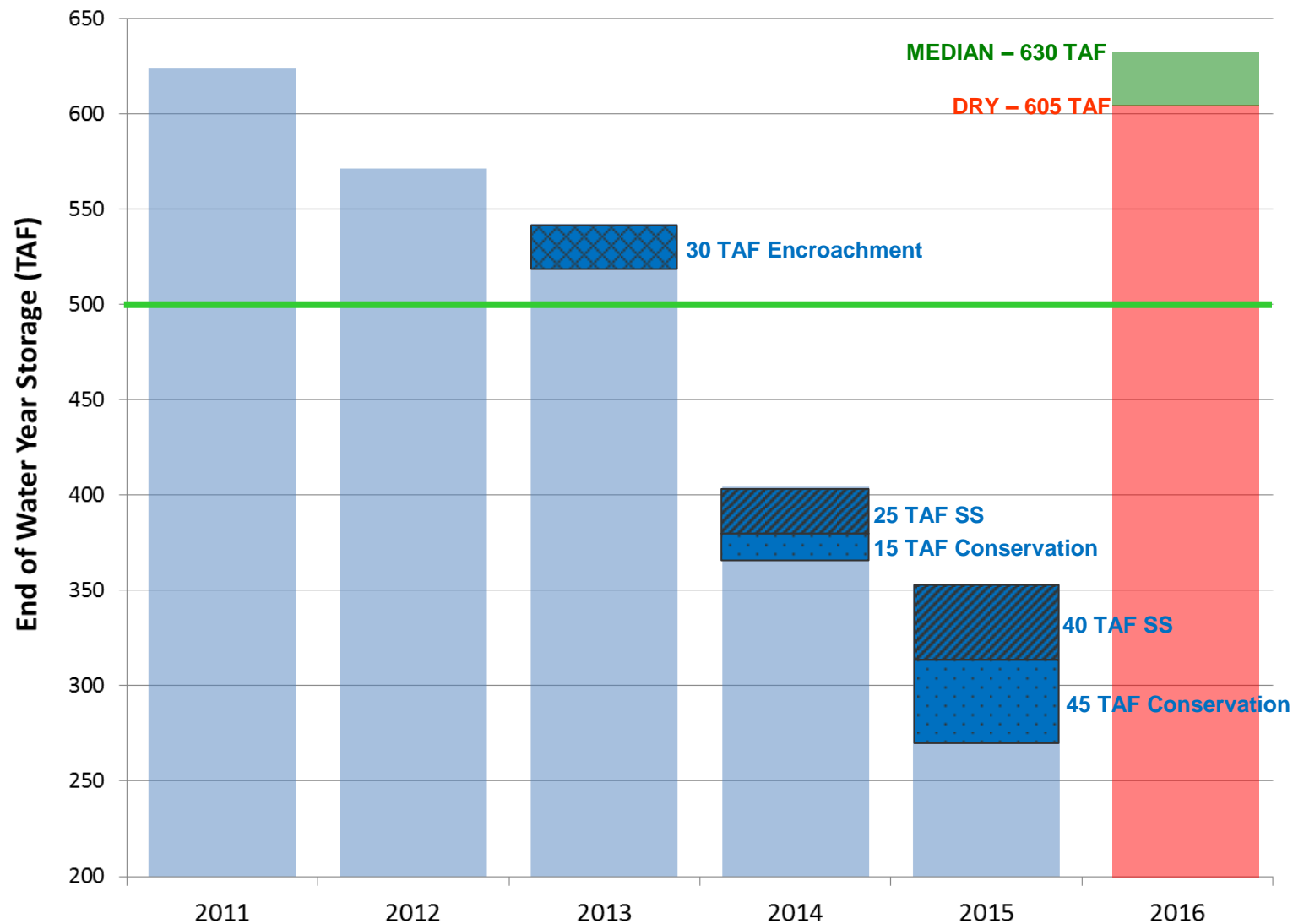
Mokelumne Runoff



Actual Runoff Received	450 TAF
+ Projected Runoff To-Come	290 to 365 TAF
<hr/>	
Total WY16 Runoff	740 to 815 TAF

Water Supply Projections

End of September Storage



Water Year 2016

Summary as of April 24, 2016



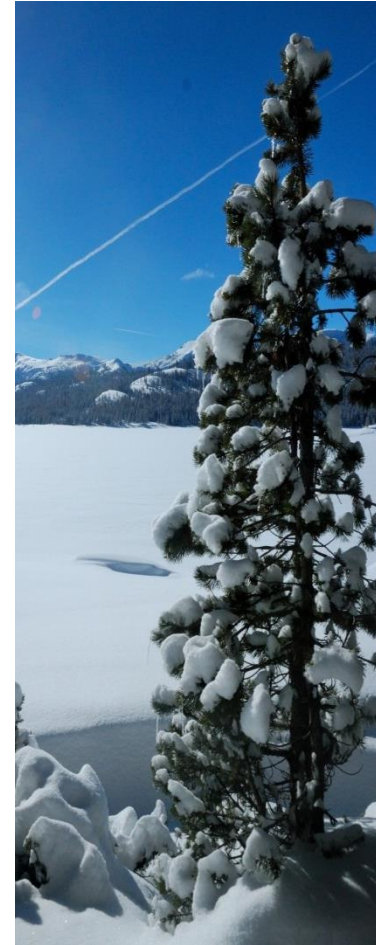
- Mokelumne River basin runoff is 450 TAF
- Projected end of water year storage is 605– 630 TAF (90% - 10% exceedance)
- Mokelumne River watershed season to date precipitation is 108% of average
- East Bay watershed season to date precipitation is 99% of average
- Precipitation accumulation season – 92% complete (8% remaining)

Water Year 2016

Water Supply Schedule



Date	Activity
February 2	<ul style="list-style-type: none">• DWR February Snow Survey
February 23	<ul style="list-style-type: none">• Drought Financial Impacts
March 1	<ul style="list-style-type: none">• DWR March Snow Survey
April 1	<ul style="list-style-type: none">• DWR April Snow Survey• USBR Initial Allocation
April 8	<ul style="list-style-type: none">• DWR April 1, 2016 Bulletin 120 forecasts
April 26	<ul style="list-style-type: none">• Water Supply Report• Water Supply Availability and Deficiency Report• Consider suspension of excessive use charge
May 24	<ul style="list-style-type: none">• Consider change in Drought Stage• Consider Section 28 changes• Consider stopping Supersaver



Looking Forward to a Snowy Winter in Water Year 2017!

