



**NOTICE OF PREPARATION
ENVIRONMENTAL IMPACT REPORT
ESTATES RESERVOIR REPLACEMENT PROJECT
EAST BAY MUNICIPAL UTILITY DISTRICT
AUGUST 13, 2008**

Project: The East Bay Municipal Utility District (EBMUD) proposes to prepare a project level Environmental Impact Report (EIR) for the replacement of Estates Reservoir and the rehabilitation of the Montclair Pumping Plant, both located at 6317 Estates Drive in the City of Oakland. The project involves the demolition of the existing reservoir structure and appurtenances (including the roof system, roof features, and concrete lining) and the installation of two 2.75 million gallon buried concrete tanks, landscaping and associated appurtenances. The Montclair Pumping Plant element includes an upgrade of exiting pumps and motors including the instrumentation, motor control centers, transformers and related appurtenances located at the facility. See attached location map.

Objective: The project objectives are to improve water quality by downsizing existing open-cut reservoirs and to restore operational flexibility and redundancy in the greater Dingee Pressure Zone. The improvements will also address seismic issues related to the reservoir embankments.

Project Location/Setting: Estates Reservoir is located on a 6.7-acre parcel of land on the south side of Estates Drive in the City of Oakland. The reservoir is situated west of Highway 13, south of Moraga Road and north of Park Avenue. Pine, coastal live oak trees, coastal redwoods, deodara cedars and shrubbery are interspersed along the property boundary.

EIR Process: EBMUD, acting as lead agency under the California Environmental Quality Act (CEQA), will prepare an EIR consistent with CEQA. With this Notice of Preparation (NOP), input regarding the scope of the environmental review in the EIR is being solicited from interested parties, including responsible, resource and trustee agencies and the public. Responsible, resource and trustee agencies under CEQA and other interested agencies may include the City of Oakland, Alameda County, Regional Water Quality Control Board, Bay Area Air Quality Management District and the State of California Division of Safety of Dams.

The environmental factors that could potentially be affected by this project (i.e., involving at least one impact that is a "Potentially Significant Impact") include aesthetics, cultural resources, noise, air quality, geology/soils and transportation/traffic. Additional elements may be added to this list as a result of scoping.

EBMUD requests your input regarding the scope and content of the environmental information that should be considered or included in the proposed EIR. CEQA requires that your response be submitted to EBMUD at the earliest possible date, but no later than September 15, 2008.

Scoping Meeting: A scoping meeting for agencies will be held on Wednesday, August 27, 2008, from 10:00 a.m. to 12:00 noon, at the EBMUD Administration Building, 375 11th Street, 2nd Floor, Training Resource Center/Small Room, Oakland, California.

Notice of Preparation, Environmental Impact Report, Estates Reservoir Replacement Project
East Bay Municipal Utility District
August 13, 2008
Page 2

Responses to or questions regarding this NOP should be directed to:

Gwen Alie, Associate Planner
East Bay Municipal Utility District
375 Eleventh Street, MS 701
Oakland, CA 94607-4240
(510) 287-1053, galie@ebmud.com

The Draft EIR is targeted for circulation in February 2009, with action by EBMUD's Board of Directors anticipated in July 2009. Notice will be given of public meetings, including a public hearing during the Draft EIR comment period. At the end of the review and comment process, EBMUD's Board of Directors will determine whether to adopt the Estates Reservoir Replacement Project and certify the EIR. Additional information about the Estates Reservoir Replacement Project can also be obtained from the EBMUD website.

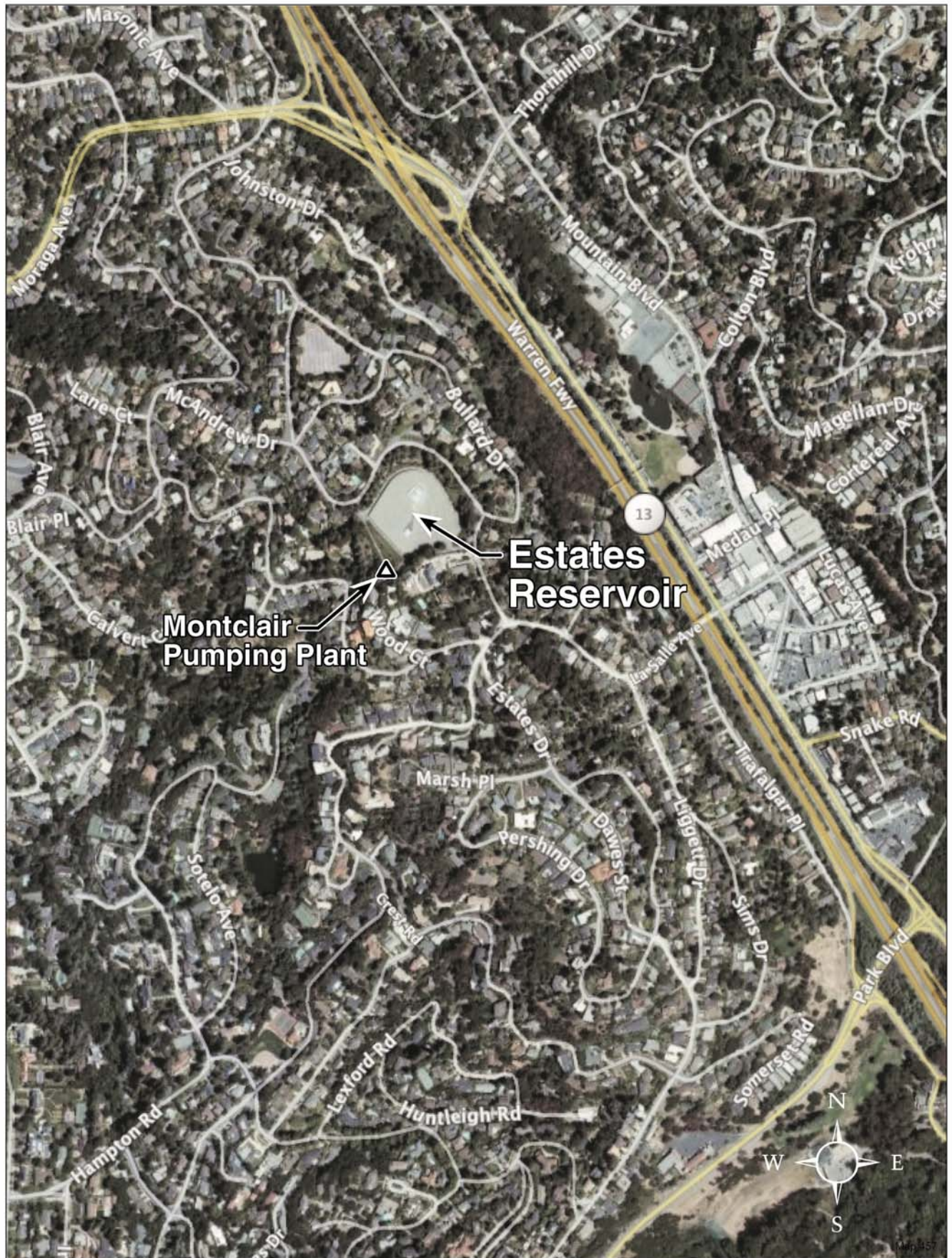


Xavier J. Irias, Director of Engineering and Construction
East Bay Municipal Utility District

8-13-08

Date

XJI:WRK:sb
sb08_207.doc



Estates Reservoir Replacement Vicinity/Location Map