

Water Supply Update

Board of Directors Meeting

February 25, 2020

Water Supply Briefing

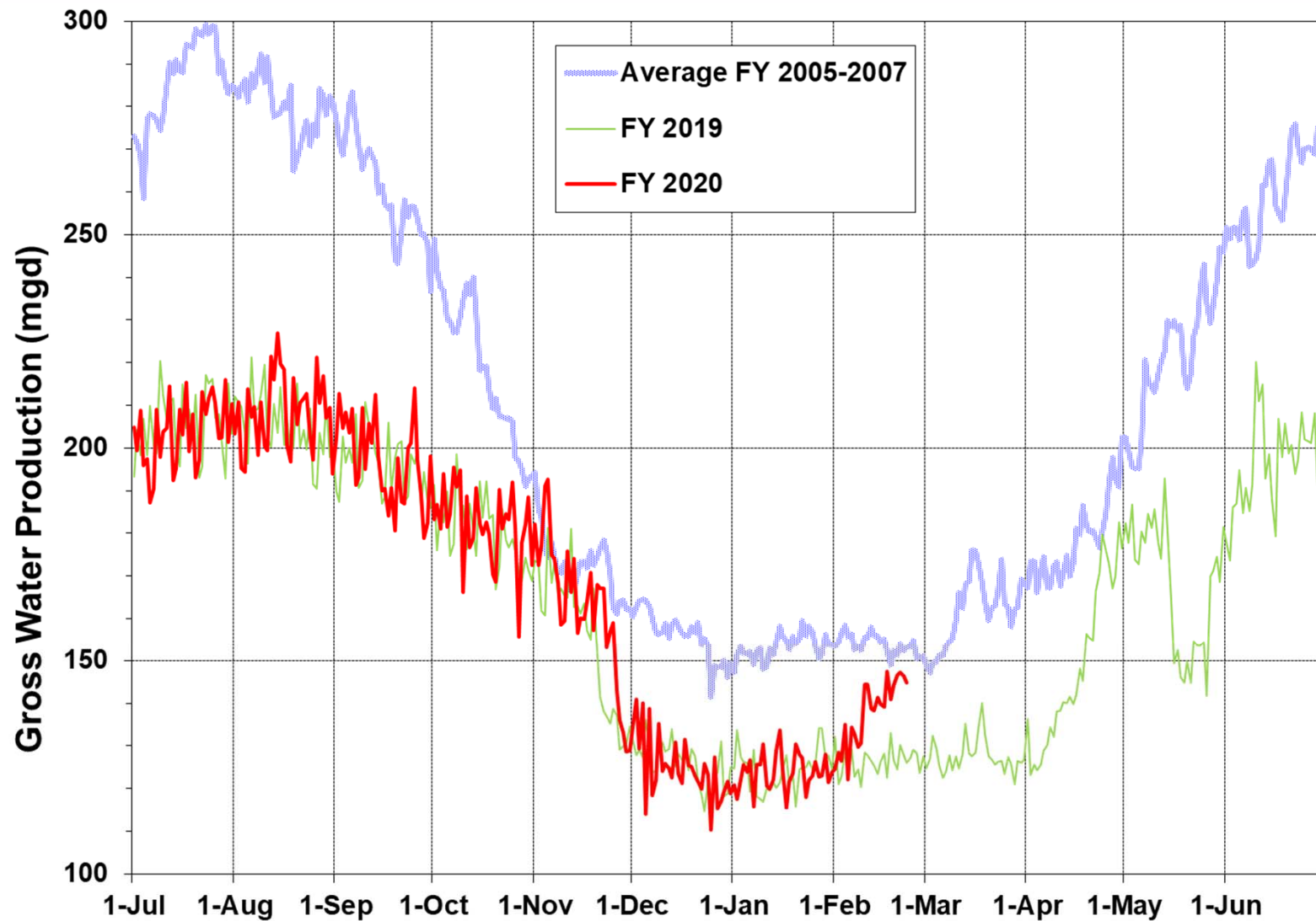


- Current Water Supply
- California Water Supply
- Water Supply Projections



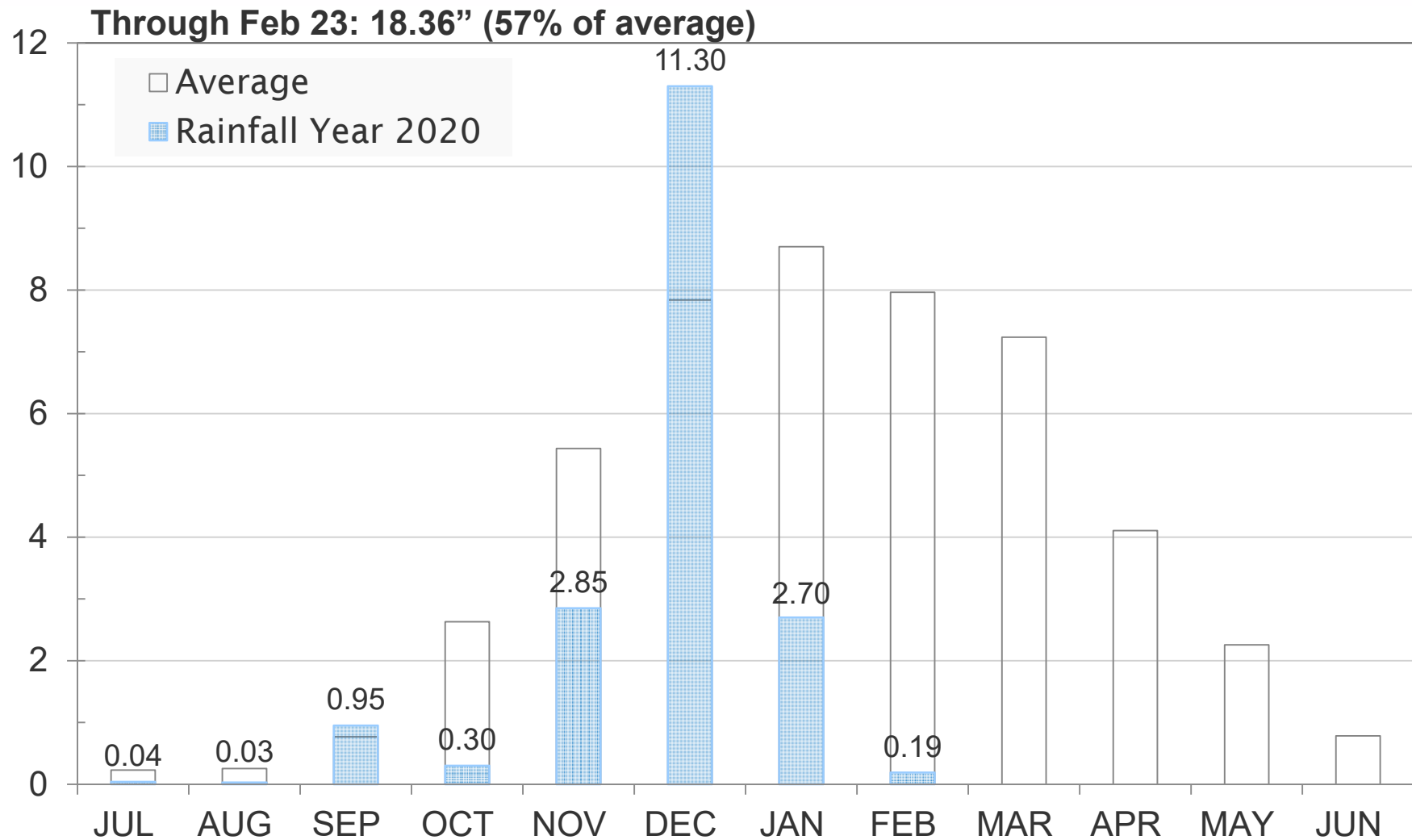
Current Water Supply

Gross Water Production



Current Water Supply

Mokelumne Precipitation

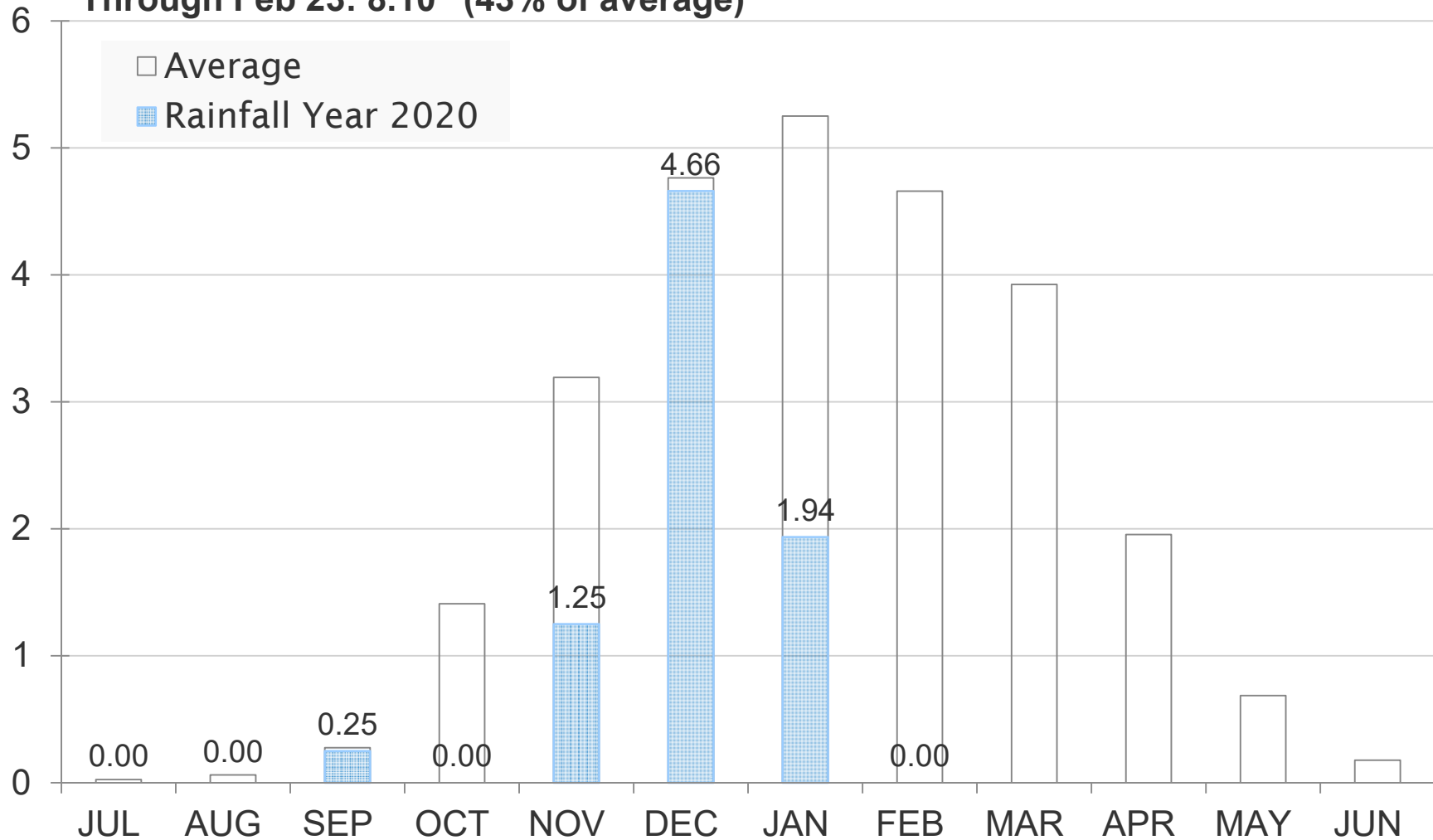


Current Water Supply

East Bay Precipitation

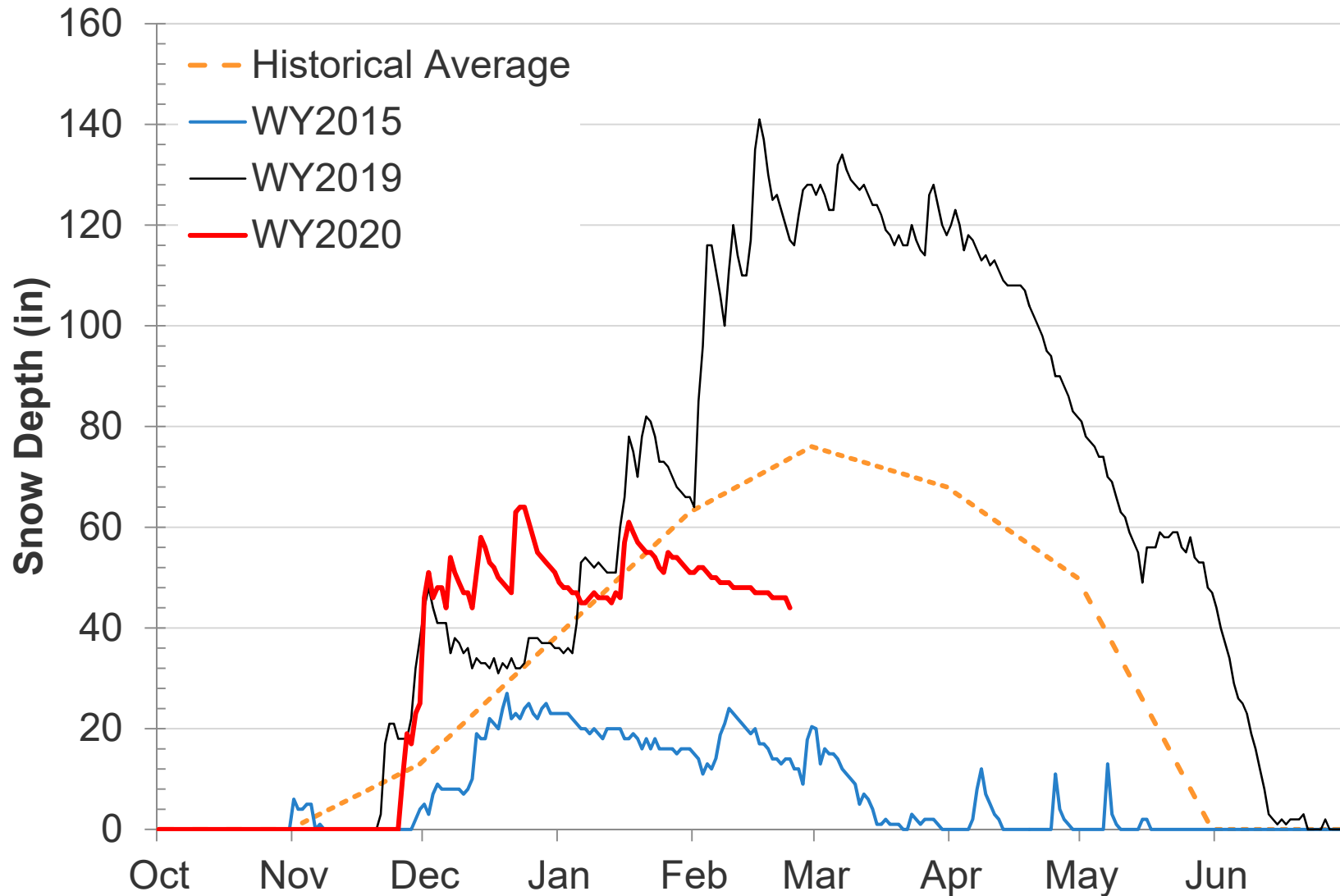


Through Feb 23: 8.10" (43% of average)



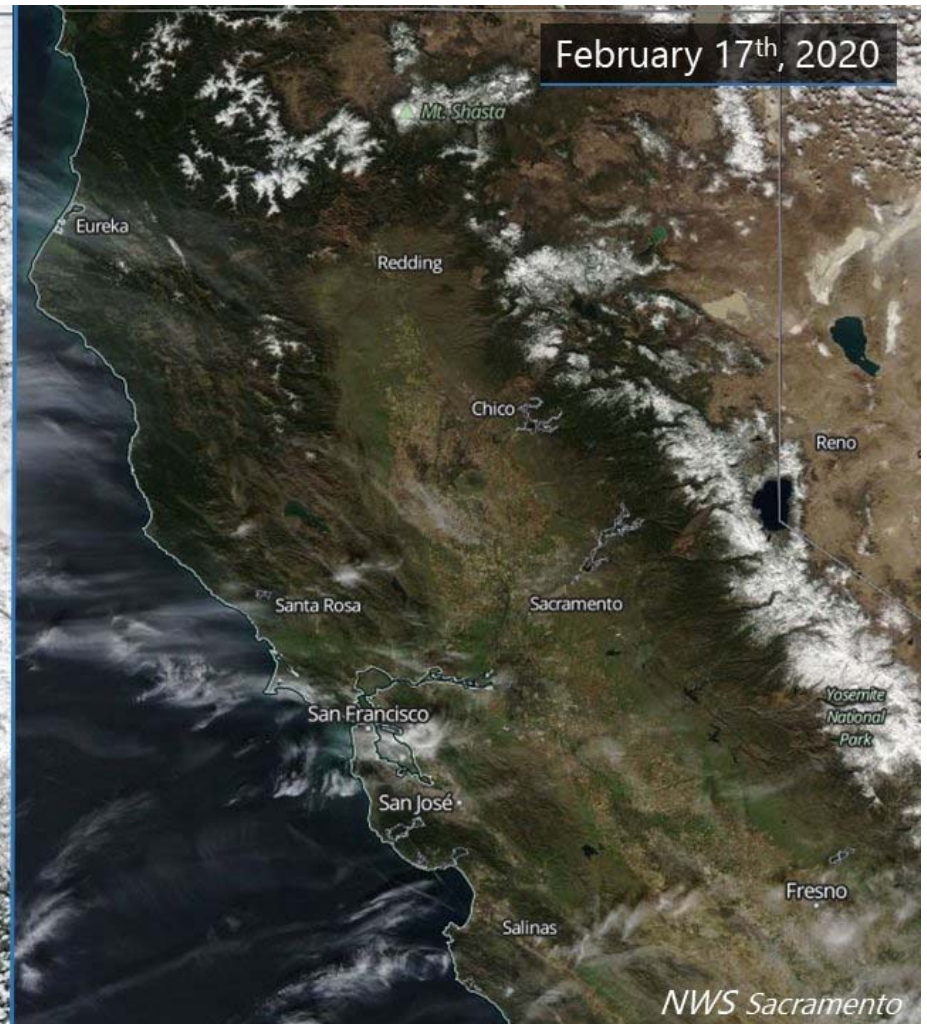
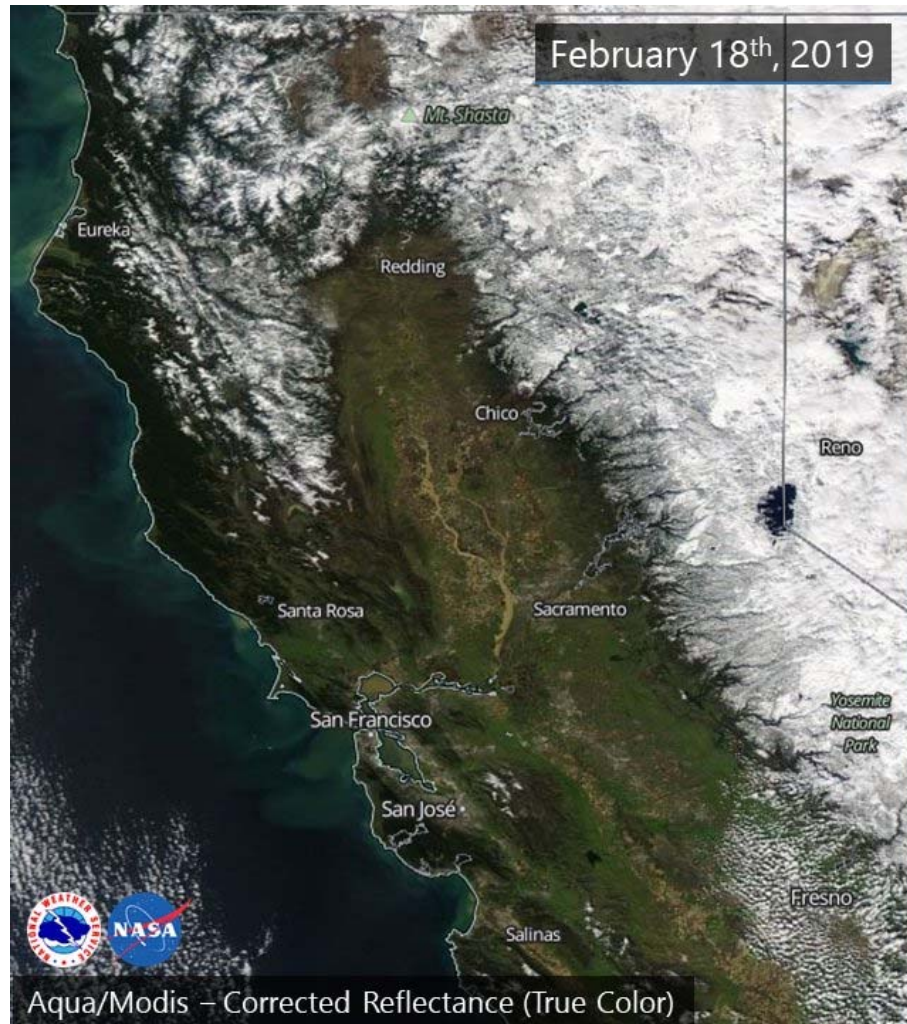
Current Water Supply

Caples Lake Snow Depth



Current Water Supply

Snow



Current Water Supply

Snow



As of Feb. 23, 2020	Cumulative Precipitation	% of Average
Caples Lake Snow Depth	44"	60%
Caples Lake Snow Water Content	17.20"	67%

Current Water Supply

Reservoir Storage



As of 2/23/2020	Current Storage	Percent of Average	Percent of Capacity
Pardee	182,000 AF	100%	89%
Camanche	289,440 AF	107%	69%
East Bay	129,850 AF	98%	86%
Total System	601,290 AF	103%	78%

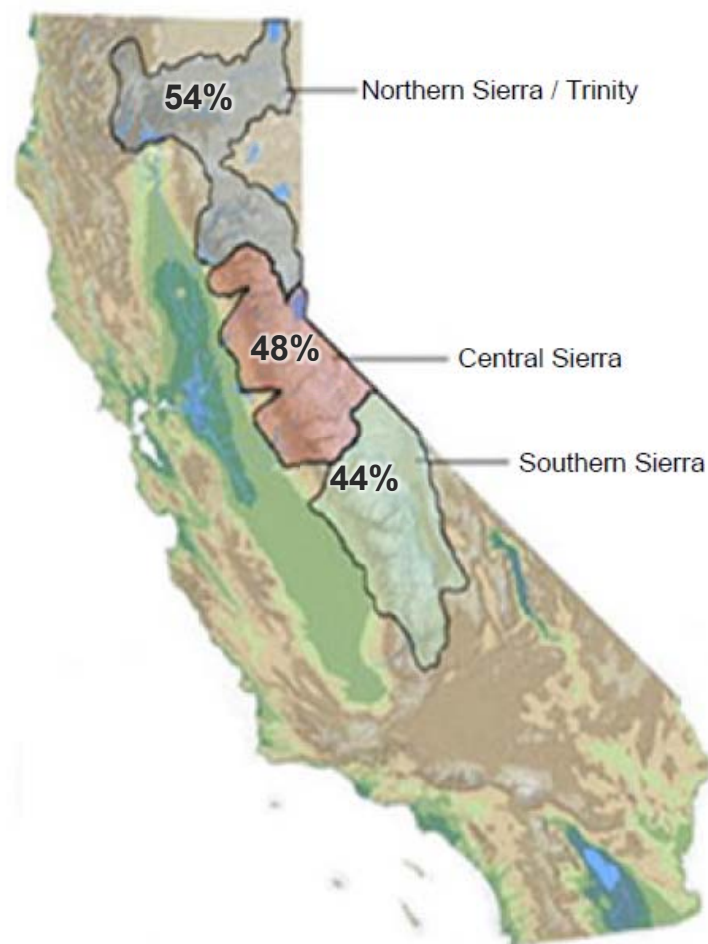
California Water Supply

Automated Sensor Snow Water Equivalents



Data for: 23-Feb-2020

% Normal for this Date



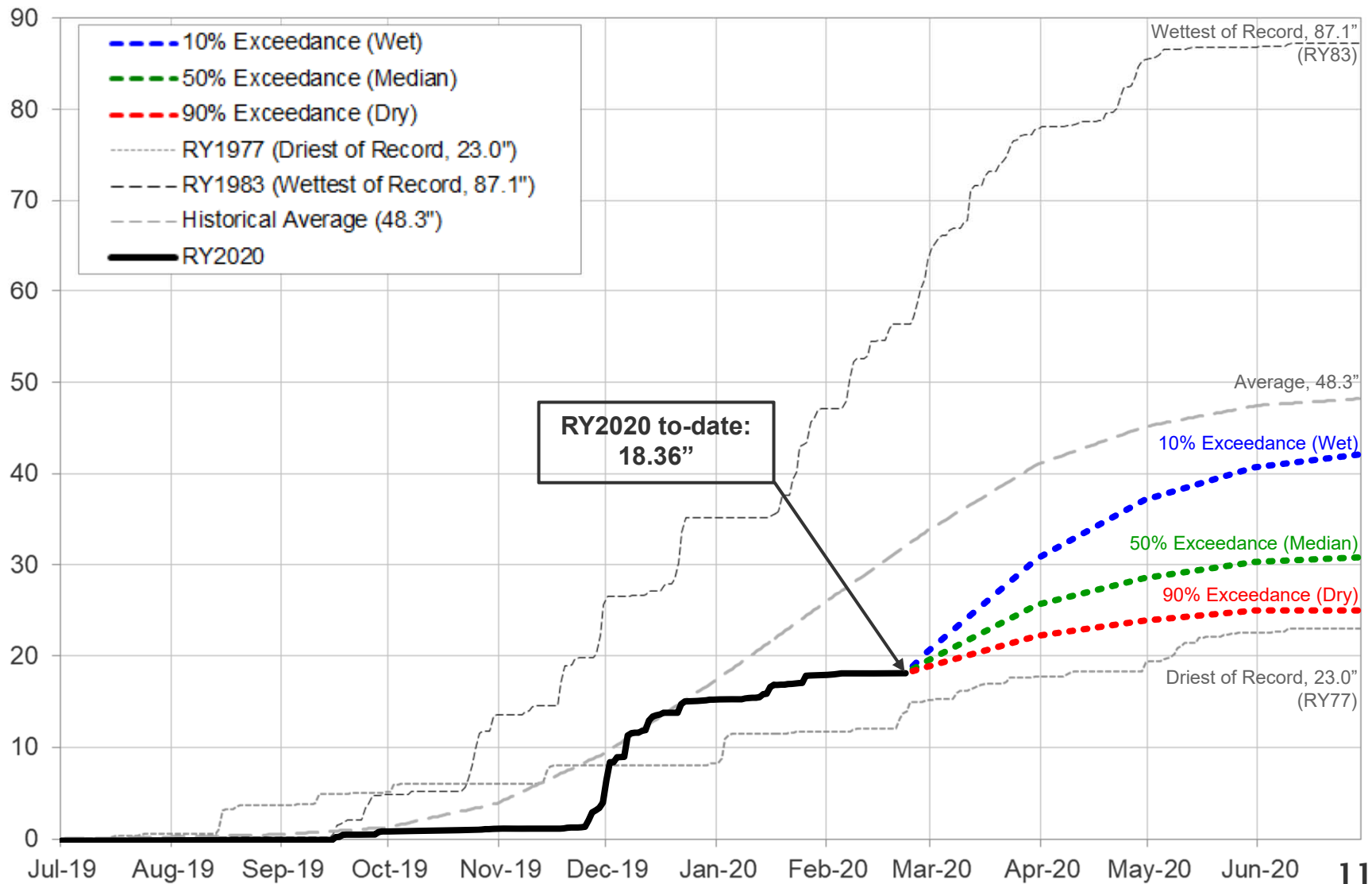
Caples Lake Snow Water Content

Year	% of Normal on February 23
2018	19%
2019	178%
2020	67%

Statewide Average: 49%

Water Supply Projections

Mokelumne Precipitation Rainfall Year 2020

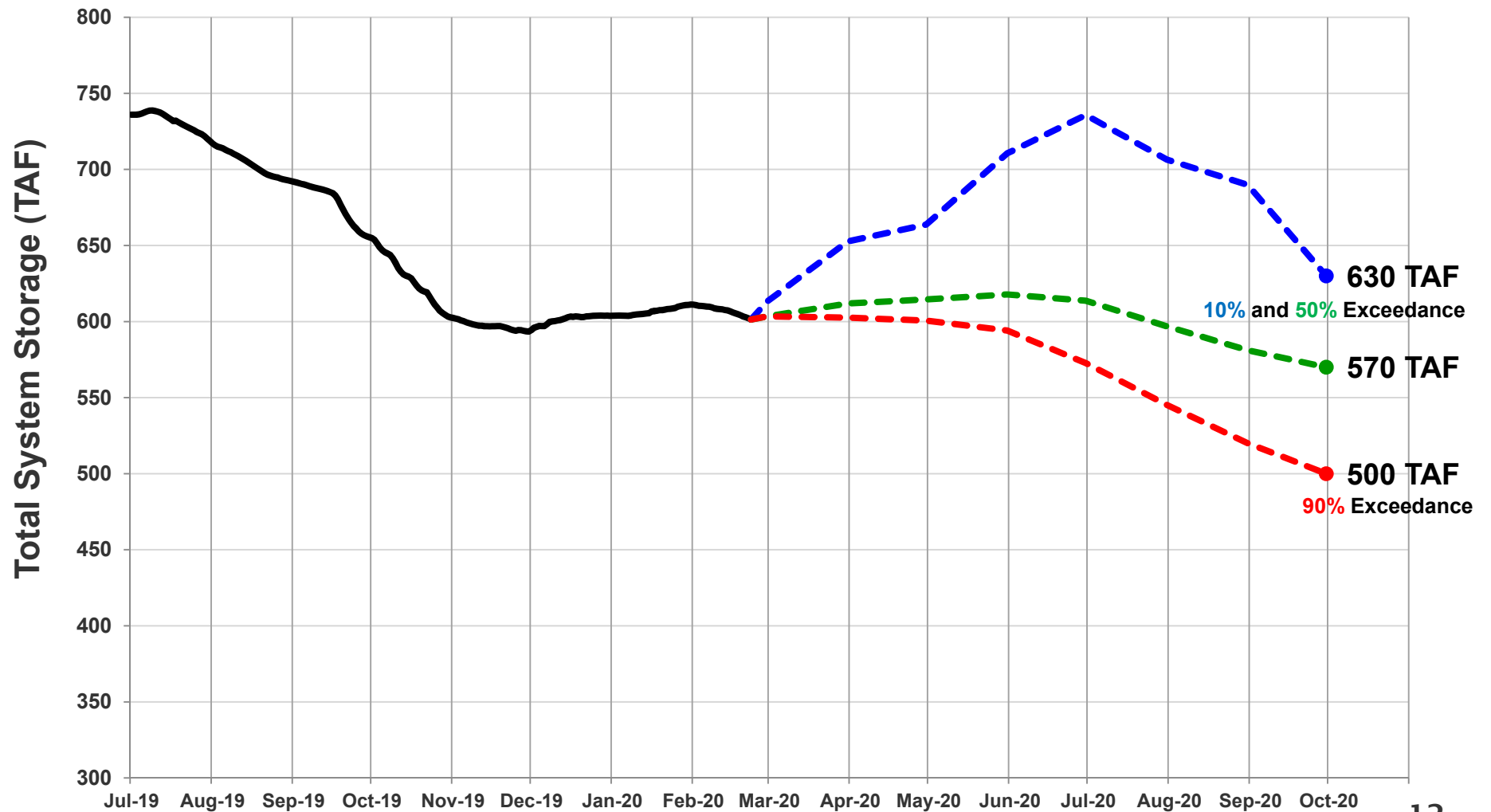


Water Supply Projections

Projected 2020 EBMUD Total System Storage



Total System Storage WY2020



Questions ?



WATER SUPPLY ENGINEERING DAILY REPORT

Monday, February 24, 2020

RESERVOIR STORAGE AND ELEVATION

<u>WATER SURFACE</u>			<u>STORAGE</u>		<u>MAXIMUM CAPACITY</u>			
	Elevation	+Gain		+Gain	Elevation	Storage	Release	Spill
<u>MOKELUMNE</u>	<u>Feet</u>	<u>-Loss</u>	<u>Ac-Ft</u>	<u>-Loss</u>	<u>Feet</u>	<u>Ac-Ft</u>	<u>Cfs</u>	<u>Cfs</u>
Pardee	557.51	-0.01	181980	-20	567.65	203795	14	0
Camanche	216.87	-0.11	288740	-700	235.5	417120	330	0
<u>EAST BAY</u>								
Briones	570.83	-0.05	55290	-30	576.14	58960	0	0
Chabot	223.65	-0.01	9160	0	227.25	10350	0	0
Lafayette	437.82	0	2920	0	449.16	4250	0	0
San Pablo	303.7	0.02	30070	20	313.68	37915	0	0
Upper San Leandro	451.02	0	<u>32400</u>	<u>0</u>	459.98	<u>38905</u>	0	0
<u>Total East Bay Res.</u>			<u>129840</u>	<u>-10</u>	<u>150380</u>			
TOTAL SYSTEM STORAGE			600560	-730	771295			
DISTRIBUTION SYSTEM				MOKELUMNE SYSTEM				
<u>DISTRIBUTION RESERVOIRS</u>				<u>AQUEDUCT DELIVERIES</u>				
		Storage	Operating			<u>MG</u>	<u>Flow Conditions</u>	
		<u>MG</u>	<u>Capacity</u>		Line 1	27.7	THROTTLE	
Today		331	720		Line 2	35.8	THROTTLE	
Total Previous Day		<u>321</u>			Line 3	<u>85.9</u>	<u>THROTTLE</u>	
Total Change		10			TOTAL	149.4	231 Cfs	
<u>WATER PRODUCTION</u>				<u>FSCC to MOK AQUEDUCTS (Measured at Brandt), MG</u>				
		Million	Capacity		Mok 1	0		
<u>AND DEMAND</u>		<u>Gallons</u>	<u>MGD</u>		Mok 2	<u>0</u>		
Lafayette WTP		0	25		0 MG			
Orinda WTP		120	190		<u>RIVER FLOWS AND RELEASES</u>			
San Pablo WTP		0	30		<u>Cfs</u>			
Sobrante WTP		0	50		Mokelumne River Natural Flow			
Upper San Leandro WTP		0	45		Pardee Reservoir Inflow			
Walnut Creek WTP		40.7	90		Pardee Release to Camanche Res.			
<u>TOTAL SURFACE PRODUCTION</u>					Pardee Release to JVID			
		160.7	430		Camanche Release to Mokel. River			
Miscellaneous(Estimated)		0.4						
<u>TOTAL WATER PRODUCTION</u>		<u>161.1</u>			<u>PG&E CO. STORAGE (Acre-feet)</u>			
Change in Distribution System		10					Maximum	
Wash Water from Distribution Sys.		0.9				<u>Storage</u>	<u>Change</u>	<u>Capacity</u>
<u>SYSTEM DEMAND</u>		150.2			Old Reservoirs	4637	-30	26560
East-of-Hills Demand		39.4			Salt Springs Res.	16198	81	141857
West-of-Hills Demand		110.8			Lower Bear Res.	<u>9668</u>	<u>160</u>	<u>52025</u>
<u>RAW WATER TRANSMISSION</u>					Total	30503	211	220442
	<u>Ac-ft</u>		<u>PRECIPITATION (Inches)</u>					
	<u>INPUT</u>	<u>DRAFT</u>	<u>THIS YEAR</u>			<u>AVERAGE YEAR</u>		
Briones Res.	0	34	<u>STATION</u>	<u>Today</u>	<u>This Month</u>	<u>Season to-Date</u>	<u>Season to-Date</u>	<u>Season Total</u>
San Pablo Res.	0	0	USL WTP	0	0	8.42	18.04	25.33
U. San Leandro Res.	0	0	Orinda WTP	0	0	11	22.65	32.06
<u>TOTAL</u>			Lafayette Reservoir	0	0	7.77	20.2	28.18
<u>REMARKS</u>			Walnut Creek WTP	0	0	9.11	16.69	23.02
WID Canal Diversion = 0 cfs			Camp Pardee	0	0	9.28	14.36	21.56
Mokelumne River below WID = 292 cfs			Salt Springs P.H.	0	0.14	18.09	30.42	45.51
			<u>CAPLES LAKE (7,830 FT) DATA</u>					
PG&E data as of 4:00 pm previous date.			Today		Average			
All other data as of midnight.			Snow Depth		44 Inches		74 Inches	
WTP capacities are sustainable rates.			Water Content		17.1 Inches		25.9 Inches	

EAST BAY MUNICIPAL UTILITY DISTRICT