

Water Supply Board Briefing

Water Operations Department

January 26, 2016

Water Supply Briefing



- California Water Supply
- Current Water Supply
- Water Supply Projections
- Water Supply Schedule

California Water Supply

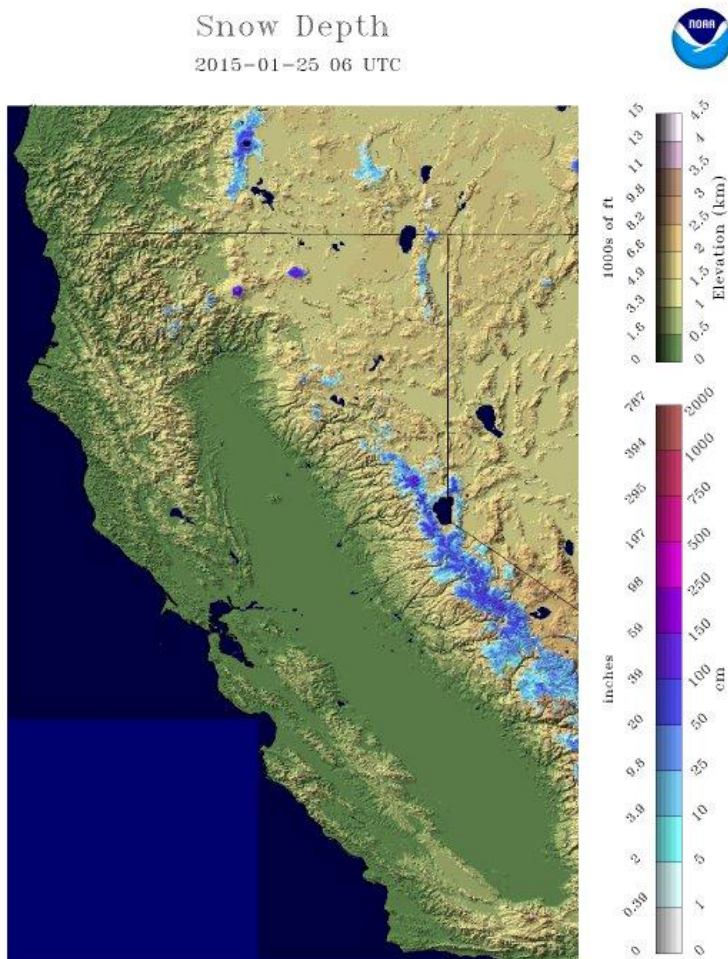
California Water Supply

Snow Depth



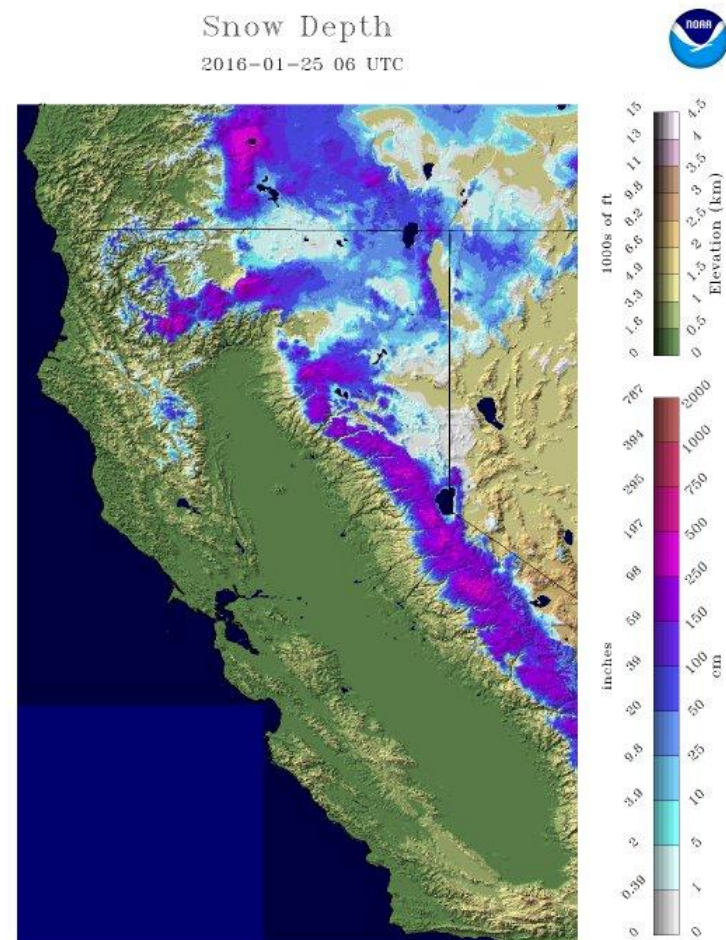
January 2015

Snow Depth
2015-01-25 06 UTC



January 2016

Snow Depth
2016-01-25 06 UTC



California Water Supply

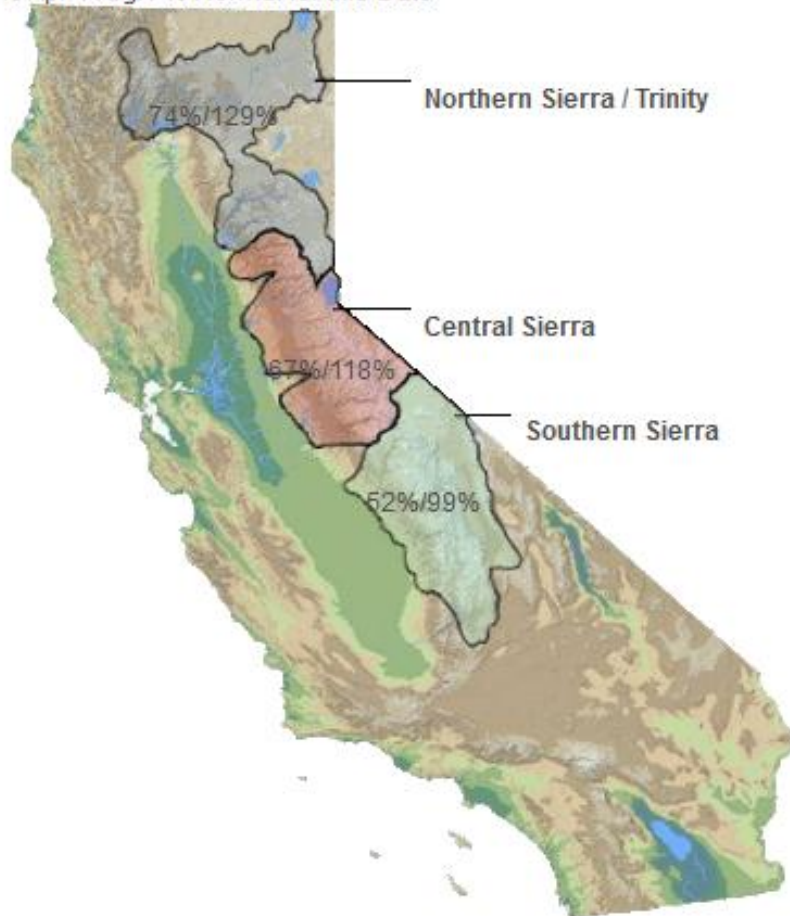
Snowpack – 2015 vs. 2016



Provided by the California Cooperative Snow Surveys

Data For: 25-Jan-2016

% Apr 1 Avg. / % Normal for this Date



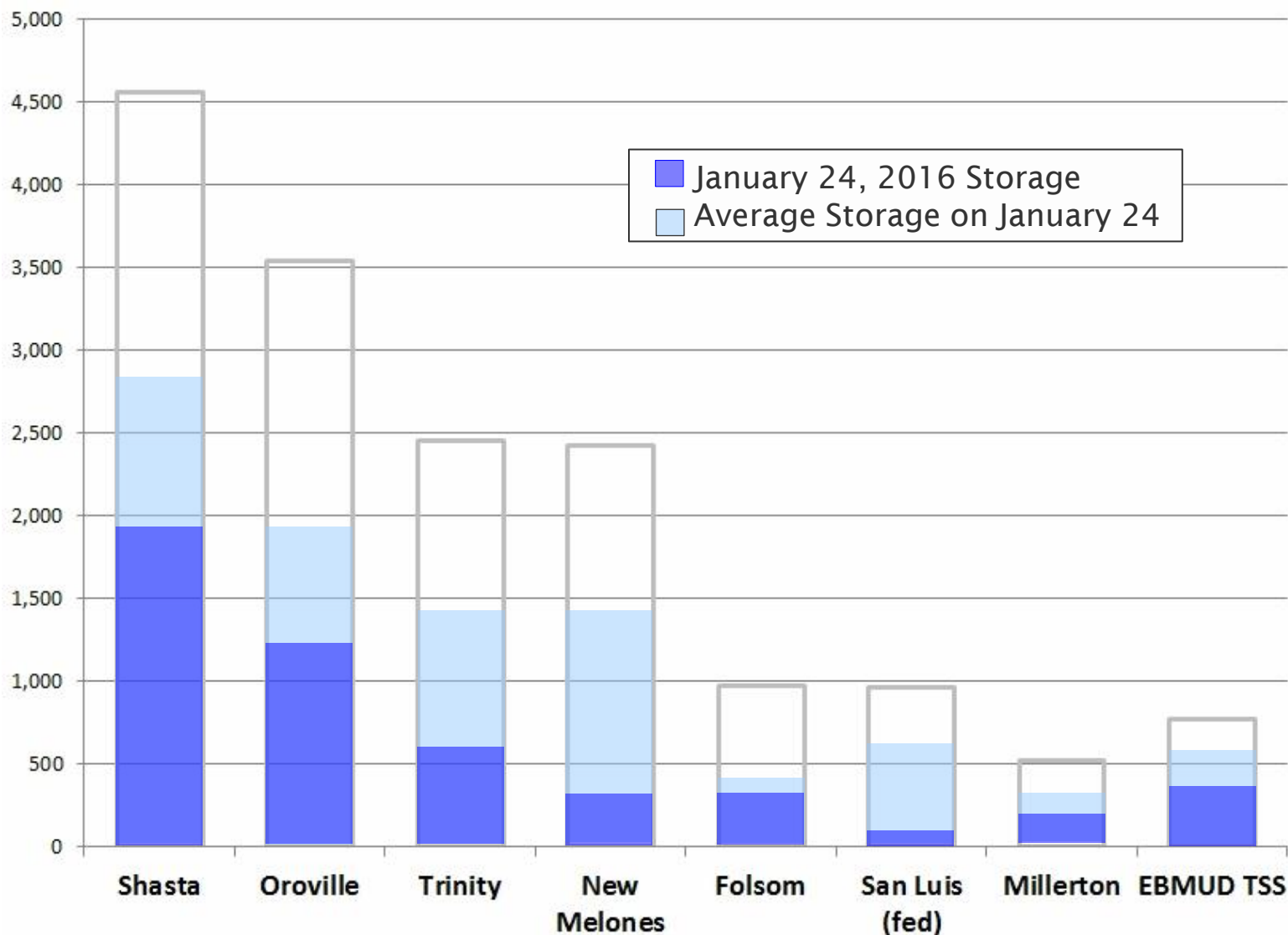
Automated Snow Measurements – Snow Water Equivalents

Year	% of Normal on January 25
2015	27%
2016	117%

- Snow station surveys conducted around January 1, 2016
- Manual readings confirm preliminary automated measurements

California Water Supply

Reservoir Storage – January 24



California Water Supply

Oroville Rise



CA Department of Water Resources

Sep. 8, 2015



CA Department of Water Resources

Jan. 20, 2016

California Water Supply

DWR – State Water Project (SWP)



Oroville Dam

State Water Project

- Supplies 29 water agencies (25 million Californians and 750,000 acres of farmland)
- Delivers water to two-thirds of California's population

Water Allocation

- 15% for WY2015
- 10% for WY2016 – Initial Allocation (December 1, 2015)

California Water Supply

USBR – Central Valley Project (CVP)

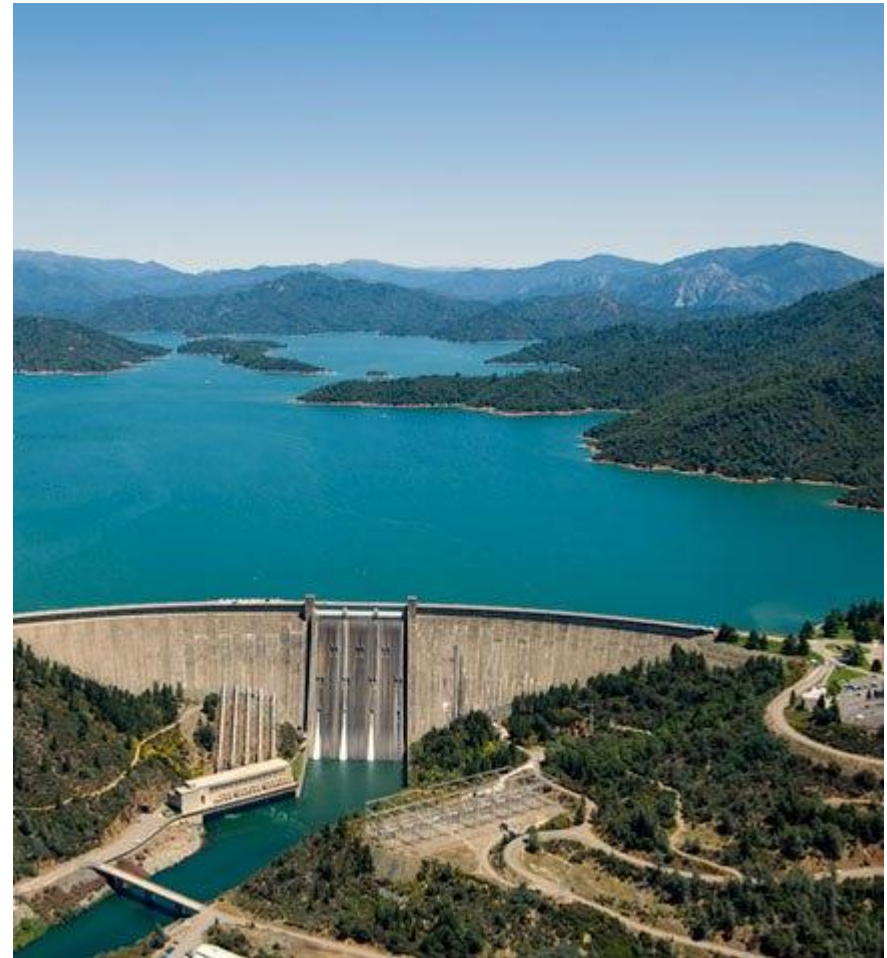


Central Valley Project

- Supplies about a million California homes and 3 million acres of agricultural land
- Dedicates water to support fish and wildlife habitat
- EBMUD CVP Contract max annual drought supply = 133 TAF

Water Allocation

- 50% for WY2014
- 25% for WY2015
- Initial allocation expected in late February 2016

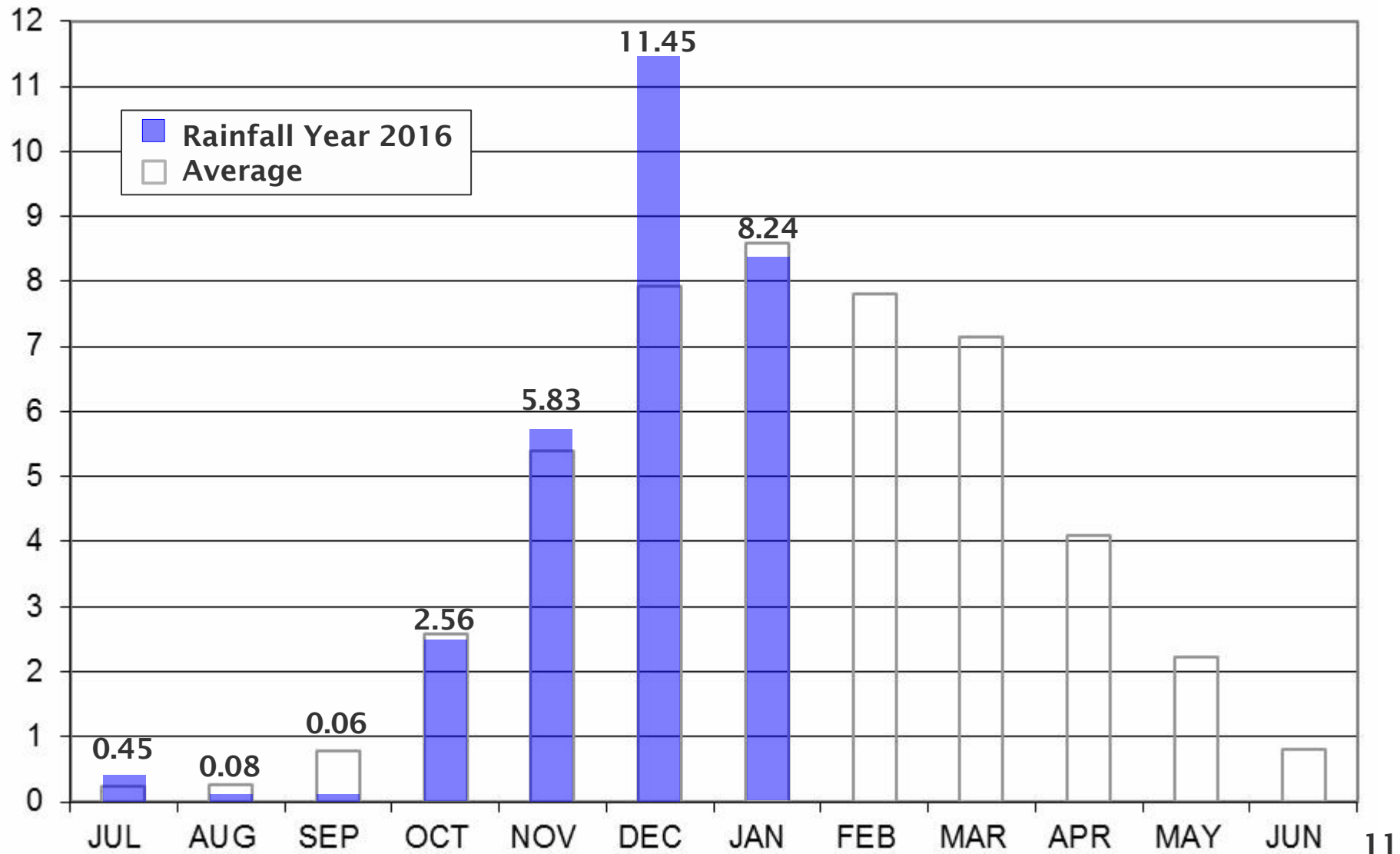


Shasta Dam

Current Water Supply

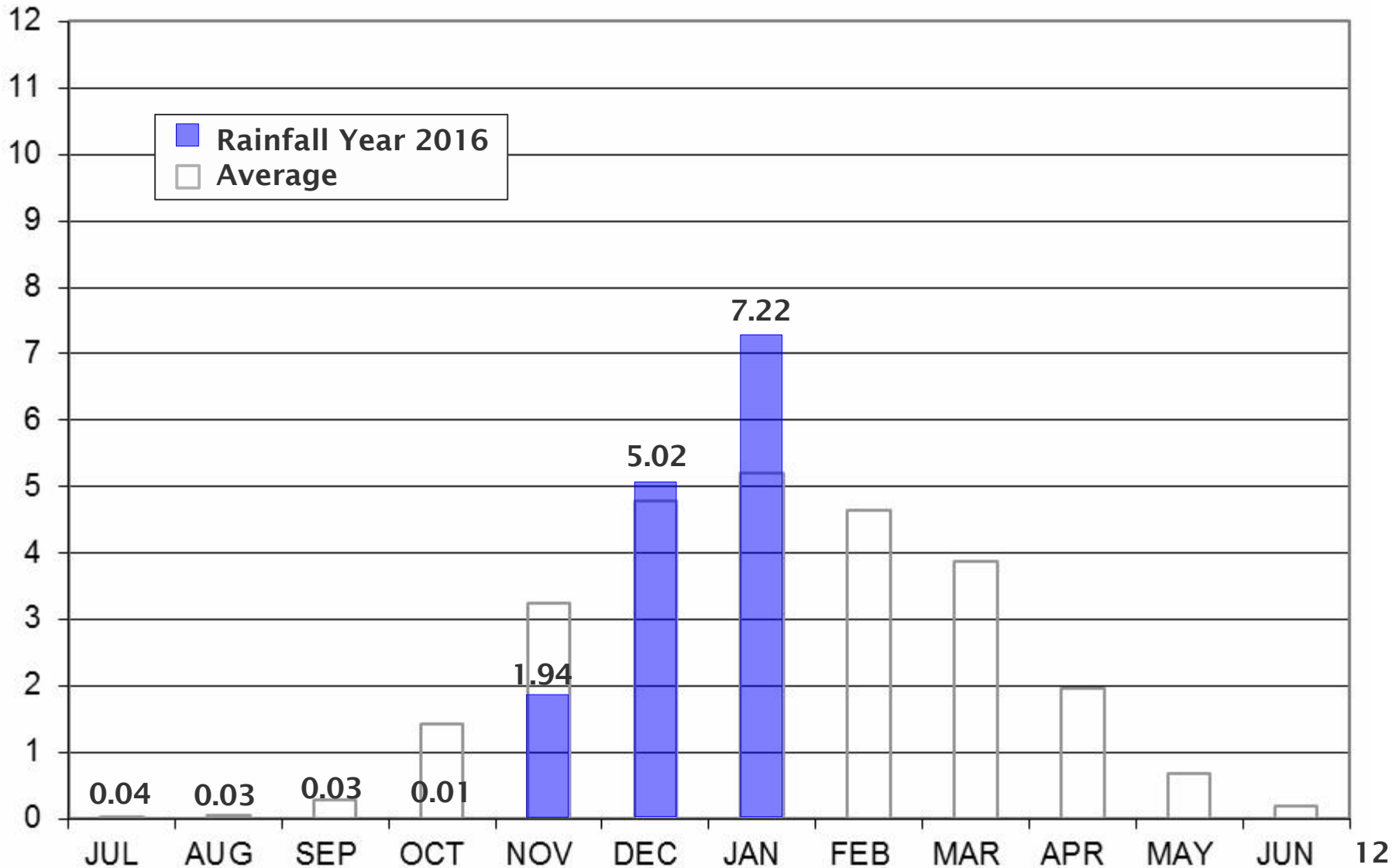
Current Water Supply

Mokelumne Precipitation



Current Water Supply

East Bay Precipitation



Current Water Supply

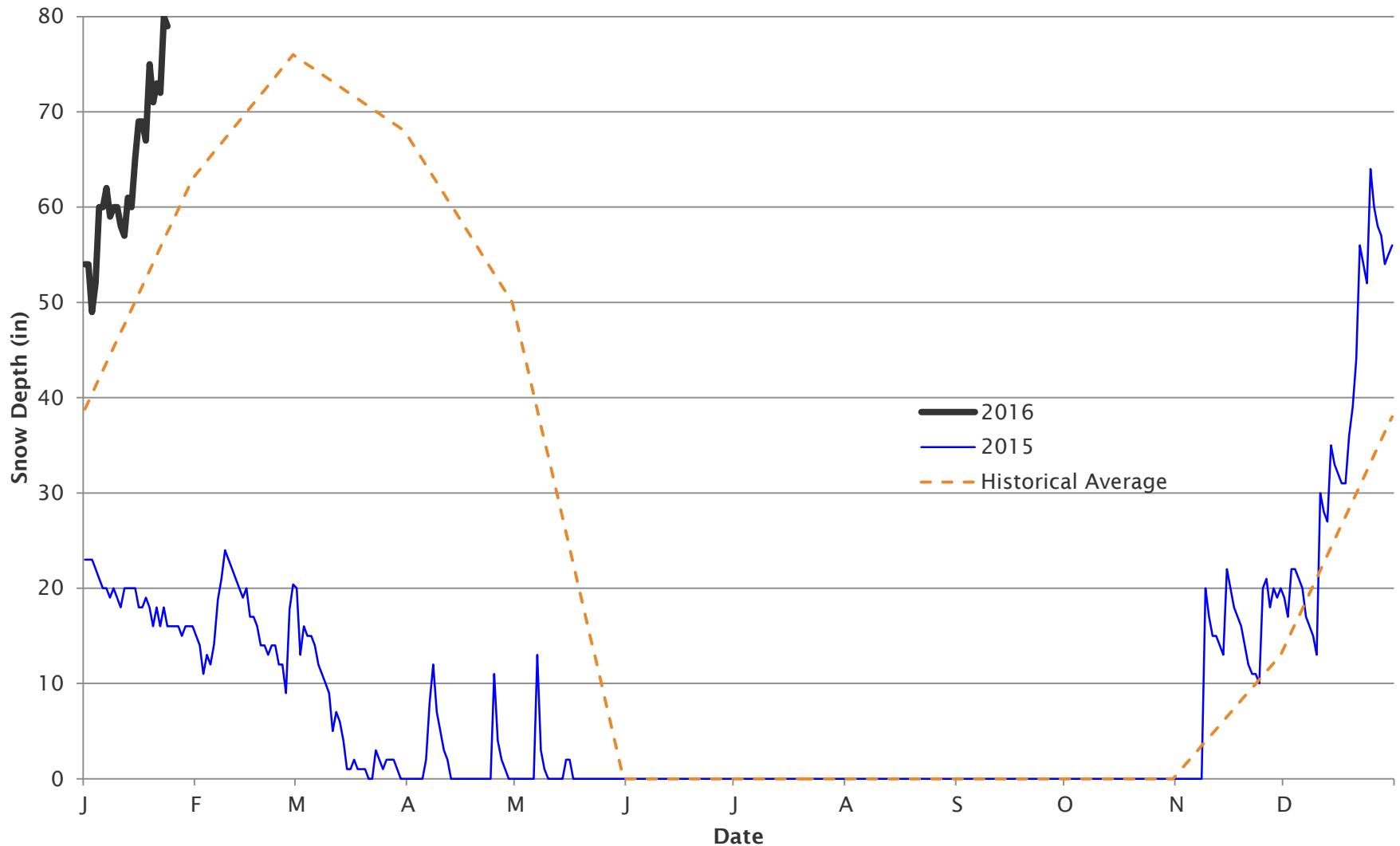
Precipitation & Snow



As of 1/24/2016	Cumulative Precipitation	% of Average
East Bay		
East Bay Watershed	14.27"	102%
Mokelumne Basin		
4-Station Average	28.67"	119%
Caples Lake Snow Depth	79"	138%
Caples Lake Snow Water Content	24.12"	132%

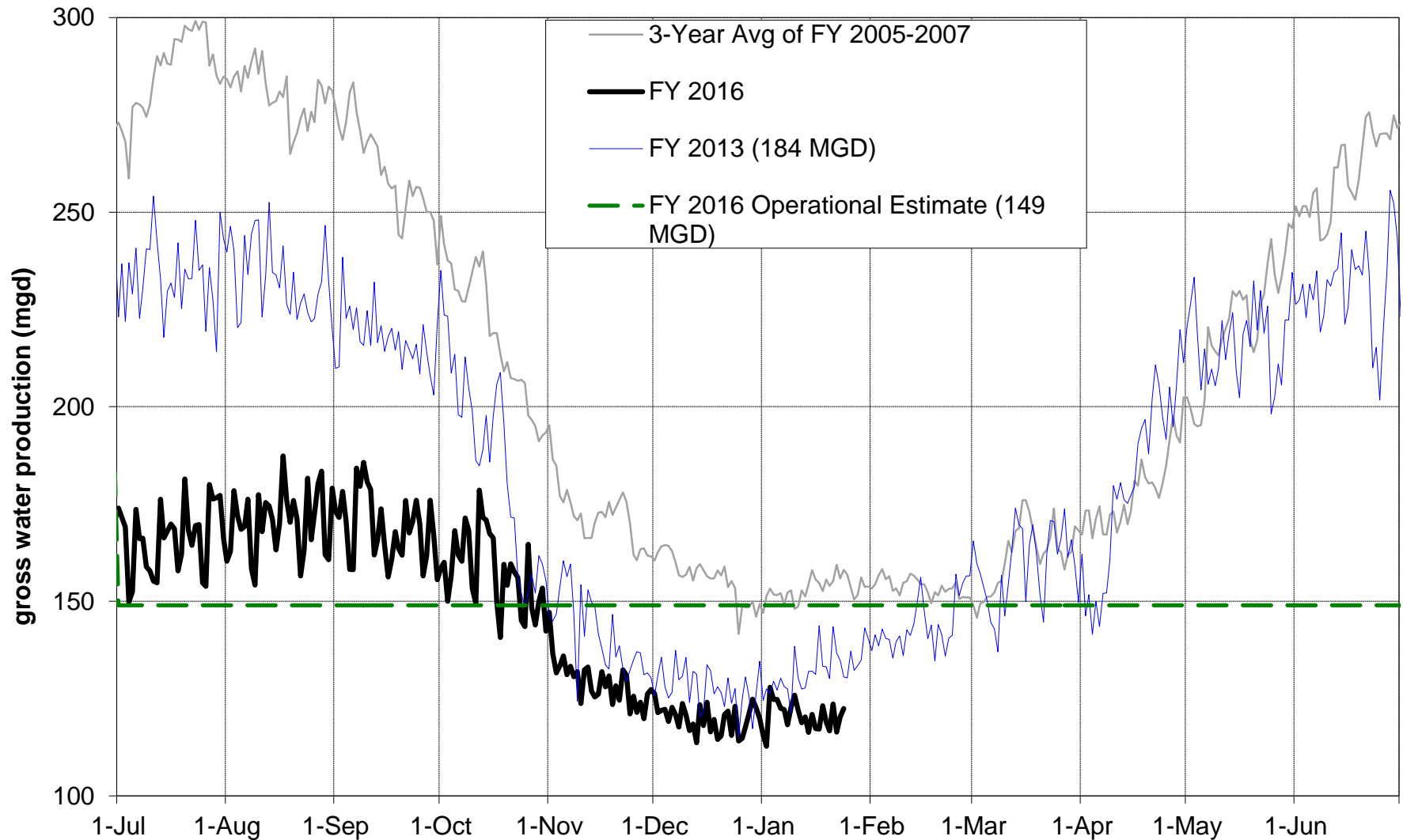
Current Water Supply

Caples Lake Snow Depth



Current Water Supply

Gross Water Production



Current Water Supply

Customer Demand Savings



Calendar Year	Savings Rate (2013 Baseline)	Savings Rate (Avg of 2005-2007 Baseline)
2014	15%	22%
2015	22%	29%

Current Water Supply

Reservoir Storage



As of 1/24/16	Current Storage	Percent of Average	Percent of Capacity
Pardee	165,550 AF	87%	77%
Camanche	134,800 AF	35%	22%
East Bay	125,760 AF	99%	83%
Total System	369,080 AF	66%	48%

Water Supply Projections

Water Supply Projections

(Runoff Projections as of January 24, 2016)



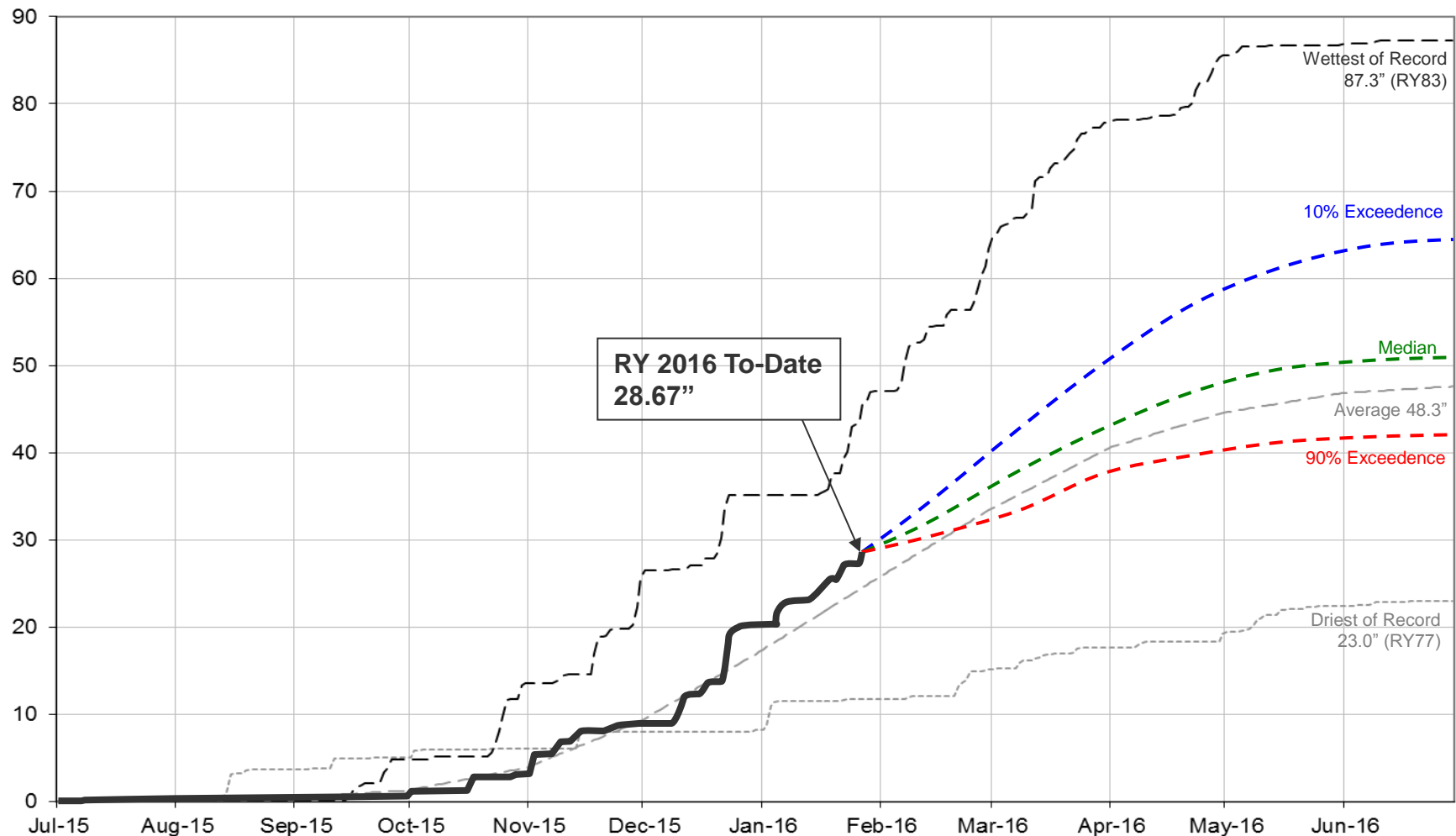
Forecast	Annual Runoff	Total System Storage (on Sept 30, 2016)
90% Exceedence (9 of 10 years are wetter)	580 TAF	495 TAF
50% Exceedence (5 of 10 years are wetter)	790 TAF	630 TAF
10% Exceedence (1 of 10 years is wetter)	1,120 TAF	630 TAF
Average Year	745 TAF	630 TAF

Water Supply Projections

Mokelumne Precipitation Rainfall Year 2016



Mokelumne 4-Station Average Precipitation (in)
Rainfall Year 2016 Projection



Water Year 2016

As of January 24, 2016



- Mokelumne River basin runoff is 70 TAF
- Projected end of water year storage is 495– 630 TAF
- Mokelumne River watershed season to date precipitation is 119% of average
- East Bay watershed season to date precipitation is 102% of average
- Precipitation accumulation season – 51% complete (49% remaining)

Water Year 2016

Water Supply Schedule



Date	Activity
Feb 1	<ul style="list-style-type: none">• DWR February Snow Survey
Feb 20	<ul style="list-style-type: none">• USBR Initial Allocation
Feb 23	<ul style="list-style-type: none">• Drought Financial Impacts
Mar 1	<ul style="list-style-type: none">• DWR March Snow Survey
February to April	<ul style="list-style-type: none">• Water Supply Updates• Continue public outreach
April 1	<ul style="list-style-type: none">• DWR April Snow Survey
April 26	<ul style="list-style-type: none">• Water Supply Availability and Deficiency Report• Consider approval of Freeport use



Hoping for the parade of storms to continue into February

