

Project Labor Agreements

Board Meeting

February 11, 2014

Outline



- PLA Background
- PLA History at the District
- Other Agency Experiences
- Pilot PLA
- Recommended Next Steps

PLA Background



- Project-specific agreement negotiated between an owner and a union trades council
- Typically covers work rules, wages
- Typically contains no-strike provision
- Often contains social justice and health & safety components

PLA History at the District



- PLA's pursued in 1999 for two projects but not implemented:
 - WC-SRV Improvements (\$200M)
 - Freeport Projects (\$440M)
- Most likely benefit is assurance of no labor work stoppage on large, complex and time-sensitive projects
- District construction projects have not experienced significant labor work stoppage

Other Agency Experiences

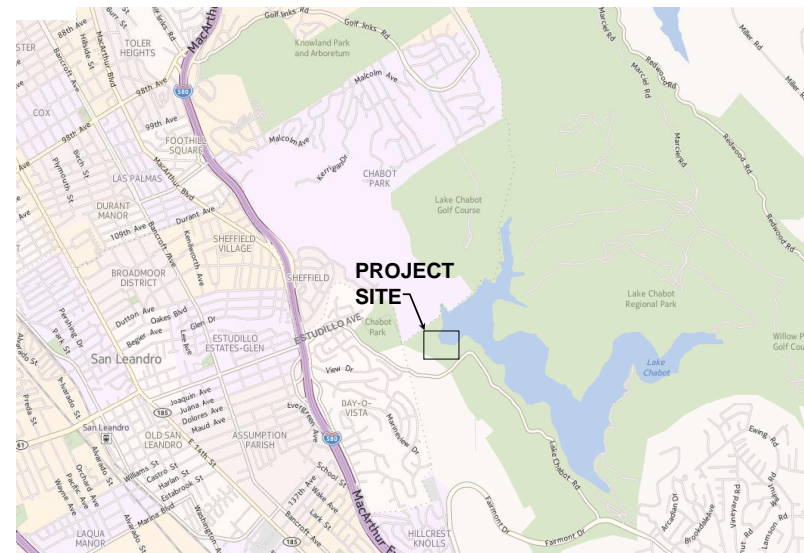


- Various options exist with varying cost and level of effort
- Case-by-case vs. Multi-project
 - Contra Costa Water District (case-by-case)
 - San Francisco Water System Improvement Program (\$5M threshold)
 - Port of Oakland, Contra Costa County and Alameda County (\$1M threshold)

Pilot PLA



- Implement PLA on Chabot Dam Seismic Upgrade project
 - Currently in planning phase
 - Requires third-party labor compliance program which has synergy with PLA
- Gain experience with level of effort
 - Cost to negotiate and administer
 - Impact on project schedules
 - Contractor feedback



Recommended Next Steps



- Select consultant and consider PLA negotiation principles
- Negotiate, prepare and consider PLA document
- Advertise and award construction contract

Water Supply Briefing and Dry Year Planning

February 11, 2014

Water Supply Briefing



- Statewide Water Supply Status
- Precipitation & Snow
- Reservoir Storage
- Water Supply Forecast
- Dry Year Planning
- Next Steps



California Snow

January 2013 vs January 2014





Oroville Dam

State Water Project

- Supplies 29 water agencies (25 million Californians and 750,000 acres of farmland)
- Delivers water to two-thirds of California's population

Water Allocation

- Zero projected
- First time allocation this low in 54-year history
- 1991 – zero allocation for agriculture, 30% allocation for urban.

Communities at risk of running out of water in 60-120 days



Severe water shortages

State health officials on Tuesday identified 17 small community water districts in 10 counties that are at risk of running out of water in 60-120 days due to the drought.



- 3 KERN COUNTY**
 - Boulder Canyon Water Association
 - Camp Condor
 - Cypress Canyon Water System
 - Lake of the Woods Mutual Water Co.
- 4 MADERA COUNTY**
 - Bass Lake Water Co.
- 5 MARIPOSA COUNTY**
 - Whispering Pines Apartments
- 6 MENDOCINO COUNTY**
 - Brooktrails Township Community Services District
 - Redwood Valley Community Water District
 - Willits
- 7 NEVADA COUNTY**
 - Washington Ridge Conservation Camp
- 8 PLACER COUNTY**
 - Ophir Gardens
- 9 SANTA CRUZ COUNTY**
 - Lompico County Water District
- 10 SONOMA COUNTY**
 - Cloverdale
 - Healdsburg

Source: California Department of Public Health

BAY AREA NEWS GROUP

DWR Feb 2014 Snow Survey



Area	Snow Water Content
	% of Feb 1 Average
Statewide	9%
Mokelumne Watershed	10%



What's That Wet Stuff?



Dates	Days	Mokelumne Precipitation	East Bay Precipitation
Jul 1, 2013 – Jan 28, 2014	212 days	4.66 inches	2.57 inches
Jan 29 – Feb 10, 2014	13 days	9.57 inches	4.62 inches
Rainfall Year 2014 To-Date	224 days	14.23 inches	7.19 inches

Statewide Snow Water Content

Updated February 9

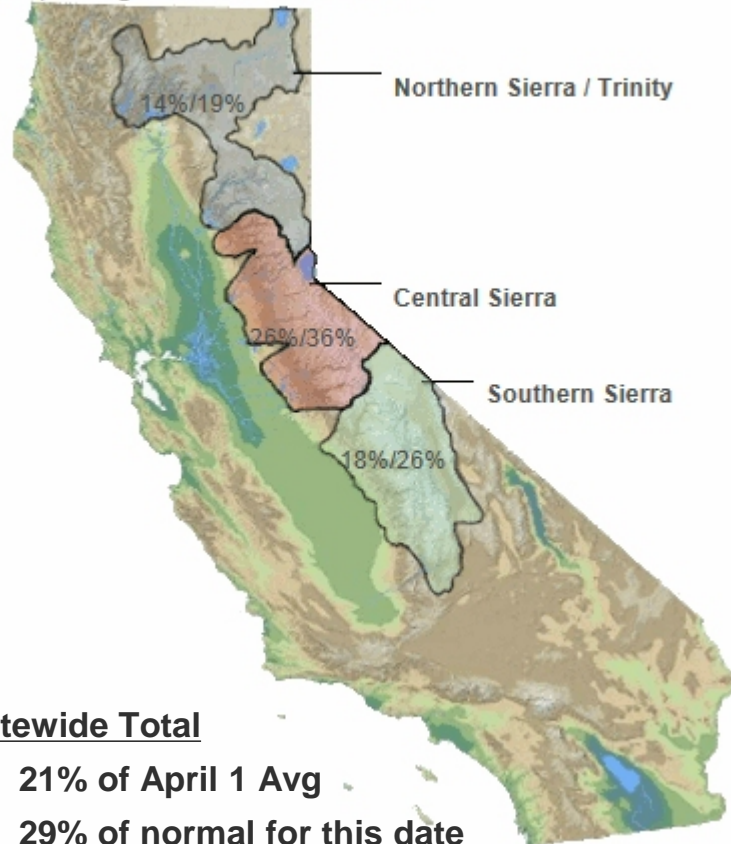


Snow Water Equivalents

Provided by the California Cooperative Snow Surveys

Data For: 11-Feb-2014

% Apr 1 Avg. / % Normal for this Date



Statewide Total

- 21% of April 1 Avg
- 29% of normal for this date



Statewide Storage

More Water, But Still Below Normal



FOLSOM LAKE

Major Reservoir	Change in Capacity (Feb 4-10)	Elevation Change (Feb 4-10)	Percent of Normal
Folsom	+5%	~17ft	48%
Oroville	+1%	~8 ft	63%
Shasta	+1%	~1 ft	54%
New Melones	Slight change	~1 ft	67%
Trinity	No change	~0 ft	69%
Pardee	+1%	~1 ft	91%
Camanche	No change	~0 ft	80%

Statewide Water Supply Status

(Storage in Thousand Acre-Feet)



Reservoir	Capacity	WY 2013	WY 2014	Percent of Capacity	Percent of Average	Supply Condition
Trinity	2,448	1,962	1,159	47	69	Poor
Shasta	4,552	3,523	1,666	36	54	Poor
Oroville	3,538	2,748	1,310	36	63	Poor
Folsom	977	572	215	22	48	Critical
New Melones	2,420	1,631	1,051	43	67	Poor
Fed. San Luis	966	752	333	34	43	Critical
Millerton	520	323	187	36	62	Poor

EBMUD System	767	621	481	63	84	Fair
---------------------	------------	------------	------------	-----------	-----------	-------------

Current Precipitation & Snow

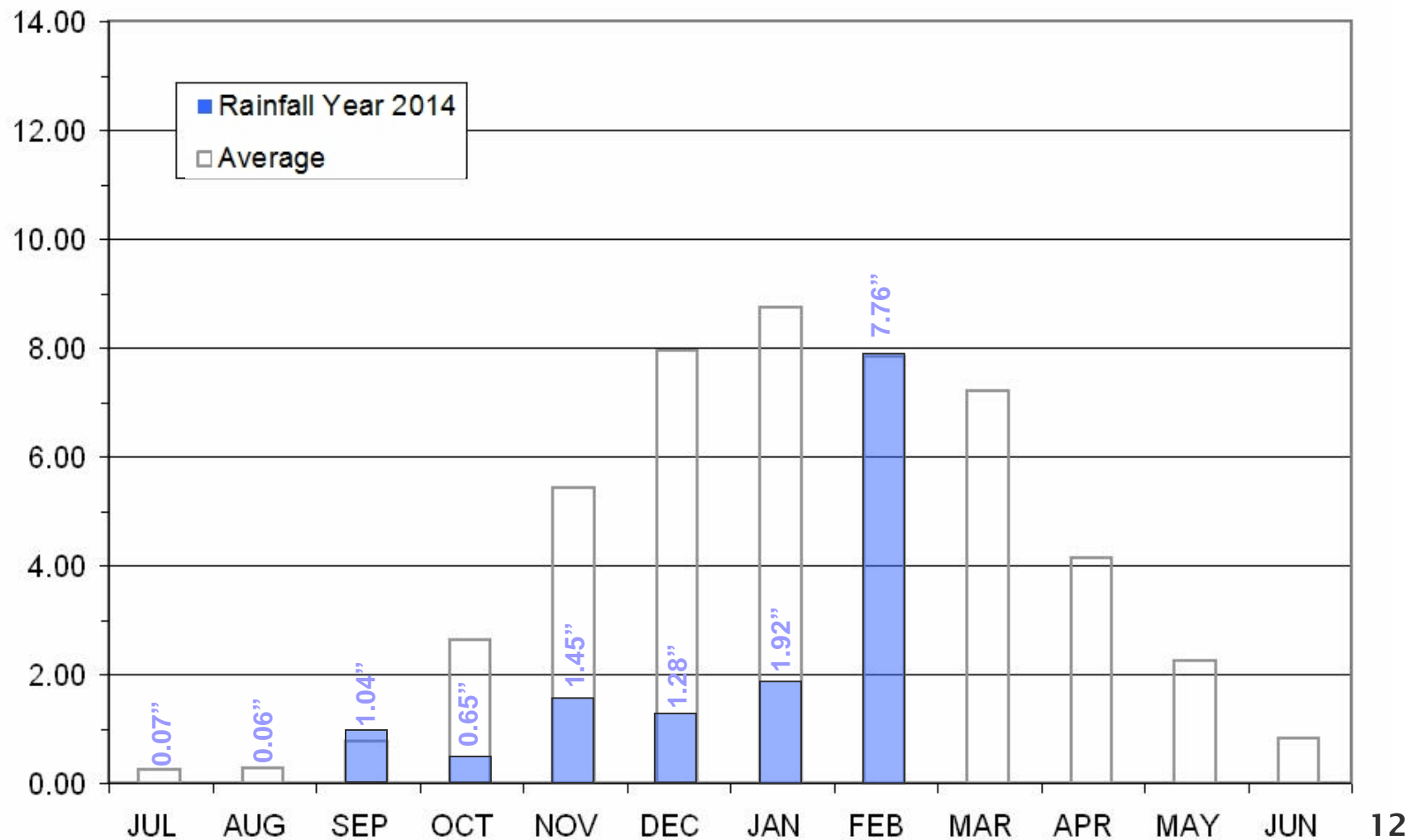


As of 02/10/14	Cumulative Precipitation	% of Average
East Bay		
East Bay Watershed	7.19"	42%
Mokelumne Basin		
4-Station Average	14.23"	49%
Caples Lake Snow Depth	42"	62%
Caples Lake Snow Water Content	8"	36%

Current Mokelumne Precipitation



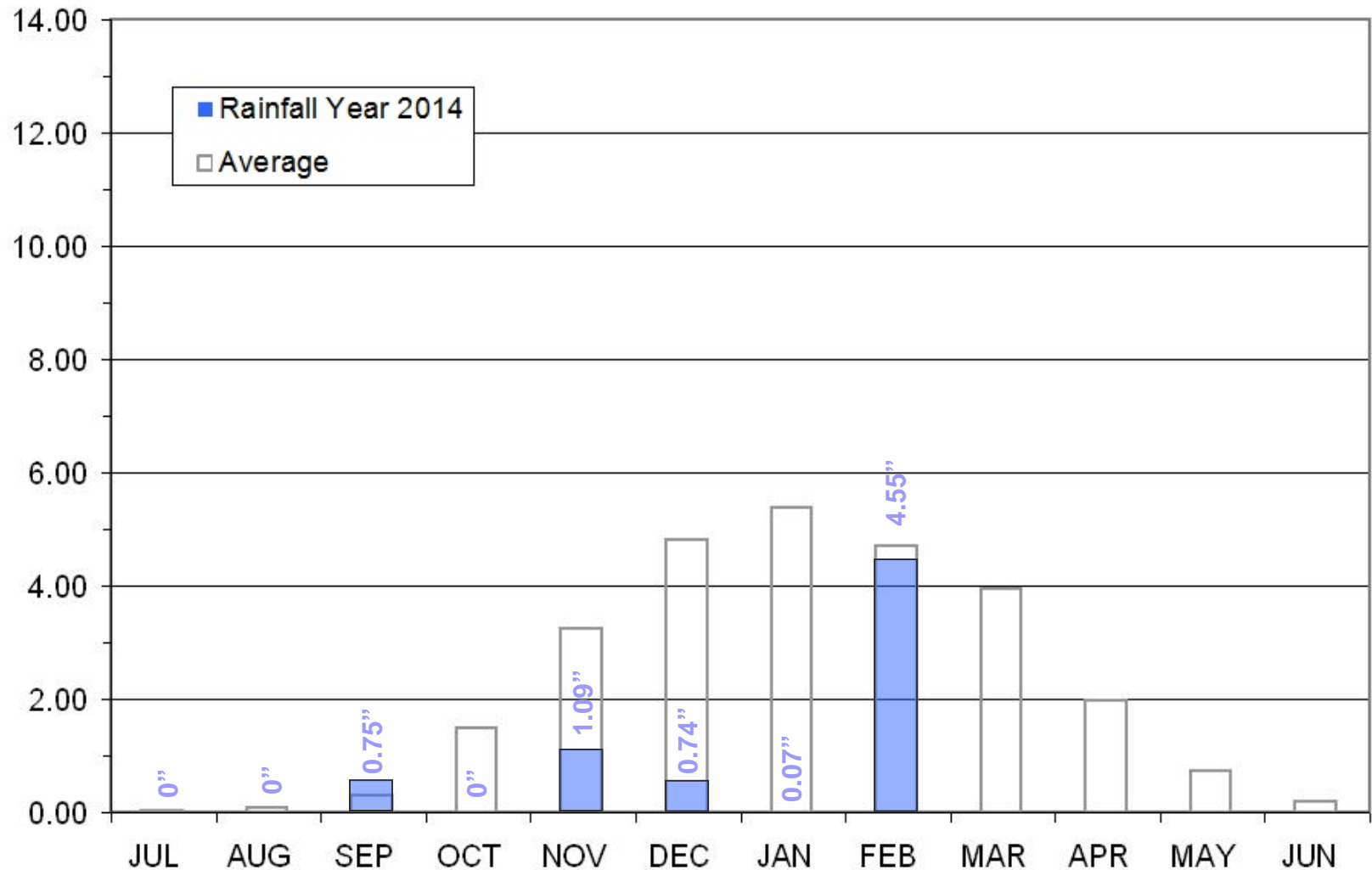
Mokelumne 4-Station Average Precipitation (in)



Current East Bay Precipitation

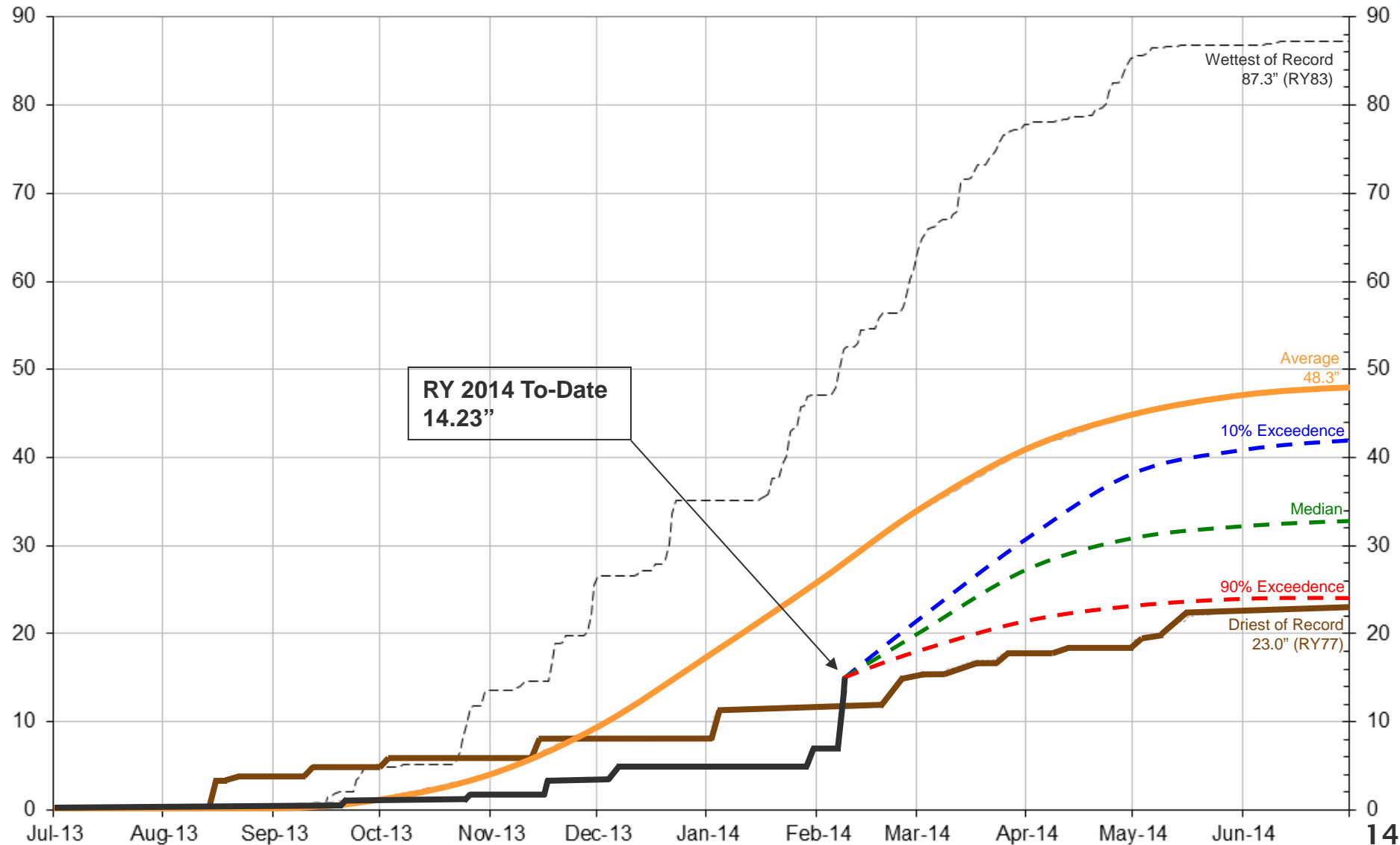


East Bay Precipitation (in)



Rainfall Year 2014 Projection

Mokelumne Precipitation



Current Reservoir Storage



As of 02/10/14	Current Storage	Percent of Capacity	Percent of Average	Supply Condition
Pardee	161,440 AF	82%	92%	Good
Camanche	210,030 AF	50%	79%	Fair
East Bay	112,120 AF	74%	86%	Fair
Total System	483,590 AF	63%	85%	Fair

Water Supply Runoff Forecast (Projections as of February 11, 2014)



Forecast	Annual Runoff	Total System Storage (on Sept 30, 2014)
90% Exceedence (9 of 10 years are wetter)	160 TAF	340 TAF
50% Exceedence (5 of 10 years are wetter)	360 TAF	480 TAF
10% Exceedence (1 of 10 years is wetter)	560 TAF	620 TAF
Average Year	745 TAF	630 TAF

Water Year 2014



- Rainfall Year 2014 is the fourth driest year in the Mokelumne watershed
- 40% of the precipitation accumulation season remains
- Received only 25,000 acre-feet of runoff to date
- End of September storage is forecasted to be 340,000 - 480,000 acre-feet

Meeting Dry Year Needs



CONSERVATION



FREEPORT

RECYCLING



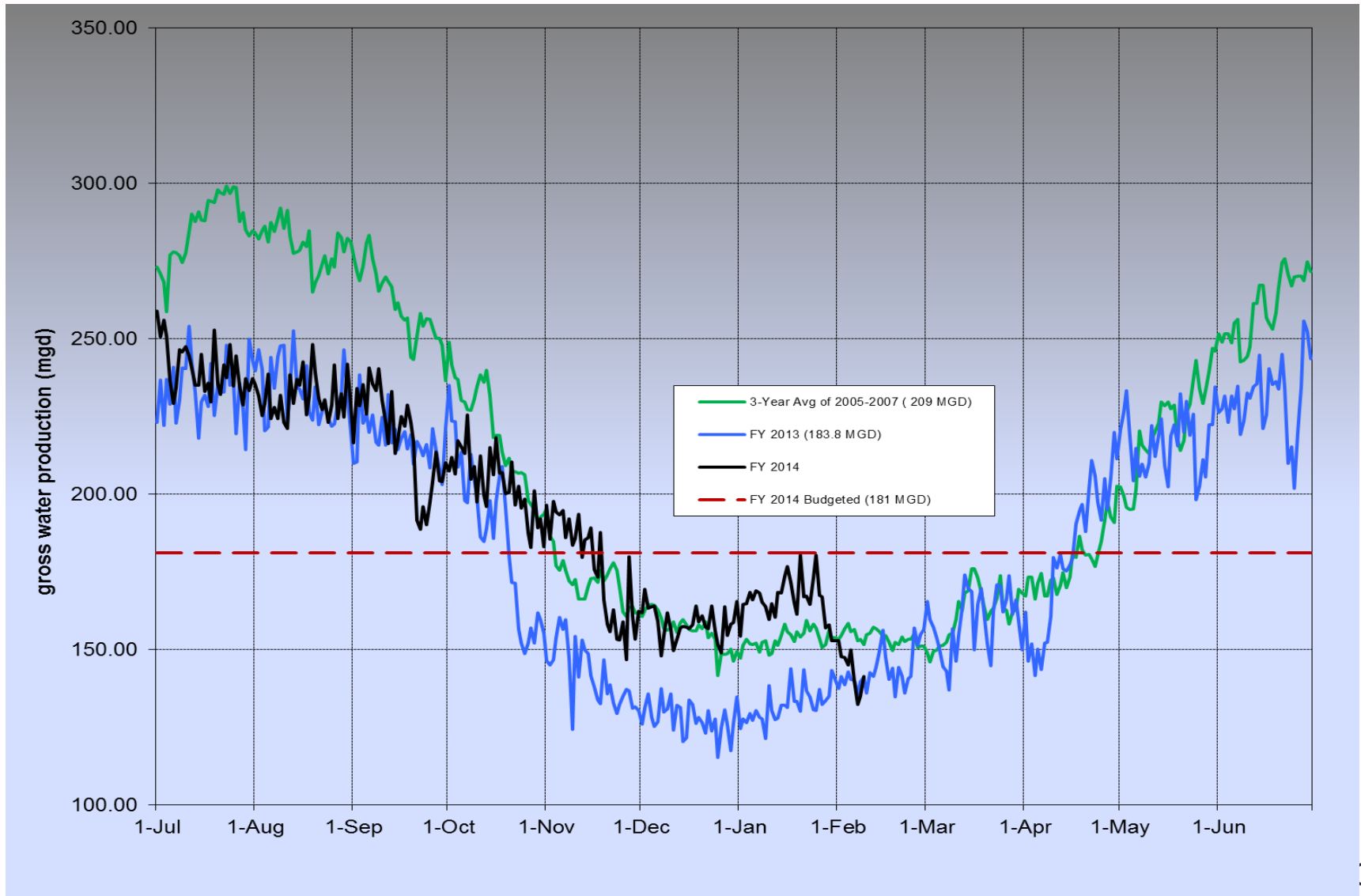
INTERTIES

Central Valley Project Supply



- Scheduled to conduct Freeport biological testing in April
- Will be requesting 1,900 acre-feet of water for testing
- Will submit preliminary request for water to U.S. Bureau of Reclamation assuming continuing dry conditions

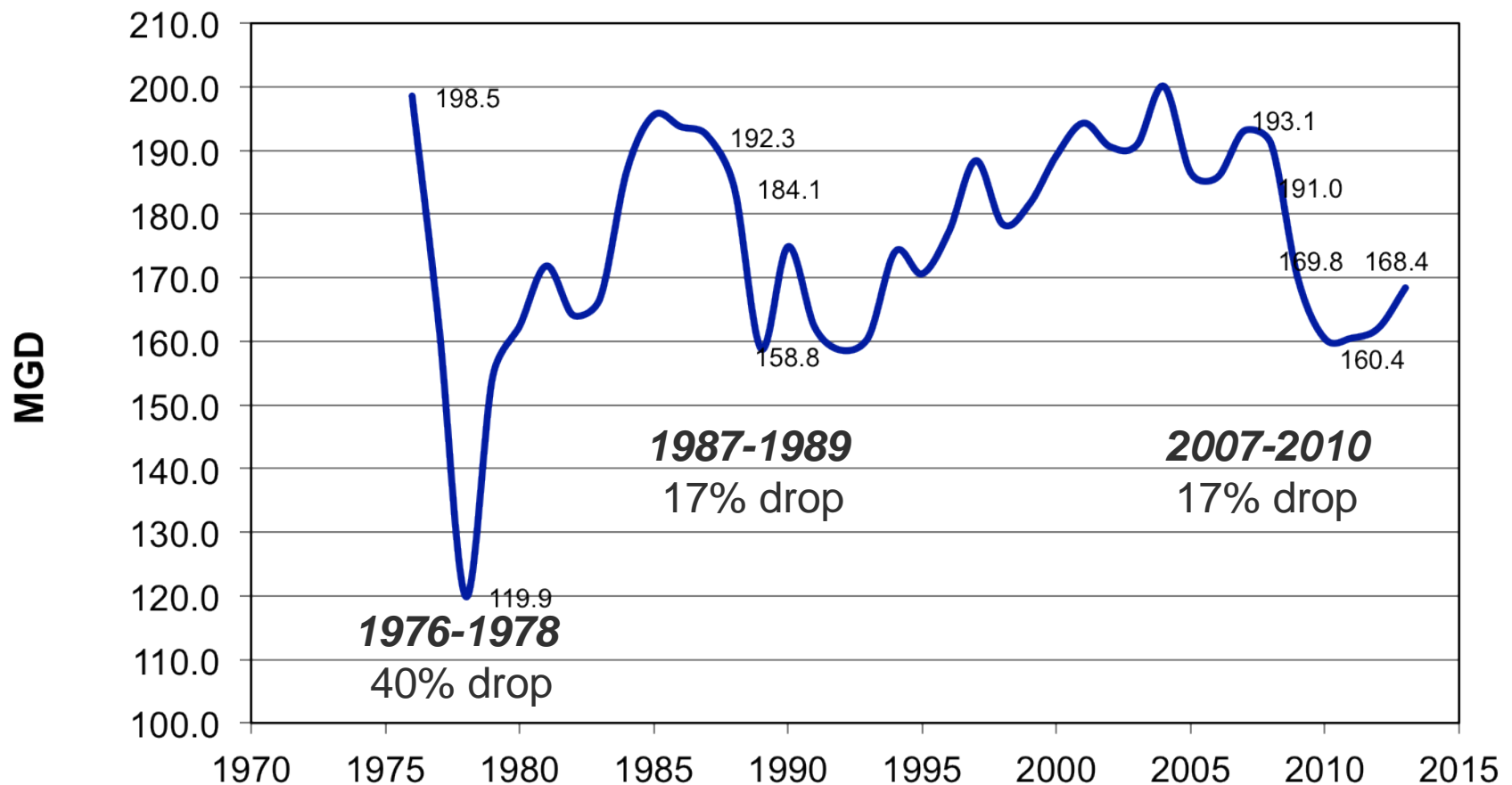
Current Gross Water Production



Historic Metered Consumption



Metered Consumption



Next Steps



- Request that all customers voluntarily reduce their water use by ten percent
- Continue to monitor and report on the District's water supply
- Continue to update the Bureau of Reclamation
- Continue public outreach

Schedule



Date	Activity
February 25	<ul style="list-style-type: none">• Water supply forecast• Continue public outreach• USBR scheduled to announce allocations
March 1	<ul style="list-style-type: none">• Water supply forecast• USBR start of CVP contract year
March 11	<ul style="list-style-type: none">• Water Supply forecast• Continue public outreach
March 25	<ul style="list-style-type: none">• Water Supply forecast• Continue public outreach
April 8	<ul style="list-style-type: none">• Water Supply forecast• Consider Water Supply Availability and Deficiency Report• Consider adoption of Water Shortage Response Plan• Consider declaring a water shortage• Consider approval of the use of Freeport

Valentine's Day Wish?



Outreach Goals

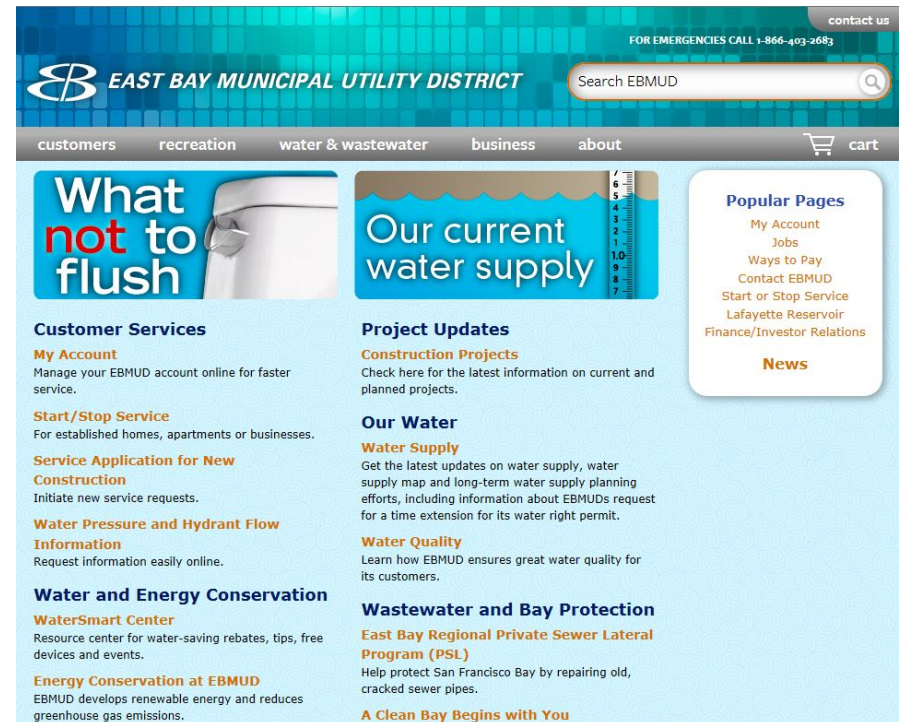


- Announce the water reduction target
- Explain the need for voluntary cutbacks
- Give specific information to customer classes about what they can do
- Offer free devices and technical assistance to help customers conserve
- Thank routine conservers

Announcement Actions



- Press release
- President Katz letter to service area key stakeholders
- Website homepage update
- General Manager email to employees



Conservation Tools & Services



- Free water saving devices
- Commercial and residential landscape water budgets
- WaterSmart business certification outreach
- Single family home water report pilot expansion
- Conservation rebate offers



Conservation Education



- Website resources
- Classroom materials
- Presentations
- Fact sheets
- Handouts



Conservation Education, cont.



- Top of bill notices
- Door hangers
- Targeted mailings
- EBMUD workshops
- Fix-a-leak week
- Billboards

EAST BAY MUNICIPAL UTILITY DISTRICT

EBMUD has declared a severe water shortage emergency and **mandatory water rationing is in effect.**

WaterSmart

drought it is vital to reduce water use and conserve our limited supply.

Please visit www.ebmud.com or call, toll-free, 1-866-403-2683 for information on rebates and to order free water-saving devices. You can also schedule a free water audit.

WaterSmart Home Survey Kit

water SMART

Put food waste in the trash or green bin and avoid using the garbage disposal.

Thanks for all you do to help save water.

EBMUD

The flyer features a large image of a water faucet with a single drop of water falling from it. The text is arranged in a clean, professional layout with a mix of bold and regular fonts. The EBMUD logo is prominently displayed at the top and bottom.

Customer Feedback

- Contact Center
- Customer surveys
- Presentations
- Website
- Water use data

