

Water Supply Board Briefing

Water Operations Department

November 22, 2016

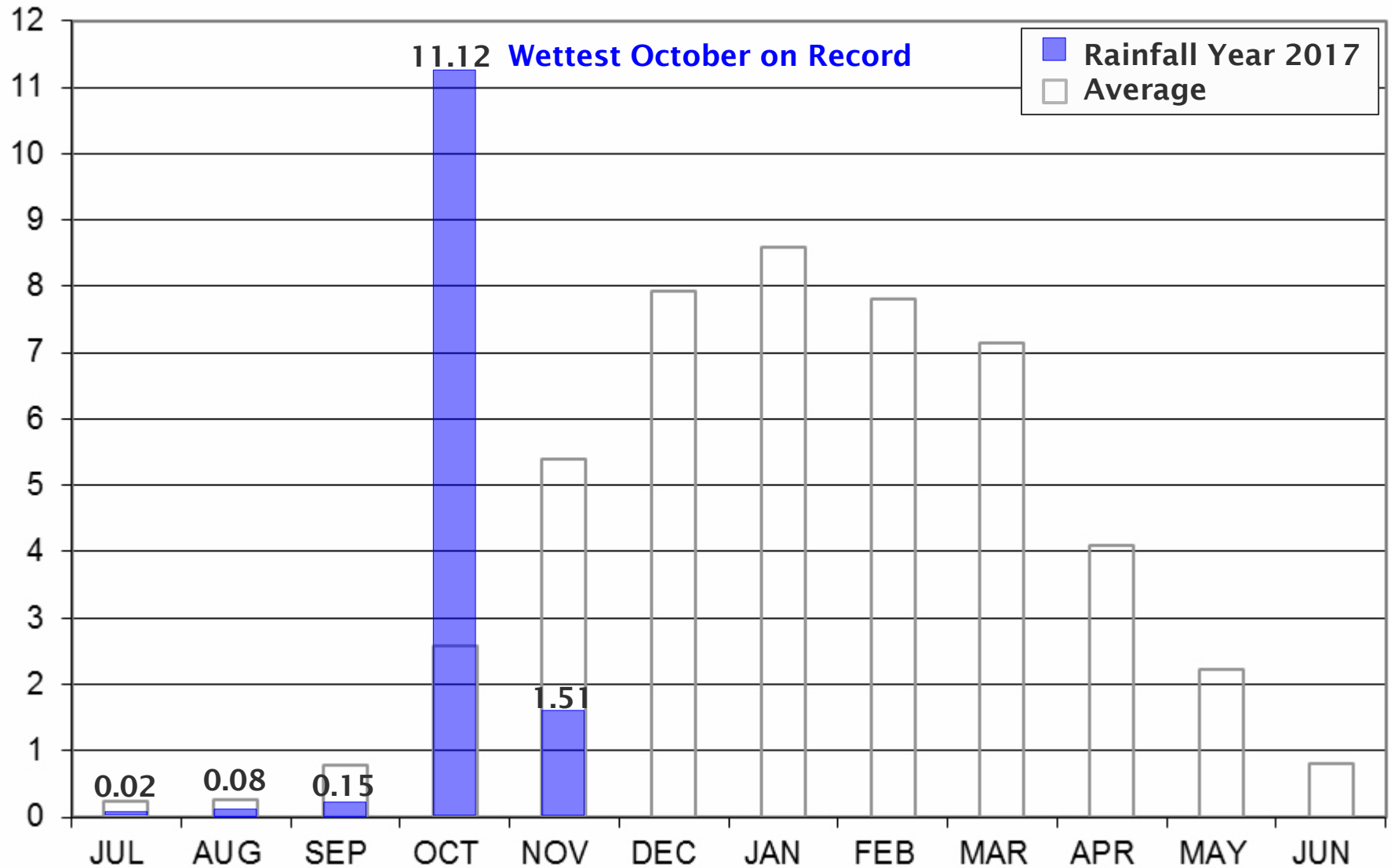
Water Supply Briefing

- Precipitation
- Storage
- Gross Water Production
- Water Supply Projections



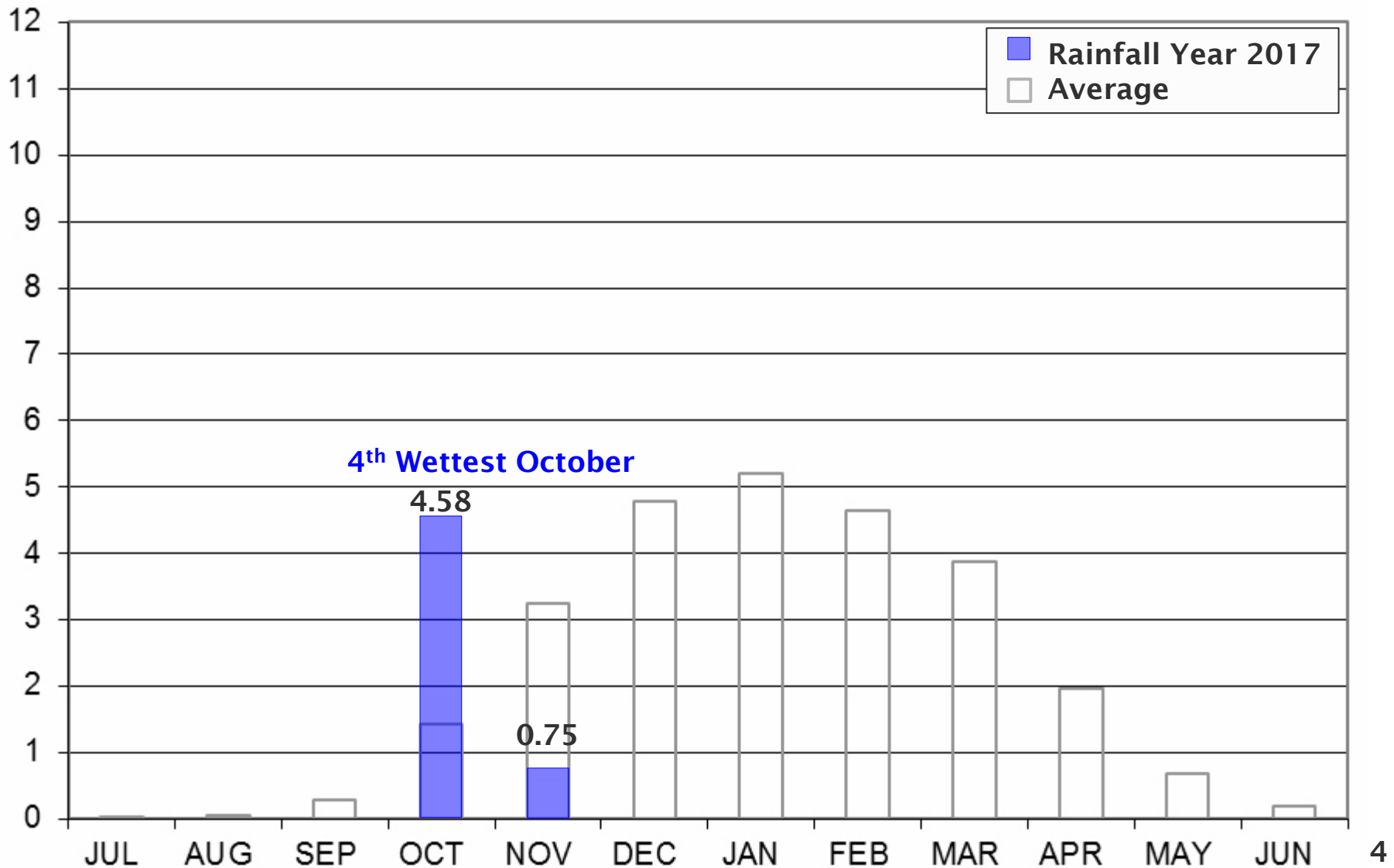
Current Water Supply

Mokelumne Precipitation



Current Water Supply

East Bay Precipitation



Current Water Supply

Precipitation



As of 11/21/2016	Cumulative Precipitation	% of Average
East Bay		
East Bay Watershed	5.33"	130%
Mokelumne Basin		
4-Station Average	12.88"	167%
Caples Lake Snow Depth	9"	99%
Caples Lake Snow Water Content	0.7"	35%

Current Water Supply

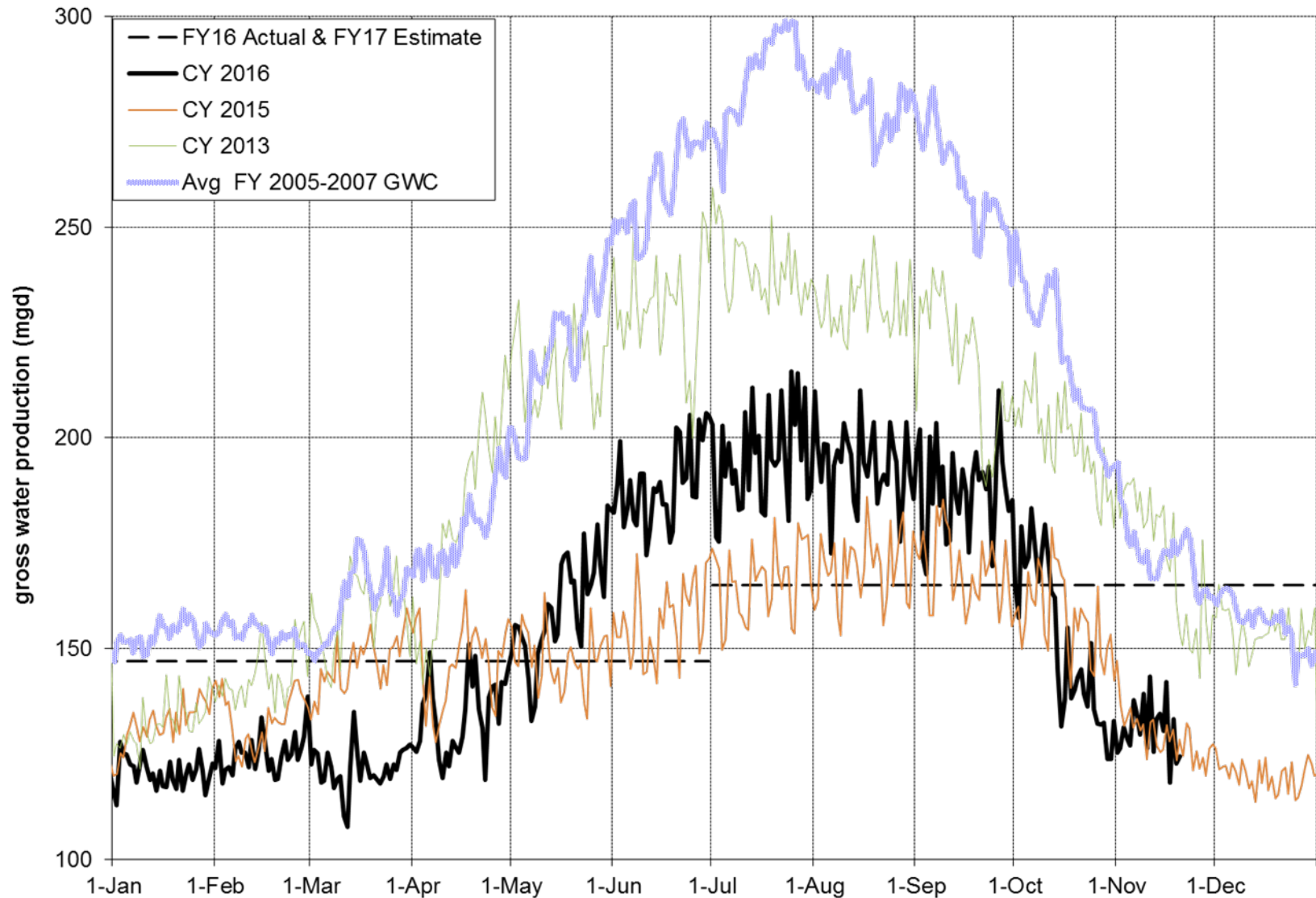
Reservoir Storage



As of 11/21/16	Current Storage	Percent of Average	Percent of Capacity
Pardee	192,000 AF	111%	94%
Camanche	281,190 AF	110%	67%
East Bay	136,800 AF	120%	91%
Total System	609,990 AF	112%	79%

Current Water Supply

Gross Water Production

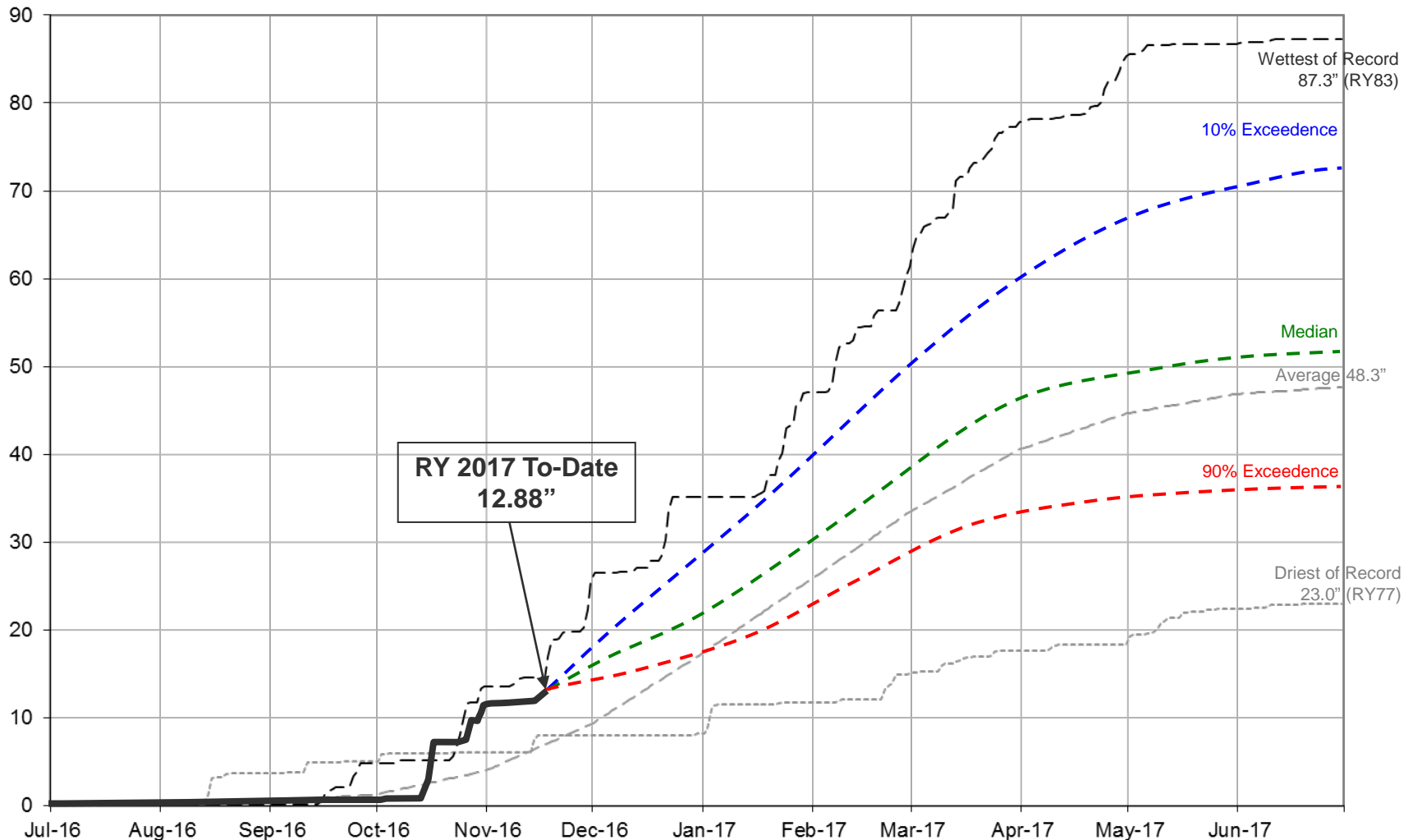


Water Supply Projections

Mokelumne Precipitation Rainfall Year 2017



Mokelumne 4-Station Average Precipitation (in)
Rainfall Year 2017 Projection

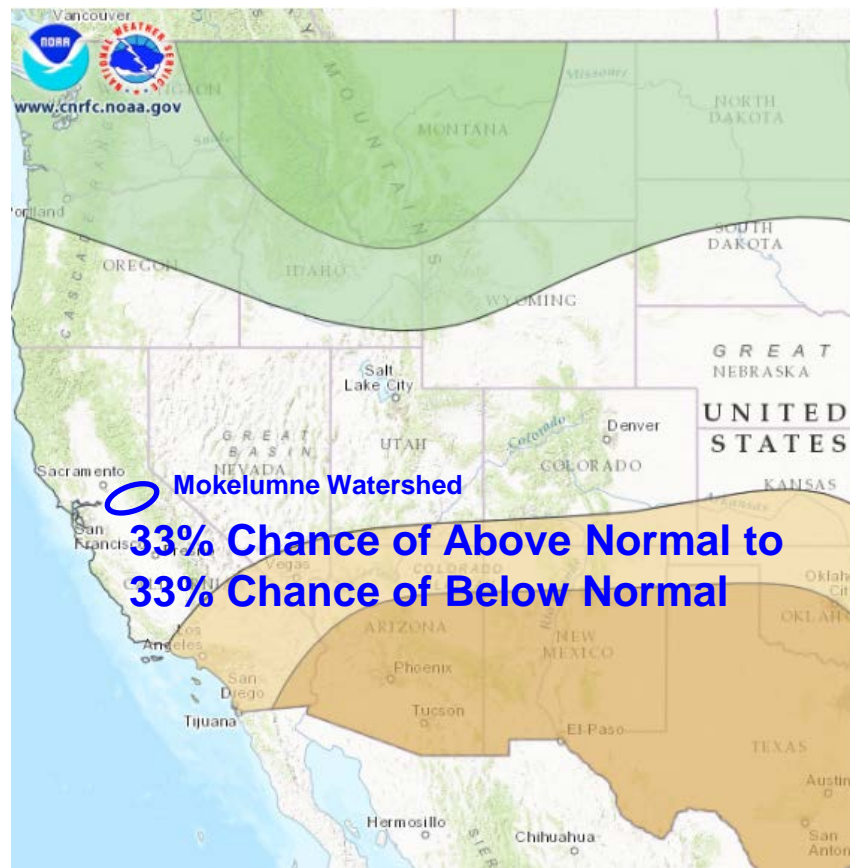


Water Supply Projections

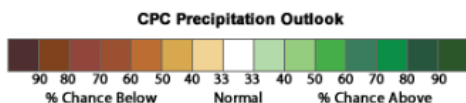
Regional Forecasts for Jan 2017 through Mar 2017



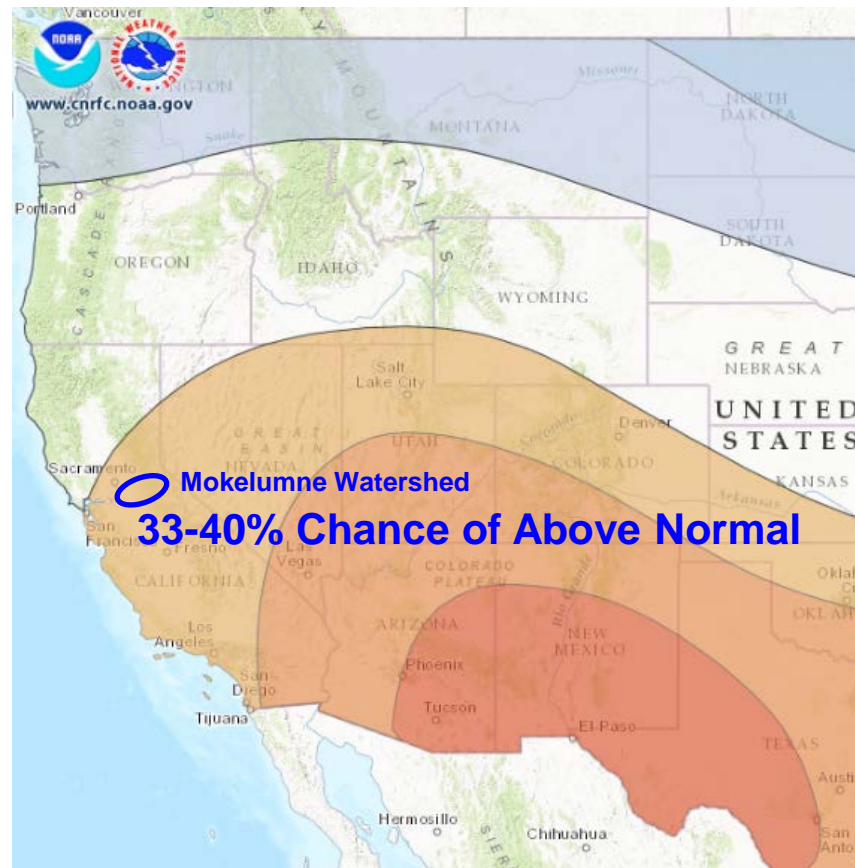
Precipitation



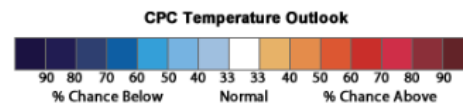
Monthly Precipitation Forecast Created: 11/17/2016 Valid: JFM 2017



Temperature



Monthly Temperature Forecast Created: 11/17/2016 Valid: JFM 2017



Hoping for continued snow!



WATER SUPPLY ENGINEERING DAILY REPORT

Monday, November 21, 2016

RESERVOIR STORAGE AND ELEVATION

	<u>WATER SURFACE</u>		<u>STORAGE</u>		<u>MAXIMUM CAPACITY</u>		Release	Spill
	Elevation	+Gain		+Gain	Elevation	Storage		
	Feet	-Loss	Ac-Ft	-Loss	Feet	Ac-Ft	Cfs	Cfs
<u>MOKELUMNE</u>								
Pardee	562.26	-0.07	192000	-150	567.65	203795	519	0
Camanche	215.66	-0.02	281190	-120	235.5	417120	557	0
<u>EAST BAY</u>								
Briones	573.9	-0.01	57400	0	576.14	58960	0	0
Chabot	220.3	0	8130	0	227.25	10350	0	0
Lafayette	442.48	0	3440	0	449.16	4250	0	0
San Pablo	308.85	0.04	34690	30	313.68	38600	0	0
Upper San Leandro	452.09	-0.16	33140	-110	459.98	38905	0	0
Total East Bay Res.			136800	-80		151065		
TOTAL SYSTEM STORAGE			609990	-350		771980		

<u>DISTRIBUTION SYSTEM</u>			<u>MOKELUMNE SYSTEM</u>		
<u>DISTRIBUTION RESERVOIRS</u>			<u>AQUEDUCT DELIVERIES</u>		
	Storage	Operating		MG	Flow Conditions
	MG	Capacity			
Today	355	720	Line 1	13.4	THROTTLE
Total Previous Day	371		Line 2	0	SHUTDOWN
Total Change	-16		Line 3	49.8	THROTTLE
			TOTAL	63.2	98 Cfs
<u>WATER PRODUCTION</u>	Million	Capacity	<u>FSCC to MOK AQUEDUCTS (Measured at Brandt), MG</u>		
<u>AND DEMAND</u>	Gallons	MGD	Mok 1	0	
Lafayette WTP	7.6	25	Mok 2	0	
Orinda WTP	0	190		0 MG	
San Pablo WTP	15	30	<u>RIVER FLOWS AND RELEASES</u>		
Sobrante WTP	23.5	50			Cfs
Upper San Leandro WTP	36.2	45	Mokelumne River Natural Flow		318
Walnut Creek WTP	37.6	90	Pardee Reservoir Inflow		532
			Pardee Release to Camanche Res.		519
<u>TOTAL SURFACE PRODUCTION</u>	119.9	430	Pardee Release to JVID		0
Miscellaneous(Estimated)	0		Camanche Release to Mokel. River		557
<u>TOTAL WATER PRODUCTION</u>	119.9				
Change in Distribution System	-16		<u>PG&E CO. STORAGE (Acre-feet)</u>		
Wash Water from Distribution Sys.	1.6				Maximum
<u>SYSTEM DEMAND</u>	134.6			<u>Storage</u>	<u>Change</u>
East-of-Hills Demand	32		Old Reservoirs	8565	-199
West-of-Hills Demand	102.6		Salt Springs Res.	75698	-192
			Lower Bear Res.	25440	-34
			Total	109703	-425
					220442

<u>RAW WATER TRANSMISSION</u>			<u>PRECIPITATION (Inches)</u>				
	<u>INPUT</u>	<u>DRAFT</u>	<u>THIS YEAR</u>		<u>AVERAGE YEAR</u>		
			<u>STATION</u>	<u>Today</u>	<u>This Month</u>	<u>Season to-Date</u>	<u>Season to-Date</u>
Briones Res.	0	0	USL WTP	0.01	0.77	5.99	4.15
San Pablo Res.	55	123	Orinda WTP	0	1.34	6.53	4.74
U. San Leandro Res.	0	119	Lafayette Reservoir	0.01	0.73	4.66	4.07
			Walnut Creek WTP	0.01	0.88	4.95	3.28
<u>TOTAL</u>	55	242	Camp Pardee	0.14	1.5	5.81	3.33
<u>REMARKS</u>			Salt Springs P.H.	0.3	1.14	10.75	7.36
WID Canal Diversion = 42 cfs			<u>CAPLES LAKE (7,830 FT) DATA</u>				
Mokelumne River below WID = 241 cfs				<u>Today</u>	<u>Average</u>		
PG&E data as of 4:00 pm previous date.			Snow Depth	9 Inches	9 Inches		
All other data as of midnight.			Water Content	0.7 Inches	2.0 Inches		
WTP capacities are sustainable rates.							

EAST BAY MUNICIPAL UTILITY DISTRICT