

Renewable Energy Update

January 9, 2018

Sustainability/Energy Committee

- Renewable Energy Self-Generation Bill Credit Transfer Tariff (RES-BCT) overview
- Proposed project sites for 5 MW PV
- Project approach
- Next Steps

RES-BCT Tariff



- Available to local governments and special districts
- Renewable generation- PV, wind or hydroelectric
- Maximum size of 5 MW
- Limited opportunity:
Program cap of 105 MW
- Maximum of 50 benefitting accounts
 - Located with the “Geographical Boundary”



RES-BCT Cap Status



RES-BCT Program Status	Project Capacity*
Projects complete and admitted into RES-BCT	18 MW
Projects in the IC process	48 MW**
Unassigned Capacity	39 MW
RES-BCT Program Cap	105 MW

* PG&E published data as of January 8, 2018.

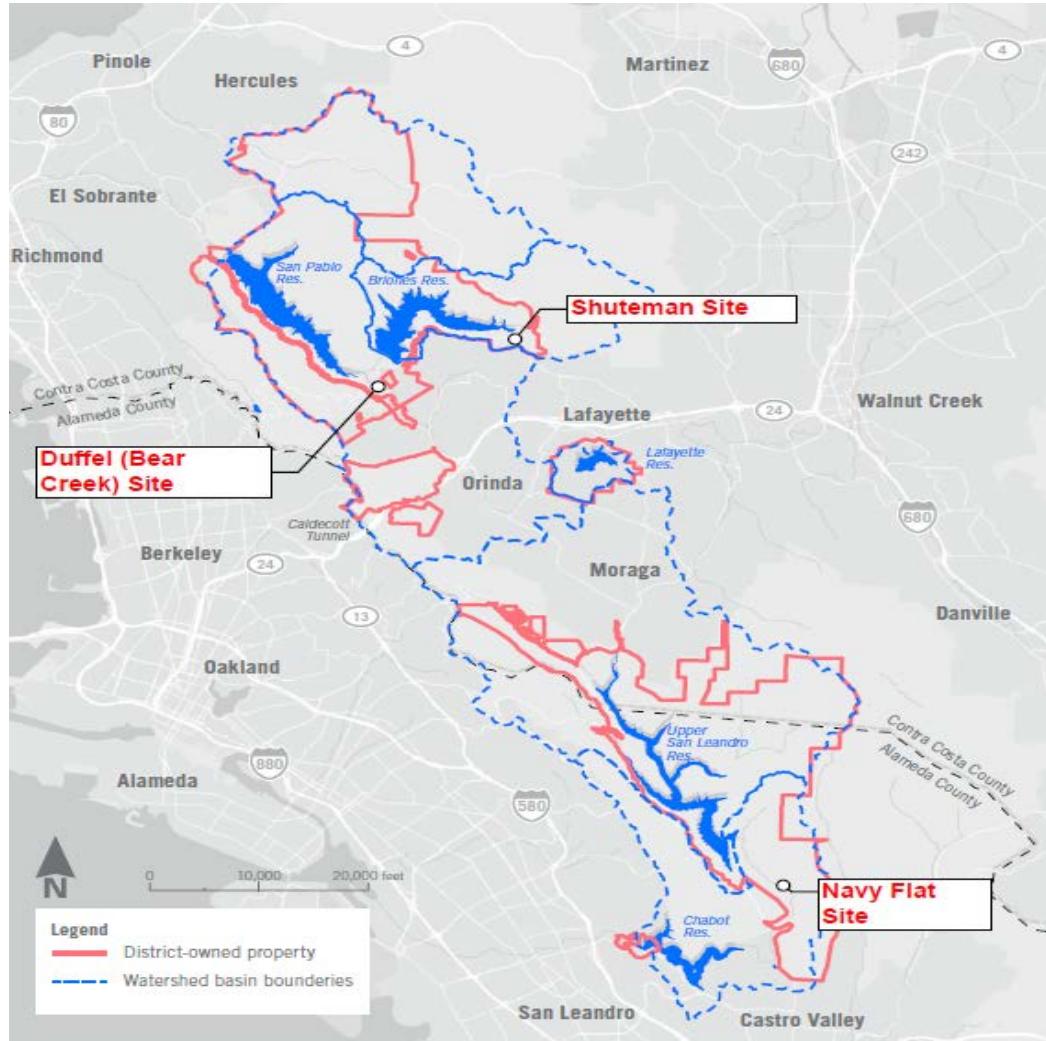
**Includes the two of the District's three PV projects included (10 MW)

Initial Project Investigation



- Identified eleven potential sites
- Two watershed property sites selected
- Third watershed site added, Navy Flat
 - Greater interconnection (IC) costs
 - Less visual impact
- Similar environmental concerns
 - Alameda Whipsnake
 - Red-Legged Frog

Potential Sites



Development Approach



- Power Purchase Agreement
 - Provides a better economic return
 - Accelerates project Implementation
 - Purchase options available after ~6 years
- Up front development costs
 - CEQA & permitting
 - PG&E IC deposits and fees

Next Steps



- Issue RFP for CEQA work, Jan 2018
- CEQA contract approval, March 2018
- PG&E IC study complete, July 2018
- Select preferred site, August 2018
- Solicit PPA proposals, September 2018
- Construction, 2020

QUESTIONS



?

Integrated Pest Management (IPM) Program Update

Sustainability/Energy Committee

January 9, 2018

Agenda



- IPM Program review
- Third party review
- Recommendations
- Next Steps

What is IPM?



- Comprehensive, systems-based process
- Select appropriate control method
 - Biological controls
 - Physical actions
 - Cultural practices
 - Chemical application
- Based on pest and site conditions
- Minimize impacts to humans, environment, non-target organisms

Types of District Property



- East Bay facilities
 - Administrative facilities
 - Operating facilities
- Aqueduct rights-of-way
 - About 100 miles long, 1000 feet wide
- Watersheds
 - East Bay: 29,000 acres
 - Upcountry: 29,000 acres

Pest Management Objectives



- Employee and public safety/security
- Regulatory drivers
 - Division of Safety of Dams
 - Fuel management/fire access
- Flood control/drainage
- Infrastructure management/protection
- Habitat management
- Aesthetics

Third Party Review



- Blankinship and Associates
- Experience with IPM, plant science, water quality, environmental toxicology, biology, and environmental planning
- Active in:
 - California Association of Pest Control Advisors
 - California Weed Science Society
 - Pesticide Applicators Professional Association
 - California Invasive Plant Council

Third Party Review Process



- Workshops
- Survey (35 employees)
- Interviews (14 employees)
- Field observations
- Review policy and practice documents from similar agencies

- Knowledgeable staff and good foundation in IPM
- Recommendations for improvement
 - Enhanced training
 - Enhanced communication
 - Pest Control Advisors, biologists, public
 - Consistent records management
 - Standardize qualifications, decisions, and activities

Enhance Training



- Standardize Pest Management training
 - District's IPM program
 - Laws and regulations
 - Communication and outreach
 - Record keeping
 - Worker protection
 - Best management practices
- Forum for sharing challenges/successes

Enhance Communication



- Require Pest Control Advisors to make site visits and interview staff prior to recommendation
- Involve District biologists more in the pest management process
- Improve communication with the public

- Decision process document
 - Describes goals, pests, monitoring, control methods, etc.
 - Piloted 4 facilities in East Bay
- Electronic data collection
 - Record pest management activity
 - Regulatory reporting and data analysis

Standardized Qualifications



- Pesticide applicators must have a Qualified Applicator Certificate or be supervised by one
- Develop written Standard Operating Procedures

Next Steps



- Reinitiate annual District IPM workshop in January 2018
- Implement data management tool by June 2018
- Complete decision documents for East Bay facilities by December 2018
- Incorporate recommendations into IPM program
- Enhance and standardize staff training

Questions



2015 Pesticide Application



Property Type	Application Events (number)	Volume (oz)	Volume/acre (oz/acre)
Watershed (Upcountry) 28,000 acres	75	6690	0.24
Watershed (East Bay) 28,000 acres	33	1073	0.04
Aqueduct 126 miles (1527 acres)	101	60,842	39
Facilities ~300 sites (~800 acres)	318	20,073	25