

Public Safety Power Shutoff Event

Board of Directors

October 8, 2019

Weather Conditions



- Red Flag conditions including East Bay Range and Diablo Hills
 - October 9, 5 AM to October 10, 5 PM
- High wind
- Low humidity

RED FLAG WARNING

North Bay Mountains & Valleys, East Bay Hills & East Bay Valleys
Wednesday 5 AM PDT to Thursday 5 PM PDT

Santa Cruz Mountains
Wednesday 5 PM PDT to Thurs Noon PDT

Gusty north to northeast winds:
• Mountains: 20-30 mph, gusts 45-55 mph (locally higher)
• Valleys: Gusts to 30 mph

• Extreme fire danger
• Gusty and potentially strong, damaging north to northeast winds
• Low relative humidity

WIND ADVISORY

Location...
North and East Bay Hills above 1000 feet.

Timing...
6 AM Wednesday to 3 PM Thursday.
Peak winds Wednesday Night.

Winds...
North to Northeast winds 20-30 mph with gusts 45-55 mph. Locally higher gusts possible on Wednesday night.

Impacts... Critical fire weather conditions. Possible downed trees and powerlines.

Timeline



- PG&E zones listed as “Elevated” potential last week
- Monday, October 8
 - PG&E increased to “PSPS Watch” over the weekend
 - PG&E activated EOC
 - PG&E conference calls began
 - District activated Emergency Operations Team
- Tuesday, October 9
 - Coordination with PG&E
 - Continued EOT activities

Potential PG&E PSPS Event



- PSPS may start Wednesday, October 9 and last up to 5 days
- Potential Impacts
 - 29 counties
 - >600K PG&E customers
 - ~35K District customers
- Alameda County
 - Berkeley, Hayward, Castro Valley, Oakland, and San Leandro
- Contra Costa County
 - Albany, El Cerrito, El Sobrante, Kensington, Lafayette, Moraga, Orinda, Pinole, Pleasant Hill, Richmond, Rodeo, San Pablo, San Ramon, and Walnut Creek


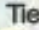
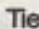
District Facilities Affected

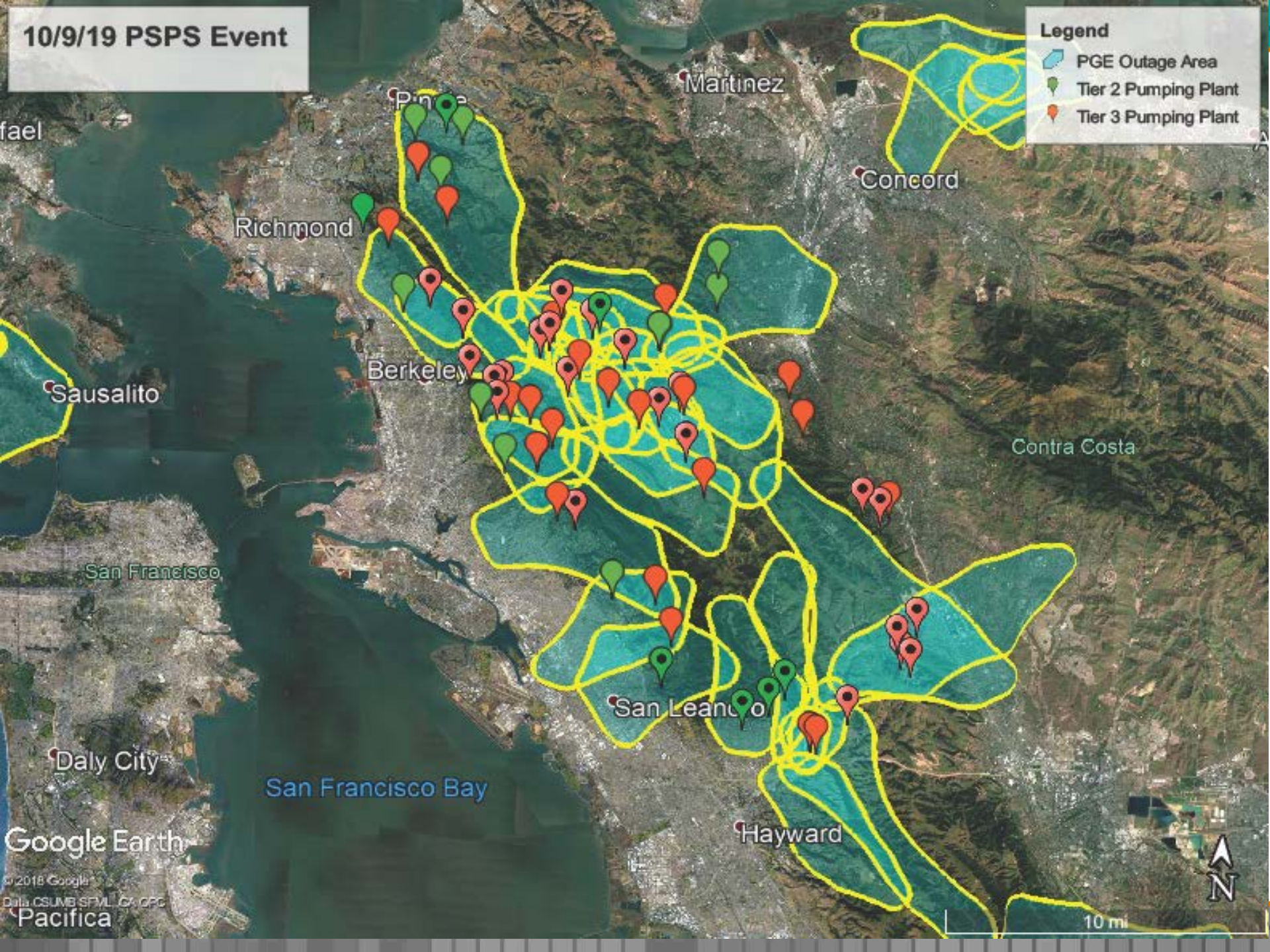


- 133 Facilities
 - 47 Pumping plants
 - 37 Distribution reservoirs
 - 2 Water treatment plants
 - Other facilities
- No wastewater facilities

10/9/19 PSPS Event

Legend

-  PGE Outage Area
-  Tier 2 Pumping Plant
-  Tier 3 Pumping Plant



Response Actions



- Maximizing storage in distribution reservoirs
- Connecting generators
- Verifying fuel availability
- Participating in PG&E and County EOC meetings
- Coordination with PG&E
- PSPS communications

PSPS Emergency Communications



Notifications

- All employee message
- Emails to local electeds, city/county officials and stakeholders
- Targeted WaterSmart emails to customers in areas where operations may be affected
- Social media (Twitter, Facebook and Nextdoor)
- Media advisory



East Bay Municipal Utility District
Published by Pio Ebmud 175 · 1 min ·

Are you ready for potential power shutoffs by PG&E? EBMUD has prepared by topping off reservoirs and ensuring our backup equipment is ready to go to keep water flowing. Learn more on how #PSPS may affect water operations. <http://ebmud.com/pssp>



EBMUD.COM

East Bay Municipal Utility District :: Public Safety Power Shutoff (PSPS)



Dear April,

Due to extreme fire danger, PG&E has announced it is planning to shut down power to parts of East Bay Municipal Utility District's service area beginning Wed, October 9. Your neighborhood is included in the affected areas.

East Bay Municipal Utility District (EBMUD) has topped off reservoirs and is ensuring backup equipment is ready. EBMUD asks that customers in affected areas to reduce water use indoors and turn off outdoor irrigation. This will help to conserve water in our local reservoir tanks.

EBMUD also recommends customers prepare emergency water supplies: two gallons per person per day, plus pets. More information on how to store emergency water is available at: ebmud.com/customers/pipeline/2019/10/storing-emergency-water/.

PSPS Emergency Communications



- Website with map where water operations may be affected
ebmud.com/PSPS2019
 - Customers enter address to determine need for conservation
- Interagency collaboration
 - Providing County PIO updates and sharing messaging with peer water agencies

A screenshot of the EBMUD website's emergency communication page. The page has a yellow header with the text "Power shutoff impacts to water operations". Below the header, there is a breadcrumb trail: "Home / Customers / Alerts and outages / Power shutoff impacts to water operations". A sub-header reads: "Below is important information about power shutoff impacts to water operations during the October 2019 Public Safety Power Shutoff event in the East Bay." The main content area contains a warning: "You may be asked to conserve water so EBMUD can maintain water in local reservoir tanks. If you are located within a highlighted area, EBMUD asks that you be prepared to limit water use indoors and turn off outdoor irrigation." A legend indicates that yellow shading represents "Warning PSPS Initiated" and a dashed line represents "EBMUD boundary". Below the text, there is a search bar and a map titled "EBMUD Incident Areas". The map shows several yellow-shaded areas in the East Bay region, including Berkeley, Oakland, and parts of Alameda and Contra Costa counties. The map interface includes a search bar, zoom controls, and a scale bar.

Questions

