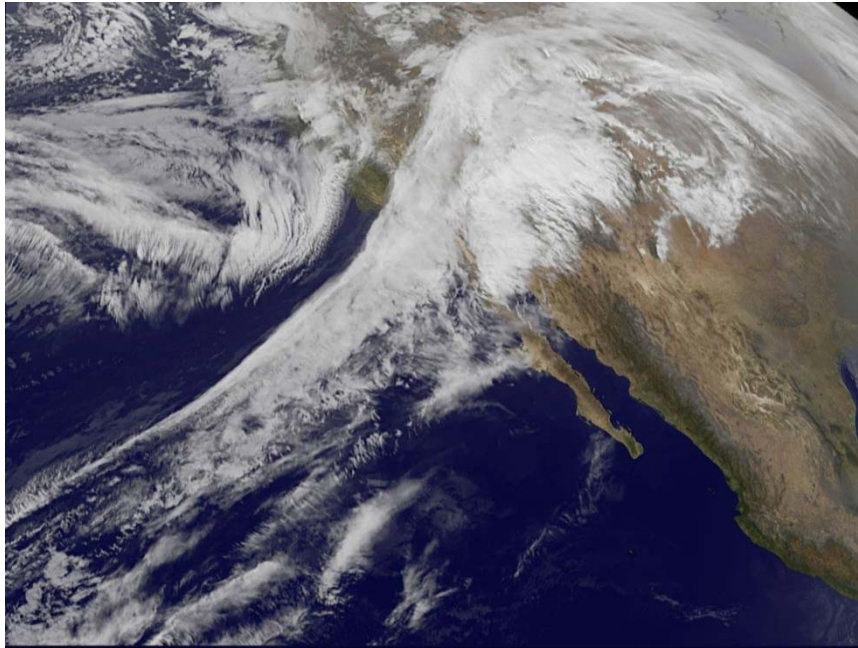


# **Wet Weather Facilities Charge on 2021-2022 Property Tax Rolls**

Board of Directors

July 13, 2021

# What Happens When It Rains?

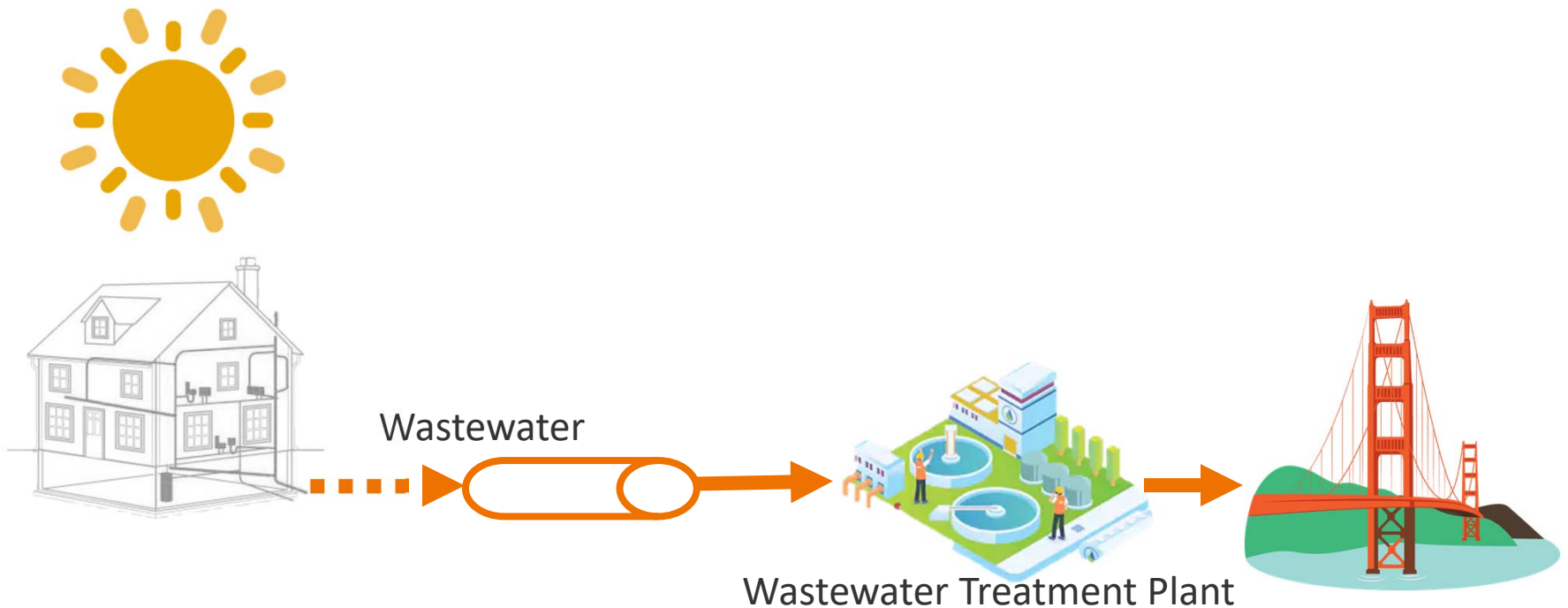




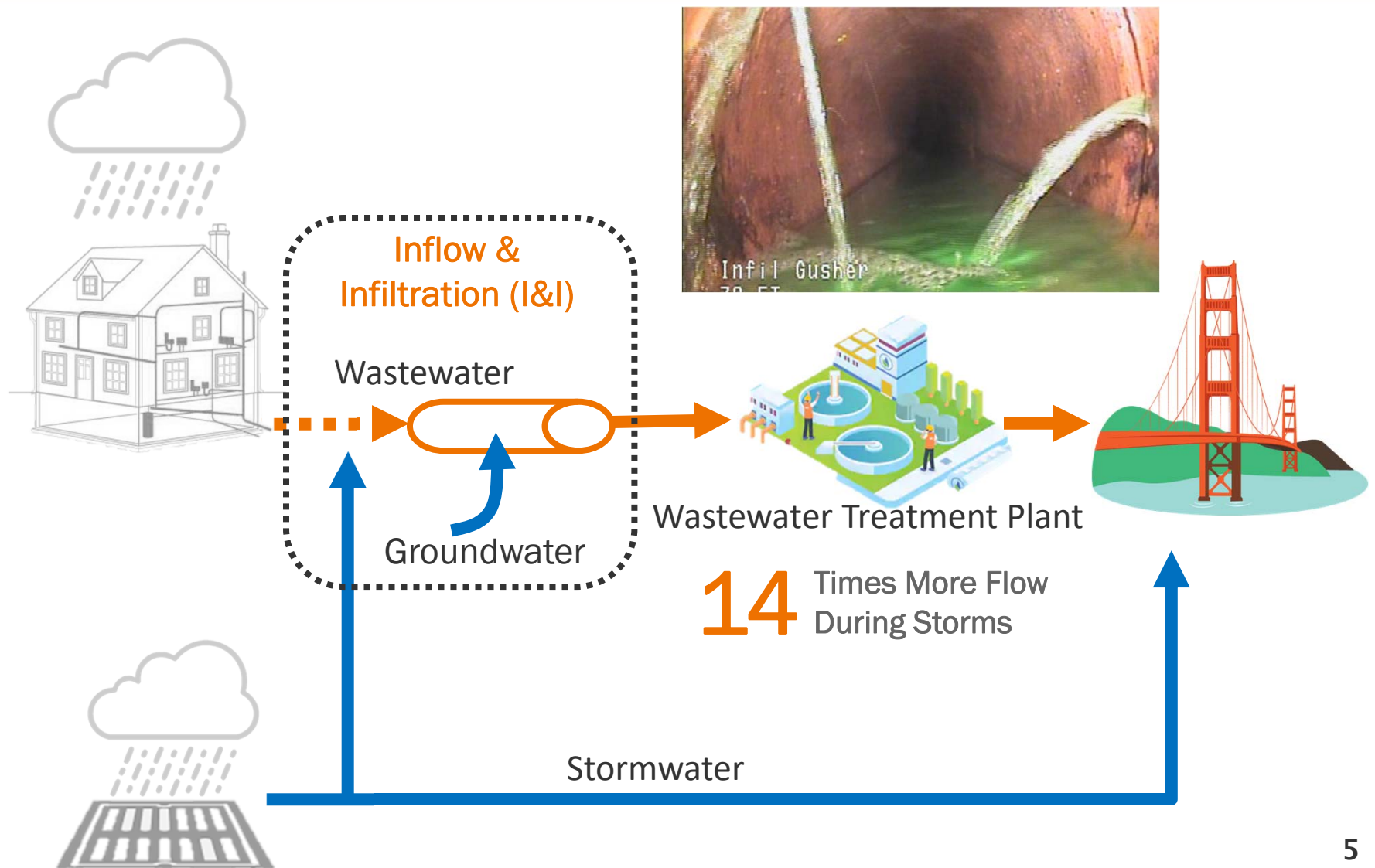
# Wastewater Collection System



# Dry Weather Wastewater Treatment



# Wet Weather Wastewater Treatment





# Inflow & Infiltration Facilities



## BY THE NUMBERS

**3** Wet Weather Facilities

**37** Miles of Pipeline

**15** Pump Stations

**11** Million Gallon Storage Basin

**9** Diversion & Overflow Structures

**9** Level Monitoring Stations

# Wet Weather Facilities Charge



- Wet Weather Facilities Charge (WWFC) funds capital expenses for I&I facilities
- Authorized under State Health & Safety Code (H&SC) to collect charges on property tax roll
- H&SC augments District's powers under the Municipal Utility District Act

## BY THE NUMBERS

---

Collected Since **1987**

---

**\$29.3** Million for 2021-2022

---

**20%** Of Total Revenue For Wastewater

---

**176** Thousand Properties

---

# Property Size



- Properties with larger lots receive more rain, leading to more I&I into the collection system
- Accordingly, WWFC uses bin system

Lot Size (Square Feet)	WWFC	
	FY22	FY23
0 - 5,000	\$120.34	\$125.16
5,001-10,000	\$187.98	\$195.50
>10,000	\$429.62	\$446.80



# Procedural Requirements



- 1 Prepare and file written report (Report) each year with the Secretary of the District.

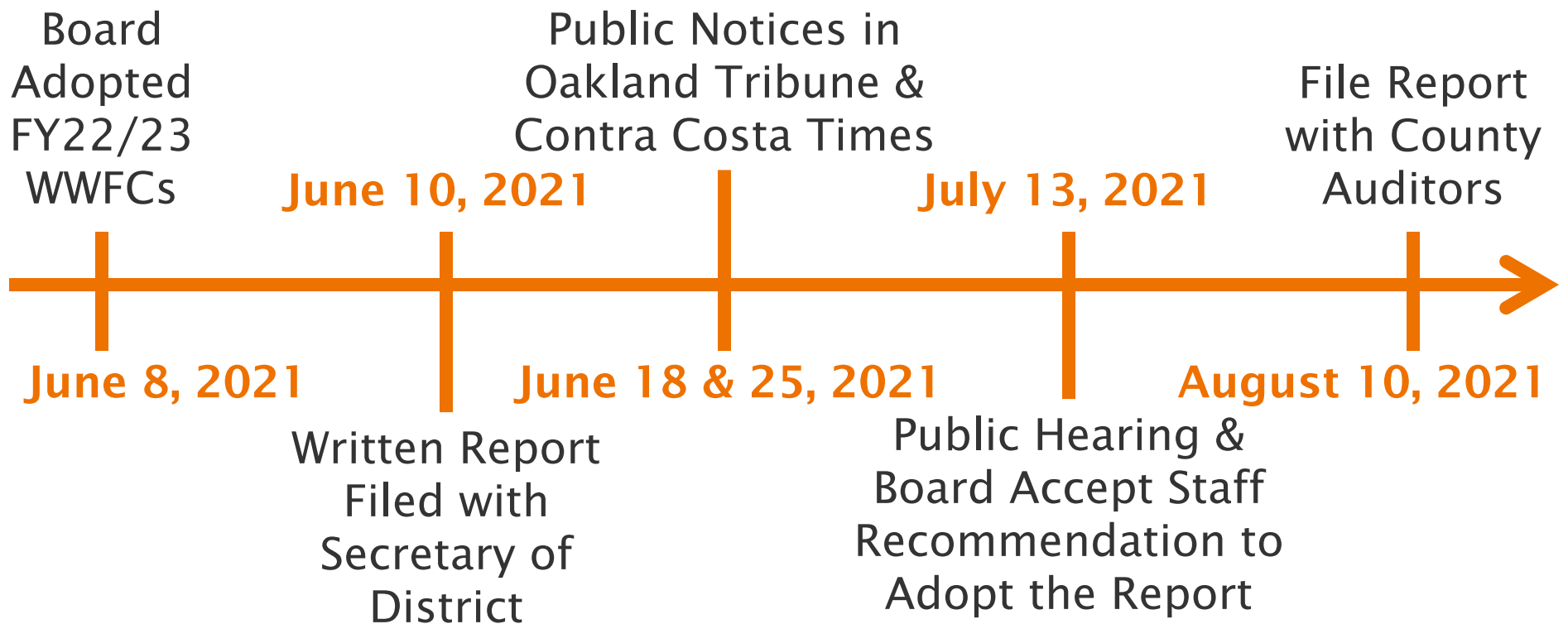
---
- 2 Publish a notice of the filing of the Report and of the public hearing in a newspaper of general circulation (once a week for two weeks).

---
- 3 Hold public hearing to consider protests to the Report and to determine if there is a majority protest.

---
- 4 If there is no majority protest, the Board must approve the Report and approve collecting the WWFC on the property tax rolls, both with a two-thirds vote (five Directors).

---
- 5 File the approved Report with county auditors on or before August 10.

# Timeline

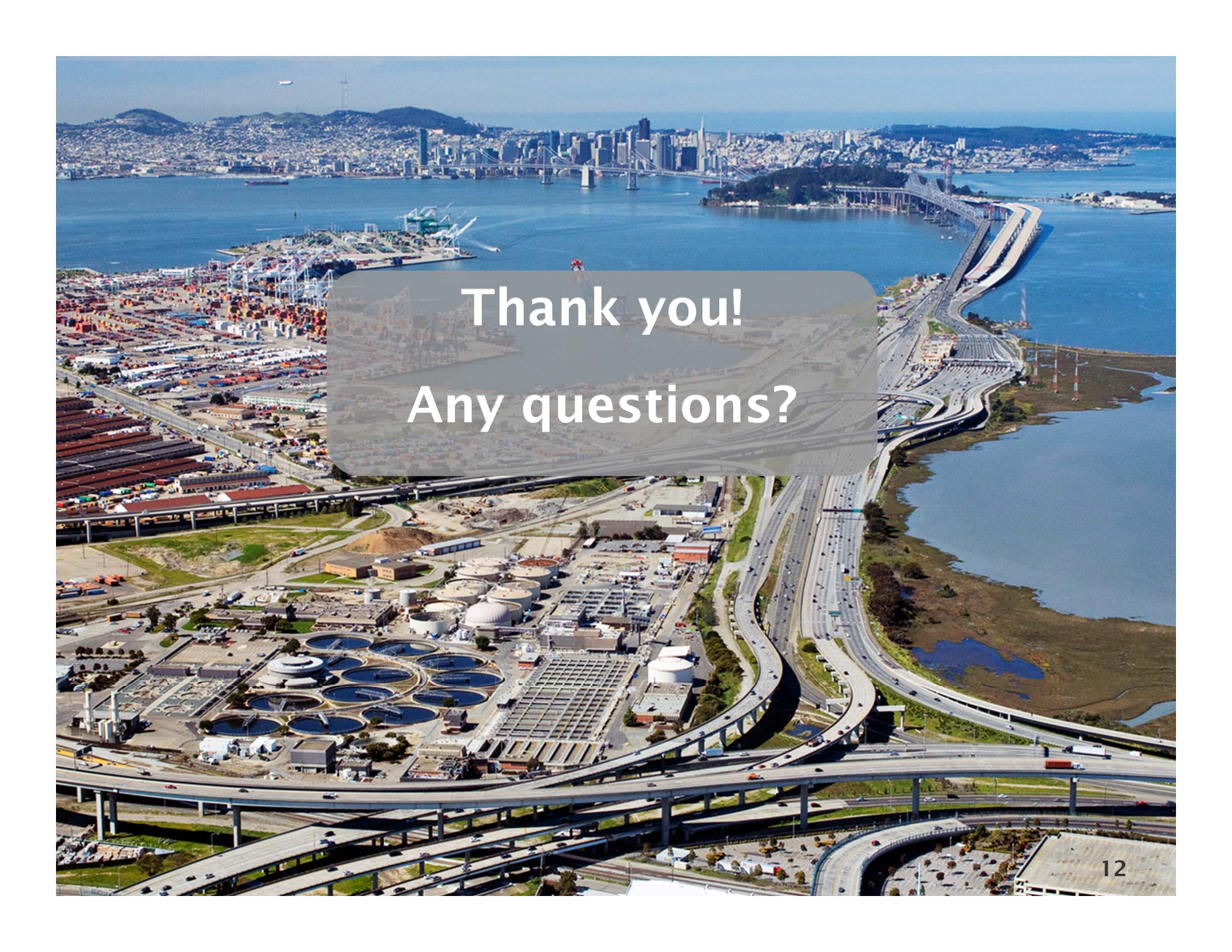


# Staff Recommendation



- Adopt the Report by at least two-thirds of the members of the Board (i.e., five Board members).
- Authorize the District to collect the Fiscal Year 2022 WWFC on the property tax rolls of Alameda and Contra Costa Counties.
- Authorize District staff to adjust the Fiscal Year 2022 WWFC for any affected parcels as new information is provided by the Counties.
- Direct the Secretary of the District to file a copy of the Report with the Alameda County Auditor and the Contra Costa County Auditor.



An aerial photograph of the San Francisco-Oakland Bay Bridge, showing its approach and the city skyline in the background. In the foreground, there is a large industrial facility with several circular tanks and a complex highway interchange. The text "Thank you! Any questions?" is overlaid in a semi-transparent box.

Thank you!  
Any questions?





*EAST BAY MUNICIPAL UTILITY DISTRICT*

# **Drought Update**

Board of Directors

July 13, 2021

# Water Supply Projections



- District's End of September Storage projection remains at 425 TAF under median conditions
- California Department of Water Resources Bulletin 120 forecast for total runoff 219 TAF under median conditions



# EBMUD CVP Allocation Update



- CVP allocation 33,250 AF (25% of contract)
- Freeport diversions will begin on September 15, 2021



# EBMUD Drought Plan



- Designed to address multi-year drought
- Combines supplemental supply and demand management
- Actions escalate as conditions worsen
- Lessons learned from previous events
- Made major investments in drought infrastructure

- Some customers may notice a different taste when Sacramento River water is introduced.
- Increased threat of algae blooms in dry years
- Invested \$49M to address taste and odor issues (ozone at USL and Sobrante)
- Water is safe to drink



# Taste and Odor Impacts



- Algal blooms are more common during drought and cause changes in taste and odor.
- Proactive communications:
  - Investigate and respond to customer complaints
  - Advise customers of changes using website and social media (e.g. Twitter, Nextdoor)
- Operational changes: include increasing ozone.

# Taste and Odor Impacts



Next steps:

- Develop thresholds to utilize various communication tools.
- Continue emails to customers (industrial/commercial/manufacturing) to notify of changes in water.
- Continue to update the website.

# Make Every Drop Count



## Digital and print ad campaign

- 5-minute shower song recommendations
- Web and social media ads
- Print ads (multi-lingual) later this summer
- Clear Channel – two digital billboards and transit shelters August - September



# New Super Rebate Pilot Program



- Enhancement to existing lawn rebate program
- \$1.50/square foot of lawn replaced
- Provides incentive for more sustainable projects
  - Native plants
  - Sheet mulching
  - Compost
  - Planting in the cool season

# Social Media and Media Outreach



- Post to promote new Super Rebate reached over 1,000 people in the first 24 hours.
- 63 drought interviews with local media in 2021



# Community Outreach



Water Wednesday Series

## DROUGHT, WATER YOU GOING TO DO ABOUT IT?

Find out how you can meet the East Bay's drought challenge!

July 21 - 6 pm - Zoom



**CHARLES BOHLIG**

Water Conservation  
Supervisor



**ALICE TOWEY**

Water Conservation  
Manager



**WHITNEY RAY**

Water Conservation  
Supervisor



# Questions





# Coronavirus Update

Board of Directors

July 13, 2021

# State Regulations and Guidance



- No change to state/county regulations and guidelines
- Many safety protocols rescinded in June related to occupancy limits, social distancing, carpooling, mask wearing (with exceptions), and travel restrictions
- Other protocols remain: COVID-19 prevention plan, regular cleaning/disinfection, and symptom self-checks
- State Emergency Declaration and many Executive Orders remain in effect

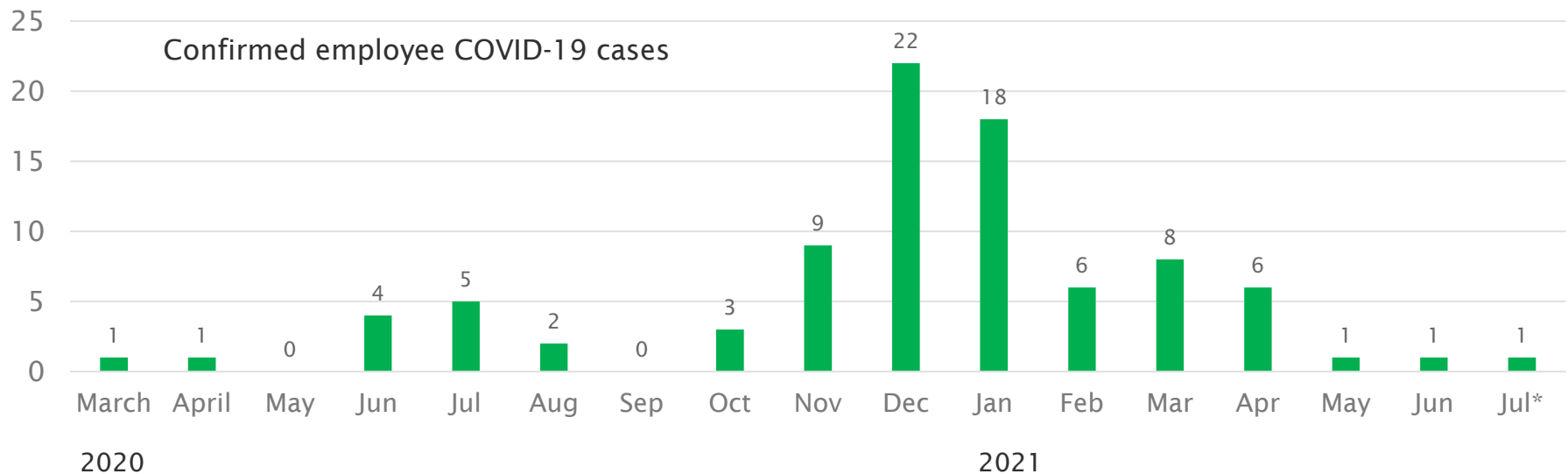
# Employee Impacts from COVID-19



88 employee and 14 contractor positives to date

- 1 employee isolating with COVID-19
- 6 employees off work (quarantining or recovering from vaccine)

COVID-19 leave available through Sept. 30



\* through July 9

# Vaccination Update



	Fully Vaccinated	At Least Partially Vaccinated
District	69%	NA
Alameda County	69%	82%
Contra Costa County	73%	79%

- District figures based on documentation received
- District will continue to educate employees on the benefits of vaccination and facilitate vaccination
- Requesting mobile vaccination units from Contra Costa County for work sites in that county



# Safe Return to Workplace Plan Employees



- Fully telecommuting employees began returning to District worksites one to two days/week on June 21
- Incrementally increase building occupancy and continue to limit public access
  - Occupancy of the Main Administration Building now ranges between 20-25%
- Employees with childcare issues related to pandemic, or medical issues, can discuss alternatives with supervisor and HR
- Consistent with long-term telecommuting plan

# Safe Return to Workplace Plan

## Board of Directors



- Language in Executive Order N-29-20 was replaced by Executive Order N-08-21 and is in effect until Sept. 30, 2021
- In-person attendance of Board members during interim is voluntary
- Board room closed to the public until Sept. 30, 2021
- Instructions for public participation will be updated prior to Sept. 30, 2021

# Questions

