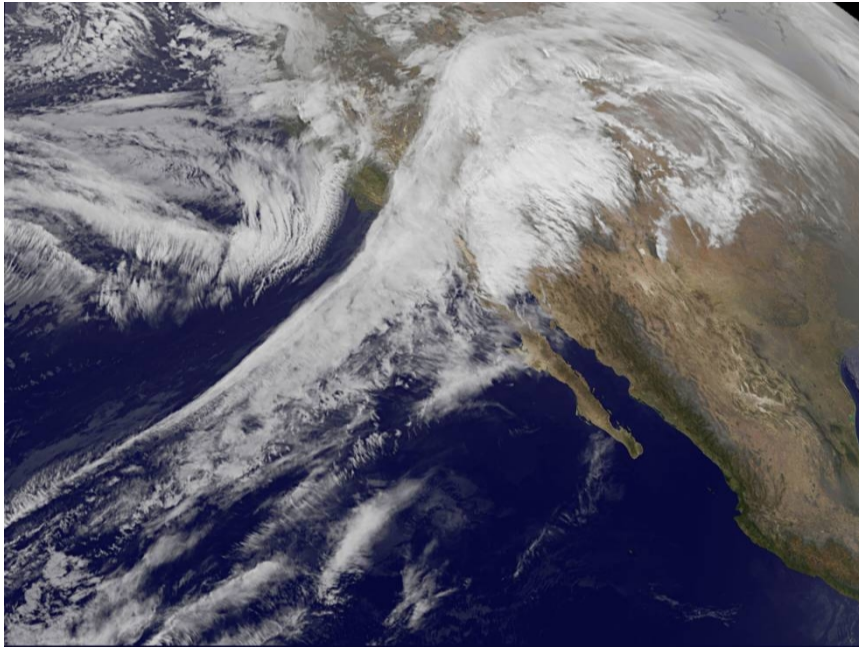


# **Wet Weather Facilities Charge on 2021-2022 Property Tax Rolls**

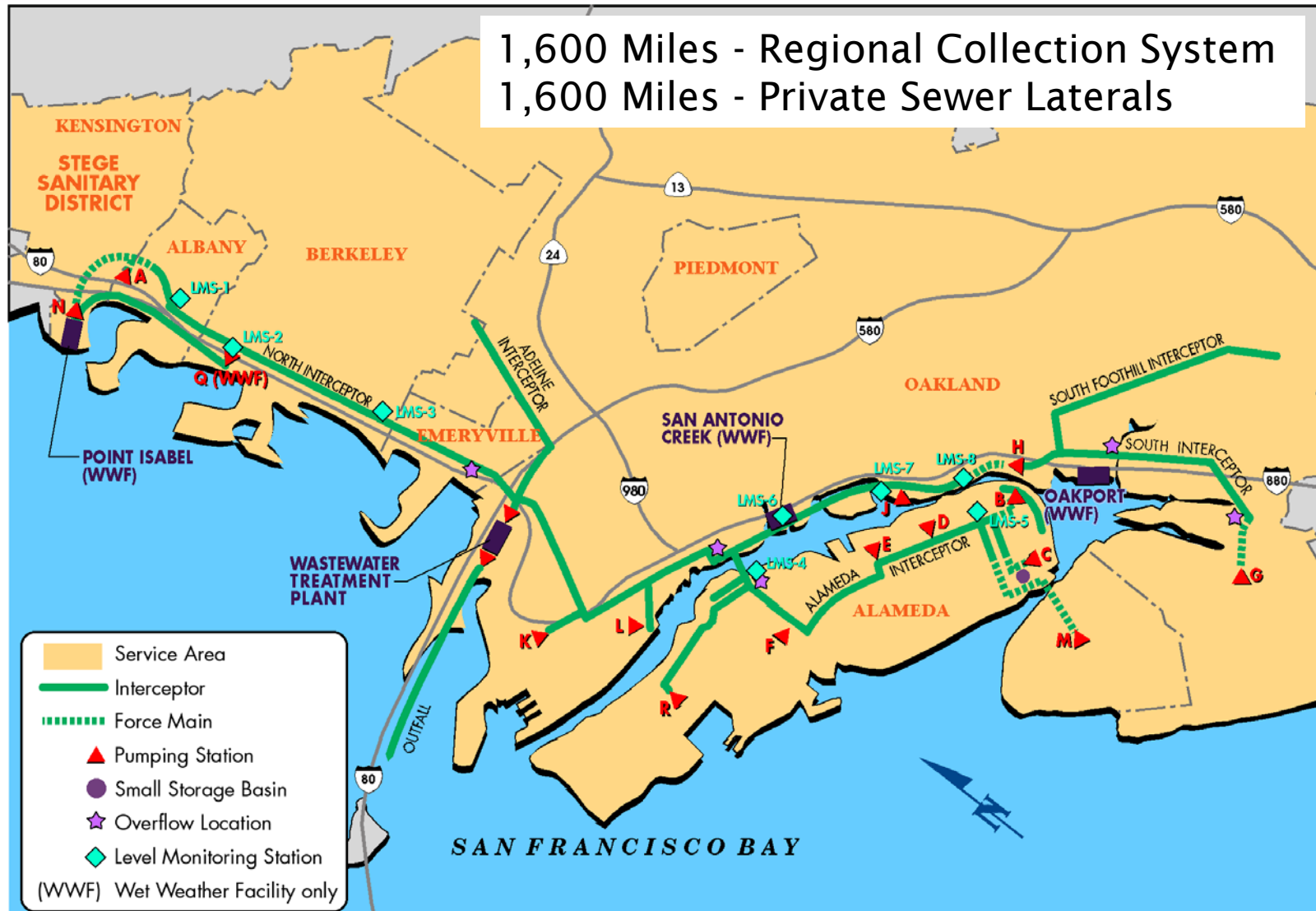
**Board of Directors**

**July 13, 2021**

# What Happens When It Rains?

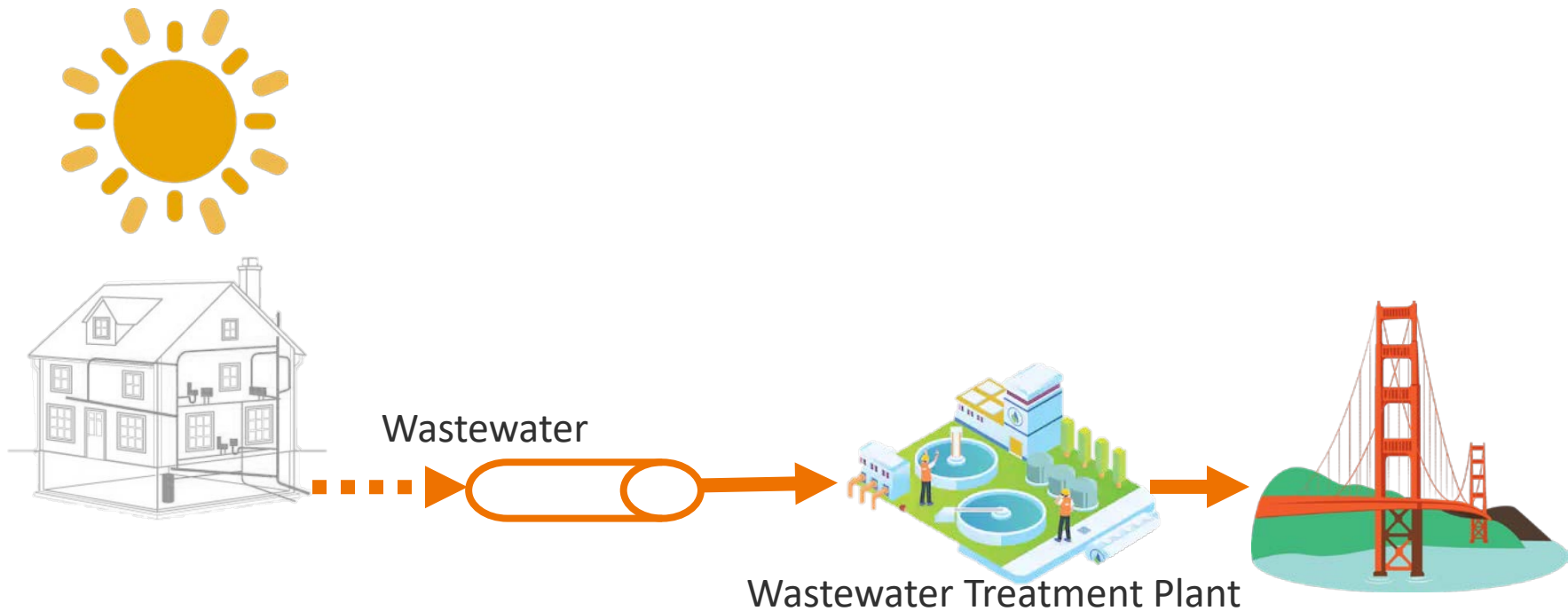


# Wastewater Collection System

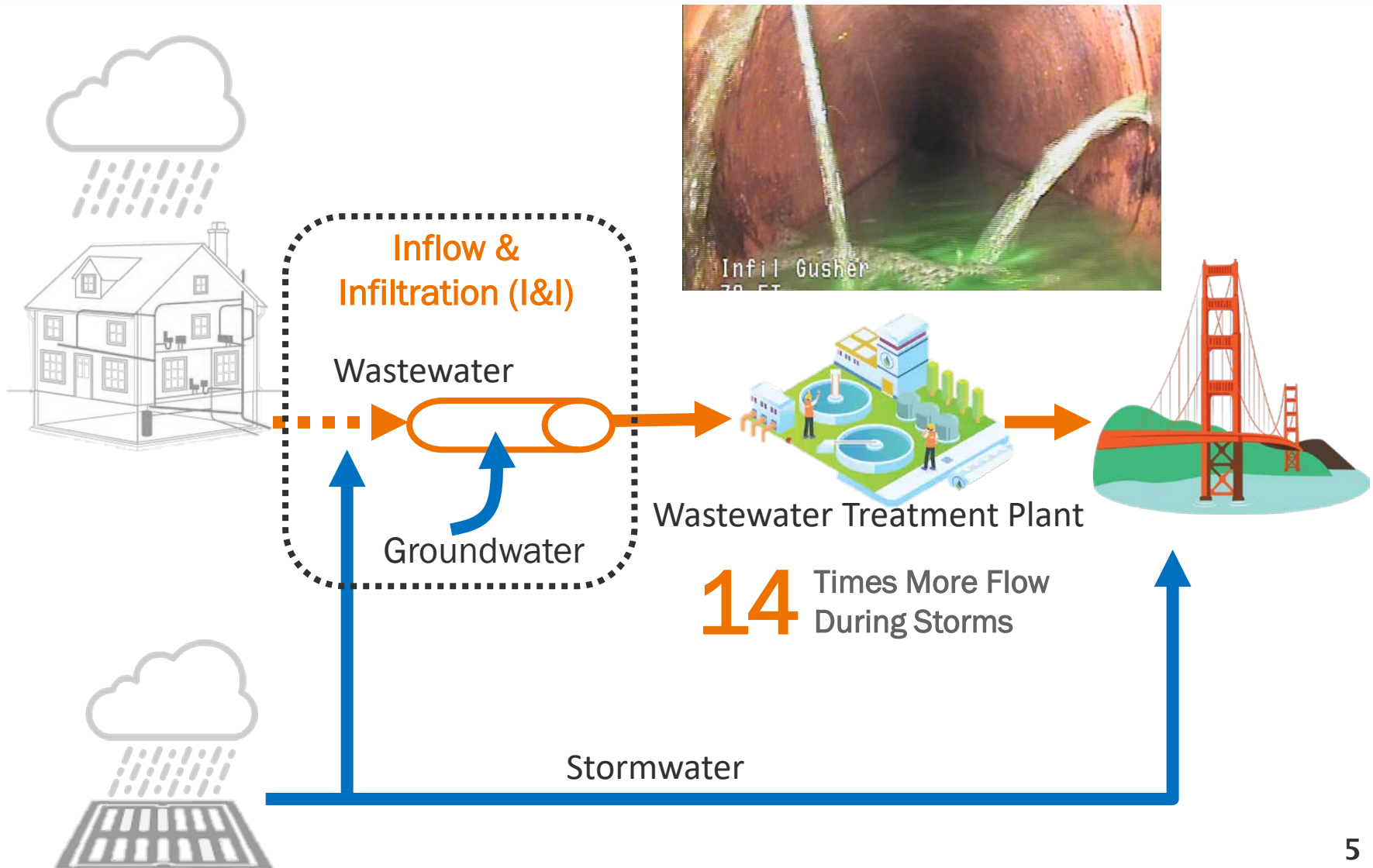




# Dry Weather Wastewater Treatment



# Wet Weather Wastewater Treatment



# Inflow & Infiltration Facilities



## BY THE NUMBERS

**3** Wet Weather Facilities

**37** Miles of Pipeline

**15** Pump Stations

**11** Million Gallon Storage Basin

**9** Diversion & Overflow Structures

**9** Level Monitoring Stations



# Wet Weather Facilities Charge



- Wet Weather Facilities Charge (WWFC) funds capital expenses for I&I facilities
- Authorized under State Health & Safety Code (H&SC) to collect charges on property tax roll
- H&SC augments District's powers under the Municipal Utility District Act

## BY THE NUMBERS

---

Collected Since **1987**

---

**\$29.3** Million for 2021-2022

---

**20%** Of Total Revenue For Wastewater

---

**176** Thousand Properties

# Property Size



- Properties with larger lots receive more rain, leading to more I&I into the collection system
- Accordingly, WWFC uses bin system

Lot Size (Square Feet)	WWFC	
	FY22	FY23
0 - 5,000	\$120.34	\$125.16
5,001-10,000	\$187.98	\$195.50
>10,000	\$429.62	\$446.80



# Procedural Requirements



- 1 Prepare and file written report (Report) each year with the Secretary of the District.

---
- 2 Publish a notice of the filing of the Report and of the public hearing in a newspaper of general circulation (once a week for two weeks).

---
- 3 Hold public hearing to consider protests to the Report and to determine if there is a majority protest.

---
- 4 If there is no majority protest, the Board must approve the Report and approve collecting the WWFC on the property tax rolls, both with a two-thirds vote (five Directors).

---
- 5 File the approved Report with county auditors on or before August 10.

# Timeline




# Staff Recommendation



- Adopt the Report by at least two-thirds of the members of the Board (i.e., five Board members).
- Authorize the District to collect the Fiscal Year 2022 WWFC on the property tax rolls of Alameda and Contra Costa Counties.
- Authorize District staff to adjust the Fiscal Year 2022 WWFC for any affected parcels as new information is provided by the Counties.
- Direct the Secretary of the District to file a copy of the Report with the Alameda County Auditor and the Contra Costa County Auditor.



An aerial photograph of the San Francisco-Oakland Bay Bridge, showing its approach and the city skyline in the background. The bridge is a multi-lane highway that curves along the water's edge. To the left of the bridge, there is a large industrial area with many colorful shipping containers and cranes. In the foreground, there is a large water treatment plant with several circular tanks. The city of San Francisco is visible in the distance, with the Golden Gate Bridge and other landmarks. The text "Thank you! Any questions?" is overlaid on the image in a large, white, sans-serif font.

Thank you!  
Any questions?





*EAST BAY MUNICIPAL UTILITY DISTRICT*

# **Drought Update**

Board of Directors

July 13, 2021

# Water Supply Projections



- District's End of September Storage projection remains at 425 TAF under median conditions
- California Department of Water Resources Bulletin 120 forecast for total runoff 219 TAF under median conditions



# EBMUD CVP Allocation Update



- CVP allocation 33,250 AF (25% of contract)
- Freeport diversions will begin on September 15, 2021



# EBMUD Drought Plan



- Designed to address multi-year drought
- Combines supplemental supply and demand management
- Actions escalate as conditions worsen
- Lessons learned from previous events
- Made major investments in drought infrastructure

- Some customers may notice a different taste when Sacramento River water is introduced.
- Increased threat of algae blooms in dry years
- Invested \$49M to address taste and odor issues (ozone at USL and Sobrante)
- Water is safe to drink



# Taste and Odor Impacts



- Algal blooms are more common during drought and cause changes in taste and odor.
- Proactive communications:
  - Investigate and respond to customer complaints
  - Advise customers of changes using website and social media (e.g. Twitter, Nextdoor)
- Operational changes: include increasing ozone.

# Taste and Odor Impacts



Next steps:

- Develop thresholds to utilize various communication tools.
- Continue emails to customers (industrial/commercial/manufacturing) to notify of changes in water.
- Continue to update the website.

# Make Every Drop Count



## Digital and print ad campaign

- 5-minute shower song recommendations
- Web and social media ads
- Print ads (multi-lingual) later this summer
- Clear Channel – two digital billboards and transit shelters August - September



# New Super Rebate Pilot Program



- Enhancement to existing lawn rebate program
- \$1.50/square foot of lawn replaced
- Provides incentive for more sustainable projects
  - Native plants
  - Sheet mulching
  - Compost
  - Planting in the cool season

# Social Media and Media Outreach



- Post to promote new Super Rebate reached over 1,000 people in the first 24 hours.
- 63 drought interviews with local media in 2021



# Community Outreach



Water Wednesday Series

## DROUGHT, WATER YOU GOING TO DO ABOUT IT?

Find out how you can meet the East Bay's drought challenge!

July 21 - 6 pm - Zoom



**CHARLES BOHLIG**

Water Conservation  
Supervisor



**ALICE TOWEY**

Water Conservation  
Manager



**WHITNEY RAY**

Water Conservation  
Supervisor



# Questions





# Coronavirus Update

Board of Directors

July 13, 2021

# State Regulations and Guidance



- No change to state/county regulations and guidelines
- Many safety protocols rescinded in June related to occupancy limits, social distancing, carpooling, mask wearing (with exceptions), and travel restrictions
- Other protocols remain: COVID-19 prevention plan, regular cleaning/disinfection, and symptom self-checks
- State Emergency Declaration and many Executive Orders remain in effect

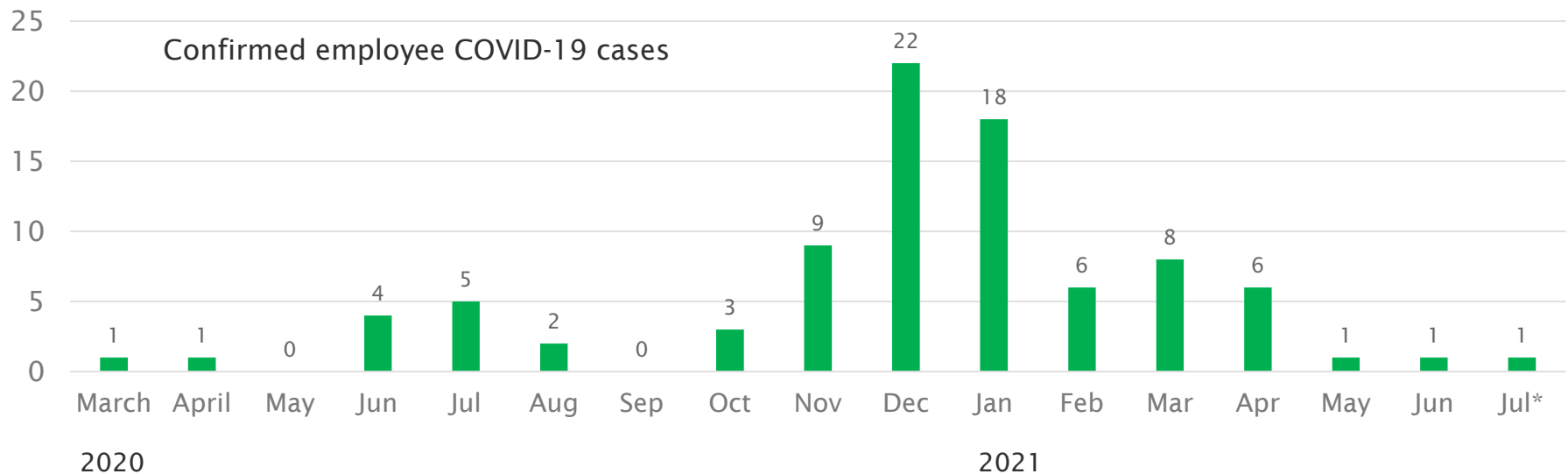
# Employee Impacts from COVID-19



88 employee and 14 contractor positives to date

- 1 employee isolating with COVID-19
- 6 employees off work (quarantining or recovering from vaccine)

COVID-19 leave available through Sept. 30



\* through July 9

# Vaccination Update



	Fully Vaccinated	At Least Partially Vaccinated
District	69%	NA
Alameda County	69%	82%
Contra Costa County	73%	79%

- District figures based on documentation received
- District will continue to educate employees on the benefits of vaccination and facilitate vaccination
- Requesting mobile vaccination units from Contra Costa County for work sites in that county



# Safe Return to Workplace Plan Employees



- Fully telecommuting employees began returning to District worksites one to two days/week on June 21
- Incrementally increase building occupancy and continue to limit public access
  - Occupancy of the Main Administration Building now ranges between 20-25%
- Employees with childcare issues related to pandemic, or medical issues, can discuss alternatives with supervisor and HR
- Consistent with long-term telecommuting plan

# Safe Return to Workplace Plan

## Board of Directors



- Language in Executive Order N-29-20 was replaced by Executive Order N-08-21 and is in effect until Sept. 30, 2021
- In-person attendance of Board members during interim is voluntary
- Board room closed to the public until Sept. 30, 2021
- Instructions for public participation will be updated prior to Sept. 30, 2021

# Questions

