



**BOARD OF DIRECTORS
EAST BAY MUNICIPAL UTILITY DISTRICT**

375 - 11th Street, Oakland, CA 94607

Office of the Secretary: (510) 287-0440

Notice of Time and Location Change

PLANNING COMMITTEE MEETING

Tuesday, April 13, 2021

Closed Session 8:30 a.m.

Regular Meeting 9:15 a.m.

*****Virtual*****

Notice is hereby given that the Tuesday, April 13, 2021 Planning Committee Meeting of the Board of Directors has been rescheduled from 9:15 a.m. The meeting will open at 8:30 a.m. for roll call and announcement of a closed session. The public portion of the meeting will resume at 9:15 a.m.

Due to COVID-19 and in accordance with the most recent Alameda County Health Order, and with the Governor's Executive Order N-29-20 which suspends portions of the Brown Act, **this meeting will be conducted via webinar and teleconference only**. In compliance with said orders, a physical location will not be provided for this meeting. These measures will only apply during the period in which state or local public health officials have imposed or recommended social distancing.

Dated: April 8, 2021

A handwritten signature in blue ink that reads 'Rischa S. Cole'.

Rischa S. Cole

Secretary of the District



**BOARD OF DIRECTORS
EAST BAY MUNICIPAL UTILITY DISTRICT**

375 - 11th Street, Oakland, CA 94607

Office of the Secretary: (510) 287-0440

AGENDA
Planning Committee
(Closed Session and Regular Committee Meeting)
Tuesday, April 13, 2021
****Virtual****

Location

Due to COVID-19 and in accordance with the most recent Alameda County Health Order, and with the Governor's Executive Order N-29-20 which suspends portions of the Brown Act, **this meeting will be conducted by webinar or teleconference only.** In compliance with said orders, a physical location will not be provided for this meeting. These measures will only apply during the period in which state or local public health officials have imposed or recommended social distancing.

*Committee Members Marguerite Young {Chair}, Lesa R. McIntosh
and Frank Mellon will participate by webinar or teleconference*

*****Please see appendix for public participation instructions*****

Planning Committee Closed Session
8:30 a.m.
****Virtual****

ROLL CALL:

ANNOUNCEMENT OF CLOSED SESSION AGENDA:

1. Threat to public services or facilities pursuant to Government Code section 54957:
Conference with Sophia K. Skoda, Director of Finance; Andrew J. Levine, Manager of Information Systems; William L. Johnson, Information Systems Division Manager; and Barry N. Gardin, Internal Auditor Supervisor.

(The Committee will discuss the closed session agenda item via webinar or teleconference)

Planning Committee Meeting

Resume public portion of meeting

9:15 a.m.

****Virtual****

ANNOUNCEMENTS FROM CLOSED SESSION:

The Planning Committee closed session meeting is scheduled to reconvene at 9:15 a.m. for announcements.

PUBLIC COMMENT: The Board of Directors is limited by State law to providing a brief response, asking questions for clarification, or referring a matter to staff when responding to items that are not listed on the agenda.

DETERMINATION AND DISCUSSION:

2. 2020 Mokelumne Fall-run Chinook Salmon and Steelhead Returns (Tognolini)
Due to time constraints, this time was deferred.
3. Annual Recreation Report – 2020 (Tognolini)
Due to time constraints, this items was deferred.
4. Central Reservoir Replacement Project Update (Yoloye)
and Final Environmental Impact Report
5. San Pablo Reservoir Monterey Pine Management Plan (Tognolini)

ADJOURNMENT:

Disability Notice

If you require a disability-related modification or accommodation to participate in an EBMUD public meeting please call the Office of the Secretary (510) 287-0404. We will make reasonable arrangements to ensure accessibility. Some special equipment arrangements may require 48 hours advance notice.

Document Availability

Materials related to an item on this agenda that have been submitted to the EBMUD Board of Directors within 72 hours prior to this meeting are available for public inspection in EBMUD's Office of the Secretary at 375 11th Street, Oakland, California, during normal business hours, and can be viewed on our website at www.ebmud.com.

**Planning Committee Meeting
Tuesday, April 13, 2021
8:30 a.m. and 9:15 a.m.**

EBMUD public Board meetings will be conducted via Zoom.
Board committee meetings are recorded, and live-streamed on the District's website.

Please visit this page beforehand to familiarize yourself with Zoom.
<https://support.zoom.us/hc/en-us/articles/201362193-Joining-a-Meeting>

Online

<https://ebmud.zoom.us/j/94576194030?pwd=dWZlc3hNU3JNUVBQYmNKWjJSNVZQdz09>

Webinar ID: 945 7619 4030

Passcode: 925293

By Phone

Telephone: 1 669 900 6833

Webinar ID: 945 7619 4030

Passcode: 925293

International numbers available: <https://ebmud.zoom.us/u/agkOoY9Nt>

Providing public comment

The EBMUD Board of Directors is limited by State law to providing a brief response, asking questions for clarification, or referring a matter to staff when responding to items that are not listed on the agenda.

If you wish to provide public comment please:

- Use the raise hand feature in Zoom to indicate you wish to make a public comment
<https://support.zoom.us/hc/en-us/articles/205566129-Raising-your-hand-in-a-webinar>
 - If you participate by phone, press *9 to raise your hand
- When prompted by the Secretary, please state your name, affiliation if applicable, and topic
- The Secretary will call each speaker in the order received
- Comments on **non-agenda items** will be heard at the beginning of the meeting
- Comments on **agenda items** will be heard when the item is up for consideration
- Each speaker is allotted 3 minutes to speak; the Committee Chair has the discretion to amend this time based on the number of speakers
- The Secretary will keep track of time and inform each speaker when his/her allotted time has concluded

To observe the Planning Committee Meeting,
please visit: <https://www.ebmud.com/about-us/board-directors/board-meetings/>

EAST BAY MUNICIPAL UTILITY DISTRICT

DATE: April 8, 2021

MEMO TO: Board of Directors

THROUGH: Clifford C. Chan, General Manager *CCC*

FROM: Michael T. Tognolini, Director of Water and Natural Resources *mtt*

SUBJECT: 2020 Mokelumne Fall-run Chinook Salmon and Steelhead Returns

SUMMARY

The total fall-run Chinook salmon return to the Mokelumne River in 2020 is estimated at 4,044 fish, including 601 fish that spawned in the river and 3,443 collected at the hatchery for egg production. The return is significantly below the post-1999 average of 9,796 and is only 74 percent of the long-term average (1940–2020) of 5,435. This is the first year the salmon return was below the long-term average since 2009. Because of year-to-year variability, one indicator the District uses to assess the health of the Mokelumne fishery is the running nine-year average return, which represents three complete three-year salmon life cycles. The 9-year average annual return is 12,507, or 230 percent of the long-term average. The steelhead trout return to the hatchery also experienced a dip; in 2020, 186 adult fish returned to the hatchery, down from 500 the previous year. A review of the 2020 return and the key factors affecting salmon and steelhead returns to the Mokelumne River will be presented at the April 13, 2021 Planning Committee meeting.

DISCUSSION

In 2020, the Mokelumne River Chinook salmon return was considerably lower than the most recent decadal trend. While the District continues to provide a suite of management actions to support the salmon population, the species is subject to multiple stressors in both the freshwater and marine environment. Lower returns this year were also observed for the tributaries from the American River south through the San Joaquin River tributaries. Figure 1 (Attachment) shows salmon returns to the Mokelumne River since recordkeeping began in 1940. All tributaries showed declines from 2019 returns, but only tributaries south of the Mokelumne showed percentage declines similar to the Mokelumne.

The District conducted four pulse flow releases beginning in late October, coordinated with Woodbridge Irrigation District on an additional three pulses in November, and coordinated with the U.S. Bureau of Reclamation on Delta Cross Channel (DCC) gate closures. All pulses showed a positive fish response. Reasons for low salmon returns to the Mokelumne could be based on survival during their life cycle or straying on their return to the Mokelumne. Survival

issues could include poor ocean, Delta, or tributary conditions. Straying issues could be based on pulse timing and run timing, and high flows from the Sacramento River. To address these potential issues, staff will focus on attraction flow planning and fall temperature management. This coming fall, staff will closely coordinate Mokelumne pulse timing with Sacramento River operations and communicate earlier on DCC gate operations to minimize straying. Additionally, staff will coordinate reservoir operations, so the coldest water gets transferred to Camanche from Pardee, improving cold-water pool conditions and survival of juvenile salmon in the river.

The Mokelumne salmon population continues to make up a significant portion of the commercial and recreational catch off the coast of California. Numbers released by California Department of Fish and Wildlife show that Mokelumne hatchery origin salmon made up approximately 13 percent of the commercial and 16 percent of the recreational catch respectively compared to 18 percent of the commercial and 19 percent of the recreational catch respectively in 2019. While these numbers reflect declines from 2018's record contribution of 43 percent of commercial and 33 percent of recreational catch, the decreases can be attributed to higher contribution rates from other systems recovering from depressed numbers during the drought. The Feather River dominated the ocean catch this year, contributing 50 percent and 51 percent to the recreational and commercial fisheries respectively. The Mokelumne contribution was similar to the American and Coleman contributions, both larger rivers with significantly more fish. Considering the size of the watershed, average annual runoff, and modest (< 3 percent) Delta outflow contribution, the Mokelumne's contribution to the salmon industry and dependent businesses remains significant.

Steelhead trout returns for the Mokelumne River (primarily measured at the hatchery) have never been substantial since recordkeeping began in 1963. The District and various resource agency partners who comprise the Mokelumne River Hatchery Coordination Team have, over the last 10 to 15 years, implemented numerous measures to improve returns such as changing release locations and timing, eliminating egg imports, and improving rearing techniques. In 2020, 186 adult steelhead, less than half of last year's total, entered the hatchery, yielding an egg take of approximately 260,000. The production goal for the hatchery is 250,000 yearling steelhead smolts, so the District projects that it will not meet its goals for the year.

NEXT STEPS

Weather and Delta conditions continue to challenge juvenile salmon migrating from the Mokelumne River, and overcoming these effects will be at the forefront of fisheries management activities going forward. The District, working with resource agencies, will continue to implement measures to improve the survival of juvenile salmon as they migrate through the central Delta. The District recently accepted \$450,000 in grant funds from the Healthy Rivers Initiative under Proposition 68 to develop floodplain habitat and improve spawning conditions.

2020 Mokelumne Fall-run Chinook Salmon and Steelhead Returns

Planning Committee

April 8, 2021

Page 3

In addition, staff will continue studies to evaluate the results of barging juvenile salmon and spring pulse flows. The District will continue to engage with resource agency staff, advocacy groups, and others in key forums, such as the Central Valley Project Improvement Act Science Integration Team, Hatchery Scientific Review Group Statewide Policy Team, and Central Valley Hatchery Coordination Team, to incorporate the latest science and help build on the successes of the last two decades.

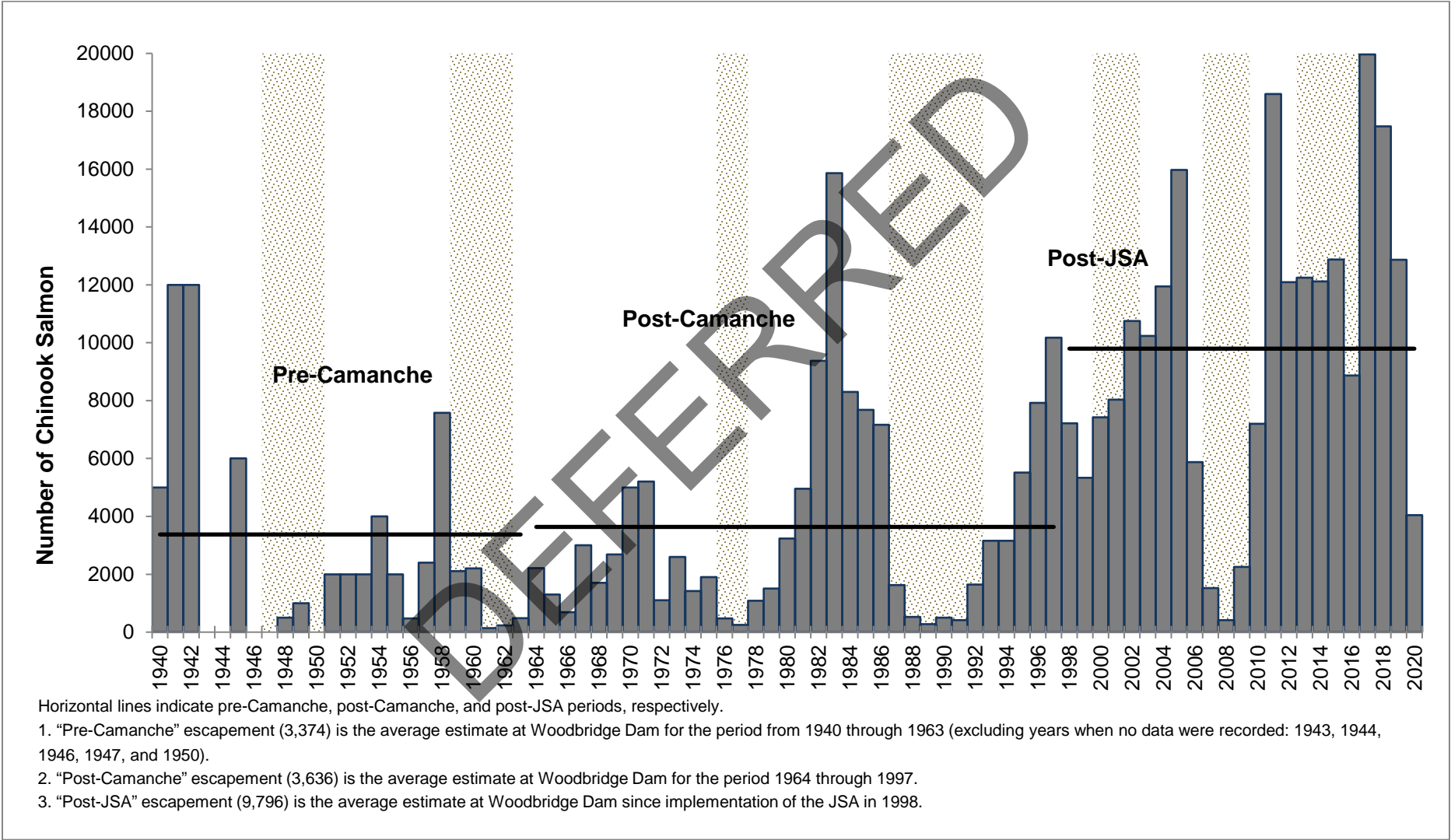
CCC:MTT:dec

Attachment

I:\SEC\2021 Board Related Items\Committees 2021\041321 Planning Cmte\WNR - 2020 Mokelumne Fall-run Chinook Salmon.docx

DEFERRED

Annual Chinook Salmon Escapement Totals to the Lower Mokelumne River since 1940 with Drought Periods Delineated by Shaded Bars.



EAST BAY MUNICIPAL UTILITY DISTRICT

DATE: April 8, 2021

MEMO TO: Board of Directors

THROUGH: Clifford C. Chan, General Manager *CCC*

FROM: Michael T. Tognolini, Director of Water and Natural Resources *MTT*

SUBJECT: Annual Recreation Report – 2020

SUMMARY

This memo summarizes recreation activities in the District's watersheds during 2020 and reports on key performance indicators (KPIs) established for recreation in the Mokelumne and East Bay Watersheds. A presentation will be made at the April 13, 2021 Planning Committee meeting.

DISCUSSION

The District's watershed and recreation facilities receive nearly 2 million visitors per year. Visitation is predominantly at the developed recreation areas, with approximately half at Lafayette Recreation Area, followed by Camanche Recreation Area. In the East Bay, there was a slight overall decrease from 2019 levels to a total of 1,145,699 visitors in 2020, with reduced recreation area use offset by increased watershed trail use. Visitation in the Mokelumne also dropped slightly in 2020 along with revenue. Significant activities in 2020 were related to the District's COVID-19 response.

NEXT STEPS

For the Mokelumne area, staff will focus on completing paving in the Camanche Recreation Area, finishing the new entrance gate complex at Camanche North Shore, and continuing to address the challenges related to steadily increasing visitation. In the East Bay, replacement of self-contained restroom facilities at Lafayette Reservoir will continue in 2021 and the sewer force main/lift station project is progressing. At San Pablo Recreation Area, providing high level customer service consistent with COVID-19 guidelines is the top priority for 2021. And on the East Bay trails, the installation of the "You Are Here" signs at the staging areas will be completed. Staff will review the FY21 visitor satisfaction and East Bay public safety data to determine if modifications are warranted.

CCC:MTT:dec

Attachment

2020 RECREATION SUMMARY REPORT

Significant recreation activities in 2020 include:

- COVID-19 shutdowns slashed revenues in the developed recreation facilities and created ongoing challenges during reopening of facilities.
- COVID-19 guidelines severely curtailed distant travel and other leisure activities resulting in an increased demand for local, outdoor recreation.
- Due to COVID-19, for a short time in spring of 2020, trail permit requirements were suspended. When the permit requirement was reinstated in April, permit sales increased sharply. In the East Bay, trail permit sales jumped to 2,869 for the month of May, compared to 460 for May 2019.
- East Bay recreation facilities maintained limited operations and provided limited safe public access during Public Safety Power Shutoff (PSPS) events.

In an effort to reduce COVID-19 transmission, distribution and collection of the Visitor Satisfaction Surveys were suspended in early March of 2020. As a result, no reliable visitor satisfaction data was collected.

Recreation programs and projects strengthen the District's relationships with local communities, help to ensure a safe and enjoyable experience for our recreational guests, and support the District's Strategic Plan goals of Long-Term Water Supply, Water Quality and Environmental Protection, Long-Term Infrastructure Investment, and Customer and Community Services.

Mokelumne Watershed and Recreation

The Mokelumne Watershed Master Plan established several KPIs for evaluating recreational services based on financial performance, public safety, and customer satisfaction levels. KPIs for cost recovery were met at all developed recreation areas. However, all cost recovery totals were lower than 2019 except for the Camanche Hills Hunting Preserve. These decreases are likely due to periods of closure and reduced capacity that resulted in lower revenues. For the first time in five years, visitor incidents, *noise curfew violations*, *safety violations*, and *visitor evictions*, dropped below 0.04 percent. This is largely due to a decrease in visitation based on reduced operating capacities. Boating accidents increased significantly and the KPI for boating safety was not met.

In 2020, several significant projects and programs were completed or continued:

- A 25-kilowatt standby generator was installed at the Camanche Hills Hunting Preserve. The generator will ensure continuity of operations during PSPS events or extended power outages.
- A new boat inspection area was completed inside Camanche North Shore. The inspection station eliminates or significantly reduces the number of boats waiting on inspections outside of the gate. This helped move non-boating customers through the gate more quickly and reduce traffic impacts on the neighborhood streets outside of the park.
- The District made major repairs to the water distribution systems without impacting campers due to the extended campground closure.

- In 2020, recreation operations focused primarily on compliance with changing state and county health orders and ensuring the visiting public adhered to face covering mandates and social distancing requirements.
 - Campgrounds were closed for portions of the year. As restrictions were modified, campground capacities were set to no more than 50 percent capacity to provide space between sites to promote social distancing.
 - Day-use capacities were reduced by 50 percent at all recreation areas. Traffic control was implemented at recreation area entrances to address a higher-than-normal volume of visitors. The traffic control points ensured reduced carrying capacities were met by controlling the number of visitors present in the recreation areas.
 - All the restrooms available to the public were sanitized daily within the recreation areas, staging areas, and trail systems.
 - The Upcountry trail system saw a significant increase in usage. Exact numbers are unknown because trail registration booths were taken out of service to prevent surface contact spread of COVID-19. Extra ranger patrols were added to address the increase in usage.

The Mokelumne Watershed Master Plan and subsequent management plans establish several KPIs for evaluating recreational services based on financial performance, public safety and customer satisfaction levels. Tables 1 through 3 show annual visitation for the Mokelumne area recreation venues and performance results based on the established KPIs.

Table 1 – Annual Visitation at Mokelumne Recreation Venues (Visitor Days)

Location	CY 2016	CY 2017	CY 2018	CY 2019	CY 2020
Camanche North Shore	192,660	242,036	236,674	233,340	213,896
Camanche South Shore	211,040	254,378	259,714	267,291	184,349
Pardee Recreation Area	57,224	89,926	56,630	64,234	74,573
Mokelumne River Day Use	64,252	55,233	48,313	38,115	48,438
Camanche Hills Hunting Preserve	12,462	12,610	13,368	12,176	12,253
Watershed Trails*	9,417	9,519	11,199	11,191	20,249
Total	547,055	663,702	625,898	626,347	553,758

* Includes Middle Bar usage starting in CY18.

Table 2 – KPI Performance Results: Percent Cost Recovery for Mokelumne Venues

Location	Goal % Cost Recovery	FY16	FY17	FY18	FY19	FY20
Camanche North Shore Recreation Management Area	45%	54%	64%	71%	70%	61%
Camanche South Shore Recreation Management Area	45%	63%	54%	68%	66%	59%
Camanche Hills Hunting Preserve	95%	94%	100%	97%	92%	105%
Pardee Recreation Area	40%	34%	46%	38%	46%	43%

**A change in concession reporting skewed the North Shore/South Shore percentages for FY16.*

Table 3 – KPI Performance Results: Public Safety in the Mokelumne Watershed

KPI	Goal	CY 2016	CY 2017	CY 2018	CY 2019	CY 2020
Boating Accidents (# of accidents per boating day)	0.01%	0.011% 3 accidents 28,130 vessels	0.011% 4 accidents 36,918 vessels	0.009% 3 accidents 34,537 vessels	0.006% 2 accidents 34,140 vessels	0.02% 6 accidents 28,442 vessels
Visitor Incidents (# of visitor incidents per visitor day)	0.2%	0.04% 207 incidents 547,055 visitors	0.04% 243 incidents 663,702 visitors	0.04% 249 incidents 625,898 visitors	0.04% 248 incidents 626,347 visitors	0.03% 176 incidents 553,668 visitors

East Bay Watershed Recreation

An area of focus during 2020 was compliance with state and county public health orders related to COVID-19. Signage displaying COVID guidelines were posted at park entrances. Private boat launches, boats rentals, picnic sites, and playgrounds were off-limits. Restrooms and drinking fountains were initially closed.

Opportunities to explore and enjoy nature continue to attract visitors to the East Bay reservoirs and watershed trails. In 2020, visitation counts at the Lafayette Recreation Area decreased by 8.7 percent and visitation at the San Pablo Recreation Area decreased by 26.2 percent, while the watershed trail system showed a 65 percent increase. Lower visitation at the developed recreation areas is attributed to closures and reduced service levels for most of the year due to COVID-19. Cost recovery declined to 36 percent at Lafayette and 50 percent at San Pablo, primarily as a result of reduced revenue at each location.

Recreation safety in the East Bay continues to be very good. There were no major accidents or reported public safety related events in 2020. East Bay Regional Park District (EBRPD) Police continue to make many more pedestrian stops than vehicle stops, focusing on leash-law and trail permit violations. EBRPD officers made 27 traffic stops in 2020 compared to 361 pedestrian stops.

KPIs are used in the East Bay Watersheds for evaluating recreational services based on financial performance, public safety, and customer satisfaction levels. Tables 4 through 6 show annual visitation for the East Bay Recreation Area venues and performance results based on the KPIs.

Table 4 – Recreation Visitation at East Bay Recreation Venues (Visitor Days)

Location	CY 2016	CY 2017	CY 2018	CY 2019	CY 2020
Lafayette Recreation Area	1,080,662	1,003,287	1,071,623	921,188*	840,829
San Pablo Recreation Area	140,638	137,513	147,154	133,714	98,605
East Bay Trails	71,140	86,500	126,072	124,957	206,265
Total	1,292,700	1,227,300	1,344,849	1,179,859	1,145,699

*Count impacted by transition to new vehicle entrance procedure.

Table 5 – KPI Performance Results: Percent Cost Recovery for the East Bay Venues

Location	Goal (% Cost Recovery)	FY16	FY17	FY18	FY19	FY20
Lafayette Recreation Area	65%	79%	79%	59%	57%	36%
San Pablo Recreation Area	40%	57%	55%	55%	61%	50%

Table 6 – KPI Performance Results: Public Safety in the East Bay Watersheds


KPI	Goal	CY 2016	CY 2017	CY 2018	CY 2019	CY 2020
Visitor Incidents (number of documented visitor incidents per visitor day)	0.2%	0.03%	0.04%	0.025%	1.2%	1.3%
		371 incidents 1,292,70 visitors	447 incidents 1,227,30 visitors	335 incidents 1,344,84 visitors	1,483* incidents 1,179,85 visitors	1,550* incidents 1,145,70 visitors


*Reflects a change in how EBRPD reports incidents. All contacts by EBRPD officers are now recorded as incidents.

EAST BAY MUNICIPAL UTILITY DISTRICT

DATE: April 8, 2021

MEMO TO: Board of Directors

THROUGH: Clifford C. Chan, General Manager 

FROM: Olujimi O. Yoloje, Director of Engineering and Construction 

SUBJECT: Central Reservoir Replacement Project Update and Final Environmental Impact Report

SUMMARY

The Central Reservoir Replacement Project (Project) will replace the existing open-cut reservoir located in Oakland, which was identified as a high priority for replacement in the West of Hills Master Plan and 2012 Infrastructure Rehabilitation Plan for Distribution Reservoirs. A Value Engineering Study completed in June 2017 determined the optimal configuration, materials, and construction methods for the replacement. A Draft Environmental Impact Report (EIR) was prepared for the Project and released on November 15, 2019. The Final EIR was made available on April 1, 2021. This memo provides an update on the Project, including an overview of the public outreach process and comments received. The Board will be asked to consider certification of the Final EIR and Project approval at the April 13, 2021 Board meeting. Staff will provide a presentation at the April 13, 2021 Planning Committee meeting.

DISCUSSION

Central Reservoir, a 154-million gallon (MG) open-cut reservoir constructed in 1910, is located on a 27-acre site in Oakland and bounded by 23rd Avenue to the west, Sheffield Avenue to the east, 25th Avenue/East 29th Street to the south, and Interstate 580 to the north (see Attachment 1). Central Reservoir is located at an elevation too low relative to the customers it serves and other reservoirs in the Central Pressure Zone, creating unusable storage. In addition, Central Reservoir requires removal and disposal of polychlorinated biphenyls (PCBs) in the reservoir's interior coating, has a roof that does not meet current seismic codes, has a failing liner with potential leakage in the upper areas resulting in reduced operating levels, and is about three times larger than required. Staff provided Project updates to the Planning Committee on March 14, 2017 and November 12, 2019.

Project Purpose and Description

The Project will improve water service reliability, water quality operations, and long-term maintenance by replacing an aging facility and embankment dam with an optimally-sized facility

that matches the elevations of the other existing reservoirs in the Central Pressure Zone. The higher reservoir elevation will improve operational flexibility by allowing Central Reservoir to support future planned and unplanned outages of other facilities, improve reliability by providing buffer storage to the west-of-hills distribution system, and improve water quality operations by right-sizing the storage amount and increasing the operating range of the Central Reservoir.

The Project will replace the existing open-cut reservoir with three 17-MG concrete tanks within the existing reservoir basin with a water level approximately 20 feet higher than the current reservoir. The Project includes removal of vegetation and demolition of the existing reservoir, roof, lining, and material storage building, followed by removal of a portion of the reservoir's main embankment, construction of a reinforced tank foundation system, new tanks, new rate control station, valve structure, service road and site paving, bioretention area, and security fencing all within the existing reservoir property. The Project site design incorporates existing landscaping, a mix of earthen berms, trees, and shrubs to screen the tanks and emphasize the natural setting at the perimeter of the site while balancing earthwork. The Project includes a design option to allow Redwood Day School to construct a private driveway along the northern end of the property. Attachment 2 shows the proposed Project site plan and landscape plan.

Draft EIR Analysis and Mitigation Measures

Staff completed and circulated the Project's Draft EIR for a 60-day public review period from November 15, 2019 through January 13, 2020. Notices of Availability were sent to approximately 3,100 residents, businesses, and responsible agencies, and were also placed on the District's website and in the East Bay Times. Staff held public meetings to discuss the Draft EIR on December 4, 2019 and January 7, 2020. The District received 16 comment letters and emails containing 56 individual comments from Caltrans, the California Department of Toxic Substance Control, the Redwood Day School, and Oakland residents. In addition, staff recorded 30 verbal comments during the public meetings. The comments focused on truck trip traffic, noise, hazardous materials handling during demolition, and the proposed driveway connecting the Redwood Day School parking area adjacent to Sheffield Avenue to Ardley Avenue.

The Draft EIR analysis concluded that there are potential impacts from construction noise that may exceed the City of Oakland's daytime noise standards during demolition, site preparation, valve structure construction, and site restoration. Based on the duration and location of all daytime construction activities, no location (or receptor) would experience noise levels in excess of noise standards for more than a total of approximately 10 workdays over the entire 6-year construction period. In addition, noise may exceed the City of Oakland's evening and nighttime noise standards when new pipelines are connected to existing pipelines near the intersection of 25th Avenue and East 29th Street for up to two consecutive nights. The noise impacts are significant and unavoidable and will require the District to approve a Statement of Overriding Considerations when approving the Project. The remaining potential impacts are either less than significant or would be less than significant with mitigations. Key mitigation measures include:

- Nighttime lighting controls during nighttime construction.
- A 16-foot-tall temporary noise barrier along property adjacent to the Redwood Day School and fence-mounted noise blankets along the western, southern, and eastern site perimeter.
- Schedule construction activities outside of normal school hours when it is feasible to do so for heavy construction equipment operated within 100 feet of the Redwood Day School.
- Alternative lodging for residents affected by night work, if requested.
- Haul and equipment delivery trucks traveling in front of the Manzanita Community School will be restricted outside of school drop off and pick-up times. Where not feasible, flaggers will be provided.

The District will also incorporate a number of its standard construction specifications, standard practices from the Environmental Compliance Manual, District Procedures, Design Guides, and Engineering Standard Practices into the Project. These standard specifications and standard practices are designed to address typical characteristics of District construction projects, and reflect generally applicable District standard operating procedures. Although these standard specifications and practices ensure protection of public and worker health in the handling of hazardous materials such as asbestos from the reservoir's roof panels, the District contracted with an independent consultant with expertise in asbestos abatement to review previous encapsulation activities at the Central Reservoir site. The consultant also provided recommendations to assist staff in developing Project-specific steps to best implement its asbestos abatement standard practices and procedures during roof demolition, including asbestos handling and related earth moving activities for the Project. The consultant's recommendations were incorporated into the Project and Final EIR.

In response to a request from Redwood Day School, the Project includes a driveway design option analyzed in the Draft EIR, which would allow Redwood Day School to construct a new, one-way private driveway along the northern end of the property, connecting Sheffield Avenue to Ardley Avenue through a lease agreement with the District. Mitigation Measure TRA-1 would require Redwood Day School to perform an operational and safety analysis for the Ardley Avenue/new Redwood Day School Driveway intersection, and obtain all necessary approvals from the City of Oakland, including the City finding that turns onto Ardley Avenue from the proposed driveway can be safely accommodated.

Public Outreach

In addition to the public meetings held during the Draft EIR public review period, an outreach meeting with City of Oakland staff was held in November 2017, and two neighborhood outreach and scoping meetings were held in September 2017 and February 2018. Two meetings were also held with Redwood Day School in April and October 2017. The meetings were convened to present the conceptual site and landscape plans, discuss the potential environmental factors to be addressed in the EIR, and receive community input and feedback. Issues and concerns raised by City staff and the community at these meetings included construction related traffic, aesthetics, hazardous materials handling during demolition, hydrology, and noise during construction and are addressed in the Final EIR.

The District's website features a Project page with information including the proposed schedule and Project-related documents. This page will be updated throughout construction.

NEXT STEPS

The Board will consider approving the Project and certifying the Final EIR at its April 13, 2021 meeting. If the Board approves the Final EIR, design will occur from 2023 through 2026, followed by construction from 2027 through 2032. Redwood Day School's driveway would be constructed after the Project is complete, or sooner if the driveway can be constructed without interfering with the Project.

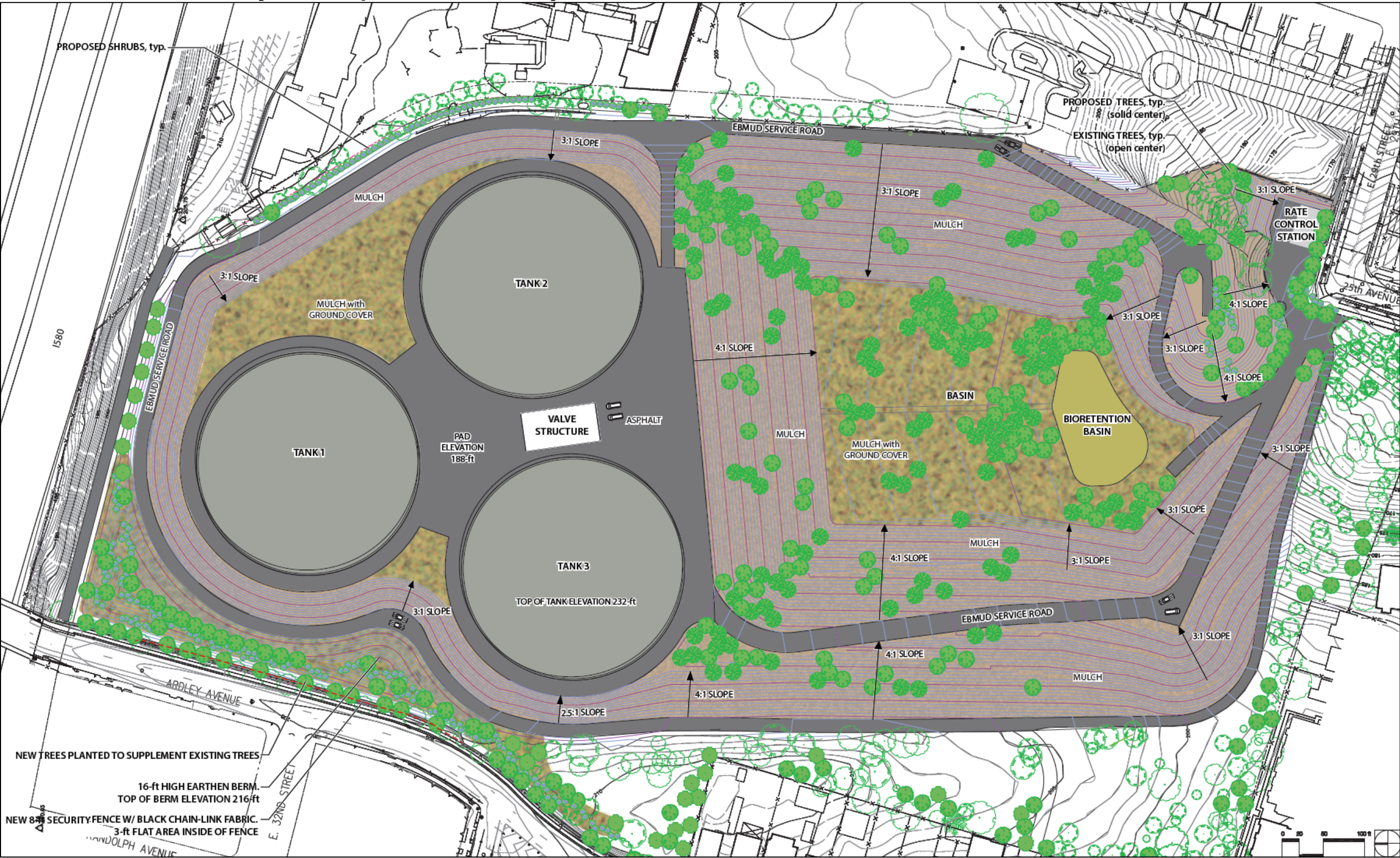
CCC:OOY:djr

Attachments: 1 – Central Reservoir Location Map
2 – Central Reservoir Replacement Project Site and Landscape Plan

Attachment 1: Central Reservoir Location Map



Attachment 2: Central Reservoir Replacement Project Site Plan and Landscape Plan



EAST BAY MUNICIPAL UTILITY DISTRICT

DATE: April 8, 2021

MEMO TO: Board of Directors

THROUGH: Clifford C. Chan, General Manager *CCC*

FROM: Michael T. Tognolini, Director of Water and Natural Resources *MTT*

SUBJECT: San Pablo Reservoir Monterey Pine Management Plan

INTRODUCTION

The District maintains an active fuel reduction program as a key element in managing 29,000 acres of East Bay watershed. The District provides fire suppression services on watershed lands including fire prevention, fuel hazard modification, initial attack fire suppression, and post-suppression restoration. As part of the program, the District developed and implemented the San Pablo Reservoir Monterey Pine Management Plan in July 2001 to manage over 300 acres of Monterey Pine trees. Since 2001, over 5,000 trees have been removed from this pine forest. Recently, staff and the public have observed a significant increase in dying pines. An update on the District's efforts to manage tree die-offs within the East Bay watershed will be provided at the April 13, 2021 Planning Committee meeting.

DISCUSSION

In a typical year, as part of the District's fuel reduction program, the District mows over 100 acres, grazes with livestock over 10,000 acres, removes over 500 trees, burns over 350 brush piles, and maintains over 150 miles of fire roads. In 2019, the District completed the North Orinda Shaded Fuel Break project, a partnership with CAL Fire, Moraga-Orinda Fire District (MOFD), and the East Bay Regional Park District. This fuel break is 1,515 acres, a 14-mile-long fuel break along the northern boundary of Orinda and neighboring communities. Ninety percent of the new fuel break was on the District's watershed.

About 70 years ago, the District planted approximately 30,000 Monterey pine trees along the shoreline and hills around San Pablo Reservoir to prevent soil erosion and reduce sedimentation of the Reservoir. In the 1990s, the forest began to show signs of decline following years of drought, overcrowding, and bark beetle infestation. By 2000, the tree mortality spread, and an estimated 7,000 trees died and were removed. Since then, the District has removed an estimated 5,000 trees with an additional 1,500 dead trees remaining.

In 2001, the District implemented the San Pablo Reservoir Monterey Pine Management Plan (Plan). The 30-year plan was designed to remove the dead trees in a manner consistent with the

reduction guidelines established in the East Bay Watershed Master Plan, which aims to protect water quality, soils, and natural resources. The Plan is an adaptive tool that allows the District to adjust to changing conditions, including tree mortality, over time. For the past 20 years, the measured removal of the dead trees kept pace with the annual mortality rate, maintained a closed canopy, helped retain soil moisture, protected nesting birds, and prevented colonization by weedy, fire-prone fuels. The District used innovative techniques, including the use of draft horses instead of tractors to remove trees to reduce soil disturbance near the reservoir.

In January 2021, the District observed an unprecedented level of tree mortality. The causes of this die-off are still being evaluated, but likely include a combination of drought and other diseases or pests. The District is consulting with CAL Fire, MOFD, and other partners to determine the best course of action and timing for further tree removal in a manner that protects the public, the remaining healthy forest, reservoir water quality, and nesting birds in the area.

NEXT STEPS

As an initial response, the District will prioritize the removal of more dead trees during this calendar year. On April 14, 2021, staff will provide an update on the Plan to the Orinda Supplemental Sales Tax Oversight Commission. On April 21, 2021 the District will conduct a field tour for interested citizens of various fuel modification sites in North Orinda. Staff will collaborate with MOFD to submit a CAL Fire Forest Health Grant application due May 19, 2021.

CCC:MTT:dec