

# Water Supply Update

Board of Directors

January 26, 2021

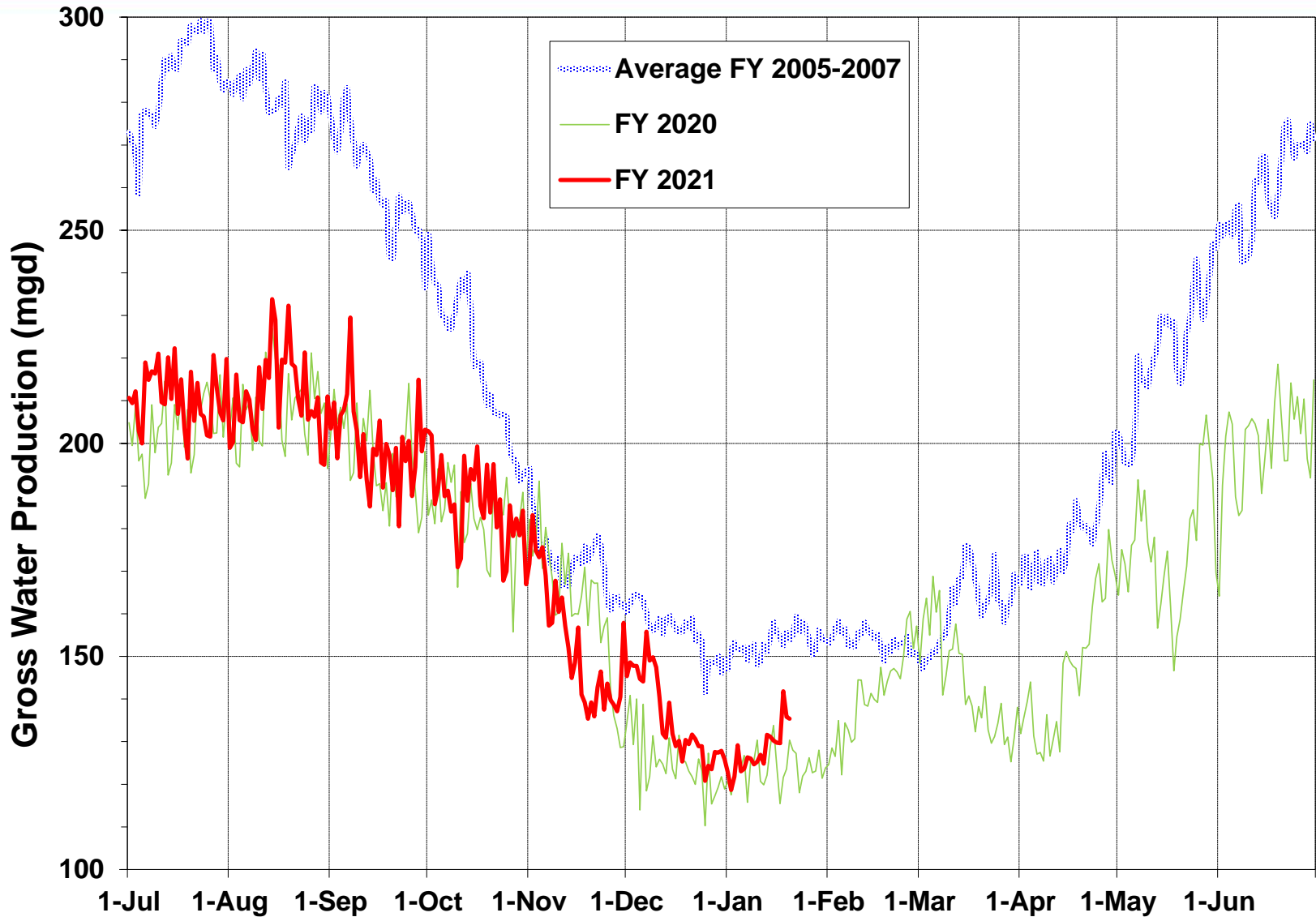
# Water Supply Briefing

- Current Water Supply
- California Water Supply
- Water Supply Projections



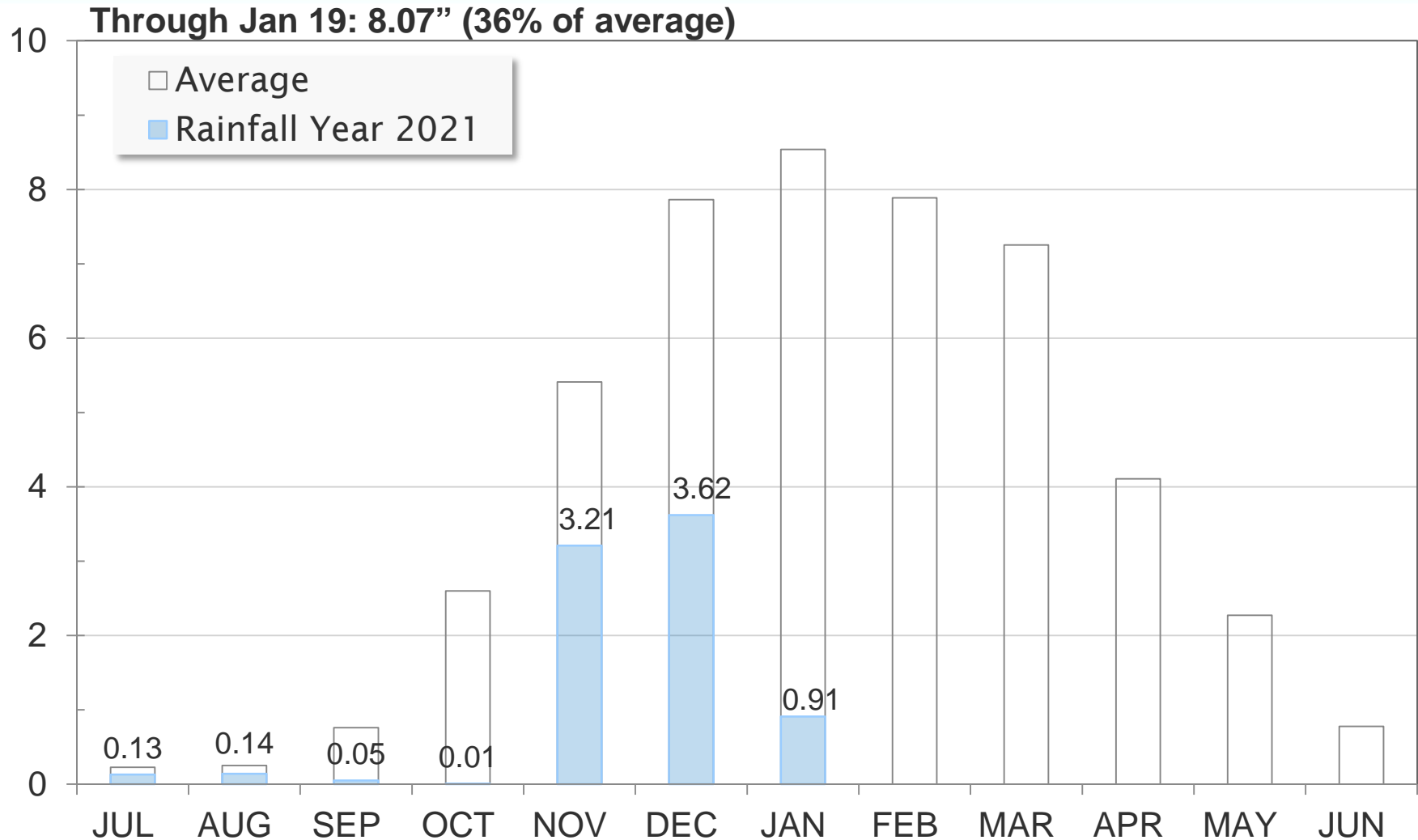
# Current Water Supply

## Gross Water Production



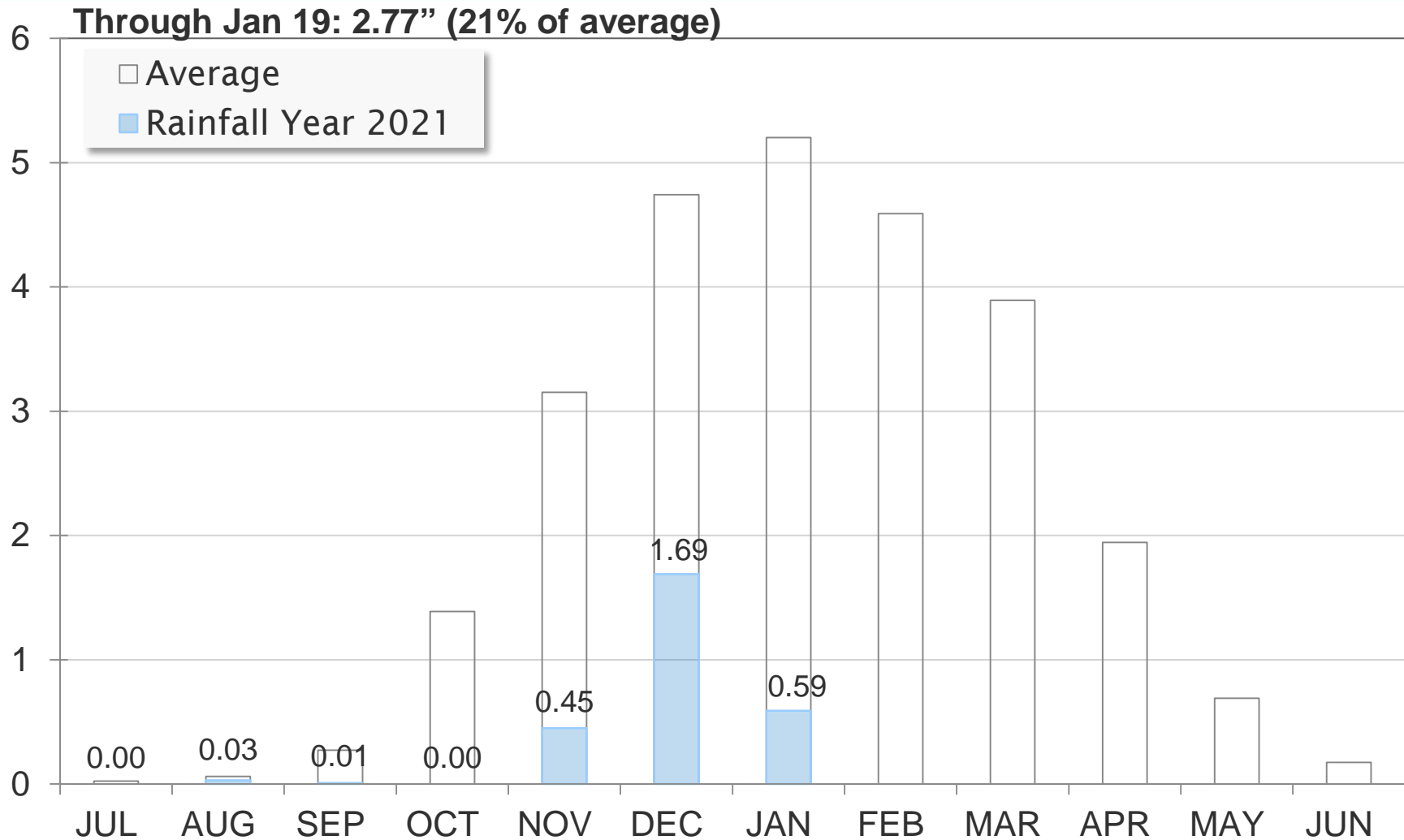
# Current Water Supply

## Mokelumne Precipitation



# Current Water Supply

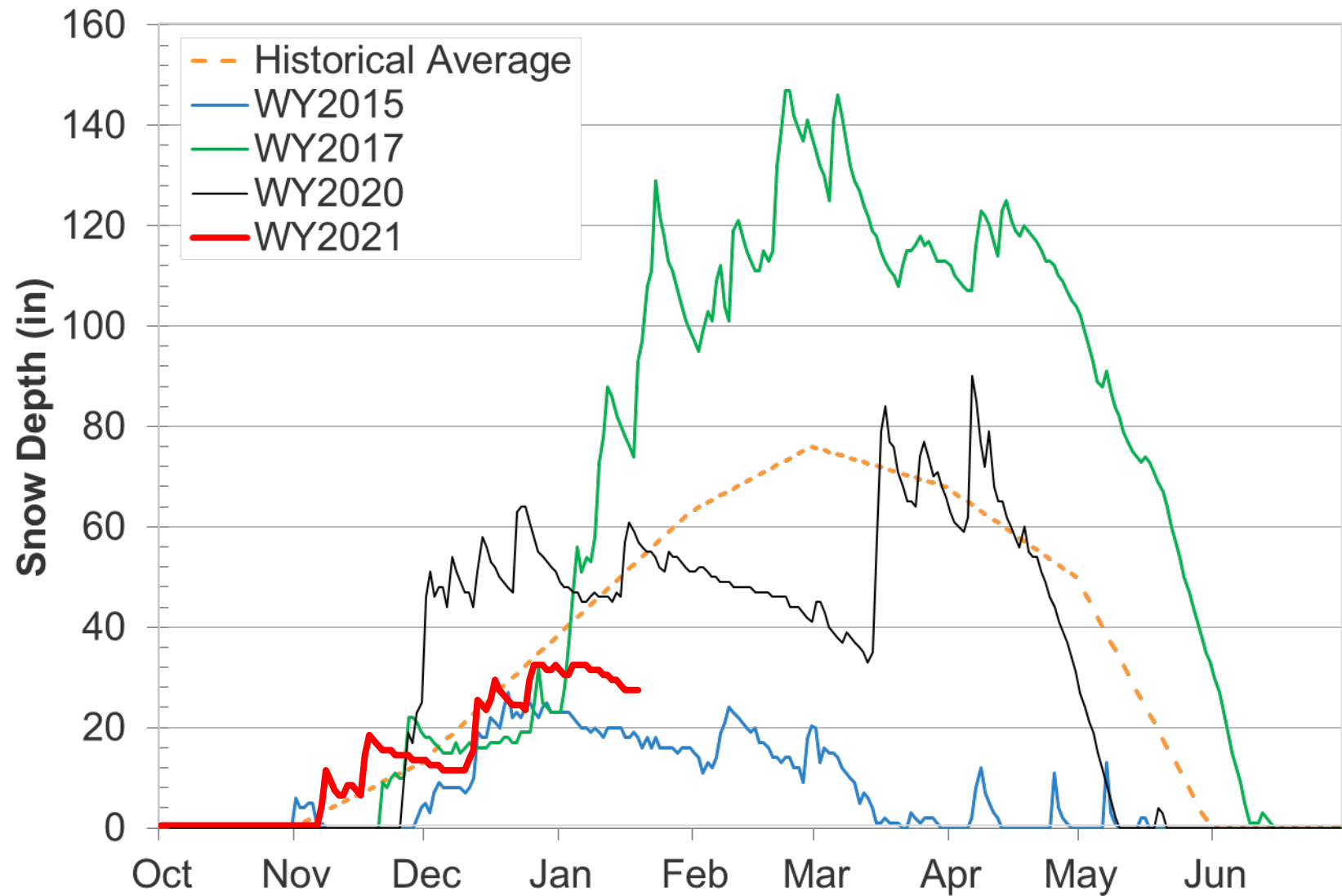
## East Bay Precipitation





# Current Water Supply

## Caples Lake Snow Depth



# Current Water Supply

## Snow



As of Jan. 19, 2021	Cumulative Precipitation	% of Average
Caples Lake Snow Depth	27"	51%
Caples Lake Snow Water Content	9.28"	56%

# Current Water Supply

## Reservoir Storage



As of 1/19/2021	Current Storage	Percent of Average	Percent of Capacity
Pardee	185,590 AF	104%	91%
Camanche	254,520 AF	98%	61%
East Bay	119,040 AF	96%	79%
Total System	559,150 AF	100%	72%

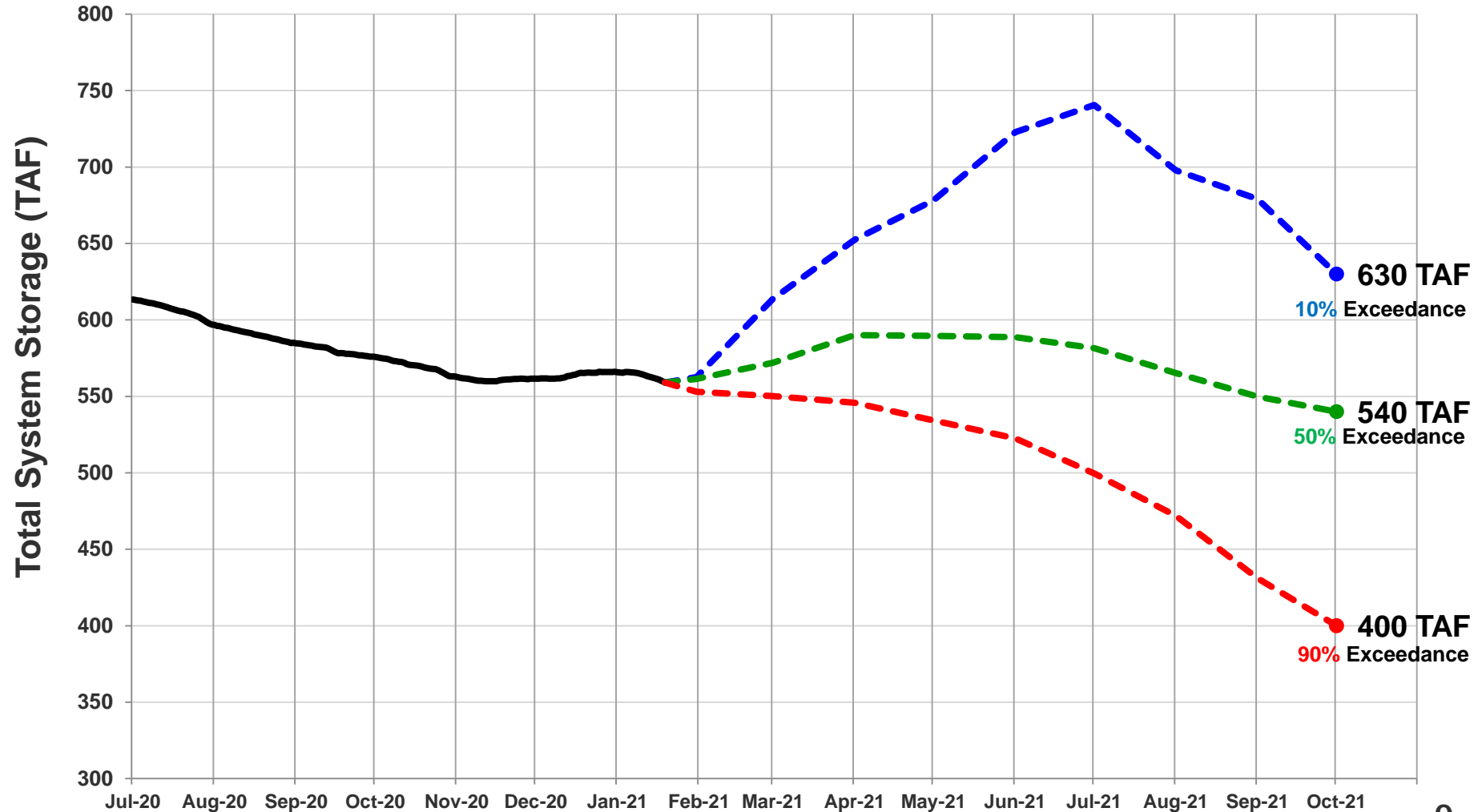


# Water Supply Projections

## Projected 2021 EBMUD Total System Storage



Total System Storage WY2021



# Questions ?



# Coronavirus Update

Board of Directors

January 26, 2021

# State Regulations and Guidance



- Regional Stay-at-Home Order remains in effect for Bay Area
- Amador, Calaveras and Sacramento Counties returned to Purple Tier
- No significant impact expected on District operations
- Continue testing select employees for COVID-19 and developing District vaccination plan



# District Vaccination Plan



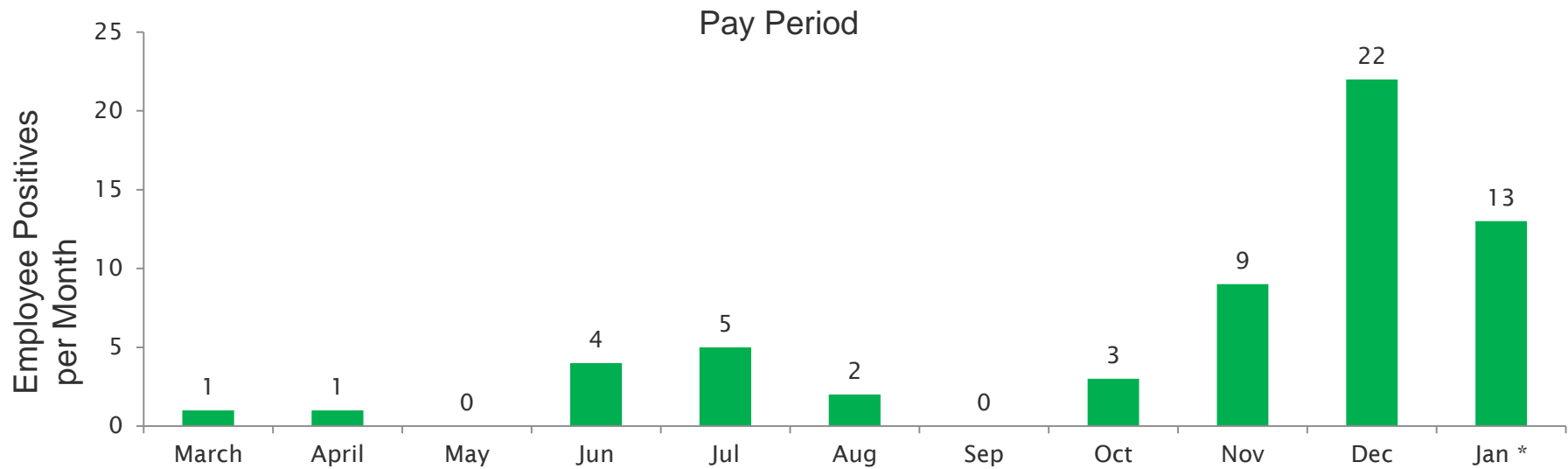
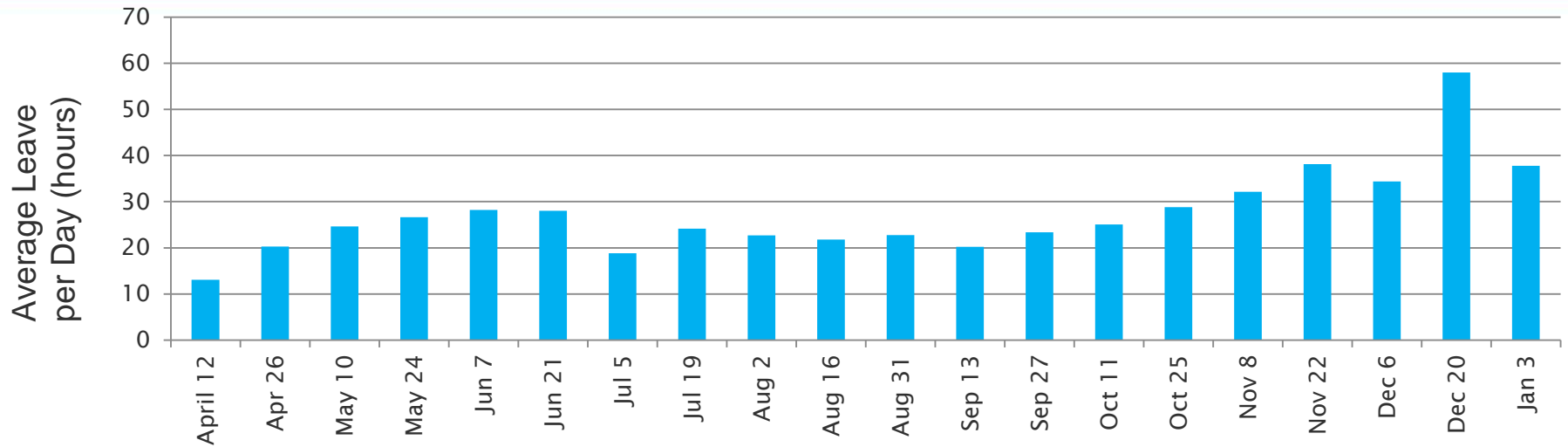
- Not mandatory, but District will encourage and facilitate vaccinations
- Encourage older employees (i.e., over 65) and first-responder employees to register for vaccinations in Phase 1B
- Register District with counties as essential employer to allow certain employees to receive vaccinations in Phase 1C
- Timing of first vaccinations unknown; preparing for February

# District Operations



- Minimal impact from revised State stay-at-home mandate and local health orders
- 60 employee positives, 12 contractors to date
  - 54 employees have returned to work as of January 21
- 21 employees are quarantining

# COVID-related Leave and Positives



\* through Jan. 21

# Questions

