

# Water Supply Update

Board of Directors

January 12, 2021

# Water Supply Briefing



- Water Year 2020 Review
- Current Water Supply Conditions
- California Water Supply Conditions
- Water Supply Projections



# Water Year 2020 Review



Upper Mokelumne Precipitation:	33.4" (48.3" avg)
Snow pack water content (max):	23.8" (31.8" avg)
Local Precipitation:	12.1" (26.8" avg)
Total unimpaired runoff:	420 TAF (740 TAF avg)
End of Water Year Storage:	576 TAF



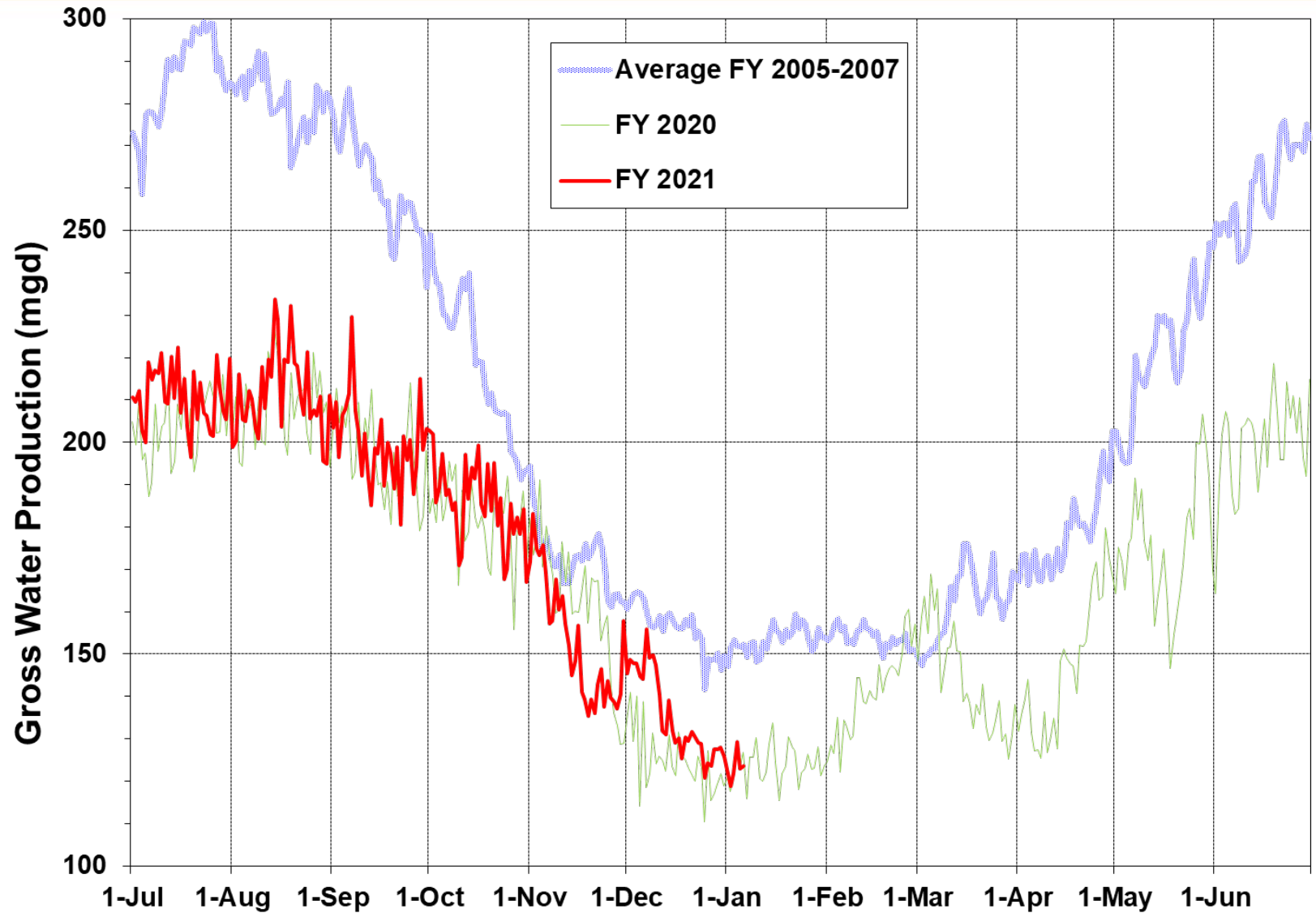


**WATER YEAR 2021**

**CURRENT CONDITIONS**

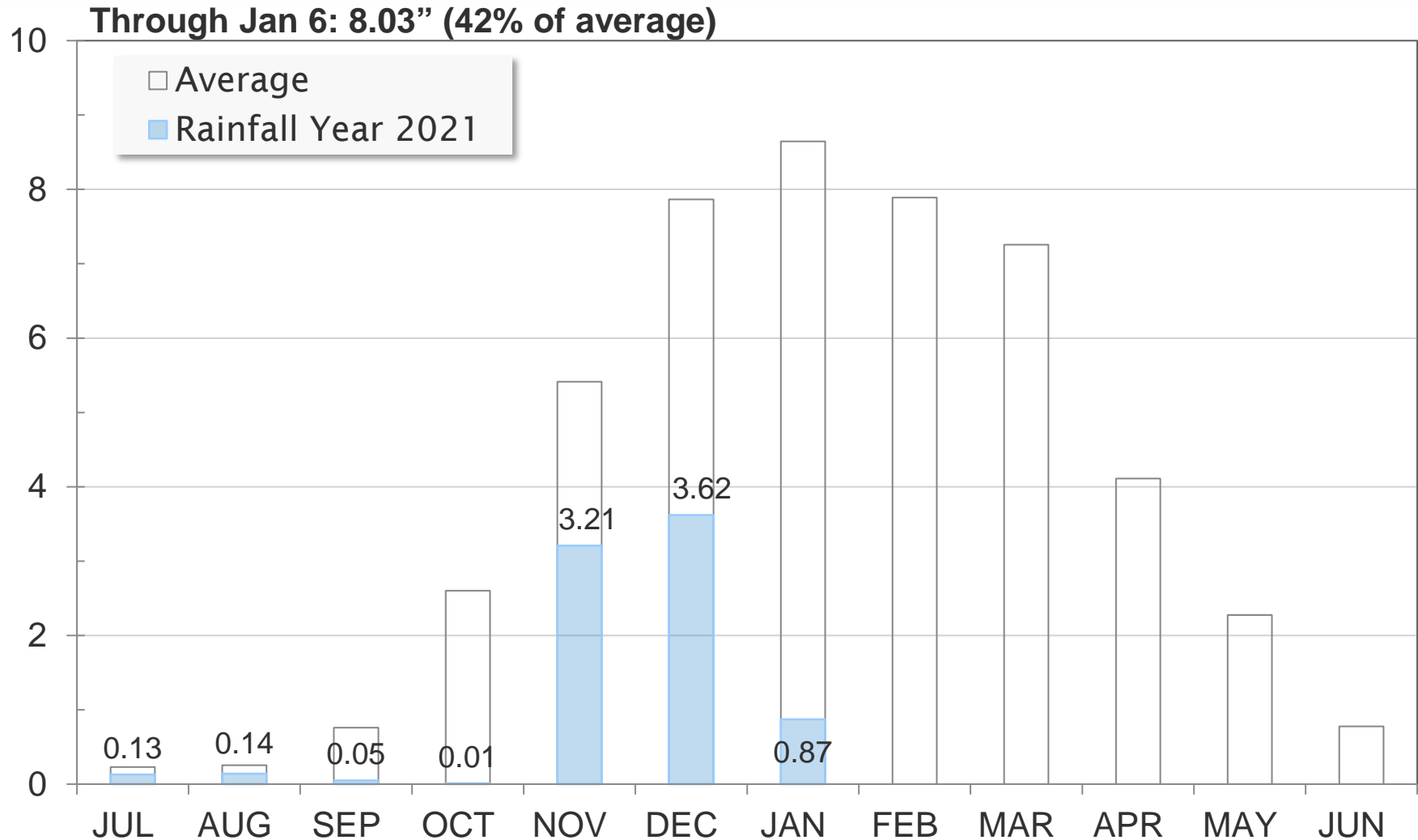
# Current Water Supply

## Gross Water Production



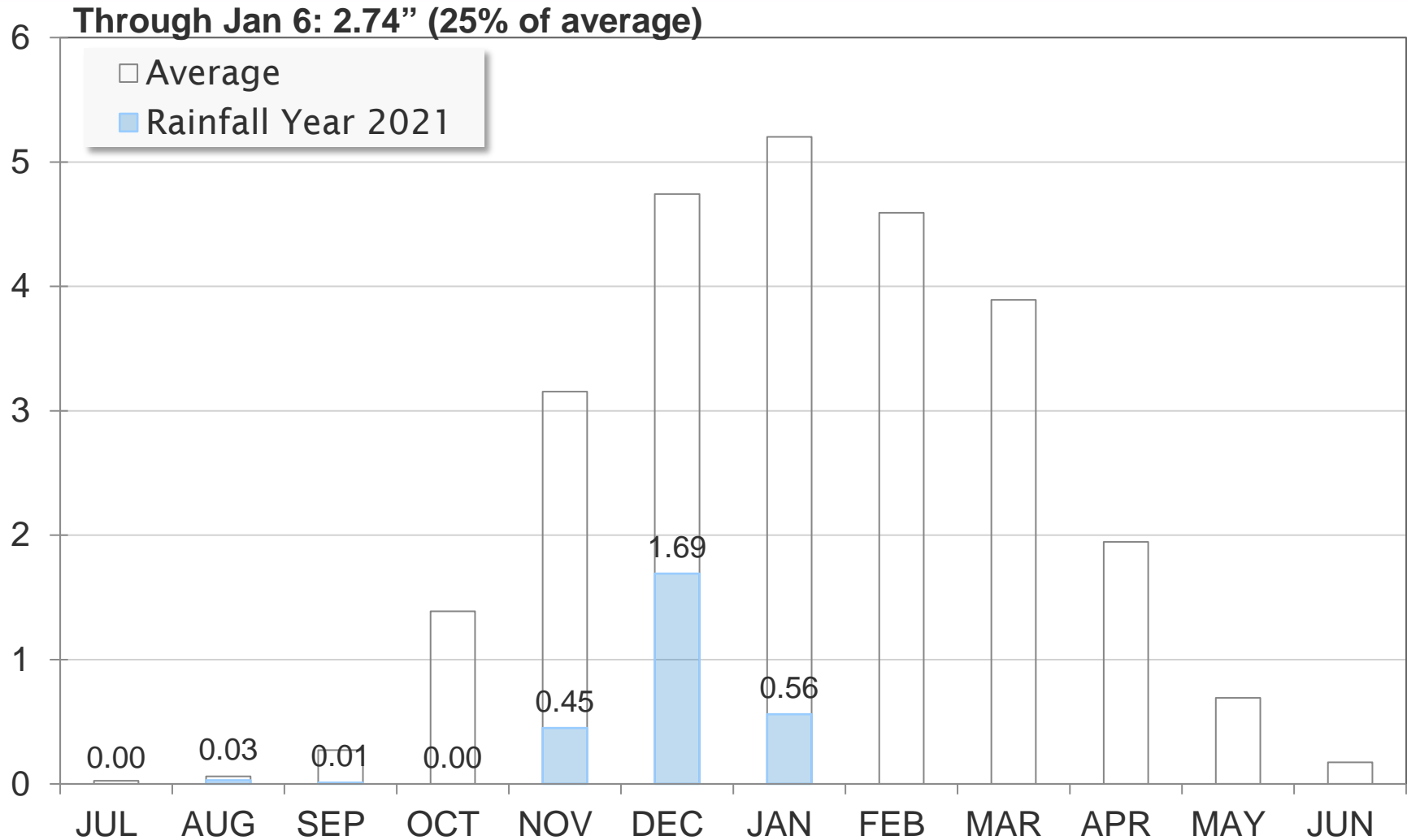
# Current Water Supply

## Mokelumne Precipitation



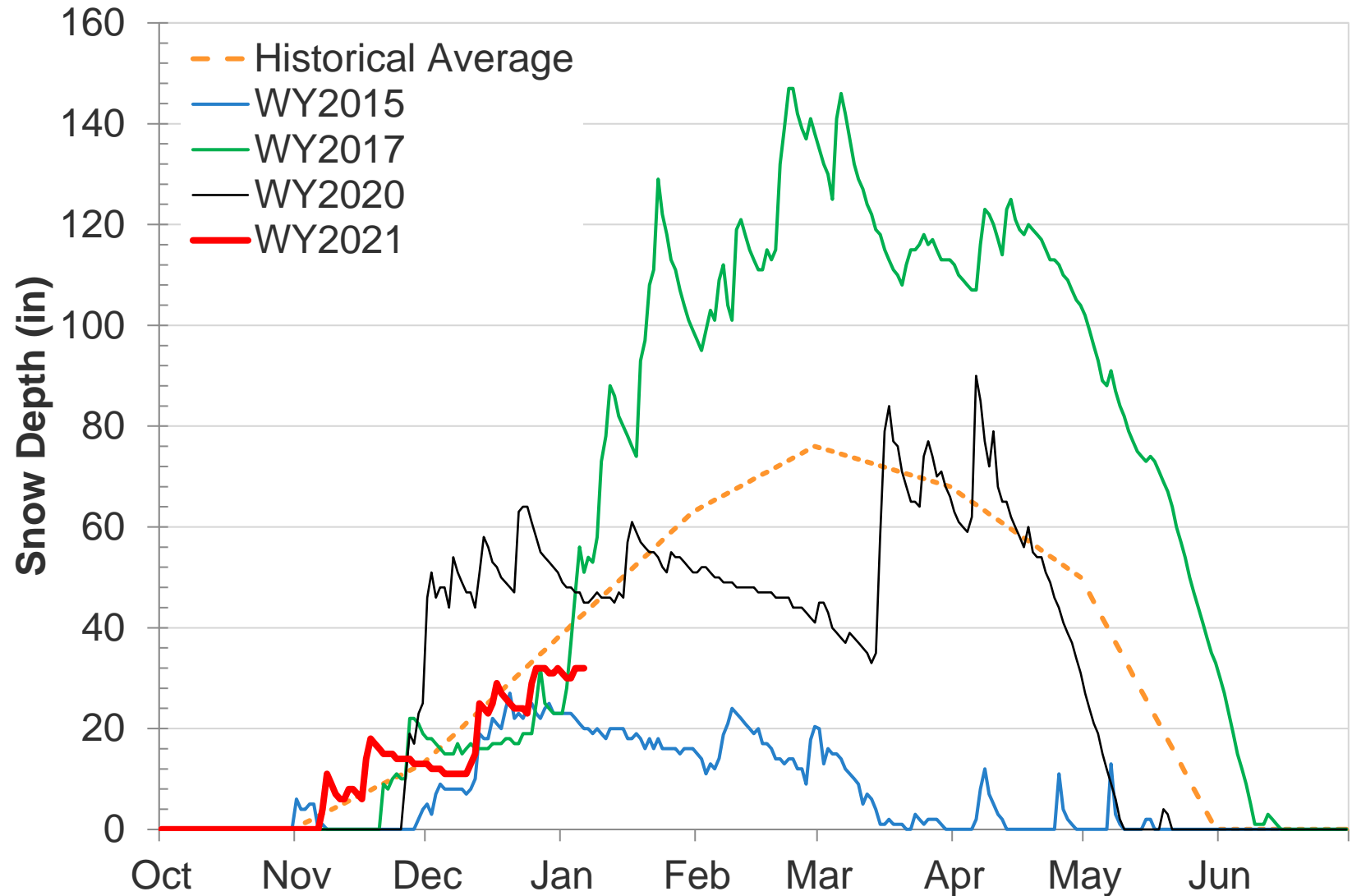
# Current Water Supply

## East Bay Precipitation



# Current Water Supply

## Caples Lake Snow Depth





# Current Water Supply

## Snow



As of Jan. 6, 2021	Cumulative Precipitation	% of Average
Caples Lake Snow Depth	32"	75%
Caples Lake Snow Water Content	9.45"	75%

# Current Water Supply

## Reservoir Storage



As of 1/6/2021	Current Storage	Percent of Average	Percent of Capacity
Pardee	187,520 AF	105%	92%
Camanche	259,130 AF	100%	62%
East Bay	119,070 AF	98%	79%
Total System	565,720 AF	101%	73%



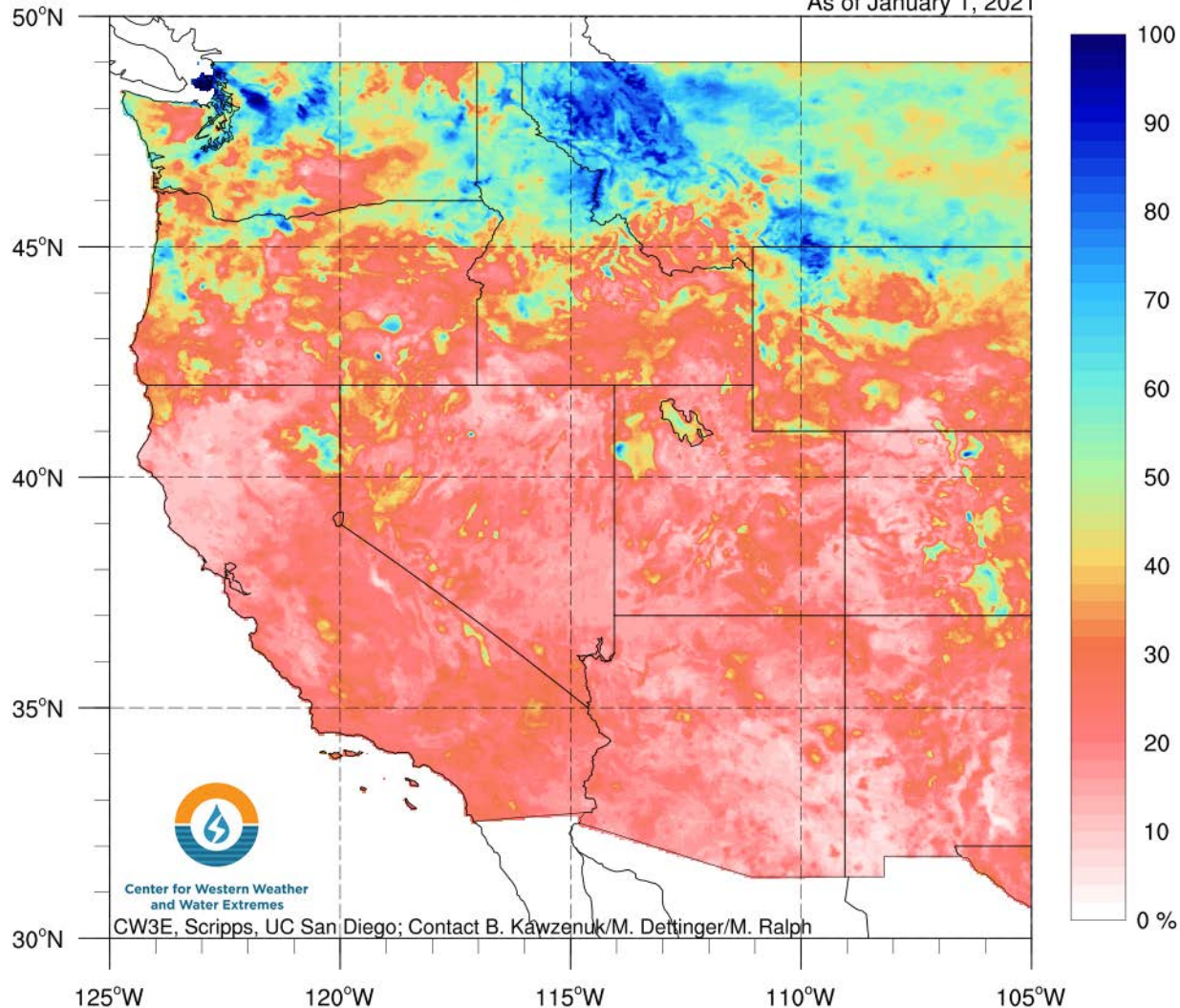
# Water Supply Projections

## Regional Forecasts for Water Year 2021



### Odds of Water Year 2021 Reaching 100% of Water Year Normal Precipitation

As of January 1, 2021



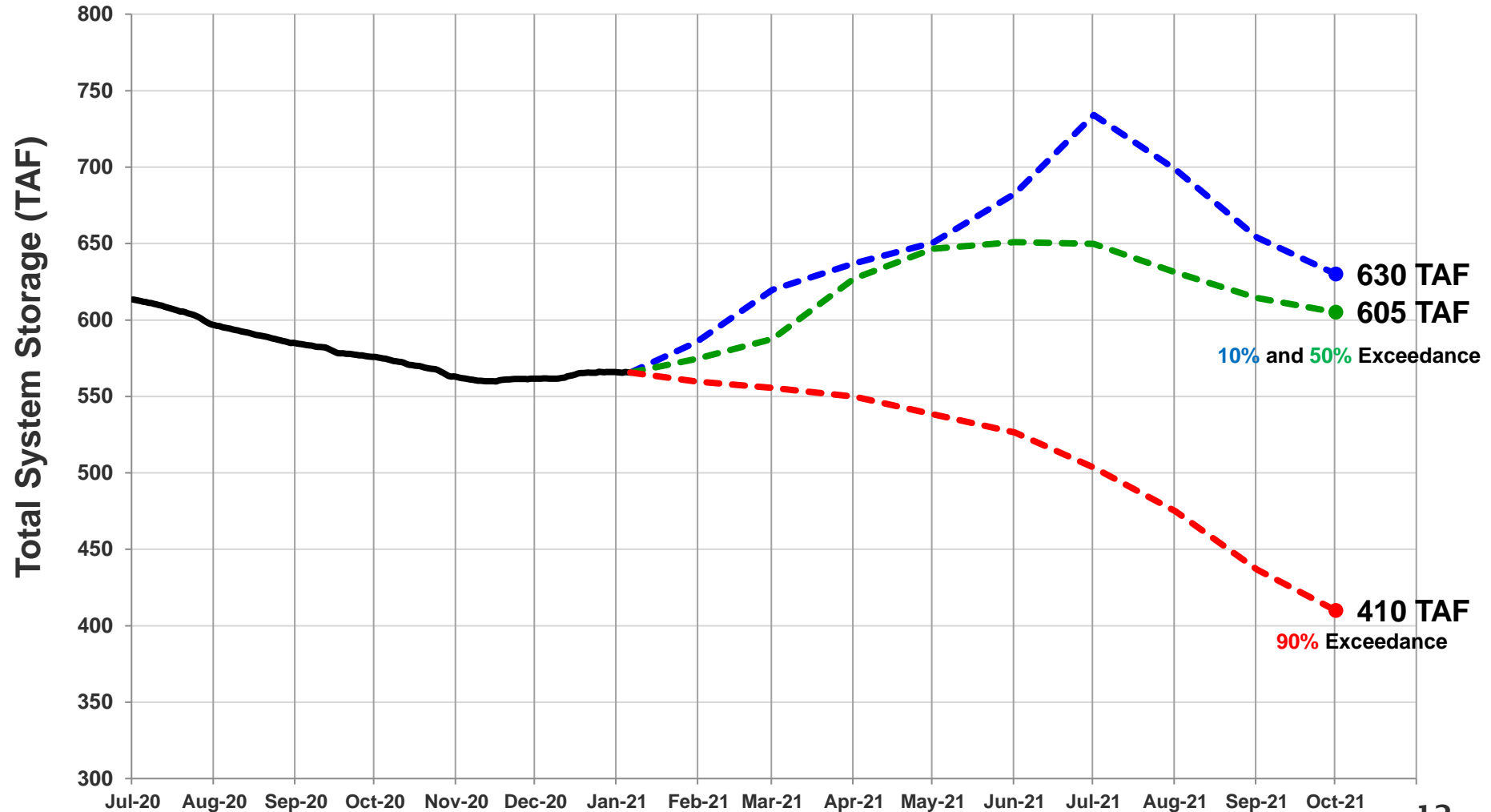
Data courtesy: PRISM Climate Group, Oregon State University, <http://prism.oregonstate.edu>

# Water Supply Projections

## Projected 2021 EBMUD Total System Storage



Total System Storage WY2021



# Questions ?

