

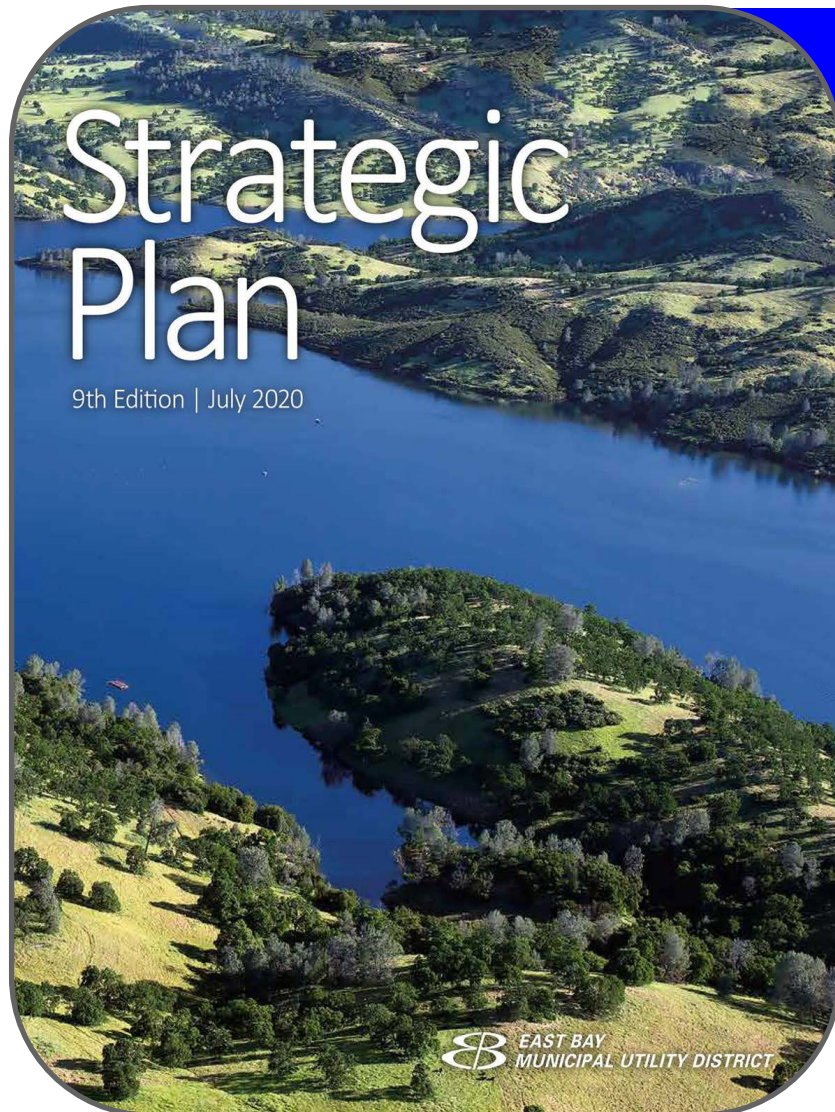


Los Vaqueros Reservoir Expansion

Board of Directors

September 22, 2020

Potential Participation



Ensure a reliable high quality water supply for the future



Improves Reliability during Droughts or Emergencies



Increases resilience to Climate Change



Integrate w/ Regional Partnerships

Surpass environmental standards & protect public trust values



Provides environmental water to the Mokelumne



Supports wildlife refuges in the Central Valley

Potential Participation



JPA Formation
(December 2020)

(very optimistic)

California
**WATER
COMMISSION**



Prop. 1 WSIP Funding:
~50% of Capital Costs
\$22.95 M in early funding
12/31/2022



**30 TAF for
~\$70M**

Potential Partners

- | | |
|---|--|
| 1 | Contra Costa WD
<i>(w/ Brentwood)</i> |
| 2 | SF PUC |
| 3 | EBMUD |
| 4 | BAWSCA |
| 5 | ACWD |
| 6 | San Luis DMWA |
| 7 | Valley Water |
| 8 | Zone 7 |
| 9 | Grasslands |

Joint Powers Authority: Issues



Director

- Elected vs. Staff vs. Any Appointment

Voting

- Super vs. Simple Majority
- District Veto Rights
- Special Voting Provisions

Off-Ramps

- Need enough to feel comfortable signing JPA

Payments

- Ability to self-finance capital share

Assurances

- Reliable delivery to members

Recommendation for Board Consideration



Ad Hoc Committee on Formation of JPA for Los Vaqueros Reservoir

- 2 - 3 Directors
- Likely meet in October with additional meetings as necessary

Coronavirus, Wildfire, and Public Safety Power Shutoff Update

Board of Directors

September 22, 2020

Blueprint for a Safer Economy



- State System for Re-Opening
 - New case rate/positive test rate define tiers
 - Alameda and Contra Costa Counties in highest tier (could be downgraded soon)
 - Central Valley rates remain high
 - Less discretion at county level
- Local testing priority-based (mainly due to capacity)

County risk level	New cases	Positive tests
WIDESPREAD Most schools are closed to in-person instruction, unless they meet certain conditions	More than 7 daily new cases (per 100k)	More than 8% positive tests
SUBSTANTIAL Schools can reopen for in-person instruction after they have remained in the red tier for 14 days	4 - 7 daily new cases (per 100k)	5 - 8% positive tests
MODERATE Schools can reopen for in-person instruction based on state and county guidance	1 - 3.9 daily new cases (per 100k)	2 - 4.9% positive tests
MINIMAL Schools can reopen for in-person instruction based on state and county guidance	Less than 1 daily new cases (per 100k)	Less than 2% positive tests

Current Status (9/15/20)

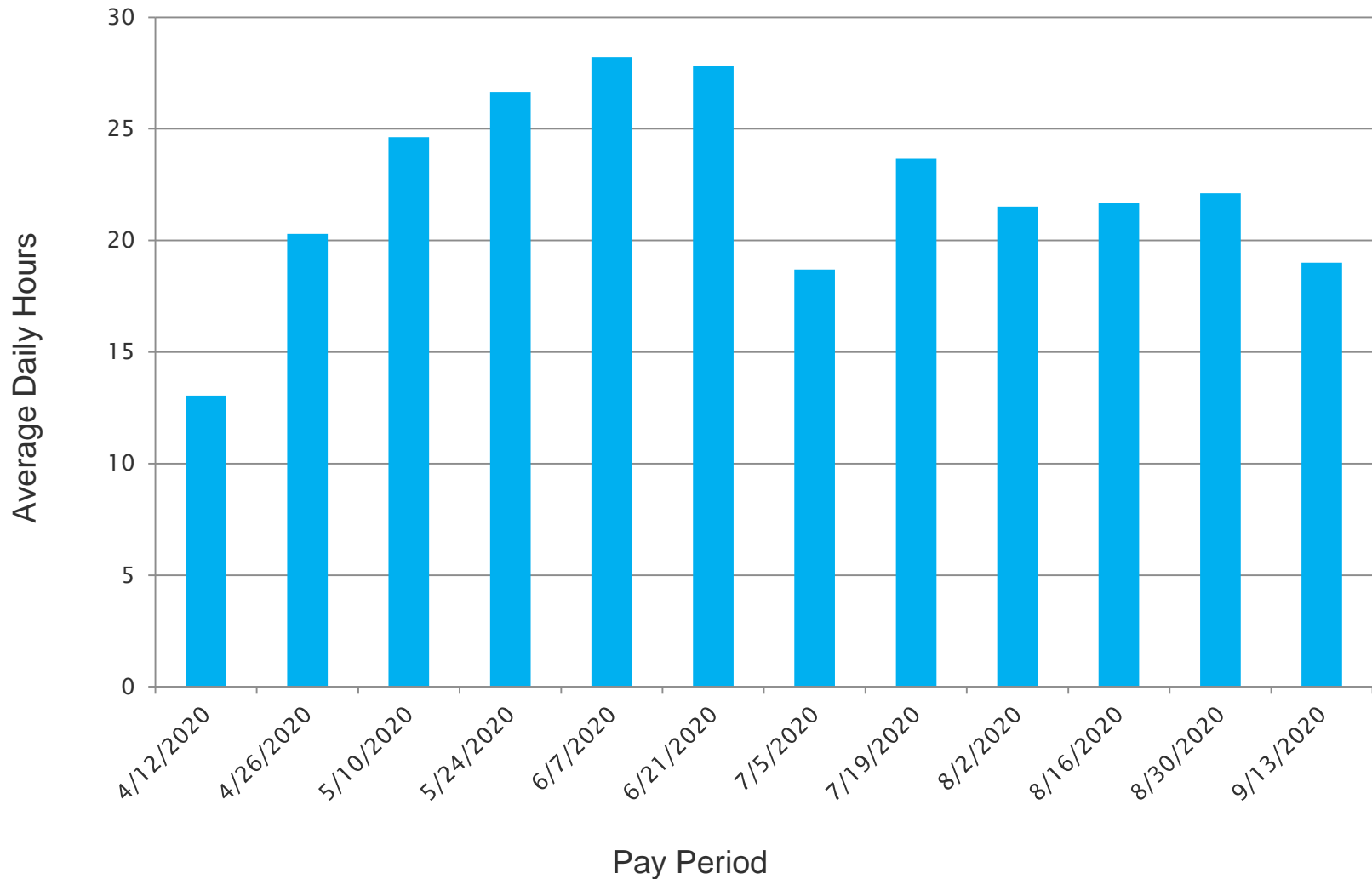


County	Current Risk Level*	New Cases**	Positive Tests
Alameda	Widespread	5.6	3.4%
Contra Costa	Widespread	7.1	4.7%
San Joaquin	Widespread	9.5	7.1%
Amador	Substantial	1.1	1.3%
Calaveras	Substantial	5.2	3.6%

*Must meet both criteria for less restrictive tier two consecutive weeks in order to progress to the lower tier.

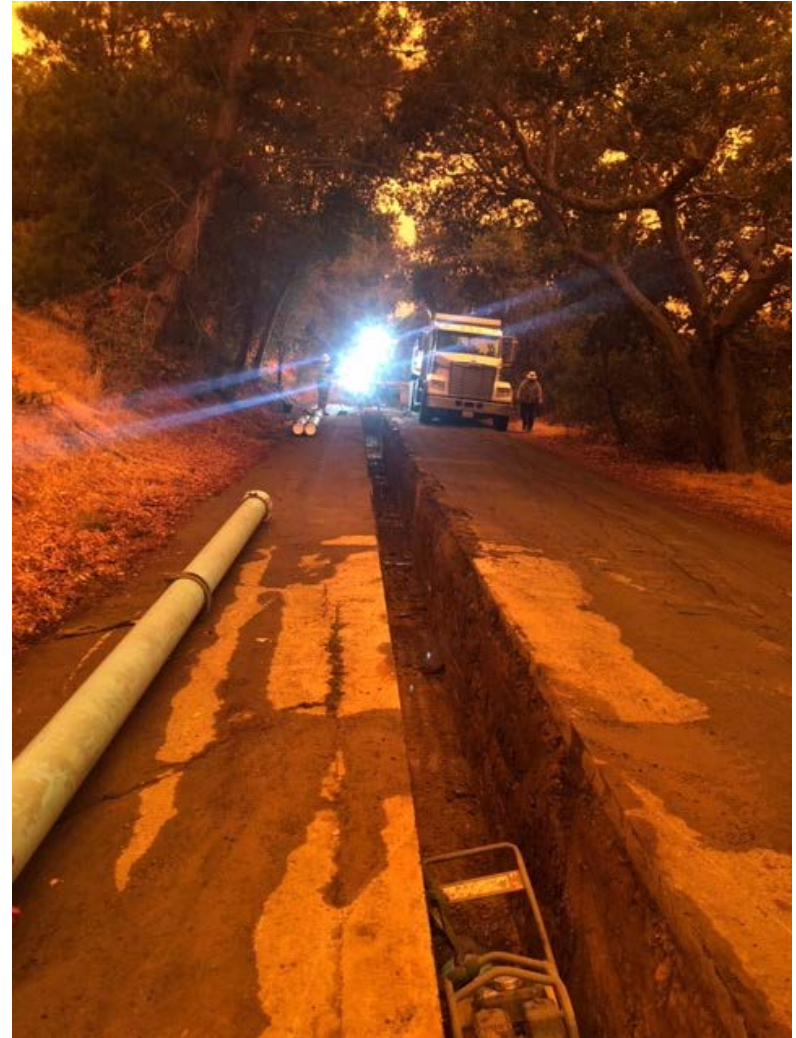
**Daily new cases (per 100k)

COVID-related Leave



Air Quality Issues

- Poor visibility
- Poor air quality
- Response plans
 - N95 masks
 - Less strenuous work
 - Move to better location
 - Defer work



Planning for Public Safety Power Shutoff (PSPS)



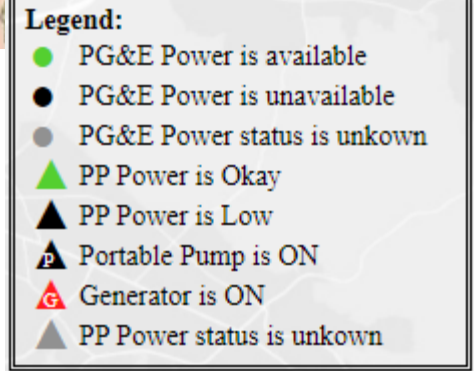
- 40 pieces of equipment deployed
 - 31 rented generators
 - \$147K to date
- PSPS exercise scheduled September 23 and 24



Planning for Public Safety Power Shutoff (PSPS)



- New systems to support response
 - PG&E power available
 - Generator or portable pump operating



Questions

