



## NOTICE OF EXEMPTION

TO:  
Alameda County Clerk - Recorder's Office  
1106 Madison Street  
Oakland, CA 94607

FROM: (LEAD AGENCY)  
EAST BAY MUNICIPAL UTILITY DISTRICT  
Office of the Secretary  
375 Eleventh Street, MS 806  
Oakland, CA 94607-4240

- ☒ Lead Agency is the Project Applicant
- ☒ Lead Agency is Public Agency Approving Project
- ☒ Lead Agency is Carrying Out Project

### PROJECT INFORMATION

1. TITLE: Routine Main. Activities for Water Ops & Material Distribution Fac.
2. LOCATION: (City, County, and specific location)  
Ten facilities located in Alameda and Contra Costa Counties, see attached maps
3. DESCRIPTION:  
This Project is for routine activities necessary to maintain the capacity of the facilities' respective creek channels and functional and structural integrity of existing structures. This Notice of Exemption (NOE) supersedes the previous NOE filed in 2015. See attached document titled Routine Maintenance Activities for Water Operations and Material Distribution Facilities Project

### EXEMPTION FINDING (Check one)

This project is exempt from CEQA because:

1. ☐ Activity is not a project
2. ☐ Activity is Ministerial (Sec.21080(b)(1); Guideline 15268)
3. ☐ Activity is a Declared Emergency (Sec.21080(b)(3); Guideline 15269(a))
4. ☐ Activity is an Emergency Project (Sec.21080(b)(4); Guideline 15269(b)(c))
5. ☒ Activity is Categorically Exempt Under Guideline 15301, 15302, and 15304
6. ☐ Activity is Statutorily Exempt Under Guideline
7. ☒ Reasons why project is exempt: Project will be conducted in previously disturbed and/or developed areas.  
Project meets the definition of: 15301(c)(h) for maintenance and/or repair of existing facilities, 15302(c) for replacement and/or reconstruction of existing facilities, and 15304(a)(f) for minor trenching and/or backfilling  
Project will have no significant environmental impacts relative to Locations, Cumulative Impact, Scenic Highways, Significant Effect due to unusual circumstances, Hazardous Waste or Historical Resources as pursuant to Section 15300.2 of the CEQA Guidelines.

### INITIATING UNIT: 785

#### APPROVAL

05/20/2020

Deirdre Mena

Chandra Johannesson

1. DATE PREPARED

2. PREPARED BY (Initial)

3. REVIEWED BY (Unit Supv. Initial)

David Woodard

4. RECOMMENDED BY (Division/Section Manager)

Deirdre Mena

704

Senior Environmental Health &  
Safety Specialist

510-287-1559

5. CONTACT PERSON

MAIL SLOT #

TITLE

PHONE

### NOTICE OF EXEMPTION APPROVED FOR FILING WITH THE COUNTY CLERK

DATE

DEPARTMENT DIRECTOR

DATE FORWARDED TO COUNTY CLERK

SECRETARY OF THE DISTRICT

## **Routine Maintenance Activities for Water Operations and Material Distribution Facilities Project**

### **Project Description**

Conduct routine maintenance activities at ten East Bay Municipal Utility District (EBMUD) sites, including nine water operations facilities and one material distribution center, as listed below:

- Alameda County (four facilities):
  - Burdeck Regulator, 3213 Burdeck Drive, Oakland, CA 94602
  - Claremont Center, 44 Roble Court, Berkeley, CA 94705
  - Country Club Reservoir, 81 Graeagle, Oakland, CA 94605
  - Oakport Material Distribution Center, 5601 Oakport Street, Oakland, CA 94621
- Contra Costa County (six facilities)
  - Lafayette Water Treatment Plant, 3848 Mt. Diablo Blvd, Lafayette, CA 94549
  - Larkey Reservoir, 2201 Larkey Lane, Walnut Creek, CA 94597
  - Orinda Water Treatment Plant, 190 Camino Pablo, Orinda, CA 94562
  - San Pablo Water Treatment Plant, 300 Berkeley Park Blvd, Kensington, CA 94707
  - Sobrante Water Treatment Plant, 5500 Amend Road, El Sobrante, CA 94803
  - Walnut Creek Water Treatment Plant, 2201 Larkey Lane, Walnut Creek, CA 94506

The routine maintenance activities include: trimming of trees and vegetation; removal of fallen and dead trees, trash, debris, and invasive non-native plants; in addition to culvert clearing of sediment and debris. Repair and replacement of existing culverts may also be conducted as necessary.

### **Justification**

Routine activities are required to maintain the natural flow and capacity of creek channels, in addition to protecting the structural and functional integrity of existing structures.

The project meets the following CEQA Categorical Exemption guideline definitions:

- Maintenance of existing landscaping, native growth, and water supply reservoirs - Section 15301(h)
- Replacement and/or reconstruction of existing facilities, Sections 15301(c), 15302(c)
- Minor grading and/or trenching and backfilling, Section 15304(a)(f)

### **Permits**

A Lake and Streambed Alteration Agreement is required by the California Department of Fish and Wildlife, Bay Delta Region.

### **Schedule**

Noise and activities will be limited to weekdays with standard business hours of 8:00 a.m. to 4:00 p.m.

## **Routine Maintenance Activities for Water Operations and Material Distribution Facilities Project**

### **Operation Impacts**

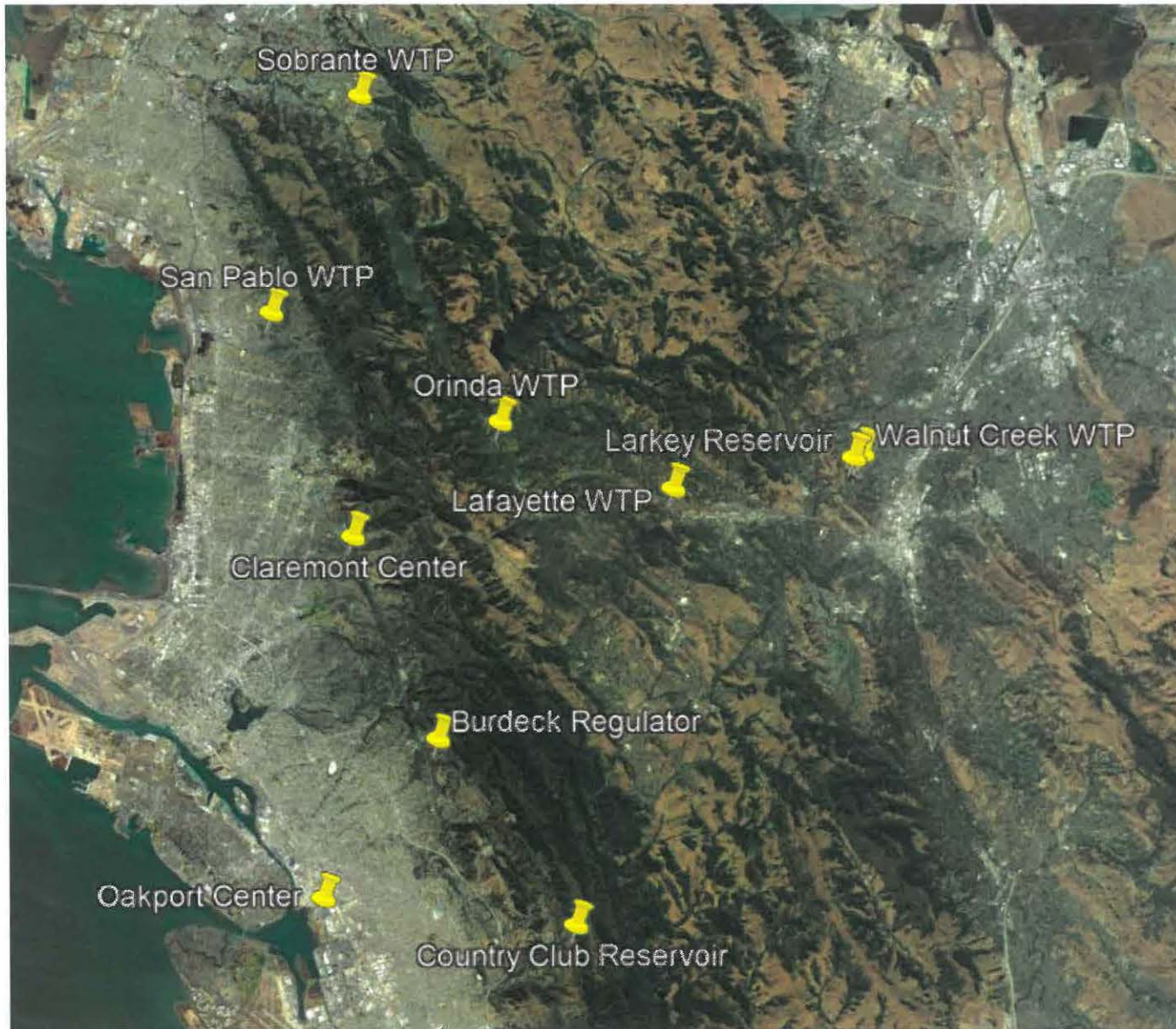
The project can potentially impact adjacent properties where equipment staging and use, in addition to foot traffic, may create temporary noise and loss of privacy.

### **Public and Environmental Considerations**

The proposed routine maintenance activities may generate temporary noise and dust with use of equipment during vegetation clearing, excavation, and material transportation. Work will be limited to weekdays and standard work hours with implementation of additional site specific best management practices as necessary. Temporary parking restrictions may occur if equipment staging is required on a public right-of-way.



## Aerial Map – Location of EBMUD Water Operations and Material Distribution Facilities



Oakport Center - Oakport Material Distribution Center, WTP - Water Treatment Plant



Burdeck Regulator





## Claremont Center



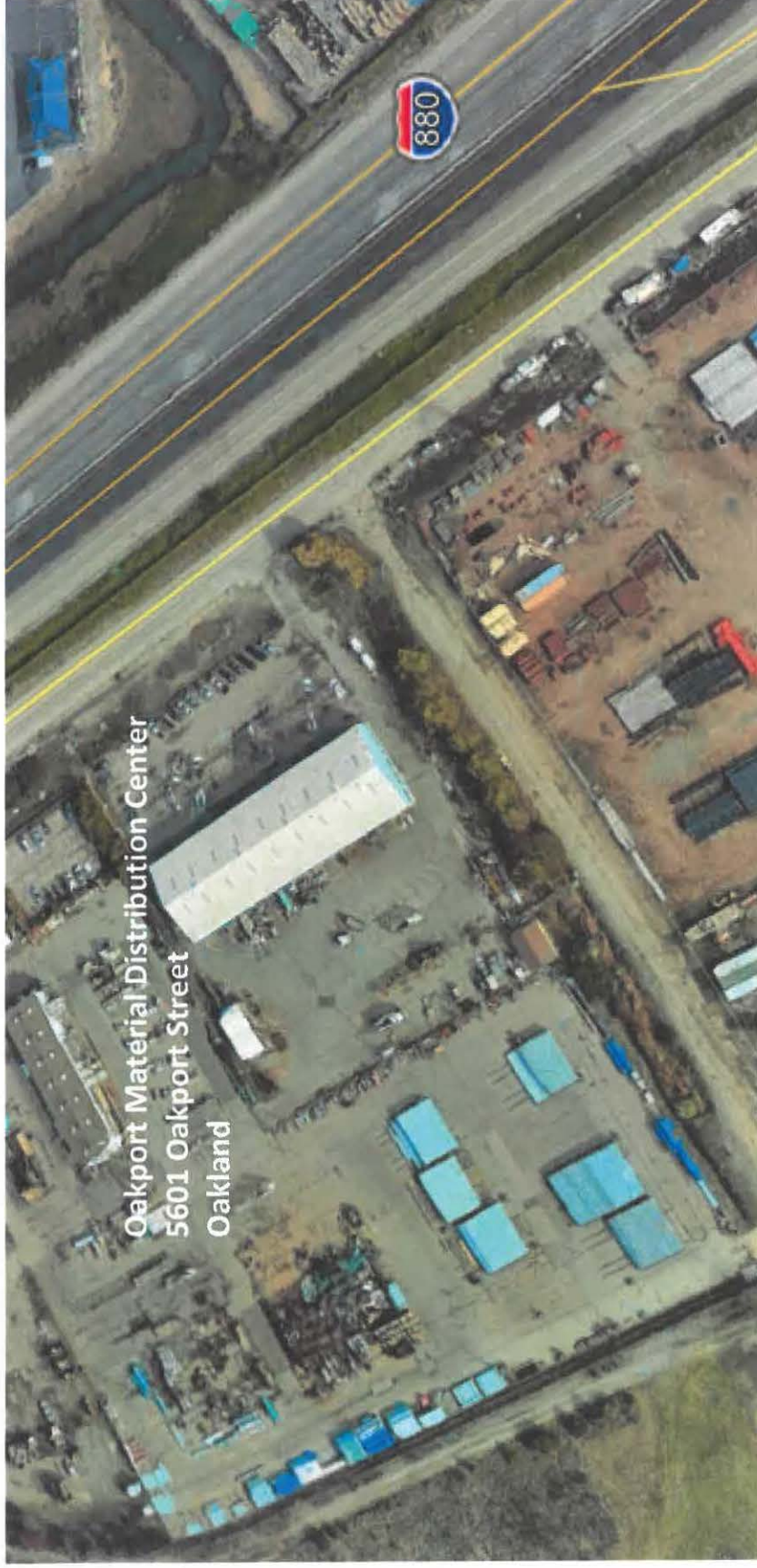
Claremont Center  
44 Roble Court  
Berkeley, CA 94705



## Country Club Reservoir



## Oakport Material Distribution Center





Lafayette Water Treatment Plant



Lafayette Water Treatment Plant  
3848 Mt. Diablo Blvd.  
Lafayette



Larkey Reservoir





## Orinda Water Treatment Plant



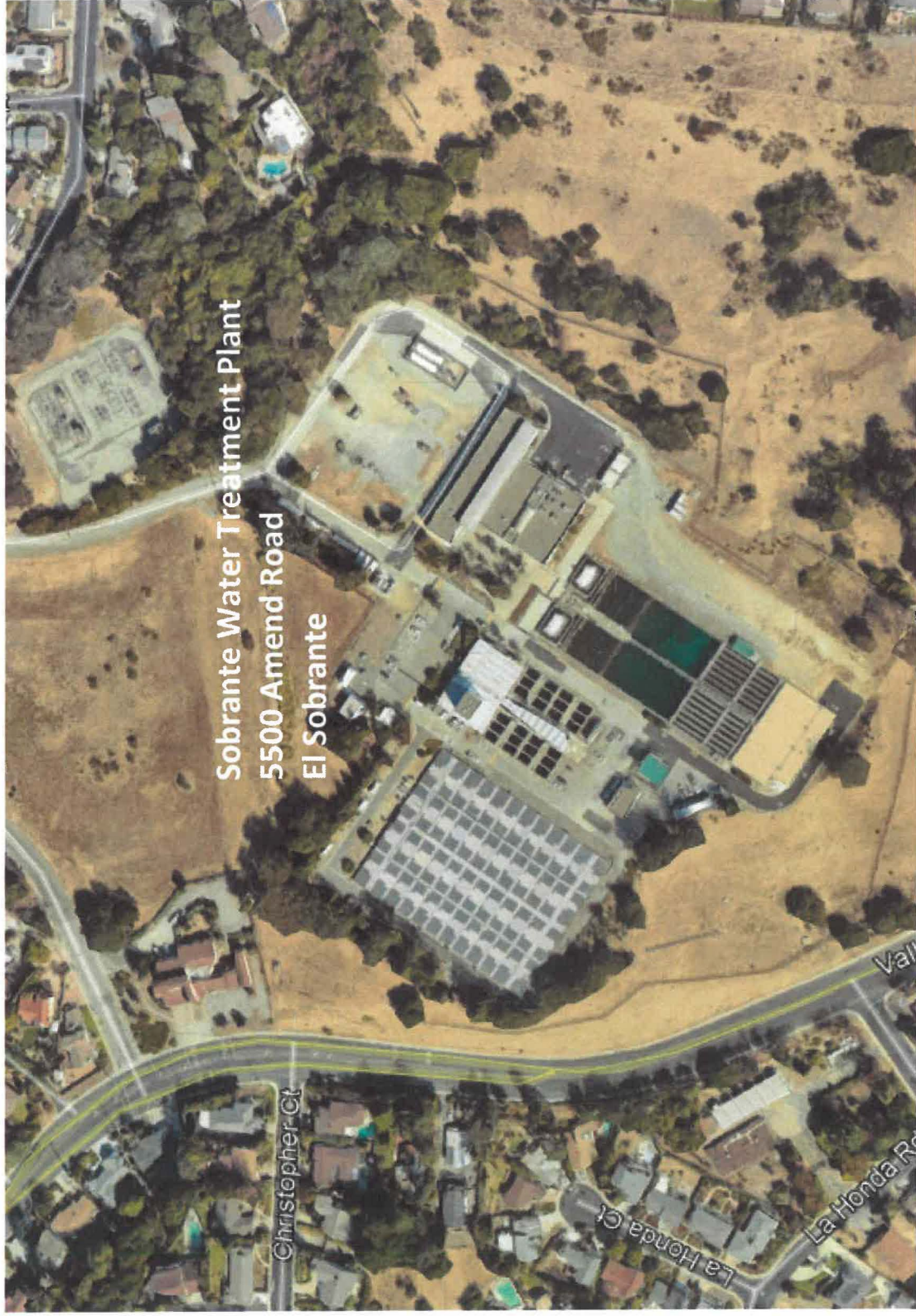


## San Pablo Water Treatment Plant





## Sobrante Water Treatment Plant





# Walnut Creek Water Treatment Plant

