

Water Supply Update

Board of Directors Meeting

March 24, 2020

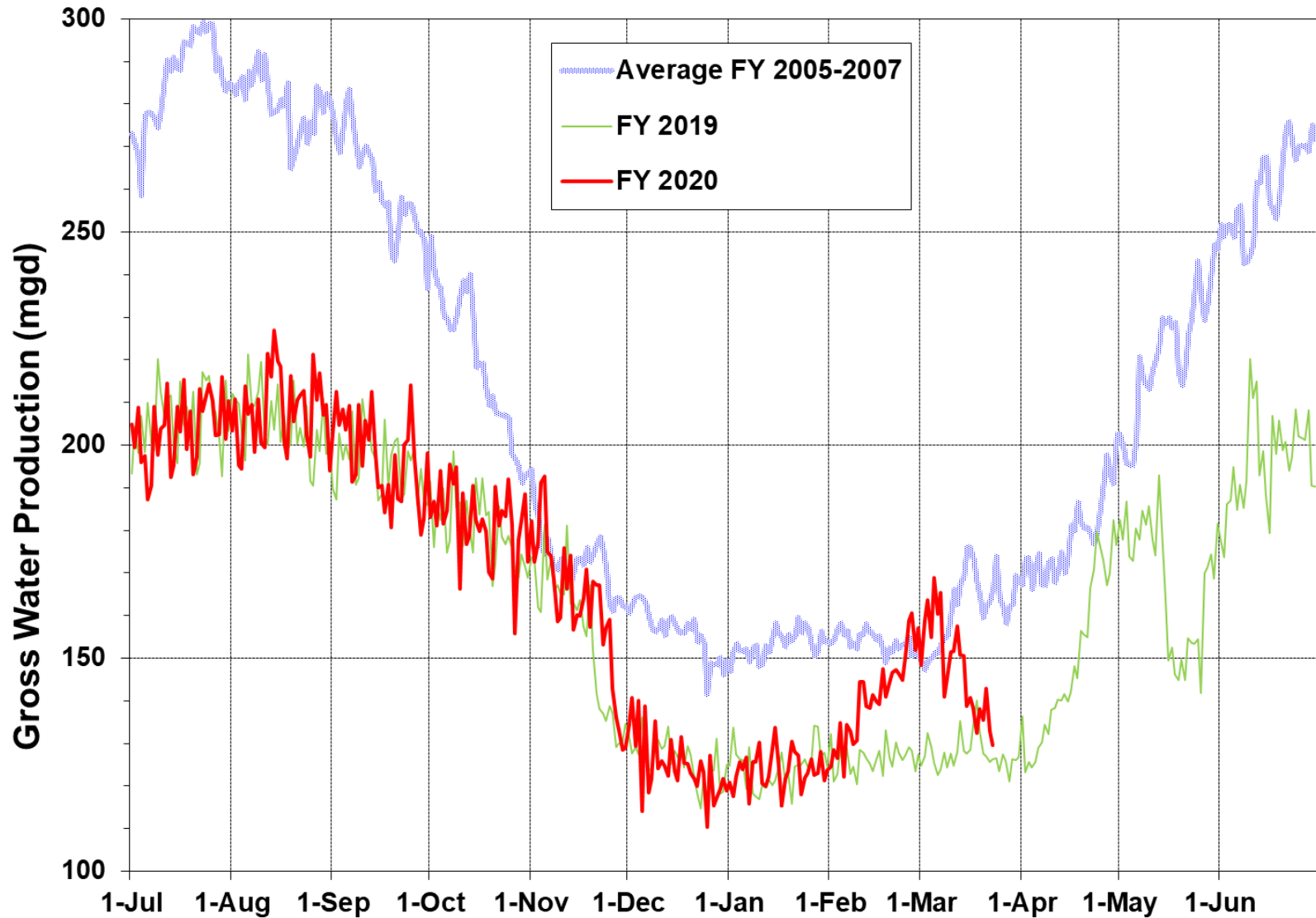
Water Supply Briefing

- Current Water Supply
- California Water Supply
- Water Supply Projections



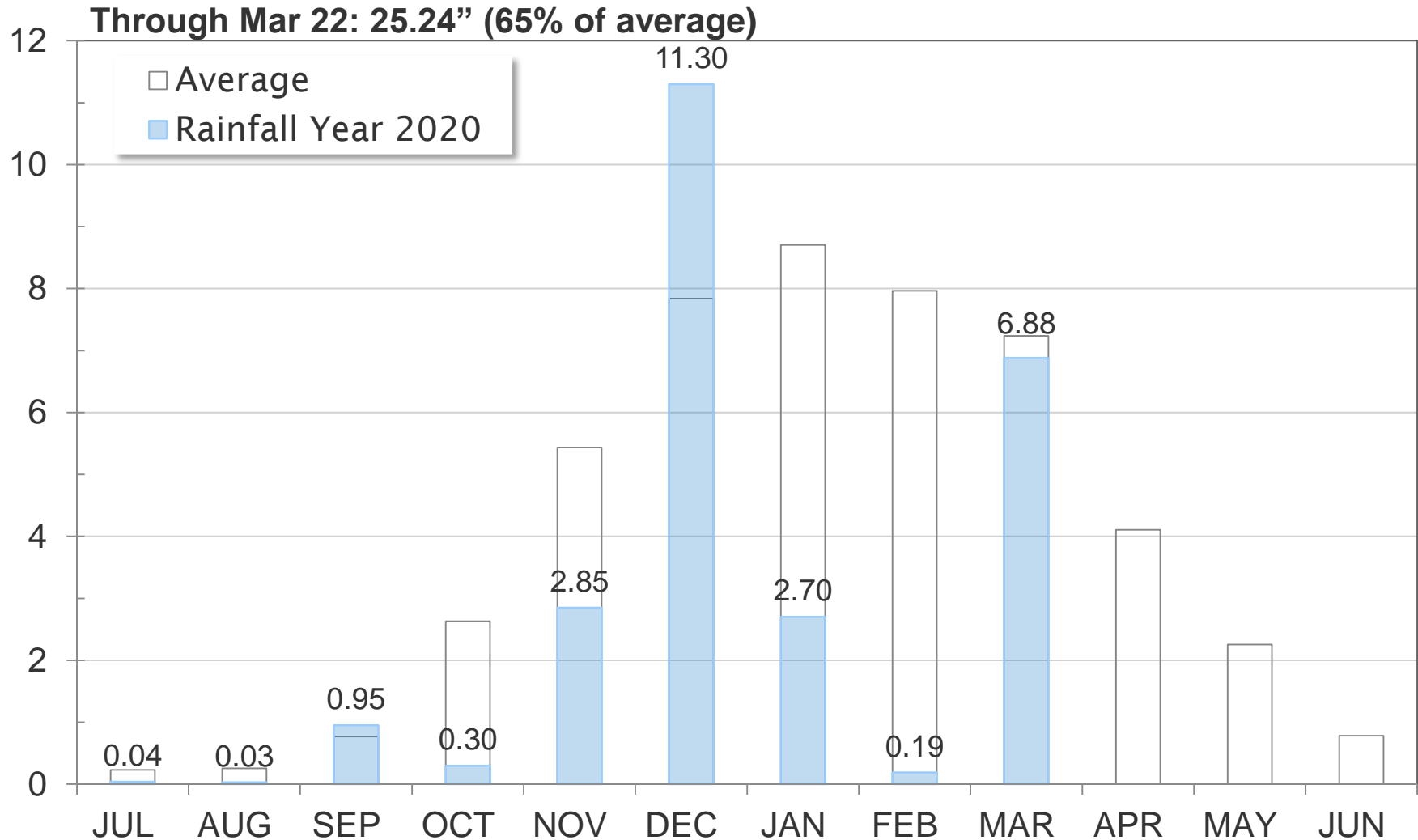
Current Water Supply

Gross Water Production



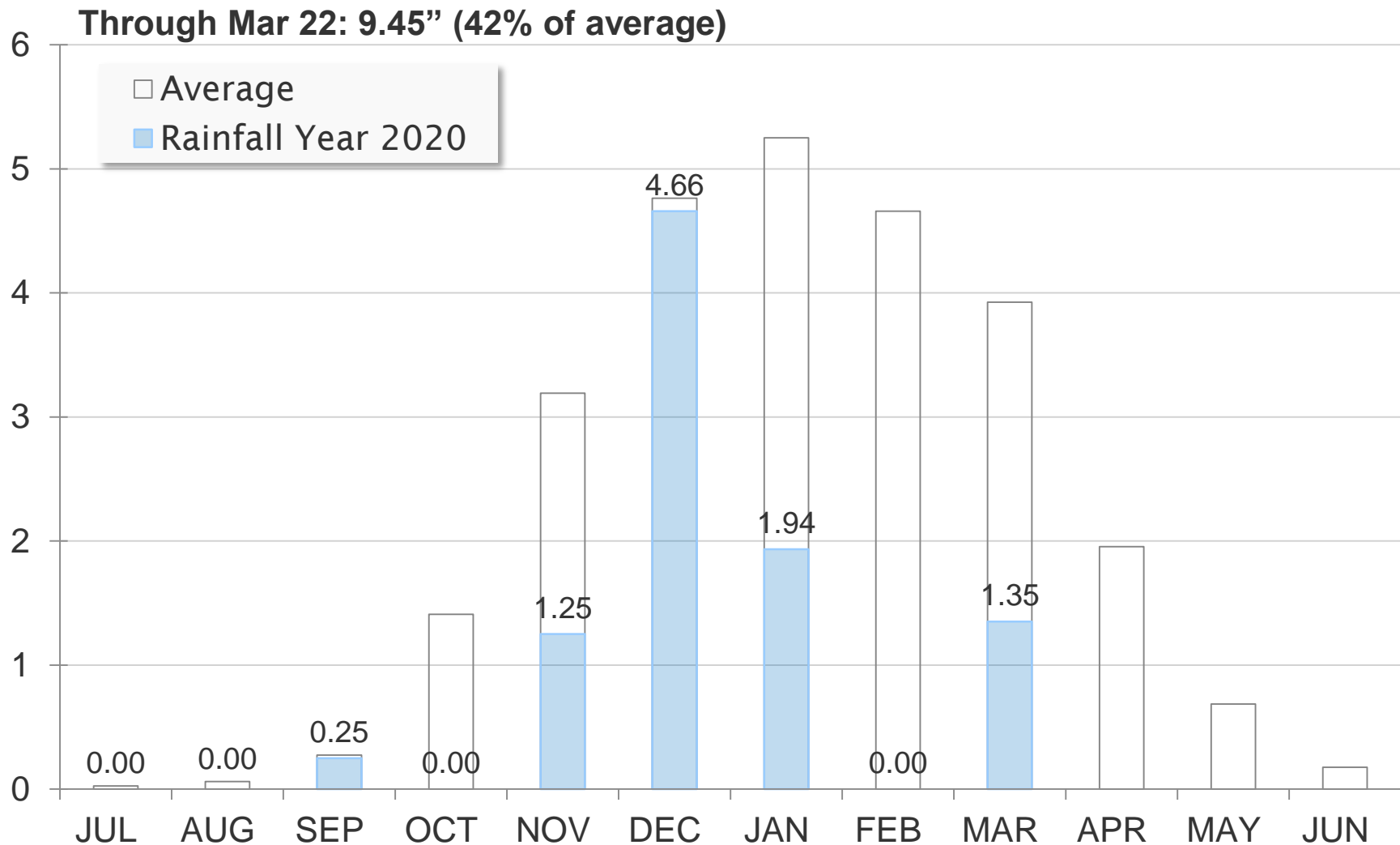
Current Water Supply

Mokelumne Precipitation



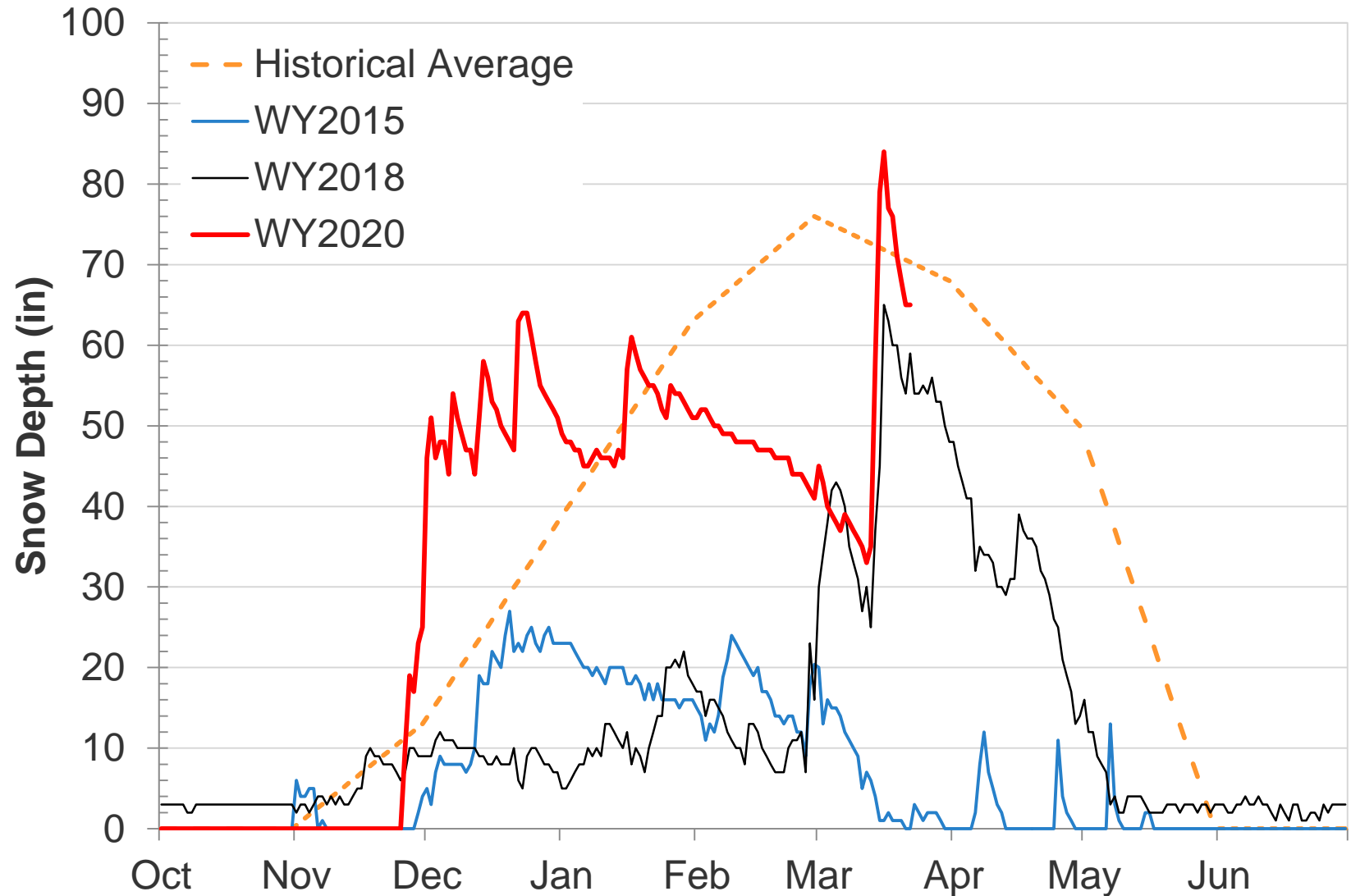
Current Water Supply

East Bay Precipitation



Current Water Supply

Caples Lake Snow Depth



Current Water Supply

Snow



As of Mar. 22, 2020	Cumulative Precipitation	% of Average
Caples Lake Snow Depth	65"	92%
Caples Lake Snow Water Content	18.73"	68%

Current Water Supply

Reservoir Storage



As of 3/22/2020	Current Storage	Percent of Average	Percent of Capacity
Pardee	187,610 AF	101%	92%
Camanche	275,270 AF	94%	66%
East Bay	130,580 AF	95%	87%
Total System	593,460 AF	96%	77%

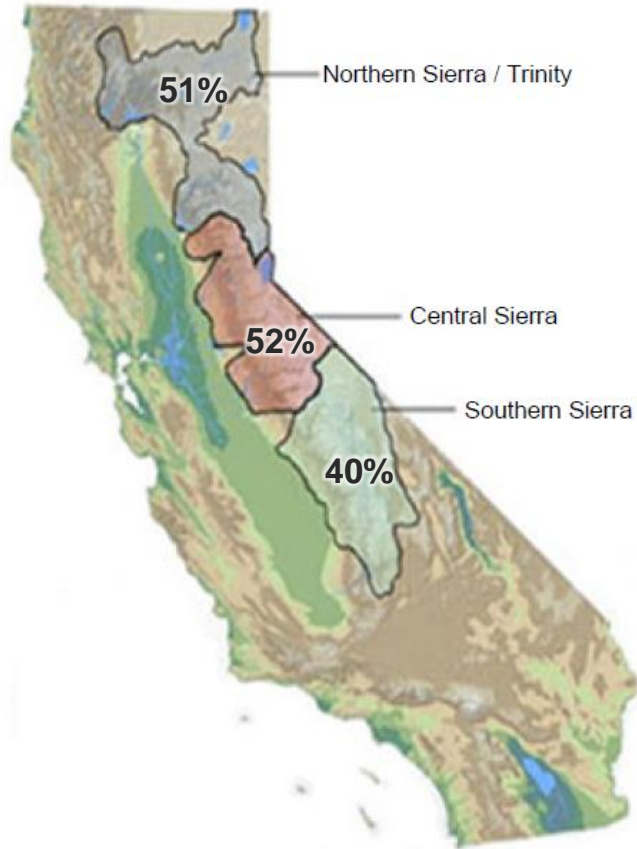
California Water Supply

Automated Sensor Snow Water Equivalents



Data for: 23-Mar-2020

% Normal for this Date



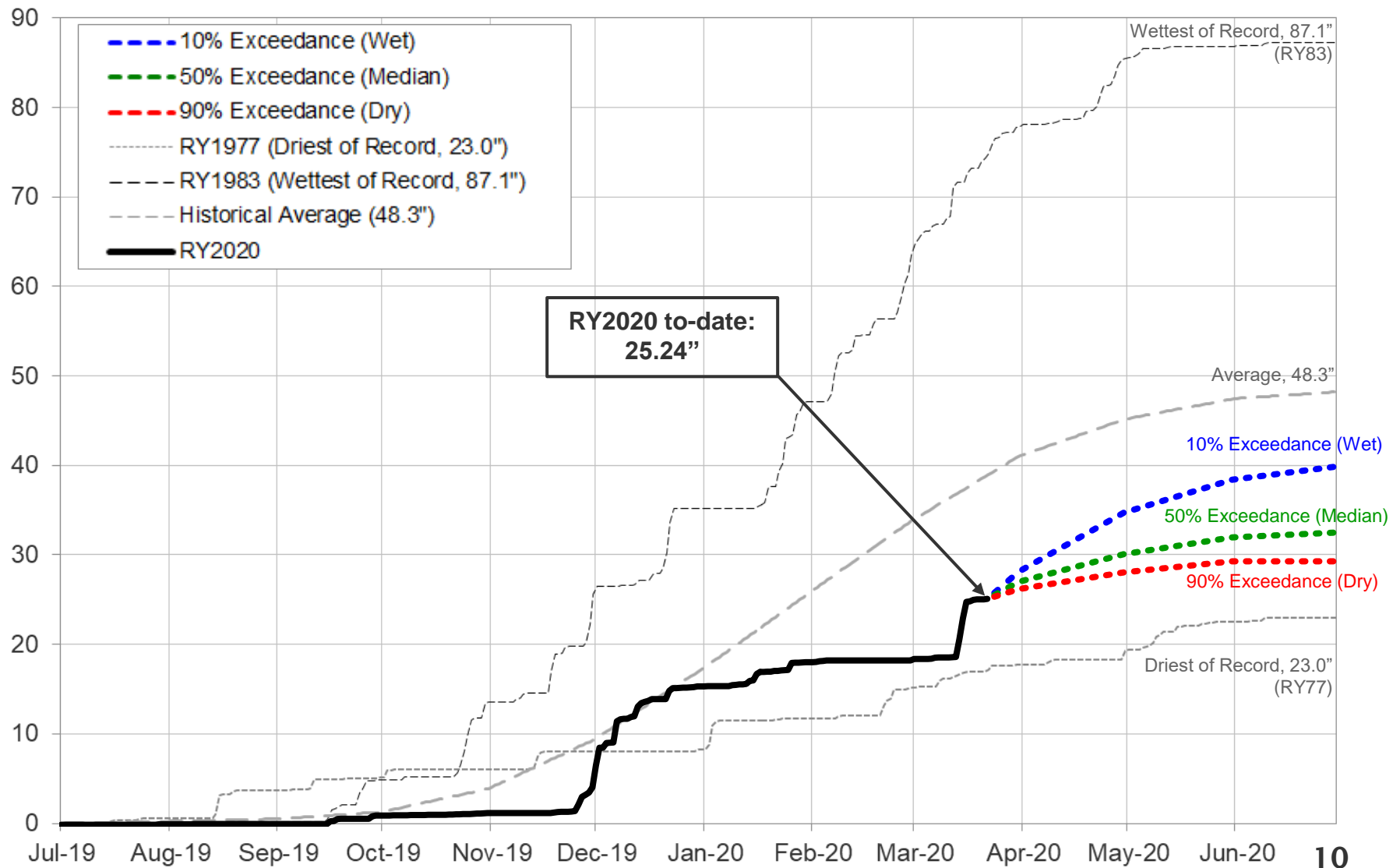
Caples Lake Snow Water Content

Year	% of Normal on March 22
2018	48%
2019	203%
2020	68%

Statewide Average: 49%

Water Supply Projections

Mokelumne Precipitation Rainfall Year 2020

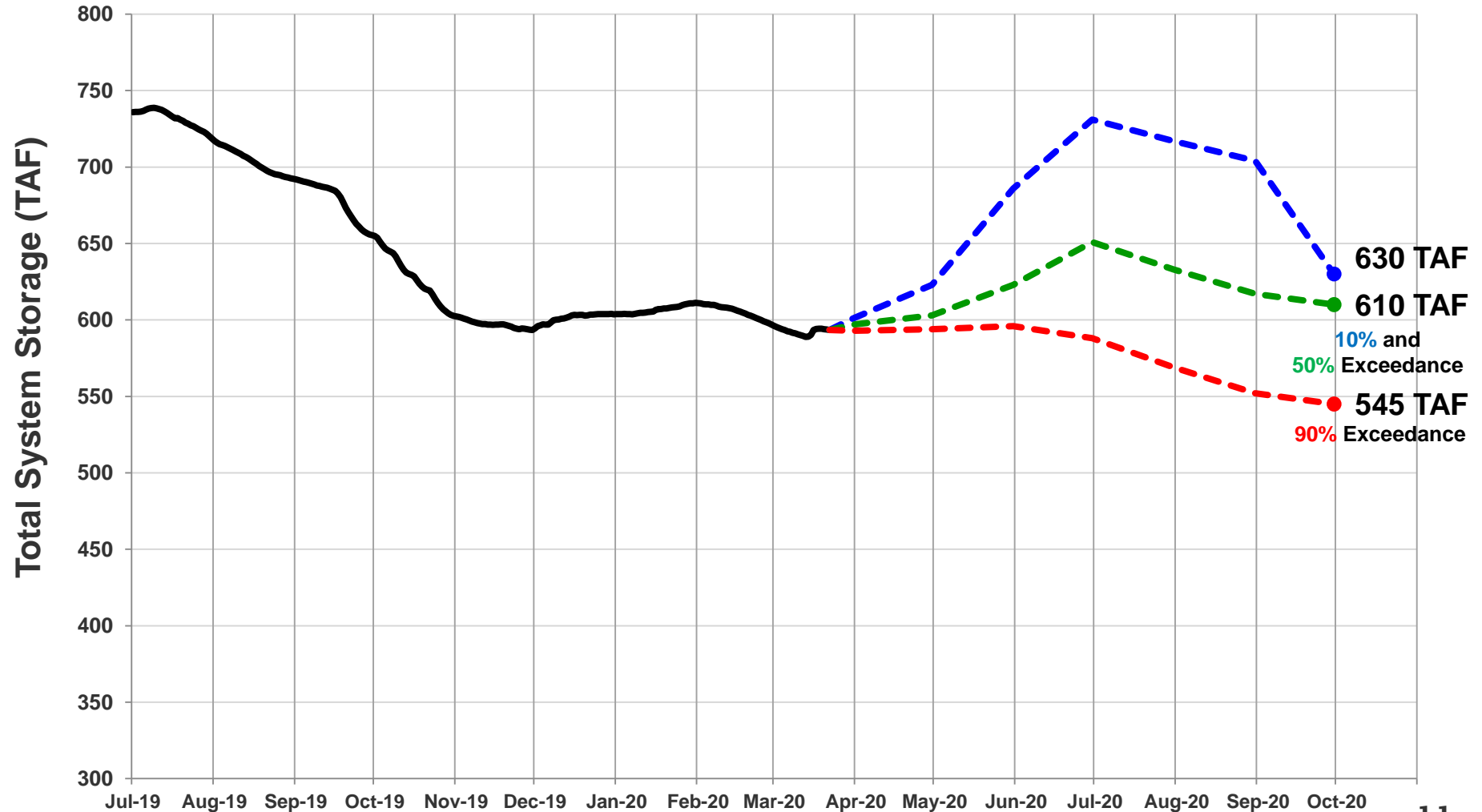


Water Supply Projections

Projected 2020 EBMUD Total System Storage



Total System Storage WY2020



Questions ?



WATER SUPPLY ENGINEERING DAILY REPORT

Monday, March 23, 2020

RESERVOIR STORAGE AND ELEVATION

	<u>WATER SURFACE</u>		<u>STORAGE</u>		<u>MAXIMUM CAPACITY</u>			
	Elevation				Elevation	Storage	Release	Spill
	n	+Gain		+Gain				
<u>MOKELUMNE</u>	<u>Feet</u>	<u>-Loss</u>	<u>Ac-Ft</u>	<u>-Loss</u>	<u>Feet</u>	<u>Ac-Ft</u>	<u>Cfs</u>	<u>Cfs</u>
Pardee	560.17	-0.03	187550	-60	567.65	203795	239	0
Camanche	214.66	-0.04	275020	-250	235.5	417120	330	0
<u>EAST BAY</u>								
Briones	570.72	-0.01	55210	-10	576.14	58960	0	0
Chabot	223.65	-0.01	9160	0	227.25	10350	0	0
Lafayette	437.78	-0.01	2920	0	449.16	4250	0	0
San Pablo	304.45	0.01	30620	0	313.68	37915	0	0
Upper San Leandro	451.4	0	<u>32660</u>	<u>0</u>	459.98	<u>38905</u>	0	0
<u>Total East Bay Res.</u>			<u>130570</u>	<u>-10</u>		<u>150380</u>		
TOTAL SYSTEM STORAGE			593140	-320		771295		

DISTRIBUTION SYSTEM			MOKELUMNE SYSTEM		
<u>DISTRIBUTION RESERVOIRS</u>			<u>AQUEDUCT DELIVERIES</u>		
	Storage MG	Operating Capacity		MG	Flow Conditions
Today	317	720	Line 1	37.4	GRAVITY
Total Previous Day	<u>316</u>		Line 2	49.1	GRAVITY
Total Change	1		Line 3	<u>47.4</u>	<u>THROTTLE</u>
			TOTAL	133.9	207 Cfs
<u>WATER PRODUCTION</u>	Million	Capacity	<u>FSCC to MOK AQUEDUCTS (Measured at Brandt), MG</u>		
<u>AND DEMAND</u>	<u>Gallons</u>	<u>MGD</u>	Mok 1	0	
Lafayette WTP	0	25	Mok 2	<u>0</u>	
Orinda WTP	107	190		0 MG	
San Pablo WTP	0	30	<u>RIVER FLOWS AND RELEASES</u>		<u>Cfs</u>
Sobrante WTP	0	50	Mokelumne River Natural Flow		660
Upper San Leandro WTP	0	45	Pardee Reservoir Inflow		420
Walnut Creek WTP	25.3	90	Pardee Release to Camanche Res.		239
<u>TOTAL SURFACE PRODUCTION</u>	132.3	430	Pardee Release to JVID		0
Miscellaneous(Estimated)	0.4		Camanche Release to Mokel. River		330
<u>TOTAL WATER PRODUCTION</u>	<u>132.7</u>		<u>PG&E CO. STORAGE (Acre-feet)</u>		
Change in Distribution System	1			Storage	Maximum
Wash Water from Distribution Sys.	0.4		Old Reservoirs	<u>Change</u>	<u>Capacity</u>
<u>SYSTEM DEMAND</u>	131.3		Salt Springs Res.	5034	26560
East-of-Hills Demand	28.4		Lower Bear Res.	21422	335
West-of-Hills Demand	102.9		Total	<u>14653</u>	<u>177</u>
				41109	477
					220442

RAW WATER TRANSMISSION			PRECIPITATION (Inches)				
	<u>INPUT</u>	<u>DRAFT</u>	<u>THIS YEAR</u>		<u>AVERAGE YEAR</u>		
Briones Res.	0	0	<u>STATION</u>	<u>Today</u>	<u>This Month</u>	<u>Season to-Date</u>	<u>Season to-Date</u>
San Pablo Res.	5	0					
U. San Leandro Res.	0	0	USL WTP	0	1.45	9.87	21.53
TOTAL	5	0	Orinda WTP	0	2.14	13.14	27.3
<u>REMARKS</u>			Lafayette Reservoir	0	1.25	9.02	24.14
WID Canal Diversion = 42 cfs			Walnut Creek WTP	0	1.29	10.4	20.02
Mokelumne River below WID = 228 cfs			Camp Pardee	0	3.61	12.89	17.56
			Salt Springs P.H.	0.18	7.79	25.89	36.67
							45.51
			<u>CAPLES LAKE (7,830 FT) DATA</u>				
PG&E data as of 4:00 pm previous date.				<u>Today</u>	<u>Average</u>		
All other data as of midnight.			Snow Depth	64 Inches	70 Inches		
WTP capacities are sustainable rates.			Water Content	19.0 Inches	27.7 Inches		

EAST BAY MUNICIPAL UTILITY DISTRICT