

RAILROAD PROPERTY ACQUISITION

Public Hearing

March 24, 2020

New Service Center to Support Construction Activities



- Purchased Willow Street Property as the new Service Center site
- Purchase made based on RR Property is also for sale
- An agreement negotiated with Union Pacific but not with BNSF
- RR Property is essential to the site development
- Condemnation is the only alternative

Initiation of Eminent Domain Proceedings

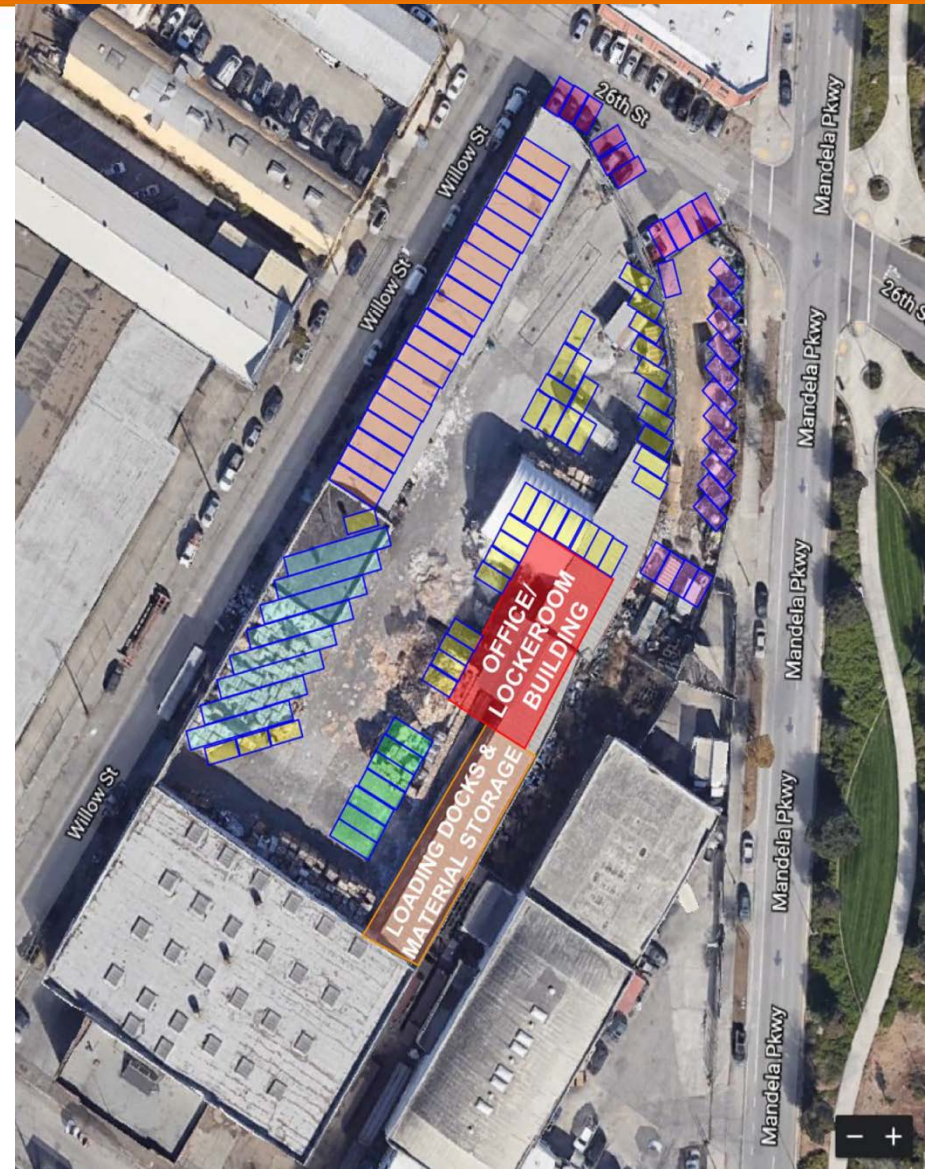


- Conduct a public hearing to allow the property owner to address the Board
- Adopt a Resolution of Necessity
- To adopt a Resolution of Necessity, the Board must make four findings:
 - The project is necessary
 - The property rights are necessary
 - The project will accomplish the least private injury and the most public good
 - Offer of just compensation has been made

Project Necessity – The New Service Center is Critical



- Support the District's planned and unplanned construction activities
- Significantly reduce the overall usable area without the RR Property
- Impact safe turning radius of large vehicles
- Improve overall safety for employees



The Property Right is Necessary



- The RR Property is essential to build a Service Center with the most effective use
 - Usability of existing onsite structures
 - Maximize equipment and material storage
- As unused land, the RR Property would pose security concerns

Accomplish Least Private Injury and Most Public Good



- Service Center provides significant benefit to District customers
- RR Property is vacant, and unimproved
- Cannot be developed or used for any other purpose
- Have no impact on railroad operations
- Offered just compensation
 - UP agreed to sale, BNSF has not



Next Steps



- Adopt a Resolution of Necessity authorizing staff to file eminent domain actions

QUESTIONS?

Coronavirus Update

Board of Directors

March 24, 2020

COVID-19 Cases

March 9



- 129 confirmed cases in California
- 79 confirmed cases in the Bay Area

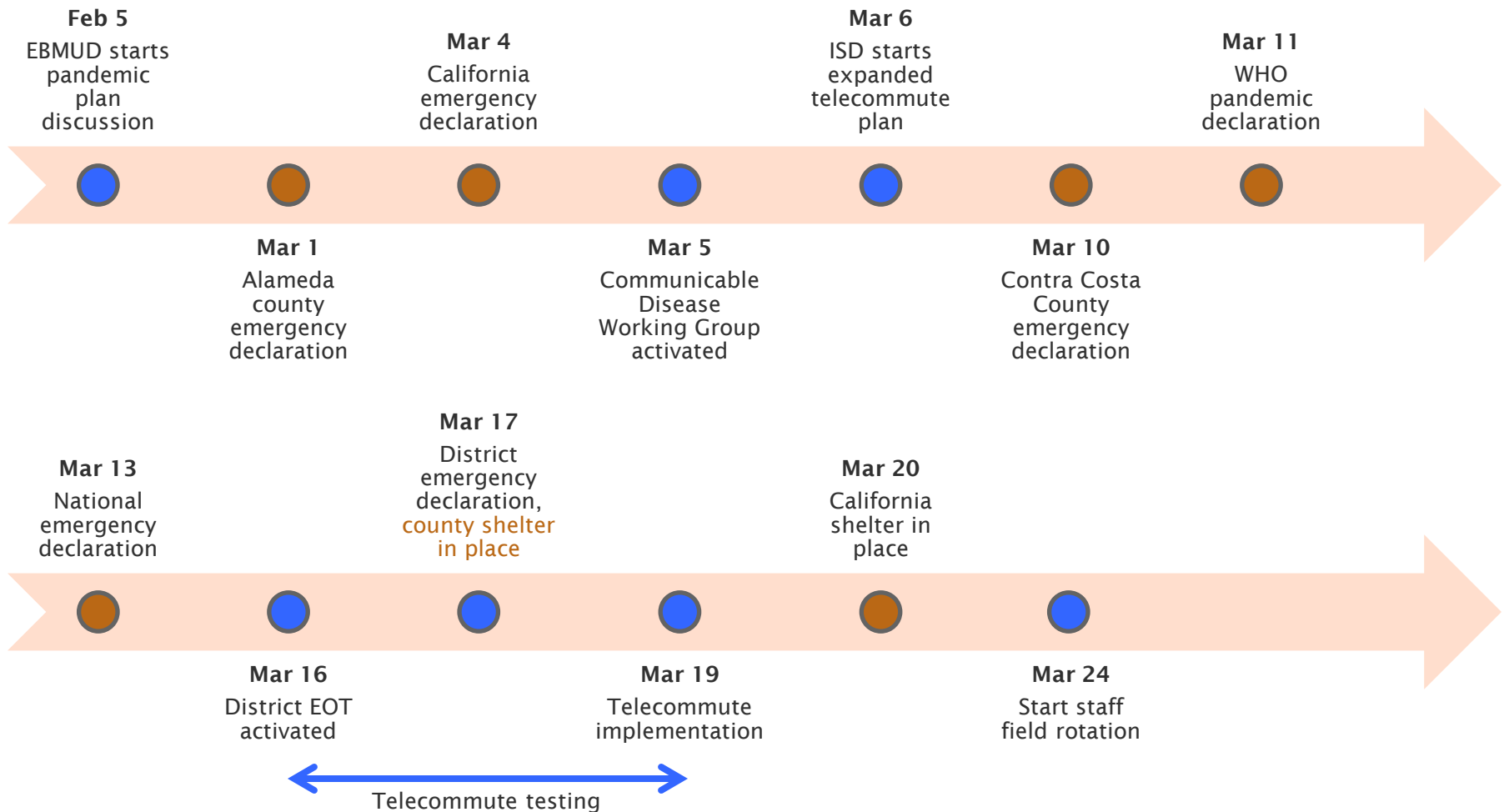
March 22



Source: SF Chronicle

- 1,842 confirmed cases in California
- 772 confirmed cases in the Bay Area

Timeline of Events



Communicable Disease Emergency Response Plan



District Level	Impact to the District	Example Actions
1	No impact	Routine awareness, preparedness, training
2	General impact to the service area	Increased awareness, communication, progressive cleaning procedures
3	Moderate impact to the District	EOT activity, communication to employees and customers, increased cleaning procedures, some restrictions
4	Severe impact to the District	Shutting buildings, restricting access, customer service impacts, additional restrictions

- March 9: District Level 2
- March 16: District Level 3
- March 18: District Level 4

- External
 - Administration Building office open to public by appointment only
 - San Pablo and Lafayette Reservoirs closed
 - Pardee and Camanche recreation areas closed
 - Camanche Hills Hunting Preserve closed
 - Mokelumne River Day Use area closed

- Internal
 - Restrictions
 - Travel and conferences
 - Non-essential public events
 - Other events
 - Cancelled MAST training
- Supply Chain
 - No impact to critical vendors
 - Sanitation supplies limited

District Actions

Coordination and Resources



- Emergency Operations Team
- Update policies and procedures
- Communication
 - Regular communication with staff
 - Posted information on social media
- Additional parking near the Administration Building

District Actions

Customer Water Service



- Suspended water service shut-offs due to non-payment effective March 12
- Restoring water service for services shut-off due to non-payment
 - 500 since January 2020
 - 76 services remaining
 - Sent letters and phone calls. Will perform field checks.

District Actions

Customer Water Service



- Issuing payment plans/extensions
- Waiving late payment fees
- Waiving field service charges

Shelter In Place Guidelines



- Purpose of shelter in place
 - “Flatten the curve”
 - Slow community spread
 - Test and isolate
- Alameda and Contra Costa County order excludes
 - Work necessary for the operations and maintenance of “Essential Infrastructure”
 - “Essential Activities” which includes work at an “Essential Business”

Shelter In Place Guidelines



- California shelter in place order
 - Excludes employees working in 16 critical infrastructure sectors
- Both orders also exclude
 - Public works construction
 - Housing construction
- District sent letter to vendors that support our operations

District Actions

Mitigation Measures



- Telecommuting
- Conducting remote meetings
- Geographic separation
- Physical separation
 - Staggering shifts and start times
 - Trailers
 - Field staff driving in separate vehicles and take-home vehicles
 - Field staff rotation/reduced maintenance activities
- Increased cleaning procedures
- Field and office sanitation supplies
- Education and information sharing

Telecommuting



- Preparation began March 6
- Testing from March 16 to 18
- Implementation started March 19
- Continue to setup employees – complete this week
- Status
 - 625 laptops issues
 - 500 employees can connect using VPN
 - 775 employees connect to Microsoft Team
 - 1,040 computers connected remotely March 23
 - 30 to 50 employees added each day (225 remaining)

Example Field Activities to Continue



- Water and wastewater operations
- Corrective maintenance (e.g., leak repair)
- Required preventative maintenance (e.g., instrument calibration)
- Construction (e.g., pipeline, applicant)
- Water quality sampling
- Regulatory reporting
- Vegetation management
- Support functions

Field Staff Rotation (example)



- 2 week rotation
- Example staff in reserve
 - Pipeline maintenance crews
 - Pipeline construction crews
 - Paving crews
 - Facility maintenance staff
 - Water treatment and distribution operators

Example Reduced Field Activities



- Lower priority preventative maintenance
- Non-critical work at water treatment plants that are offline
- Reduced construction activity (e.g., pipeline, paving, applicant)

Critical Business Functions



- Water treatment plant and distribution operations
- Wastewater treatment plant operations
- District laboratory analyses
- High priority corrective maintenance (e.g., leaks)
- Regulatory required sampling, maintenance, and reporting
- Payroll, benefits, and remittance
- Core IT functions (e.g., network, security)

Example Mitigation and Contingency Plans



- Leak repair
 - Geographic isolation
 - Physical distancing at yards
 - Pipeline Construction staff
 - Mutual Assistance
- Water treatment plant operation
 - Geographic isolation
 - Physical distancing at plants
 - Reserves
 - Retirees

District Paid Leave Options



- Use accrued leave balances
 - No restriction of which type of leave can be used
- Advance Leave Program (new)
 - 80 hours of sick leave
- Paid leave for field staff on rotation (reserve)
- HB 6201 (Family First Act)
 - Legal obligations with respect to providing leave to employees
 - Emergency Family & Medical Leave Expansion Act
 - Emergency Paid Sick Leave

- Employee day care
 - Survey employees
 - Develop plans
- Homeless
 - Outreach to cities
 - Coordinate response to support the homeless community

Newsom Administration Actions



- 3/11/20 – Policy on Mass Gatherings
- 3/12/20 – EO N-25-20; Misc. includes Brown Act waivers
- 3/12/20 – Statement on Disney Closing Parks
- 3/13/20 – EO N-26-20; Schools
- 3/16/20 – Urges legislature to act on budget bills SB 89 & SB 117
- 3/16/20 – EO N-28-20; Evictions
- 3/16/20 – EO N-27-20; Assistance to Elderly and Health Care Facilities
- 3/17/20 – Signs budget bills SB 89 & SB 117
- 3/17/20 – Requests Medi-Cal Waiver from Federal Government
- 3/17/20 – COVID-19 Guidance for K-12 Schools
- 3/18/20 – EO N-31-20; Vital Goods
- 3/18/20 – EO N-29-20; Safety Net & Bagley-Keene Act
- 3/18/20 – Announces www.covid19.ca.gov website

Newsom Admin. Actions Cont.



- 3/18/20 - EO N-30-20; Suspend Student Testing
- 3/18/20 - EO N-32-20; Suspend Restriction; Homeless Expenditures
- 3/18/20 - Letter; President; Request USNS Mercy Hosp. Ship to Port LA
- 3/19/20 - Letter; Congress Leaders; Additional Federal Assistance
- 3/19/20 - EO N-33-20; Statewide Shelter in Place
- 3/20/20 - Deploys National Guard; Food Distribution
- 3/20/20 - Neighbor-to-Neighbor; serve.ca.gov
- 3/20/20 - EO N-34-20; vote by mail, waive hearings; at-large elections
- 3/21/20 - EO N-35-20; omnibus, includes Brown Act waivers
- 3/21/20 - Directs funding to expand health care infrastructure
- 3/22/20 - Requests & Secures Presidential Major Disaster Declaration

Federal Actions



- 3/6/20 – President signs H.R. 6704; Supplemental appropriations bill #1
- 3/13/20 – National emergency; National Emergencies and Stafford Acts
- 3/18/20 - President signs HR 6201; Supplemental appropriations bill #2
- 3/22/20 - President approves Major Disaster Declaration for CA

Questions



Water Supply Update

Board of Directors Meeting

March 24, 2020

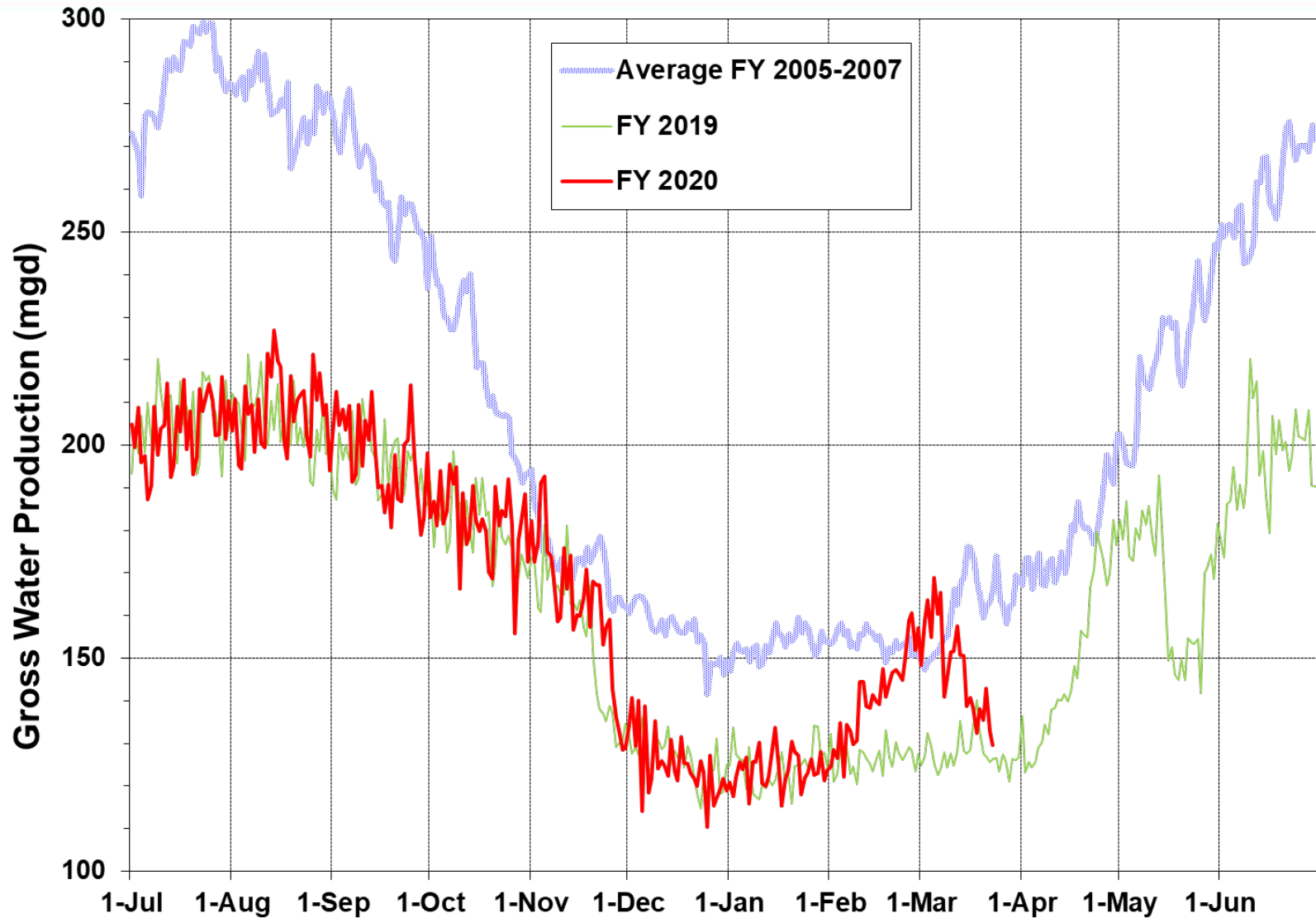
Water Supply Briefing

- Current Water Supply
- California Water Supply
- Water Supply Projections



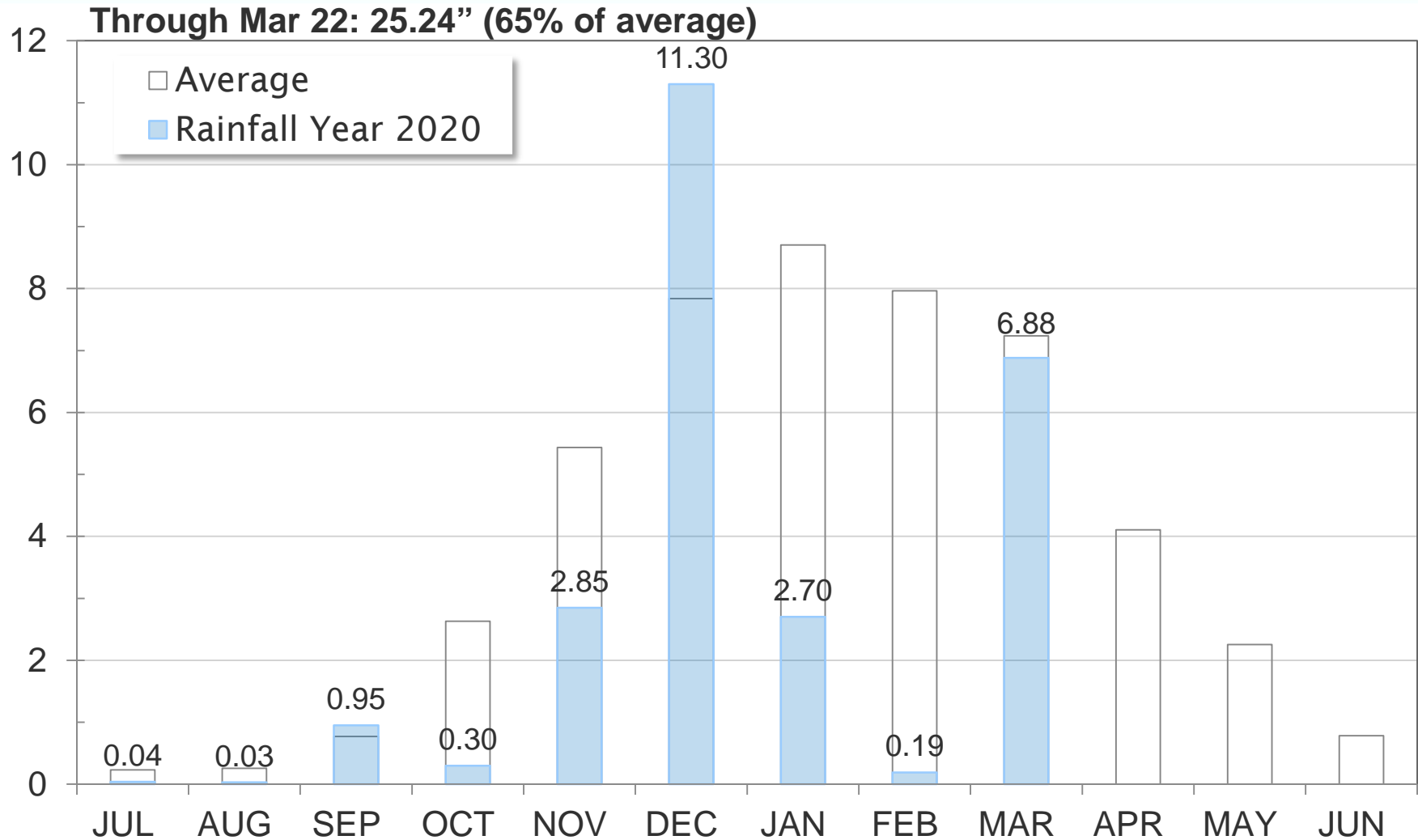
Current Water Supply

Gross Water Production



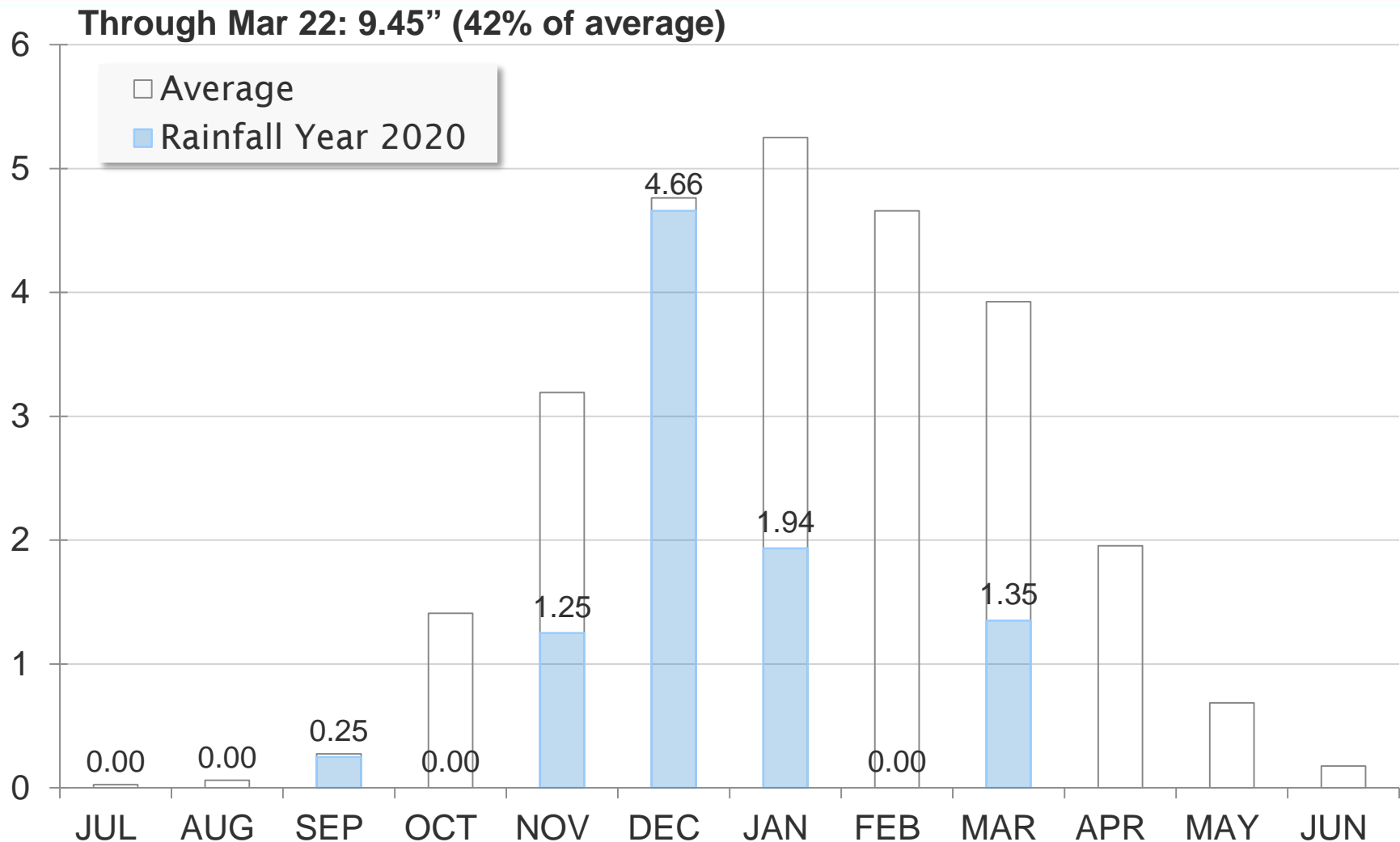
Current Water Supply

Mokelumne Precipitation



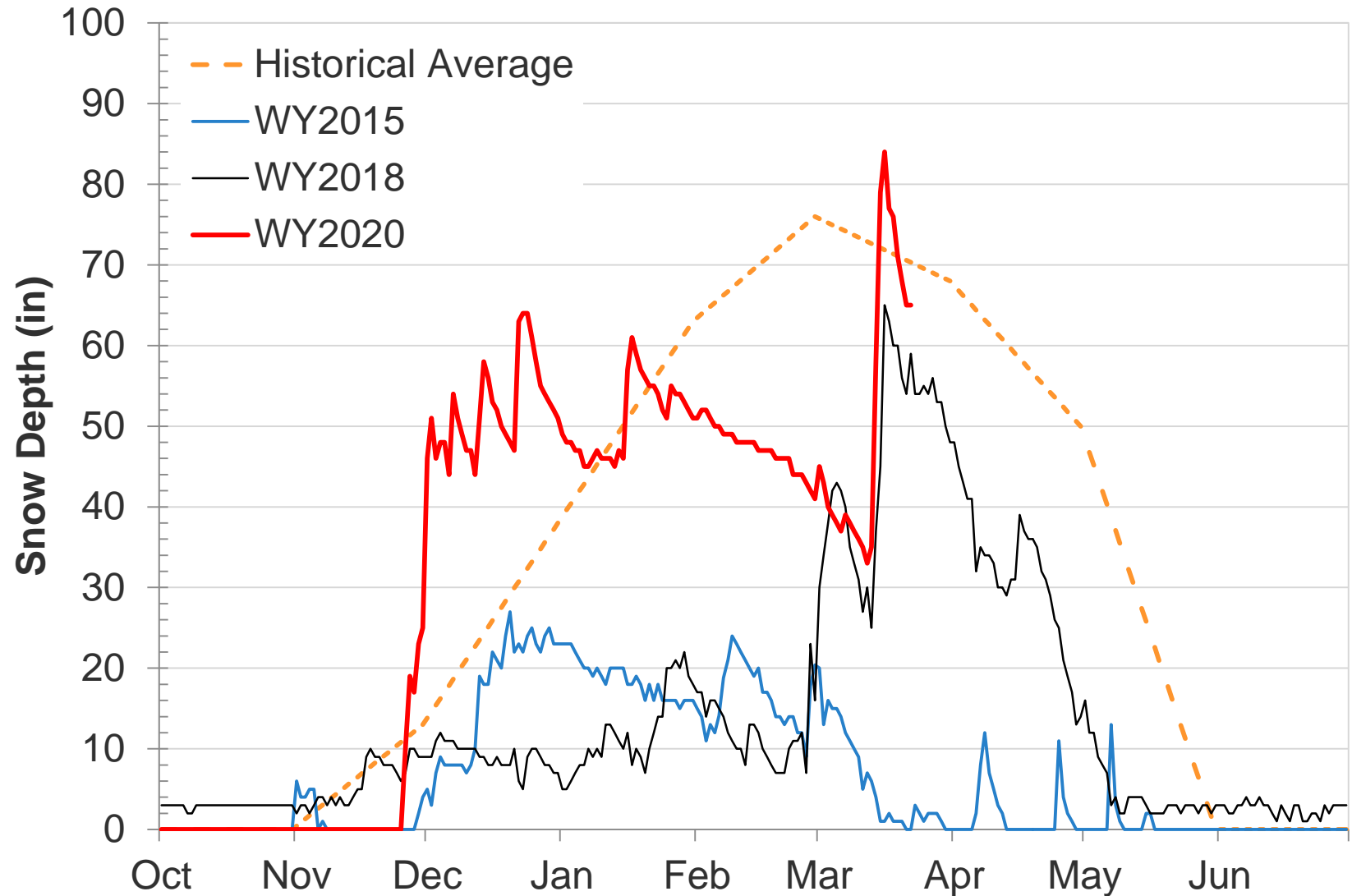
Current Water Supply

East Bay Precipitation



Current Water Supply

Caples Lake Snow Depth



Current Water Supply

Snow



As of Mar. 22, 2020	Cumulative Precipitation	% of Average
Caples Lake Snow Depth	65"	92%
Caples Lake Snow Water Content	18.73"	68%

Current Water Supply

Reservoir Storage



As of 3/22/2020	Current Storage	Percent of Average	Percent of Capacity
Pardee	187,610 AF	101%	92%
Camanche	275,270 AF	94%	66%
East Bay	130,580 AF	95%	87%
Total System	593,460 AF	96%	77%

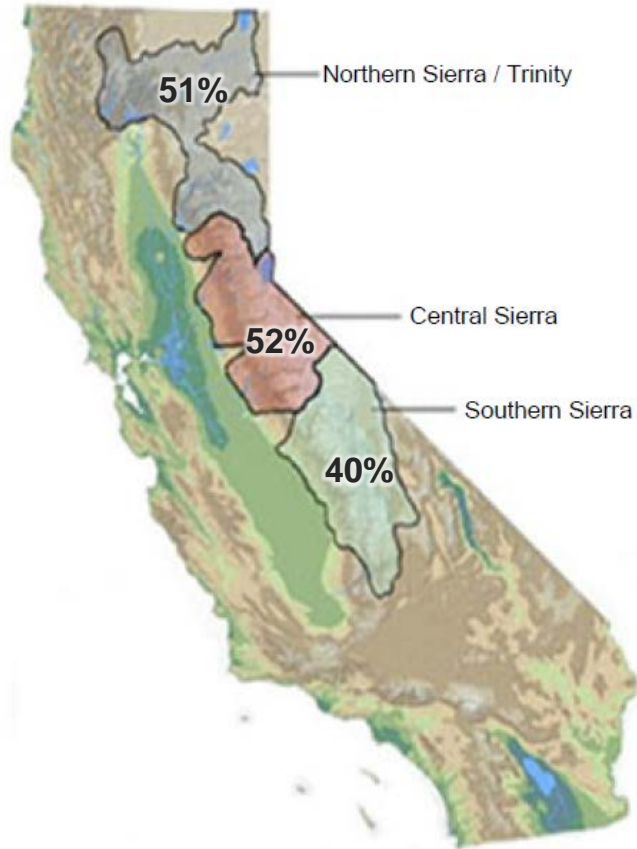
California Water Supply

Automated Sensor Snow Water Equivalents



Data for: 23-Mar-2020

% Normal for this Date

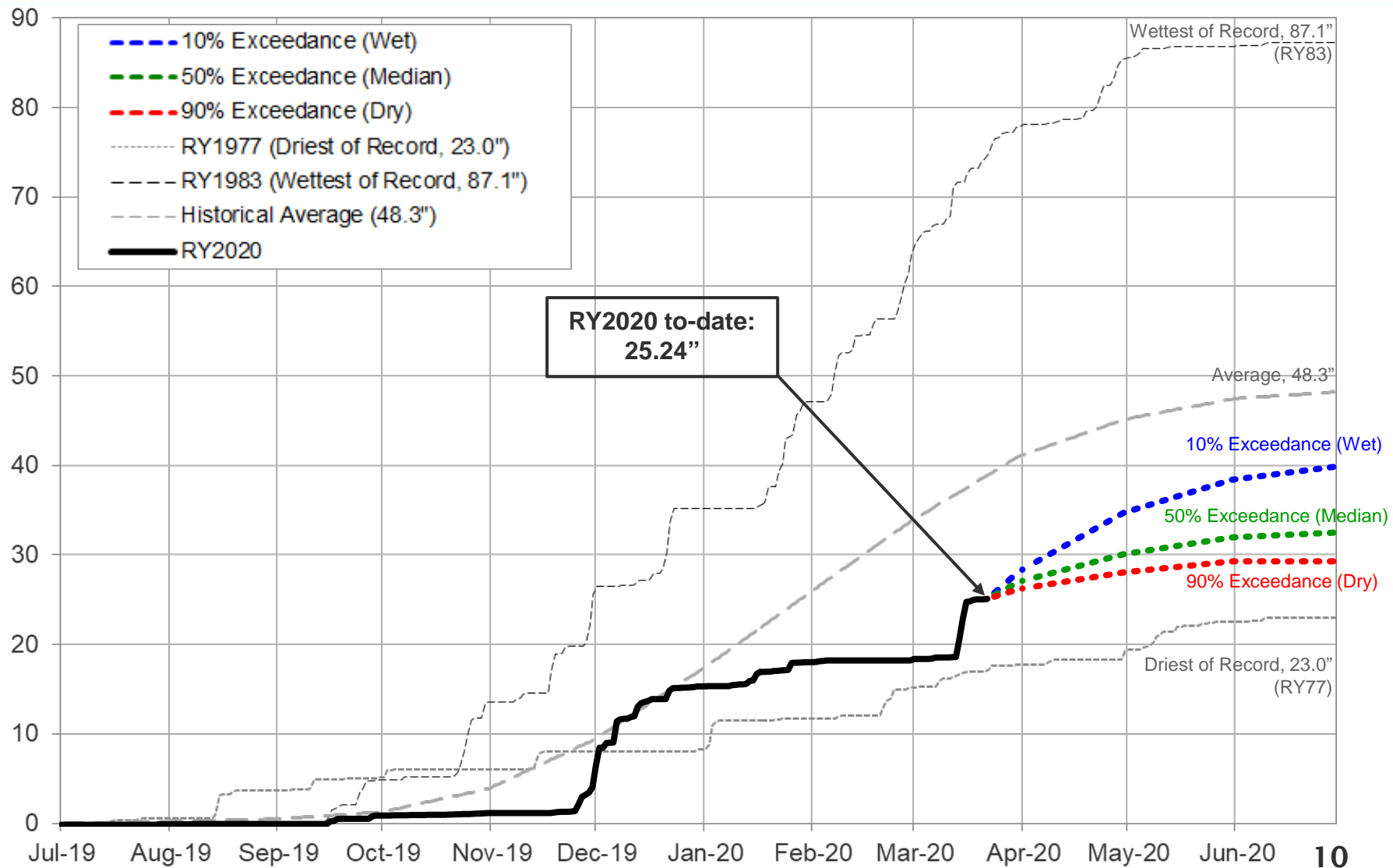


Caples Lake Snow Water Content

Year	% of Normal on March 22
2018	48%
2019	203%
2020	68%

Water Supply Projections

Mokelumne Precipitation Rainfall Year 2020

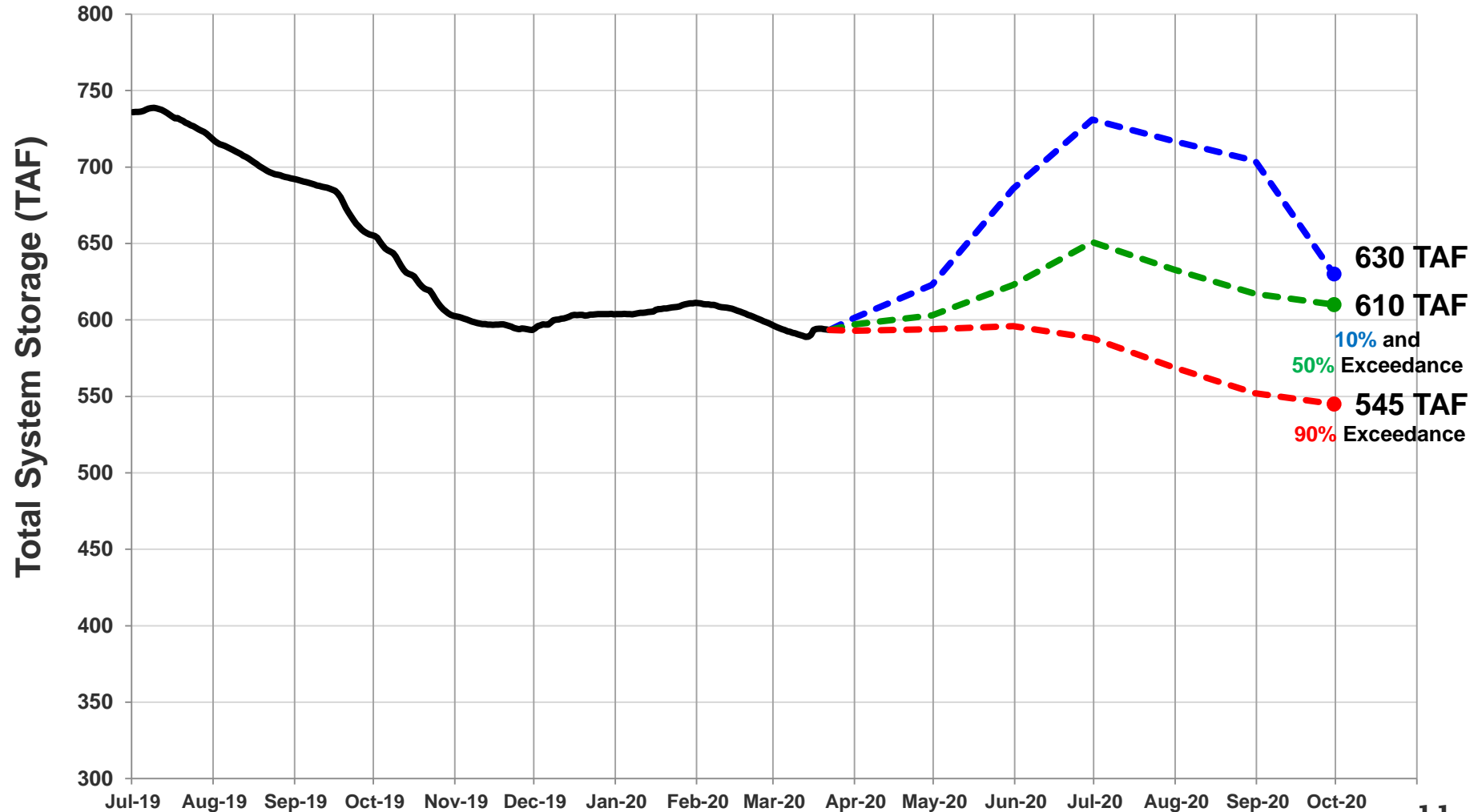


Water Supply Projections

Projected 2020 EBMUD Total System Storage



Total System Storage WY2020



Questions ?

