

Duffel Photovoltaic Renewable Energy Project Update and Final Mitigated Negative Declaration

Board of Directors Meeting

February 11, 2020

Project Overview and Objectives



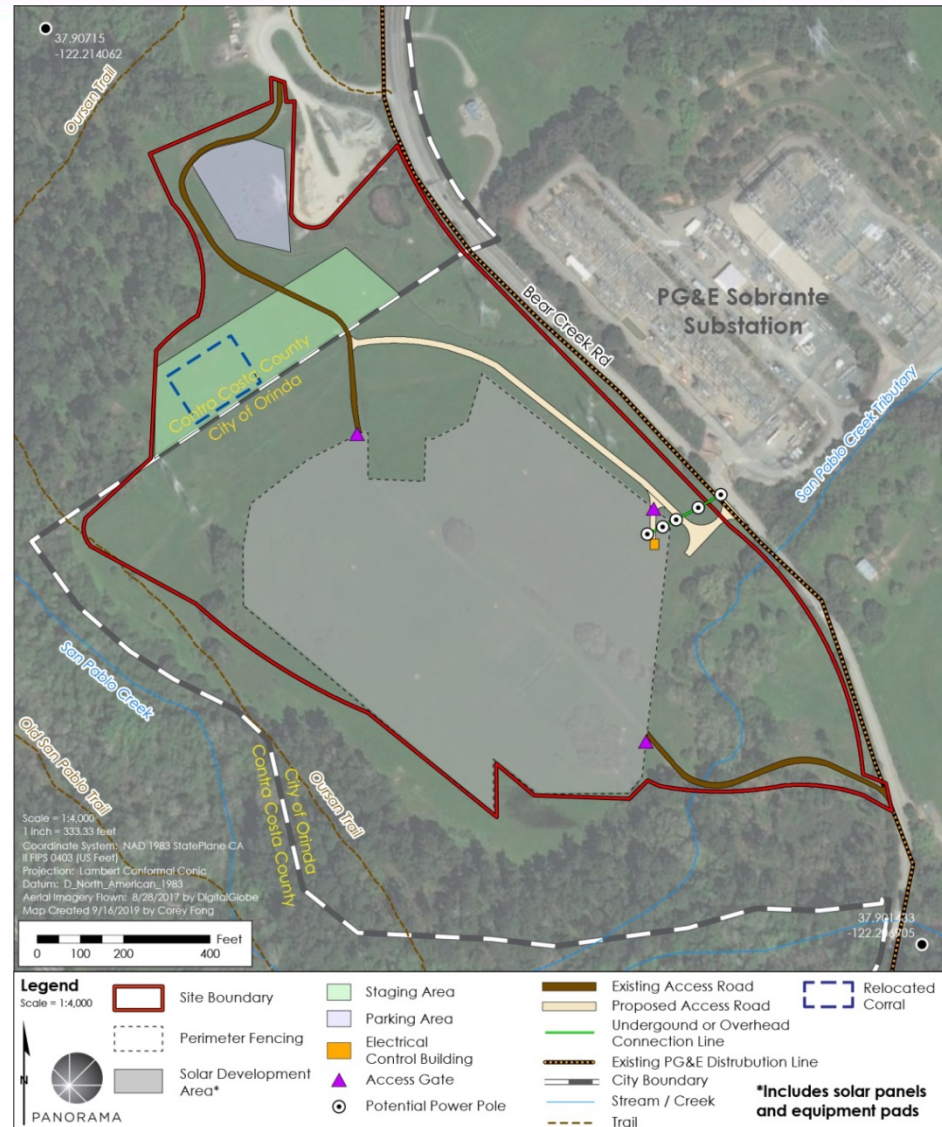
- Supports District Energy Policy (Policy 7.07)
- Estimated production: 12,000 MWh annually
- Offsets 14% of District's indirect emission sources
- Generation credited to other District accounts
- Overall project costs lowered by implementing through a power purchase agreement with third party

Project Site



Conceptual Site Plan

- 5 MW solar panel installation
- ~20 acres within San Pablo watershed
- Visual impacts would be minimized with vegetative screening
- Adjacent to PG&E substation to cluster utilities and minimize electrical lines



CEQA Analysis

- Mitigated Negative Declaration (MND)
- EBMUD Standard Practices and Procedures
- Mitigation Monitoring and Reporting Plan



Dusky-footed woodrat

Project and MND Public Outreach



- Met with City of Orinda staff, Orinda City Council, and Orinda Planning Commission
- 474 postcard mailers sent for notification of MND publication
- Public meeting during MND public review period
- MND notice posted on District website, filed with the County Clerk and published in the Contra Costa Times newspaper
- A copy of the MND sent to the Orinda Library
- Ten comment letters received

Key Comments and Concerns



- Permitting
- Site drainage
- Oak tree retention and restoration
- Zoning and land use

All comments addressed with no substantial changes to the MND

Next Steps



- Consider adoption of Final MND and approval project – February 11, 2020
- Execute PPA – June 2020
- Execute PG&E Agreement – June 2020
- Apply for Orinda permits – August 2020
- Construction – 2021

Questions



Water Supply Update

Board of Directors Meeting

February 11, 2020

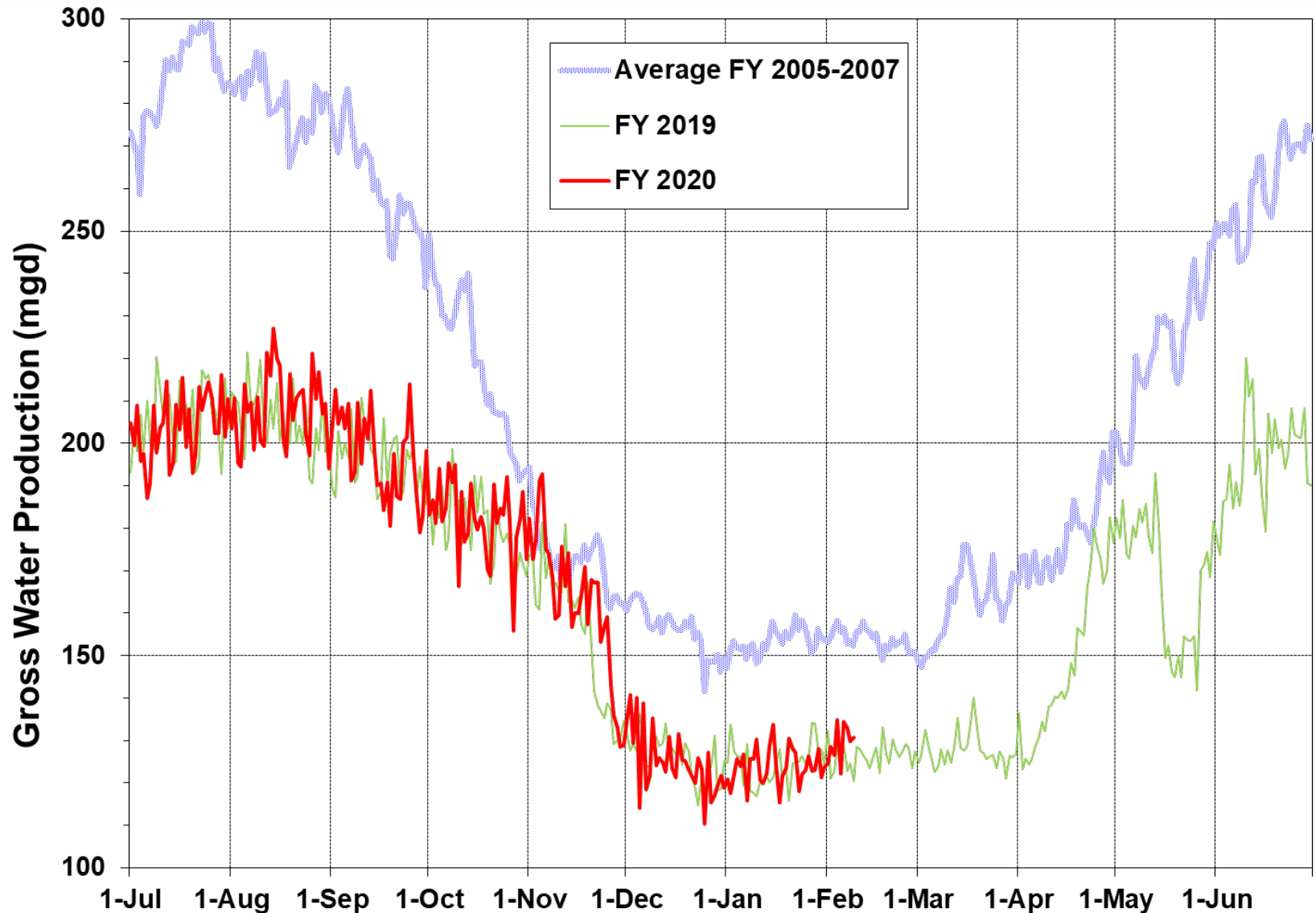
Water Supply Briefing

- Current Water Supply
- California Water Supply
- Water Supply Projections



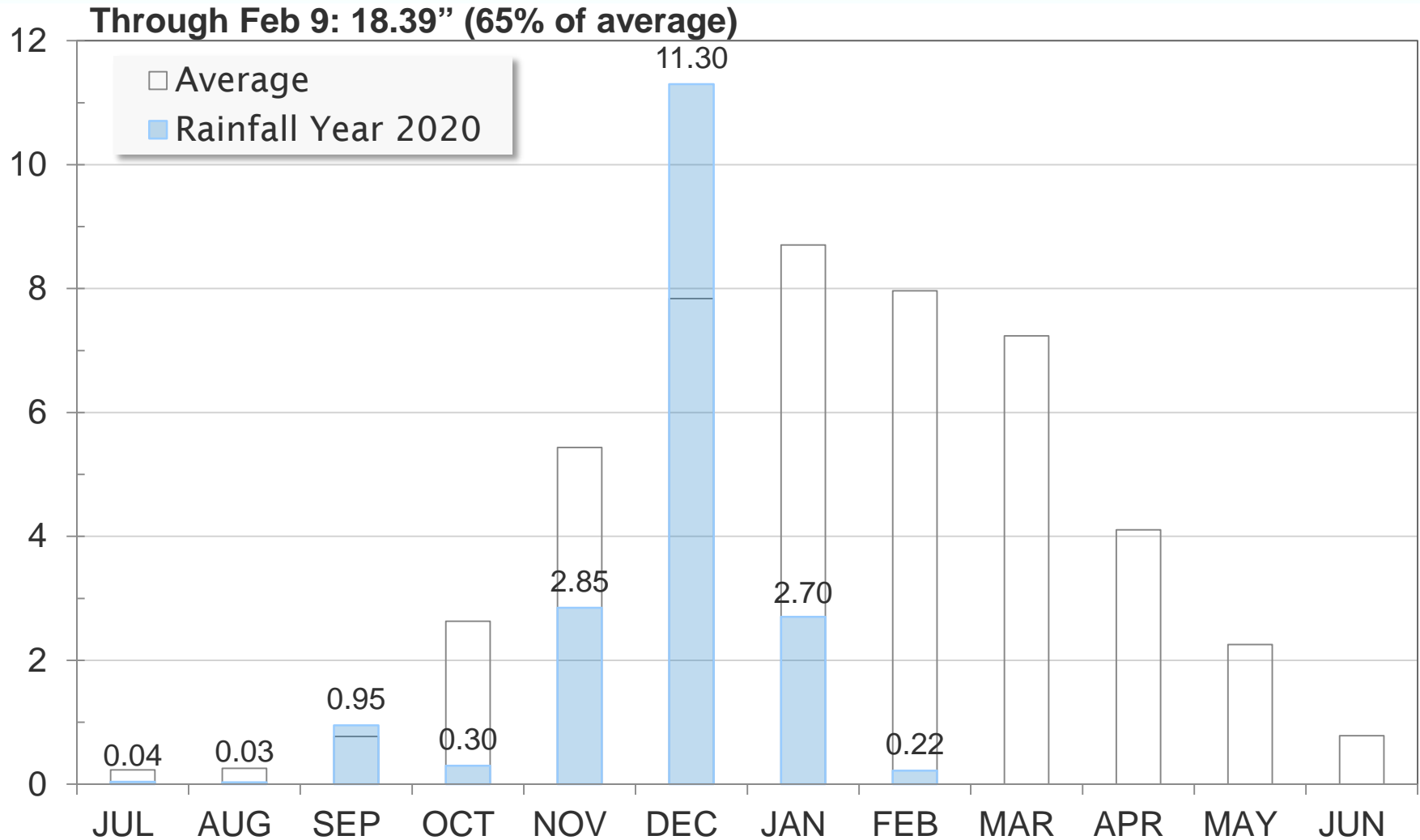
Current Water Supply

Gross Water Production



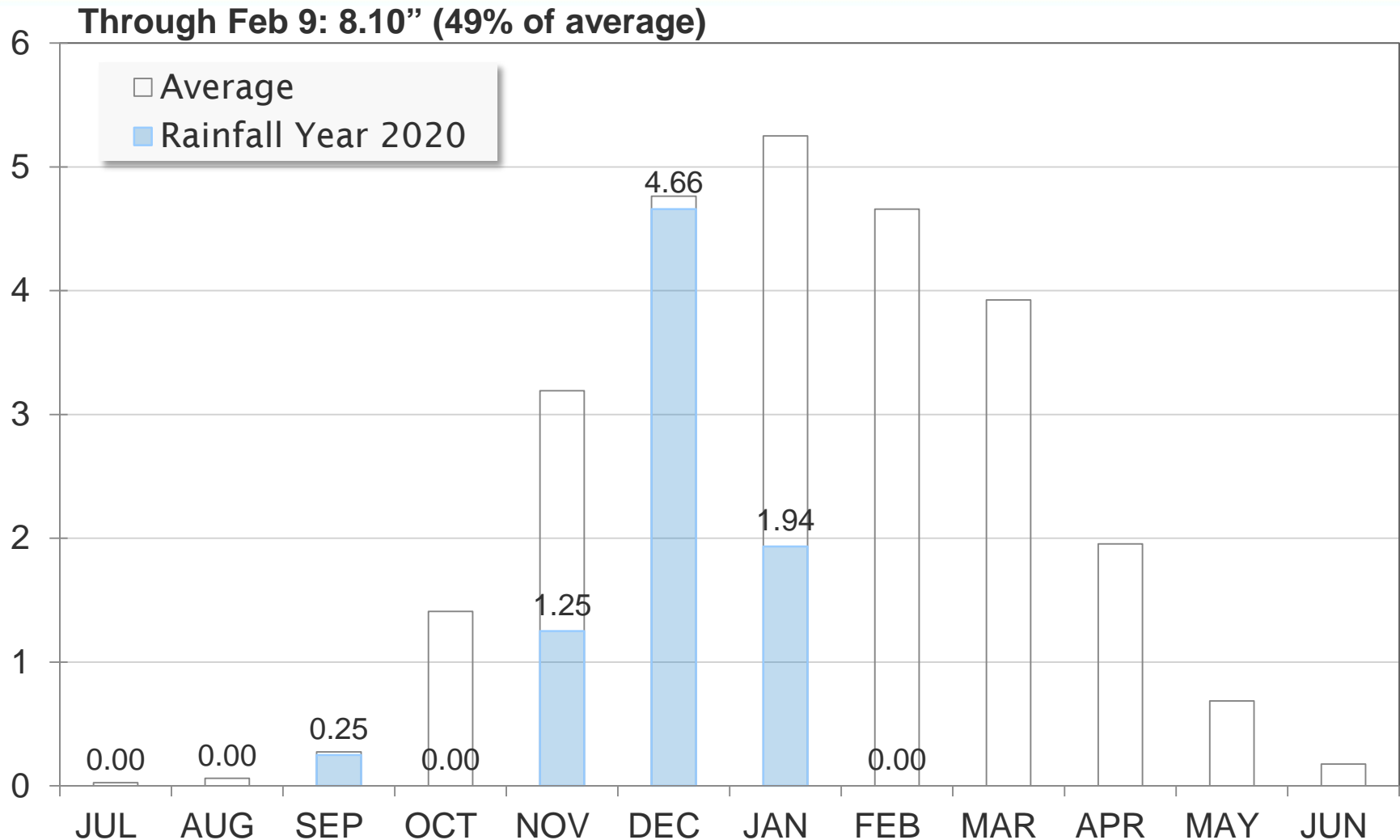
Current Water Supply

Mokelumne Precipitation



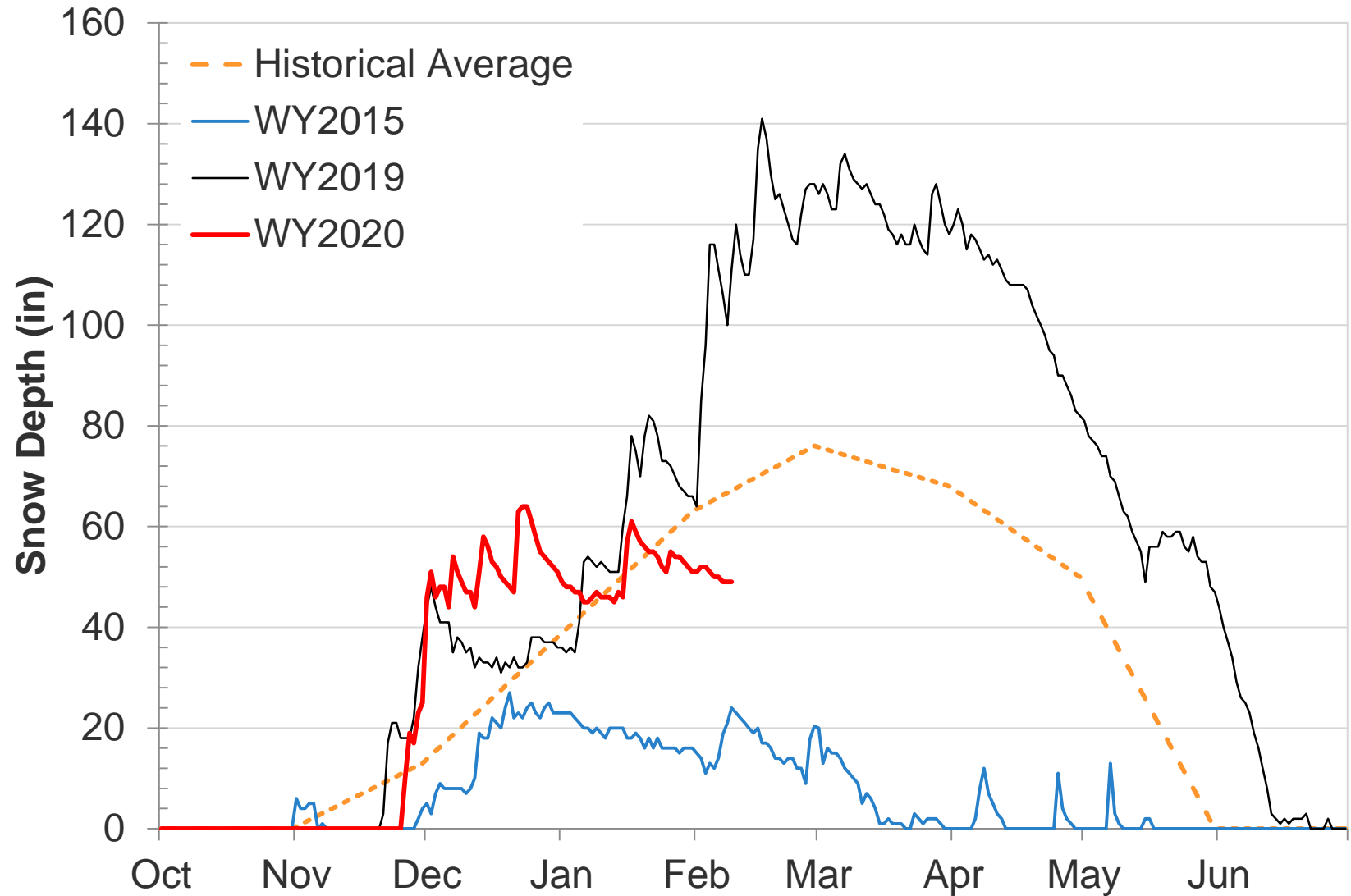
Current Water Supply

East Bay Precipitation



Current Water Supply

Caples Lake Snow Depth



Current Water Supply

Snow



As of Feb. 9, 2020	Cumulative Precipitation	% of Average
Caples Lake Snow Depth	49"	73%
Caples Lake Snow Water Content	17.0"	75%

Current Water Supply

Reservoir Storage



As of 2/9/2020	Current Storage	Percent of Average	Percent of Capacity
Pardee	182,430 AF	101%	90%
Camanche	296,460 AF	112%	71%
East Bay	129,750 AF	101%	86%
Total System	608,640 AF	106%	79%

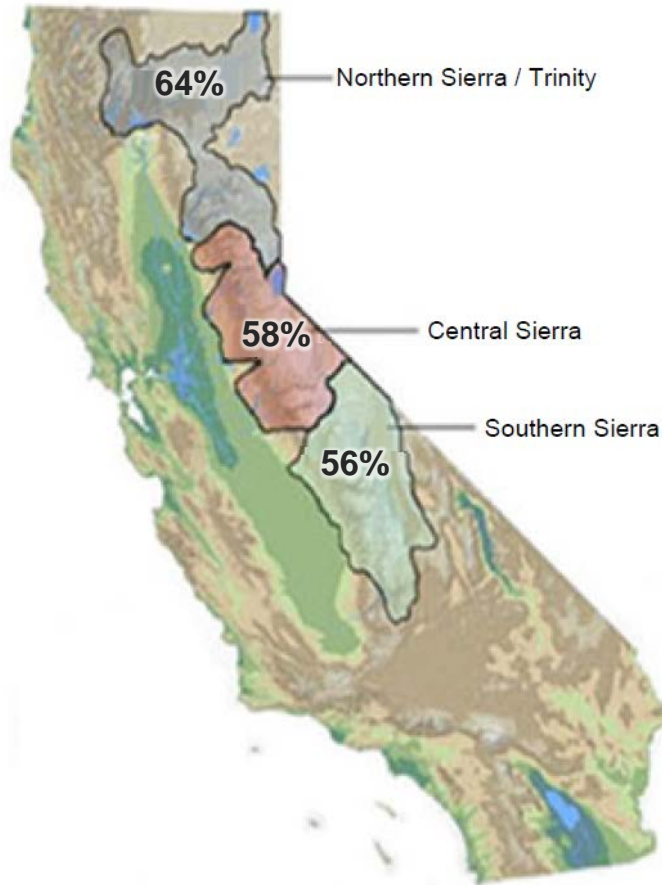
California Water Supply

Automated Sensor Snow Water Equivalents



Data for: 10-Feb-2020

% Normal for this Date



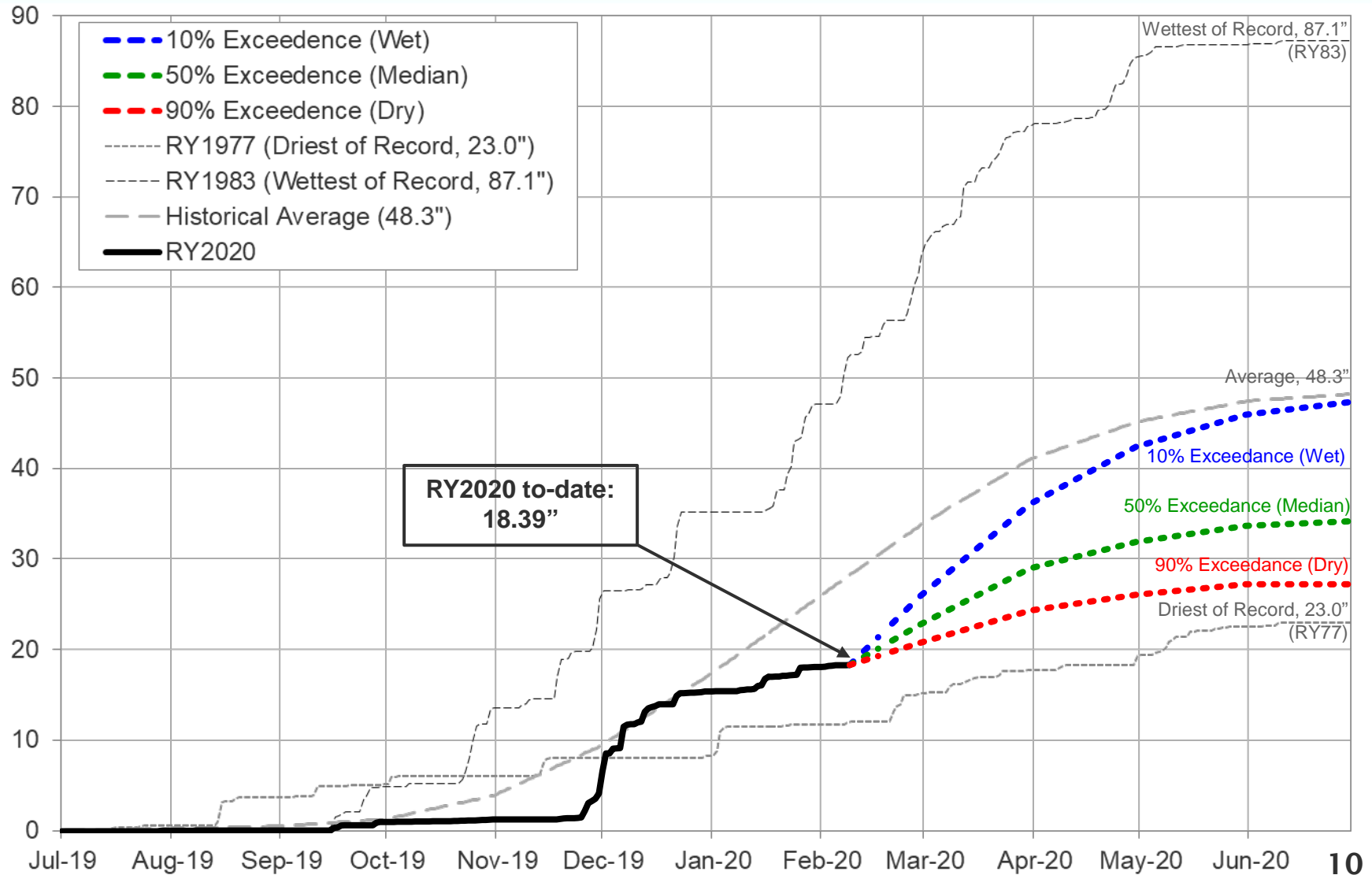
Caples Lake Snow Water Content

Year	% of Normal on February 9
2018	22%
2019	159%
2020	75%

Statewide Average: **60%**

Water Supply Projections

Mokelumne Precipitation Rainfall Year 2020

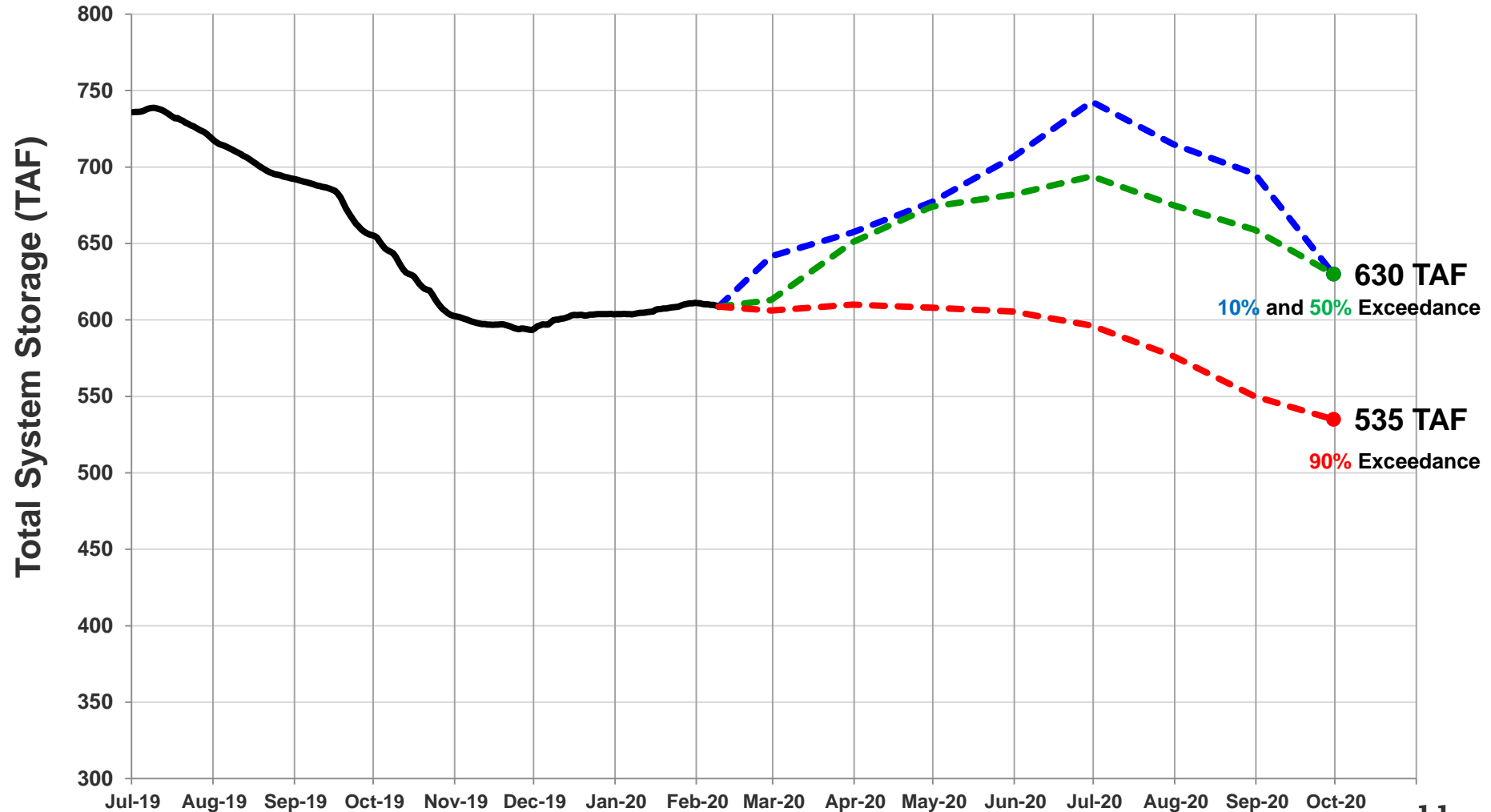


Water Supply Projections

Projected 2020 EBMUD Total System Storage



Total System Storage WY2020



Questions ?



WATER SUPPLY ENGINEERING DAILY REPORT

Monday, February 10, 2020

RESERVOIR STORAGE AND ELEVATION

	<u>WATER SURFACE</u>		<u>STORAGE</u>		<u>MAXIMUM CAPACITY</u>		Release	Spill
	Elevation Feet	+Gain -Loss	+Gain -Loss	Ac-Ft	Elevation Feet	Storage Ac-Ft	Cfs	Cfs
<u>MOKELUMNE</u>								
Pardee	557.72	-0.01		182410	567.65	203795	206	0
Camanche	218.05	-0.04		296210	235.5	417120	330	0
<u>EAST BAY</u>								
Briones	570.93	0		55360	576.14	58960	0	0
Chabot	223.71	-0.01		9180	227.25	10350	0	0
Lafayette	437.88	-0.01		2930	449.16	4250	0	0
San Pablo	303.46	0.01		29890	313.68	37915	0	0
Upper San Leandro	451.01	0.01		32390	459.98	38905	0	0
Total East Bay Res.				129750		150380		
TOTAL SYSTEM STORAGE				608370	-270	771295		

DISTRIBUTION SYSTEM			MOKELUMNE SYSTEM		
<u>DISTRIBUTION RESERVOIRS</u>			<u>AQUEDUCT DELIVERIES</u>		
	Storage <u>MG</u>	Operating <u>Capacity</u>		<u>MG</u>	<u>Flow Conditions</u>
Today	326	720	Line 1	36.8	GRAVITY
Total Previous Day	<u>320</u>		Line 2	28.6	THROTTLE
Total Change	6		Line 3	<u>87.1</u>	<u>THROTTLE</u>
			TOTAL	152.5	236 Cfs
			<u>FSCC to MOK AQUEDUCTS (Measured at Brandt), MG</u>		
			Mok 1	0	
			Mok 2	<u>0</u>	
				0 MG	
<u>WATER PRODUCTION</u>	Million	Capacity	<u>RIVER FLOWS AND RELEASES</u>		
<u>AND DEMAND</u>	<u>Gallons</u>	<u>MGD</u>			<u>Cfs</u>
Lafayette WTP	0	25	Mokelumne River Natural Flow		331
Orinda WTP	123	190	Pardee Reservoir Inflow		437
San Pablo WTP	0	30	Pardee Release to Camanche Res.		206
Sobrante WTP	0	50	Pardee Release to JVID		0
Upper San Leandro WTP	0	45	Camanche Release to Mokel. River		330
Walnut Creek WTP	28	90			
<u>TOTAL SURFACE PRODUCTION</u>	151	430			
Miscellaneous(Estimated)	0.4		<u>PG&E CO. STORAGE (Acre-feet)</u>		
<u>TOTAL WATER PRODUCTION</u>	<u>151.4</u>				Maximum
Change in Distribution System	6		<u>Storage</u>	<u>Change</u>	<u>Capacity</u>
Wash Water from Distribution Sys.	0.8		Old Reservoirs	5561	-101
					26560
<u>SYSTEM DEMAND</u>	144.5		Salt Springs Res.	15376	24
East-of-Hills Demand	32		Lower Bear Res.	<u>9484</u>	<u>-134</u>
West-of-Hills Demand	112.5		Total	30421	-211
					220442

<u>RAW WATER TRANSMISSION</u>			<u>PRECIPITATION (Inches)</u>					
	<u>INPUT</u>	<u>DRAFT</u>	<u>THIS YEAR</u>			<u>AVERAGE YEAR</u>		
Briones Res.	0	0	<u>STATION</u>	<u>Today</u>	<u>This Month</u>	<u>Season to-Date</u>	<u>Season to-Date</u>	<u>Season Total</u>
San Pablo Res.	5	0						
U. San Leandro Res.	0	0	USL WTP	0	0	8.42	15.98	25.33
<u>TOTAL</u>	5	0	Orinda WTP	0	0	11	19.89	32.06
<u>REMARKS</u>			Lafayette Reservoir	0	0	7.77	17.73	28.18
WID Canal Diversion = 0 cfs			Walnut Creek WTP	0	0	9.11	14.6	23.02
Mokelumne River below WID = 292 cfs			Camp Pardee	0	0	9.28	12.64	21.56
			Salt Springs P.H.	0	0.26	18.21	26.93	45.51
			<u>CAPLES LAKE (7,830 FT) DATA</u>					
PG&E data as of 4:00 pm previous date.				Today	Average			
All other data as of midnight.			Snow Depth	48 Inches	67 Inches			
WTP capacities are sustainable rates.			Water Content	17.1 Inches	22.7 Inches			

EAST BAY MUNICIPAL UTILITY DISTRICT