

Water Supply Update

Board of Directors Meeting

January 28, 2020

Water Supply Briefing

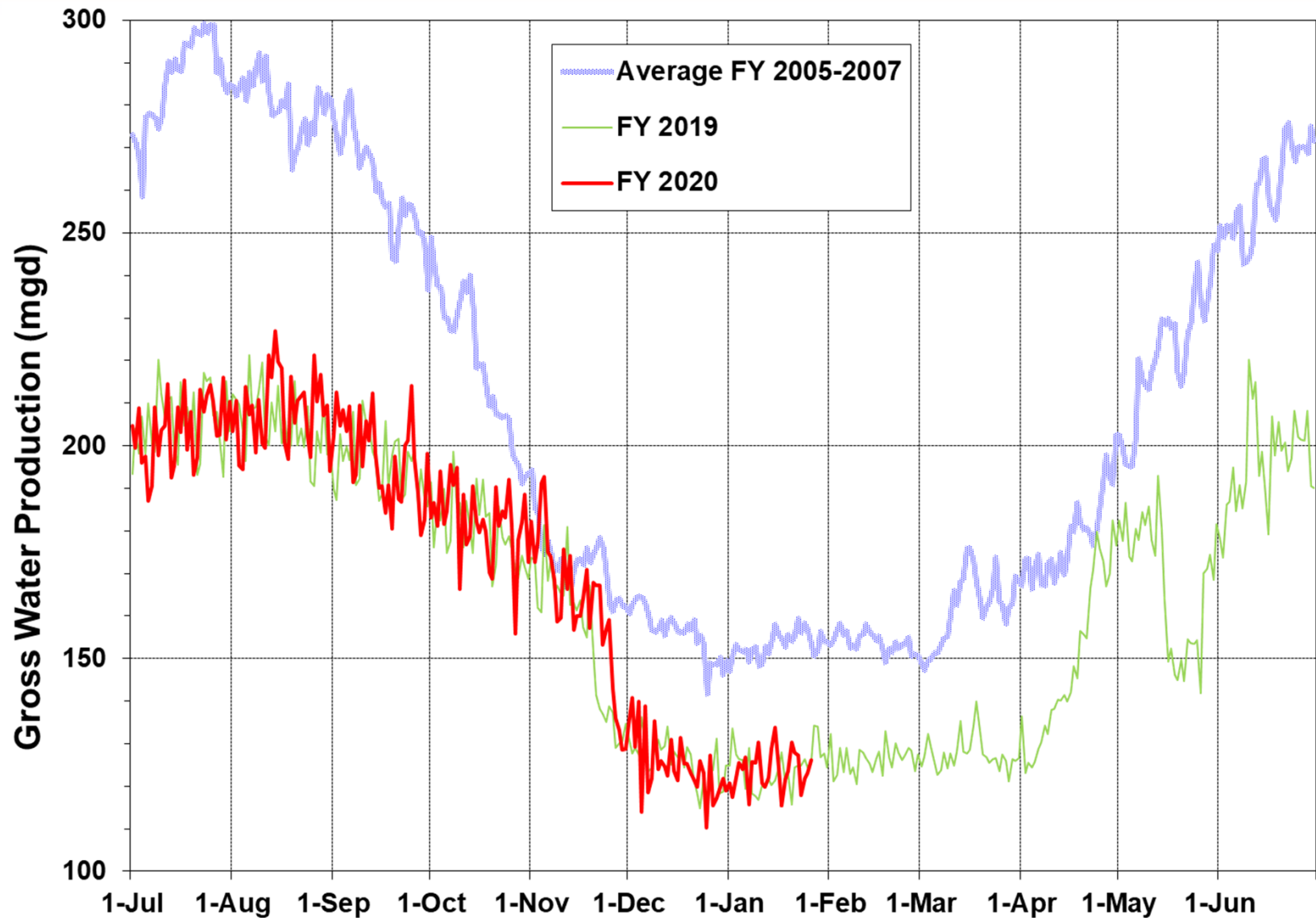


- Current Water Supply
- California Water Supply
- Water Supply Projections



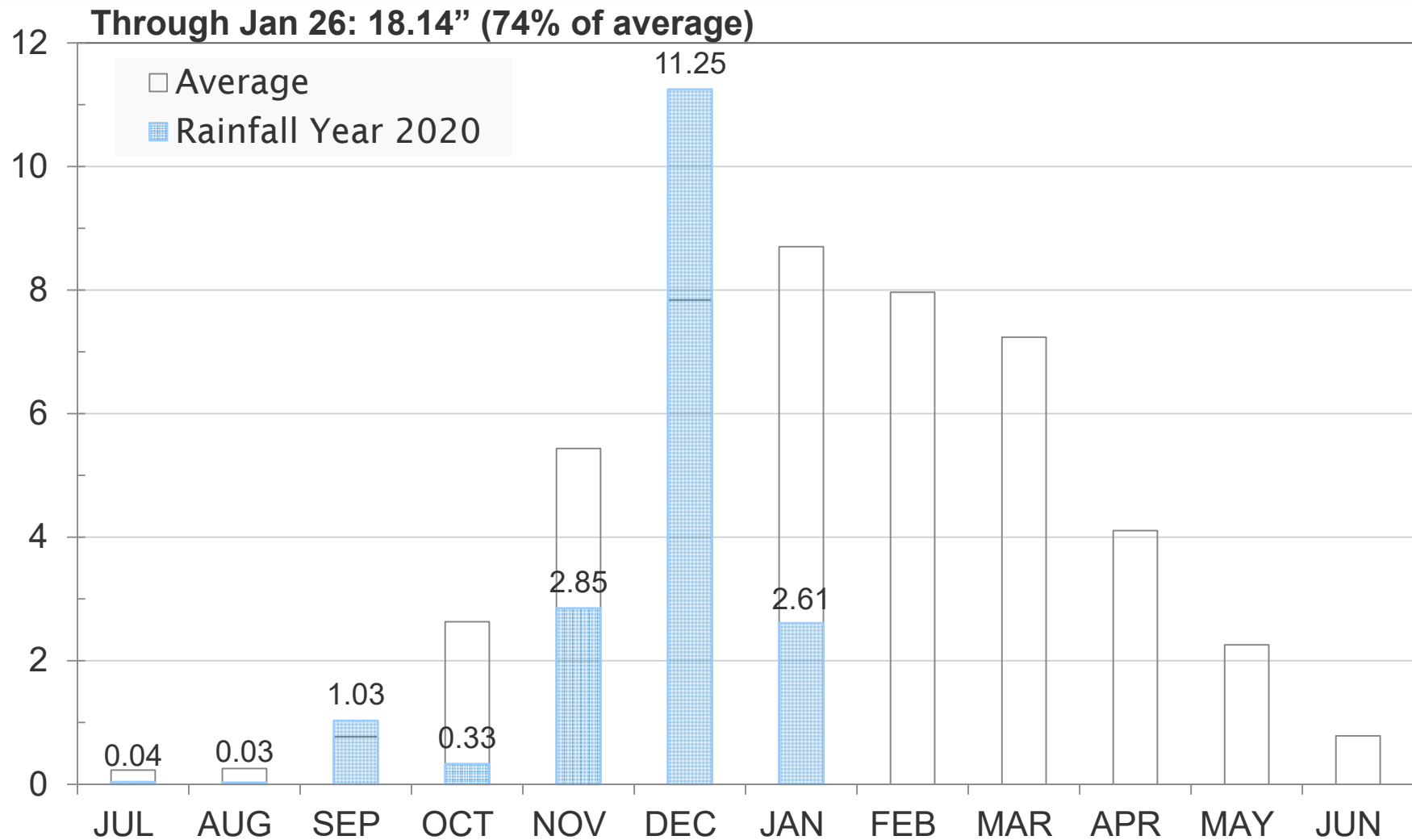
Current Water Supply

Gross Water Production



Current Water Supply

Mokelumne Precipitation

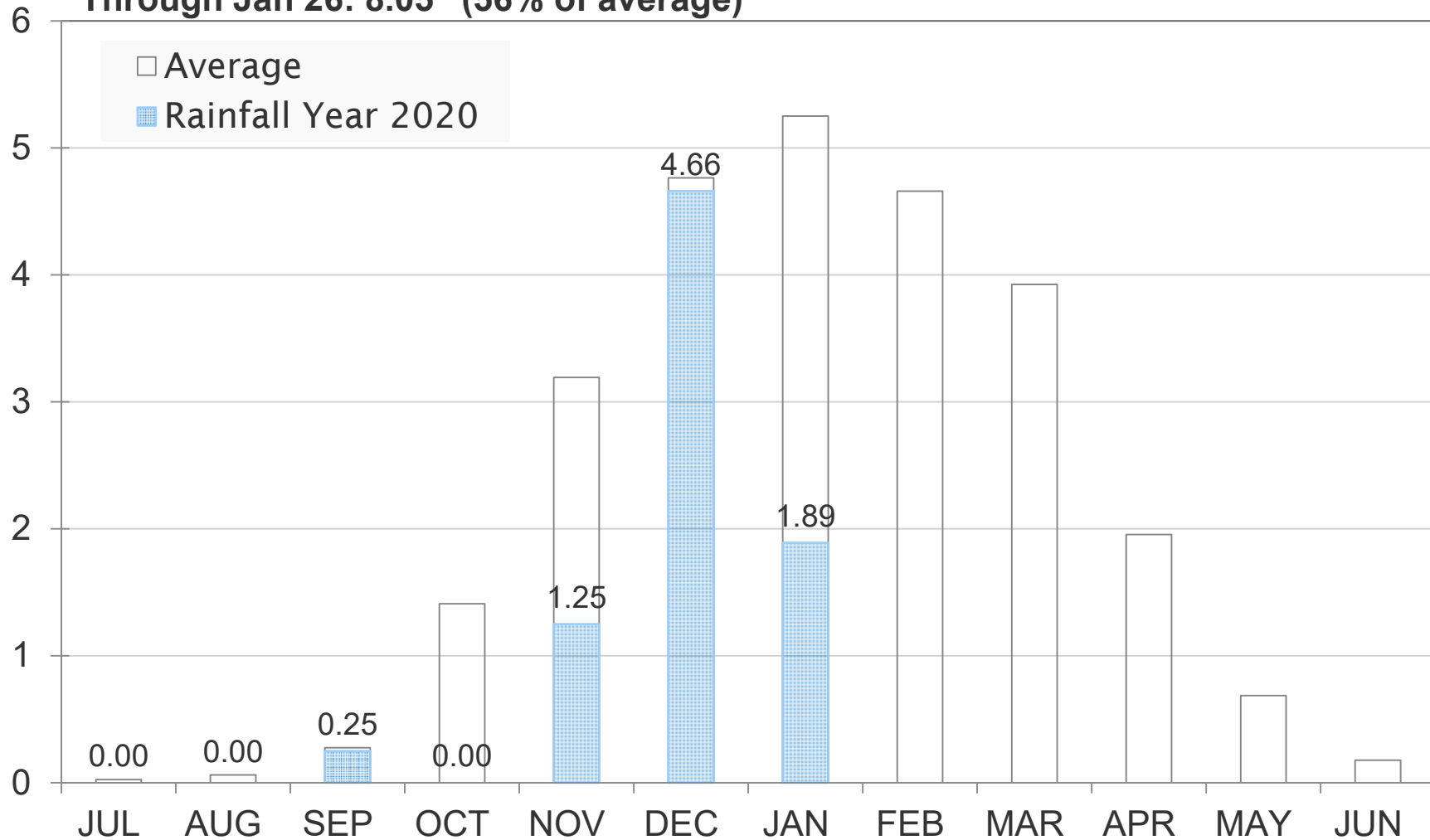


Current Water Supply

East Bay Precipitation

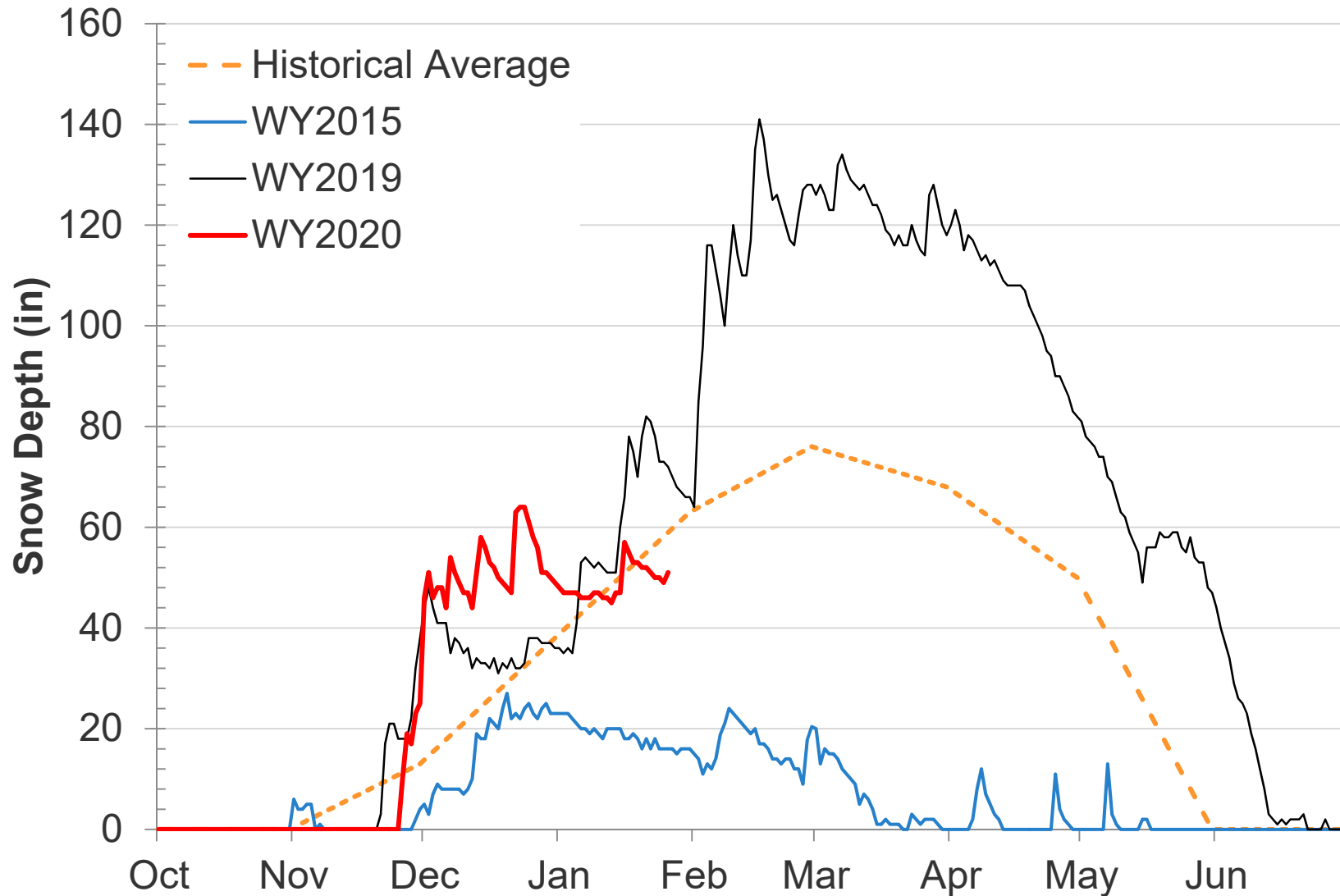


Through Jan 26: 8.05" (56% of average)



Current Water Supply

Caples Lake Snow Depth



Current Water Supply

Snow



As of Jan. 26, 2020	Cumulative Precipitation	% of Average
Caples Lake Snow Depth	51"	86%
Caples Lake Snow Water Content	15.90"	84%

Current Water Supply

Reservoir Storage



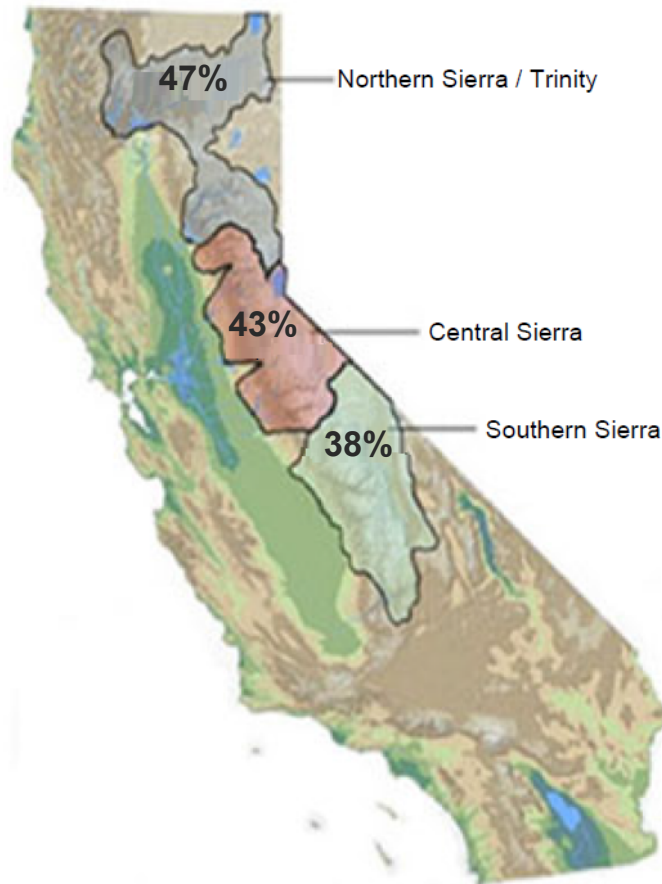
As of 1/26/2020	Current Storage	Percent of Average	Percent of Capacity
Pardee	184,020 AF	103%	90%
Camanche	296,150 AF	114%	71%
East Bay	129,560 AF	103%	86%
Total System	609,730 AF	108%	79%

California Water Supply

Automated Sensor Snow Water Equivalents



% of April 1 Average

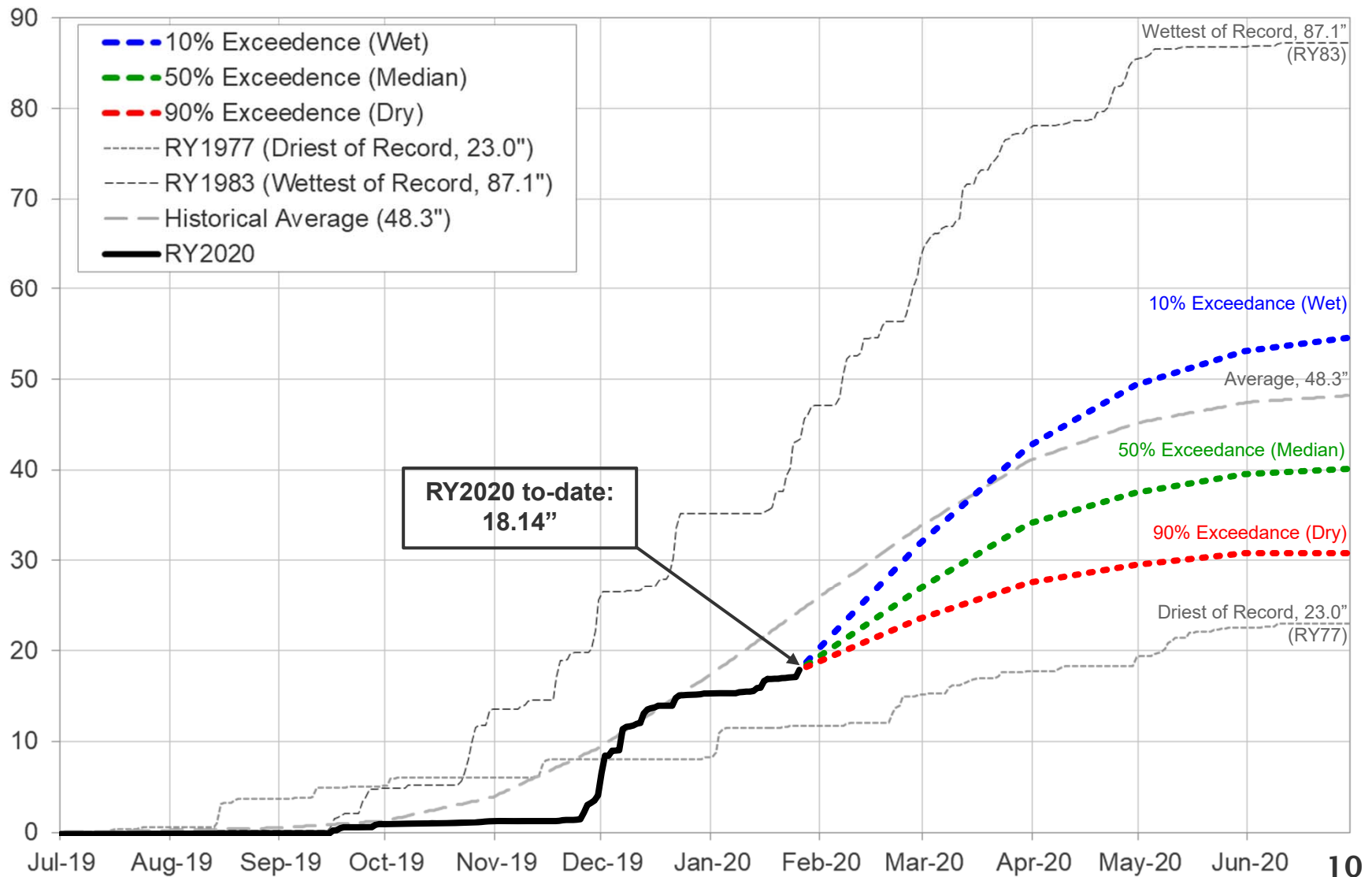


Caples Lake Snow Water Content
57% of April 1 Average

Statewide Average: **43%**

Water Supply Projections

Mokelumne Precipitation Rainfall Year 2020

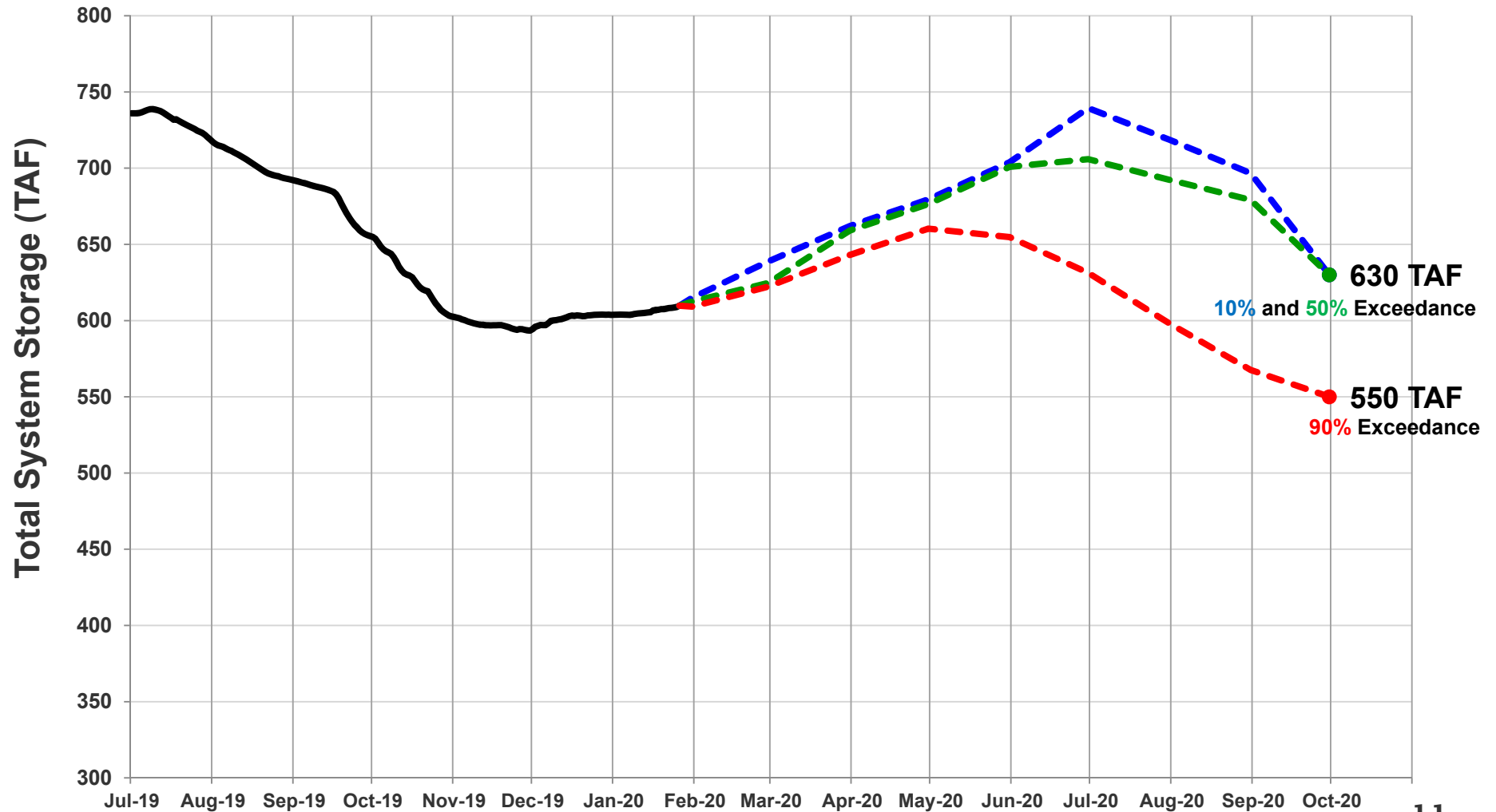


Water Supply Projections

Projected 2020 EBMUD Total System Storage



Total System Storage WY2020



Questions ?



WATER SUPPLY ENGINEERING DAILY REPORT

Monday, January 27, 2020

RESERVOIR STORAGE AND ELEVATION

	<u>WATER SURFACE</u>		<u>STORAGE</u>		<u>MAXIMUM CAPACITY</u>		Release	Spill
	Elevation	+Gain		+Gain	Elevation	Storage		
	Feet	-Loss	Ac-Ft	-Loss	Feet	Ac-Ft	Cfs	Cfs
<u>MOKELUMNE</u>								
Pardee	558.67	0.18	184390	370	567.65	203795	414	0
Camanche	218.05	0.01	296210	60	235.5	417120	330	0
<u>EAST BAY</u>								
Briones	570.99	0	55400	0	576.14	58960	0	0
Chabot	223.77	0	9200	0	227.25	10350	0	0
Lafayette	437.95	0	2930	0	449.16	4250	0	0
San Pablo	303.21	0.02	29710	10	313.68	37915	0	0
Upper San Leandro	450.93	0.01	32340	10	459.98	38905	0	0
Total East Bay Res.			129580	20		150380		
TOTAL SYSTEM STORAGE			610180	450		771295		

<u>DISTRIBUTION SYSTEM</u>		
<u>DISTRIBUTION RESERVOIRS</u>		
	Storage	Operating
	MG	Capacity
Today	319	720
Total Previous Day	314	
Total Change	5	
<u>WATER PRODUCTION</u>	Million	Capacity
<u>AND DEMAND</u>	Gallons	MGD
Lafayette WTP	0	25
Orinda WTP	102	190
San Pablo WTP	0	30
Sobrante WTP	0	50
Upper San Leandro WTP	0	45
Walnut Creek WTP	25.7	90
<u>TOTAL SURFACE PRODUCTION</u>	127.7	430
Miscellaneous(Estimated)	0.4	
<u>TOTAL WATER PRODUCTION</u>	128.1	
Change in Distribution System	5	
Wash Water from Distribution Sys.	0.3	
<u>SYSTEM DEMAND</u>	122.7	
East-of-Hills Demand	25.3	
West-of-Hills Demand	97.4	

<u>MOKELUMNE SYSTEM</u>		
<u>AQUEDUCT DELIVERIES</u>		
	MG	Flow Conditions
Line 1	37.4	GRAVITY
Line 2	19.6	THROTTLE
Line 3	72.8	THROTTLE
TOTAL	129.8	201 Cfs
<u>FSCC to MOK AQUEDUCTS (Measured at Brandt), MG</u>		
Mok 1	0	
Mok 2	0	
	0 MG	
<u>RIVER FLOWS AND RELEASES</u>		Cfs
Mokelumne River Natural Flow		829
Pardee Reservoir Inflow		806
Pardee Release to Camanche Res.		414
Pardee Release to JVID		0
Camanche Release to Mokel. River		330
<u>PG&E CO. STORAGE (Acre-feet)</u>		
	Storage	Change
		Maximum
Old Reservoirs	6584	127
Salt Springs Res.	15837	-31
Lower Bear Res.	11625	-51
Total	34046	45

<u>RAW WATER TRANSMISSION</u>		
	INPUT	DRAFT
Briones Res.	0	0
San Pablo Res.	6	0
U. San Leandro Res.	0	0
TOTAL	6	0

REMARKS
 WID Canal Diversion = 0 cfs
 Mokelumne River below WID = 372 cfs

PG&E data as of 4:00 pm previous date.
 All other data as of midnight.
 WTP capacities are sustainable rates.

<u>PRECIPITATION (Inches)</u>					
<u>STATION</u>	<u>THIS YEAR</u>			<u>AVERAGE YEAR</u>	
	Today	This Month	Season to-Date	Season to-Date	Season Total
USL WTP	0	2.19	8.33	13.88	25.33
Orinda WTP	0	2.72	10.99	17.08	32.06
Lafayette Reservoir	0	1.58	7.76	15.22	28.18
Walnut Creek WTP	0	1.69	9.08	12.49	23.02
Camp Pardee	0	1.54	9.28	10.91	21.56
Salt Springs P.H.	0	2.62	18.41	23.4	45.51

CAPLES LAKE (7,830 FT) DATA

	Today	Average
Snow Depth	50 Inches	60 Inches
Water Content	15.7 Inches	19.2 Inches