

Water Supply Update

Board of Directors Meeting

January 14, 2020

Water Supply Briefing



- Water Year 2019 Review
- Current Water Supply Conditions



Water Year 2019 Review



Upper Mokelumne Precipitation:	68.8" (48.3" avg)
Snow pack water content (max):	62.1" (31.8" avg)
Local Precipitation:	28.1" (26.8" avg)
Total unimpaired runoff:	1.23 MAF (740 TAF avg)
End of Water Year Storage:	655 TAF

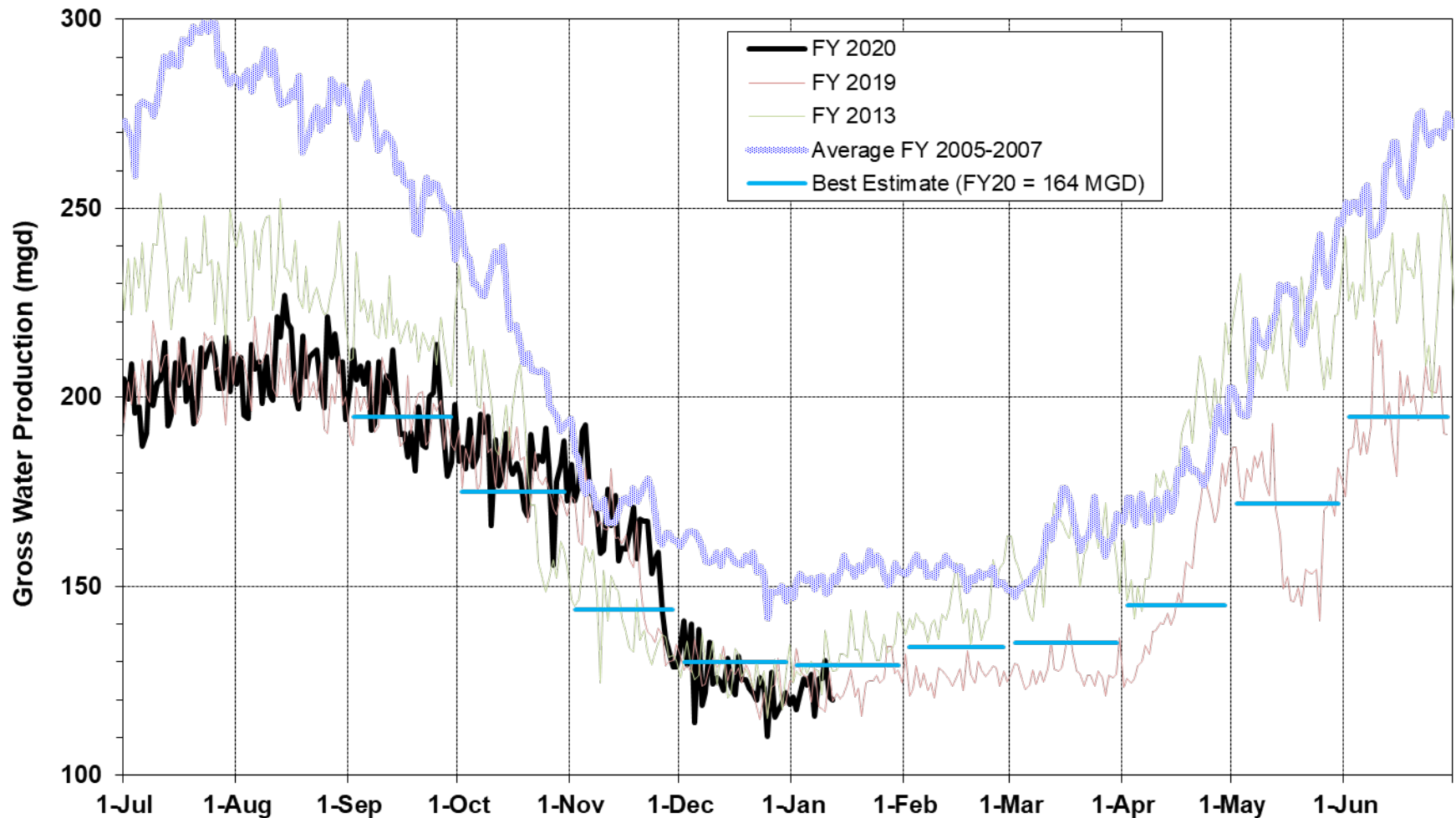


WATER YEAR 2020

CURRENT CONDITIONS

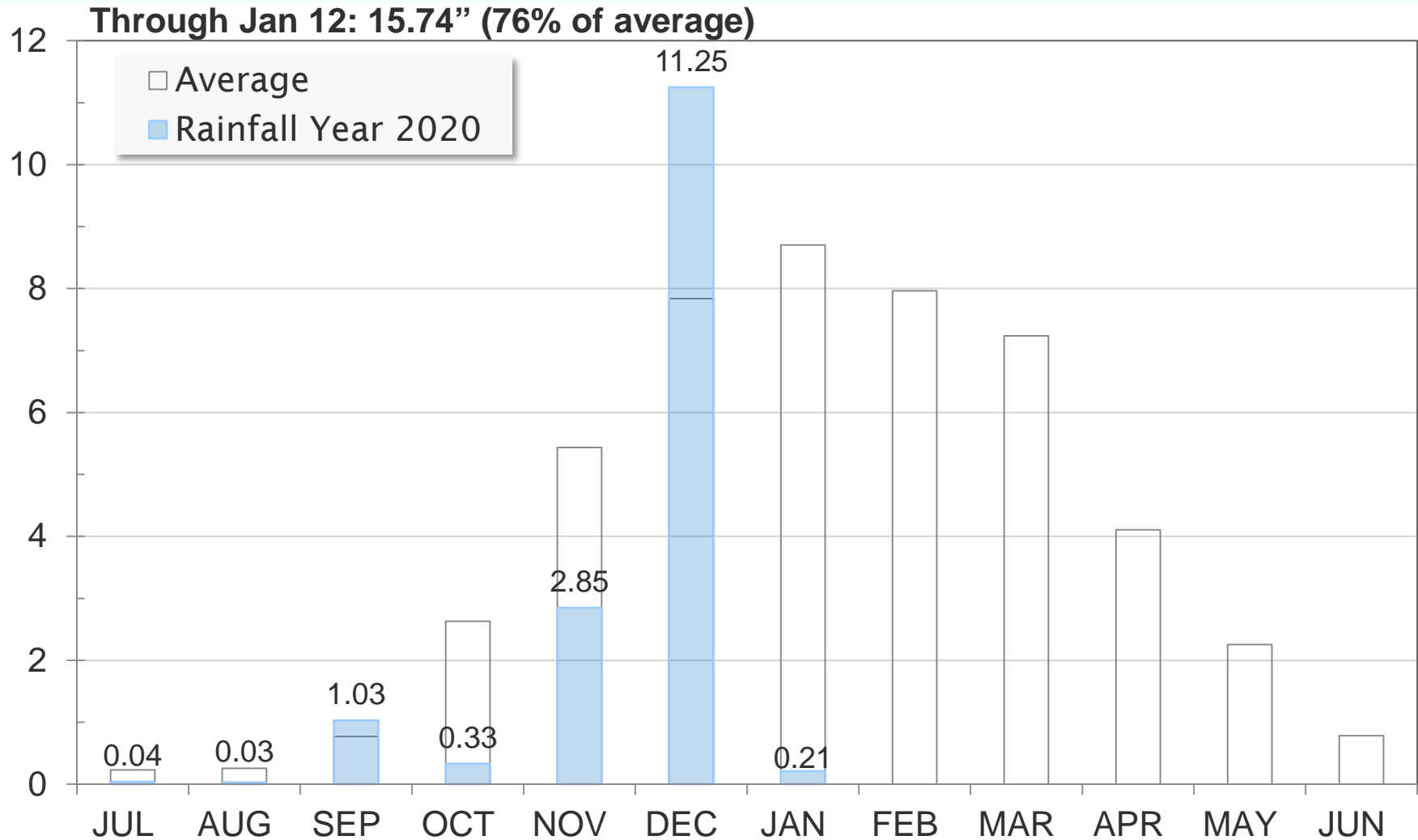
Current Water Supply

Gross Water Production



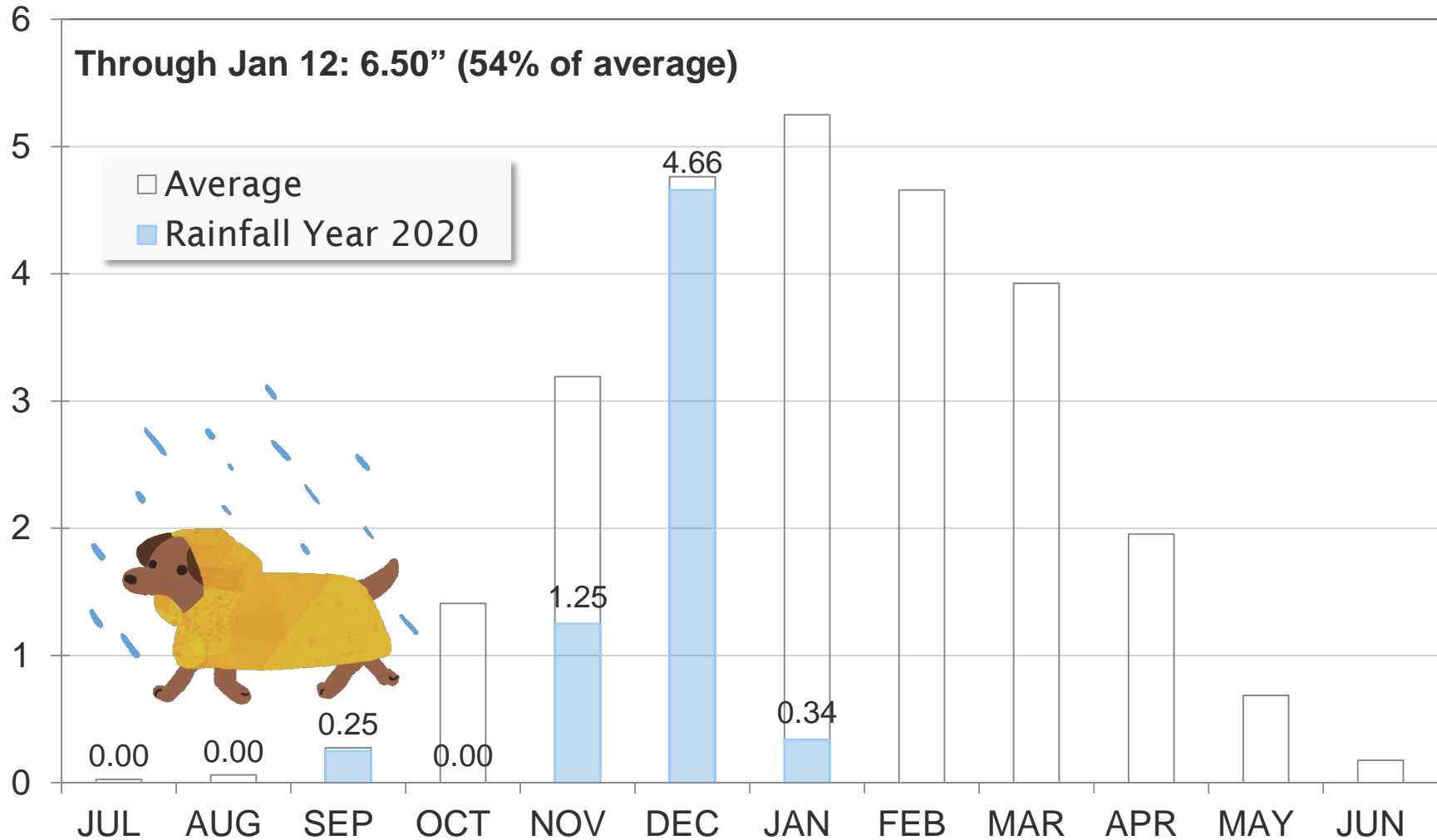
Current Water Supply

Mokelumne Precipitation



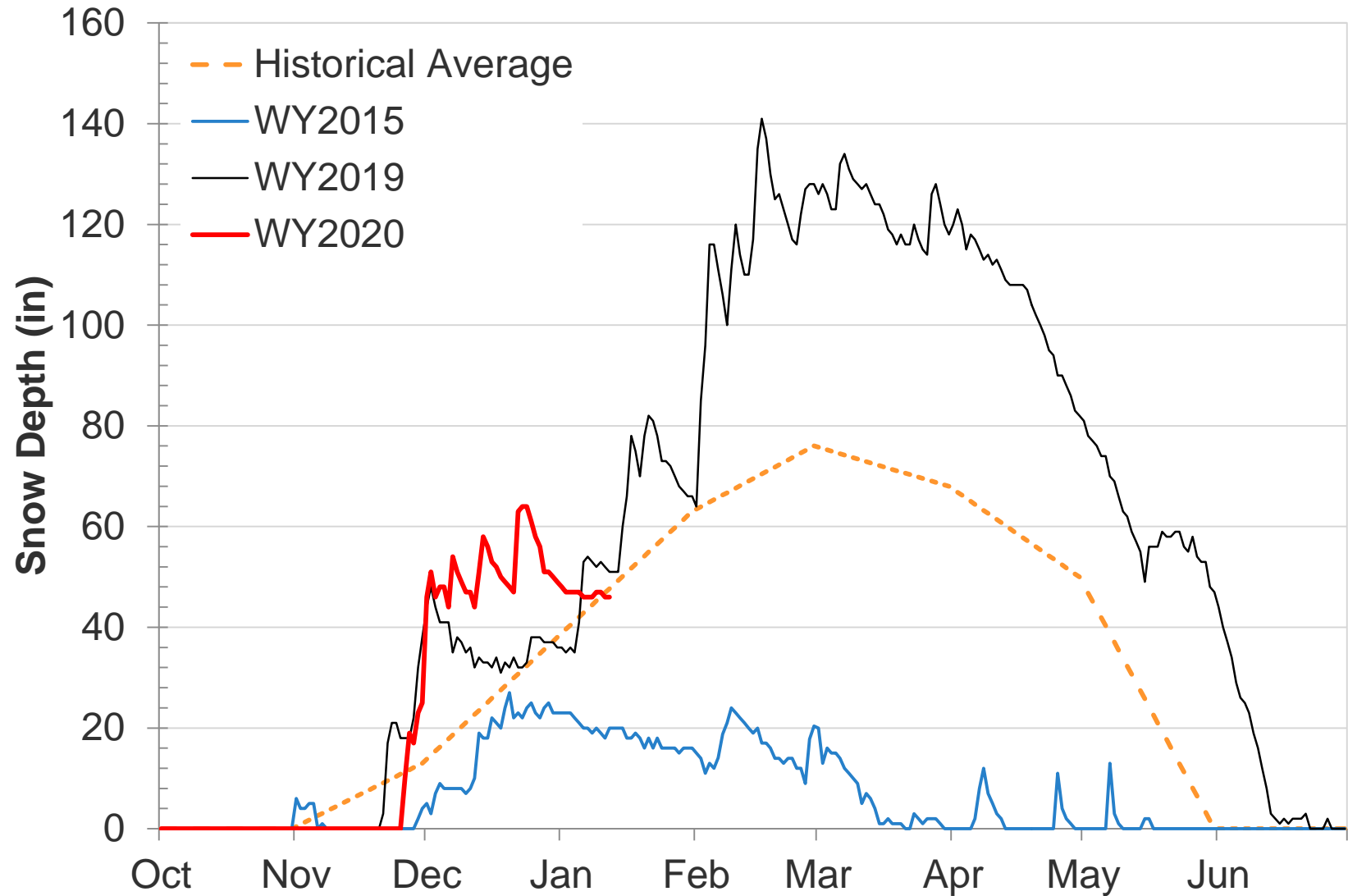
Current Water Supply

East Bay Precipitation



Current Water Supply

Caples Lake Snow Depth



Current Water Supply

Snow



As of Jan. 12, 2020	Cumulative Precipitation	% of Average
Caples Lake Snow Depth	46"	96%
Caples Lake Snow Water Content	14.03"	97%

Current Water Supply

Reservoir Storage



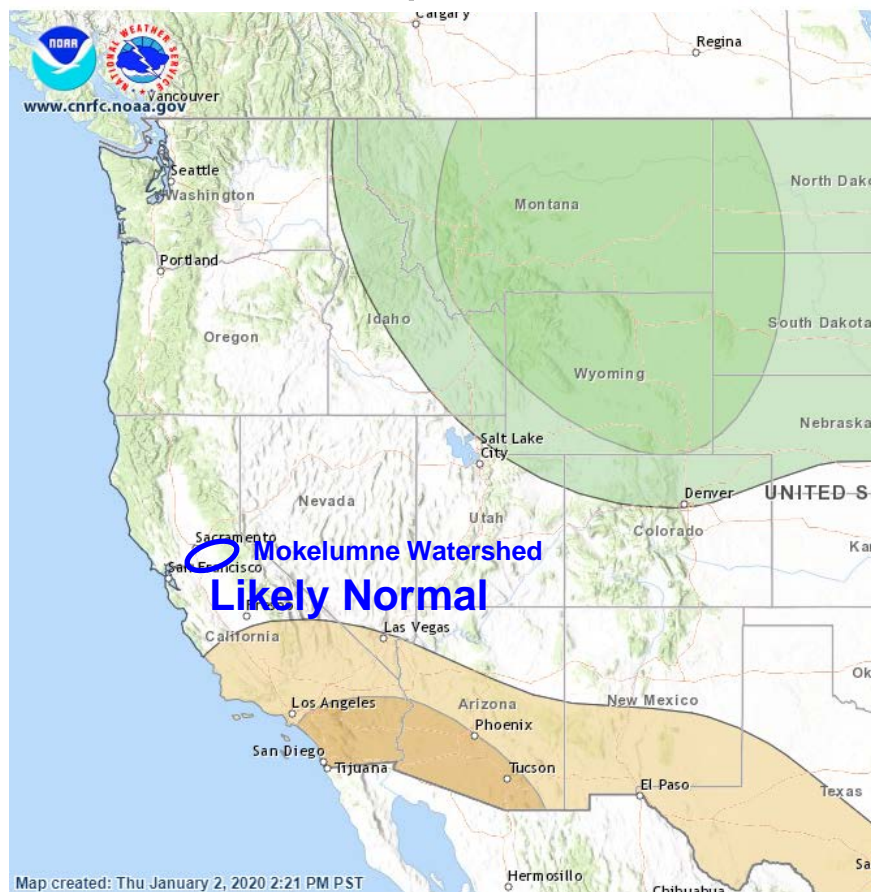
As of 1/12/2020	Current Storage	Percent of Average	Percent of Capacity
Pardee	180,780 AF	101%	89%
Camanche	295,640 AF	114%	71%
East Bay	128,490 AF	105%	85%
Total System	604,910 AF	108%	78%

Water Supply Projections

Regional Forecasts for Jan 2020 through Mar 2020

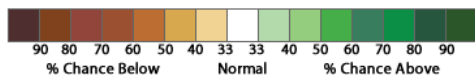


Precipitation

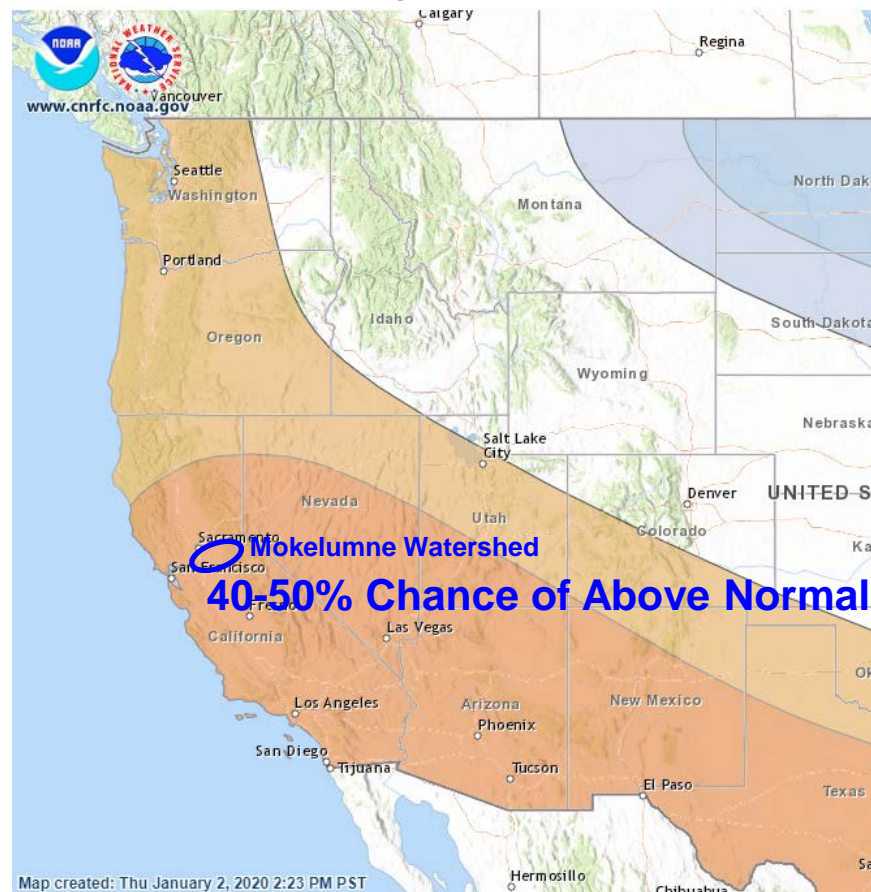


Lead 1 Precipitation Forecast Created: 12/19/2019 Valid: JFM 2020

CPC Precipitation Outlook

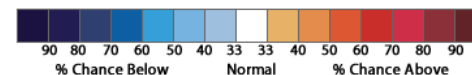


Temperature



Lead 1 Temperature Forecast Created: 12/19/2019 Valid: JFM 2020

CPC Temperature Outlook

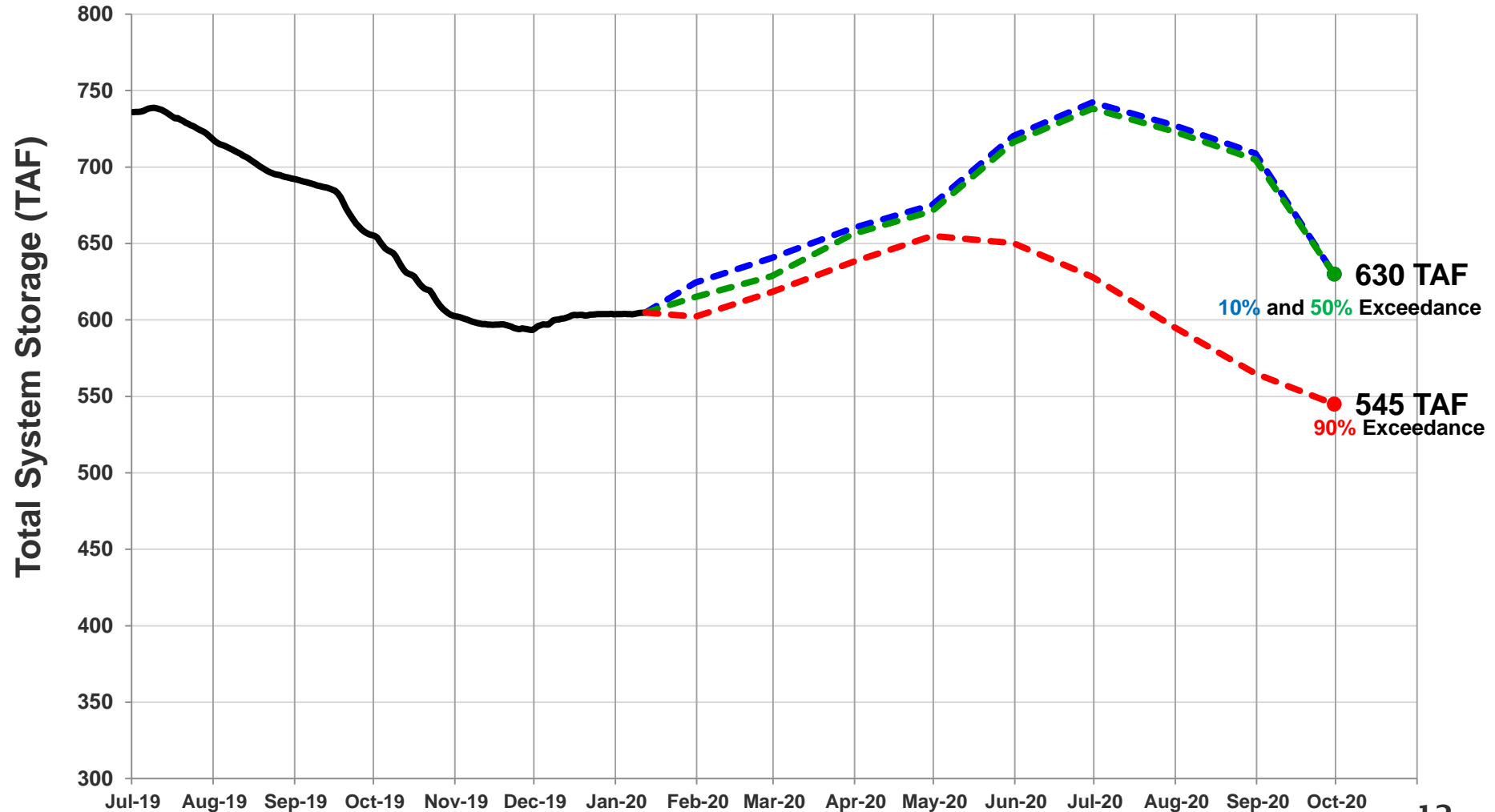


Water Supply Projections

Projected 2020 EBMUD Total System Storage



Total System Storage WY2020



Questions ?



WATER SUPPLY ENGINEERING DAILY REPORT

Monday, January 13, 2020

RESERVOIR STORAGE AND ELEVATION

	<u>WATER SURFACE</u>		<u>STORAGE</u>		<u>MAXIMUM CAPACITY</u>		Release	Spill
	Elevation	+Gain		+Gain	Elevation	Storage		
	Feet	-Loss	Ac-Ft	-Loss	Feet	Ac-Ft	Cfs	Cfs
<u>MOKELUMNE</u>								
Pardee	557.13	0.2	181190	410	567.65	203795	204	0
Camanche	217.93	-0.03	295450	-190	235.5	417120	330	0
<u>EAST BAY</u>								
Briones	570.87	-0.01	55310	-10	576.14	58960	0	0
Chabot	223.57	0	9140	0	227.25	10350	0	0
Lafayette	437.83	0.02	2920	0	449.16	4250	0	0
San Pablo	302.44	0.04	29150	30	313.68	37915	0	0
Upper San Leandro	450.39	-0.03	31970	-20	459.98	38905	0	0
Total East Bay Res.			128490	0		150380		
TOTAL SYSTEM STORAGE			605130	220		771295		

<u>DISTRIBUTION SYSTEM</u>			<u>MOKELUMNE SYSTEM</u>		
<u>DISTRIBUTION RESERVOIRS</u>			<u>AQUEDUCT DELIVERIES</u>		
	Storage	Operating		MG	Flow Conditions
	MG	Capacity			
Today	365	720	Line 1	37.2	GRAVITY
Total Previous Day	347		Line 2	19.3	THROTTLE
Total Change	18		Line 3	75.4	THROTTLE
			TOTAL	131.9	204 Cfs
<u>WATER PRODUCTION</u>	Million	Capacity	<u>FSCC to MOK AQUEDUCTS (Measured at Brandt), MG</u>		
<u>AND DEMAND</u>	Gallons	MGD	Mok 1	0	
Lafayette WTP	0	25	Mok 2	0	
Orinda WTP	105	190		0 MG	
San Pablo WTP	0	30	<u>RIVER FLOWS AND RELEASES</u>		
Sobrante WTP	0	50			Cfs
Upper San Leandro WTP	9.7	45	Mokelumne River Natural Flow		203
Walnut Creek WTP	25.4	90	Pardee Reservoir Inflow		616
			Pardee Release to Camanche Res.		204
<u>TOTAL SURFACE PRODUCTION</u>	140.1	430	Pardee Release to JVID		0
Miscellaneous(Estimated)	0.4		Camanche Release to Mokel. River		330
<u>TOTAL WATER PRODUCTION</u>	140.5				
Change in Distribution System	18		<u>PG&E CO. STORAGE (Acre-feet)</u>		
Wash Water from Distribution Sys.	0.4				Maximum
<u>SYSTEM DEMAND</u>	122.1			Storage	Change
East-of-Hills Demand	26.1		Old Reservoirs	5806	21
West-of-Hills Demand	96		Salt Springs Res.	25614	-803
			Lower Bear Res.	11871	-37
			Total	43291	-819

<u>RAW WATER TRANSMISSION</u>			<u>PRECIPITATION (Inches)</u>				
	INPUT	DRAFT	<u>THIS YEAR</u>		<u>AVERAGE YEAR</u>		
			STATION	Today	This Month	Season to-Date	Season to-Date
Briones Res.	0	0					Season Total
San Pablo Res.	5	0	USL WTP	0.06	0.51	6.65	11.67
U. San Leandro Res.	0	30	Orinda WTP	0.24	0.66	8.93	14.19
			Lafayette Reservoir	0.04	0.26	6.44	12.6
<u>TOTAL</u>	5	30	Walnut Creek WTP	0.15	0.38	7.77	10.32
<u>REMARKS</u>			Camp Pardee	0.04	0.56	8.3	9.14
WID Canal Diversion = 0 cfs			Salt Springs P.H.	0.04	0.16	15.95	19.76
Mokelumne River below WID = 278 cfs							45.51
			<u>CAPLES LAKE (7,830 FT) DATA</u>				
				Today		Average	
PG&E data as of 4:00 pm previous date.			Snow Depth	45 Inches		48 Inches	
All other data as of midnight.			Water Content	14.1 Inches		14.8 Inches	
WTP capacities are sustainable rates.							

EAST BAY MUNICIPAL UTILITY DISTRICT