

Washington Update

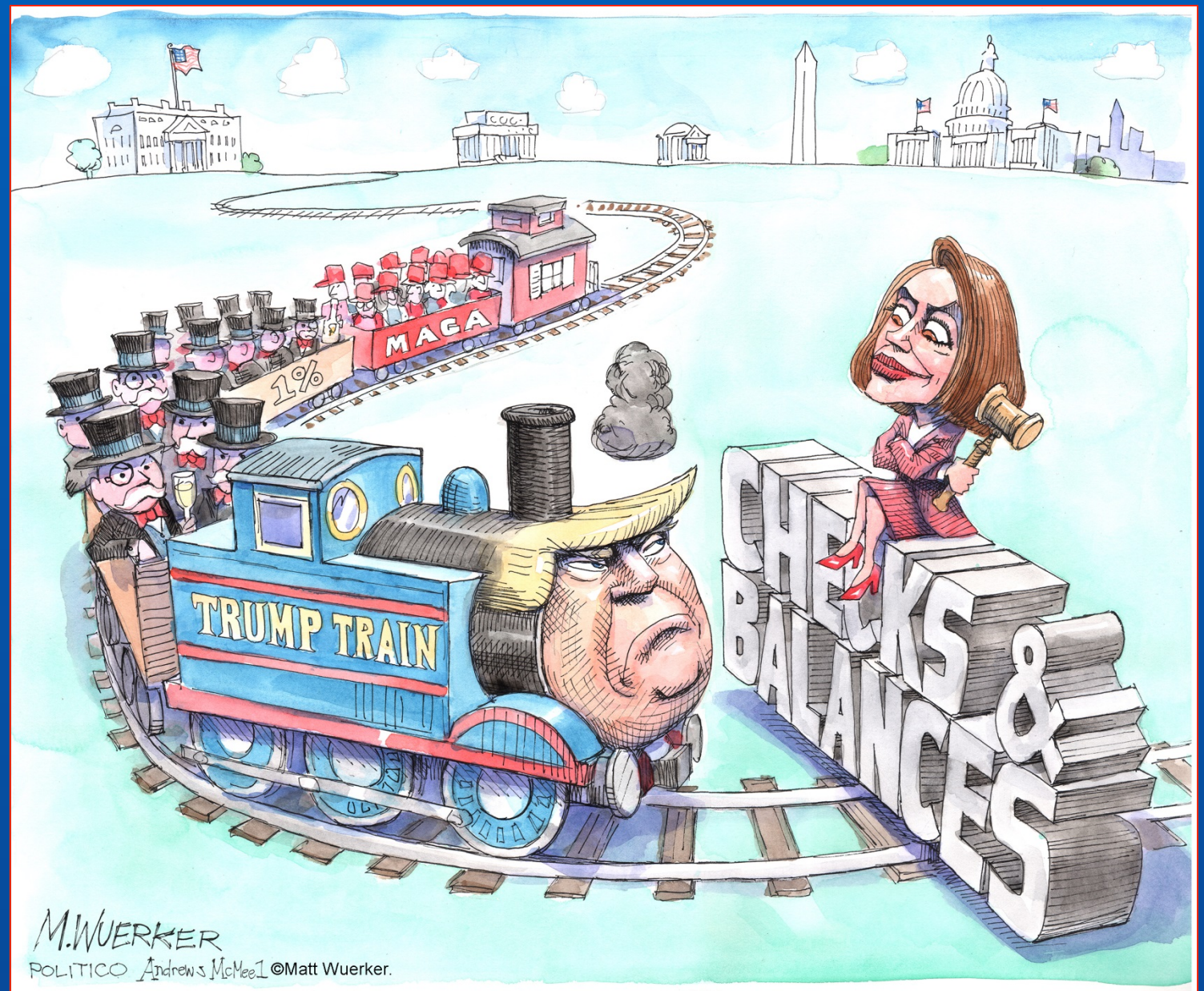


PRESENTED TO
BOARD OF DIRECTORS
EAST BAY MUNICIPAL UTILITY DISTRICT
OAKLAND, CALIFORNIA

ENS Resources, Inc.
1901 Pennsylvania Ave., N.W.
Suite 1005
Washington, D.C. 20006
JANUARY 8, 2019

ELECTION IMPACTS

- CONGRESSIONAL REALIGNMENT
- POLICY PRIORITIES



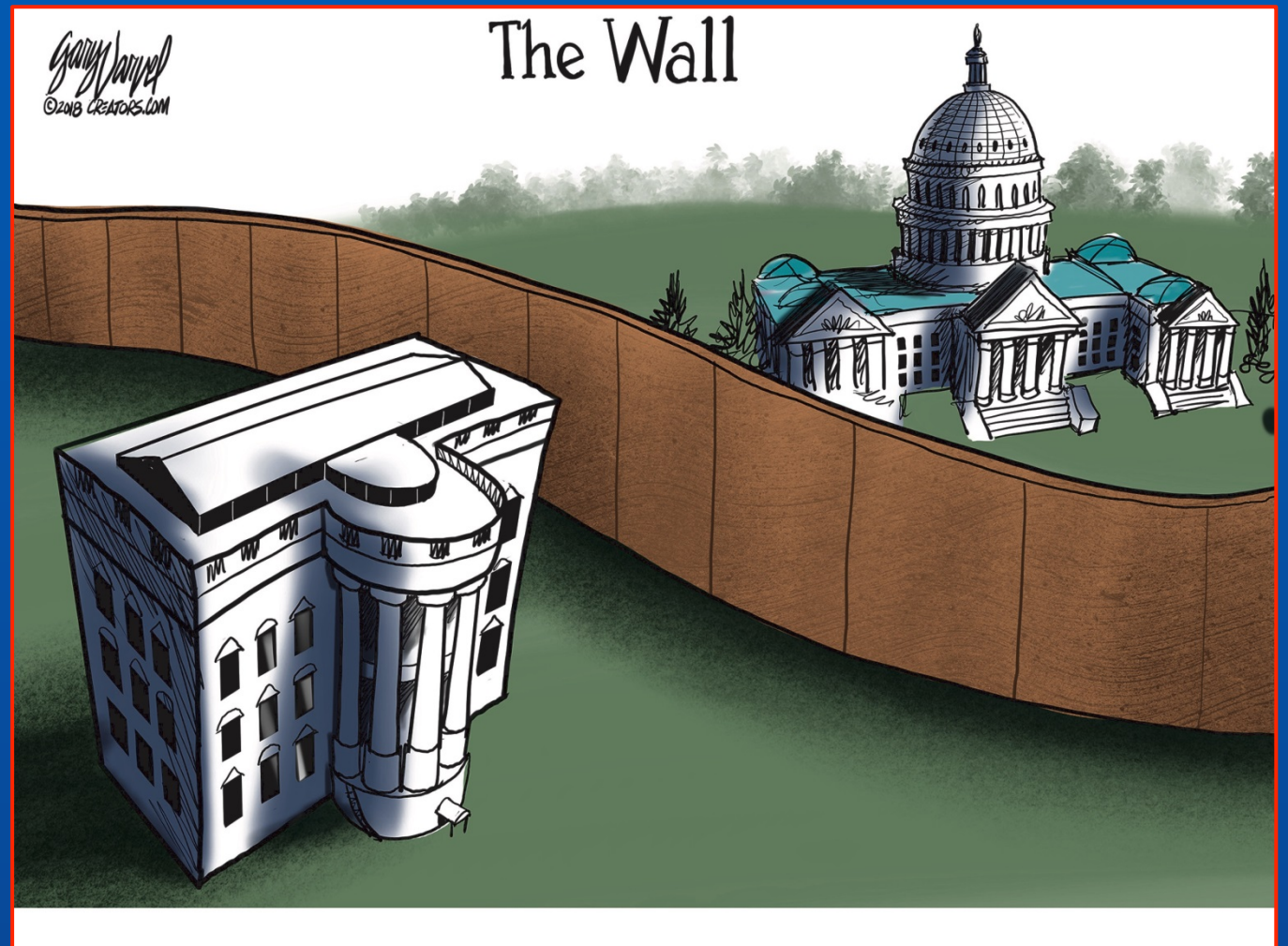
Matt Wuerker Editorial Cartoon used with the permission of Matt Wuerker and the Cartoonist Group. All rights reserved.

CONGRESSIONAL REALIGNMENT

- HOUSE 235 – 199 (-1)
- SENATE 53 – 47 (FILIBUSTER REIGNS)
- CALIFORNIA DELEGATION 46 – 7*
- CALIFORNIA LEADERSHIP AND COMMITTEE STRUCTURE
- INCREASED POLARIZATION

116TH CONGRESSIONAL AGENDA

- REOPEN THE FEDERAL AGENCIES
- COMMITTEE ASSIGNMENTS
- BUDGET AND TAX
- CLIMATE CHANGE
- INFRASTRUCTURE
- CONFIRMATION
- INVESTIGATIONS



REOPEN FEDERAL AGENCIES

WHAT'S AT STAKE

- 25% OF GOVERNMENT IMPACTED
- USEPA, INTERIOR, COMMERCE, JUDICIARY
- DIRECT IMPACT ON PUBLIC HEALTH AND ENVIRONMENT AND COMPLIANCE POLICY AND PROGRAMS

HOUSE COMMITTEE ASSIGNMENTS AND LEADERSHIP

- EBMUD DELEGATION PLAYS KEY ROLES
- INFRASTRUCTURE POLICY
- NATURAL RESOURCES—FISHERIES
- PUBLIC HEALTH
- APPROPRIATIONS
- LEADERSHIP

SENATE COMMITTEE ASSIGNMENTS AND LEADERSHIP

- SENATOR DIANE FEINSTEIN SENIOR APPROPRIATOR
- SENATOR KAMALA HARRIS RETAINS JUDICIARY
- LEADERSHIP STATUS QUO

BUDGET AND TAXES

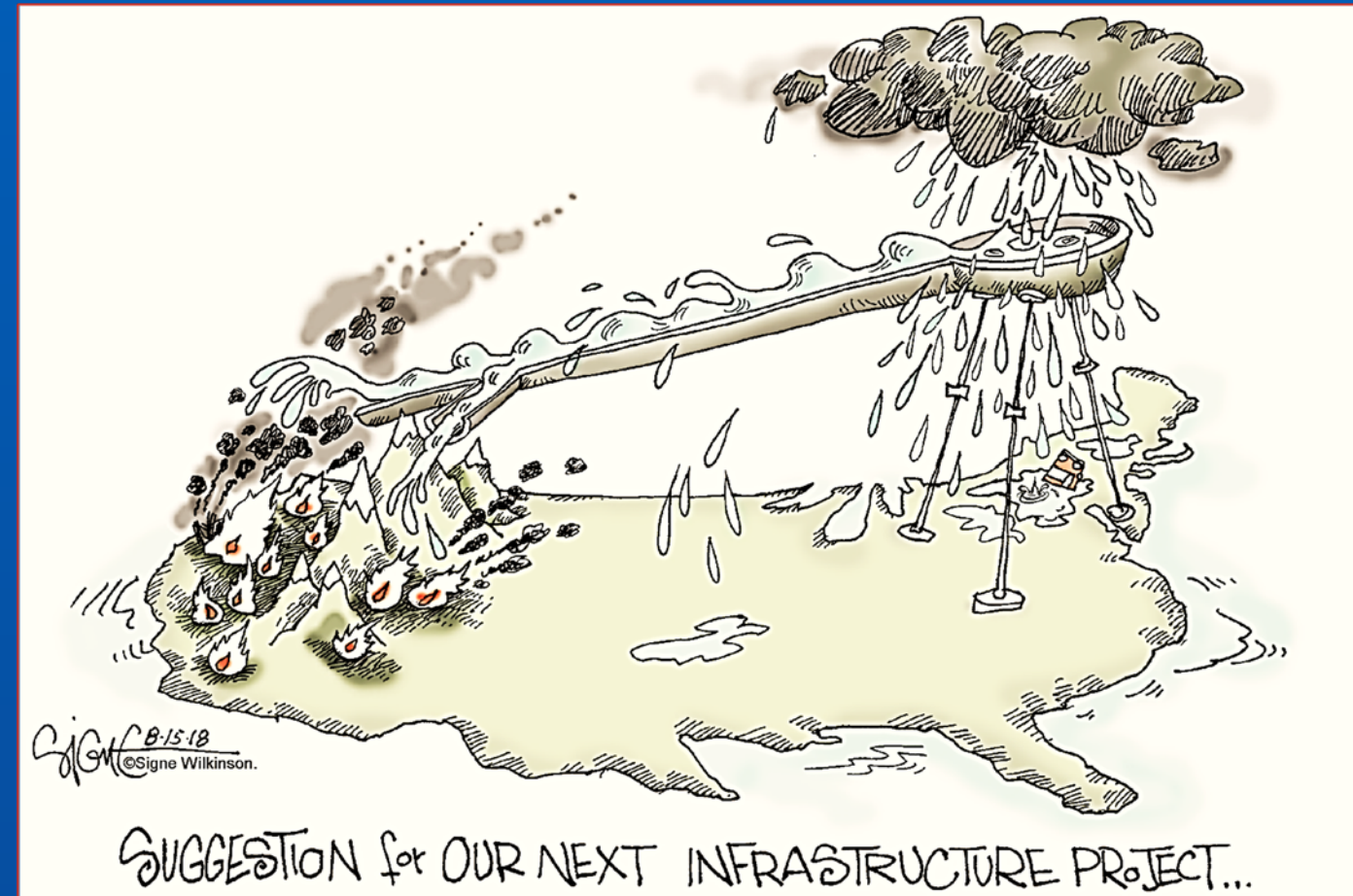
- NO BUDGET AGREEMENT COMPLICATES FY 2020 SPENDING
- DEFICIT IMPACTS ON SPENDING
- "SALT" AND TAX EXEMPT FINANCING
- TAX CREDITS FOR WATER INNOVATION
- HOUSE PAY-GO RULE

CLIMATE CHANGE

- HOUSE SELECT COMMITTEE ON CLIMATE CRISIS (KATHY CASTOR OF FLORIDA)
- MANDATE TO DOCUMENT AND MAKE RECOMMENDATIONS
- SET THE STAGE FOR ACTION
- SENATE REMAINS OPEN QUESTION

INFRASTRUCTURE

- ADDRESS UNMET TRADITIONAL AND EMERGING NEEDS
- WATER, WASTEWATER AND ALTERNATIVE WATER SUPPLY IN MIX
- DISADVANTAGED COMMUNITIES
- RESILIENCY
- DAMS
- FUNDING MECHANISMS



Signe Wilkinson Editorial Cartoon used with the permission of
Signe Wilkinson, the Washington Post Writers Group and the Cartoonist
Group. All rights reserved

CONFIRMATIONS

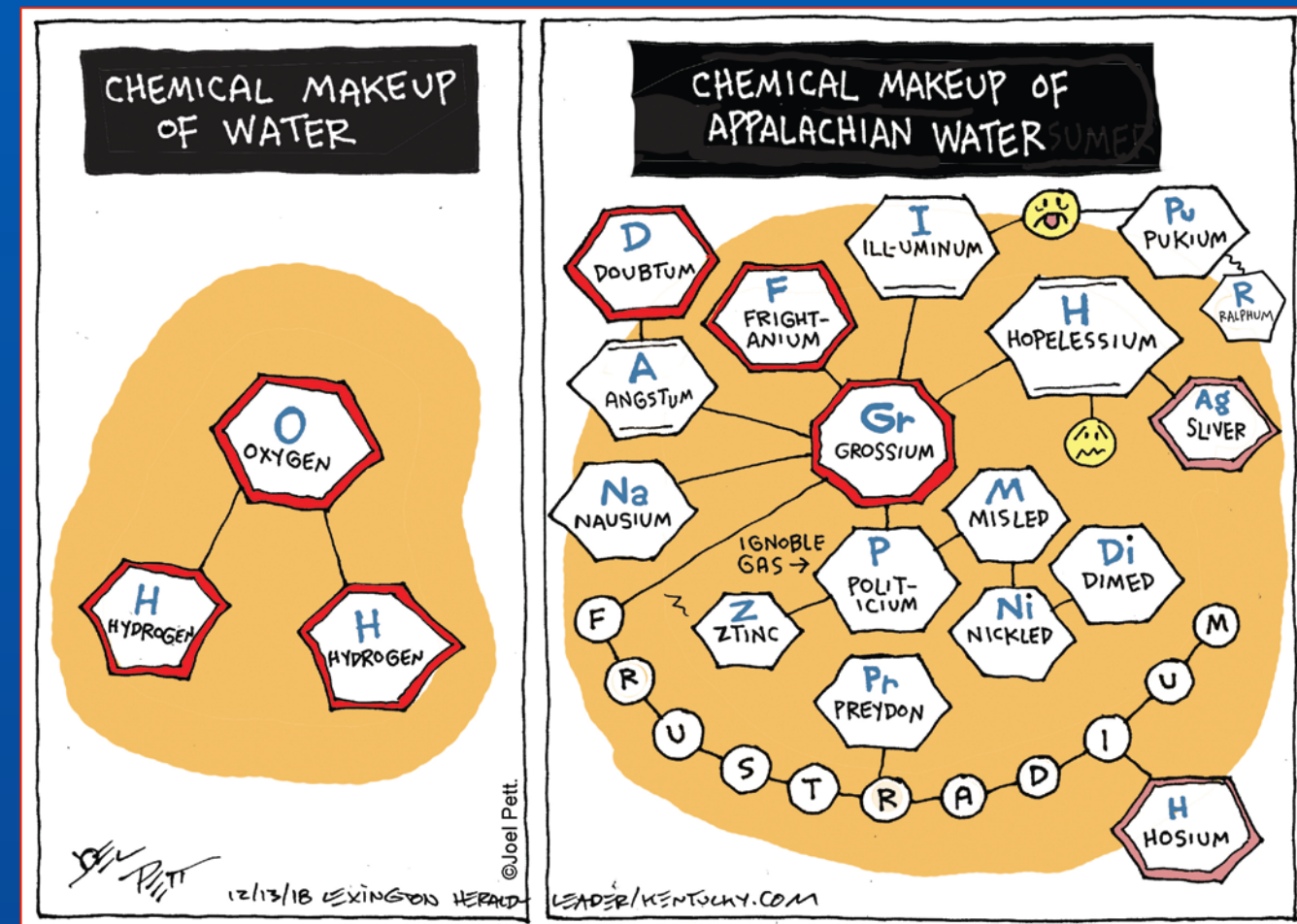
- OPPORTUNITIES TO RAISE CONCERNS
- U.S. ENVIRONMENTAL PROTECTION AGENCY
- U.S. DEPARTMENT OF THE INTERIOR
- ATTORNEY GENERAL

INVESTIGATIONS

- TWO TRACKS
- PROGRAMATTIC
- EXECUTIVE BRANCH
- HOUSE RULES REVEAL STRATEGY

REGULATORY

- WIIN STUDIES IMPLEMENTATION
- WOTUS RULE
- EXECUTIVE ORDERS



Joel Pett Editorial Cartoon used with the permission of Joel Pett and the Cartoonist Group. All rights reserved.



Washington Update

PRESENTED TO
BOARD OF DIRECTORS
EAST BAY MUNICIPAL UTILITY DISTRICT
OAKLAND, CALIFORNIA

ENS Resources, Inc.
1901 Pennsylvania Avenue, N.W.
Suite 1005
Washington, D.C. 20006
JANUARY 8, 2019

Water Supply Update

Board of Directors Meeting

January 8, 2019

Water Supply Briefing



- Water Year 2018 Review
- Current Water Supply Conditions



Water Year 2018 Review



Upper Mokelumne Precipitation:	43.1" (48.3" avg)
Snow pack water content (max):	16.4" (31.8" avg)
Local Precipitation:	17.4" (26.8" avg)
Total unimpaired runoff:	590 TAF (740 avg)
End of Water Year Storage:	630 TAF

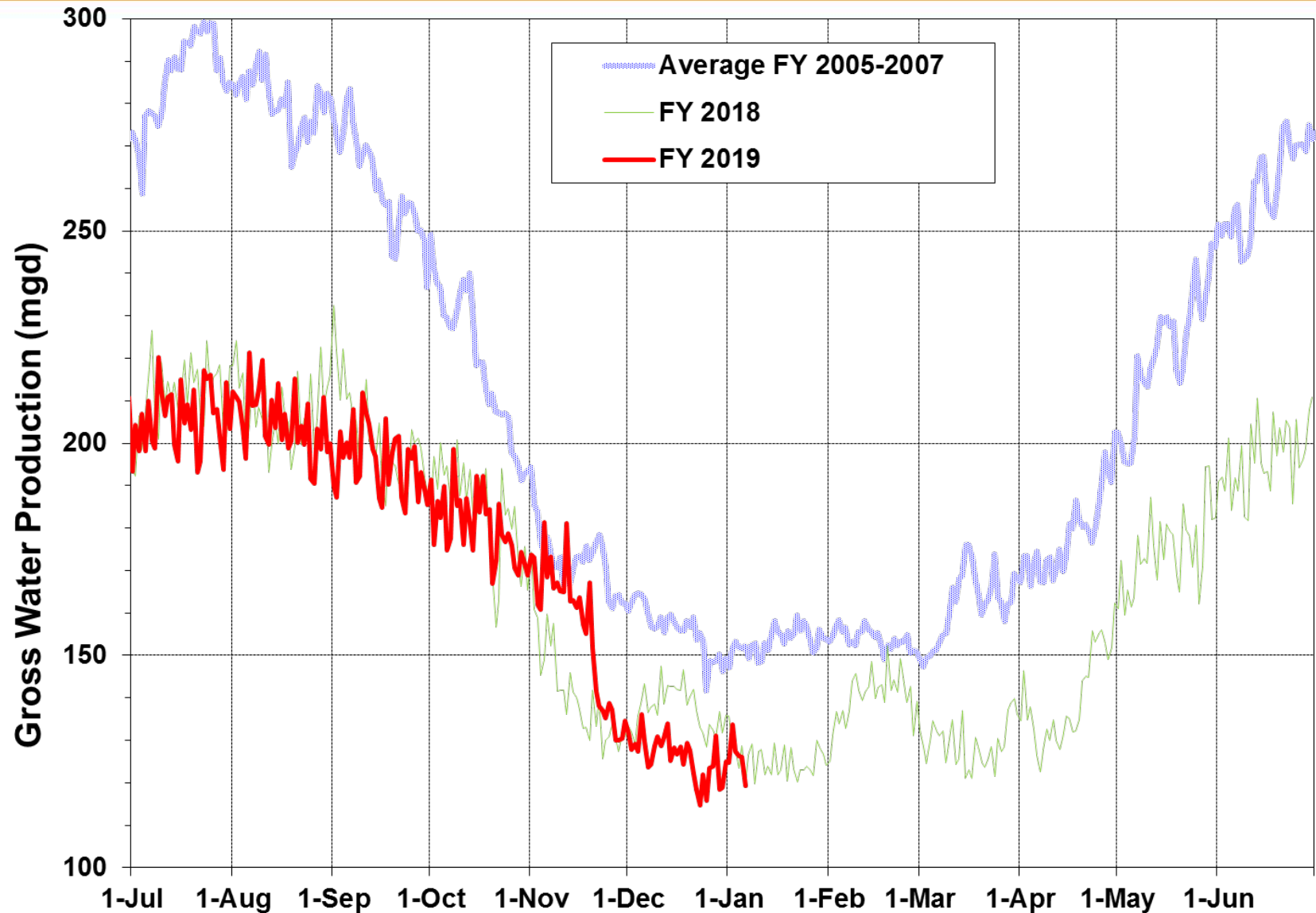


WATER YEAR 2019

CURRENT CONDITIONS

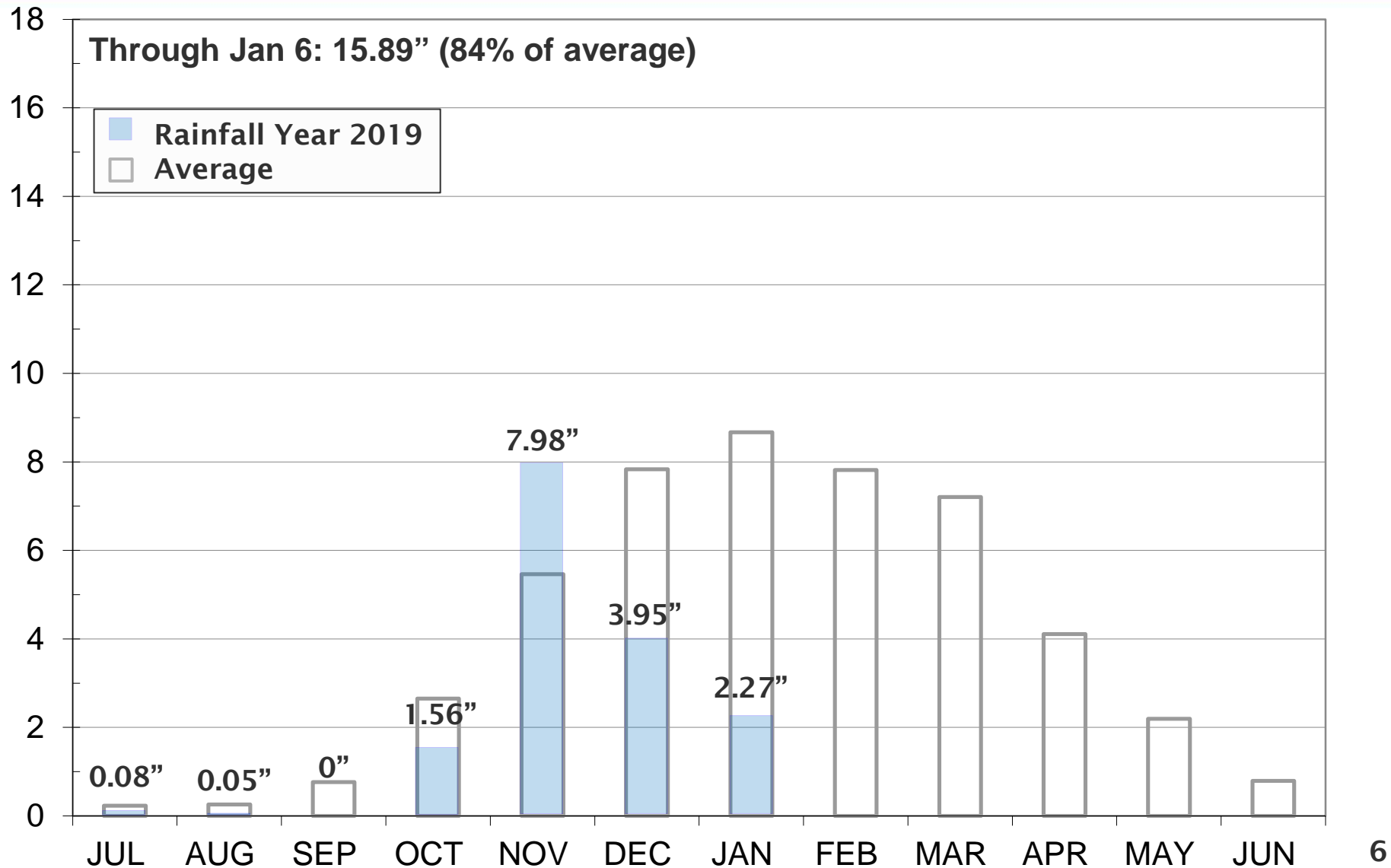
Current Water Supply

Gross Water Production



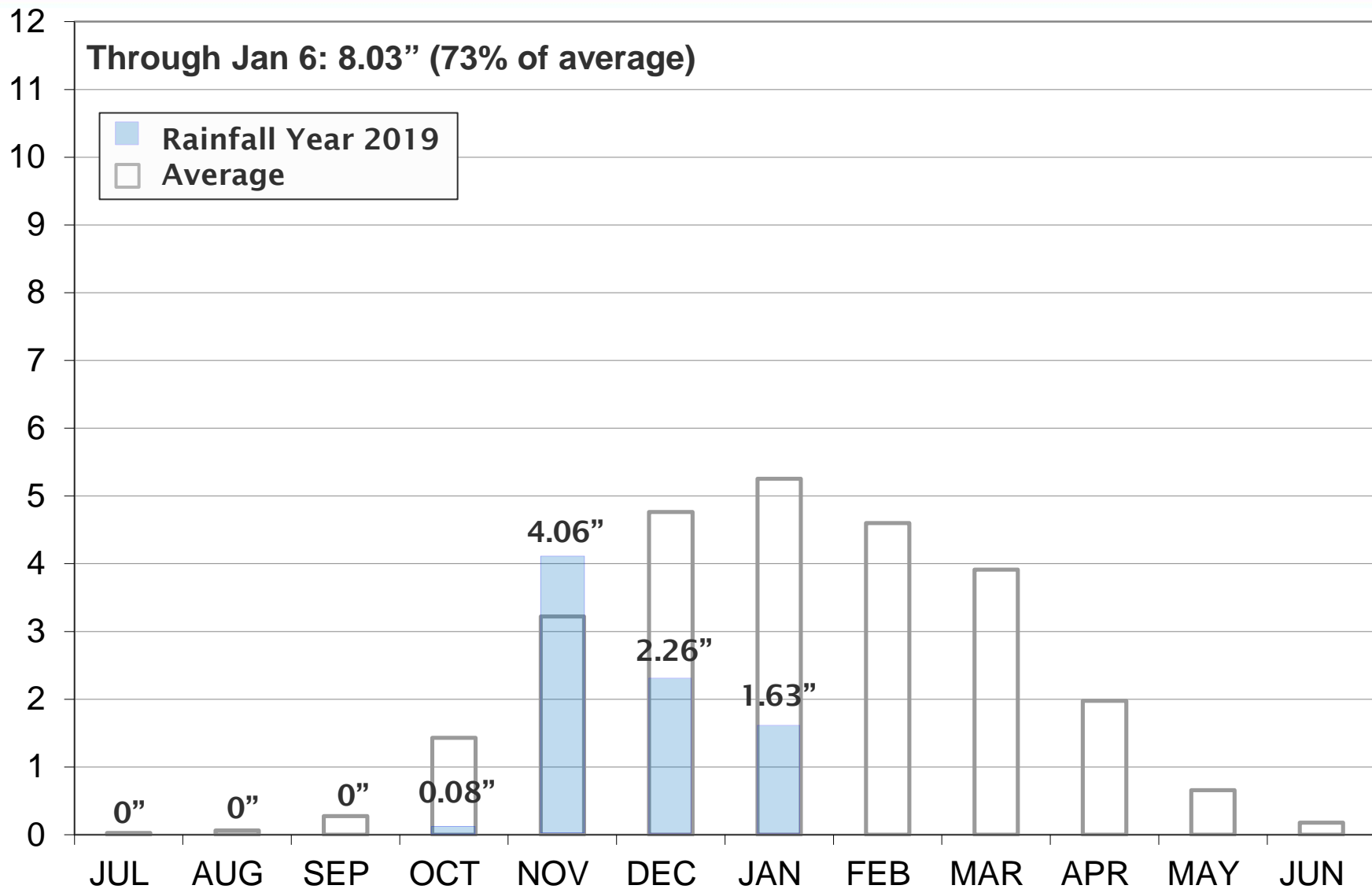
Current Water Supply

Mokelumne Precipitation



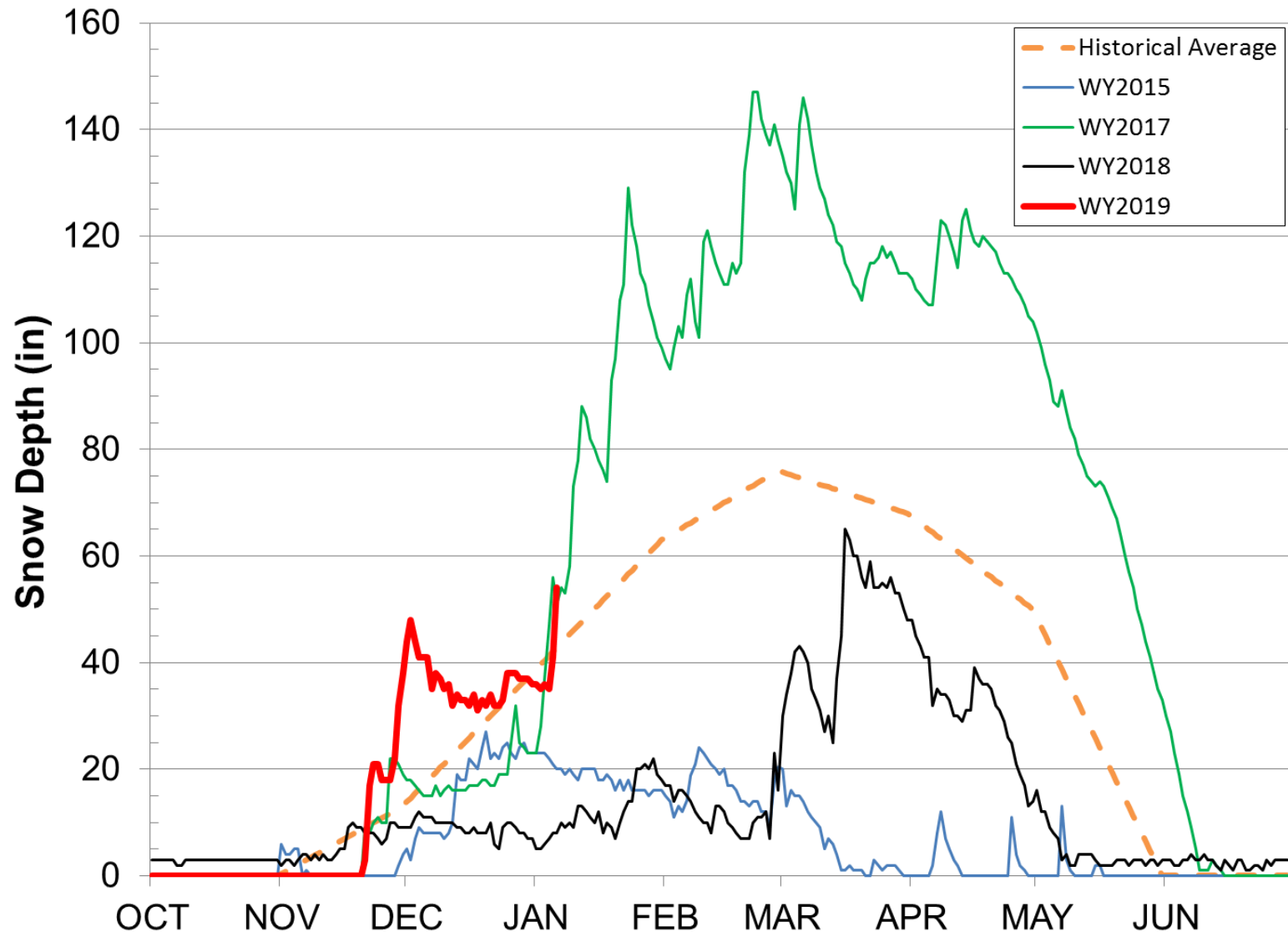
Current Water Supply

East Bay Precipitation



Current Water Supply

Caples Lake Snow Depth



Current Water Supply

Snow



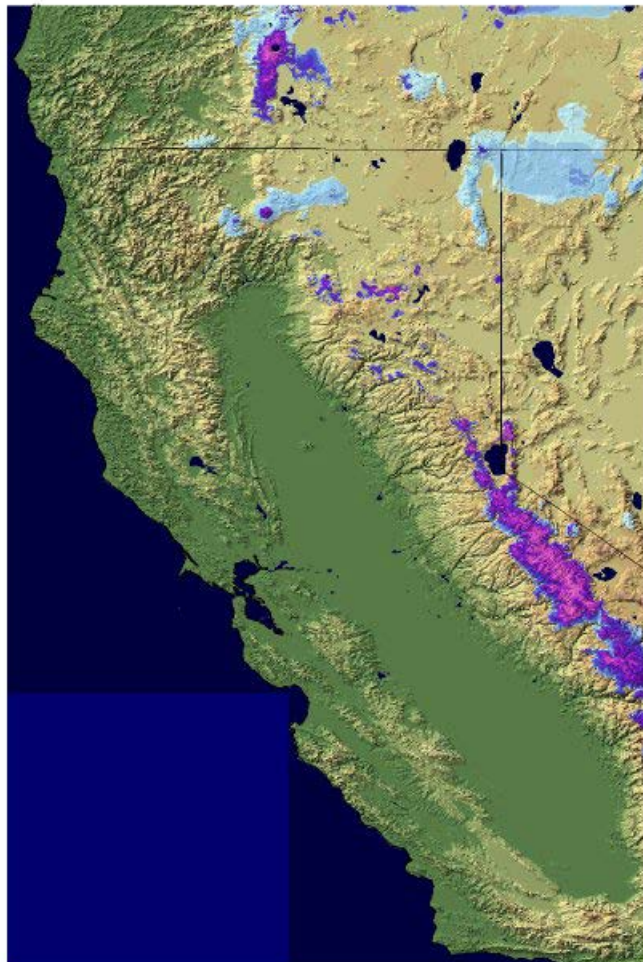
As of Jan. 6, 2019	Cumulative Precipitation	% of Average
Caples Lake Snow Depth	54"	126%
Caples Lake Snow Water Content	14.5"	115%

California Water Supply

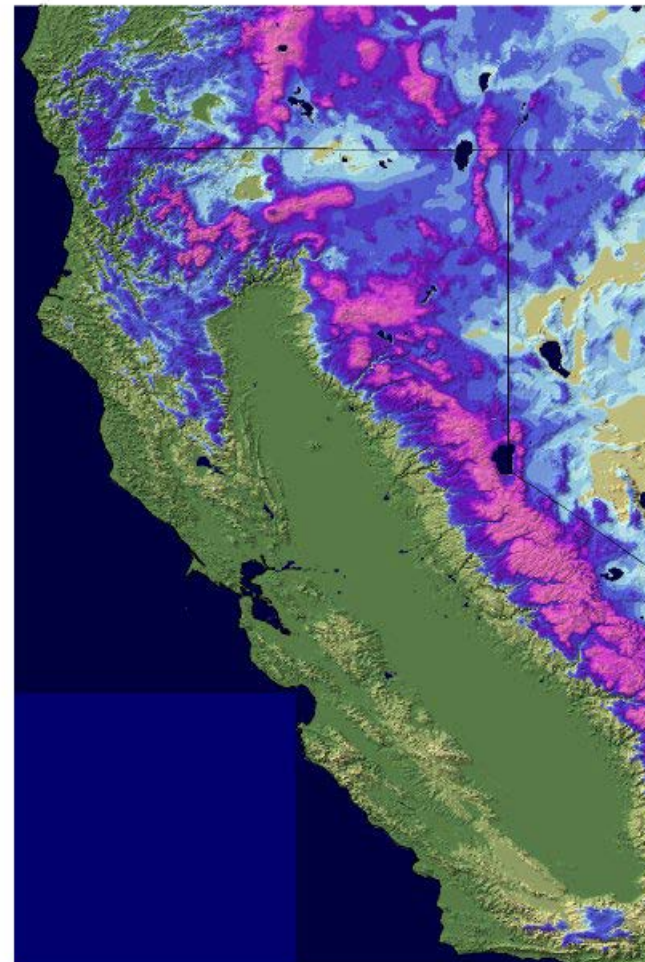
Snow Water Equivalent



January 7, 2018



January 7, 2019



Current Water Supply

Reservoir Storage



As of 1/6/2019	Current Storage	Percent of Average	Percent of Capacity
Pardee	183,330 AF	102%	90%
Camanche	309,910 AF	120%	74%
East Bay	109,760 AF	90%	73%
Total System	603,000 AF	108%	78%

Questions ?

