



EAST BAY MUNICIPAL UTILITY DISTRICT

**Public Hearing
Main Wastewater Treatment Plant
(MWWTP)
Yerba Buena Access Road Acquisition**

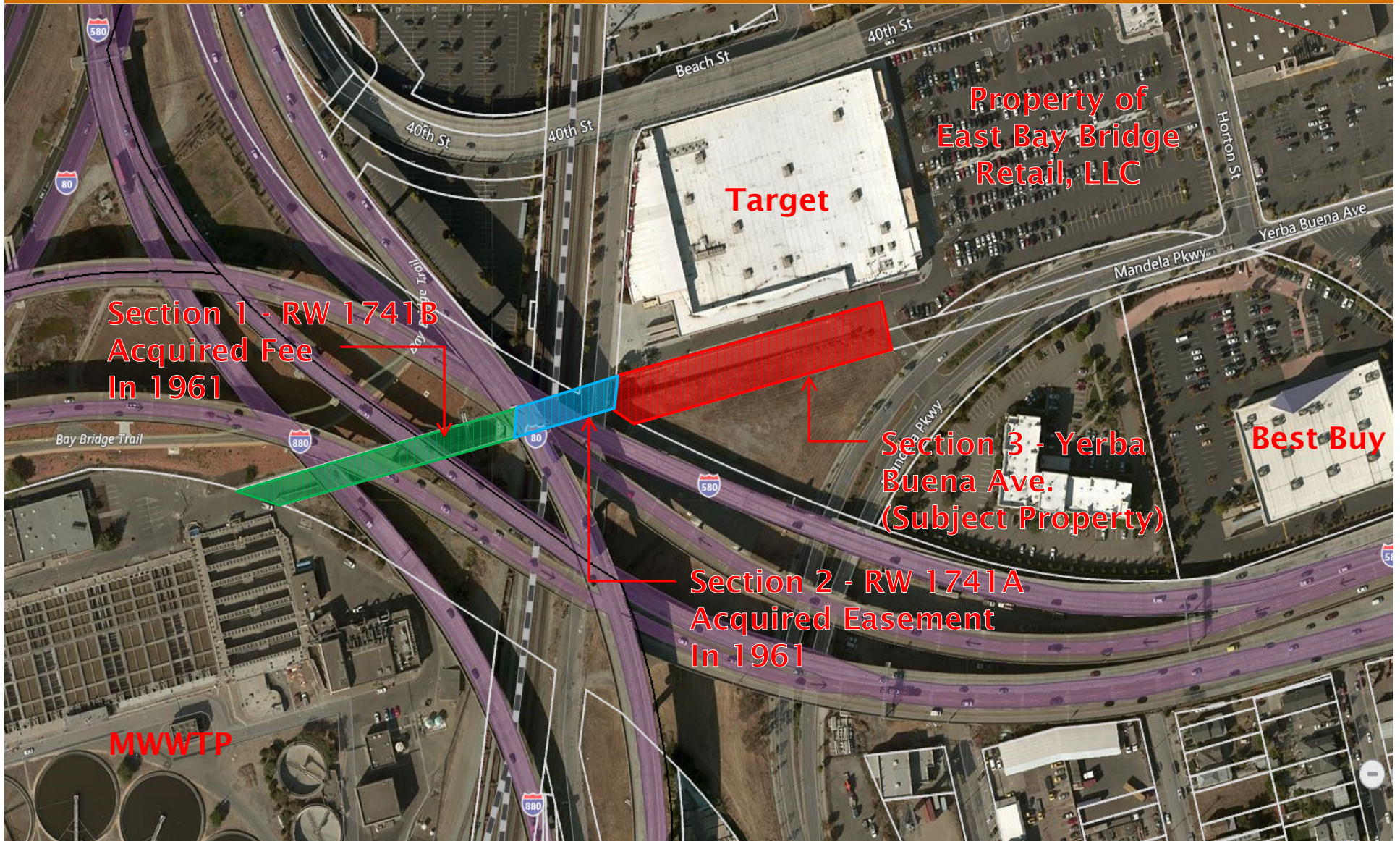
Board of Directors
December 11, 2018

Road Access Gates to MWWTP



Three access gates for employees, contractors, and emergency service personnel

Existing Yerba Buena Access Road Property Rights



Project Necessity



- Yerba Buena Access Road provides reliable routine and emergency access,
- Without formal property rights the District is at risk of losing a vital access,
- No other alternative to access the MWWTP (under-rail crossing), and
- Road is fenced and only used by the District (no public use is allowed)

Project Necessity (con't)



- Would not serve any public benefit in the future
- No impact on the development or owner's development rights
- Just compensation offer has been made



Recommended Board Action



- Adopt a Resolution of Necessity authorizing staff to file eminent domain action

QUESTIONS?



EAST BAY MUNICIPAL UTILITY DISTRICT

Leland Reservoir Replacement Project

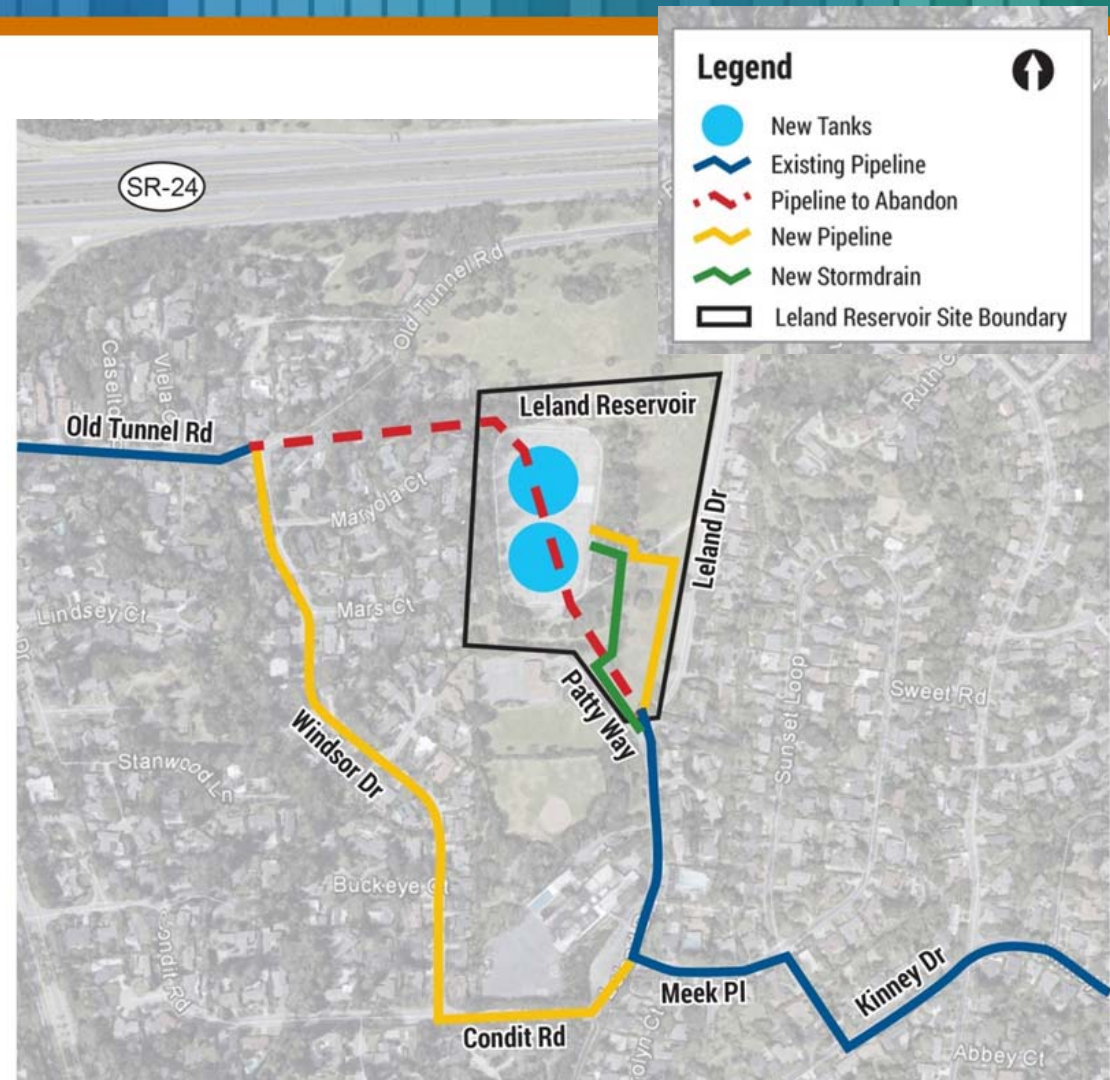
Final Environmental Impact Report and Project Approval

**Board of Directors
December 11, 2018**

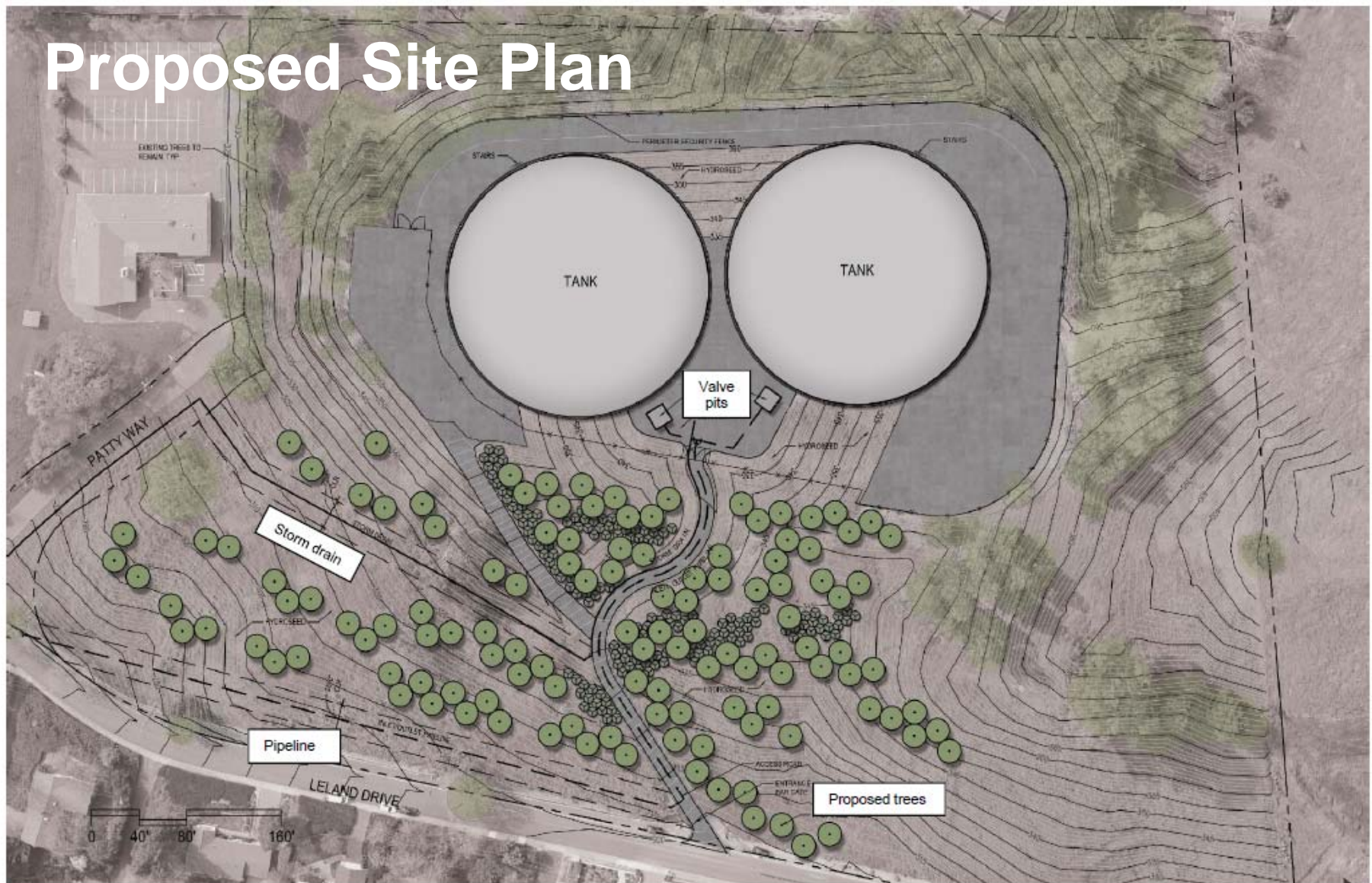
Project Overview and Purpose



- Relocate inaccessible critical transmission pipeline
- Replace existing open cut with two 8 MG concrete tanks
- Construct new stormdrain
- Replace aging infrastructure
- Improve water quality operations
- Improve domestic and emergency water service reliability



Proposed Site Plan



Source: RHAA Landscape Architecture + Planning, 2018



LELAND RESERVOIR - FINAL EIR
 EAST BAY MUNICIPAL UTILITY DISTRICT
1048 LELAND DRIVE | 15 YEAR PROJECTION
 JUNE 2018



Draft EIR Analyses

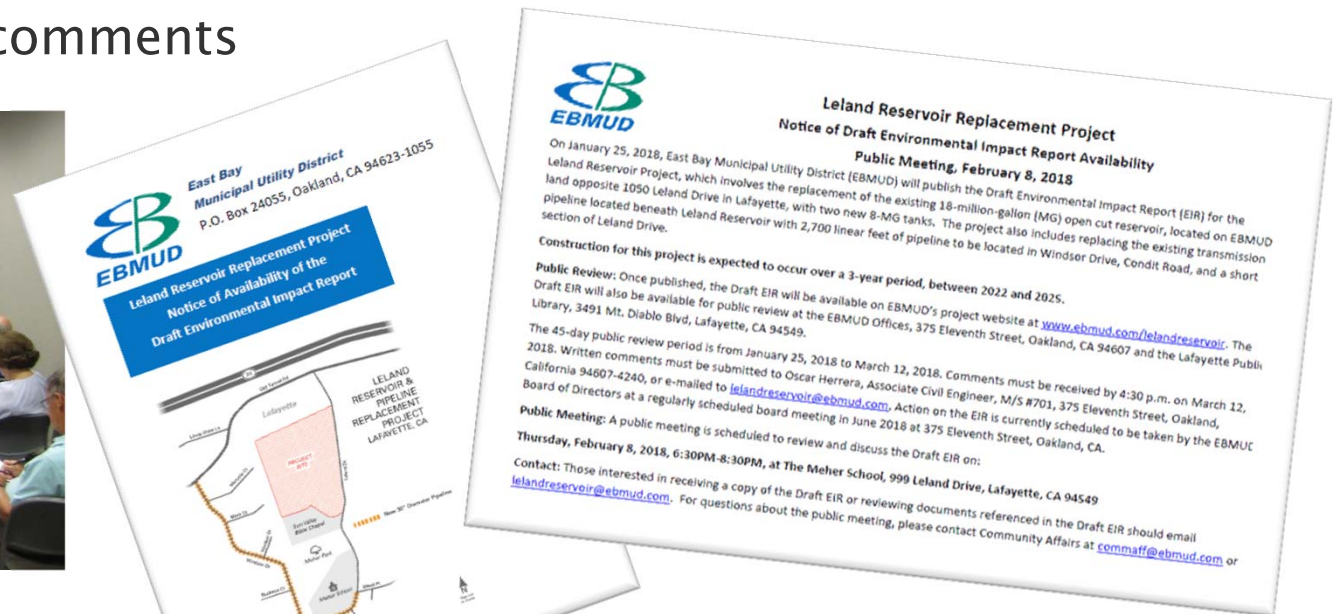


Environmental Factors	Less than Significant	Less than Significant with Mitigation	Significant and Unavoidable
Aesthetics		✓	
Air Quality	✓		
Biological		✓	
Cultural	✓		
Energy	✓		
Geology	✓		
GHGs	✓		
Hazards		✓	
Hydrology	✓		
Noise			✓
Recreation	✓		
Traffic		✓	

EIR Public Outreach



- 210 mailers sent
- 1 public meeting - February 8, 2018
 - 30 comments recorded
- 17 comment letters and e-mails
 - 97 individual comments



Draft EIR Comments



- Visual impacts
- Tree removal and planting
- Construction hours and noise
- Advance notification
- Construction truck routes
- Temporary road closures
- Storm drain sizing
- Street paving
- Traffic analysis

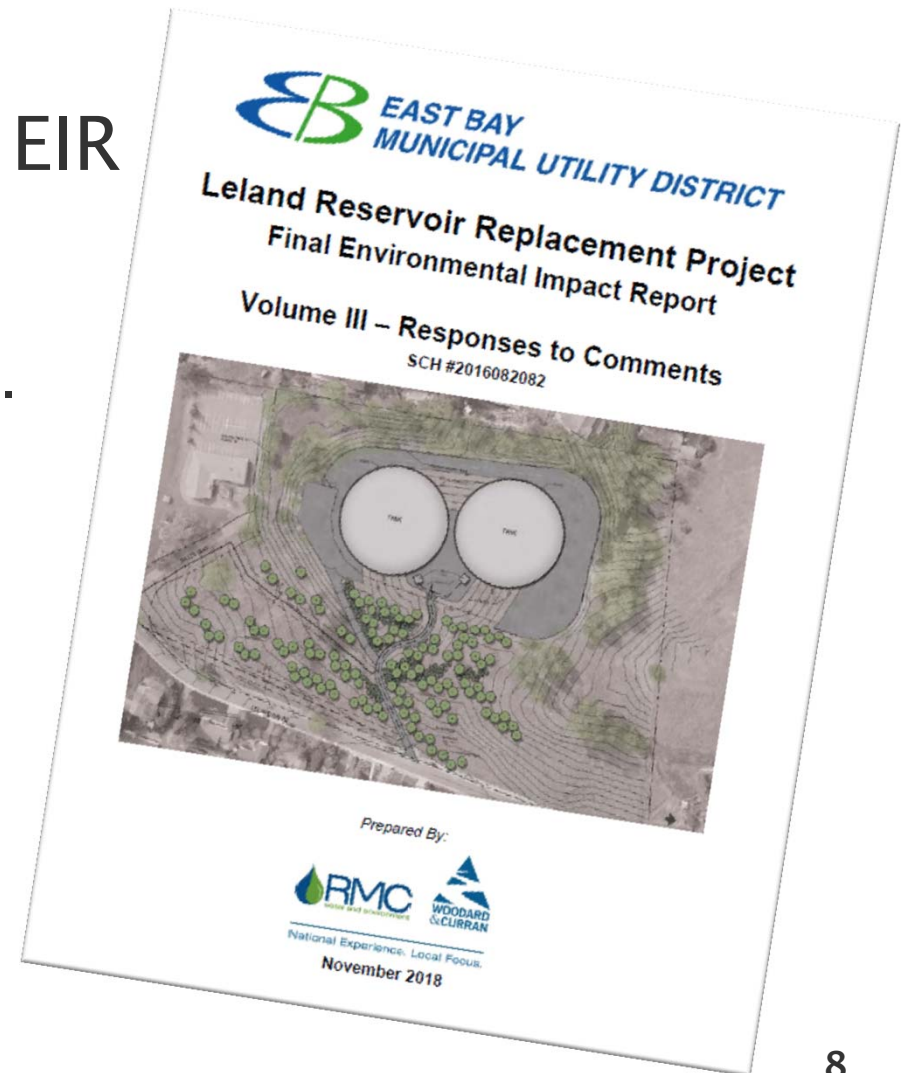


Final EIR



No substantial changes to EIR

- Revised typical construction start time from 7 a.m. to 8 a.m.
- Additional tree planting and changes to fencing type and location



Schedule and Next Steps



- Draft and Final EIR
 - January 2018 to November 2018
-

Completed

- Board Action on Final EIR
 - December 2018
- Design Phase
 - 2022 to 2024
- Construction Phase
 - 2024 to 2027

Next Steps


Recommended Action



- Certify the Final EIR for the Leland Reservoir Replacement Project
- Make Findings and Statement of Overriding Considerations in accordance with CEQA
- Adopt the Mitigation, Monitoring, and Reporting Plan in accordance with CEQA
- Adopt the Practices and Procedures Monitoring and Reporting Plan
- Approve the Leland Reservoir Replacement Project

Questions





BE IT FURTHER RESOLVED that as part of Project implementation, the General Manager is hereby directed to take such actions as shall be necessary to ensure that the Project landscape plan set forth in the Final EIR is implemented to achieve the same or a similar level of screening of the Project tanks as depicted in the Final EIR's post-construction visual simulations.

Proposed Revisions to Watershed Rules and Regulations

December 11, 2018

Watershed Rules and Regulations - Overview



- Watershed Rules & Regulations govern activities for East Bay and Mokelumne Watersheds.
- Used by Rangers and Law Enforcement to protect District resources and promote a safe, positive recreational experience.
- Typically reviewed and updated every five years, more frequently if needed.
- Last update took place in May, 2014.

Watershed Rules and Regulations – Key Changes



- Smoking Prohibitions
- Prohibiting Glass Containers along Camanche Shoreline
- Lifting prohibition on Bicycles on some trails

Watershed Rules and Regulations – Key Changes



- Smoking Changes:

It shall be unlawful to:

- To smoke on East Bay Area watershed lands or reservoirs except in areas designated and posted “Smoking Permitted”.
- To smoke on Mokelumne Area watershed lands or reservoirs except in permitted campsites and paved parking lots, and other areas designated and posted “Smoking Permitted”.

Watershed Rules and Regulations – Key Changes



The East Bay Regional Park District
is now

SMOKE FREE



Smoking or vaping of any substance is
not allowed anywhere in the parks,
except in overnight campsites.

Ordinance 38.

Need help quitting?
Call 1-800-NOBUTTS
or visit www.nobutts.org

East Bay 
Regional Park District
www.ebparks.org

Watershed Rules and Regulations – Key Changes



- Prohibiting Glass Containers:

It shall be unlawful to:

- To bring any glass bottle or glass container into any Camanche Day Use area where swimming is allowed, any area below the high water mark of Camanche Reservoir that is not defined as a campsite, or any other area at any facility that has been posted “No Glass”.
- Rangers respond to 70-90 medical aids annually and of these, there are usually 2-3 foot injuries caused by broken glass below the waterline. We suspect that there are many more that go unreported.

Watershed Rules and Regulations – Key Changes



- Bicycles allowed on certain trails:

It shall be unlawful

- To operate any bicycle or similar conveyance on any watershed trail **except as specifically provided on the Pinole Valley Multi-Use Trail and the Eagle's Nest Multi-Use Trail in the East Bay Watershed.**
- To leave the designated watershed trails, to leave trail gates open, or to disturb, molest or interfere with livestock or wildlife within any watershed. **In areas approved for such use, bicycles shall not leave the improved portion of the trail.**

Watershed Rules and Regulations – Key Changes



A bicyclist enjoying the Pinole Valley Multi-Use Trail.



Watershed Rules and Regulations



- Next Steps

- Summary of changes and link to the full document is posted in local newspapers
- Updated Rules & Regulations distributed to cooperating agencies and posted in recreation areas with new brochures printed for the public