

Lower Mokelumne River Project

FERC Project No. 2916



Technical Work Group (TWG) Meetings
Cultural Resources
August 25, 2025



AGENDA



- Welcome and Introductions
- FERC Schedule Review
- Review Preliminary Draft Study Plans
- Review TWG member comments and questions
- Action Items, Schedule and Next Steps



Welcome & Introductions



Lower Mokelumne Relicensing Team

EBMUD Project Management Team

Priya Jain

Brad Ledesma

Joe Tam

Karen Donovan

EBMUD Resource Leads

Chuck Beckman

Deborah Preciado

Sami Harper

Consultant Team

Kleinschmidt

Shannon Luoma

Fatima Oswald

Jennifer Polardino



Meeting Purpose and Objectives

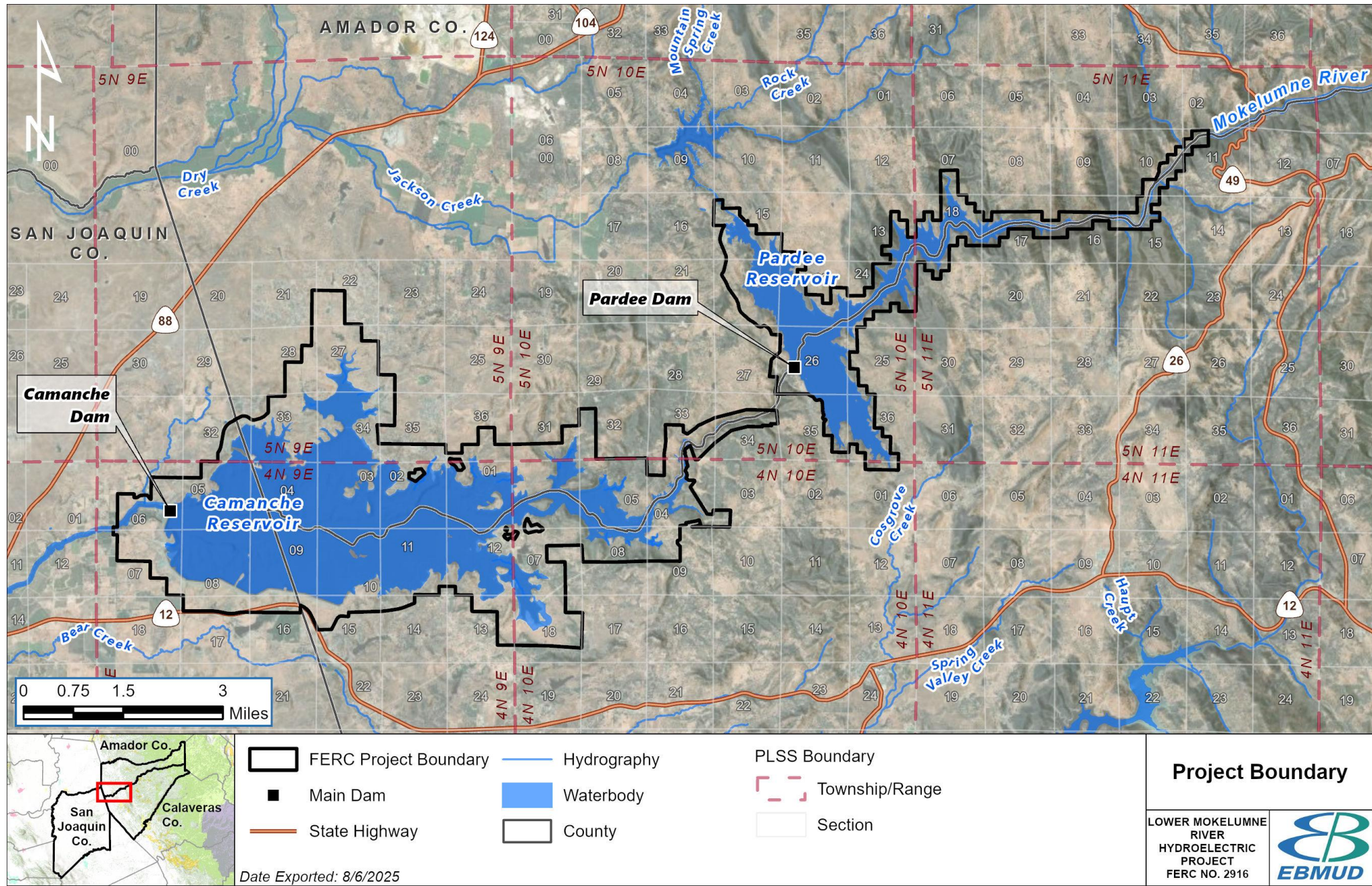
Review the preliminary draft study plans related to Cultural and Tribal resources:

- Cultural Resources Study Plan
- Tribal Ethnography Study Plan

Lower Mokelumne River (FERC Project No. 2916) Project Overview



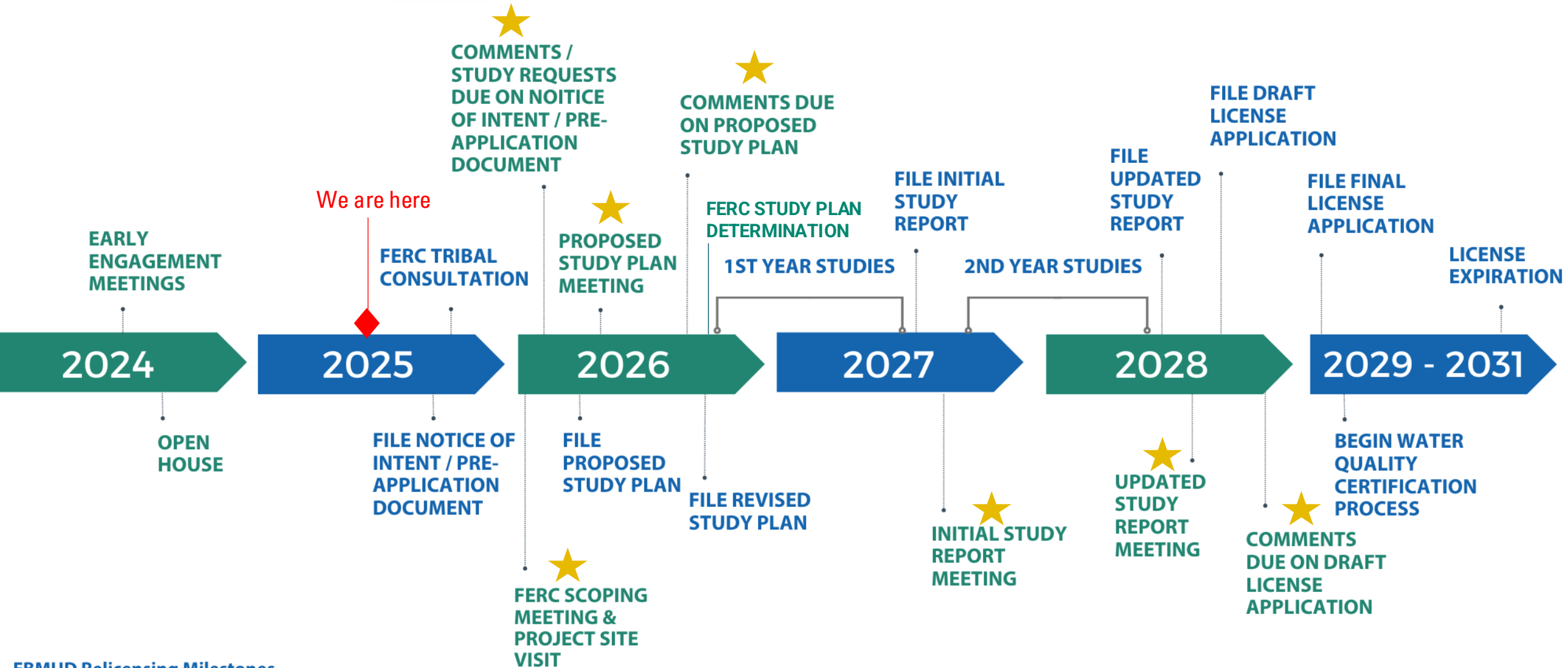
Lower Mokelumne River Project (P-2916)





RELICENSING SCHEDULE

Lower Mokelumne River Project, FERC No. 2916



EBMUD Relicensing Milestones

Interested Parties Involvement Opportunities

★ Comment Opportunities
(not all are shown)

Cultural Participation Opportunities

- FERC will initiate Tribal Consultation within 30 days of filing the PAD and NOI
- Comment opportunities throughout the FERC relicensing process
- Informal communication with EBMUD anytime – phone, email, meetings
- Specific information relating to traditional cultural properties (TCPs), historic properties, or other privileged data will be maintained as confidential

Why Conduct Studies?

- The Proposed Study Plan (PSP) is a FERC requirement under the ILP
- Provide FERC the necessary information to conduct their analysis
- Identify pertinent & potential Project issues
- Lay groundwork for future license conditions & PM&Es

18 CFR § 5.11 Potential Applicant's proposed study plan and study plan meetings.

(a) Within 45 days following the deadline for filing of comments on the pre-application document, including information and study requests, the potential applicant must file with the Commission a proposed study plan.



FERC's 7 Study Guide Criteria

- 1- Goals & Objectives
- 2&3 - Relevant Resource Management Goals & Public Interest Considerations
- 4 - Existing Information & Need for Additional Information
- 5 - Project Nexus
- 6 - Proposed Methodology
- 7 - Level of Effort & Costs

Cultural Resources Study



Cultural Resources – Archaeology & Built-Environment Resources Study

Existing Data

- State and Federal Database Reviews
- License Compliance Documents
- EBMUD Data and Publications
- Scientific Literature
- 1950/1960's Reconnaissance Surveys and Excavations
- 2019 Cultural Resources Management Plan (CRMP; DeBaker and Siskin)
- 2023 Historic Property Survey (Demarais et al.)

Existing Environment (Archaeology)

- 175 archaeological sites within the study area (122 within the FERC Project Boundary).
- The 175 sites include:
 - 114 precontact sites
 - 25 dating to the historic period
 - 8 w/precontact and historic-period components, and
 - 28 w/no info avail - studies in progress at time of records searches.

Existing Environment (Built-Environment)

- 54 formally recorded built-environment resources
- 43 additional unrecorded potential properties
- Two National Register-listed historic properties:
 1. Middle Bar Bridge, 2. Main Pardee Dam and Powerhouse, Jackson Creek Spillway, Pardee South Spillway

To the extent feasible, archaeological and built-environment resources field studies will be coordinated with each other and with other Project-related studies, in particular the Tribal resources study and, information shared as appropriate.

Potential Study – Cultural Resources Study

Goals & Objectives

1. To meet FERC compliance requirements under Section 106 of the National Historic Preservation Act (NHPA), as amended, by determining if Project-related activities and public access will have an adverse effect on historic properties; and
2. To identify all archaeological sites and built environment resources within the Area of Potential Effects (APE) and assess for eligibility under NHPA.

Potential Study – Cultural Resources Study

Geographic Scope

The Area of Potential Effect (APE) is the same as the FERC Project Boundary. Additionally, the archaeological study area includes a 0.25-mile buffer around the APE to provide background on a wider range of archaeological resources.

Potential Methodology

- Archaeological Inventory
- Records Search Update and Additional Background Research
- Field Survey
- National Register Evaluation

Tribal Ethnography Resources Study



Cultural Resources – Tribal Ethnography Resources Study

Existing Data

- State and Federal Database Reviews
- License Compliance Documents
- EBMUD Data and Publications
- Scientific Literature
- 1950/1960's Reconnaissance Surveys and Excavations
- 2019 Cultural Resources Management Plan (CRMP; DeBaker and Siskin)

Existing Environment

- No TCPs or other places of religious or cultural significance to Indian Tribes have yet been formally recorded in the study area. These must be identified via Tribal consultation.
- NHPA regulations require that consultation provides the Tribe(s):
 - an opportunity to identify concerns about historic properties;
 - advise on the identification and evaluation of historic properties, including those of traditional religious and cultural importance (TCP);
 - Tribe(s) to articulate views on the undertaking's effects on TCPs; and
 - participate in the resolution of adverse effects.

Native American TCPs, while a type of historic property subject to Section 106 of the NHPA, will be documented via consultation, as described in the Tribal Resources study. (Any non-Native TCPs will be documented as part of the built-environment and/or archaeological inventories.)

Potential Study – Tribal Ethnography Resources Study

Goals & Objectives

- Assist FERC, as its non-federal representative, in meeting its compliance requirements under Section 106 of the NHPA, by determining if relicensing of the Project will have an adverse effect on historic properties, in this case Tribal resources.
- Identify Tribal resources that may be affected by Project O&M.

Potential Study – Tribal Ethnography Resources Study

Geographic Scope

The Area of Potential Effect (APE) is the same as the FERC Project Boundary. The overall proposed Tribal Ethnography Resources Study area, however, encompasses a larger area comprising a 0.25-mile buffer around the APE.

Potential Methodology

- **Archival Research** will 1) provide primary data to create a background American Indian ethnohistory of the Study area; and 2) inform the Tribal resources historic context for the National Register.
- **Meetings with Tribal Governments** Meetings with Tribal governments, administrators or representatives is proposed to provide Project data to Tribal groups, elicit areas of interest, identify appropriate Tribal informants, and establish protocols for conveying information.
- **Interviews** are proposed with Tribal experts to gain an understanding of what is important to them and why.
- **Documentation and Evaluation** Three main categories of Tribal resources are anticipated: 1) Tribal places; 2) TCPs; and 3) Tribal government matters.
- **Coordination with Other Studies** As needed, the Tribal resource expert will assist other resource experts in identifying Tribal resources with connections to their technical study.

Action Items & Next Steps





Next Steps

October 2025 – EBMUD files Pre-Application Document (PAD) with FERC

November 2025 – FERC initiates Tribal Consultation

January 2026 – FERC Project Scoping Meeting

February 2026 – Comments/Study Requests due to FERC (for PAD/Studies)

March 2026 – EBMUD files Proposed Study Plan (PSP) with FERC

June 2026 – Comments due to FERC on PSP

Stay Informed

- Lower Mokelumne Website: EBMUD.com/MokRelicense
- Email: MokRelicense@ebmud.com
- Sami Harper, EBMUD: 510-287-2068
- FERC e-Subscription (docket number “P-2916”) at www.ferc.gov
 - Formal Relicensing begins October 2025 with EBMUD submittal of the Pre-Application Document (PAD)