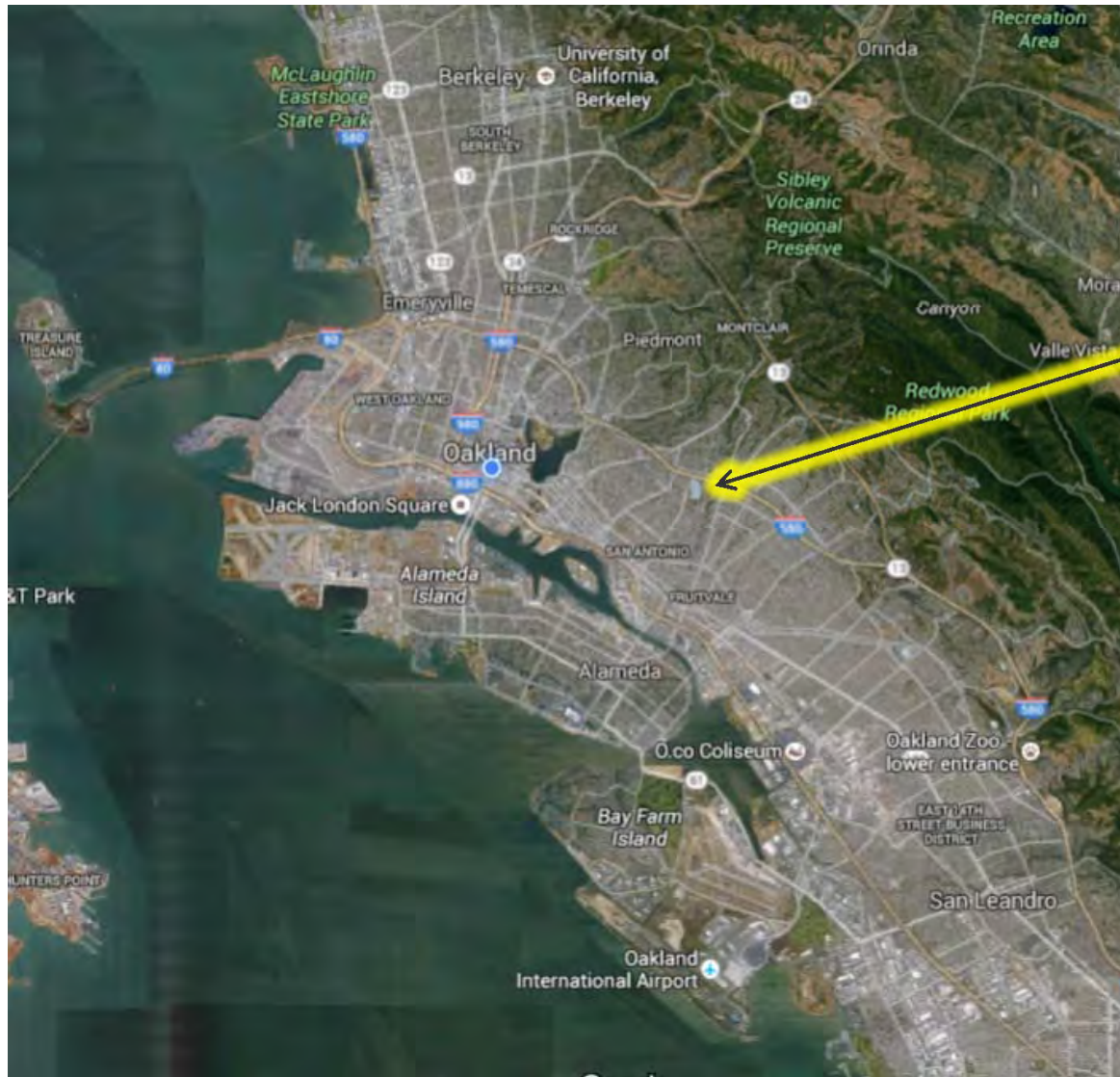


# Central Reservoir Replacement Project

**Pre-Proposal Meeting**  
**July 19, 2016**

DRAFT

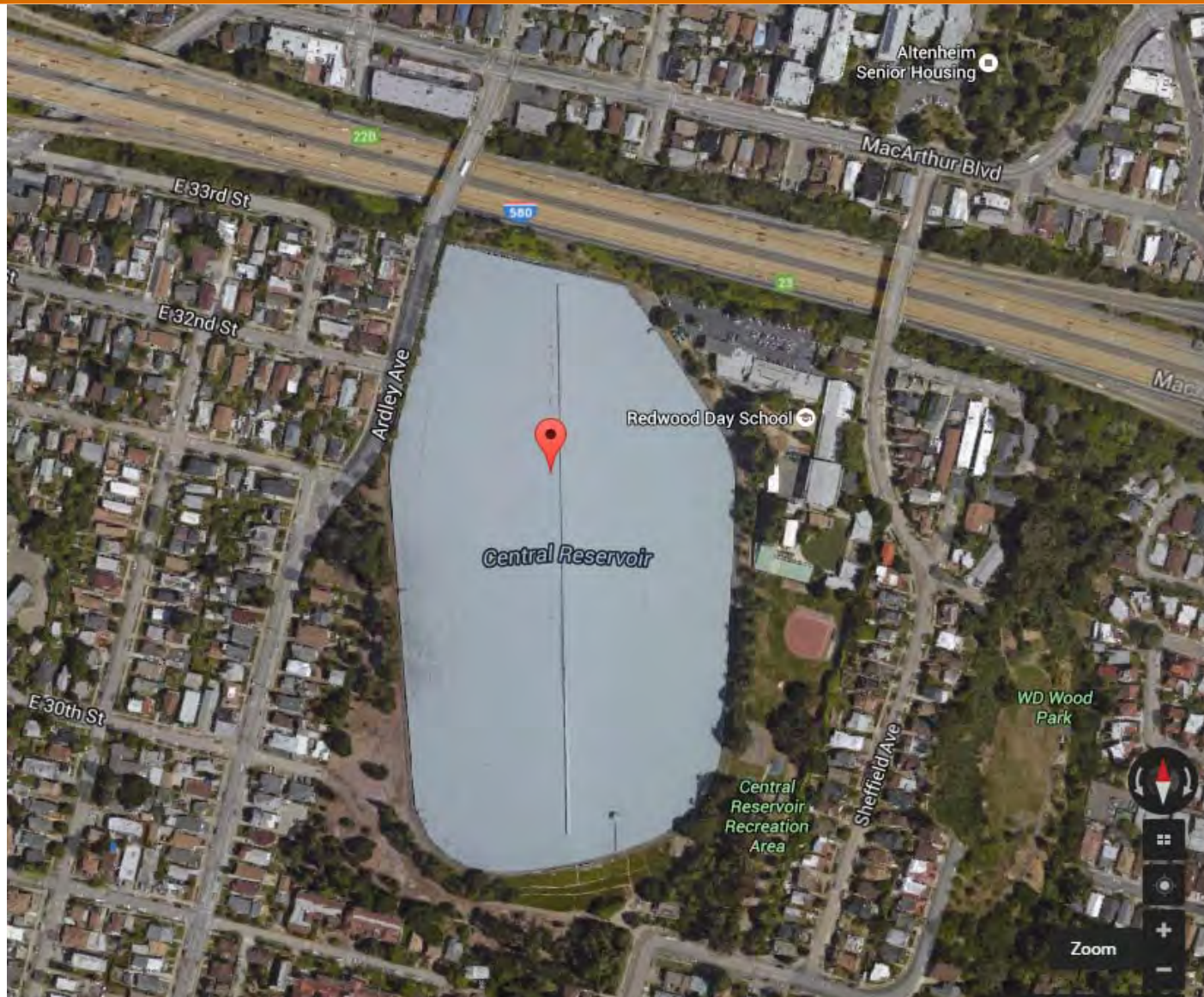
# Project Location



Central  
Reservoir



# Aerial View



DRAFT

# Replacement Project Objectives



- Remove PCBs from liner materials.
- Downsize aging open-cut reservoir.
- Address maintenance issues and concerns.
- Improve system hydraulics and maintain water quality.
- Increase operational flexibility and reliability.
- Minimize environmental impacts and disruption to the community.
- Minimize costs to customers.

DRAFT

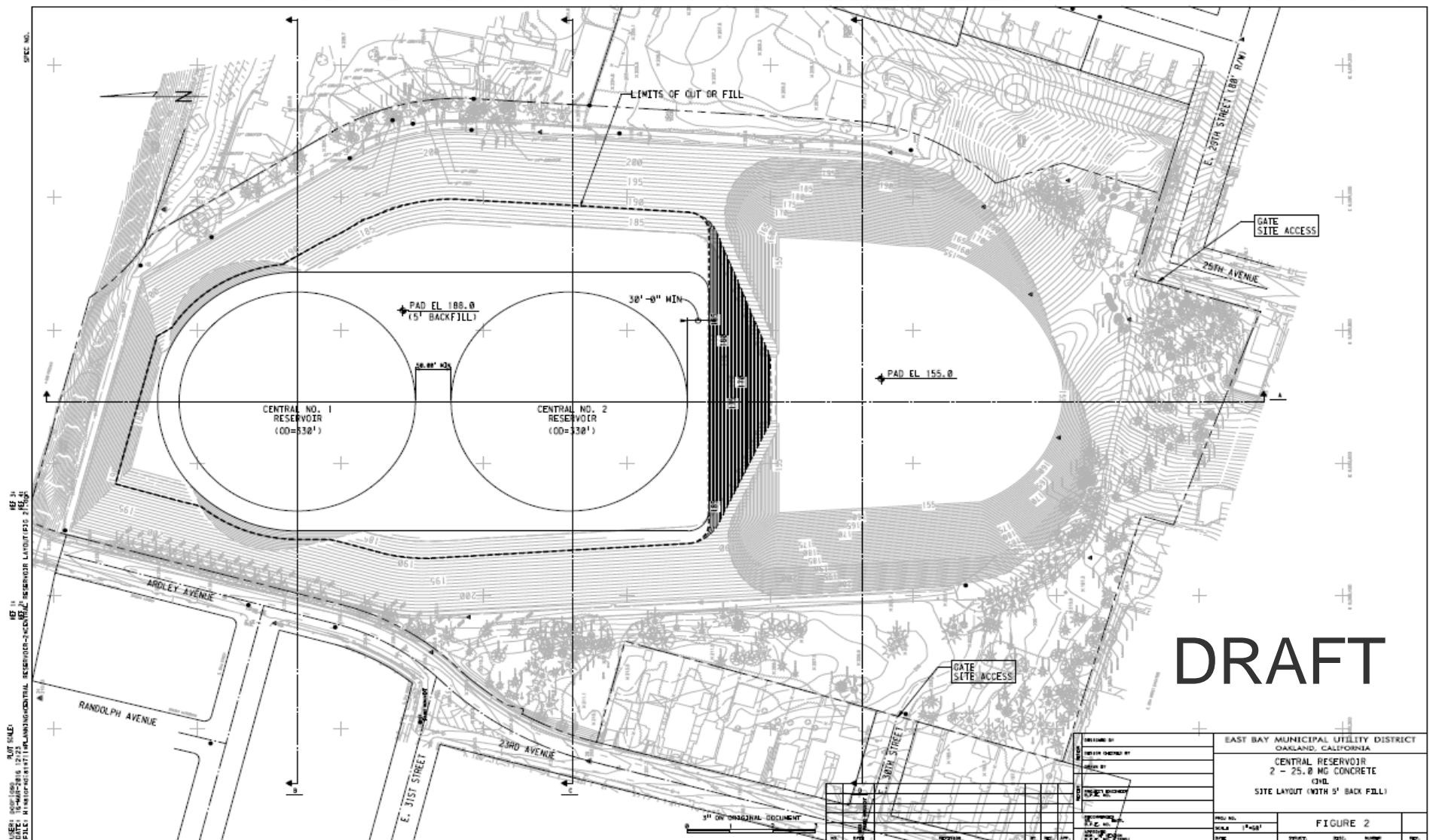
# Replacement Project Description



- **Replace existing 154-MG open cut with new reservoirs within the basin, total operational storage of 50 MG.**
- **Raise existing overflow 20 feet (raise bottom elevation 20-30 feet), matching Dunsmuir & South Reservoirs.**
- **Demolish existing reservoir. Properly dispose of hazardous materials.**
- **Demolish former Materials Lab building on site.**
- **Replace Central RCS.**

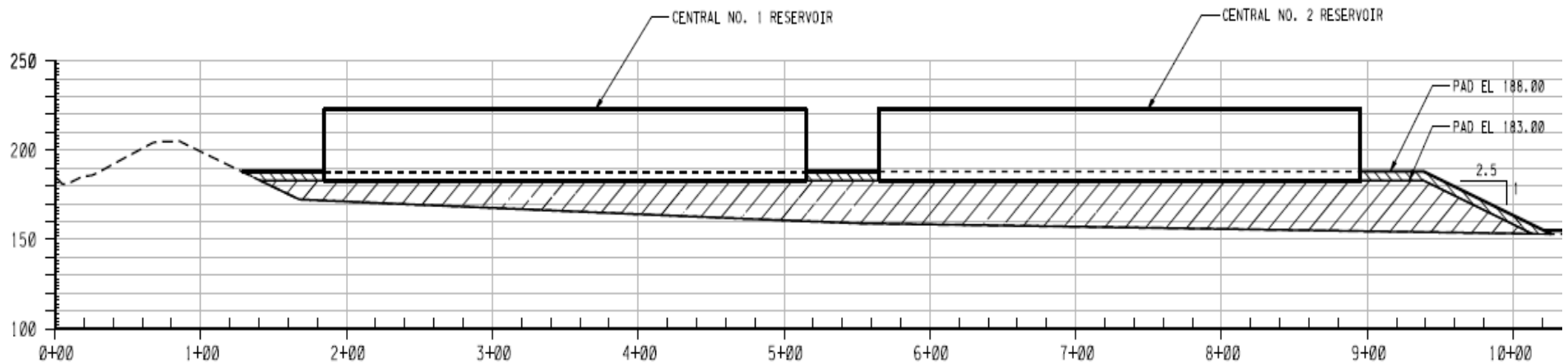
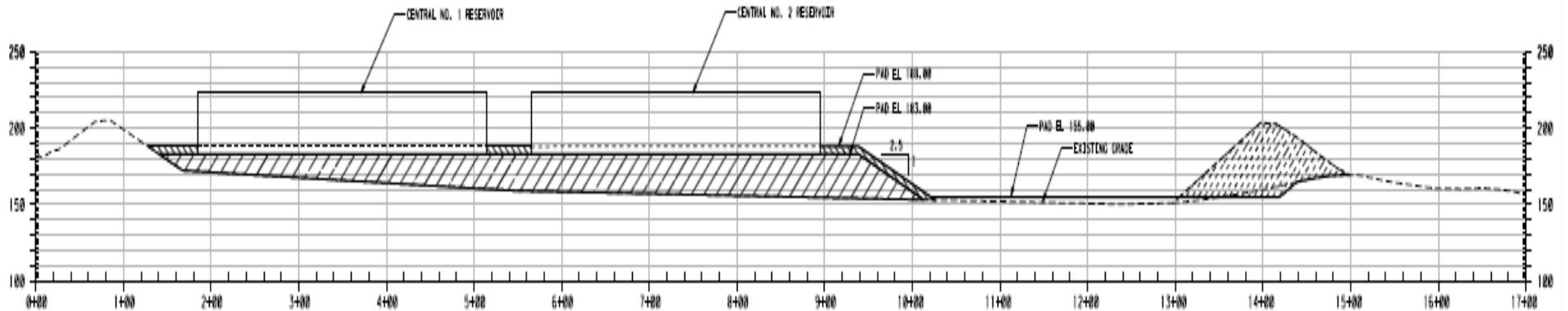


# Superstructure Alternatives: Two Tanks – 25MG



DRAFT

# Superstructure Alternatives: Two Tanks – 25MG

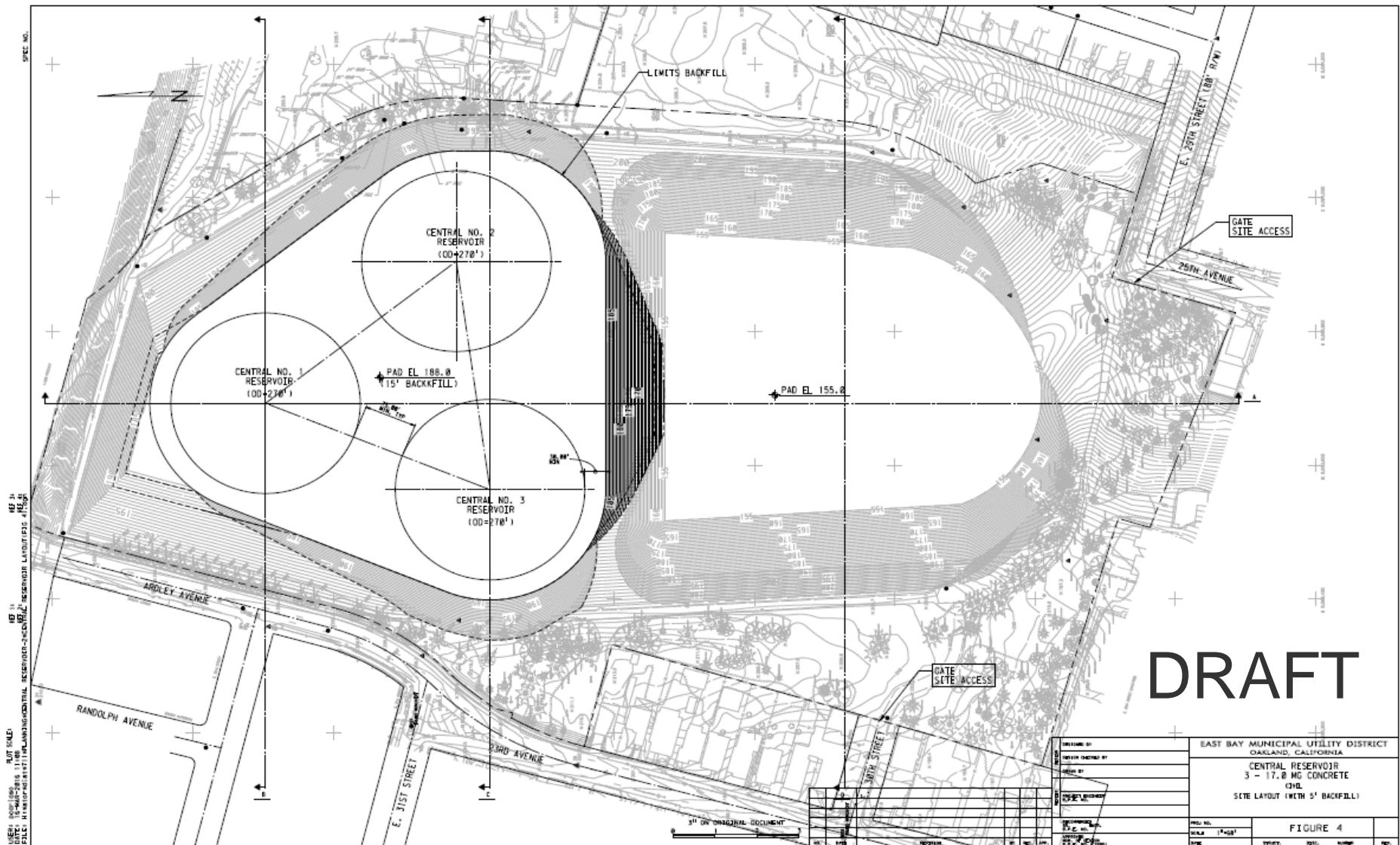


Profiles exclude freeboard and roof height.

**DRAFT**



# Superstructure Alternatives: Three Tanks – 17MG



DRAFT

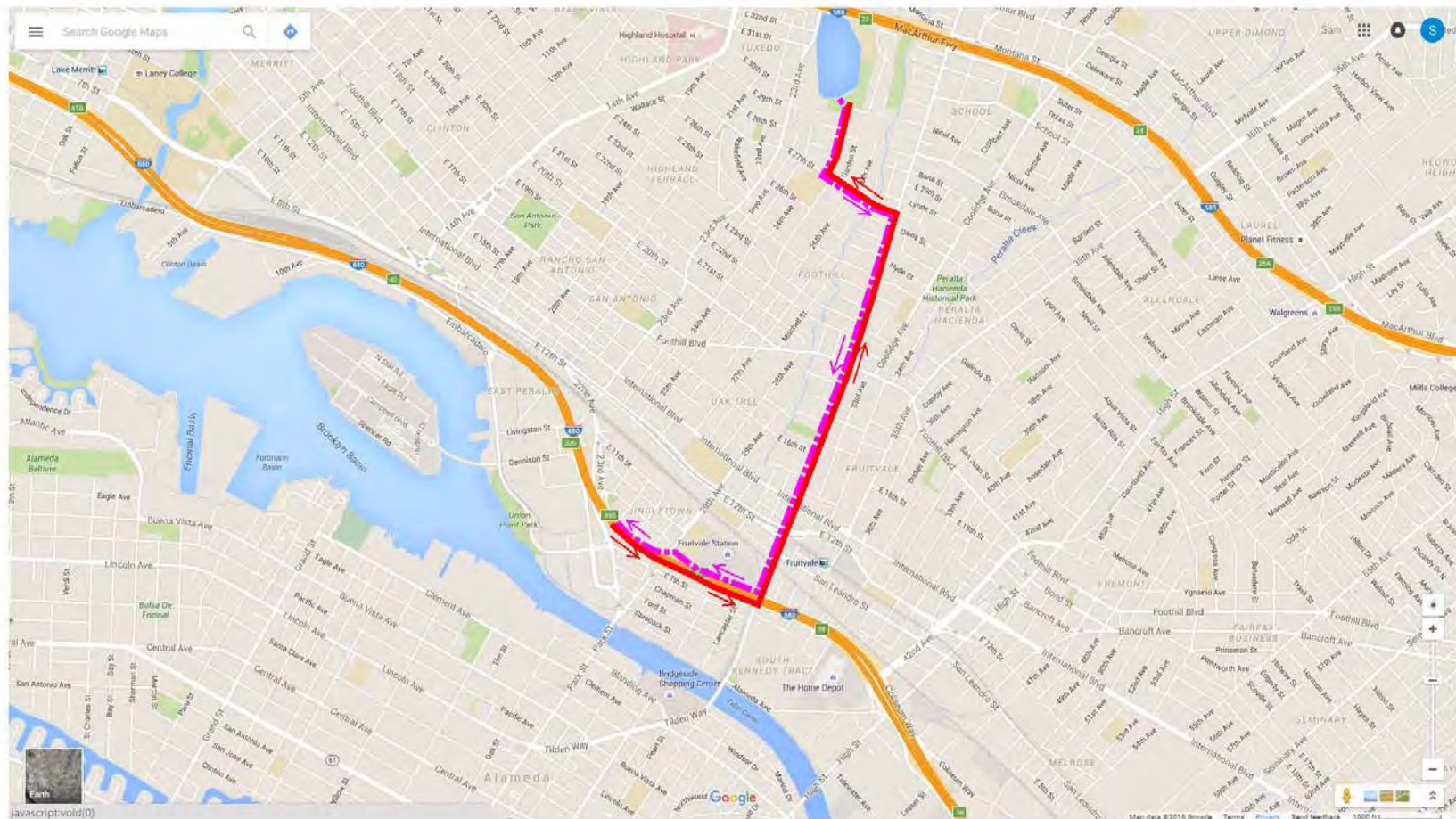


# Potential Truck Routes – I-880



From North - Option 3  
I-880

— Inbound  
- - - Outbound



- Southbound I-880 @ Fruitvale Avenue

DRAFT

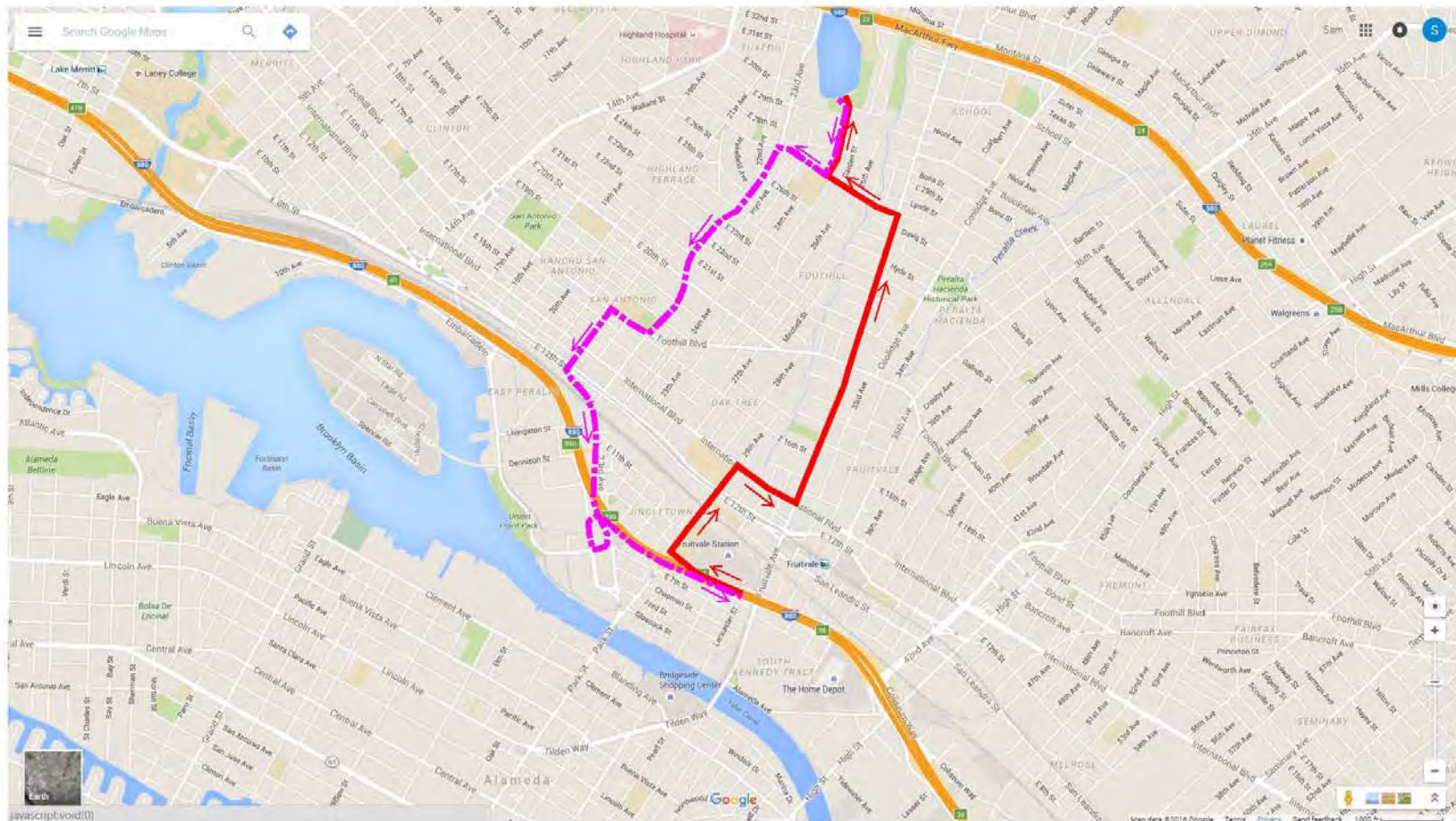


# Potential Truck Routes – I-880



From South - Option 4  
I-880

— Inbound  
— Outbound



- Northbound I-880 @ 23<sup>rd</sup>/29<sup>th</sup> Avenue

DRAFT

# Summary of Truck Trips & Duration



- Truck Trips and duration vary between the different alternatives

Phase	Duration (weeks)	Approximate Truck Trips (Round Trips)	Average Truck Trips (Round Trips) per Day
Demolition	40	3,500	20
Substructure Construction	65 to 105	7,000 - 42,000	15 - 80
Superstructure Construction	60 to 96	1,800 - 4,750	5 - 10

\* Truck trips assume 10 cubic yards or 25-ton capacity per truck



# Project Schedule



Select Preferred Project	July 2016
Update Operations and Maintenance	July 2016
Present Preferred Project to Director of Engineering and Construction	August 4, 2016
CEQA Board Approval / Contract Award	November 8, 2016
Community Outreach and Develop Site Plan	Winter 2016 – Spring 2017
CEQA, Environmental Impact Report	Spring 2017 – Fall 2018
Design	Winter 2018 – Winter 2021
Construction	Spring 2022 – 2025 (TBD)

# CEQA SCOPE OF WORK NOTES

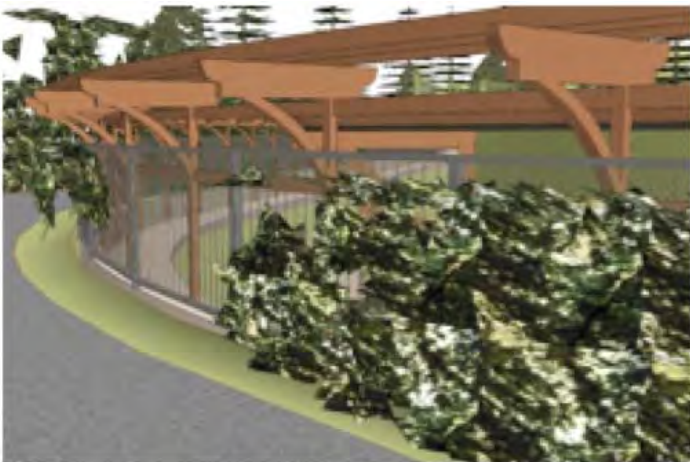


# Arborist Condition Report





# Aesthetics

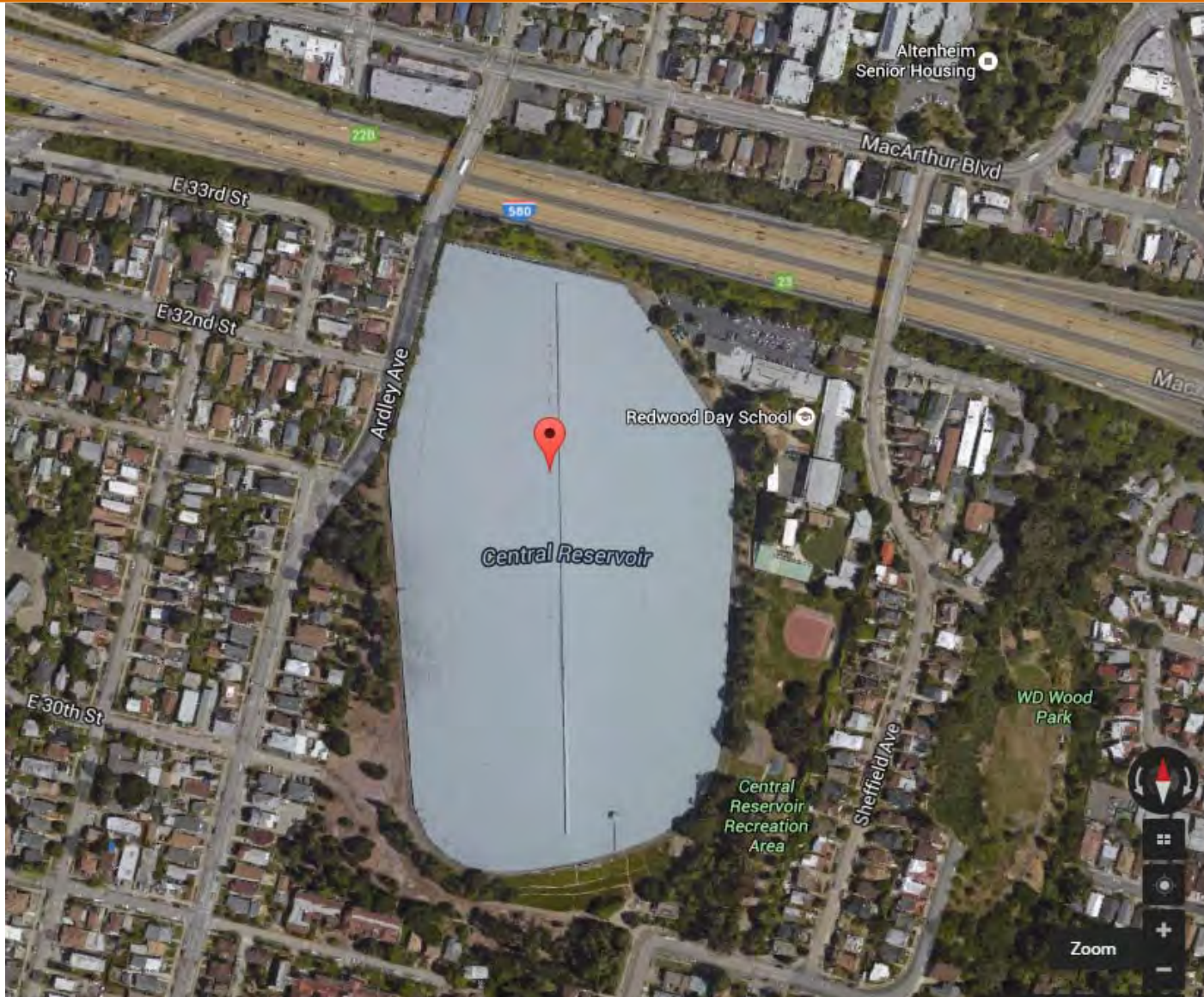


DRAFT

# Virtual Tour



# Virtual Tour



DRAFT



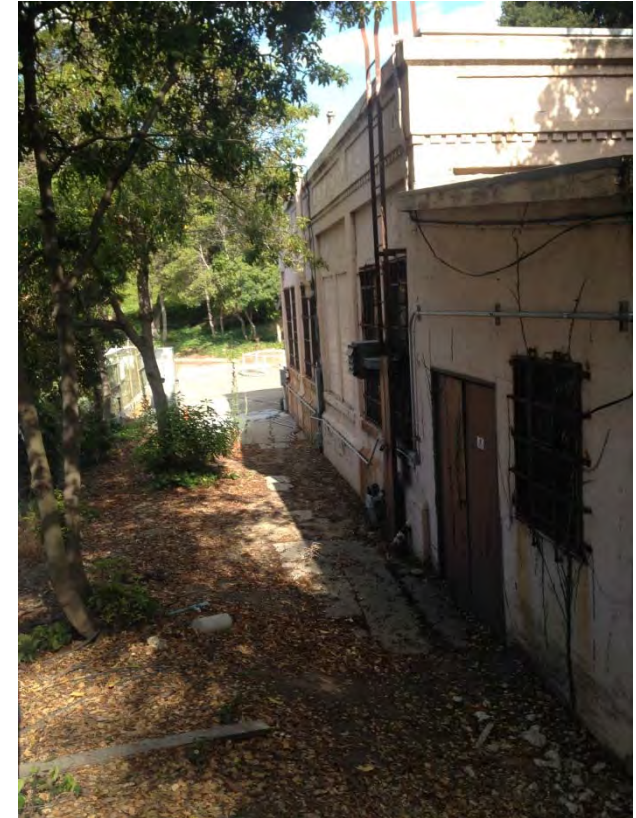
# Main Dam



DRAFT



# Former Materials Lab





# Access Road along Main (south) Dam





# Access Road Looking SW





# From top of Main Dam looking south at E. 29th Gate





# Outlet Tower Catwalk looking north toward Oakland Hills

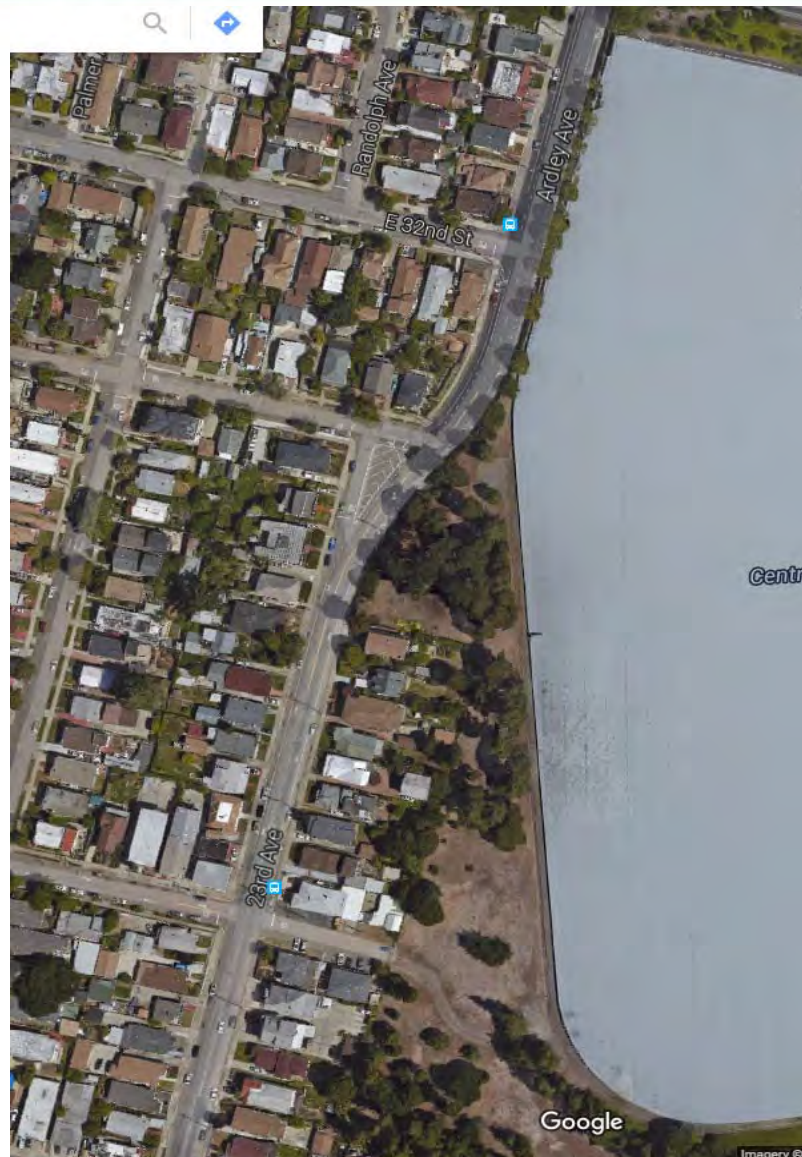


# Looking north from the southwest side of Central





# West side of site



DRAFT



# Fence line and Neighbors west side





# Neighbors – West Side



DRAFT



# Neighbors – West Side





# Auxiliary Dam, North side



# Auxiliary Dam and I-580, looking northwest





# Redwood Day School





# Redwood Day School





# Southeast side of site, Park



# Central Reservoir Park– City of Oakland





# Thank You



- **Questions?**
- **Please submit additional questions by 7/22**
- **Addendum will be posted to website on 8/1**

DRAFT