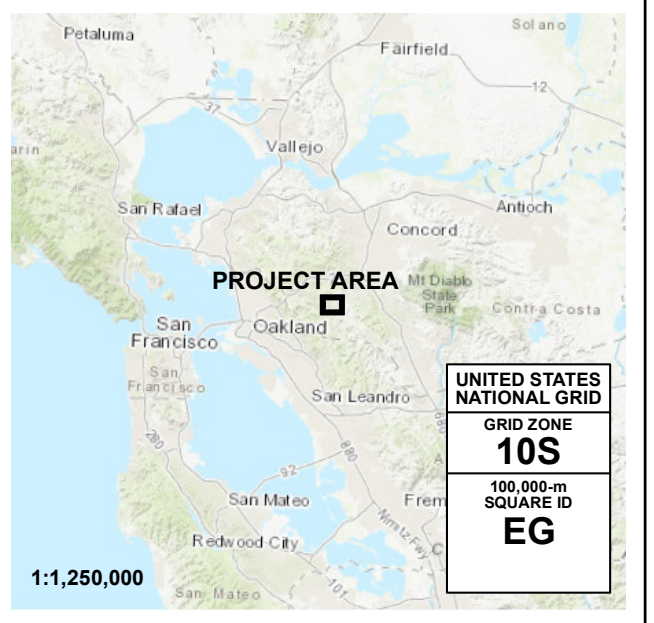


EBMUD INUNDATION MAP FOR HYPOTHETICAL FAILURE OF
FAY HILL RESERVOIR (MAIN DAM BREACH)
 CONTRA COSTA COUNTY, CA

SCENARIO: SUNNY DAY	PREP. DATE: JUN 2021	SHEET NO.: INDEX	DWR DAM NO.: N/A	NATIONAL DAM ID NO.: N/A
-------------------------------	--------------------------------	----------------------------	----------------------------	------------------------------------



LEGEND

ARRIVAL TIME (MIN) FOR 1 FOOT OF WATER	MAXIMUM DEPTH (FEET)
STREAM CENTERLINE	1 - 2
UNDERGROUND CULVERT/STORM DRAIN	2 - 3
DAM	3 - 4
MAP BOOK GRID	4 - 6
CITY BOUNDARY	6 - 8
	> 8

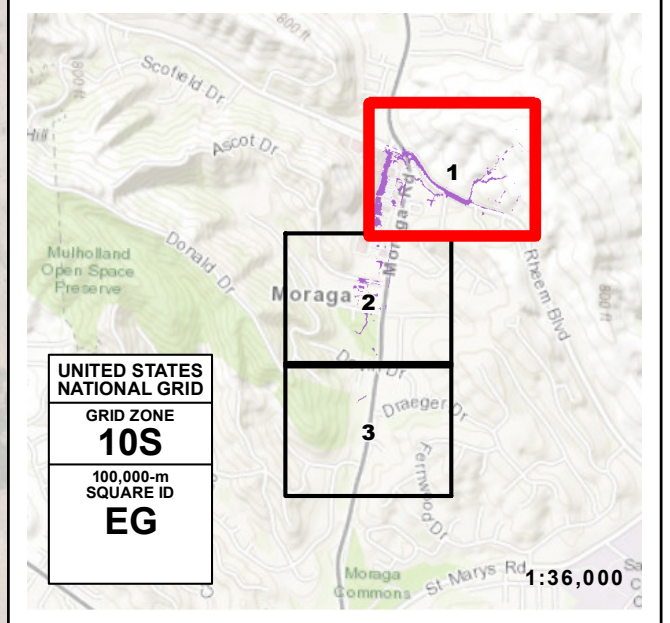
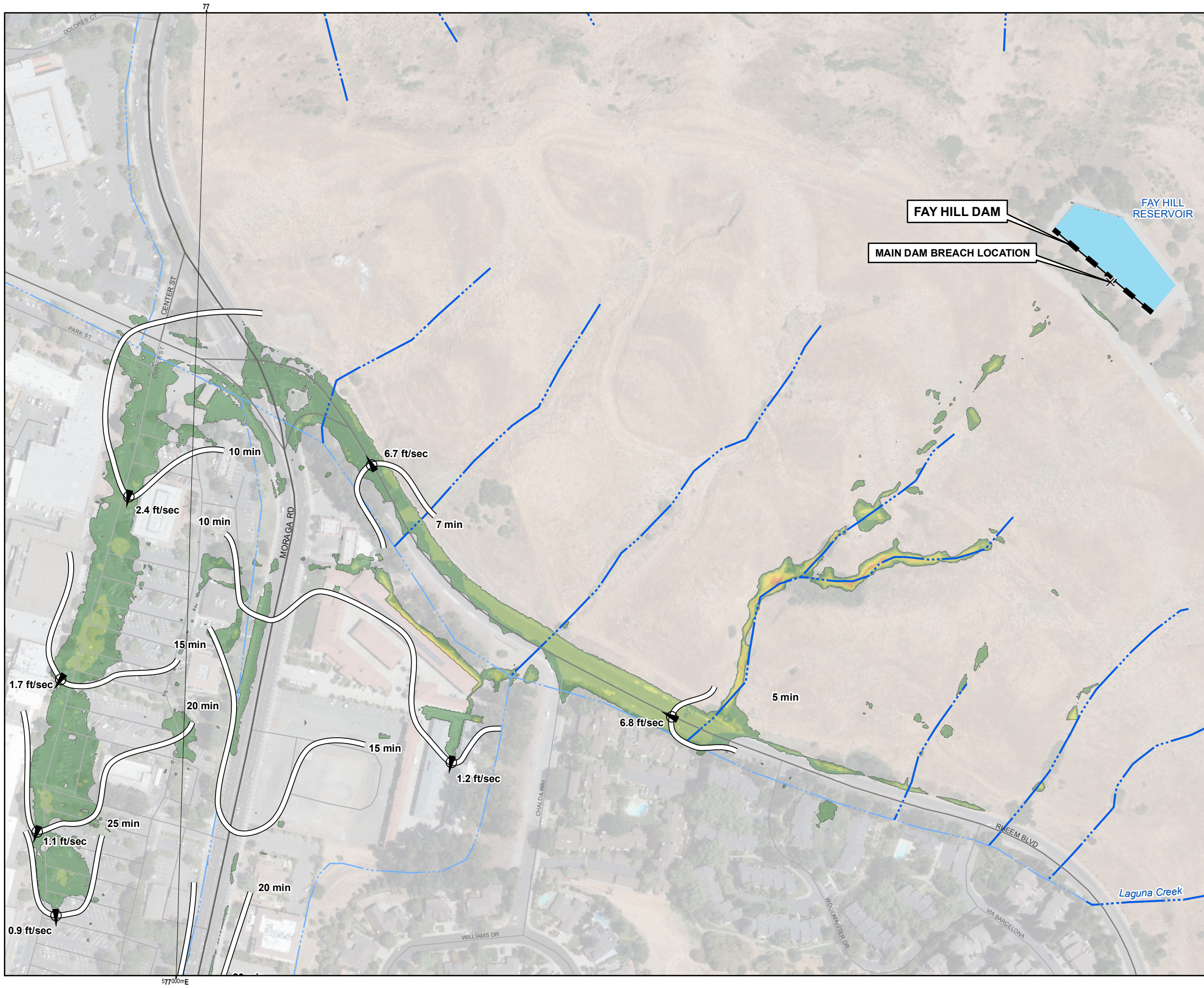
NOTES:

- The information shown on the inundation map is approximate and should only be used as a guideline for emergency response and preparation purposes. It does not represent the integrity or safety of Fay Hill Dam.
- The dam breach analysis was performed March 1, 2021 using the program HEC-RAS, Version 5.0.7. Elevations in the study reference NAVD88.
- Maximum velocity depends on factors such as ground slope and roughness, and therefore varies.
- Security-sensitive infrastructure may not be shown on this map.

MAP PROJECTION:
 California Teale Albers (feet), NAD83

SCALE IN FEET (1 INCH=800 FEET)

REFERENCE:
 GRID OVERLAY, United States National Grid (meters), NAD83
 GRATICULE, Geographic Coordinate System, NAD83 (DDM)



FLOOD WAVE

MAXIMUM DEPTH (FEET)

1 - 2
2 - 3
3 - 4
4 - 6
6 - 8
> 8

ARRIVAL TIME (MIN) FOR 1 FT OF WATER

MAXIMUM VELOCITY AND DIRECTION AT SELECTED LOCATION

STREAM CENTERLINE

UNDERGROUND CULVERT/STORM DRAIN

CITY LIMITS

NOTES:

1. The information shown on the inundation map is approximate and should only be used as a guideline for emergency response and preparation purposes. It does not represent the integrity or safety of Fay Hill Dam.
2. The dam breach analysis was performed March 1, 2021 using the program HEC-RAS, Version 5.0.7. Elevations in the study reference NAVD88.
3. Maximum velocity depends on factors such as ground slope and roughness, and therefore varies.
4. Security-sensitive infrastructure may not be shown on this map.

MAP PROJECTION:
 California Teale Albers (feet), NAD83

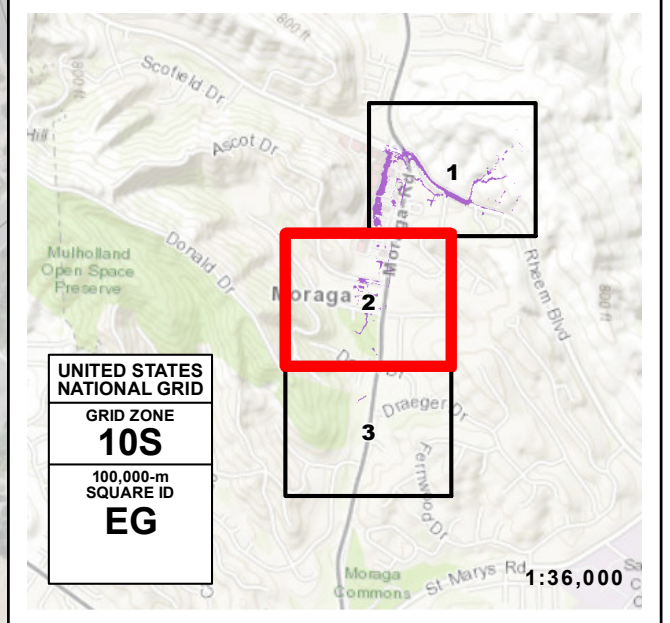
SCALE IN FEET (1 INCH=200 FEET)

REFERENCE:
 GRID OVERLAY, United States National Grid (meters), NAD83
 GRATICULE, Geographic Coordinate System, NAD83 (DDM)



EBMUD INUNDATION MAP FOR HYPOTHETICAL FAILURE OF
FAY HILL RESERVOIR (MAIN DAM BREACH)
 CONTRA COSTA COUNTY, CA

SCENARIO: SUNNY DAY	PREP. DATE: JUN 2021	SHEET NO.: 2 OF 3	DWR DAM NO.: N/A	NATIONAL DAM ID NO.: N/A
------------------------	-------------------------	----------------------	---------------------	-----------------------------



FLOOD WAVE MAXIMUM DEPTH (FEET)

1 - 2
2 - 3
3 - 4
4 - 6
6 - 8
> 8

F FIRE STATIONS

ARRIVAL TIME (MIN) FOR 1 FT OF WATER

MAXIMUM VELOCITY AND DIRECTION AT SELECTED LOCATION

STREAM CENTERLINE

UNDERGROUND CULVERT/STORM DRAIN

CITY LIMITS

NOTES:

- The information shown on the inundation map is approximate and should only be used as a guideline for emergency response and preparation purposes. It does not represent the integrity or safety of Fay Hill Dam.
- The dam breach analysis was performed March 1, 2021 using the program HEC-RAS, Version 5.0.7. Elevations in the study reference NAVD88.
- Maximum velocity depends on factors such as ground slope and roughness, and therefore varies.
- Security-sensitive infrastructure may not be shown on this map.

MAP PROJECTION:
 California Teale Albers (feet), NAD83

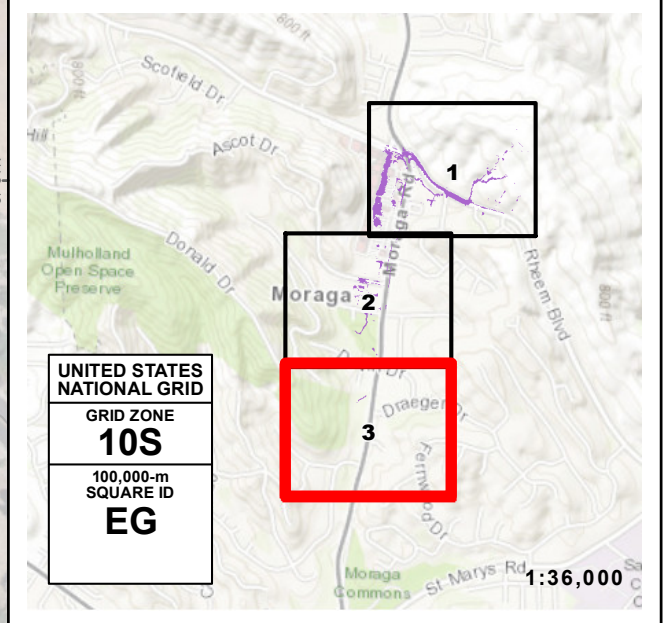
SCALE IN FEET (1 INCH=200 FEET)

REFERENCE:
 GRID OVERLAY, United States National Grid (meters), NAD83
 GRATICULE, Geographic Coordinate System, NAD83 (DDM)



EBMUD INUNDATION MAP FOR HYPOTHETICAL FAILURE OF
FAY HILL RESERVOIR (MAIN DAM BREACH)
 CONTRA COSTA COUNTY, CA

SCENARIO: SUNNY DAY	PREP. DATE: JUN 2021	SHEET NO.: 3 OF 3	DWR DAM NO.: N/A	NATIONAL DAM ID NO.: N/A
-------------------------------	--------------------------------	-----------------------------	----------------------------	------------------------------------



FLOOD WAVE

MAXIMUM DEPTH (FEET)

- 1 - 2
- 2 - 3
- 3 - 4
- 4 - 6
- 6 - 8
- > 8

ARRIVAL TIME (MIN) FOR 1 FT OF WATER

MAXIMUM VELOCITY AND DIRECTION AT SELECTED LOCATION

STREAM CENTERLINE

UNDERGROUND CULVERT/STORM DRAIN

CITY LIMITS

NOTES:

- The information shown on the inundation map is approximate and should only be used as a guideline for emergency response and preparation purposes. It does not represent the integrity or safety of Fay Hill Dam.
- The dam breach analysis was performed March 1, 2021 using the program HEC-RAS, Version 5.0.7. Elevations in the study reference NAVD88.
- Maximum velocity depends on factors such as ground slope and roughness, and therefore varies.
- Security-sensitive infrastructure may not be shown on this map.

MAP PROJECTION:
 California Teale Albers (feet), NAD83

SCALE IN FEET (1 INCH=200 FEET)

0 100 200 300

REFERENCE:
 GRID OVERLAY, United States National Grid (meters), NAD83
 GRATICULE, Geographic Coordinate System, NAD83 (DDM)