

# **Water Supply Update**

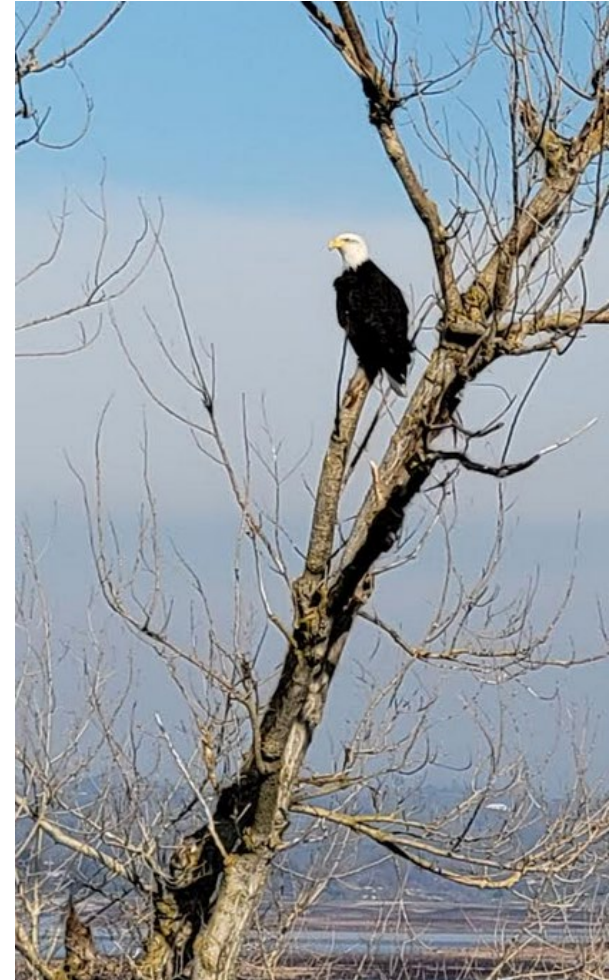
Board of Directors

February 8, 2022

# Water Supply Briefing



- Supplemental Water Supply
- Current Water Supply
- California Water Supply
- Regional Outlooks
- Water Supply Projections



*Bald Eagle near Camanche Reservoir*

# Supplemental Water Supply

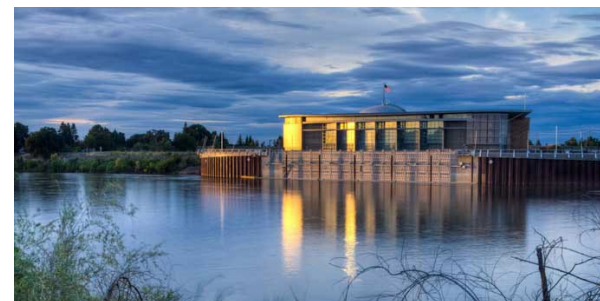


Freeport operations suspended on Dec. 28, 2021

- At that time local storage was limited due to storm runoff
- 20,950 AF diverted during the fall out of 35,250 AF allocated by US Bureau of Reclamation

January and February to date (and forecasted) have been extremely dry

- In response, Freeport operations re-initiated on February 8, 2022



*Freeport Intake Facility*

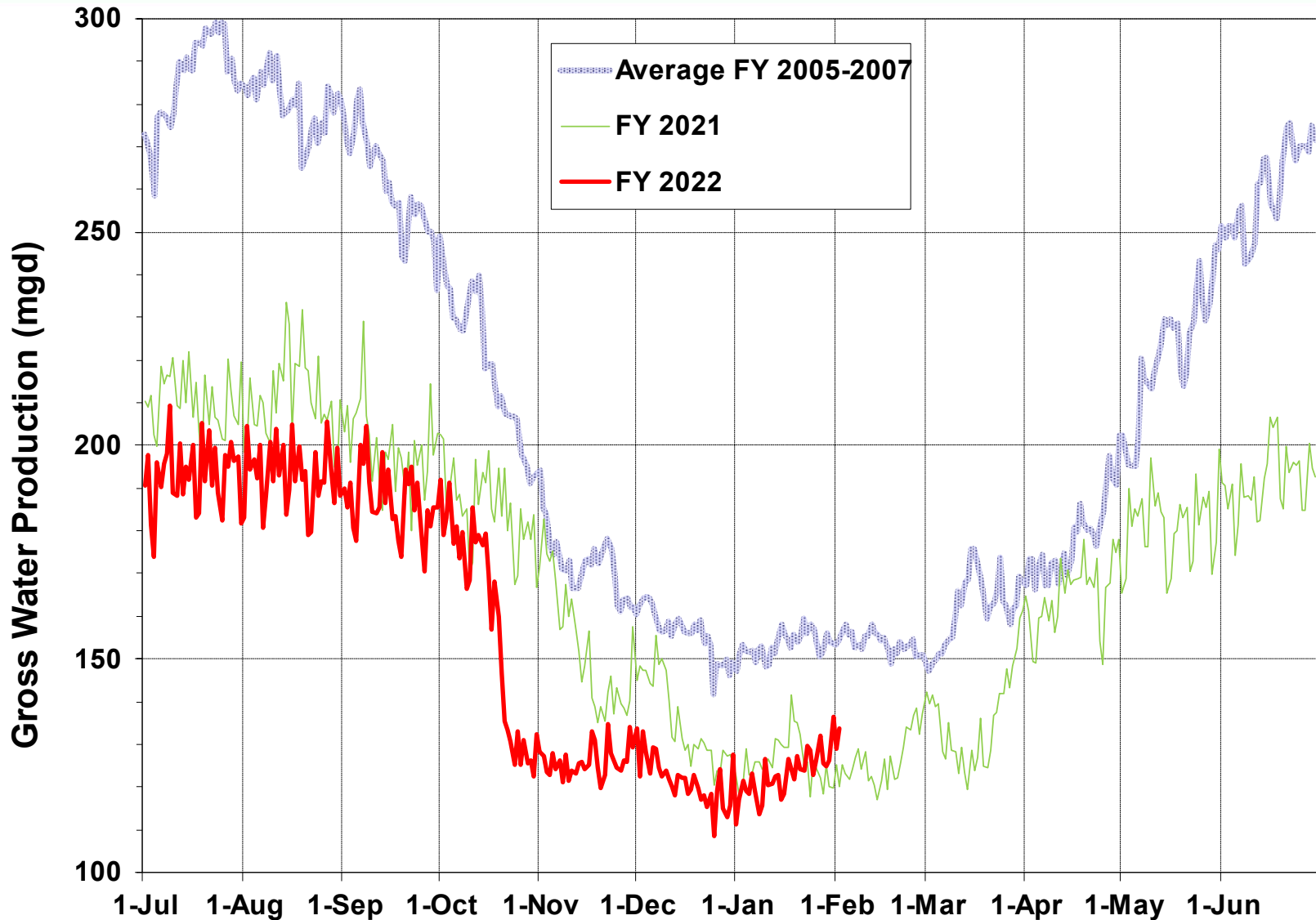
Reclamation authorized District to divert remaining 14,300 AF of 2021 Contract Year supplies through March 2022

- Contract Year 2022 CVP supply pending

Supplemental water imports will be suspended if hydrology improves

# Current Water Supply

## Gross Water Production

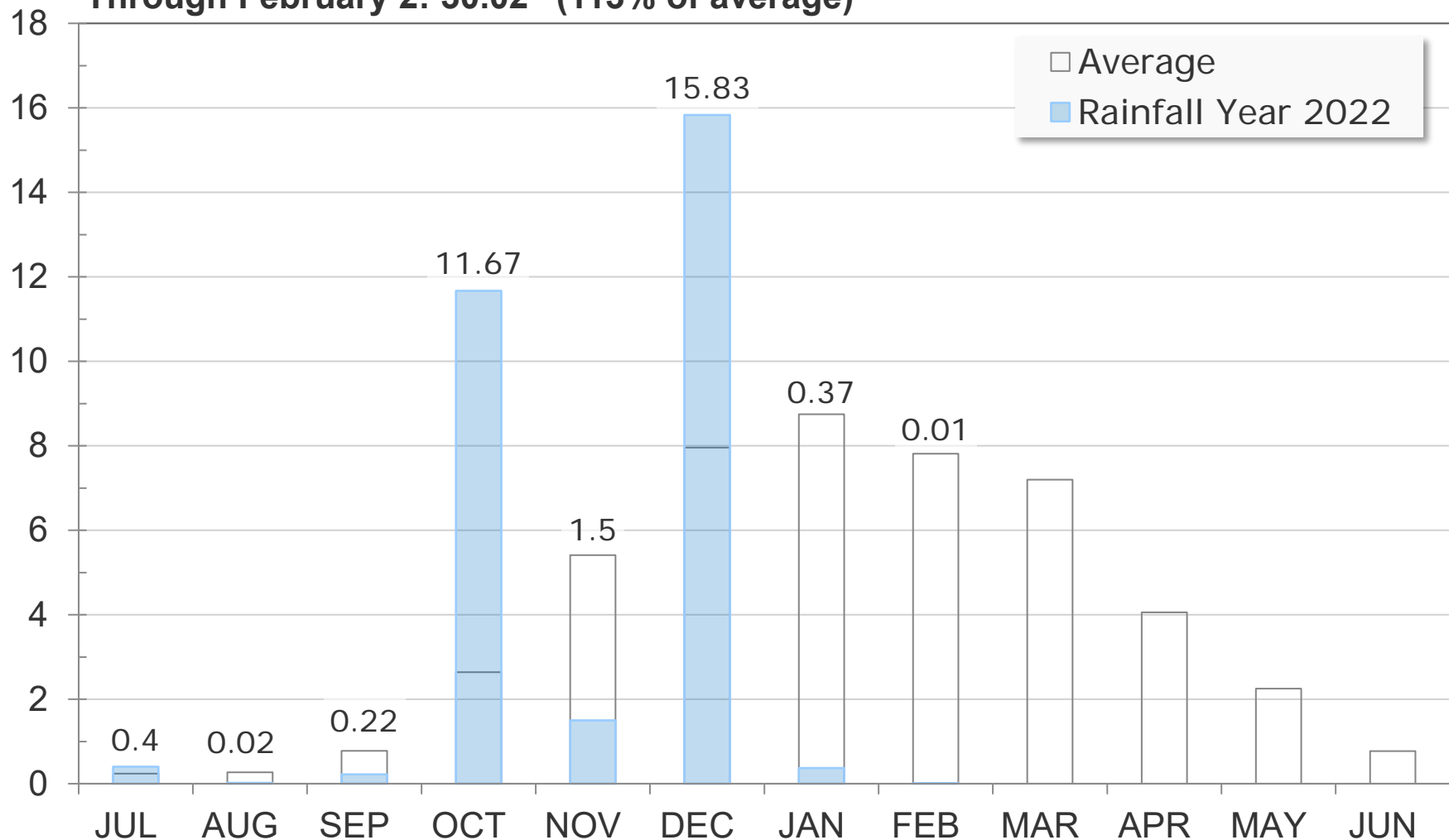


# Current Water Supply

## Mokelumne Precipitation



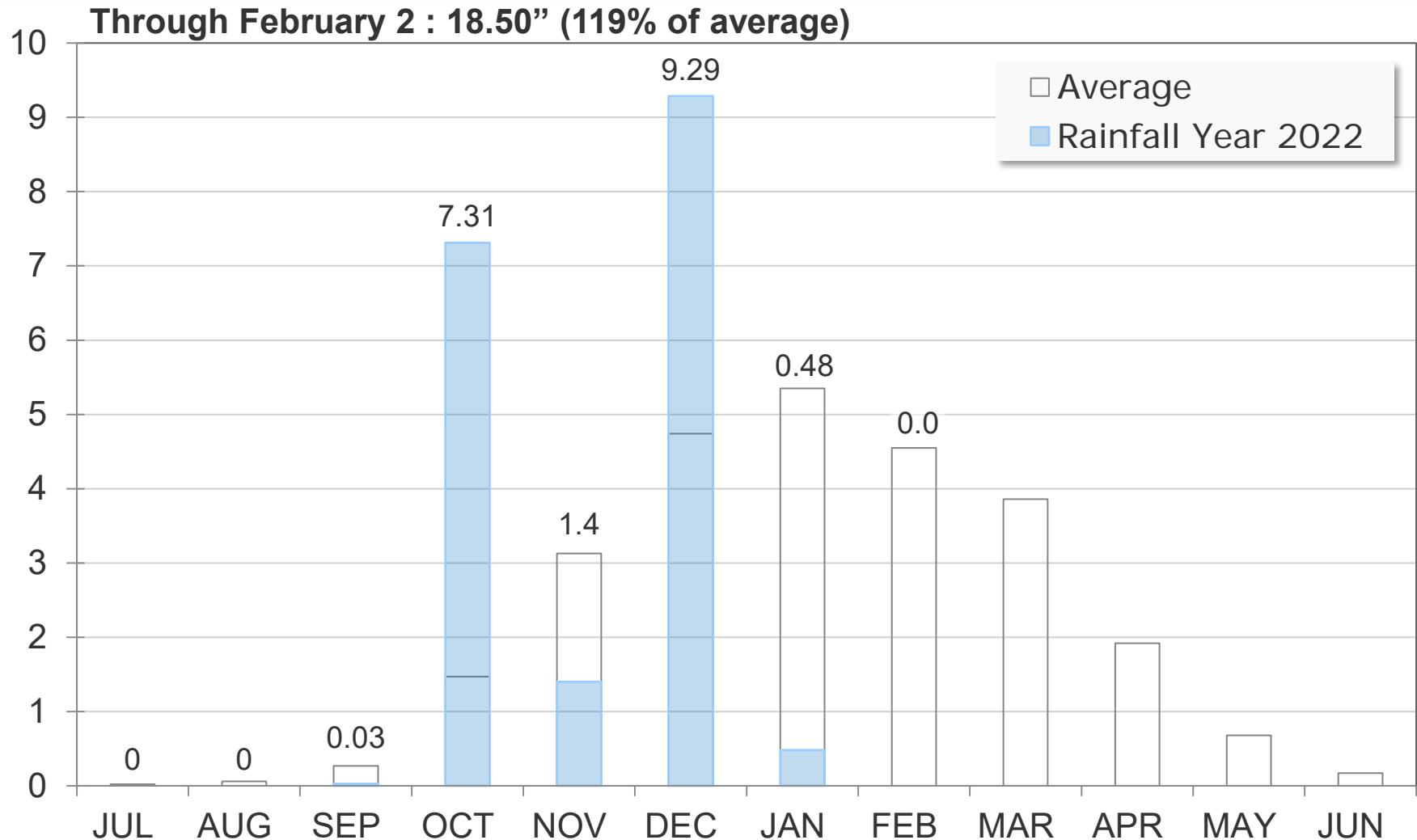
Through February 2: 30.02" (113% of average)





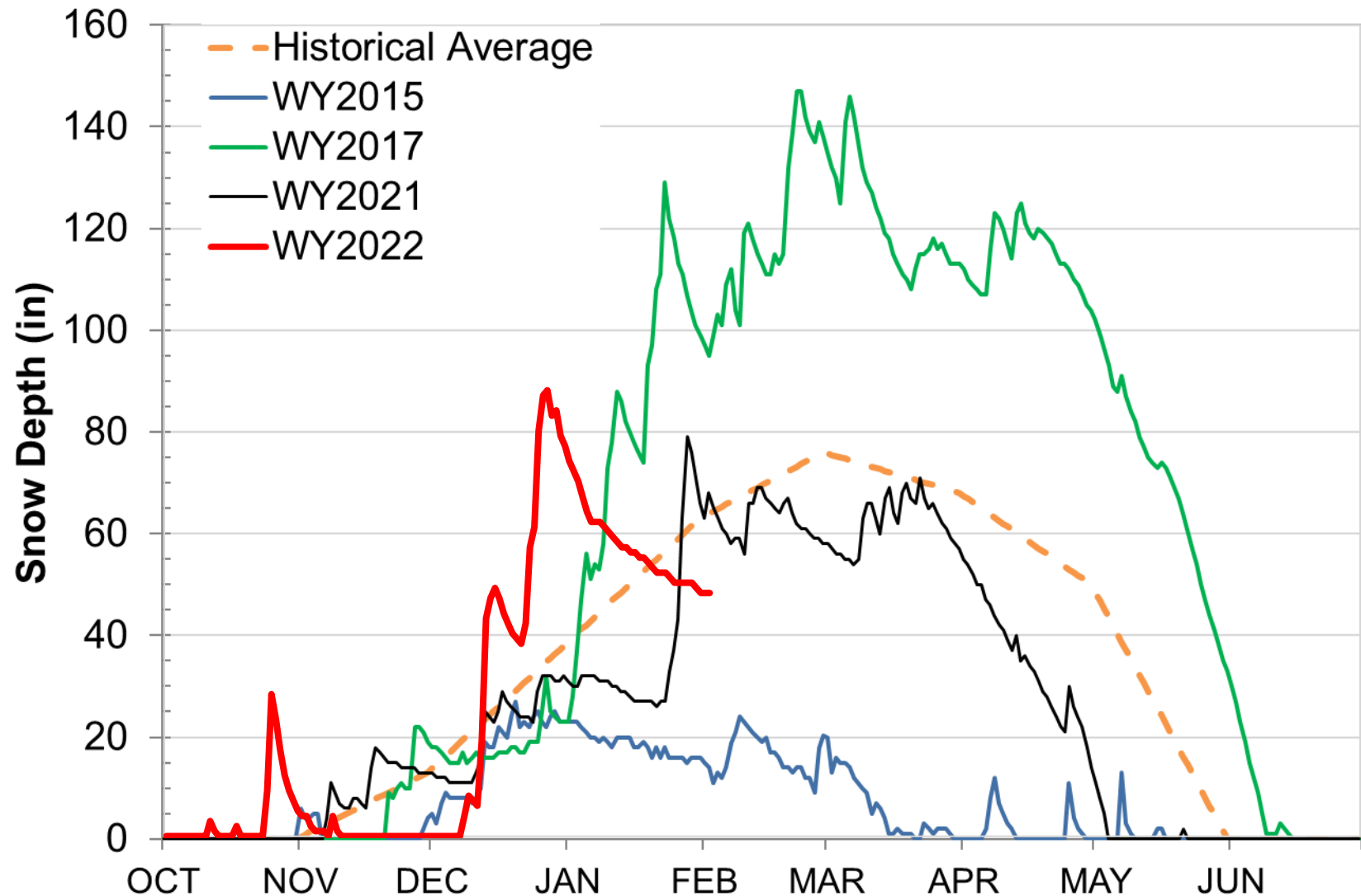
# Current Water Supply

## East Bay Precipitation



# Current Water Supply

## Caples Lake Snow Depth



# Current Water Supply

## Reservoir Storage



*Pardee Recreation Area and Jackson Creek Spillway*



*Camanche Reservoir*



*Briones Reservoir*

As of Feb. 2, 2022	Current Storage	Percent of Average	Percent of Capacity
Pardee	173,400 AF	97%	85%
Camanche	219,910 AF	84%	53%
East Bay	130,130 AF	103%	87%
Total System	523,440 AF	92%	68%



# California Water Supply

## Automated Sensor Snow Water Equivalents



% Normal for this Date



Data for: 3-Feb-2022

Statewide Average: 89%

# Regional Outlooks

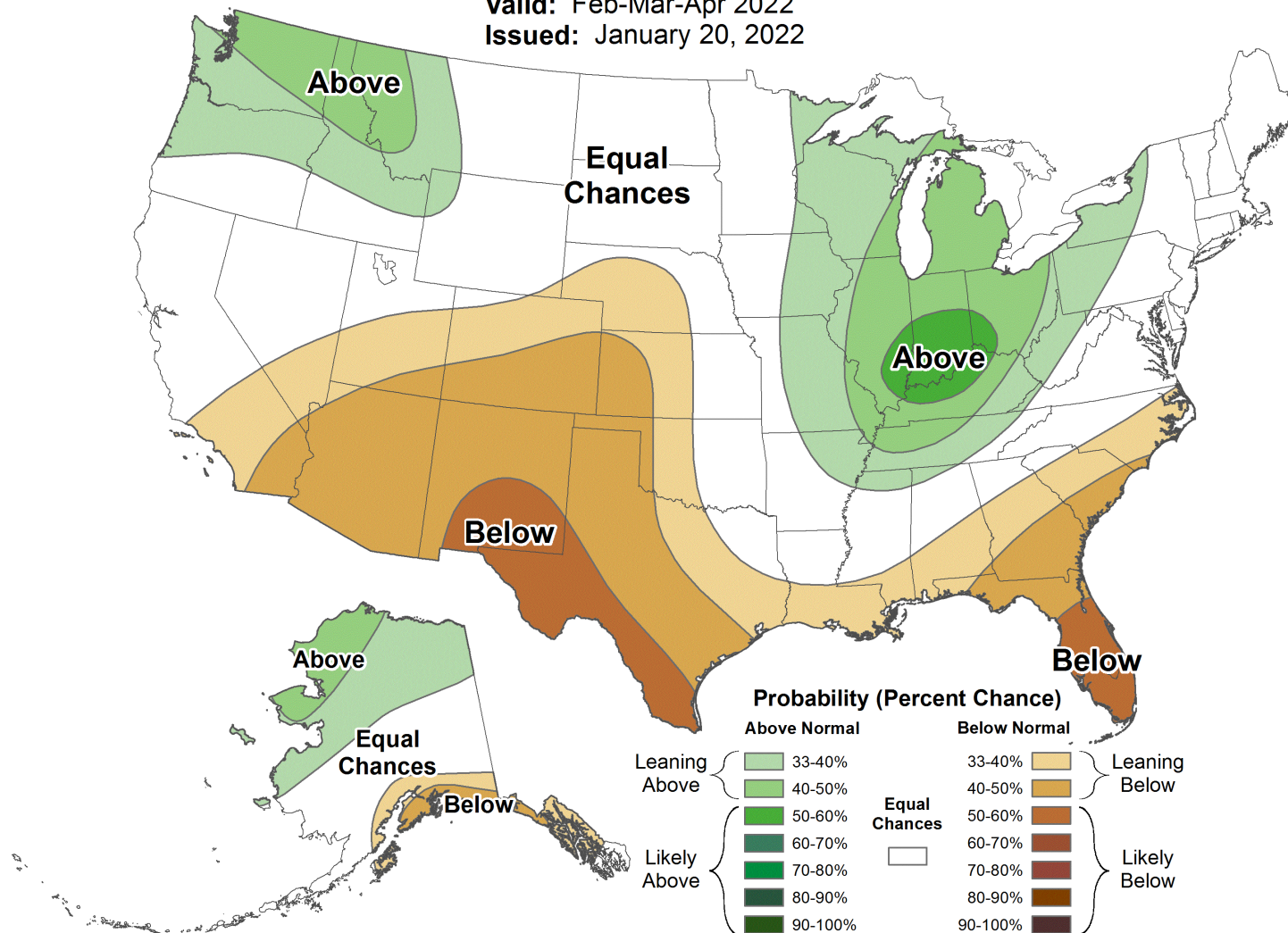
## Precipitation Outlook for Feb '22 through Apr '22



### Seasonal Precipitation Outlook

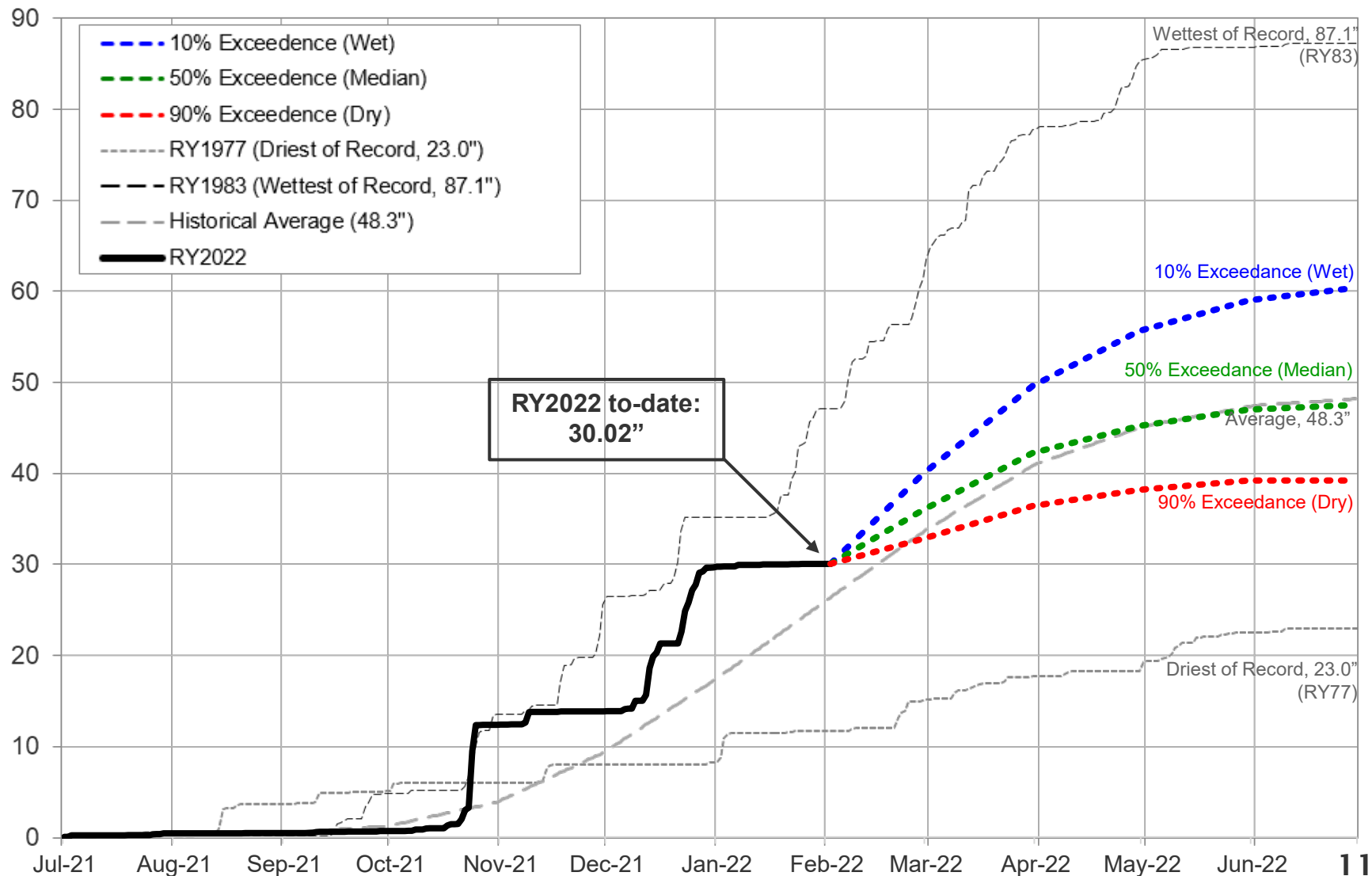


Valid: Feb-Mar-Apr 2022  
Issued: January 20, 2022



# Water Supply Projections

## Mokelumne Precipitation Rainfall Year 2022

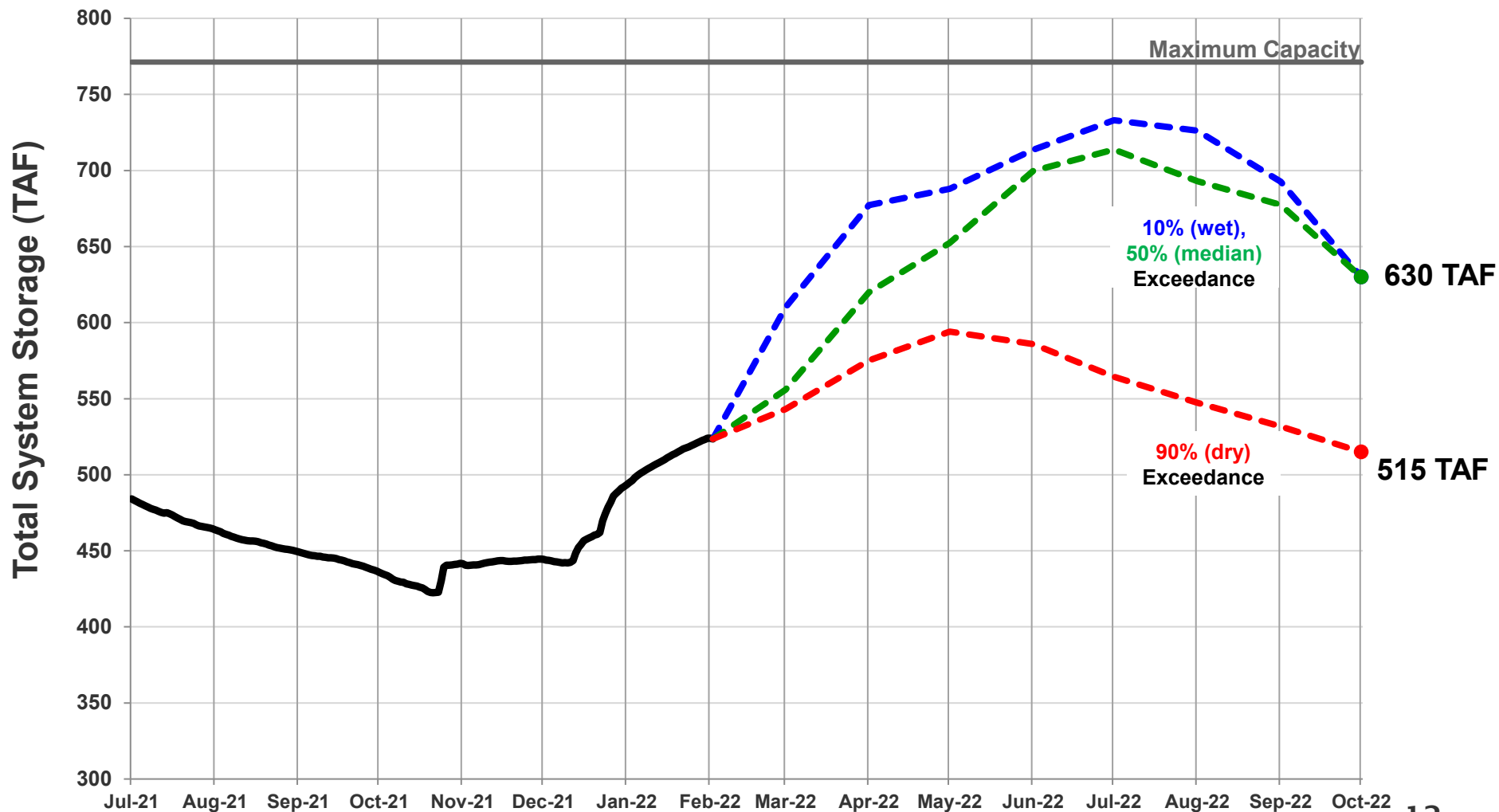


# Water Supply Projections

## Projected 2022 EBMUD Total System Storage



Total System Storage WY2022





# Questions ?



*Camanche Reservoir*



# WATER SUPPLY ENGINEERING DAILY REPORT

Wednesday, February 2, 2022

## RESERVOIR STORAGE AND ELEVATION

	<u>WATER SURFACE</u>		<u>STORAGE</u>		<u>MAXIMUM CAPACITY</u>			
	Elevation	+Gain		+Gain	Elevation	Storage	Release	Spill
<u>MOKELUMNE</u>	<u>Feet</u>	<u>-Loss</u>	<u>Ac-Ft</u>	<u>-Loss</u>	<u>Feet</u>	<u>Ac-Ft</u>	<u>Cfs</u>	<u>Cfs</u>
Pardee	553.3	-0.56	173400	-1120	567.65	203795	650	0
Camanche	205.12	0.13	219910	700	235.5	417120	226	0
<u>EAST BAY</u>								
Briones	563.83	0	50590	0	576.14	58960	0	0
Chabot	222.3	-0.01	8740	0	227.25	10350	0	0
Lafayette	436.51	0	2780	0	449.16	4250	0	0
San Pablo	309.44	0.03	34460	20	313.68	37915	0	0
Upper San Leandro	452.69	-0.17	<u>33560</u>	<u>-120</u>	459.98	<u>38905</u>	0	0
<u>Total East Bay Res.</u>			<u>130130</u>	<u>-100</u>		<u>150380</u>		
TOTAL SYSTEM STORAGE			523440	-520		771295		

## DISTRIBUTION SYSTEM

## DISTRIBUTION RESERVOIRS

	Storage MG	Operating Capacity
Today	341	720
Total Previous Day	<u>345</u>	
Total Change	-4	

## WATER PRODUCTION AND DEMAND

<u>WATER PRODUCTION AND DEMAND</u>	Million <u>Gallons</u>	Capacity <u>MGD</u>
Lafayette WTP	0	25
Orinda WTP	60	190
San Pablo WTP	0	30
Sobrante WTP	0	50
Upper San Leandro WTP	40.1	45
Walnut Creek WTP	30.7	90

## TOTAL SURFACE PRODUCTION

<u>TOTAL SURFACE PRODUCTION</u>	130.8	430
Miscellaneous(Estimated)	0.4	
<u>TOTAL WATER PRODUCTION</u>	<u>131.2</u>	
Change in Distribution System	-4	
Wash Water from Distribution Sys.	1.3	

## SYSTEM DEMAND

<u>SYSTEM DEMAND</u>	133.6
East-of-Hills Demand	32.3
West-of-Hills Demand	101.3

## MOKELUMNE SYSTEM

## AQUEDUCT DELIVERIES

	<u>MG</u>	<u>Flow Conditions</u>
Line 1	13.2	THROTTLE
Line 2	13.3	THROTTLE
Line 3	<u>65.7</u>	<u>THROTTLE</u>
TOTAL	92.2	143 Cfs

## FSCC to MOK AQUEDUCTS (Measured at Brandt), MG

Mok 1	0
Mok 2	<u>0</u>
	0 MG

## RIVER FLOWS AND RELEASES

<u>RIVER FLOWS AND RELEASES</u>	<u>Cfs</u>
Mokelumne River Natural Flow	458
Pardee Reservoir Inflow	232
Pardee Release to Camanche Res.	650
Pardee Release to JVID	0
Camanche Release to Mokel. River	226

PG&E CO. STORAGE (Acre-feet)

	<u>Storage</u>	<u>Change</u>	Maximum <u>Capacity</u>
Old Reservoirs	9177	0	26560
Salt Springs Res.	44211	308	141857
Lower Bear Res.	<u>17839</u>	<u>140</u>	<u>52025</u>
Total	71227	448	220442

**RAW WATER TRANSMISSION** Ac-ft

	<u>INPUT</u>	<u>DRAFT</u>
Briones Res.	0	0
San Pablo Res.	5	0
U. San Leandro Res.	0	129
<b>TOTAL</b>	<b>5</b>	<b>129</b>

## REMARKS

WID Canal Diversion = 0 cfs  
Mokelumne River below WID = 350 cfs

### PRECIPITATION (Inches)

## THIS YEAR

## AVERAGE YEAR

<u>STATION</u>	<u>Today</u>	<u>This Month</u>	<u>Season to-Date</u>	<u>Season to-Date</u>	<u>Season Total</u>
USL WTP	0	0	20.53	14.82	25.33
Orinda WTP	0	0	26.84	18.32	32.06
Lafayette Reservoir	0	0	16.47	16.34	28.18
Walnut Creek WTP	0	0	17.45	13.42	23.02
Camp Pardee	0	0	14.97	11.67	21.56
Salt Springs P.H.	0	0.05	26.37	24.96	45.51

## CAPLES LAKE (7,830 FT) DATA

	Today	Average
Snow Depth	48 Inches	64 Inches
Water Content	18.0 Inches	21.0 Inches