



# NOTICE OF EXEMPTION

**TO:**  
Alameda County Clerk-Recorder  
1106 Madison Street  
Oakland, CA 94607

**FROM:**  
Office of the Secretary  
East Bay Municipal Utility District  
375 Eleventh Street, MS 806  
Oakland, CA 94607-4240  
510-287-7040  
 Lead Agency is the Project Applicant  
 Lead Agency is Public Agency Approving Project  
 Lead Agency is Carrying Out Project

## PROJECT INFORMATION

1. **TITLE:** Summit Pressure Zone 24-Inch Transmission Pipeline Project, Clark Kerr Campus

2. **LOCATION:** (City, County, and specific location)

The Project is located in the cities of Berkeley and Oakland within Alameda County. The total length of new pipeline to be installed is approximately 4,800 ft. The alignment starts at the intersection of Claremont Avenue and Tanglewood Road, north on Tanglewood Road, west on Garber Street onto Claremont Boulevard, north on Claremont Boulevard, west on Forest Avenue, north on Piedmont Avenue, east on Dwight Way, and ending at the intersection of Prospect Street.

3. **DESCRIPTION:**

The existing transmission pipeline that traverses Clark Kerr Campus is located within the Hayward Fault Zone making it susceptible to frequent breaks and leaks. The existing transmission pipeline from the water meter serving Clark Kerr Campus to Stonewall Road will be filled with cellular concrete then abandoned and approximately 4,800 ft. of 24-inch pipeline will be relocated onto city streets of Berkeley and Oakland. In addition, to facilitate the pipeline abandonment, two new tee connections and an isolation valve will be installed. This NOE supersedes the NOE filed in November 2017

## EXEMPTION FINDING (Check one)

This project is exempt from CEQA because:

1.  Activity is not a project
2.  Activity is Ministerial (Sec.21080(b)(1); Guideline 15268)
3.  Activity is a Declared Emergency (Sec.21080(b)(3); Guideline 15269(a))
4.  Activity is an Emergency Project (Sec.21080(b)(4); Guideline 15269(b)(c))
5.  Activity is Categoricaly Exempt Under Guideline 15302
6.  Activity is Statutorily Exempt Under Guideline 15282 (k)
7.  Reasons why project is exempt: Under Section 15302 replacement or reconstruction of existing utility systems and/or facilities involving negligible or no expansion of capacity. Under Section 15282 (k) installation of new pipeline does not exceed one mile in length.

POSTED ON EBMUD.COM BY  
SECRETARY OF THE DISTRICT  
RISCHA S. COLE

FROM 1/15/21 TO 2/22/21

INITIALS RC

## APPROVAL BY INITIATING UNIT: 523 Major Facilities Planning, Water Distribution Planning Division

January 8, 2021	Vanessa D. Chi	Timothy R. McGowan
1. DATE PREPARED	2. PREPARED BY (initial)	3. REVIEWED BY (Unit Supv. initial)
David J. Rehnstrom	<i>Vanessa D. Chi</i>	
4. RECOMMENDED BY (Division/Section Manager)		
Timothy McGowan	701	Senior Civil Engineer
5. CONTACT PERSON	MAIL SLOT #	TITLE
		PHONE
		510-287-1981

## NOTICE OF EXEMPTION APPROVED FOR FILING WITH THE COUNTY CLERK

1/15/2021  
DATE  
DEPARTMENT DIRECTOR  
1/15/21  
DATE FORWARDED TO COUNTY CLERK  
SECRETARY OF THE DISTRICT

## **EAST BAY MUNICIPAL UTILITY DISTRICT**

### **SUMMIT PRESSURE ZONE 24-INCH TRANSMISSION PIPELINE PROJECT, CLARK KERR CAMPUS**

#### **Project Summary**

Clark Kerr Campus (Campus) is a student housing complex for the University of California located at 2601 Warring Street in the City of Berkeley within Alameda County. The existing transmission pipeline that traverses the Campus is in the Hayward Fault Zone and experiences numerous leaks and breaks. The Summit Pressure Zone 24-inch Transmission Pipeline Project (Project) includes replacing the segment of water transmission pipeline that traverses the Campus with approximately 4,800 feet of 24-inch steel pipeline, relocated into city streets of Berkeley and Oakland. Upon completed of the relocation work, the existing transmission pipeline will be abandoned from the existing water meter serving the Campus to Stonewall Road and filled with cellular concrete. In addition, to facilitate the abandonment of the existing transmission pipeline, two new tee connections and an isolation valve will be installed.

#### **Purpose**

The primary purpose of the Project is to mitigate future pipeline breaks and leaks by relocating and abandoning pipelines that are in the Hayward Fault Zone. Approximately 1,110 feet of existing transmission pipeline located in right-of-way 1685 will be filled with cellular concrete and abandoned after the new 24-inch transmission pipeline is installed.

This Notice of Exemption (NOE) supersedes the NOE filed in November 2017 to reflect the changes in Project scope.

#### **Site Characteristics**

The Project area spans through the city street of Berkeley and Oakland. The alignment of the new pipeline starts at the intersection of Claremont Avenue and Tanglewood Road, north on Tanglewood Road, west on Garber Street onto Claremont Boulevard, north on Claremont Boulevard, west on Forest Avenue, north on Piedmont Avenue, east on Dwight Way, and ending at the intersection of Prospect Street. Figure 1 presents the location map and alignment of the new 24-inch transmission pipeline. One tee connection will be installed at the intersection of Claremont Avenue and Stonewall Road in the City of Oakland and a second tee connection will be installed at the intersection of Dwight Way and Prospect Street in the City of Berkeley. The isolation valve will installed be on Dwight Way, in between the east of Prospect Street and west of Dwight Regulator, located opposite of 2985 Dwight Way in the City of Berkeley.

The city streets are two-lane residential roadways with moderate traffic. During the construction process, there will be block-by-block street closures along Piedmont Avenue and Garber Street. However, local residents will still have access to the roadways. The remaining streets will

maintain one lane open and flaggers will be placed when there is alternating one-way traffic. No overnight construction activities are expected.

### **Permits**

From the City of Berkeley and Oakland, encroachment permits will be required to work within city streets and approval is needed to use city sewer lines or storm drains for dewatering activities. From the California Regional Water Quality Control Board, a National Pollution Discharge Elimination System Construction General Permit is required. All necessary permits from regulatory agencies will be obtained, as necessary, to complete the Project.

### **Schedule and Work Hours**

Construction is expected to start in fall 2021 and will take approximately ten to twelve months to complete. Construction activities will be limited to the weekday during daytime hours, Monday through Friday between the hours of 7 a.m. to 7 p.m., to the extent feasible. If work is required on the weekends, construction activities will take place from 9 a.m. to 8 p.m. No overnight construction activities are expected. EBMUD is working with the respective cities to determine appropriate work hours and to finalize the traffic control plan.

### **Public Considerations**

For the Project duration, there will be several pipeline shutdowns and outages at nearby distribution facilities; however, no water service disruptions are expected. EBMUD will limit all shutdowns to the months of November through March when water demands are lower.

For portions of the Project duration, partial and/or full street closures may be required. A traffic control plan is being finalized and will be submitted to the cities of Oakland and Berkeley. Standard construction environmental and safety practices and best management practices applicable to all EBMUD construction projects have been incorporated into the Project. These standard practices minimize impacts to the public resulting from EBMUD construction projects.

DJR:TRM:VDC  
sb20\_255b

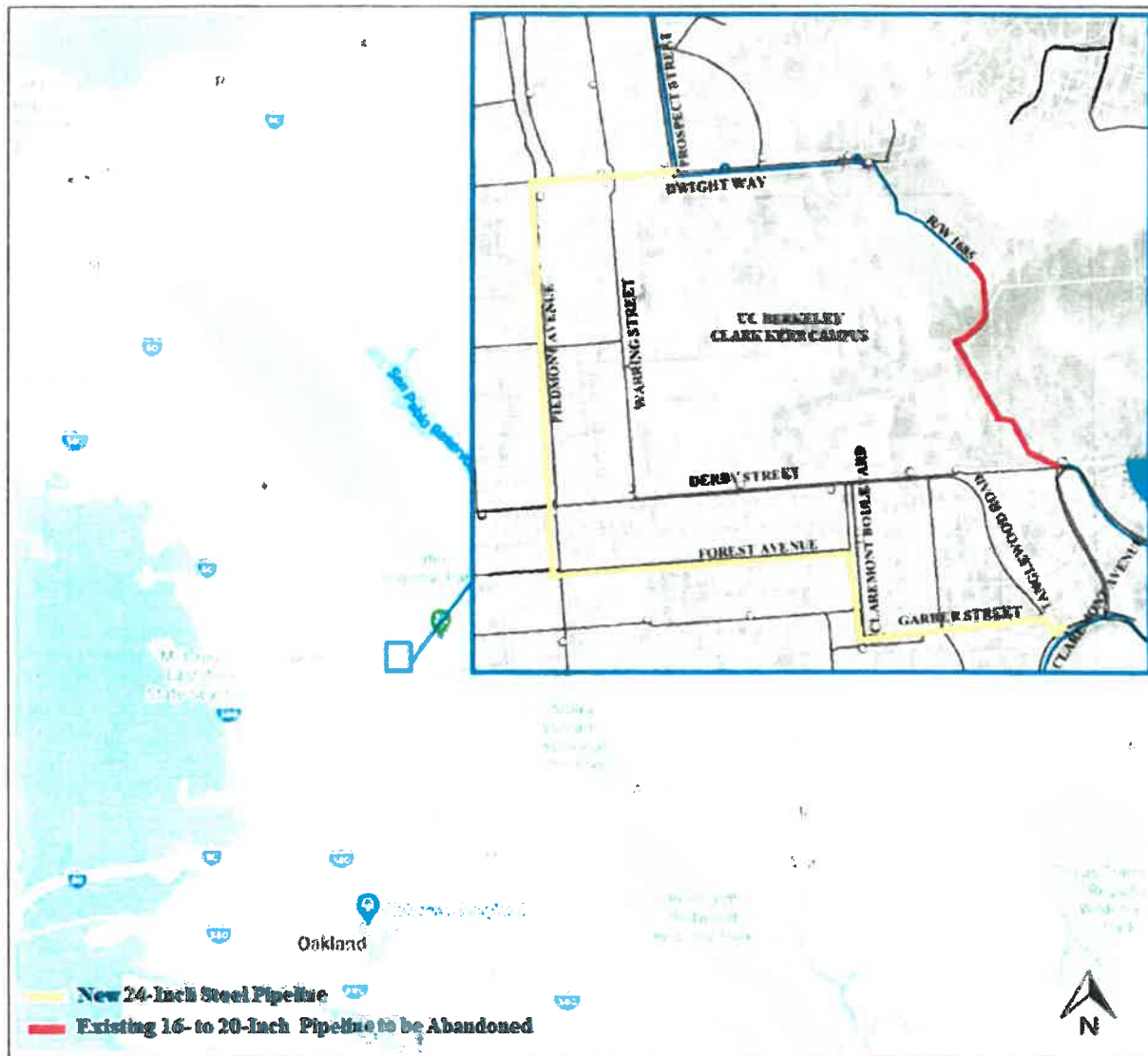


Figure 1. Project Location Map and New Pipeline Alignment  
(Not to Scale)

# Document Root (Read-Only)

## **2021010165 - NOE - Summit Pressure Zone 24-Inch Transmission Pipeline Project, Clark Kerr Campus**

East Bay Municipal Utility District

Created - 1/13/2021 | Submitted - 1/15/2021 | Posted - 1/15/2021 | Received - 1/15/2021 | Published - 1/15/2021

Robyn Johnson

### **Document Details**

#### **Public Agency**

East Bay Municipal Utility District

#### **Document Type**

Notice of Exemption

#### **Document Status**

Published

#### **Title**

Summit Pressure Zone 24-Inch Transmission Pipeline Project, Clark Kerr Campus

### **Document Description**

The existing transmission pipeline that traverses Clark Kerr Campus is located within the Hayward Fault Zone making it susceptible to frequent breaks and leaks. The existing transmission pipeline from the water meter serving Clark Kerr Campus to Stonewall Road will be filled with cellular concrete then abandoned and approximately 4,800 ft. of 24-inch pipeline will be relocated onto city streets of Berkeley and Oakland. In addition, to facilitate the pipeline abandonment, two new tee connections and an isolation valve will be installed. This NOE supersedes the NOE filed in November 2017.

### **Attachments**

**NOE\_Alameda Cty\_Summit Pressure Zone 24 in Transmission Pipeline\_011221.pdf**

## **Contacts**

East Bay Municipal Utility District -

---

East Bay Municipal Utility District - *Timothy McGowan*

375 11th Street, MS 806  
Oakland, CA 94607  
Phone : (510) 287-1981  
timothy.mcgowan@ebmud.com

## **Regions**

Northern California

## **Counties**

Alameda

## **Cities**

Berkeley | Oakland

## **Location Details**

### **Other Location Info**

The Project is located in the cities of Berkeley and Oakland within Alameda County. The total length of new pipeline to be installed is approximately 4,800 ft. The alignment starts at the intersection of Claremont Avenue and Tanglewood Road, north on Tanglewood Road, west on Garber Street onto Claremont Boulevard, north on Claremont Boulevard, west on Forest Avenue, north on Piedmont Avenue, east on Dwight Way, and ending at the intersection of Prospect Street.

**Notice of Exemption**

**Exempt Status**

Categorical Exemption

**Type, Section Number or Code Number**

15302

**Reasons why project is exempt**

Under Section 15302 replacement or reconstruction of existing utility systems and/or facilities involving negligible or no expansion of capacity.

---

**Exempt Status**

Statutory Exemption

**Type, Section Number or Code Number**

15282 (k)

**Reasons why project is exempt**

Under Section 15282 (k) installation of new pipeline does not exceed one mile in length.

**County Clerk(s)**

*(None)*

---

Signature

---

Title

---

Date