

EBMUD

Residential & Commercial Rebates



Rolando Gonzalez
Water Conservation

August 1, 2020
Friends of Sausal Creek

EBMUD Water Rates

April 2020 update



- Residential

- Tier 1 - \$4.00

- First 172 gpd

- Tier 2 - \$5.51

- 173 gpd to 393 gpd

- Tier 3 - \$7.27

- 394 gpd and up

- CII

- Multi-family - \$5.66

- All others - \$5.63

- Non-potable water
\$4.39

Note: One unit is 100 cubic feet or 748 gallons

EBMUD Water Rates

FY 2021 update 6.25% increase



- Residential

- Tier 1 - \$4.25

- First 172 gpd

- Tier 2 - \$5.85

- 173 gpd to 393 gpd

- Tier 3 - \$7.72

- 394 gpd and up

- CII

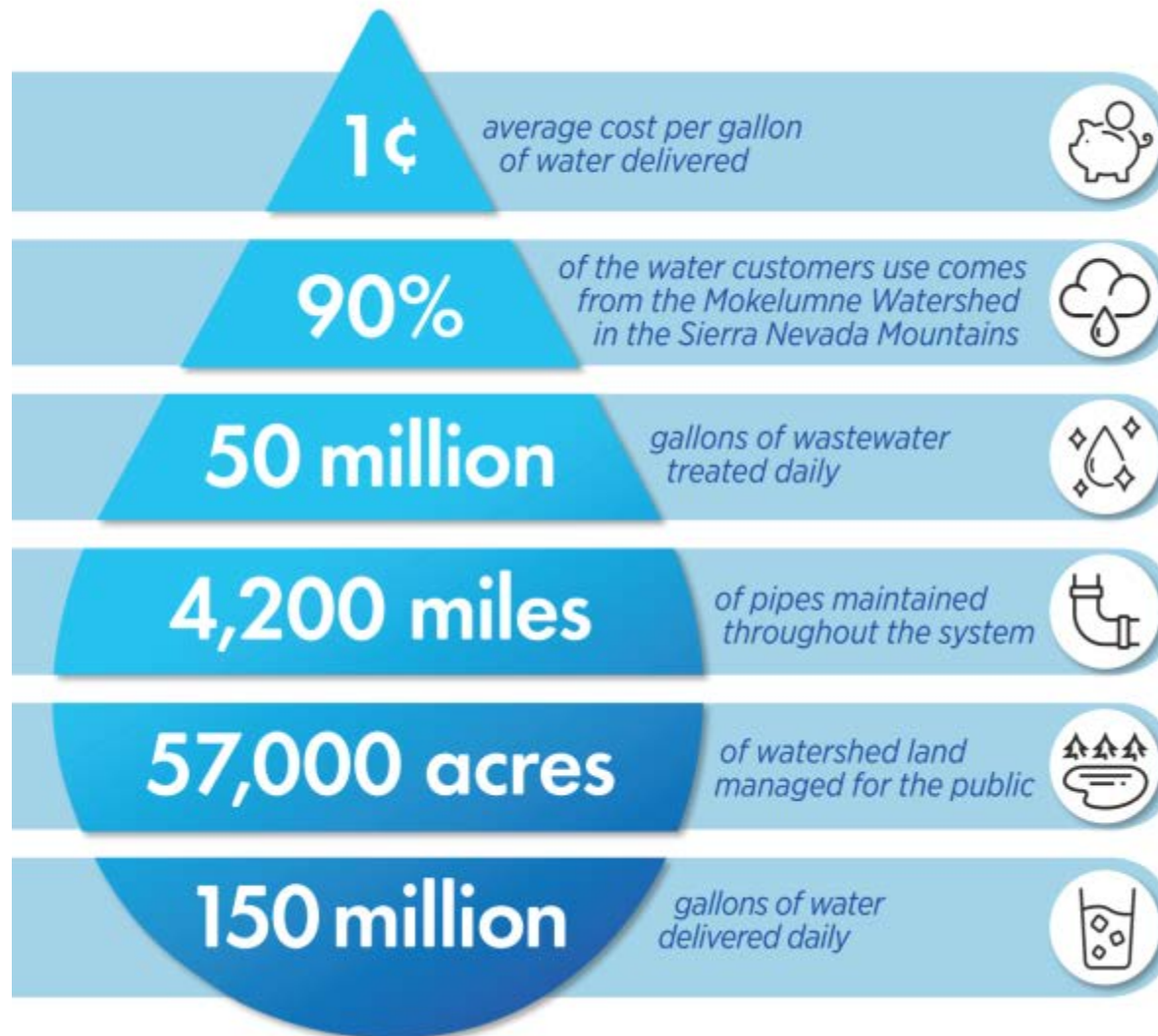
- Multi-family - \$6.01

- All others - \$5.98

- Non-potable water - \$4.66

Note: One unit is 100 cubic feet or 748 gallons

EBMUD at a Glance



EBMUD Commercial Landscape Programs



- Free irrigation **Auditing**.
- Free **Water Budget** reports for “Irrigation only” metered customers.
- **Rebates** to upgrade existing landscapes and irrigation deficiencies
- Free **Classes**: LAC Sustainable Landscape Speaker Series. CEUs available.



EBMUD Lawn Conversion and Irrigation Upgrade Rebate Program



Eligible upgrades:

- Lawn Conversion (.75/sq. ft.)
- Drip Conversion (.25/sq. ft.)
- High-Efficiency Nozzles (\$2-\$5ea)
- Self-Adjusting Controllers (\$75-\$125)
- Pressure Regulators (\$75-\$125)
- Irrigation Flow Meter Pilot (up to \$200)



Up to \$2,000 Residential.

Up to \$15,000 - Commercial & Multi-family (5 or more units)

- Over a two year period

Landscape Upgrade Rebate Process



- Submit application before starting project
 - list of low-water use plants
 - pictures of existing landscape and irrigation on
 - sq. ft. and/or number of devices
 - 3" of mulch
 - compost encouraged
- Six month deadline to complete project
- Post inspection required



My Water Report Portal



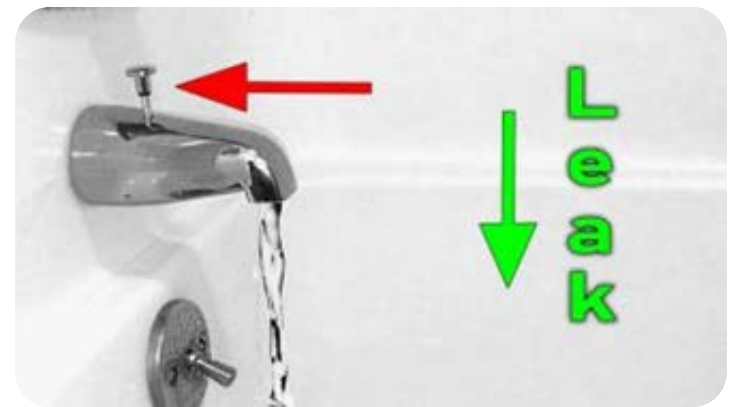
- Available for all accounts
- Track water usage
- Set leak alerts
- Some with AMI, provides hourly data.



How to save water. It's Easy! Showerheads



- A 2.0 GPM showerhead or less
- Take showers which are 10 minutes or less.
- A 10 minute shower with a 2.0gpm head uses 20 gallons; 15 minutes uses 30 gallons, etc.
- Use a shower valve shut-off valve to only use water when needed
- When showerhead is on, no water should be coming from spigot below.

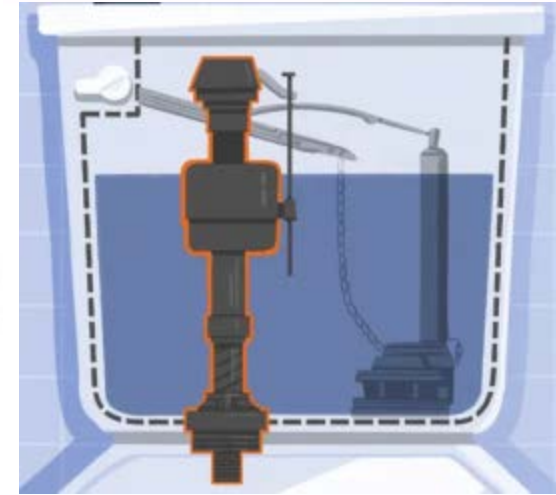


How to save water. It's Easy!

Toilets



- 3.5gpf should be replaced. 1.28gpf or lower is optimal.
- Check the tank water level. 1 to ½ inch below the top of overflow tube.
- Check for leaks: Put a dye tab in tank. Wait 10-15 minutes. If color begins to appear on bowl = Leak.



How to save water. It's Easy!

Bathroom Sink



- Bathroom sinks should have an aerator.
- An aerator is device that restricts flow.
- Bathroom aerators should be 1 gpm.
- If there is no aerator present, water can flow 3 to 5gpm



How to save water. It's Easy! Kitchen Sink



- Kitchen sinks should have an aerator.
- An aerator is device that restricts flow.
- Kitchen sinks aerators should be 1.5 or 1.8gpm.
- If there is no aerator present, water can flow 3 to 5gpm



EBMUD provides Free Devices



Limits

Single-family accounts:

- 1 kitchen faucet aerator
- 1 hose nozzle
- 2 bathroom faucet aerators
- 1 handbook
- Multi-family accounts:

1 set per dwelling unit.

- 1 lifetime distribution per account. If you have previously received devices for a property, you are no longer eligible for that property.
- You must own the property or have the water account in your name

Thank you!



Rolando Gonzalez
Water Conservation
Representative
510-287-0594

