



**SEQUENCE OF CONSTRUCTION**

- CONSTRUCTION OF VALVE STRUCTURE SHALL TAKE INTO CONSIDERATION SPACE REQUIREMENTS FOR PRE-STRESSING CONCRETE TANKS.
- IF THE CONTRACTOR CHOOSES TO START WITH THE FOUNDATION OF THE VALVE STRUCTURE, THE WALLS SHALL BE PLACED UP TO EL 218.0 TO ALLOW FOR PRE-STRESSING OF TANKS, AS SHOWN ON 501.29-S-018. PORTIONS OF THE VALVE STRUCTURE WALLS, ROOF AND BEAMS AS WELL AS BACKFILLING THE RESERVOIRS, SHALL BE COMPLETED AFTER PRE-STRESSING OF THE RESERVOIRS IS COMPLETE AND RESERVOIRS HAVE PASSED THE LEAKAGE TEST
- IF THE CONTRACTOR CHOOSES TO START AND COMPLETE THE VALVE STRUCTURE AFTER THE TANKS ARE PRE-STRESSED, THE I/O LINES AND SUB-DRAINS SHOWN ON 501.29-C-003, SHALL BE CONSTRUCTED AND CAPPED BEFORE BACKFILLING WITH CLSM TO EL 218.0.
- EXISTING POWER PANEL AT THE HEADHOUSE SHALL BE POWERED THROUGH THE 480V SWITCHGEAR AND TESTED PRIOR TO REMOVAL OF SERVICE OF EXISTING CLEARWELL AND 12 KV CONDUITS, SHOWN ON E-014D, SEE ELECTRICAL DRAWINGS.
- GRADING WORK SHOWN ON DRAWING C-011 SHALL OCCUR ONLY AFTER GRADING SHOWN ON DRAWING C-015 IS COMPLETE.

**GENERAL NOTES**

- FOR PAVING, SEE C-003.
- FOR YARD PIPING SEE C-100 TO C-105.
- FOR DRAINAGE PIPES SEE C-106.
- FOR TEMPORARY CONSTRUCTION AND SOIL STORAGE, SEE C-001.1.
- THE FINAL GRADING CONTOURS SHOWN HEREIN DEFINE MAXIMUM ON-SITE STORAGE CAPACITY FOR SPOIL STORAGE TO MINIMIZE OFF HAUL.
- DO NOT USE IMPORT SOIL IF SPOILS CAN BE RECYCLED AS SPECIFIED IN SECTION 31 23 23.

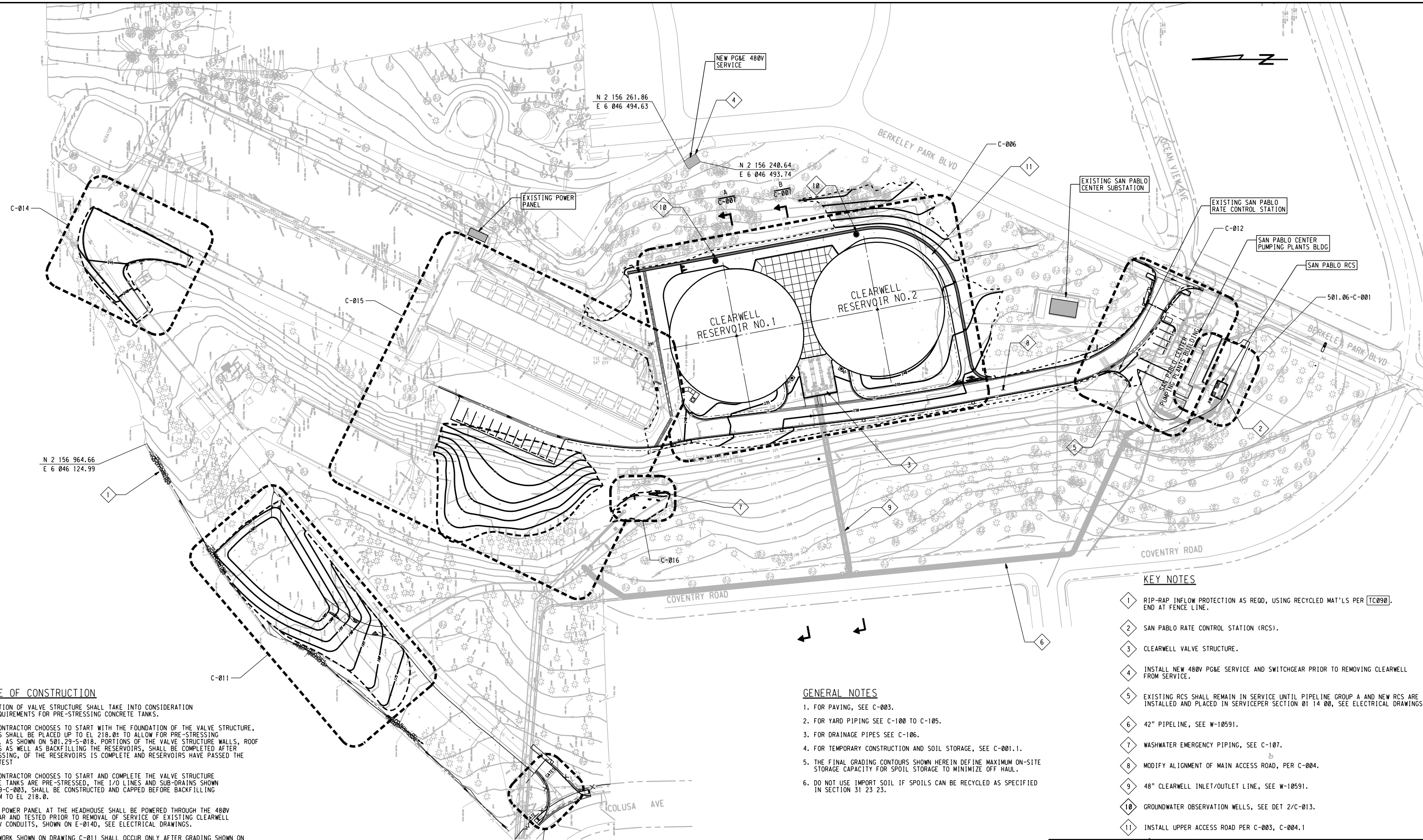
**KEY NOTES**

- RIP-RAP INFLOW PROTECTION AS REQD, USING RECYCLED MAT'L'S PER TC090. END AT FENCE LINE.
- SAN PABLO RATE CONTROL STATION (RCS).
- CLEARWELL VALVE STRUCTURE.
- INSTALL NEW 480V PG&E SERVICE AND SWITCHGEAR PRIOR TO REMOVING CLEARWELL FROM SERVICE.
- EXISTING RCS SHALL REMAIN IN SERVICE UNTIL PIPELINE GROUP A AND NEW RCS ARE INSTALLED AND PLACED IN SERVICE PER SECTION 01 14 00, SEE ELECTRICAL DRAWINGS.
- 42" PIPELINE, SEE W-10591.
- WASHWATER EMERGENCY PIPING, SEE C-107.
- MODIFY ALIGNMENT OF MAIN ACCESS ROAD, PER C-004.
- 48" CLEARWELL INLET/OUTLET LINE, SEE W-10591.
- GROUNDWATER OBSERVATION WELLS, SEE DET 2/C-013.
- INSTALL UPPER ACCESS ROAD PER C-003, C-004.1

**SITE PLAN**

1"=60'

3" ON ORIGINAL DOCUMENT



DESIGNED BY <i>J. Nouri</i> JOSEF NOURI		EAST BAY MUNICIPAL UTILITY DISTRICT OAKLAND, CALIFORNIA	
DESIGN CHECKED BY <i>Paul W. Franzeschi</i> PAUL W. FRANZESCHI		SAN PABLO WATER TREATMENT PLANT CLEARWELL AND RCS REPLACEMENT CIVIL	
DRAWN BY FACILITY DRAFTING		GENERAL SITE PLAN	
PROJECT MANAGER R.P.E. NO. C69550 <i>Ken Smith</i>		PROJ. NO. Z-012	
PROJECT ENGINEER R.P.E. NO. C75271 <i>J. Nouri</i>		SCALE AS SHOWN	
RECOMMENDED: SENIOR CIVIL ENGR. R.P.E. NO. C38146 <i>Paul W. Franzeschi</i>		501.00-C-001	
APPROVED: NO. OF DESIGN R.P.E. NO. C48598 <i>S. Teichert</i> SERGE Y. TEBERT		DATE 18SEP2018	
		STRUCT. DISC. NUMBER REV.	
		0	