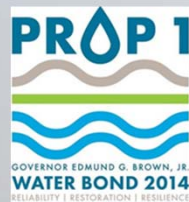


GROUNDWATER SUSTAINABILITY AGENCY FORUM

EAST BAY PLAIN SUBBASIN STAKEHOLDER COMMUNICATION & ENGAGEMENT

MARCH 21, 2019



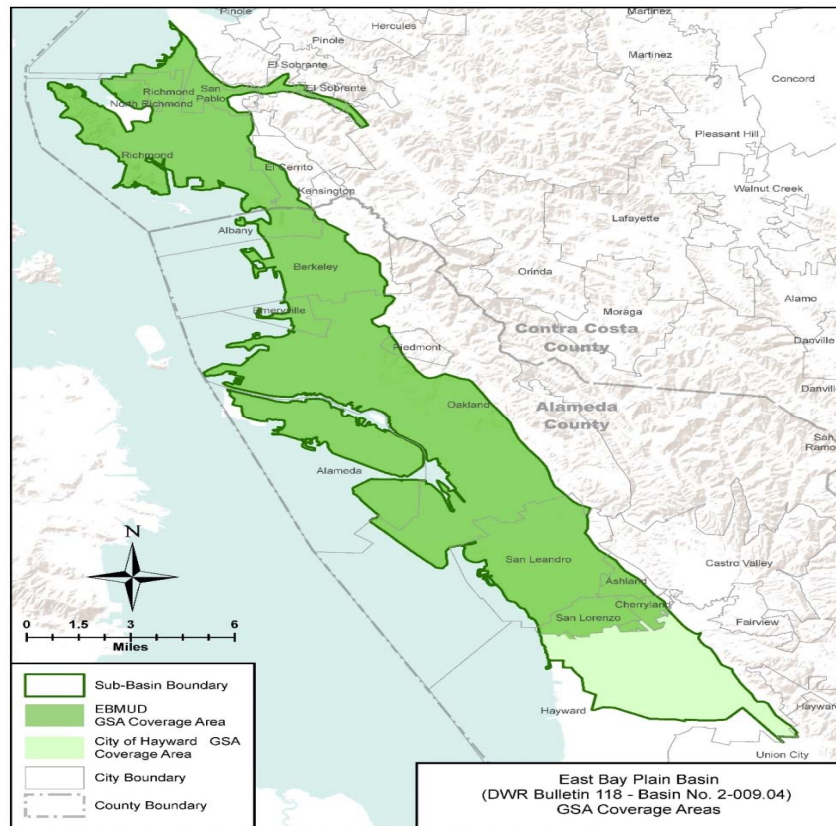
AGENDA

- EAST BAY PLAIN SUBBASIN SETTING
- BENEFICIAL USES AND USERS OF THE SUBBASIN
- OUTREACH APPROACH
- **STAKEHOLDER COMMUNICATION & ENGAGEMENT PLAN**
- CHALLENGES & SUCCESSES
- Q&A

EAST BAY PLAIN SUBBASIN SETTING

EAST BAY PLAIN SUBBASIN GSA COVERAGE

East Bay Plain Subbasin Area - 111.4 sq-miles
 EBMUD GSA Area - 95.3 sq-miles
 Hayward GSA Area - 16.1 sq-miles



East Bay Plain Basin
 (DWR Bulletin 118 - Basin No. 2-009.04)
 GSA Coverage Areas

Document Path: L:\ArcGIS\ArcGIS Maps\Department_Of_Water_Resources\EBMUD_GSA_Basin_Boundary3.mxd



2 Counties - Alameda & Contra Costa
 11 Cities in the subbasin area
 5 unincorporated areas



BENEFICIAL USES AND USERS OF THE SUBBASIN

STAKEHOLDER IDENTIFICATION

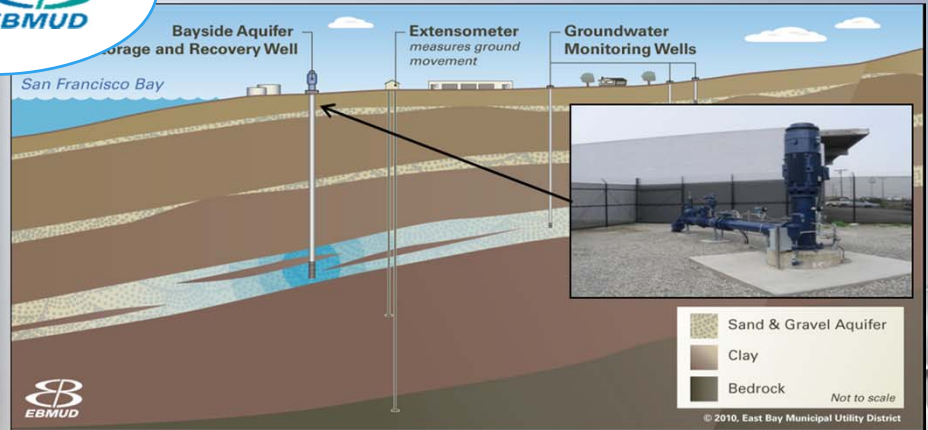
- **Water code §10723.2** – Consideration of all interests of all beneficial uses and users of groundwater
- Stakeholder Communication and Engagement Guidance Document
(Page 7 – *Stakeholder Engagement Chart for GSP Development*)

- **General Public*** – including domestic users and disadvantaged communities
- **Land Use Planning Agencies** - Cities and Counties
- **Private users** – Golf courses, Cemeteries, Schools, Colleges, Parks and Hospitals
- **Urban/Ag Users** – Municipal well operators**, Public Water Systems, No known ag users
- **Industrial users*****- Historically Granny Goose, Fleischmann's Yeast
- **Environmental Users and Ecosystem*****
- **Economic Development** – Elected officials and representatives
- **Human Right to water** – DACs/SDACs
- **California Native American Tribes**
- **Federal and State Government lands**
- **Integrated Water Management** - IRWM

* Existing 5,478 BFDs and additional 1,619 BFDs (to be installed). DAC/SDAC served by public water systems

EBMUD, Hayward *Yet to be identified

EMERGENCY SUPPLY FOR HAYWARD and DROUGHT SUPPLY FOR EBMUD



OUTREACH APPROACH

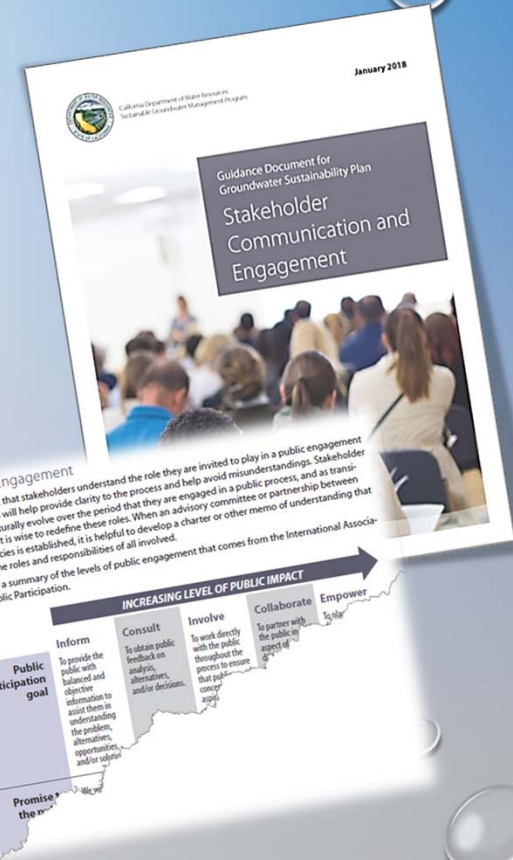
A PLANNED APPROACH

East Bay Plain Subbasin stakeholder outreach approach consists of two steps:

Step 1: Prepare a comprehensive stakeholder communication and engagement plan as per the guidance document for GSP Stakeholder Communication and Engagement;

Step 2: Implement the plan to:

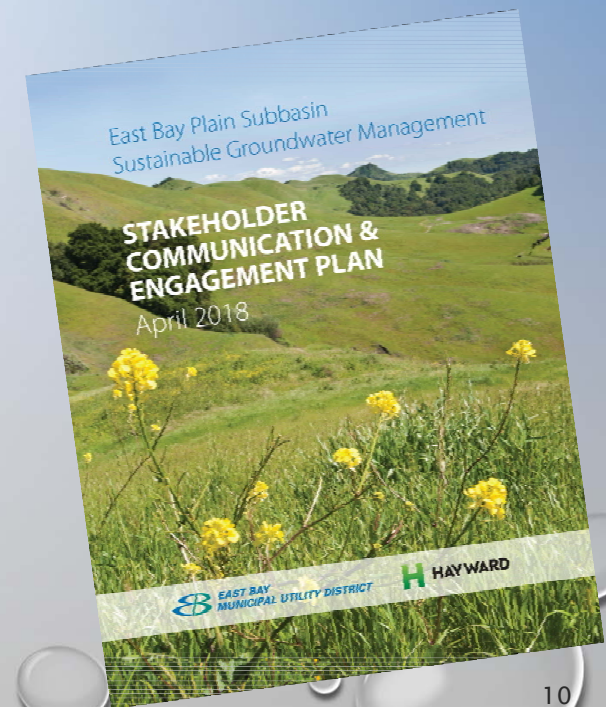
- Be in compliance with Water Code §10723.2
- Meet criteria of CCR § 354.10. in preparing the Notice and Communication Section of the GSP



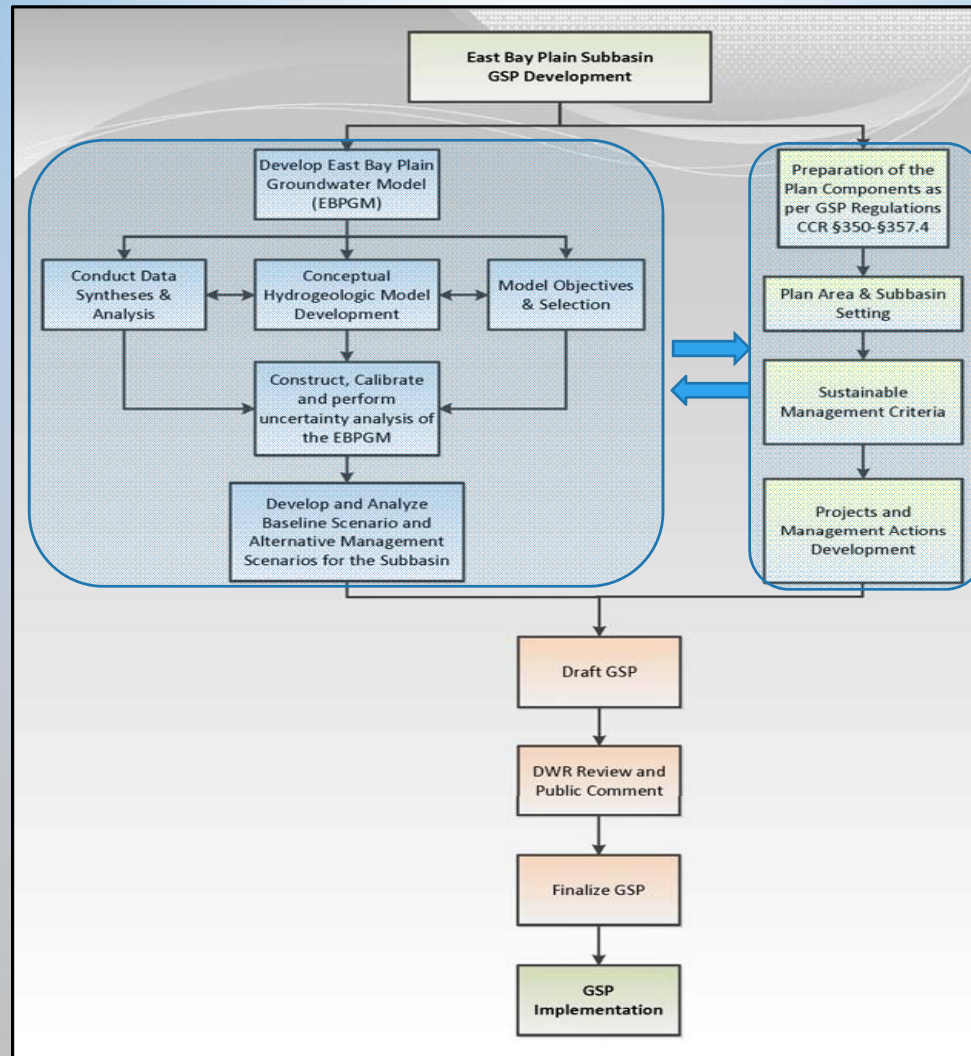
EAST BAY PLAIN SUBBASIN STAKEHOLDER COMMUNICATION & ENGAGEMENT PLAN (C&E PLAN) OBJECTIVES

In compliance with CCR § 354.10. Notice and Communication, the objectives of the C&E plan are:

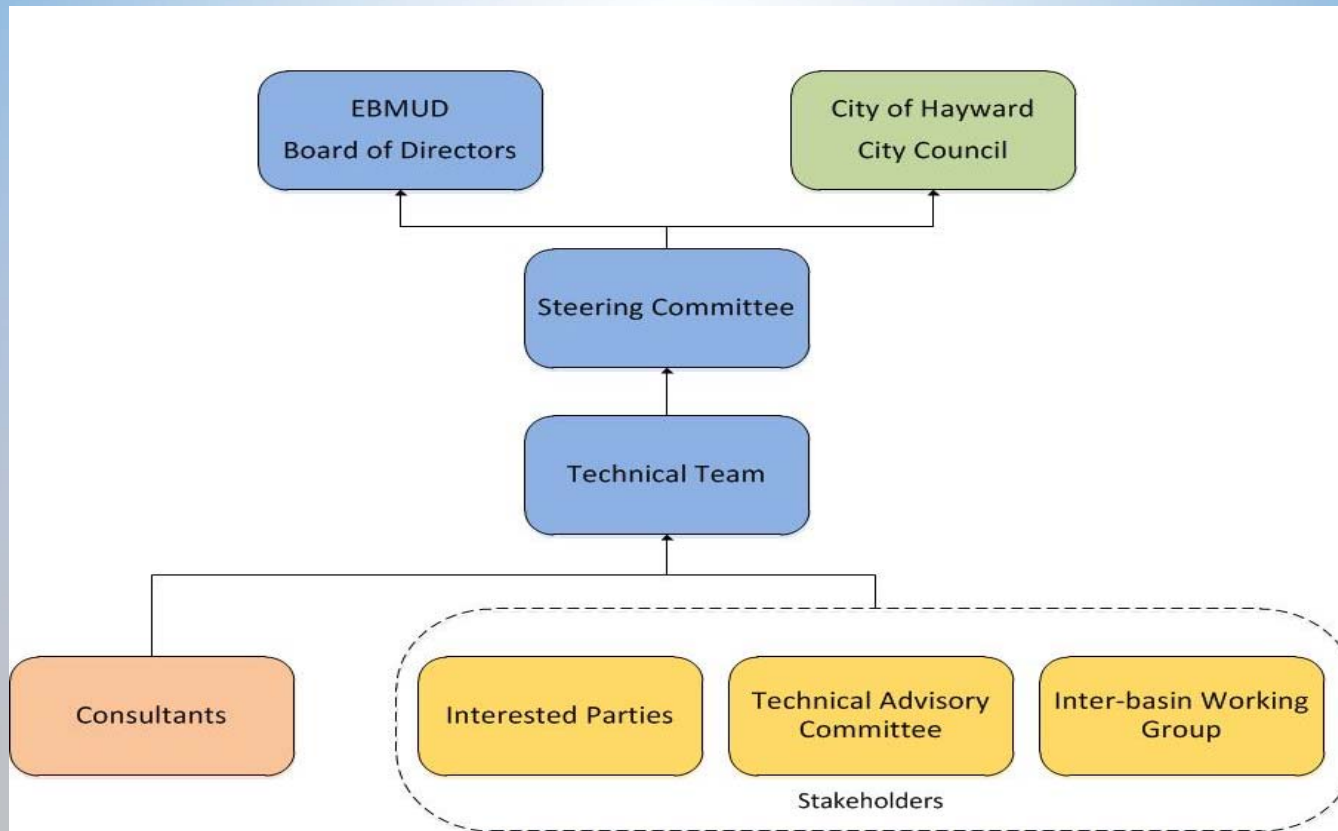
1. To explain the GSAs' **decision-making process**
2. To **identify opportunities** for public engagement and discuss **how public input and response will be used**
3. To describe how the GSAs **encourage** active involvement of diverse social, cultural, and economic elements of the population within the basin
4. To **outline the methods** the GSAs shall follow to inform the public about progress, implementing the plan, including the status of projects and actions



OVERVIEW OF GSP DEVELOPMENT PROCESS

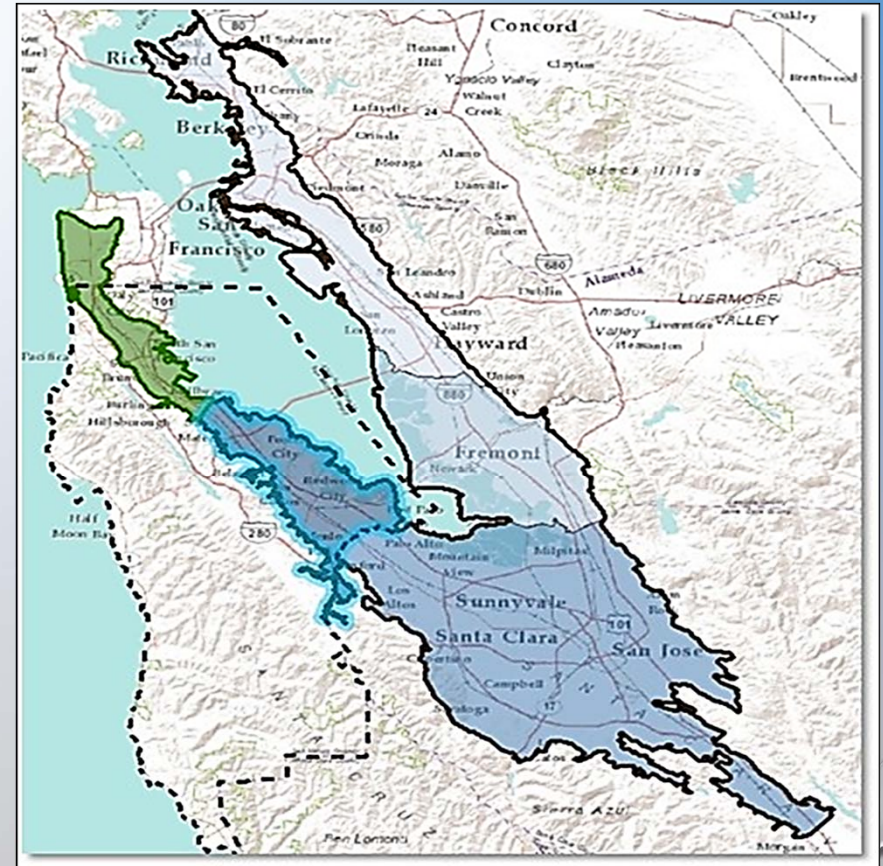


COLLABORATIVE DECISION MAKING PROCESS



INTERBASIN WORKING GROUP (IWG)

- First meeting to be held this summer
- Anticipated IWG members are:
 - Alameda County Water District (Niles Cone Subbasin)
 - San Mateo County (San Mateo Plain Subbasin)
 - Santa Clara Valley Water District (Santa Clara basin)
 - West of the bay basins (Marina, Lobos, Downtown, Islais Valley, South San Francisco, Visitacion Valley, Westside basins)
 - North of the bay basins (TBD)



Reference: San Mateo County Groundwater Assessment

TECHNICAL ADVISORY COMMITTEE (TAC)

- Stakeholders in the basin with:
 - Relevant technical background
 - Broad range of interests - environmental, science, academic, technical and other fields, as well as diversity in perspectives
- Role and responsibilities
 - Review technical work products
 - Provide comments and recommendations to GSAs
- Commitment from TAC members
 - Collaboration and cooperation
 - Regular meeting attendance
 - Review and comment on documents within established deadlines

TAC FORMATION PROCESS

- Statement of interest and qualifications
 - Description of interest in TAC participation
 - Description of qualifications
 - Availability
- Recommendation to steering committee for final selection
- Orientation session to review the mission, objectives, ground rules and decision-making process

Appendix B



East Bay Plain Subbasin Groundwater Sustainability Plan (GSP) Development

APPLICATION FOR APPOINTMENT TO THE GSP Technical Advisory Committee (TAC)
Applications will be accepted from stakeholders of the East Bay Plain Groundwater Basin boundary.
A boundary map is available at www.ebmud.com/sgma
Application Deadline is 4:00 PM Pacific Time on (to be determined)

NAME _____ DATE _____
RESIDENCE ADDRESS _____ CITY _____ ZIP _____
DAYTIME PHONE _____ EMAIL _____
EMPLOYER _____ OCCUPATION _____

When are you available to attend committee meetings?
Weekday Mornings Weekday Afternoons Weekday Evenings

GROUNDWATER SUSTAINABILITY PLAN TECHNICAL ADVISORY COMMITTEE PURPOSE

The Groundwater Sustainability Plan (GSP) Technical Advisory Committee will be responsible for reviewing the scope of work, draft products and materials prepared by consultants, analyzing them and providing recommendations to the GSP Technical Team to develop a technically sound GSP. The East Bay Plain Subbasin Stakeholder Communication and Engagement Plan (C&E Plan) outlines further details. The draft C&E Plan is available at <http://www.ebmud.com/sgma>.

The members of the TAC will be selected to represent GSP-related subject areas, including but not limited to environmental, technical, and land use planning fields. GSP TAC members will work collaboratively with EBMUD and the City of Hayward staff.

Participation in the TAC is a volunteer activity and participants' time for the TAC activities will not be compensated by the GSAs. The TAC will meet on a more frequent interval than the stakeholder meetings depending upon need for reviews. Participants must be available to attend regular TAC meetings, review the materials, and provide recommendations, in accordance with deadlines, from July 2018 through January 2022. Specific time commitments to complete the work will vary throughout the process.

Personal information on this form will become a matter of public record subject to disclosure under the California Public Records Act (California Government Code section 6250 et. seq.)

Page 18

TECHNICAL ADVISORY COMMITTEE (TAC) FORMATION

- Started the TAC formation process in FEB 2018
- The following are the current TAC members:
 - Mitchell Buttress (City Of Berkeley)
 - Alyx Karpowicz (SFRWQCB)
 - Jan Lee (or) a Designee (City Of Hayward)
 - Preston Jordan (Lawrence Berkeley Lab)
 - Ken Minn (EBMUD)
 - Karineh Samkian (City of San Pablo)
 - Ryan Smith (or) a Designee (City Of Richmond)
 - Erin Smith (City Of Alameda)
 - Michelle Sneed (USGS)
 - Jamar Stamps (Contra Costa County Water Agency)
 - James Yoo (Alameda County Public Works Agency), and
 - Representatives from Environmental Groups such as The Nature Conservancy, Sierra Club, etc. (TBD)



Communication and Engagement through Multimedia Outlets



Search EBMUD...

Home Customers Water Wastewater Recreation About us

Sustainable Groundwater Management

Home / Water / About your water / Water supply / Sustainable Groundwater Management

Current Updates



1/8/2019 - DWR completed the 2018 SGMA Basin Prioritization process to reassess the priority of the groundwater basins following the 2016 basin boundary modifications, as required by the Water Code. The final results are published on January 4, 2019. From this process, the East Bay Plain Subbasin was determined as a Medium Priority Subbasin.

The following is the link to DWR's basin prioritization page:

<https://water.ca.gov/Programs/Groundwater-Management/Basin-Prioritization>

12/18/18 - A Proposition 1 Sustainable Groundwater Planning grant agreement was executed between Department of Water Resources and EBMUD on November 9, 2018. The \$1 million grant funding is to assist EBMUD in financing the East Bay Plain Subbasin Groundwater Sustainability Plan Development Project. A copy of executed grant agreement is posted in the Resource Documents below.

9/11/18 - The questions and answers to East Bay Plain GSP Development RFP are posted under "Resource Documents" below.

8/27/18 - The pre-proposal meeting sign-in sheet and a copy of the presentation are posted under "Resource Documents" below.



Sustainable Groundwater Management Act



In September 2014, Governor Brown signed into law three bills collectively known as the Sustainable Groundwater Management Act (SGMA). SGMA creates a statewide framework for sustainable, local groundwater management in California.

SGMA requires eligible local agencies overlying certain basins to form Groundwater Sustainability Agencies (GSAs). GSAs are required to develop Groundwater Sustainability Plans (GSP) to make basins sustainable within 20 years of implementation.

- Urban Water Management Plan
- Water Supply Management Program 2040
- Mokelumne/Amador/Calaveras Integrated Regional Water Management Plan
- EBMUD and the Delta
- Water Right Permit 10478 Time Extension Project
- The State Water Resources Control Board Delta Flow Criteria
- Water supply reports
- Water transfers
- Sacramento River Water Supply
- › Sustainable Groundwater Management
 - Sustainable groundwater management mailing list



EBMUD
1,525 Tweets

Tweets Tweets & replies Media Likes

EBMUD @ebmud · 3/4/19
@ebmud and @cityofhayward are kicking off development of a Groundwater Sustainability Plan for the East Bay Plain, thanks in part to a \$1 million grant from the @CA_DWR. Learn more: ebmud.com/sgma

GOVERNOR GAVIN NEWSOM
WATER BOND 2014
RELIABILITY | RESTORATION | RESILIENCE

17

The background of the slide features a light blue to white gradient. Scattered across the top and right sides are several realistic water droplets of various sizes, some with highlights and shadows, giving a fresh and clean aesthetic.

CHALLENGES & SUCCESSES

“The biggest challenge is to stay focused. It's to have the discipline when there are so many competing things.”

-Alexa Hirschfeld

CHALLENGES:

- Data gaps
- Identifying domestic and industrial users and usages
- Hydrogeologic boundaries around the edges
- Reconciling various interest such as preventing higher groundwater level vs. storm water recharge

SUCSESSES:

- Increasing participation
- Active engagement
- Constructive feedbacks
- Providing data and support

FOR MORE INFORMATION

Contact for EBMUD:

Ken Minn

510-287-0668

ken.minn@ebmud.com

www.ebmud.com/sgma

Contact for the City of Hayward:

Jan Lee

510-583-4701

jan.lee@Hayward-ca.gov

www.hayward-ca.gov/sgma