



Bayside Facility

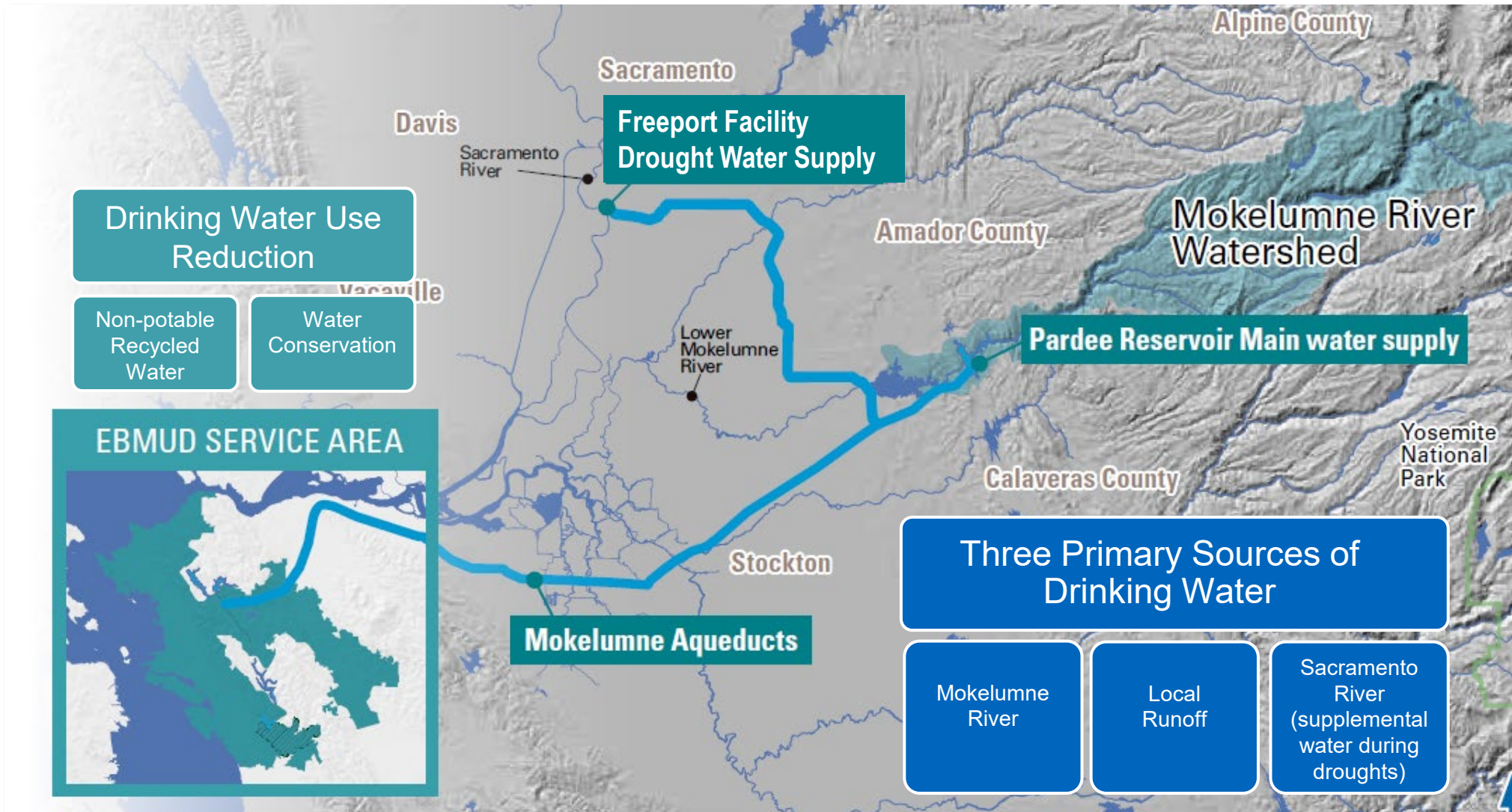
Bayside Community Group

June 25, 2026

Meeting Goals and Objectives

- Provide facts about the Bayside Facility and status of the Bayside well demolition
- Share information about EBMUD's long-term water supply plans
- Listen to and address questions and concerns

EBMUD Water Supply



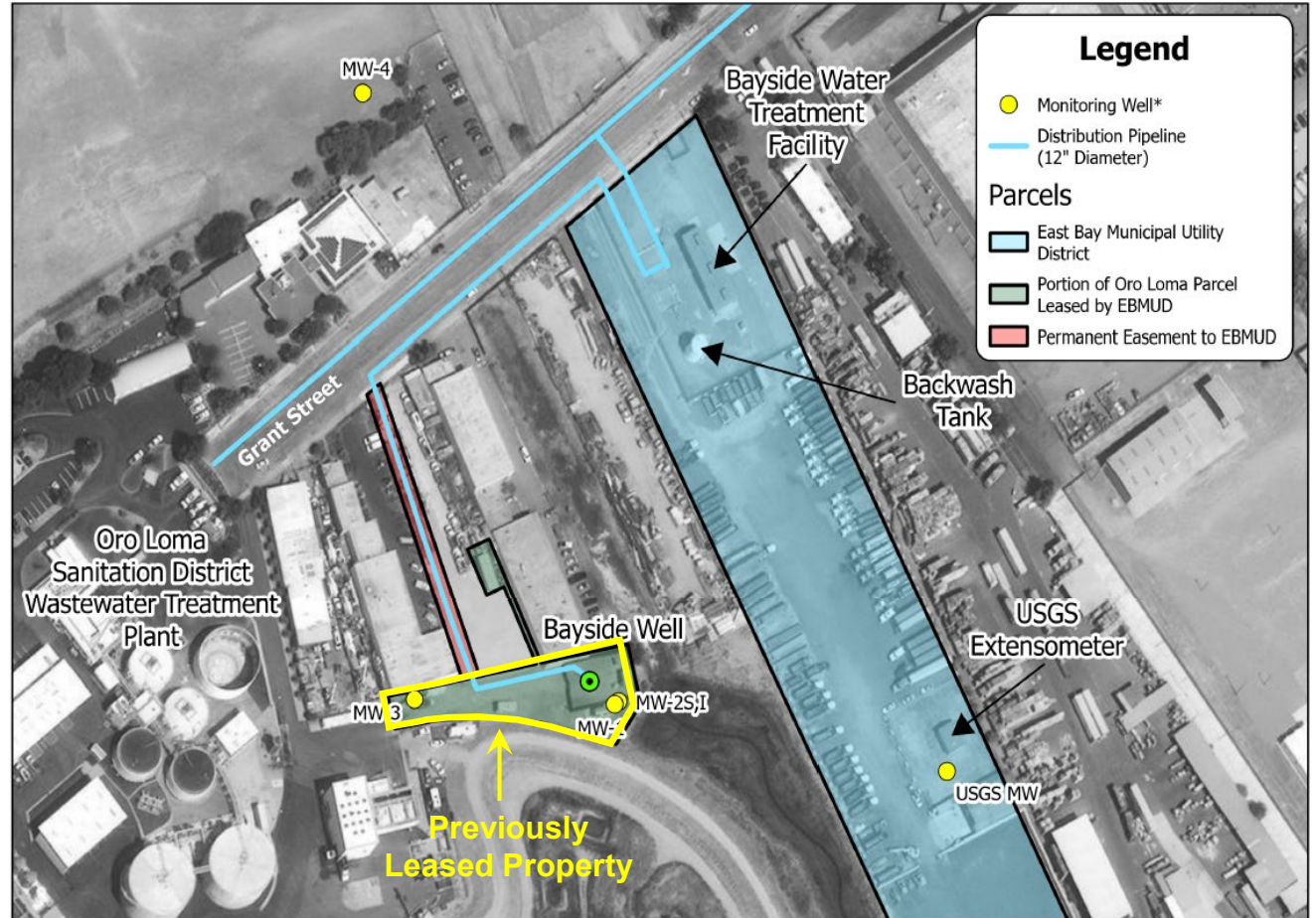
EBMUD Future Water Needs & Supplemental Supply Strategy

- EBMUD plans for future water needs over the next 20 – 30 years to ensure a resilient and reliable water supply
- By 2050, EBMUD forecasts up to 15,000 acre-feet of additional water may be needed during a third consecutive year of a drought
 - Annual water use of about 78,000 homes
 - EBMUD is developing a long-term groundwater banking project in San Joaquin County to meet future water needs



Bayside Well Demolition Status

- EBMUD's lease with Oro Loma Sanitary District (OLSD) for the Bayside well ended in August 2024
- Demolition of the Bayside well is underway
- Responsibilities:
 - EBMUD disconnected and plugged the distribution pipeline on OLSD property
 - OLSD removed equipment and hired a contractor to seal and fill the Bayside well plus 4 monitoring wells
- Demolition anticipated to be completed by September 2026

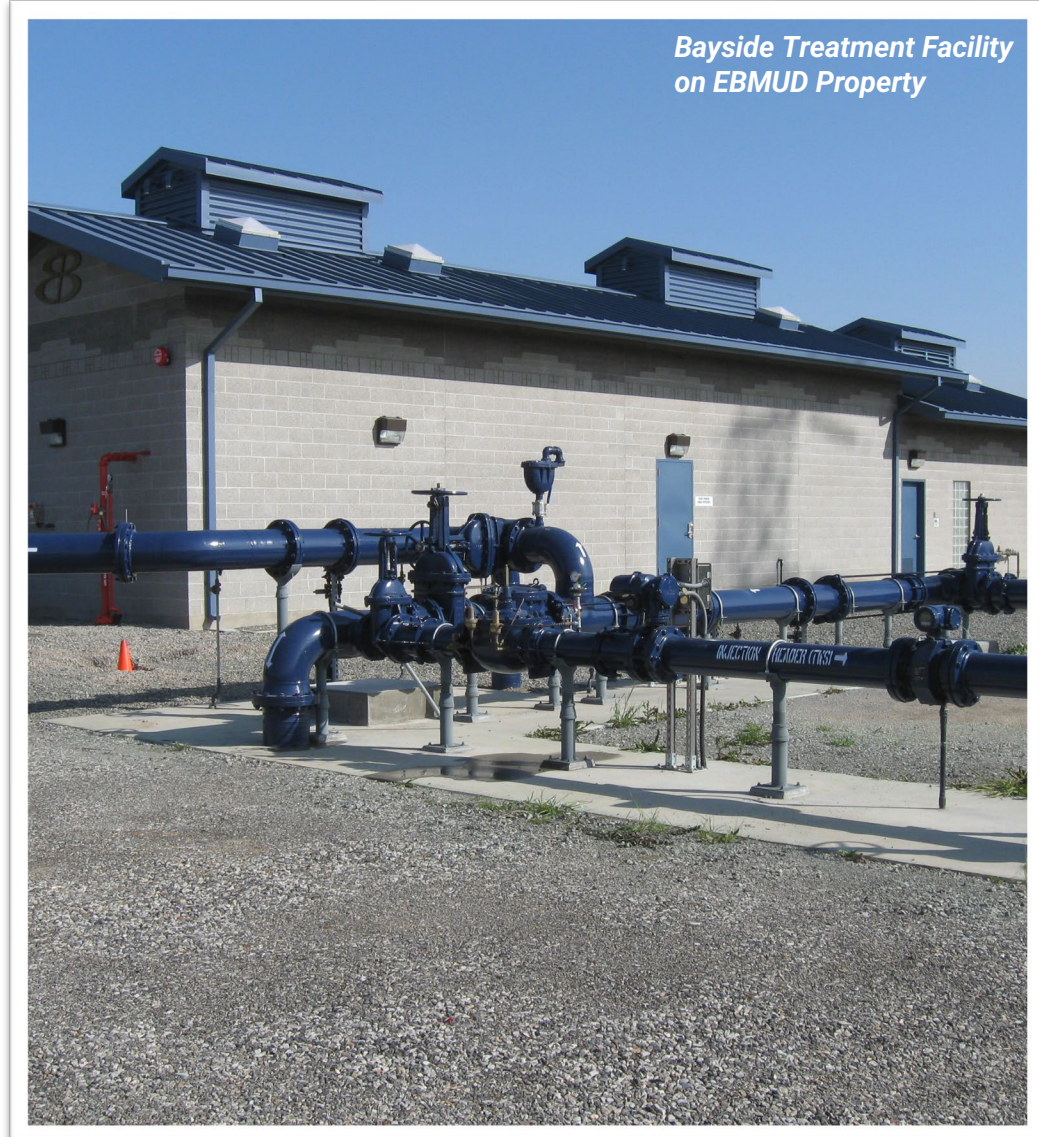


0 60 120 240 US Feet



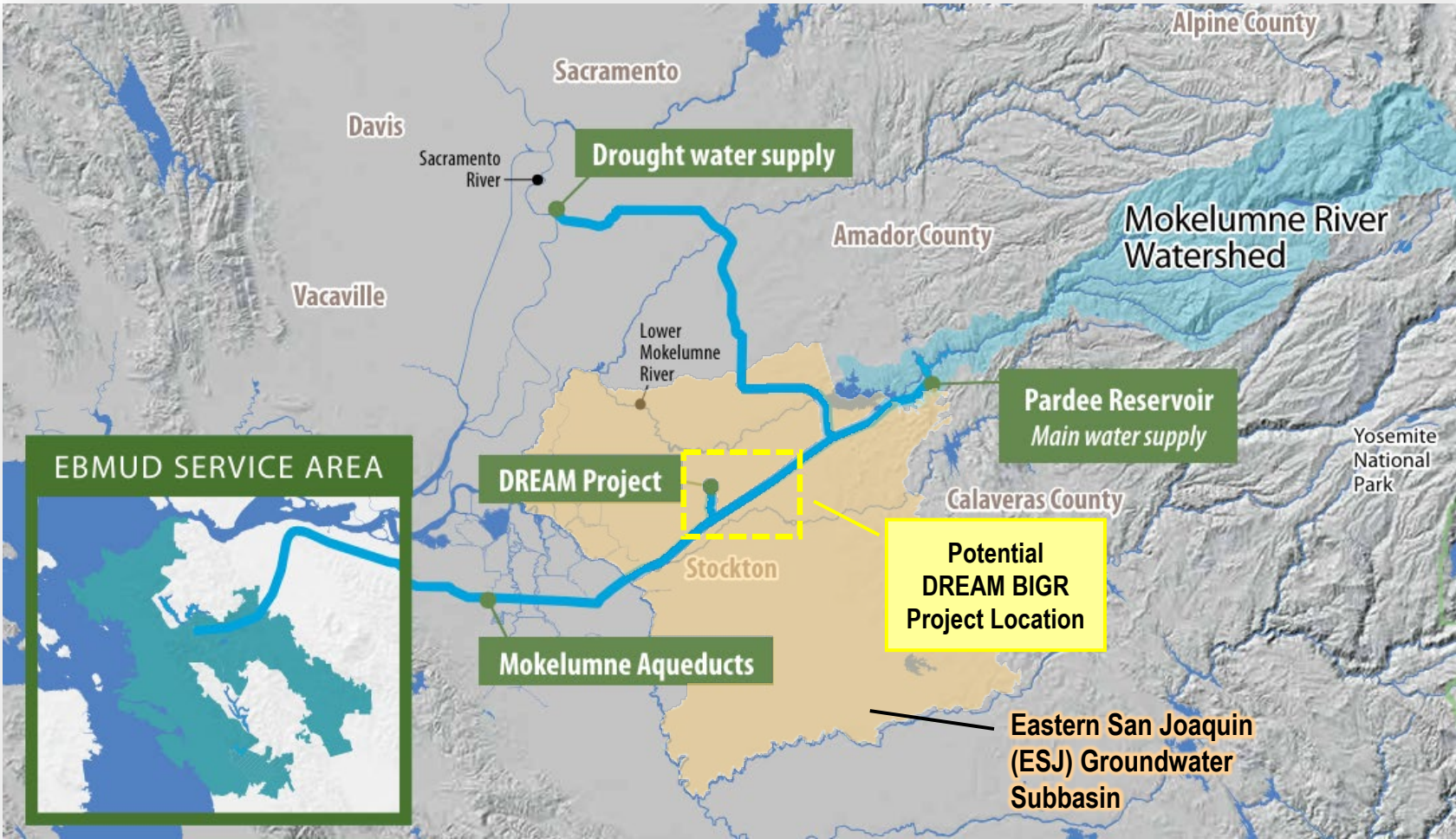
EBMUD Groundwater Storage & Management

- San Joaquin County groundwater banking project could provide more drought-year supply than Bayside and meet EBMUD's future need for water
- Bayside remains a potential future EBMUD supplemental water supply option
- EBMUD manages the East Bay Plain Subbasin to maintain sustainable groundwater conditions for current and future use



Groundwater Banking

DREAM BGR Project



- DREAM BGR concept is being developed after the successful 2024 DREAM pilot project
- Surplus EBMUD Mokelumne River water is stored in the ESJ Subbasin, with a portion for future EBMUD drought use and remainder to support recharge
 - Drought yield up to 20,000 acre-feet
- Partners have executed a Memorandum of Understanding to advance feasibility evaluation

*DREAM BGR: Diversion, Recharge, Extraction, and Aquifer Management – Basin Innovation for Groundwater Resources
Partners: North San Joaquin Water Conservation District, Stockton East Water District, and EBMUD*

East Bay Plain Subbasin Groundwater Management



- Subbasin managed by EBMUD and City of Hayward GSAs; required under the Sustainable Groundwater Management Act to develop and implement a Groundwater Sustainability Plan (GSP)
- Limited groundwater pumping of around 3,600 acre-feet annually, or about 4% of the water used within the Subbasin, primarily for irrigation and industrial uses
- Subbasin is currently sustainable and meets all six State-required sustainability standards
- 2022 Subbasin GSP is undergoing its required 5-year update due to DWR by January 31, 2027

Future Bayside Community Group Meetings

- Once the demolition is completed, annual meetings will be placed on hold until new project activity is planned or new information is available
- Bayside Community members can sign up to be on the EBP Subbasin GSP General Stakeholders list to receive updates by emailing groundwater@ebmud.com
- Members can reach out to Laura Luong, laura.luong@ebmud.com, anytime if there are any questions

Data Available to the Public

- Bayside monitoring data and reports on EBMUD's webpage
 - <https://www.ebmud.com/bayside>
- East Bay Plain Subbasin Data Management System
 - <https://eastbayplainedms.com/>
- Sustainable Groundwater Management Act Data Viewer
 - <https://sgma.water.ca.gov/webgis/?apid=SGMADataViewer>

East Bay Plain Subbasin DMS | EBMUD HAYWARD

Sustainability Indicators

Groundwater Levels	✓ 1
Groundwater Storage	✓ 1
Seawater	✓ 1
Water Quality	✓ 1
Land Subsidence	✓ 1
Surface Water	✓ 1

Map showing the East Bay Plain region, including cities like Richmond, Berkeley, Oakland, San Francisco, San Leandro, Hayward, and Alameda. A 2028 ft contour is also visible.

Questions and Comments



Flowing
into the
Future