



Water Supply Update

Board of Directors

April 14, 2026

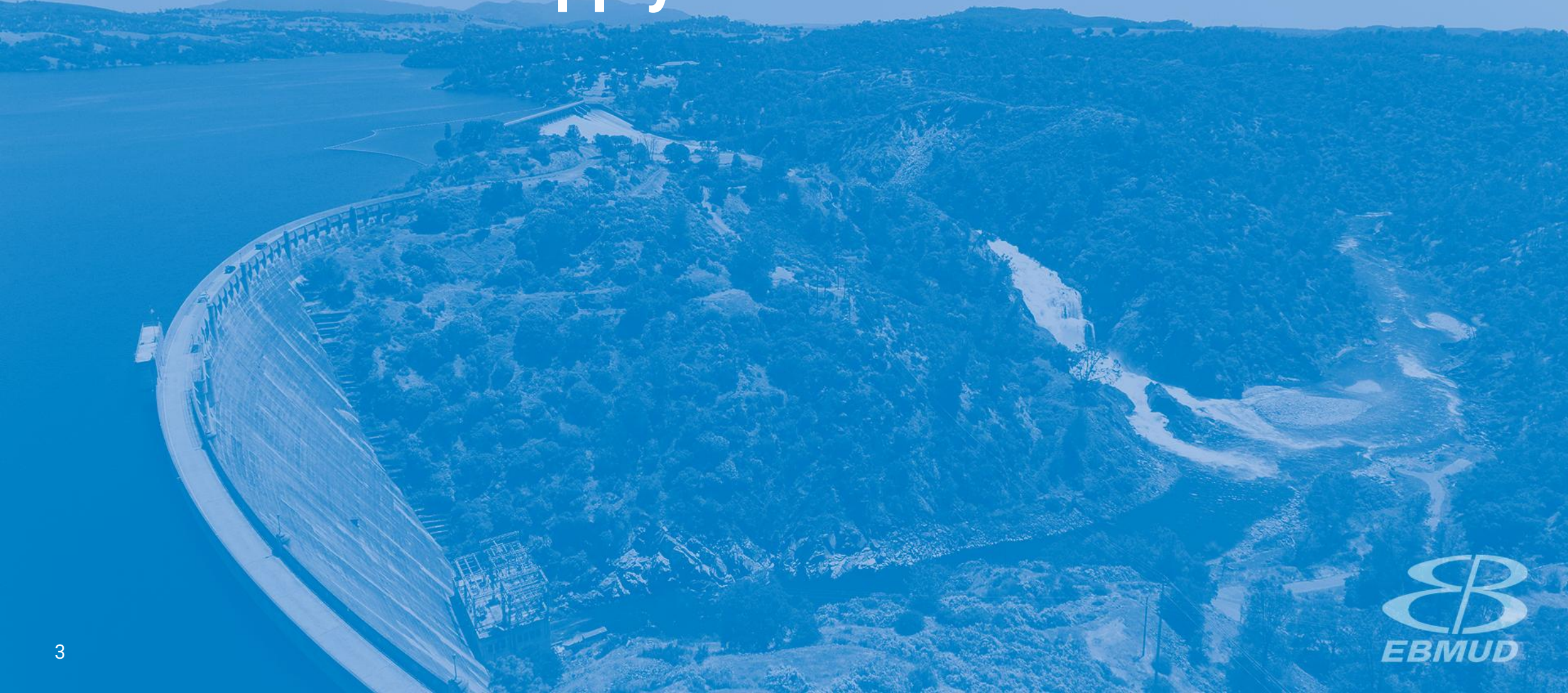
Roberto C. Cortez, Manager of Water Operations



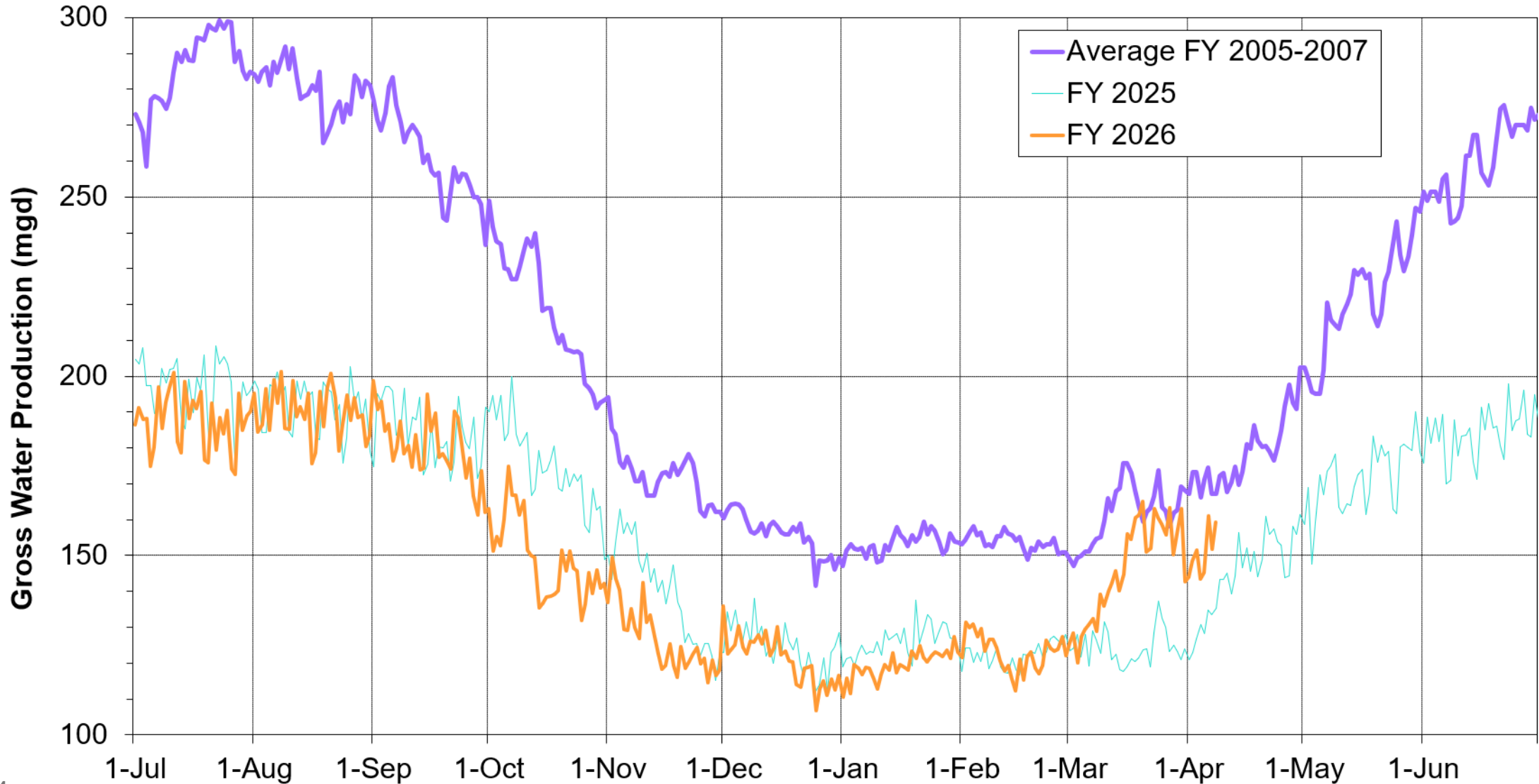
Briefing Topics

- Current Water Supply
- Seasonal Climate Outlook
- Water Supply Projection

Current Water Supply



Gross Water Production



Current Reservoir Storage

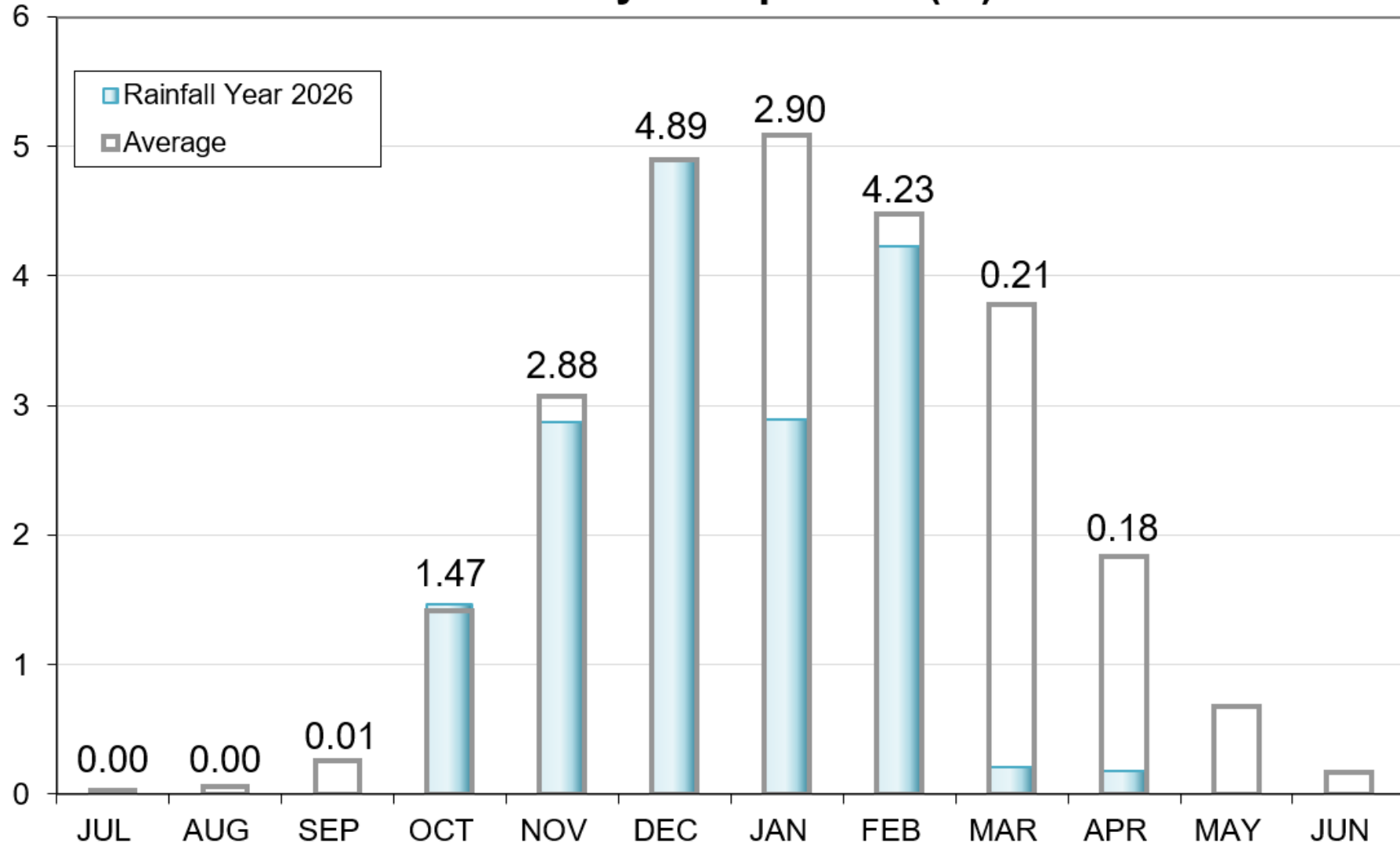
As of 4/8/2026	Current Storage	Percent of Average	Percent of Capacity
Pardee	190,010 AF	101%	93%
Camanche	339,970 AF	113%	82%
East Bay	137,040 AF	99%	91%
Total System	667,020 AF	106%	86%

AF: Acre-Feet

Precipitation as of April 8

East Bay: 16.8"
(69% of average)

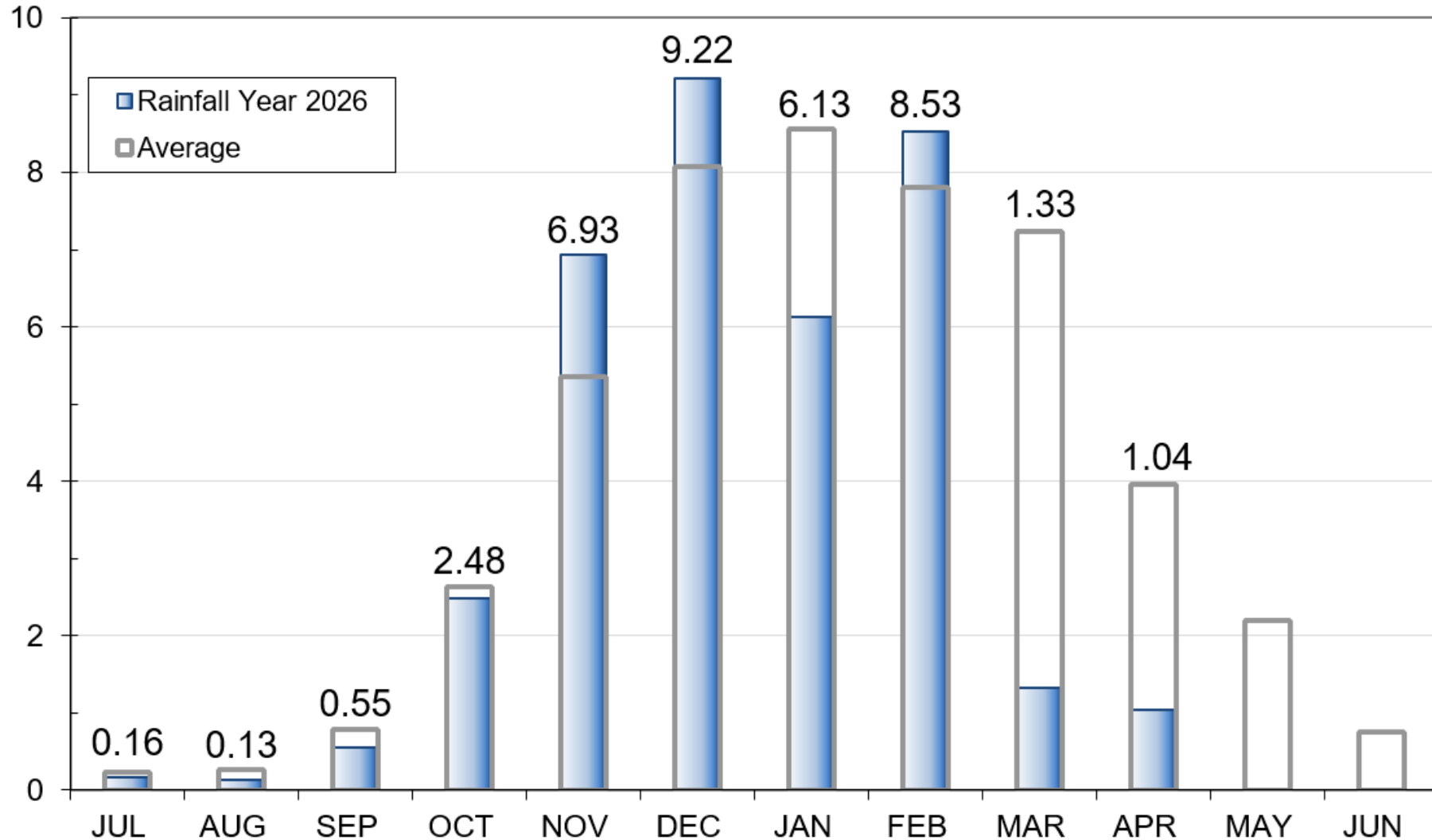
East Bay Precipitation (in)



Precipitation as of April 8

Mokelumne 4-Station Average Precipitation (in)

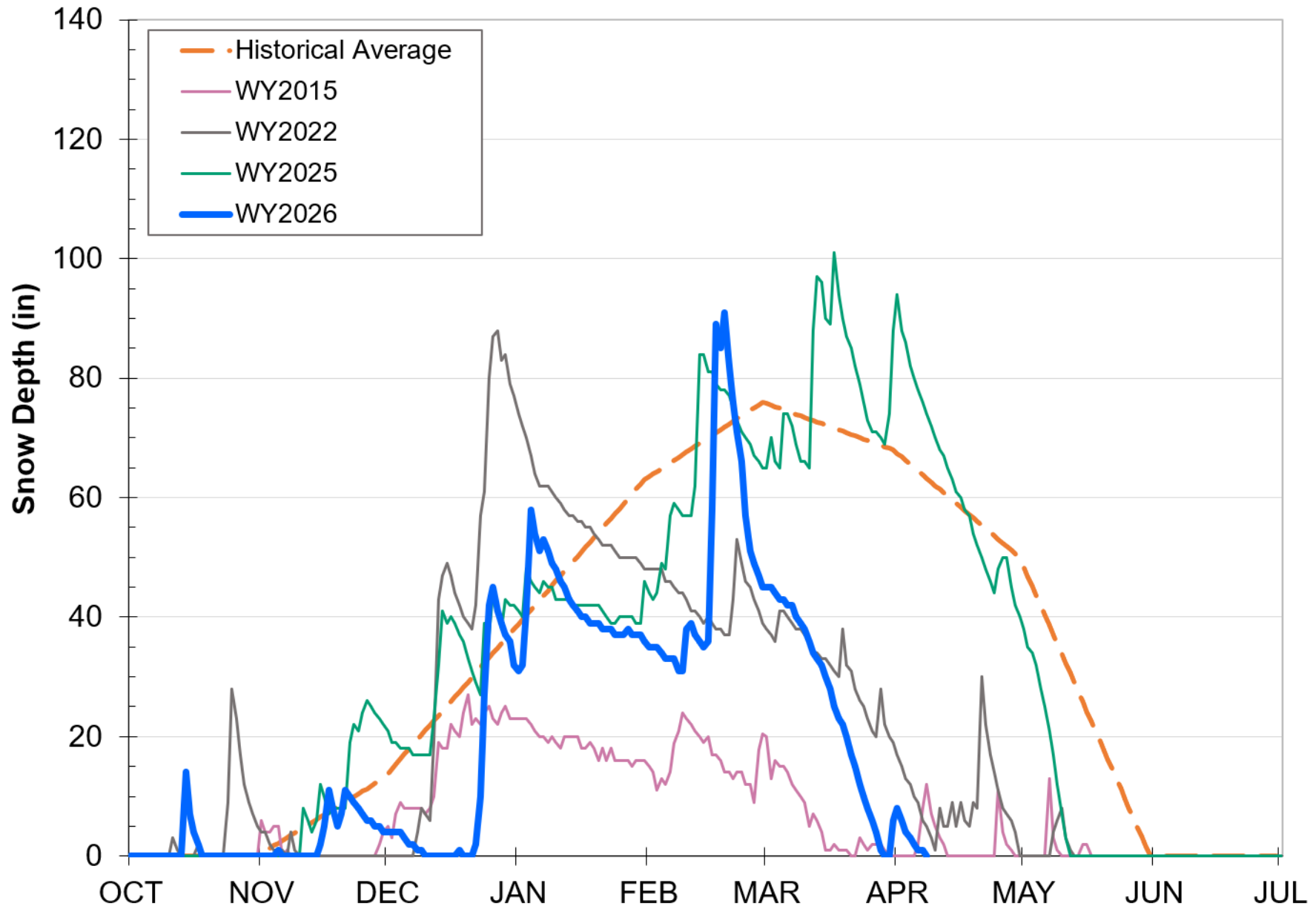
Mokelumne: 36.5"
(87% of average)



Caples Lake Snow as of April 8

Snow Depth – 0.0”
(0% of average)

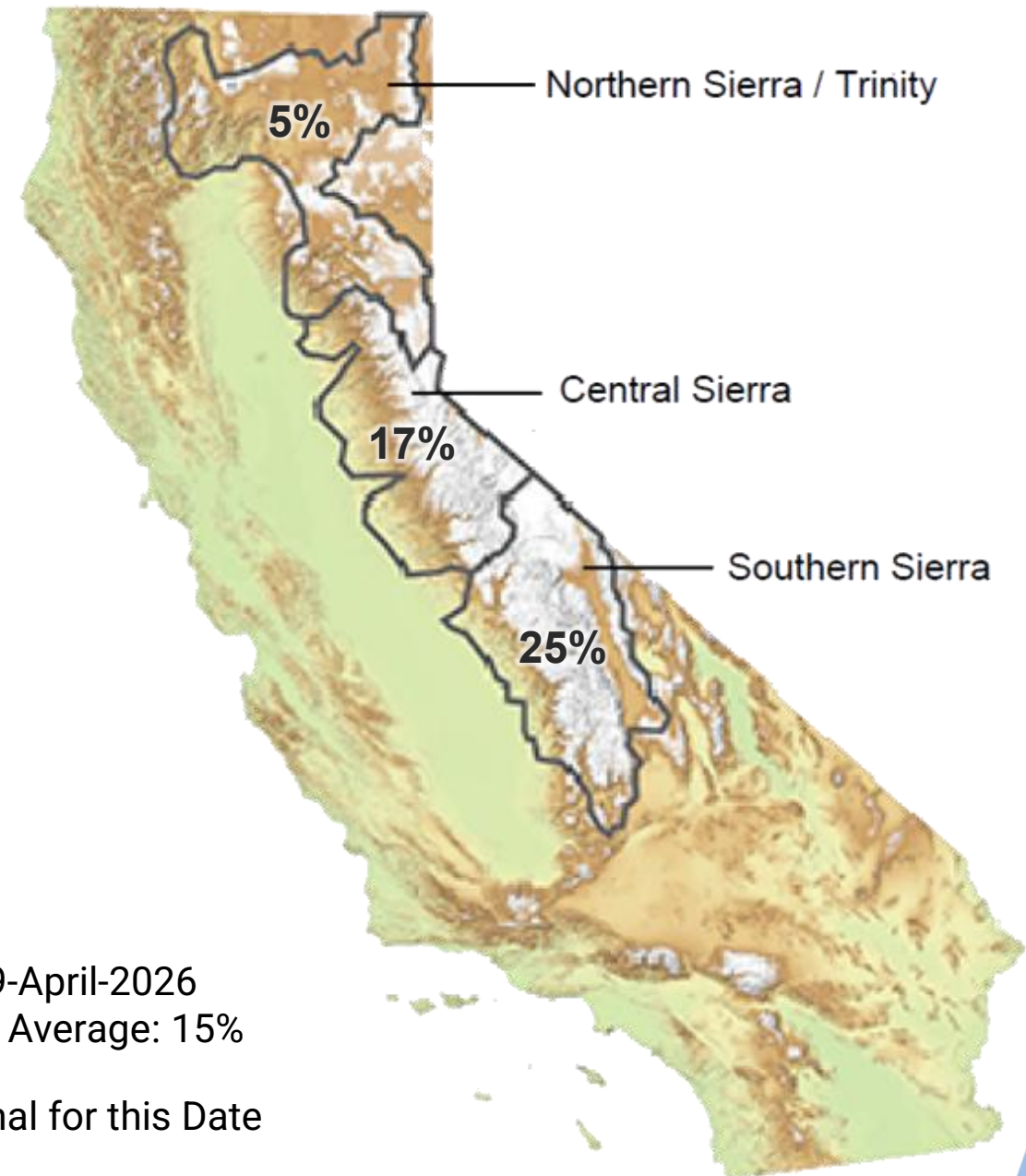
Snow Water
Content – 0.0”
(0% of average)





Snowpack as of April 9

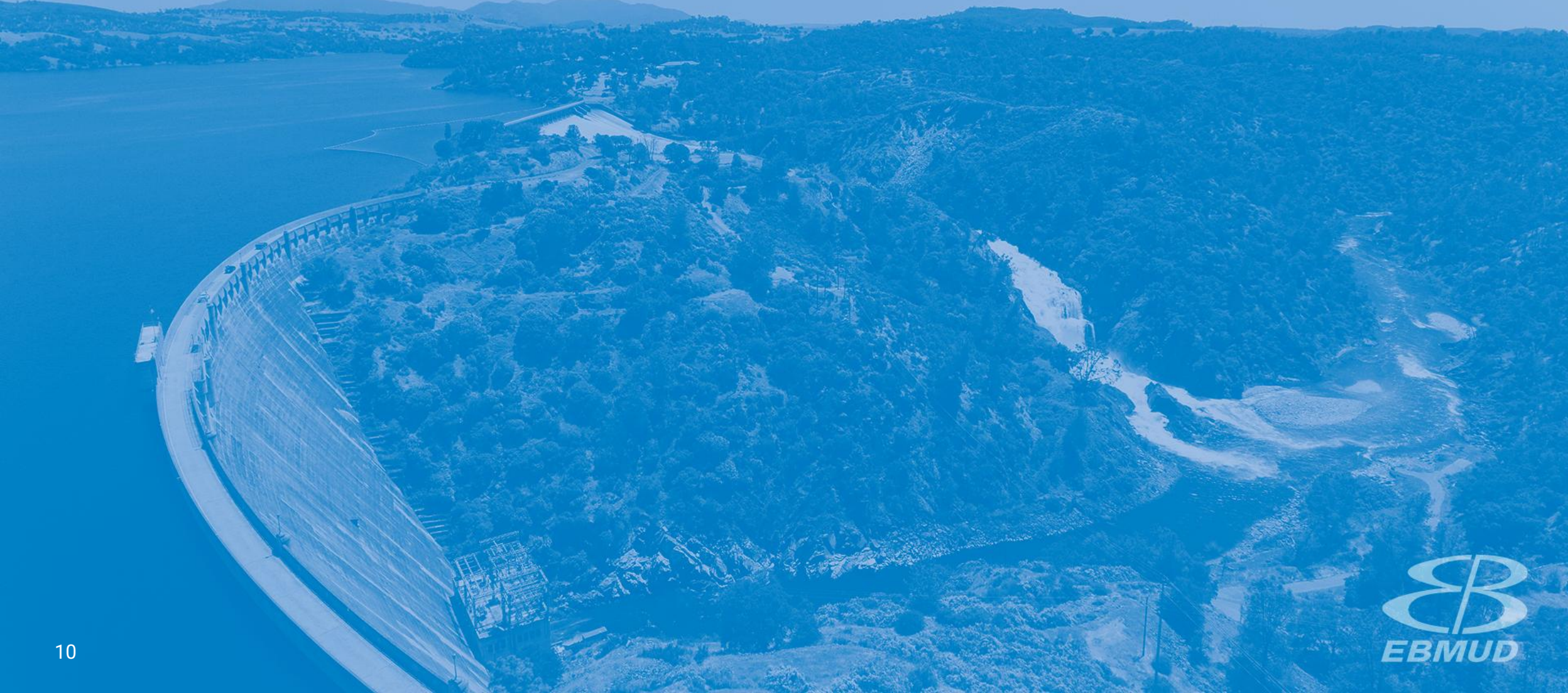
Snow Water Equivalent:
17% of Normal in Central Sierra



Data for: 9-April-2026
Statewide Average: 15%

% of Normal for this Date

Seasonal Climate Outlook



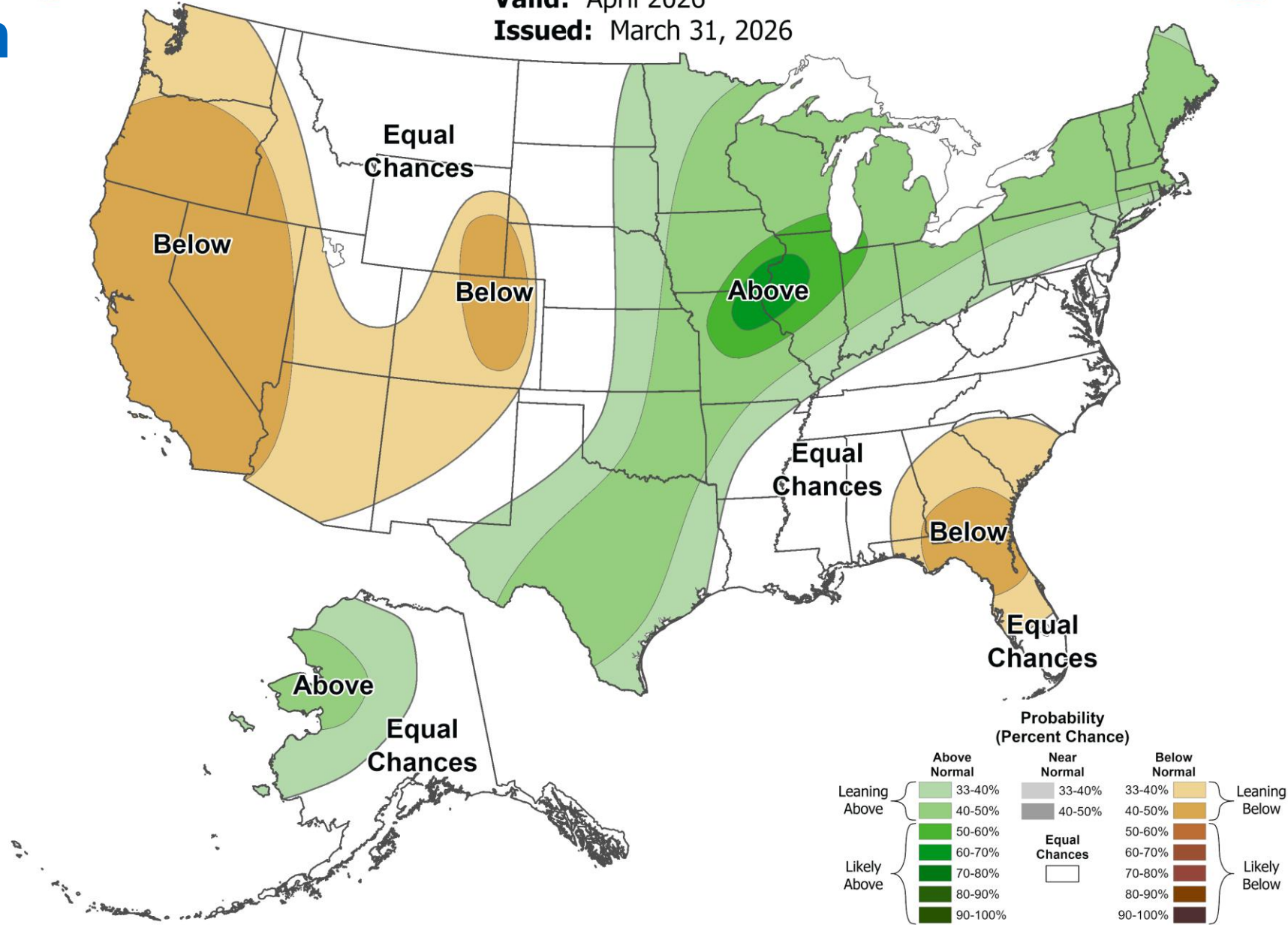
Seasonal Precipitation Outlook



Monthly Precipitation Outlook



Valid: April 2026
Issued: March 31, 2026

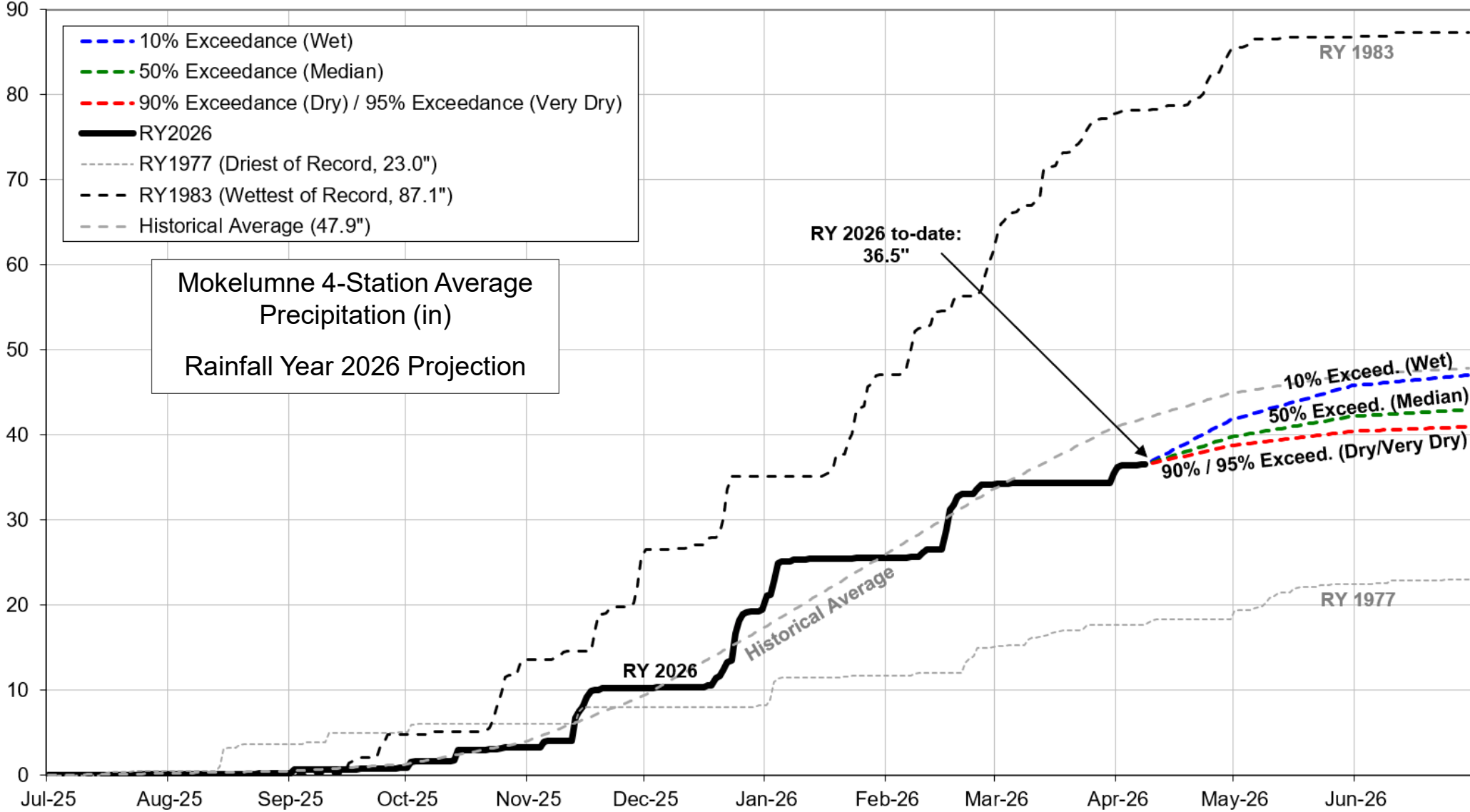


Water Supply Projection



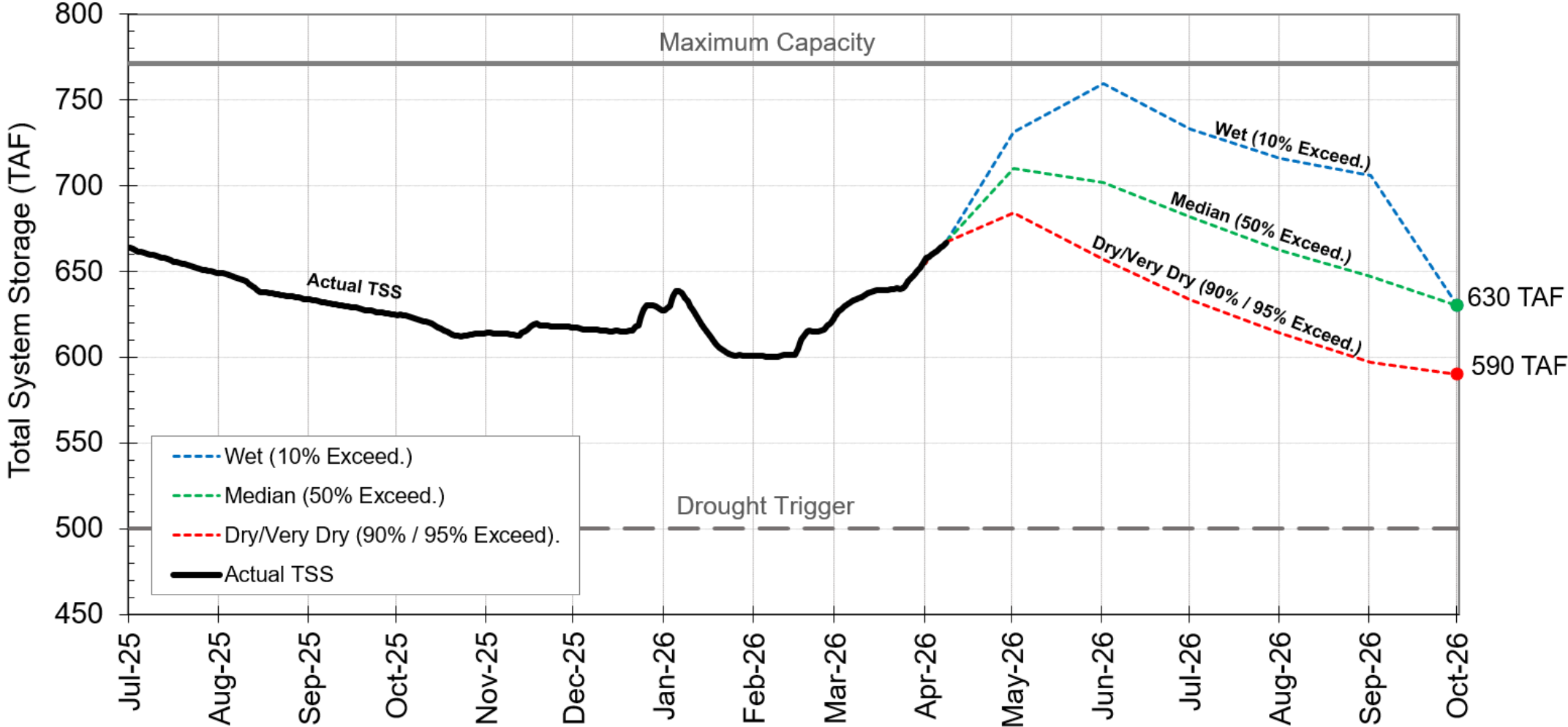
Projected Precipitation

Mokelumne Precipitation Rainfall Year 2026



End of Season Storage

2026 Total System Storage Projections





Questions?



WATER SUPPLY ENGINEERING DAILY REPORT

Wednesday, April 8, 2026

RESERVOIR STORAGE AND ELEVATION

	<u>WATER SURFACE</u>		<u>STORAGE</u>		<u>MAXIMUM CAPACITY</u>		Release	Spill
	Elevation	+Gain	+Gain	Elevation	Storage	Release		
	<u>Feet</u>	<u>-Loss</u>	<u>Ac-Ft</u>	<u>-Loss</u>	<u>Feet</u>	<u>Ac-Ft</u>	<u>Cfs</u>	<u>Cfs</u>
<u>MOKELUMNE</u>								
Pardee	561.33	0.12	190010	250	567.65	203795	1322	0
Camanche	224.7	0.27	339970	1830	235.5	417120	300	0
<u>EAST BAY</u>								
Briones	571.95	0.06	56050	40	576.14	58960	0	0
Chabot	225.18	-0.01	9530	0	227.25	10178	0	0
Lafayette	437.02	-0.01	2830	-10	449.16	4250	0	0
San Pablo	307.79	-0.05	33160	-40	313.68	37915	0	0
Upper San Leandro	455.38	0	<u>35470</u>	<u>0</u>	459.98	<u>38905</u>	0	0
<u>Total East Bay Res.</u>			<u>137040</u>	<u>-10</u>		<u>150208</u>		
TOTAL SYSTEM STORAGE			667020	2070		771123		

DISTRIBUTION SYSTEM		
<u>DISTRIBUTION RESERVOIRS</u>		
	Storage	Operating
	<u>MG</u>	<u>Capacity</u>
Today	404	720
Total Previous Day	<u>411</u>	
Total Change	-7	
<u>WATER PRODUCTION AND DEMAND</u>		
	Million Gallons	Capacity MGD
Lafayette WTP	14.1	25
Orinda WTP	88	190
San Pablo WTP	0	30
Sobrante WTP	16.5	50
Upper San Leandro WTP	0	45
Walnut Creek WTP	34.8	90
<u>TOTAL SURFACE PRODUCTION</u>	153.4	430
Miscellaneous(Estimated)	0.4	
<u>TOTAL WATER PRODUCTION</u>	<u>153.8</u>	
Change in Distribution System	-7	
Wash Water from Distribution Sys.	1.1	
<u>SYSTEM DEMAND</u>		
East-of-Hills Demand	45.3	
West-of-Hills Demand	113.9	

MOKELUMNE SYSTEM		
<u>AQUEDUCT DELIVERIES</u>		
	<u>MG</u>	<u>Flow Conditions</u>
Line 1	37.4	GRAVITY
Line 2	48.9	GRAVITY
Line 3	<u>66.9</u>	<u>THROTTLE</u>
TOTAL	153.2	237 Cfs
<u>FSCC to MOK AQUEDUCTS (Measured at Brandt), MG</u>		
Mok 1	0	
Mok 2	<u>0</u>	
	0 MG	
<u>RIVER FLOWS AND RELEASES</u>		
		<u>Cfs</u>
Mokelumne River Natural Flow		1479
Pardee Reservoir Inflow		1706
Pardee Release to Camanche Res.		1322
Pardee Release to JVID		0
Camanche Release to Mokel. River		300
<u>PG&E CO. STORAGE (Acre-feet)</u>		
	<u>Storage</u>	<u>Change</u>
		<u>Capacity</u>
Old Reservoirs	21093	77
Salt Springs Res.	135095	94
Lower Bear Res.	<u>49508</u>	<u>-621</u>
Total	205696	-450

	<u>RAW WATER TRANSMISSION</u>	
	<u>Ac-ft INPUT</u>	<u>Ac-ft DRAFT</u>
Briones Res.	50	0
San Pablo Res.	0	48
U. San Leandro Res.	0	0
TOTAL	50	48

<u>STATION</u>	<u>PRECIPITATION (Inches)</u>			
	<u>THIS YEAR</u>		<u>AVERAGE YEAR</u>	
	<u>Today</u>	<u>Month</u>	<u>to-Date</u>	<u>Season</u>
USL WTP	0	0.13	16.36	23
Orinda WTP	0	0.63	24.28	29.2
Lafayette Reservoir	0	0.23	17.15	25.76
Walnut Creek WTP	0	0.37	17.47	21.29
Camp Pardee	0	0.35	18.14	18.99
Salt Springs P.H.	0.01	1.32	37.08	39.46

REMARKS
 WID Canal Diversion = 94 cfs
 Mokelumne River below WID = 163 cfs

<u>CAPLES LAKE (7,830 FT) DATA</u>			
	<u>Today</u>	<u>Average</u>	
Snow Depth	0 Inches	63 Inches	
Water Content	0.0 Inches	27.1 Inches	

PG&E data as of 4:00 pm previous date.
 All other data as of midnight.
 WTP capacities are sustainable rates.