



Water Supply Update

Board of Directors

March 24, 2026

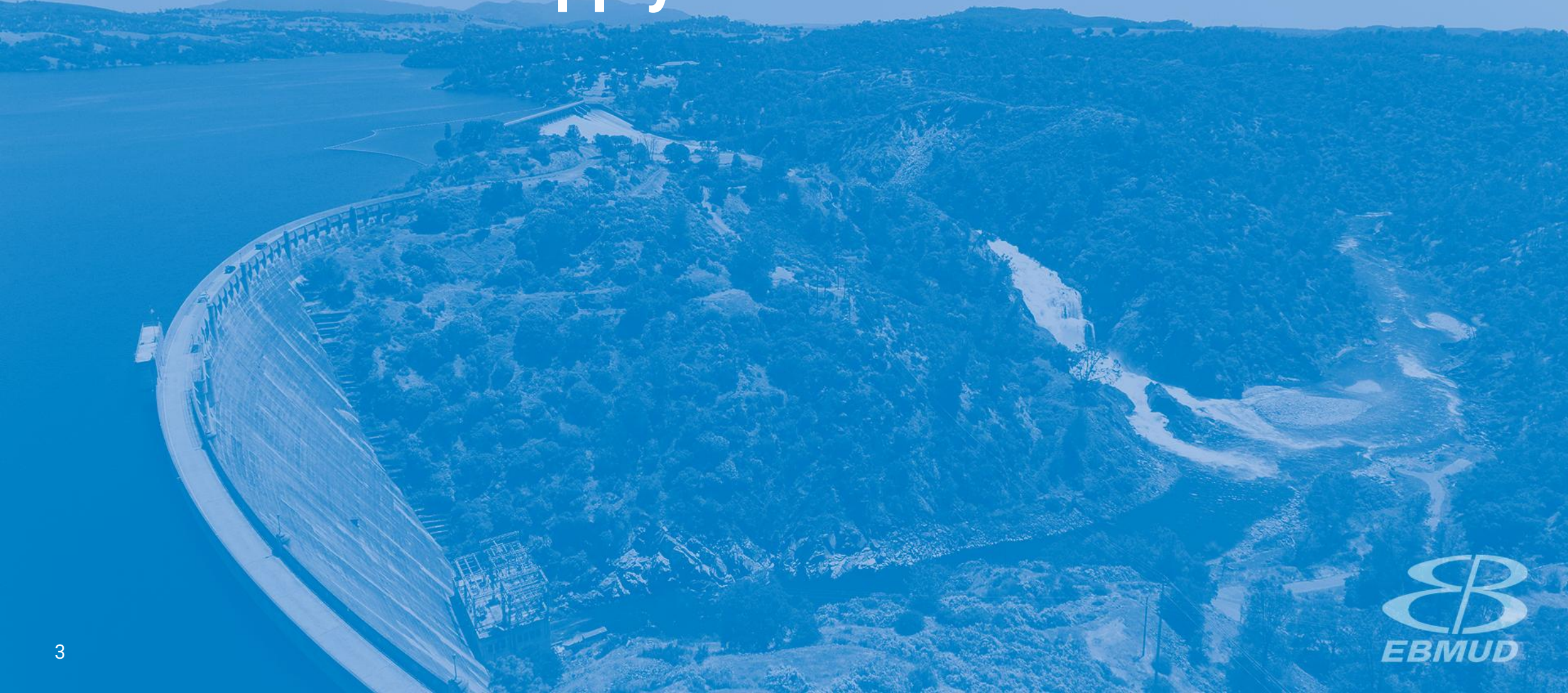
Roberto C. Cortez, Manager of Water Operations



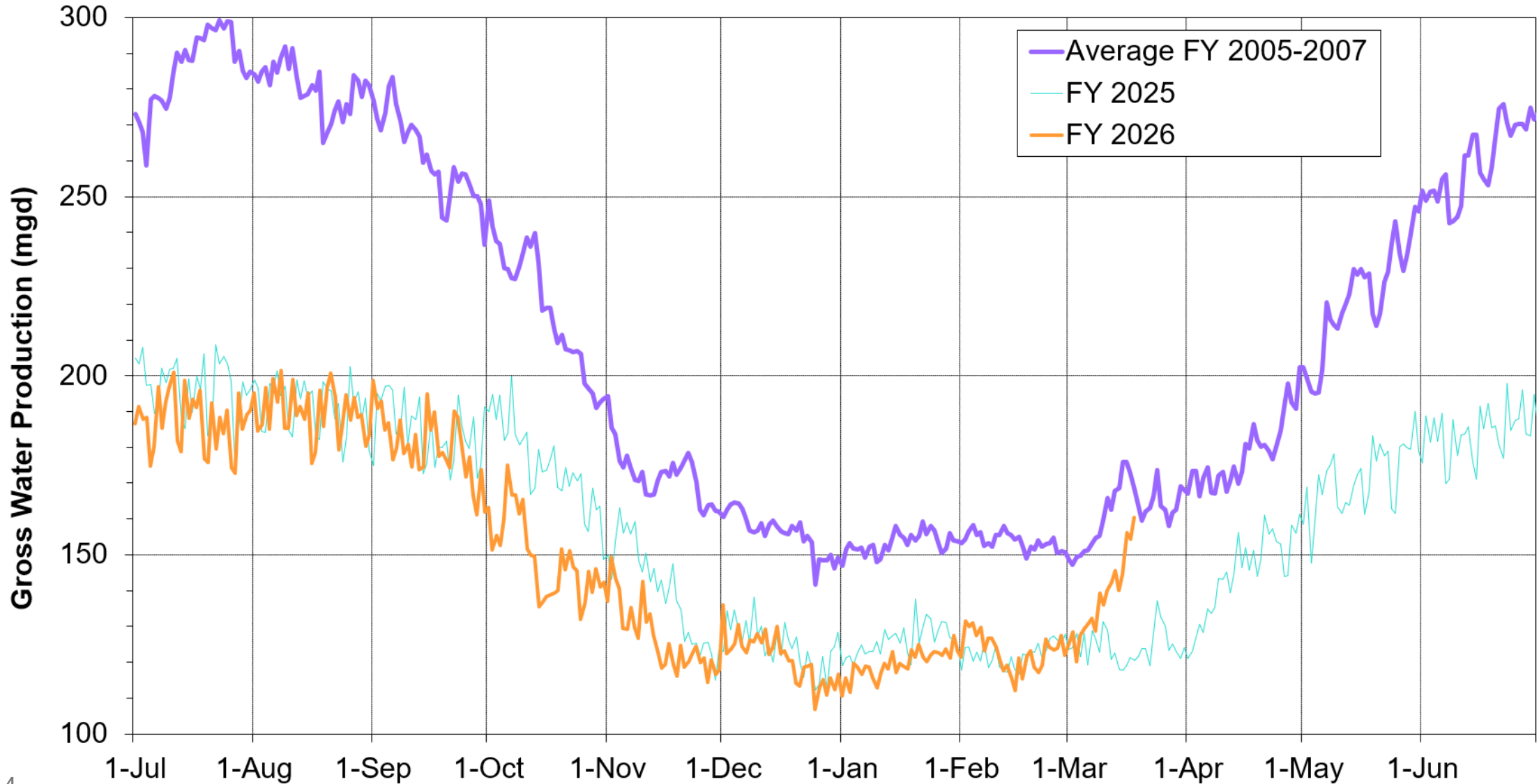
Briefing Topics

- Current Water Supply
- Seasonal Climate Outlook
- Water Supply Projection

Current Water Supply



Gross Water Production



Current Reservoir Storage

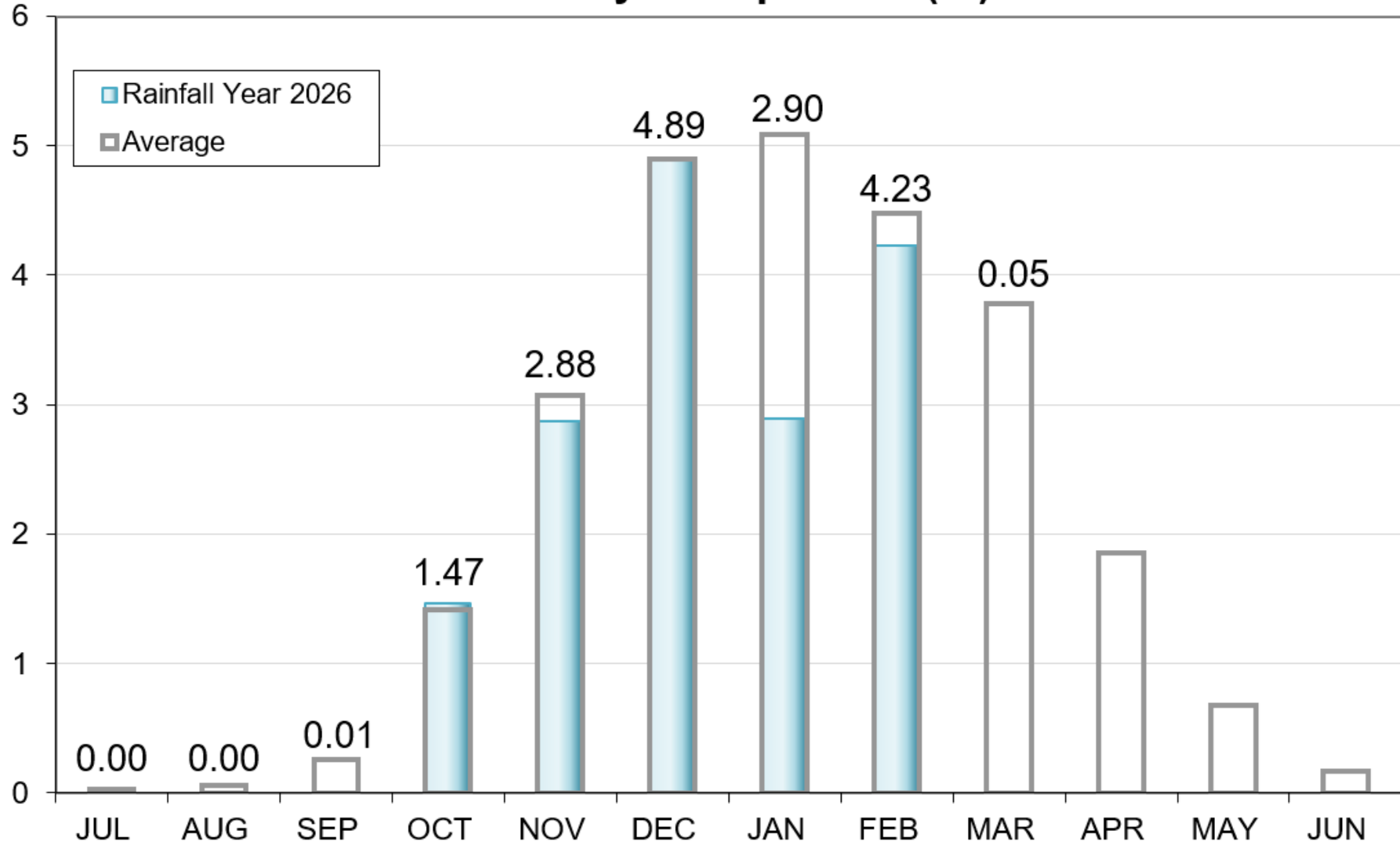
As of 3/18/2026	Current Storage	Percent of Average	Percent of Capacity
Pardee	182,990 AF	99%	90%
Camanche	318,950 AF	110%	76%
East Bay	137,430 AF	101%	91%
Total System	639,370 AF	105%	83%

AF: Acre-Feet

Precipitation as of March 18

East Bay: 16.4"
(74% of average)

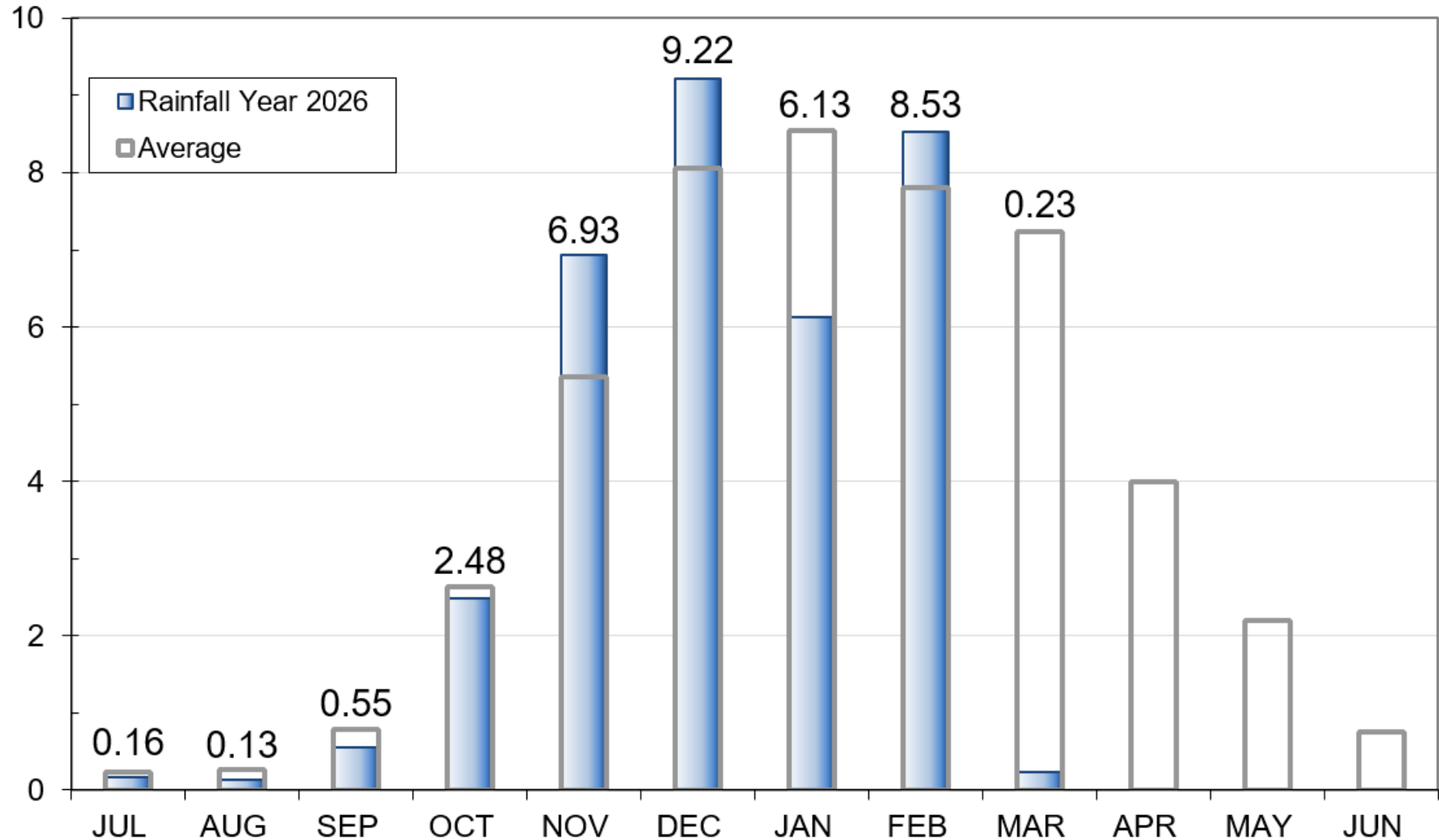
East Bay Precipitation (in)



Precipitation as of March 18

Mokelumne: 34.4"
(90% of average)

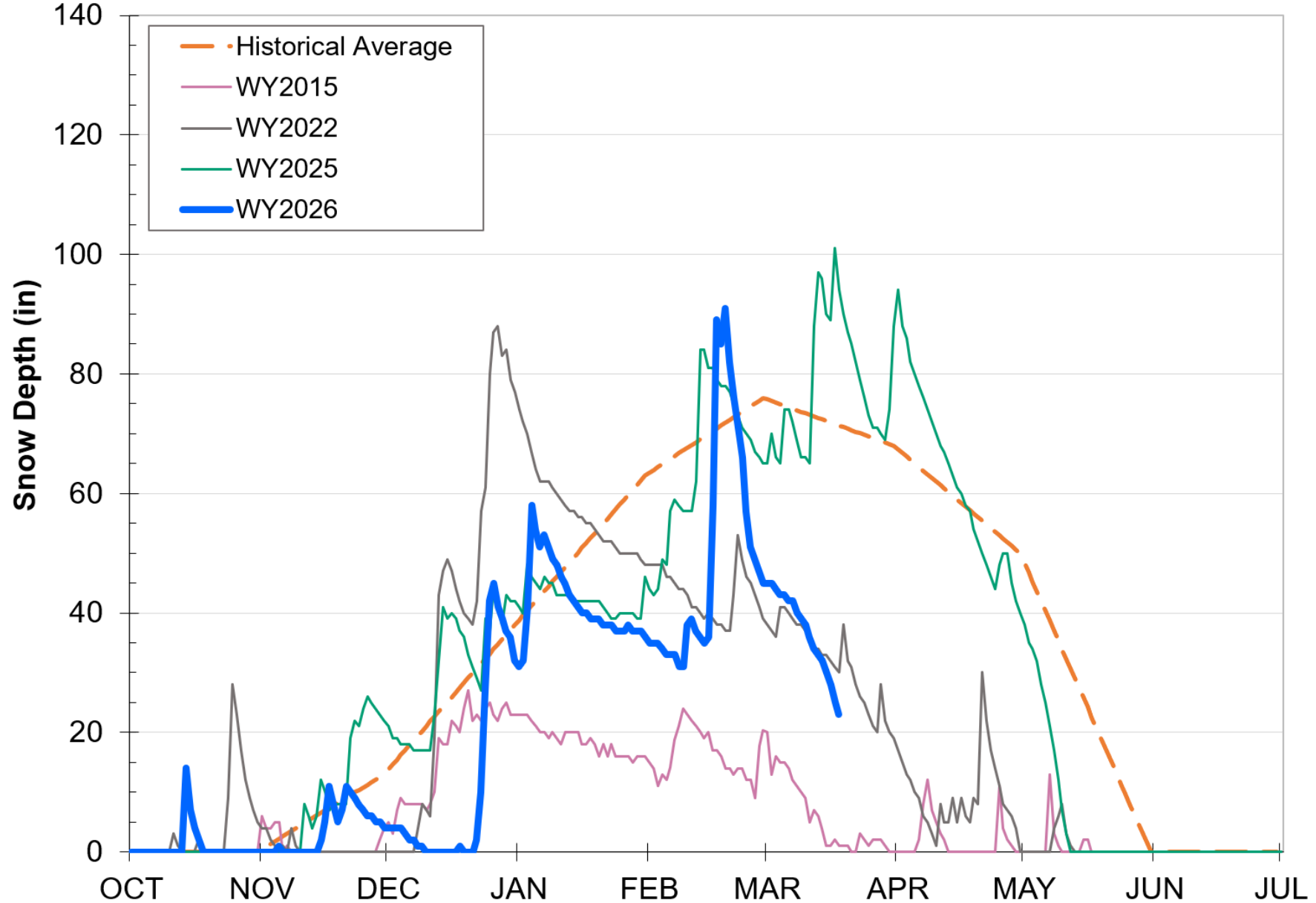
Mokelumne 4-Station Average Precipitation (in)



Caples Lake Snow as of March 18

Snow Depth – 23.0”
(32% of average)

Snow Water
Content – 7.0”
(25% of average)





Snowpack as of March 19

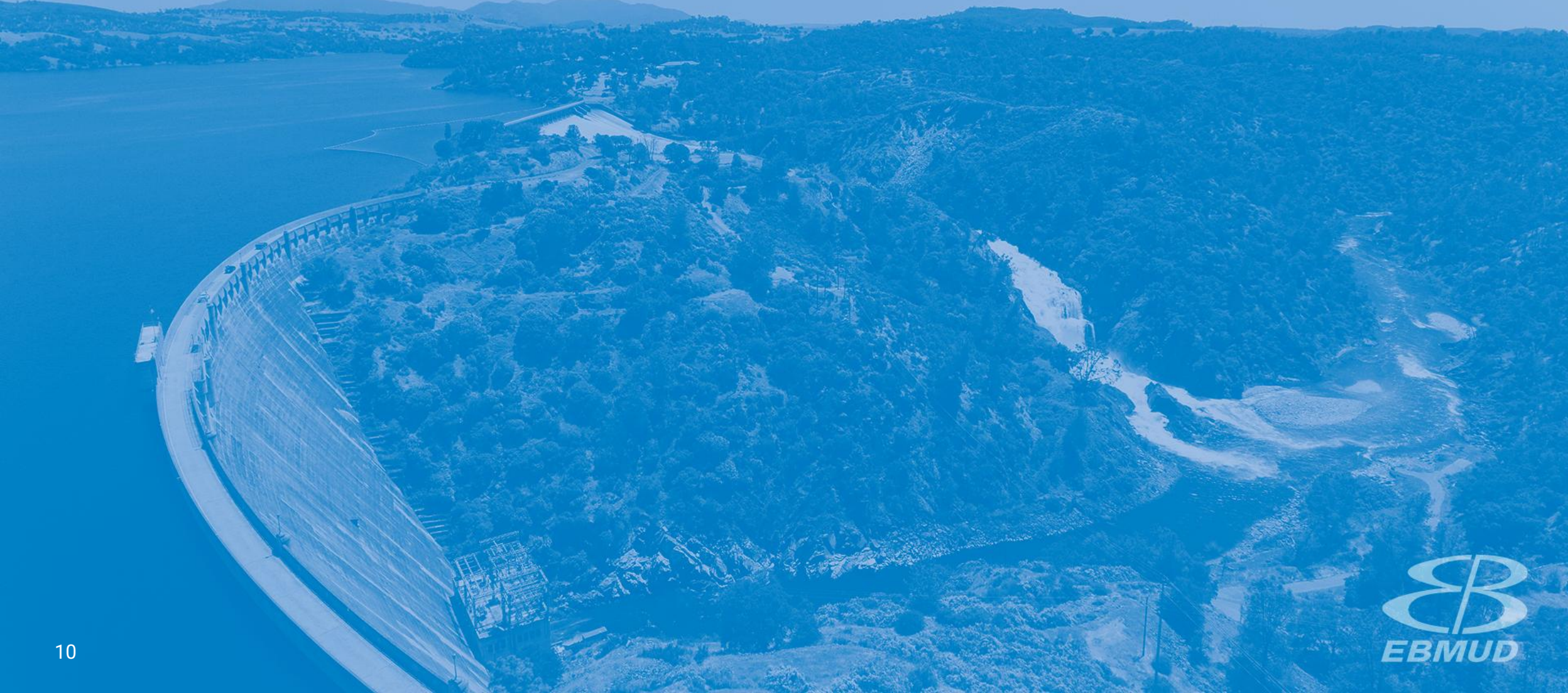
Snow Water Equivalent:
41% of Normal in Central Sierra



Data for: 19-March-2026
Statewide Average: 38%

% of Normal for this Date

Seasonal Climate Outlook

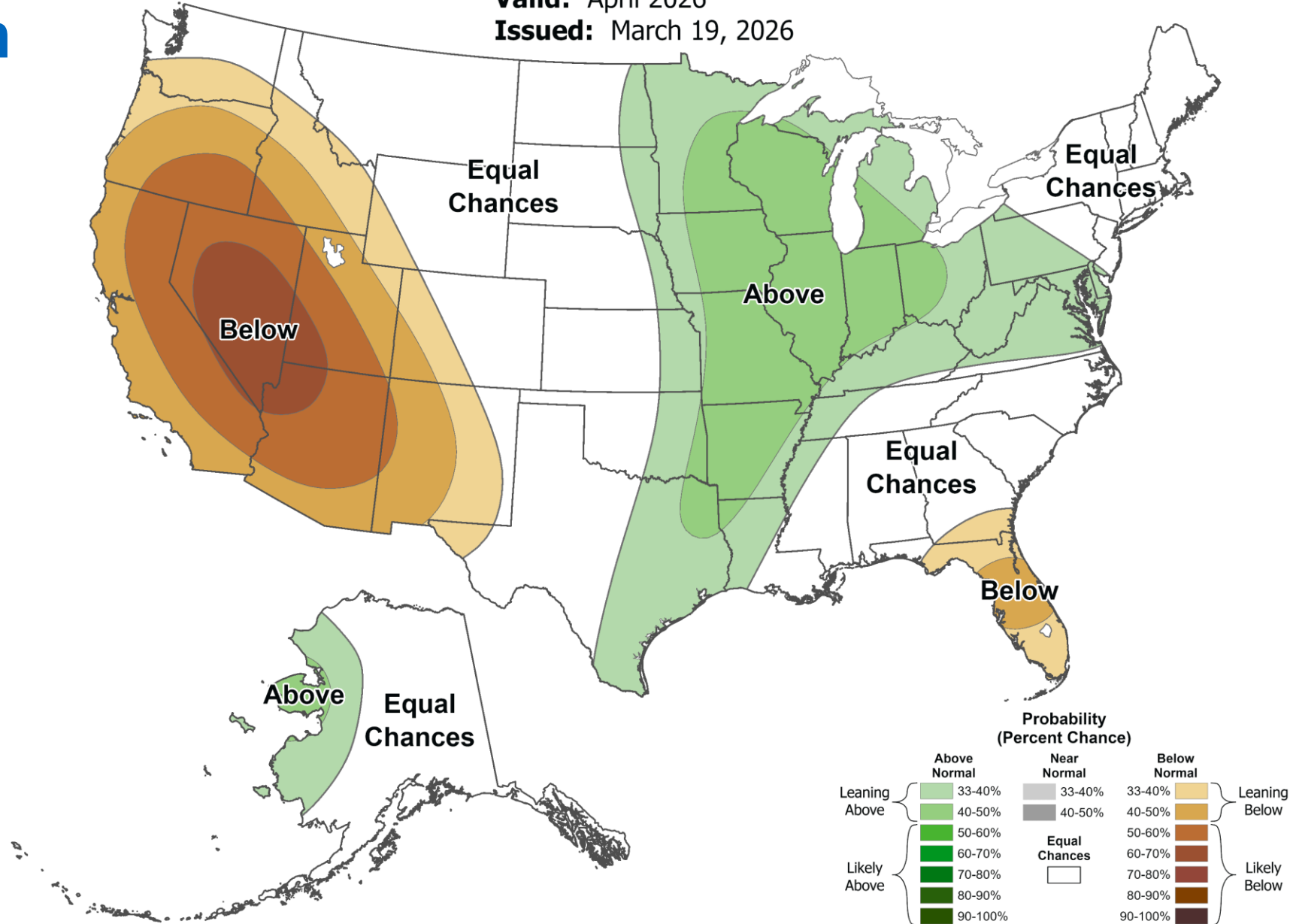


Seasonal Precipitation Outlook



Monthly Precipitation Outlook

Valid: April 2026
 Issued: March 19, 2026

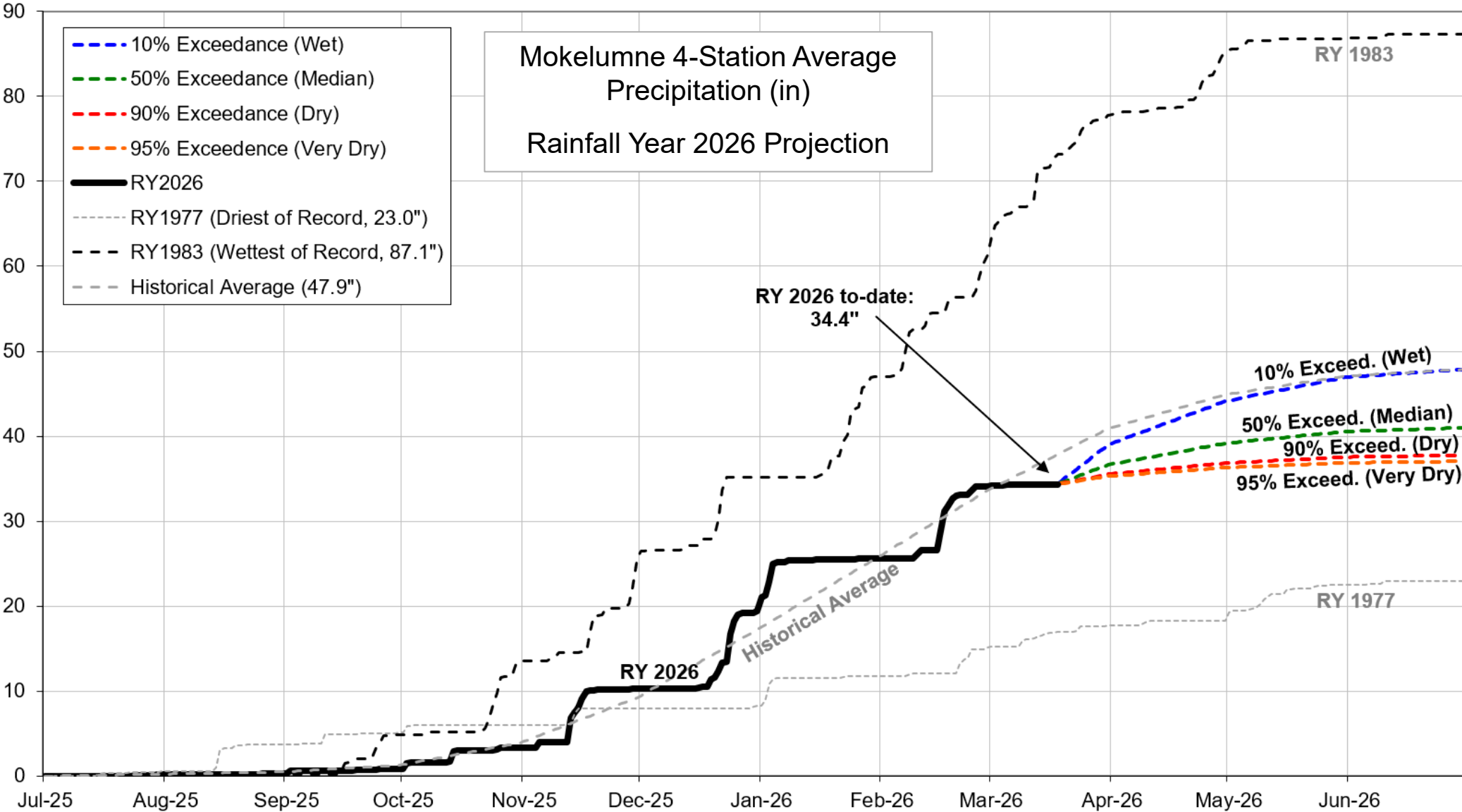


Water Supply Projection



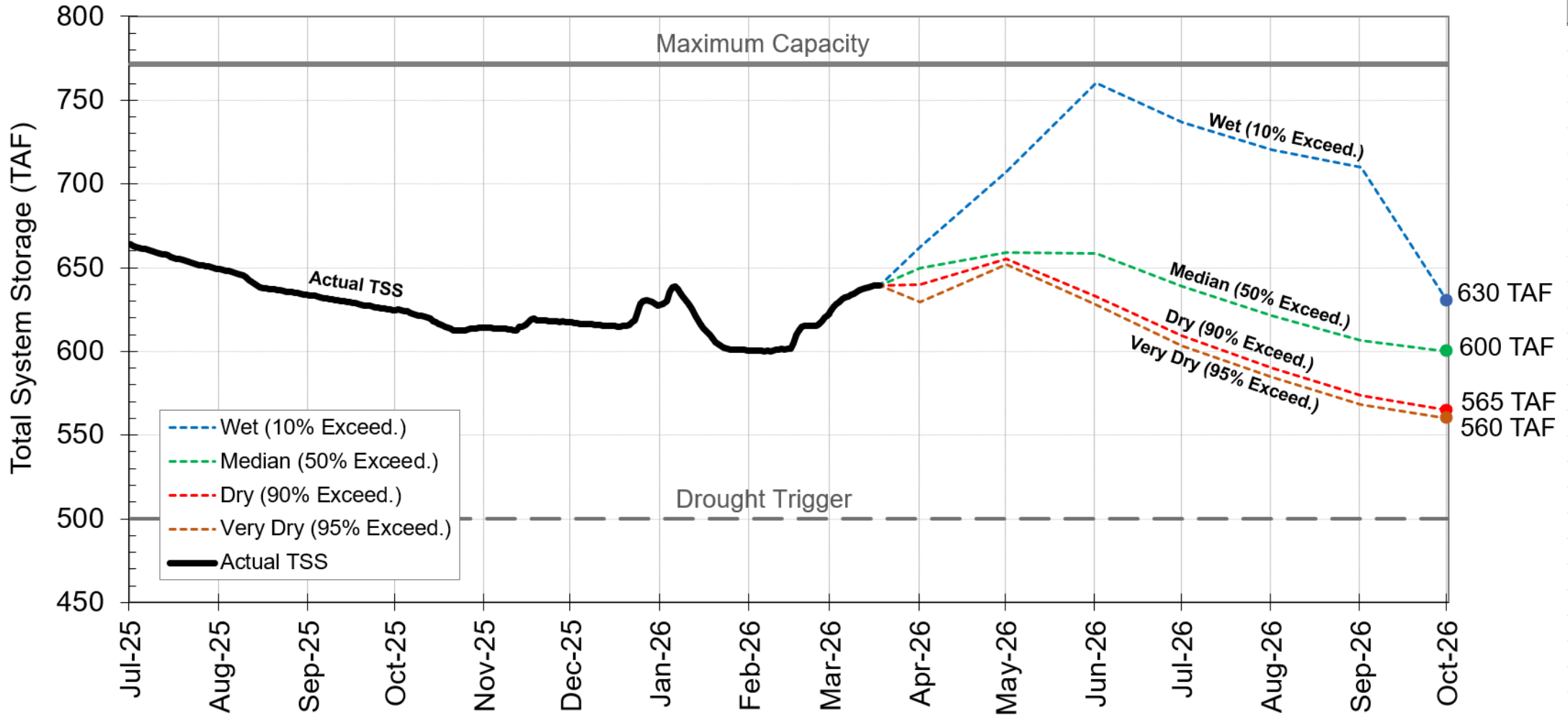
Projected Precipitation

Mokelumne Precipitation Rainfall Year 2026



End of Season Storage

2026 Total System Storage Projections



TAF: Thousands of Acre-Feet





Questions?



WATER SUPPLY ENGINEERING DAILY REPORT

Wednesday, March 18, 2026

RESERVOIR STORAGE AND ELEVATION

	<u>WATER SURFACE</u>		<u>STORAGE</u>		<u>MAXIMUM CAPACITY</u>		Release	Spill
	Elevation	+Gain	+Gain	Elevation	Storage			
	<u>Feet</u>	<u>-Loss</u>	<u>Ac-Ft</u>	<u>-Loss</u>	<u>Feet</u>	<u>Ac-Ft</u>	<u>Cfs</u>	<u>Cfs</u>
<u>MOKELUMNE</u>								
Pardee	558	-0.86	182990	-1800	567.65	203795	1428	0
Camanche	221.56	0.3	318950	1980	235.5	417120	300	0
<u>EAST BAY</u>								
Briones	573.01	-0.14	56780	-100	576.14	58960	0	0
Chabot	225.31	-0.01	9570	0	227.25	10350	0	0
Lafayette	437.19	-0.01	2850	0	449.16	4250	0	0
San Pablo	307.43	0.02	32880	10	313.68	37915	0	0
Upper San Leandro	455.22	0.02	<u>35350</u>	<u>10</u>	459.98	<u>38905</u>	0	0
<u>Total East Bay Res.</u>			<u>137430</u>	<u>-80</u>		<u>150380</u>		
TOTAL SYSTEM STORAGE			639370	100		771295		

DISTRIBUTION SYSTEM		
<u>DISTRIBUTION RESERVOIRS</u>		
	Storage	Operating
	<u>MG</u>	<u>Capacity</u>
Today	368	720
Total Previous Day	<u>368</u>	
Total Change	0	
<u>WATER PRODUCTION AND DEMAND</u>		
	Million	Capacity
	<u>Gallons</u>	<u>MGD</u>
Lafayette WTP	12.3	25
Orinda WTP	107	190
San Pablo WTP	0	30
Sobrante WTP	0	50
Upper San Leandro WTP	0	45
Walnut Creek WTP	41.6	90
<u>TOTAL SURFACE PRODUCTION</u>	160.9	430
Miscellaneous(Estimated)	0.4	
<u>TOTAL WATER PRODUCTION</u>	<u>161.3</u>	
Change in Distribution System	0	
Wash Water from Distribution Sys.	0.4	
<u>SYSTEM DEMAND</u>		
East-of-Hills Demand	45.2	
West-of-Hills Demand	115.3	

MOKELUMNE SYSTEM			
<u>AQUEDUCT DELIVERIES</u>			
	<u>MG</u>	<u>Flow Conditions</u>	
Line 1	39	GRAVITY	
Line 2	0	SHUTDOWN	
Line 3	<u>92.3</u>	<u>THROTTLE</u>	
TOTAL	131.3	203 Cfs	
<u>FSCC to MOK AQUEDUCTS (Measured at Brandt), MG</u>			
Mok 1	0		
Mok 2	<u>0</u>		
	0 MG		
<u>RIVER FLOWS AND RELEASES</u>			
		<u>Cfs</u>	
Mokelumne River Natural Flow		2962	
Pardee Reservoir Inflow		743	
Pardee Release to Camanche Res.		1428	
Pardee Release to JVID		0	
Camanche Release to Mokel. River		300	
<u>PG&E CO. STORAGE (Acre-feet)</u>			
	<u>Storage</u>	<u>Change</u>	<u>Maximum Capacity</u>
Old Reservoirs	18272	174	26560
Salt Springs Res.	113454	2939	141857
Lower Bear Res.	<u>37742</u>	<u>1289</u>	<u>52025</u>
Total	169468	4402	220442

	<u>RAW WATER TRANSMISSION</u>	
	<u>Ac-ft</u>	<u>Ac-ft</u>
	<u>INPUT</u>	<u>DRAFT</u>
Briones Res.	0	100
San Pablo Res.	9	0
U. San Leandro Res.	0	0
TOTAL	9	100

<u>STATION</u>	<u>PRECIPITATION (Inches)</u>				
	<u>THIS YEAR</u>		<u>AVERAGE YEAR</u>		
	<u>Today</u>	<u>Month</u>	<u>to-Date</u>	<u>to-Date</u>	<u>Total</u>
USL WTP	0	0.06	16.03	20.93	25.33
Orinda WTP	0	0.07	23.37	26.5	32.06
Lafayette Reservoir	0	0.04	16.8	23.48	28.18
Walnut Creek WTP	0	0.05	17.01	19.46	23.02
Camp Pardee	0	0	16.58	17	21.56
Salt Springs P.H.	0	0.18	34.44	35.58	45.51

REMARKS
 WID Canal Diversion = 40 cfs
 Mokelumne River below WID = 227 cfs

PG&E data as of 4:00 pm previous date.
 All other data as of midnight.
 WTP capacities are sustainable rates.

<u>CAPLES LAKE (7,830 FT) DATA</u>			
	<u>Today</u>	<u>Average</u>	
Snow Depth	23 Inches	71 Inches	
Water Content	7.0 Inches	27.6 Inches	