



Water Supply Update

Board of Directors

March 10, 2026

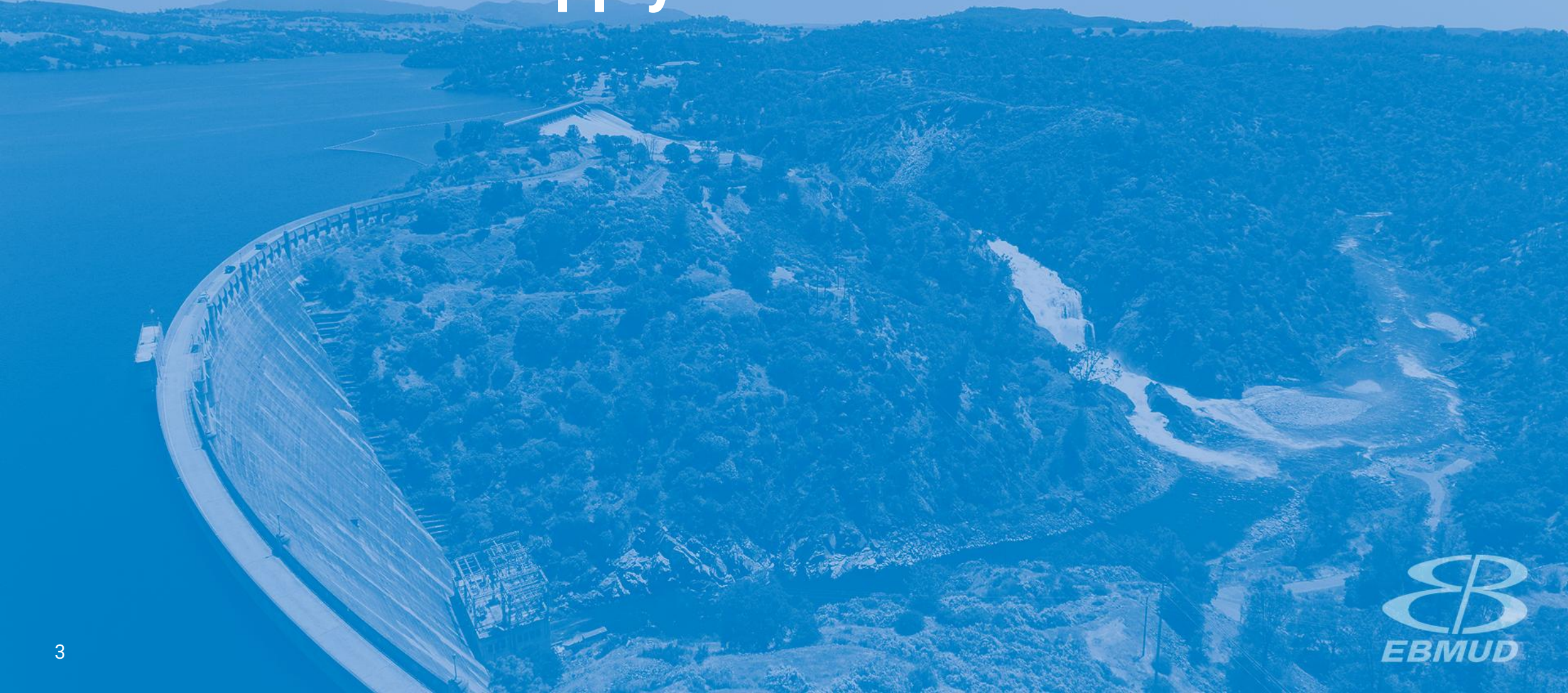
Roberto C. Cortez, Manager of Water Operations



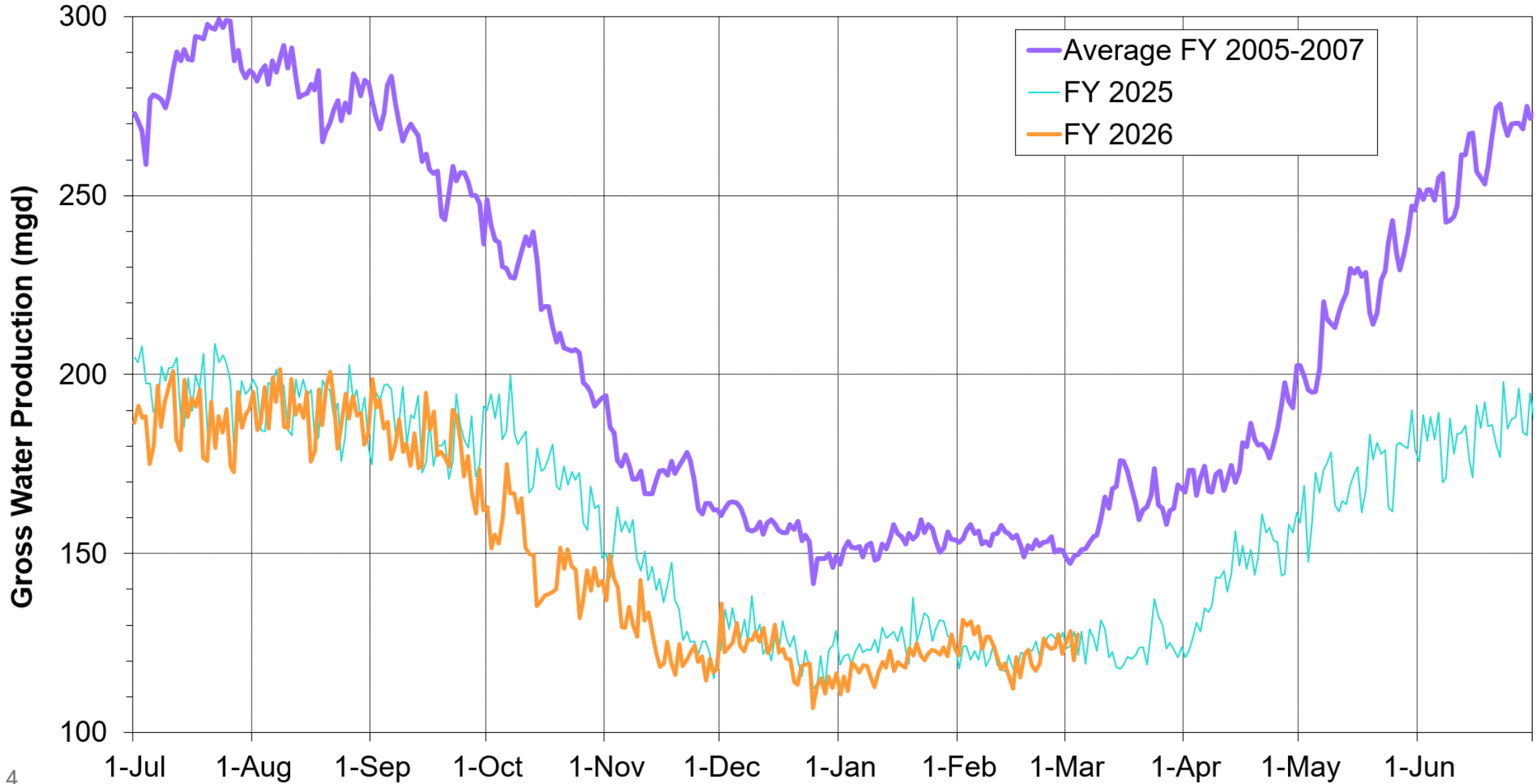
Briefing Topics

- Current Water Supply
- Seasonal Climate Outlook
- Water Supply Projection

Current Water Supply



Gross Water Production



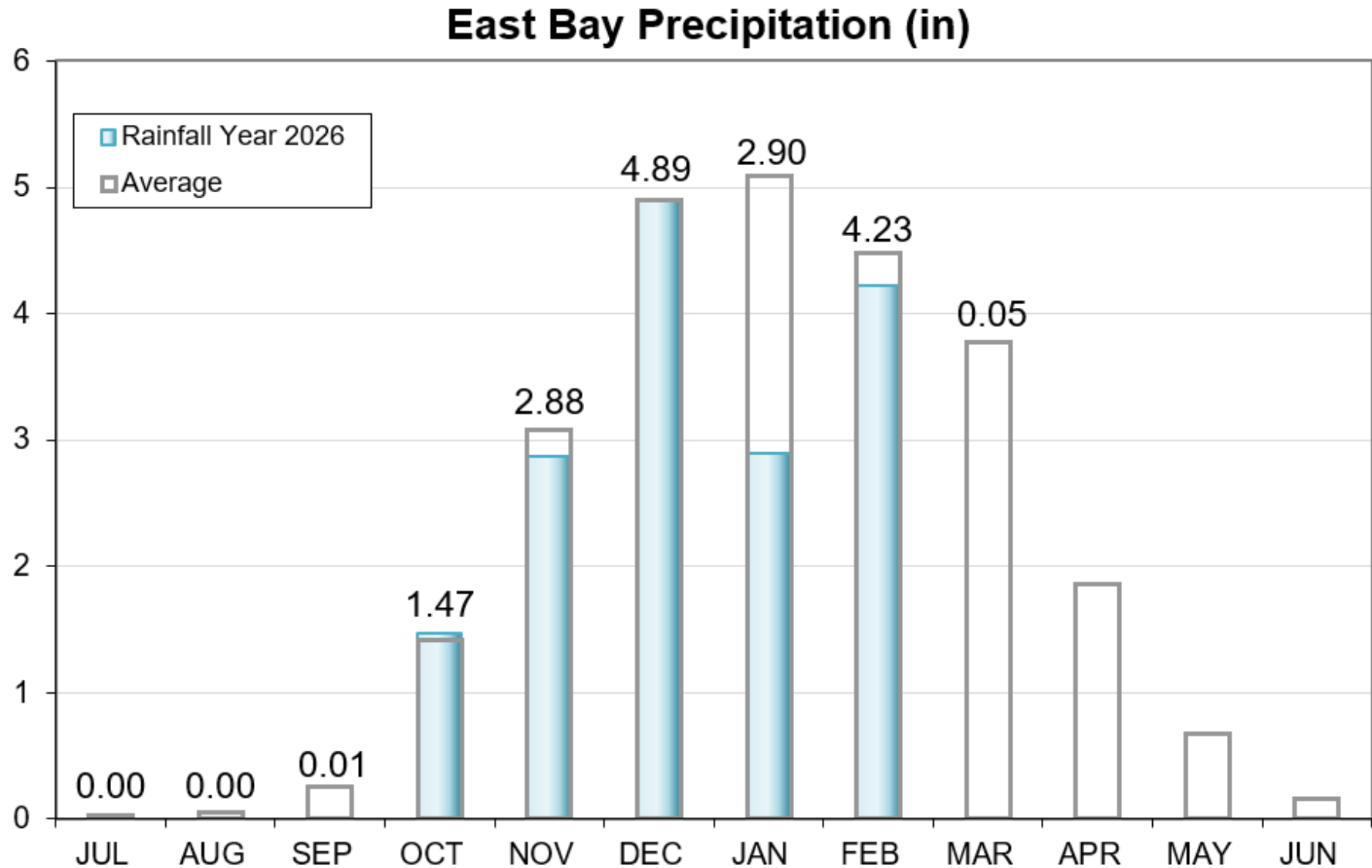
Current Reservoir Storage

As of 3/4/2026	Current Storage	Percent of Average	Percent of Capacity
Pardee	193,250 AF	105%	95%
Camanche	298,820 AF	108%	72%
East Bay	137,660 AF	103%	92%
Total System	629,730 AF	106%	82%

AF: Acre-Feet

Precipitation as of March 4

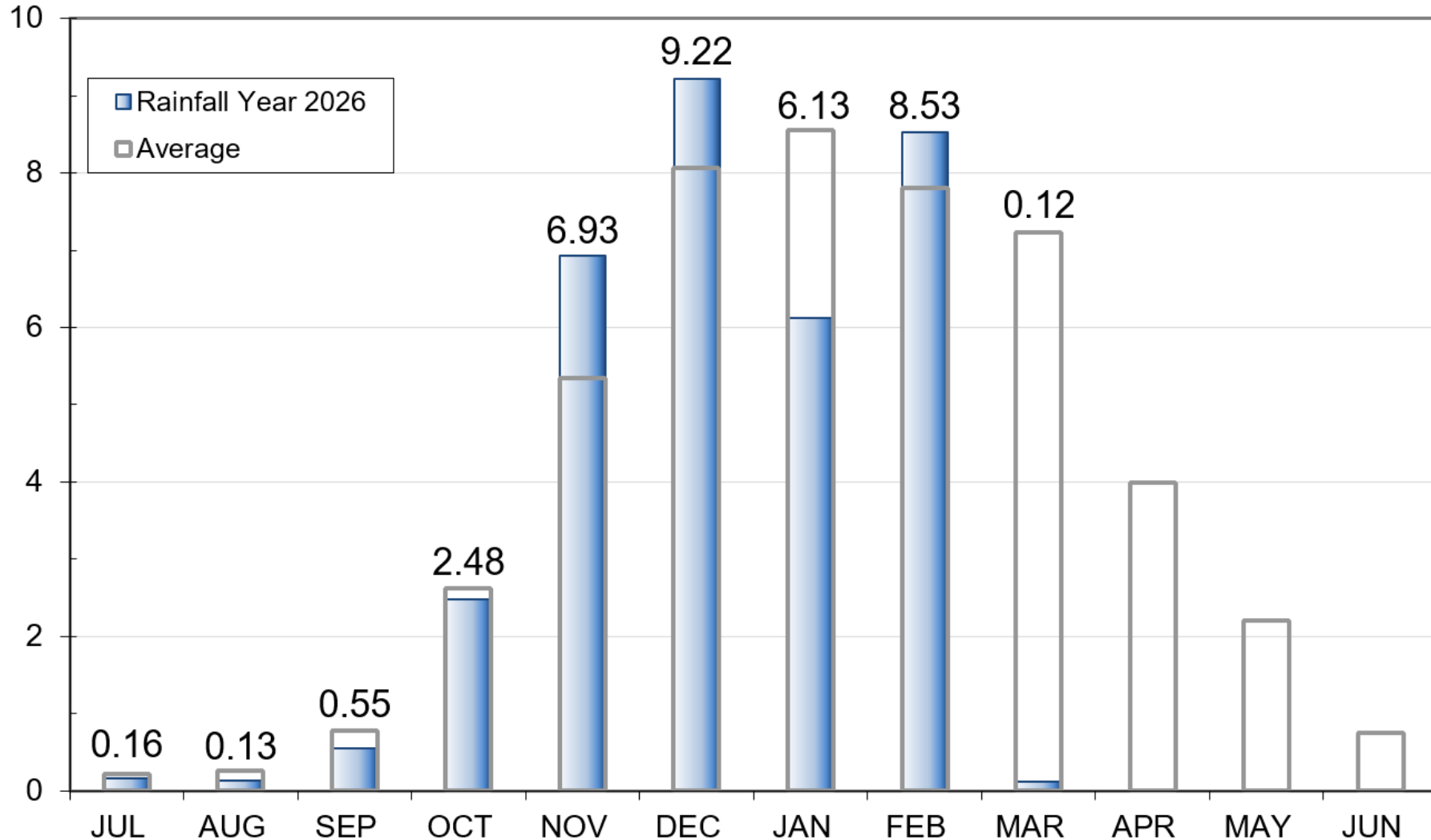
East Bay: 16.4"
(80% of average)



Precipitation as of March 4

Mokelumne 4-Station Average Precipitation (in)

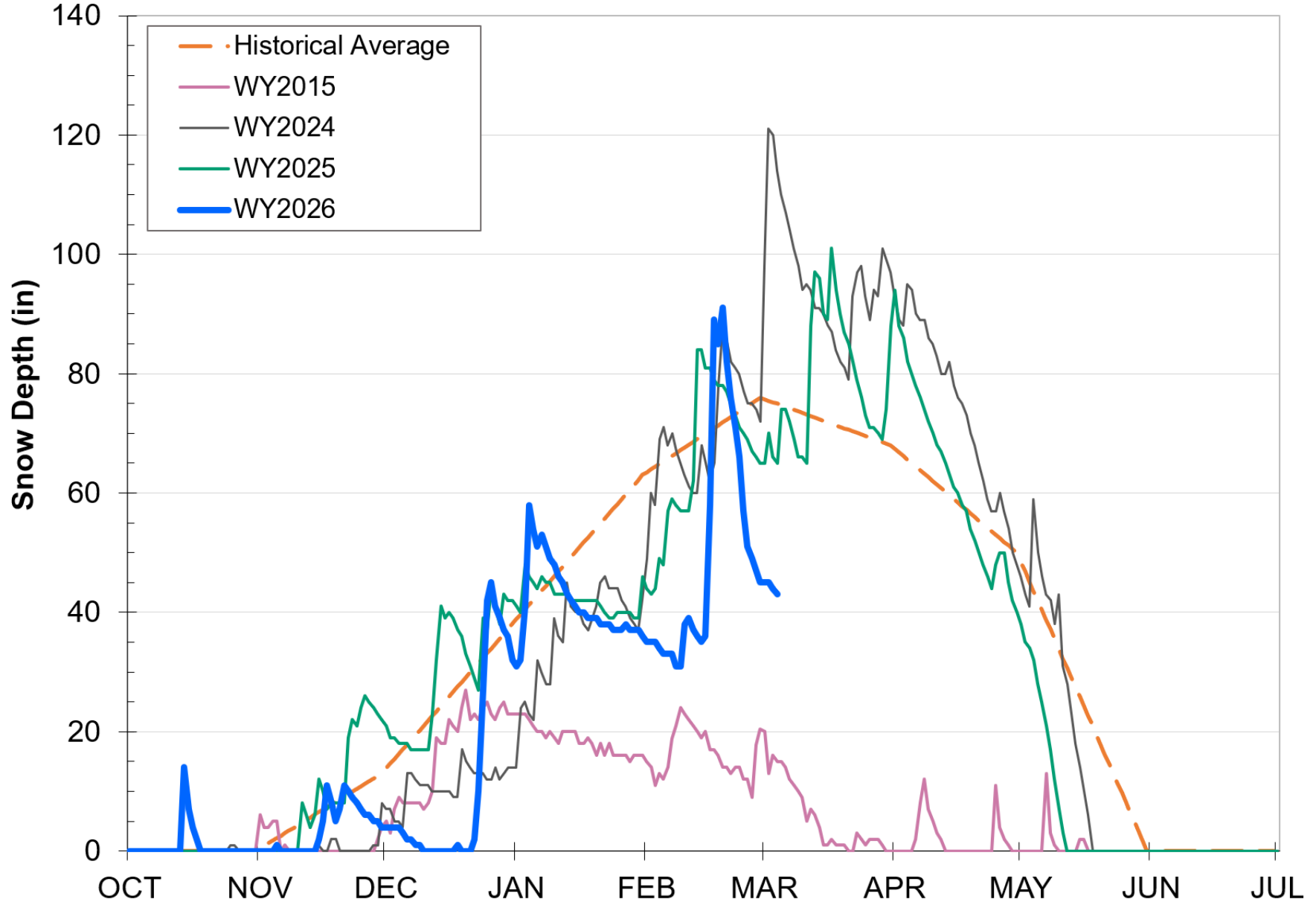
Mokelumne: 34.25"
(98% of average)



Caples Lake Snow as of March 4

Snow Depth – 43.0”
(57% of average)

Snow Water
Content – 12.1”
(45% of average)





Snowpack as of March 5

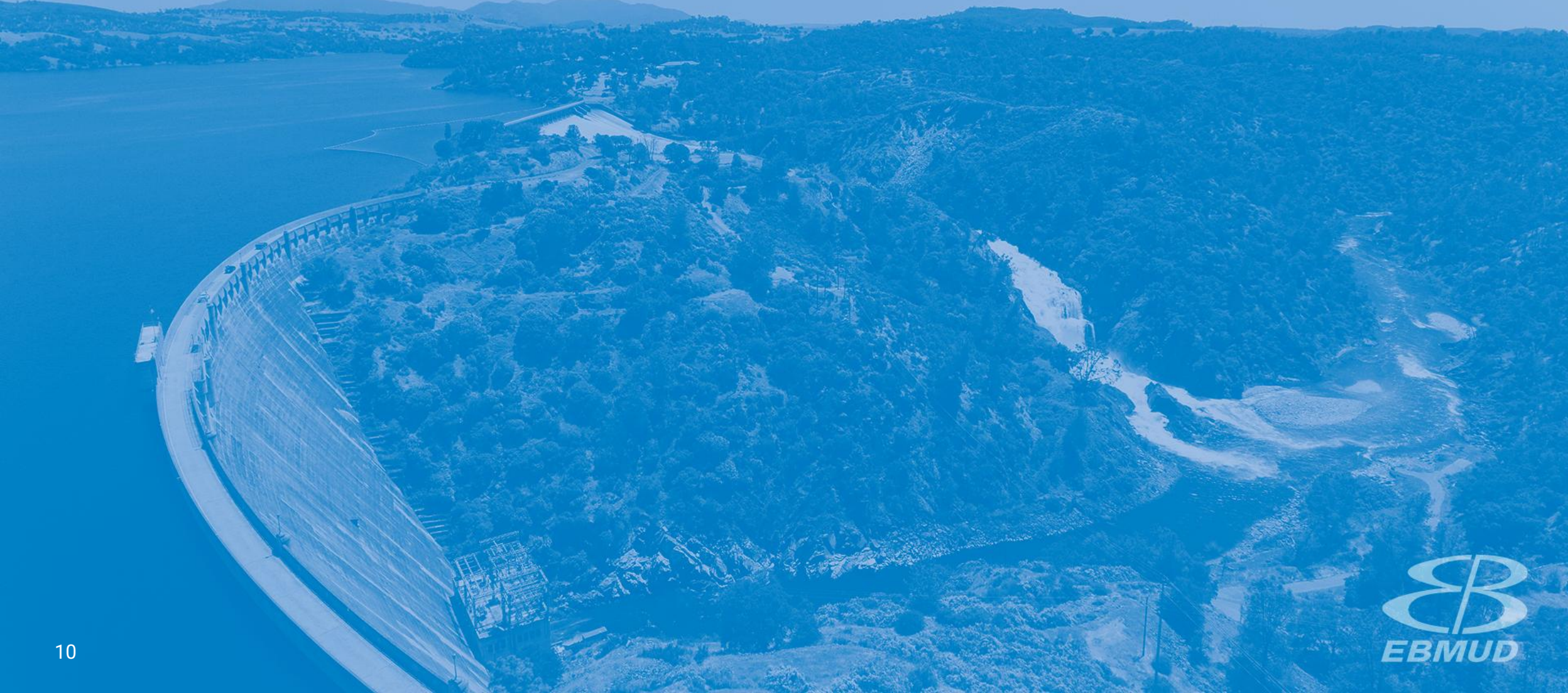
Snow Water Equivalent:
61% of Normal in Central Sierra



Data for: 05-March-2026
Statewide Average: 59%

% of Normal for this Date

Seasonal Climate Outlook



Seasonal Precipitation Outlook

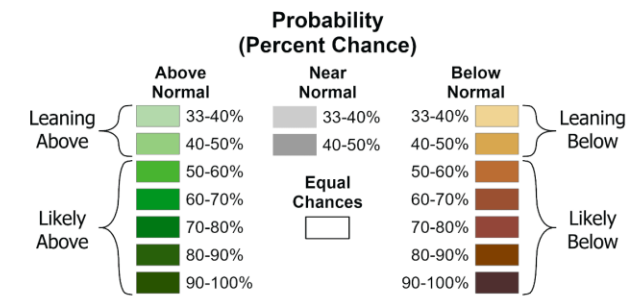
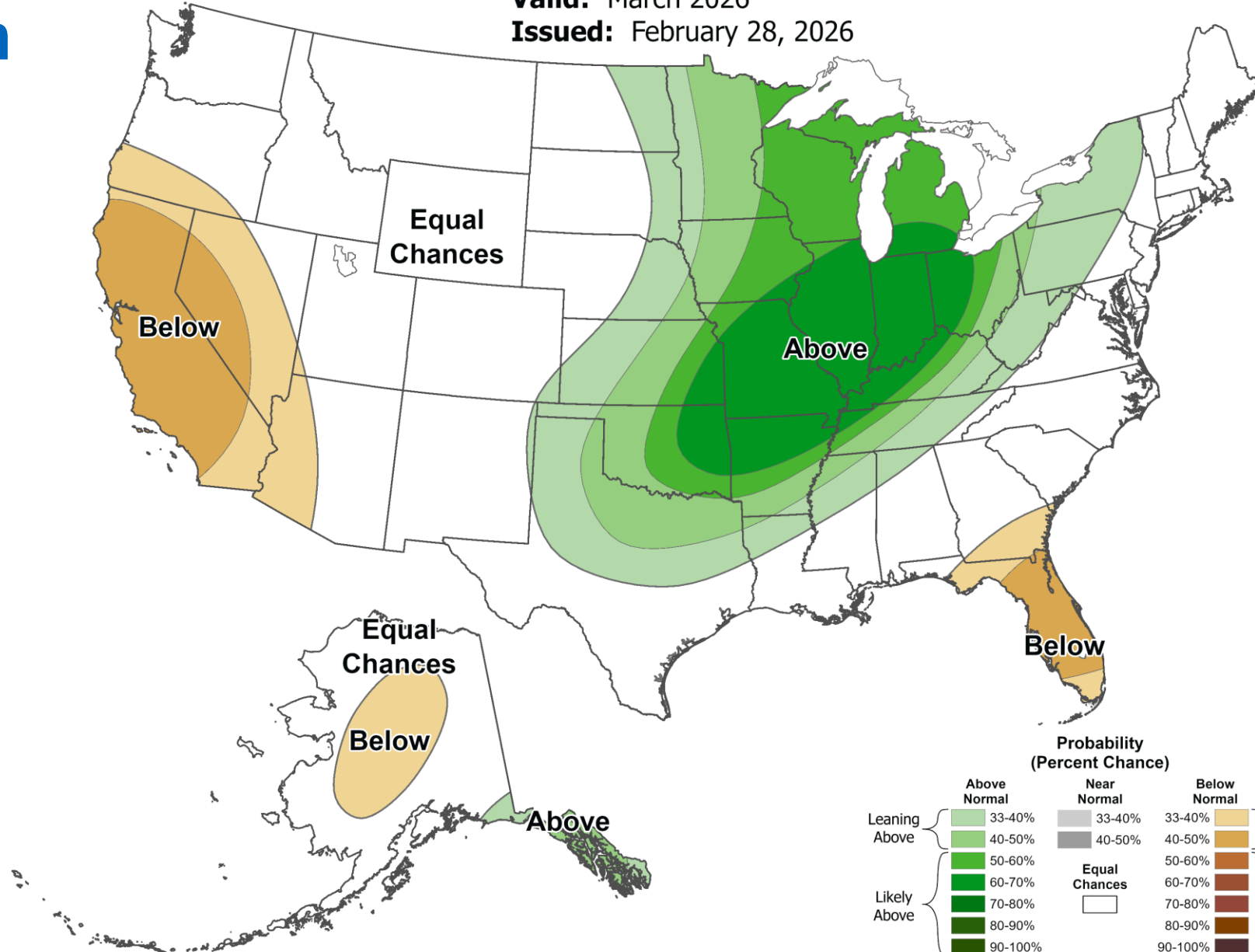


Monthly Precipitation Outlook



Valid: March 2026

Issued: February 28, 2026

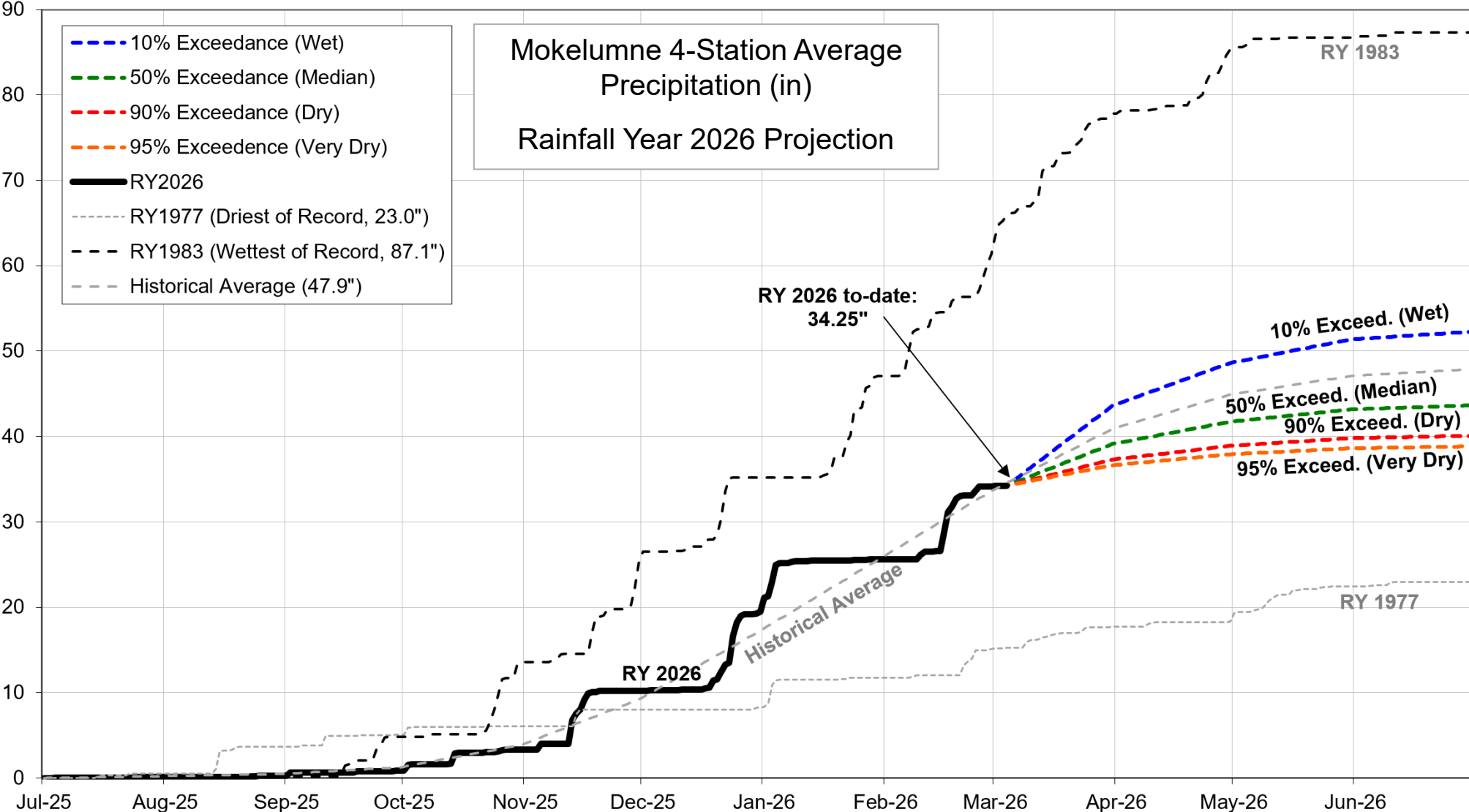


Water Supply Projection



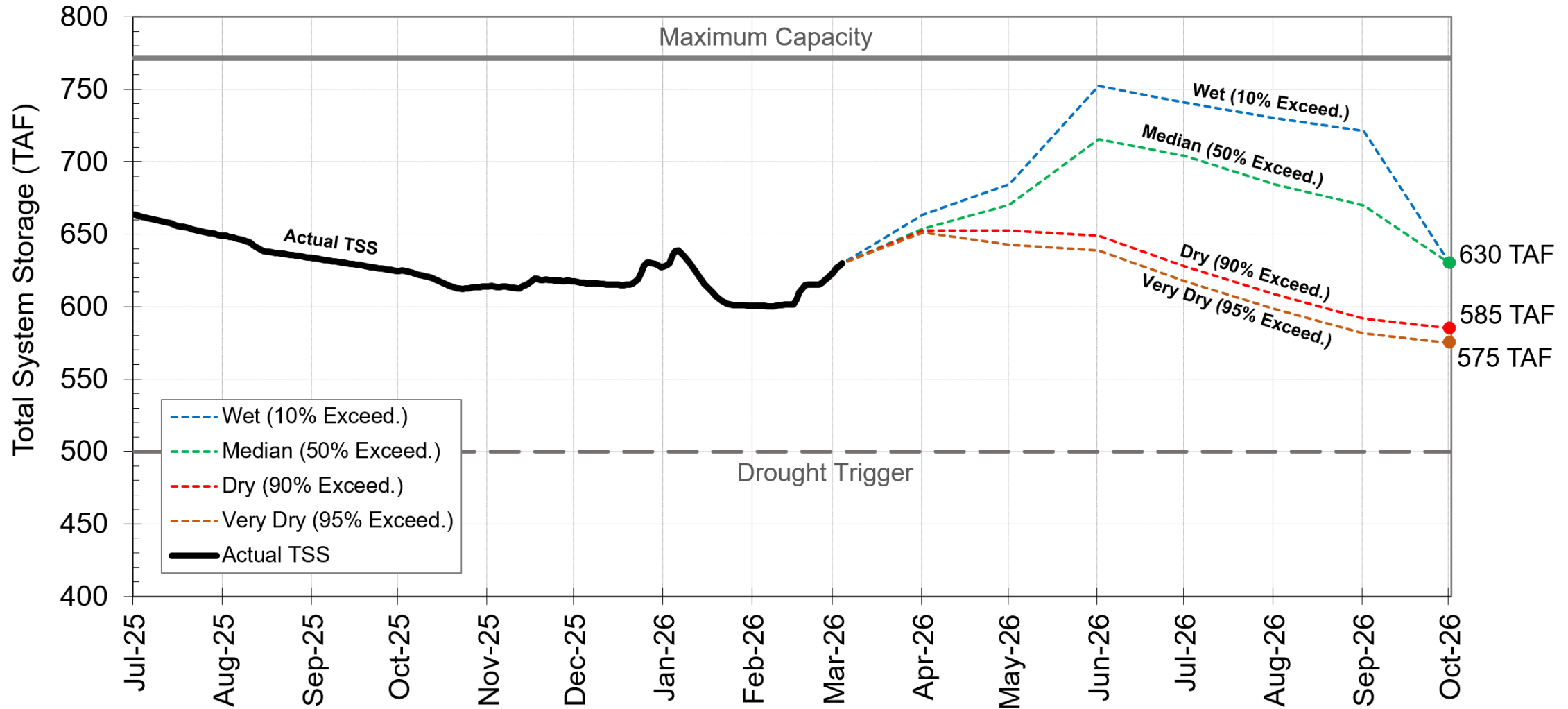
Projected Precipitation

Mokelumne Precipitation Rainfall Year 2026



End of Season Storage

2026 Total System Storage Projections



TAF: Thousands of Acre-Feet



Questions?



WATER SUPPLY ENGINEERING DAILY REPORT

Wednesday, March 4, 2026

RESERVOIR STORAGE AND ELEVATION

	<u>WATER SURFACE</u>		<u>STORAGE</u>		<u>MAXIMUM CAPACITY</u>		Release <u>Cfs</u>	Spill <u>Cfs</u>
	Elevation <u>Feet</u>	+Gain <u>-Loss</u>	+Gain <u>Ac-Ft</u>	+Gain <u>-Loss</u>	Elevation <u>Feet</u>	Storage <u>Ac-Ft</u>		
<u>MOKELUMNE</u>								
Pardee	562.84	0.22	193250	480	567.65	203795	1042	0
Camanche	218.46	0.16	298820	1020	235.5	417120	430	0
<u>EAST BAY</u>								
Briones	573.91	-0.01	57400	-10	576.14	58960	0	0
Chabot	225.35	0	9580	0	227.25	10350	0	0
Lafayette	437.28	-0.01	2860	0	449.16	4250	0	0
San Pablo	307.09	0.05	32620	40	313.68	37915	0	0
Upper San Leandro	455	0.02	<u>35200</u>	<u>20</u>	459.98	<u>38905</u>	0	0
<u>Total East Bay Res.</u>			<u>137660</u>	<u>50</u>		<u>150380</u>		
TOTAL SYSTEM STORAGE			629730	1550		771295		

DISTRIBUTION SYSTEM		
<u>DISTRIBUTION RESERVOIRS</u>		
	Storage <u>MG</u>	Operating <u>Capacity</u>
Today	361	720
Total Previous Day	<u>368</u>	
Total Change	-7	
<u>WATER PRODUCTION AND DEMAND</u>		
	Million <u>Gallons</u>	Capacity <u>MGD</u>
Lafayette WTP	7.7	25
Orinda WTP	93	190
San Pablo WTP	0	30
Sobrante WTP	0	50
Upper San Leandro WTP	0	45
Walnut Creek WTP	20	90
<u>TOTAL SURFACE PRODUCTION</u>	120.7	430
Miscellaneous(Estimated)	0.4	
<u>TOTAL WATER PRODUCTION</u>	<u>121.1</u>	
Change in Distribution System	-7	
Wash Water from Distribution Sys.	0.4	
<u>SYSTEM DEMAND</u>		
East-of-Hills Demand	26.2	
West-of-Hills Demand	101.2	

MOKELUMNE SYSTEM			
<u>AQUEDUCT DELIVERIES</u>			
	<u>MG</u>	<u>Flow Conditions</u>	
Line 1	39.6	GRAVITY	
Line 2	0	SHUTDOWN	
Line 3	<u>98.6</u>	<u>GRAVITY</u>	
TOTAL	138.2	214 Cfs	
<u>FSCC to MOK AQUEDUCTS (Measured at Brandt), MG</u>			
Mok 1	0		
Mok 2	<u>0</u>		
	0 MG		
<u>RIVER FLOWS AND RELEASES</u>			
		<u>Cfs</u>	
Mokelumne River Natural Flow		2428	
Pardee Reservoir Inflow		1510	
Pardee Release to Camanche Res.		1042	
Pardee Release to JVID		0	
Camanche Release to Mokel. River		430	
<u>PG&E CO. STORAGE (Acre-feet)</u>			
	<u>Storage</u>	<u>Change</u>	<u>Maximum Capacity</u>
Old Reservoirs	16991	59	26560
Salt Springs Res.	96105	1520	141857
Lower Bear Res.	<u>32262</u>	<u>241</u>	<u>52025</u>
Total	145358	1820	220442

	<u>Ac-ft</u>	
	<u>INPUT</u>	<u>DRAFT</u>
Briones Res.	0	11
San Pablo Res.	64	0
U. San Leandro Res.	0	0
TOTAL	64	11

<u>STATION</u>	PRECIPITATION (Inches)				
	<u>THIS YEAR</u>		<u>AVERAGE YEAR</u>		
	<u>Today</u>	<u>Month</u>	<u>to-Date</u>	<u>Season to-Date</u>	<u>Season Total</u>
USL WTP	0	0.06	16.03	19.26	25.33
Orinda WTP	0	0.07	23.37	24.28	32.06
Lafayette Reservoir	0	0.04	16.8	21.61	28.18
Walnut Creek WTP	0	0.05	17.01	17.88	23.02
Camp Pardee	0	0	16.58	15.43	21.56
Salt Springs P.H.	0	0	34.26	32.54	45.51

REMARKS
 WID Canal Diversion = 15 cfs
 Mokelumne River below WID = 328 cfs

PG&E data as of 4:00 pm previous date.
 All other data as of midnight.
 WTP capacities are sustainable rates.

<u>CAPLES LAKE (7,830 FT) DATA</u>			
	<u>Today</u>	<u>Average</u>	
Snow Depth	43 Inches	75 Inches	
Water Content	12.1 Inches	27.1 Inches	