



# Water Supply Update

Board of Directors

February 10, 2026

Roberto C. Cortez, Manager of Water Operations

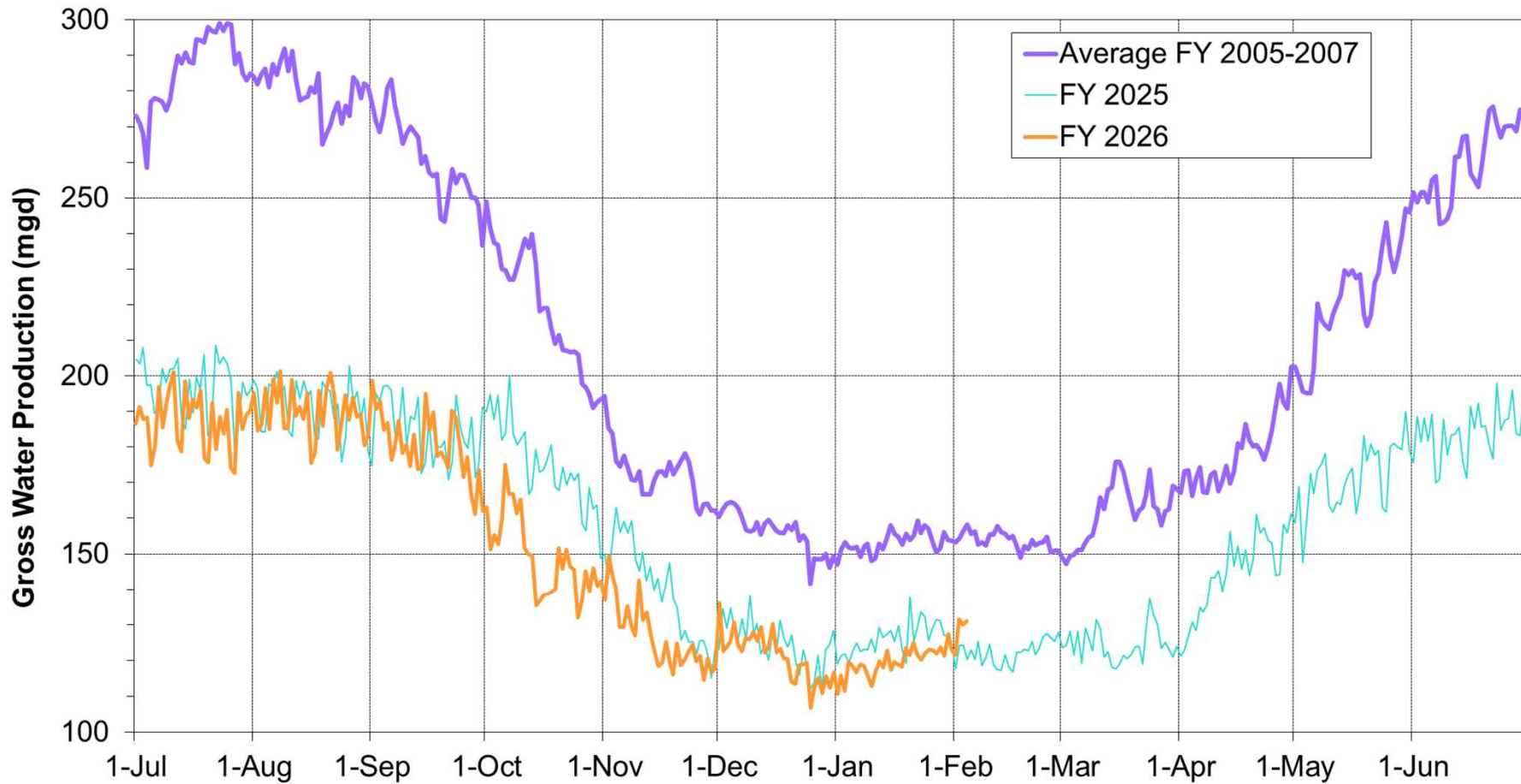


## Briefing Topics

- Current Water Supply
- Seasonal Climate Outlook
- Water Supply Projection

# Current Water Supply

# Gross Water Production



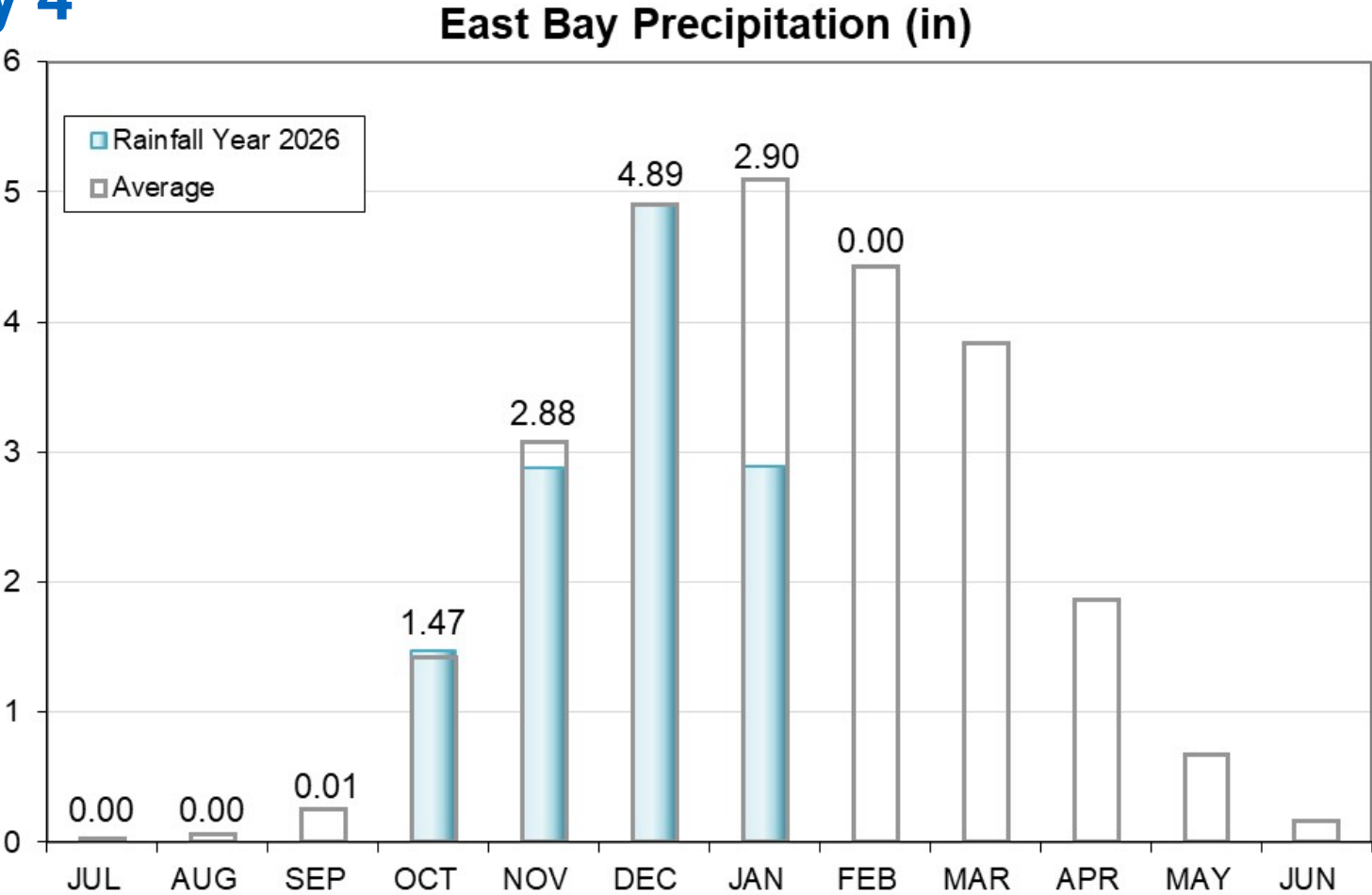
# Current Reservoir Storage

As of 2/4/2026	Current Storage	Percent of Average	Percent of Capacity
Pardee	178,040 AF	99%	87%
Camanche	291,200 AF	111%	70%
East Bay	131,310 AF	103%	87%
Total System	600,550 AF	106%	78%

AF: Acre-Feet

# Precipitation as of February 4

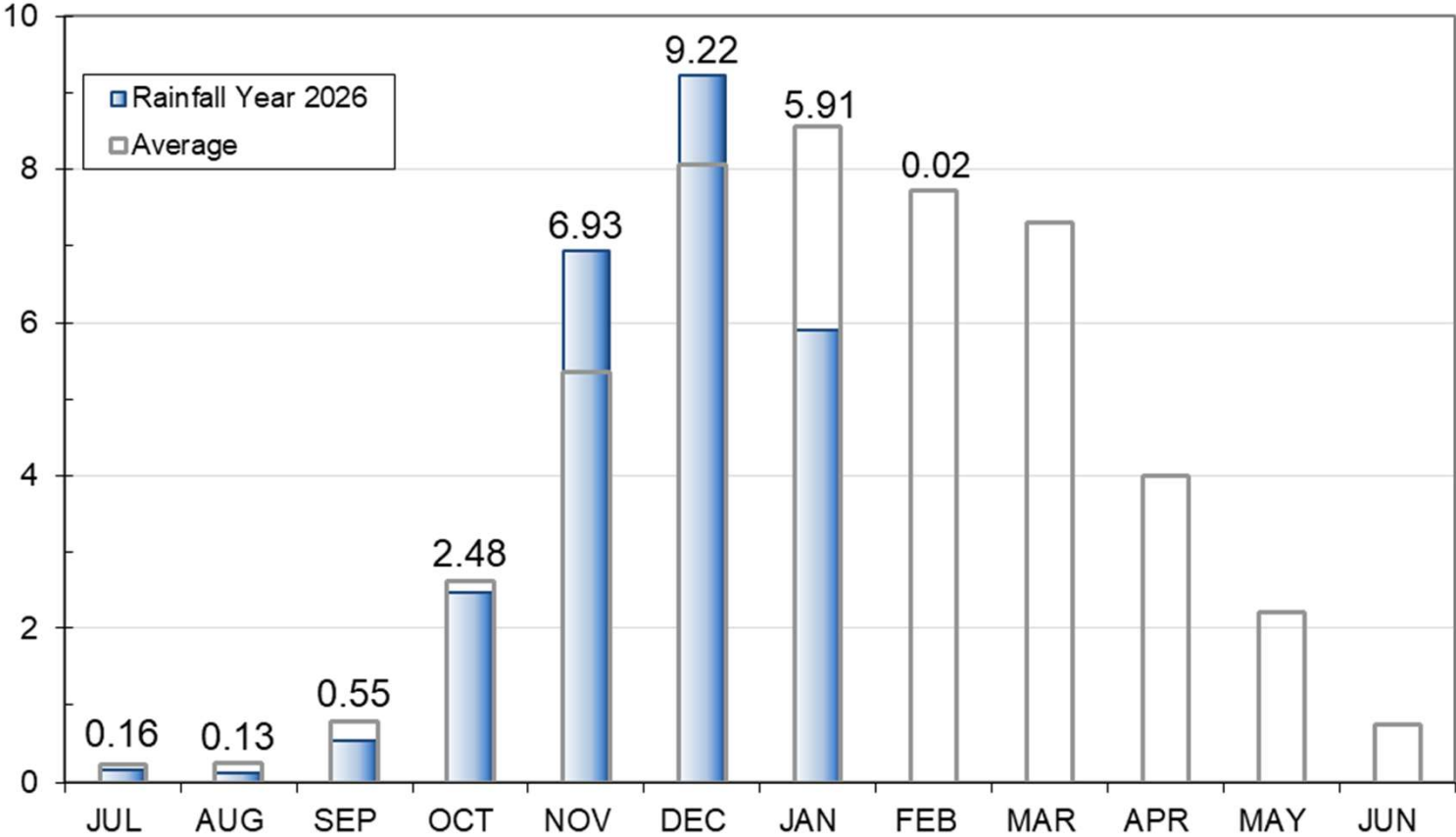
East Bay: 12.14"  
(76% of average)



# Precipitation as of February 4

Mokelumne: 25.4"  
(93% of average)

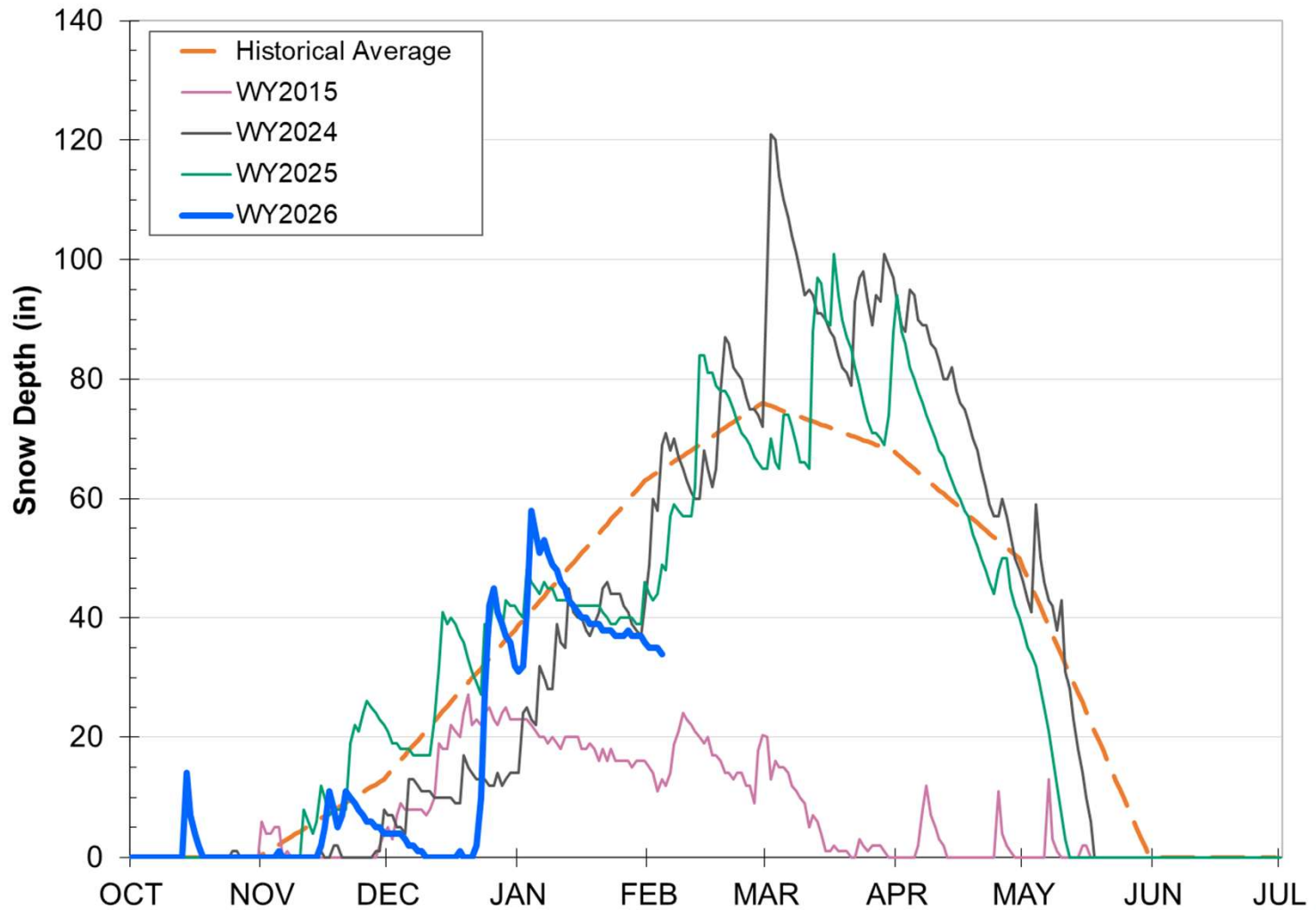
Mokelumne 4-Station Average Precipitation (in)



# Caples Lake Snow as of February 4

Snow Depth – 34.0"  
(52% of average)

Snow Water  
Content – 8.75"  
(41% of average)





9 Mokelumne Watershed, C. Sarkis  
March 2014

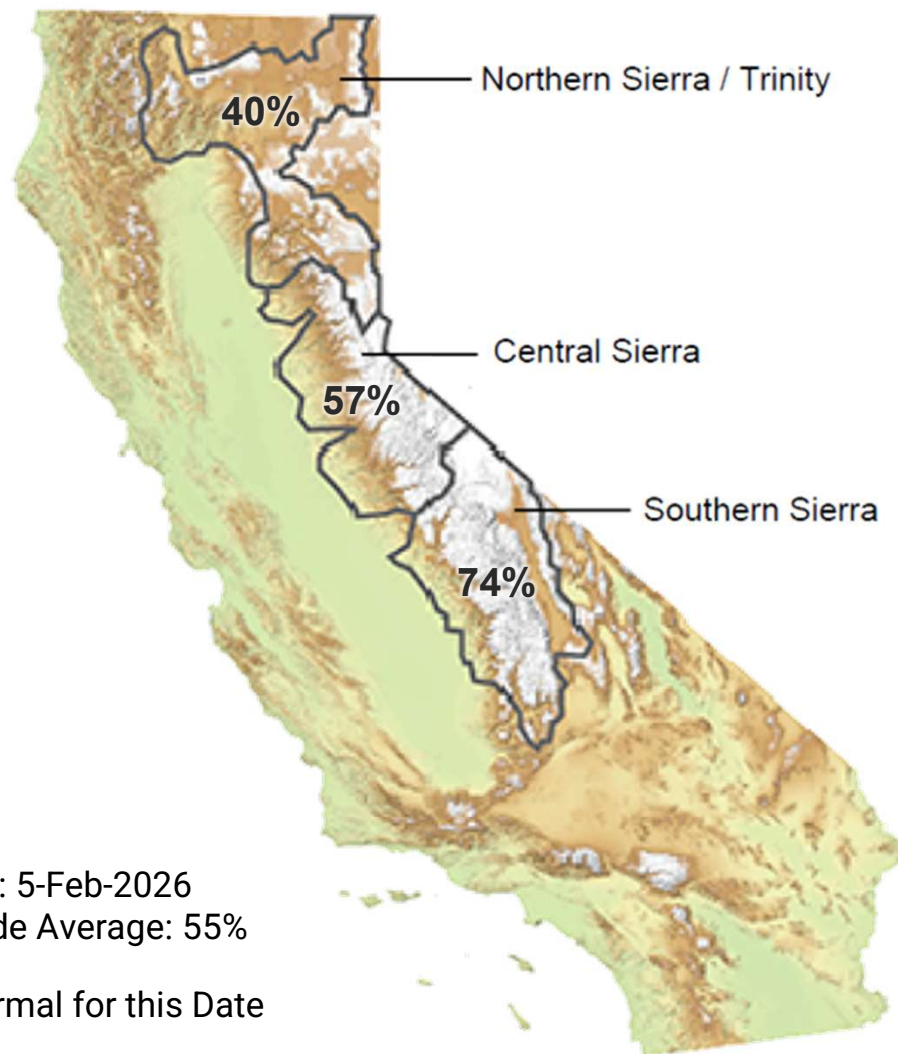
## Snowpack as of February 5

Snow Water Equivalent:  
57% of Normal in Central  
Sierra



Data for: 5-Feb-2026  
Statewide Average: 55%

% of Normal for this Date



# Seasonal Climate Outlook

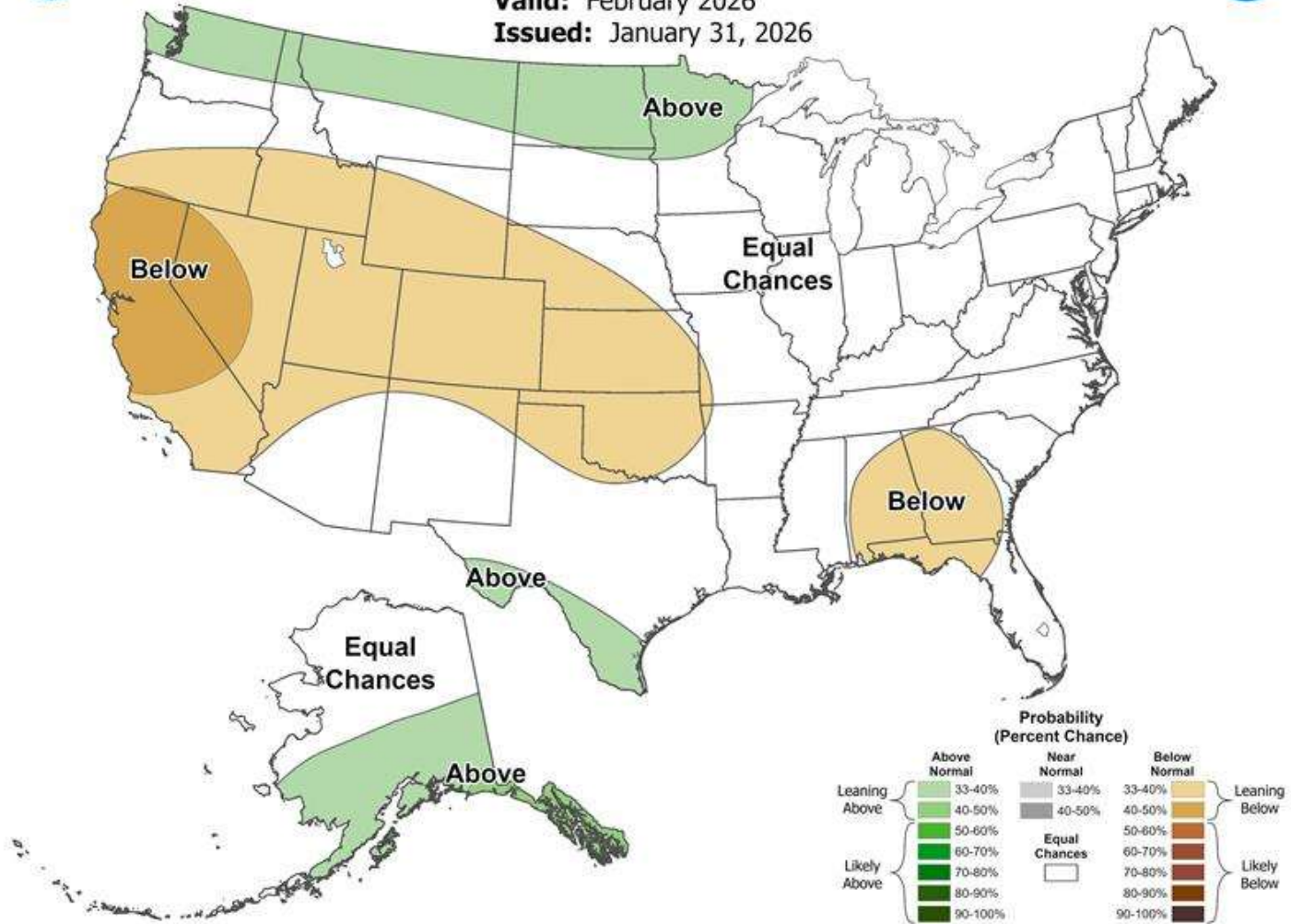
# Seasonal Precipitation Outlook



## Monthly Precipitation Outlook

Valid: February 2026

Issued: January 31, 2026

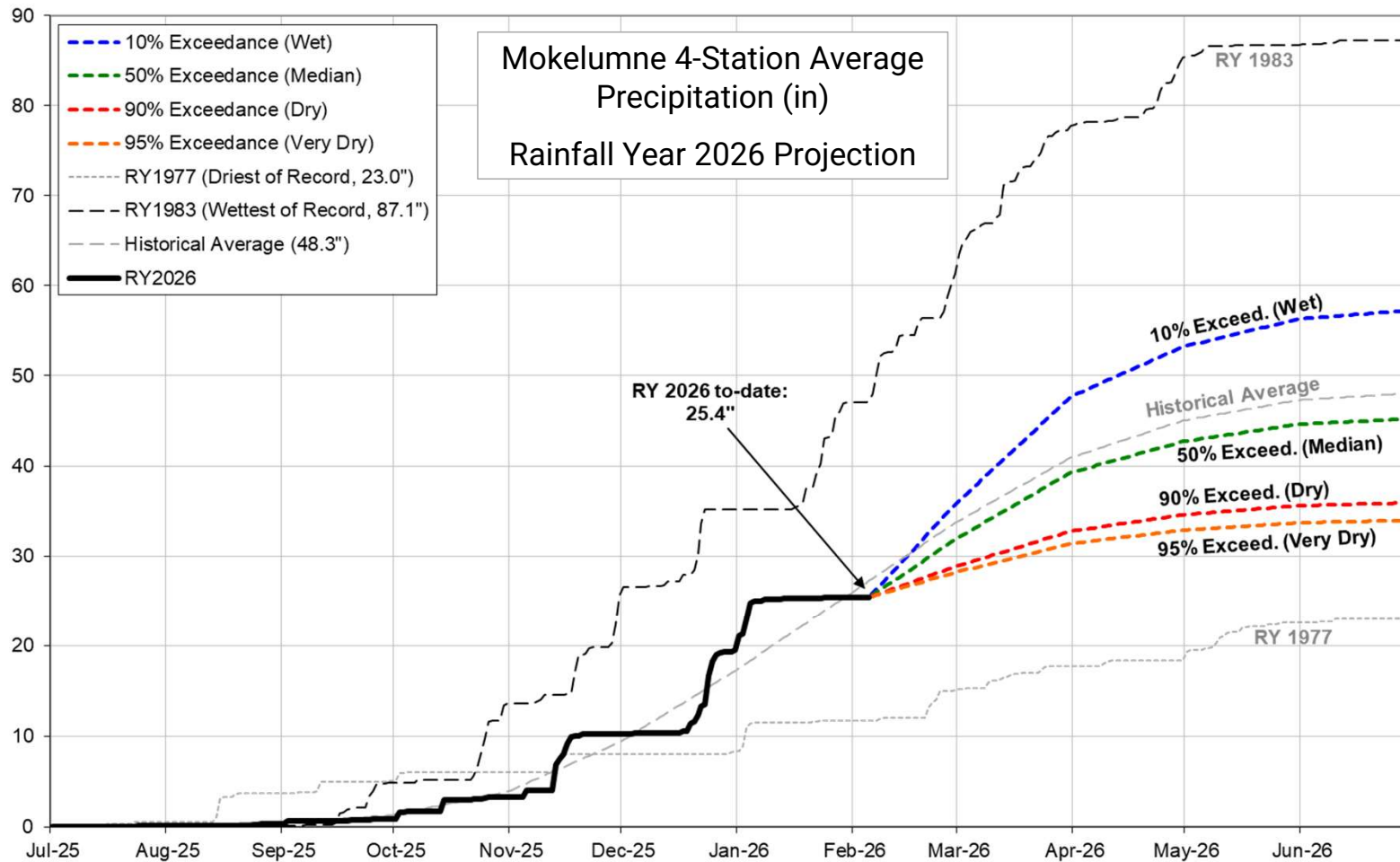


# Water Supply Projection



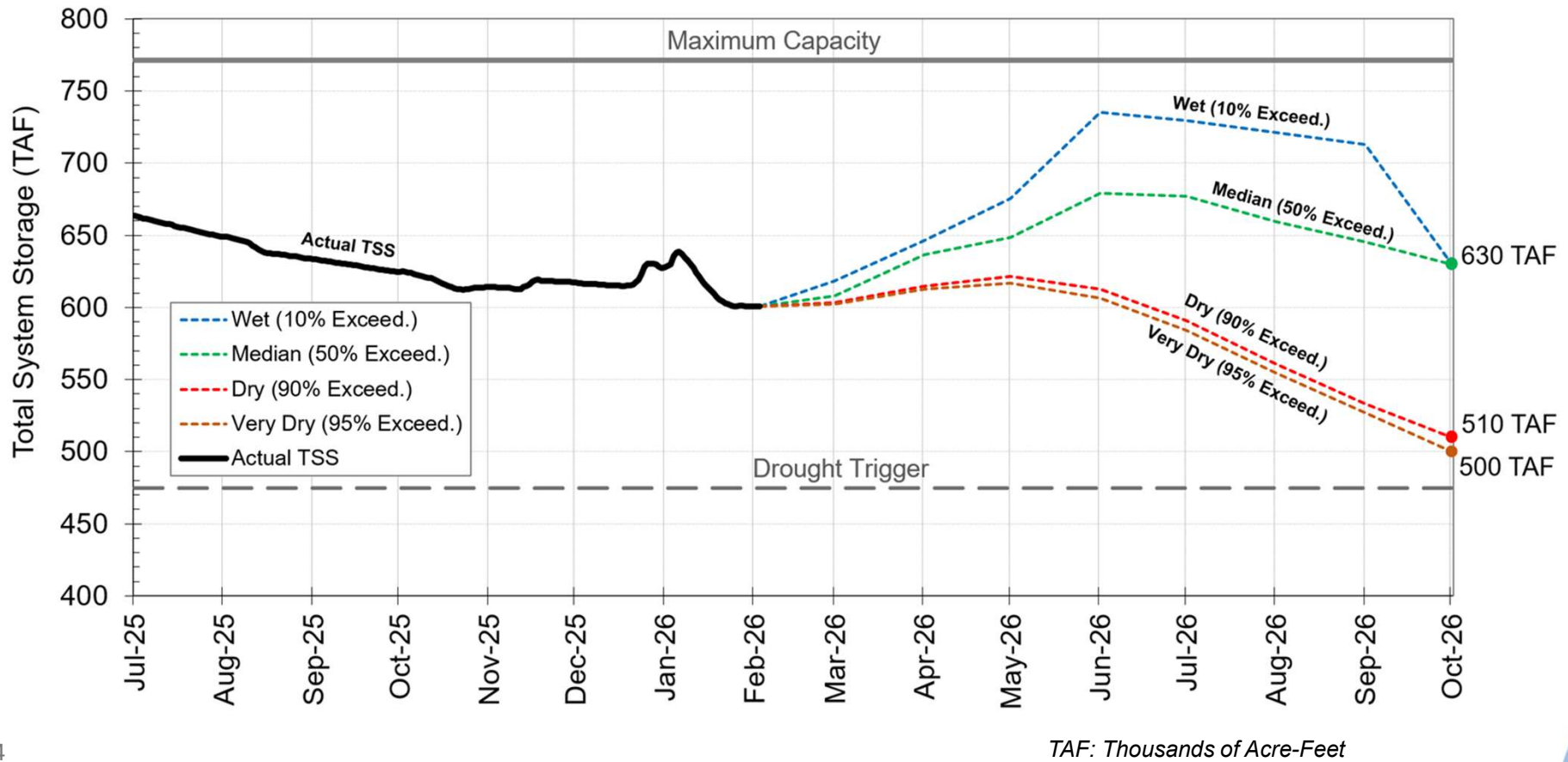
# Projected Precipitation

## Mokelumne Precipitation Rainfall Year 2026



# End of Season Storage

## 2026 Total System Storage Projections





# Questions?

