



Water Supply Update

Board of Directors
January 27, 2026

Roberto C. Cortez, Manager of Water Operations



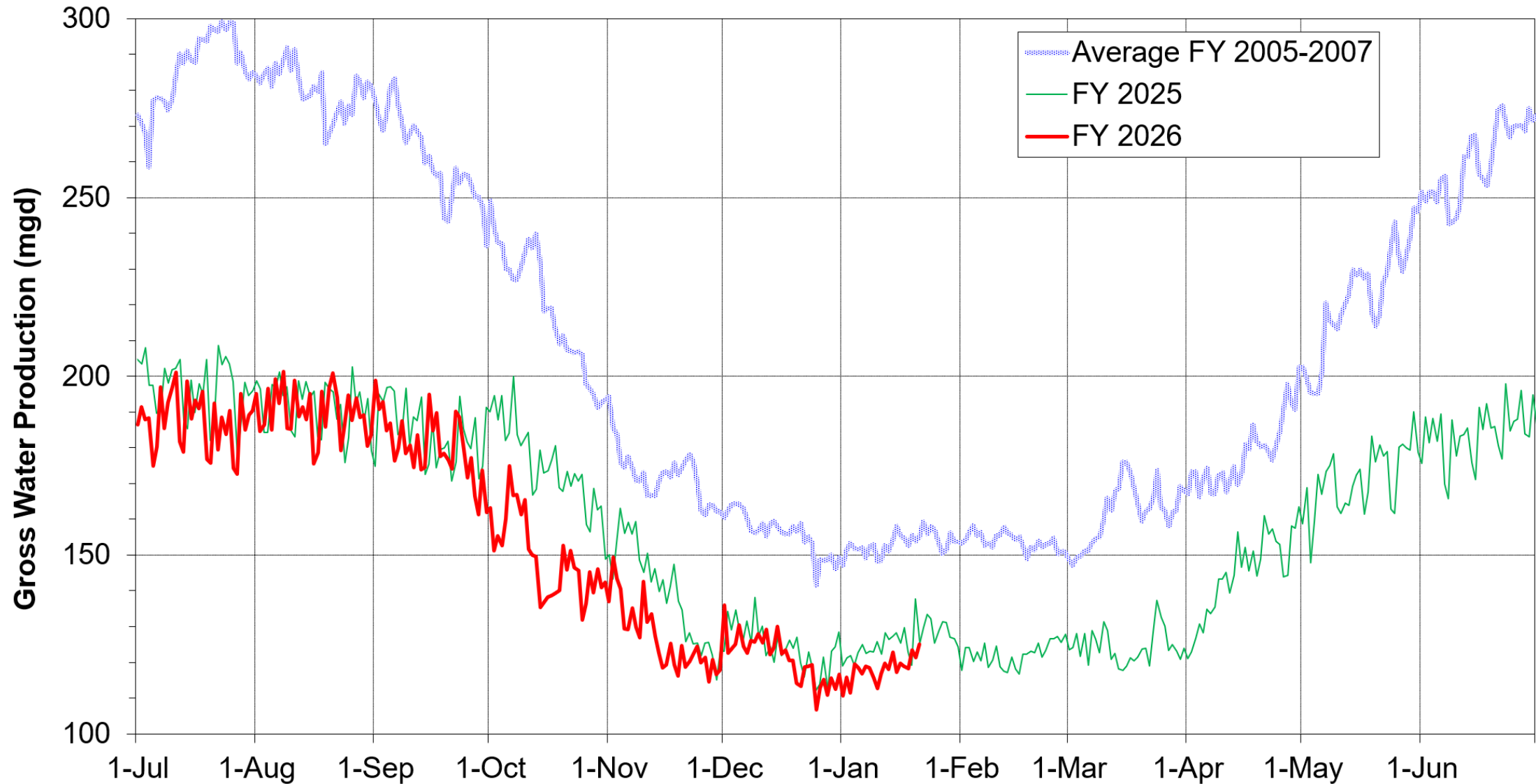
Briefing Topics

- Current Water Supply
- Seasonal Climate Outlook
- Water Supply Projection

Current Water Supply



Gross Water Production



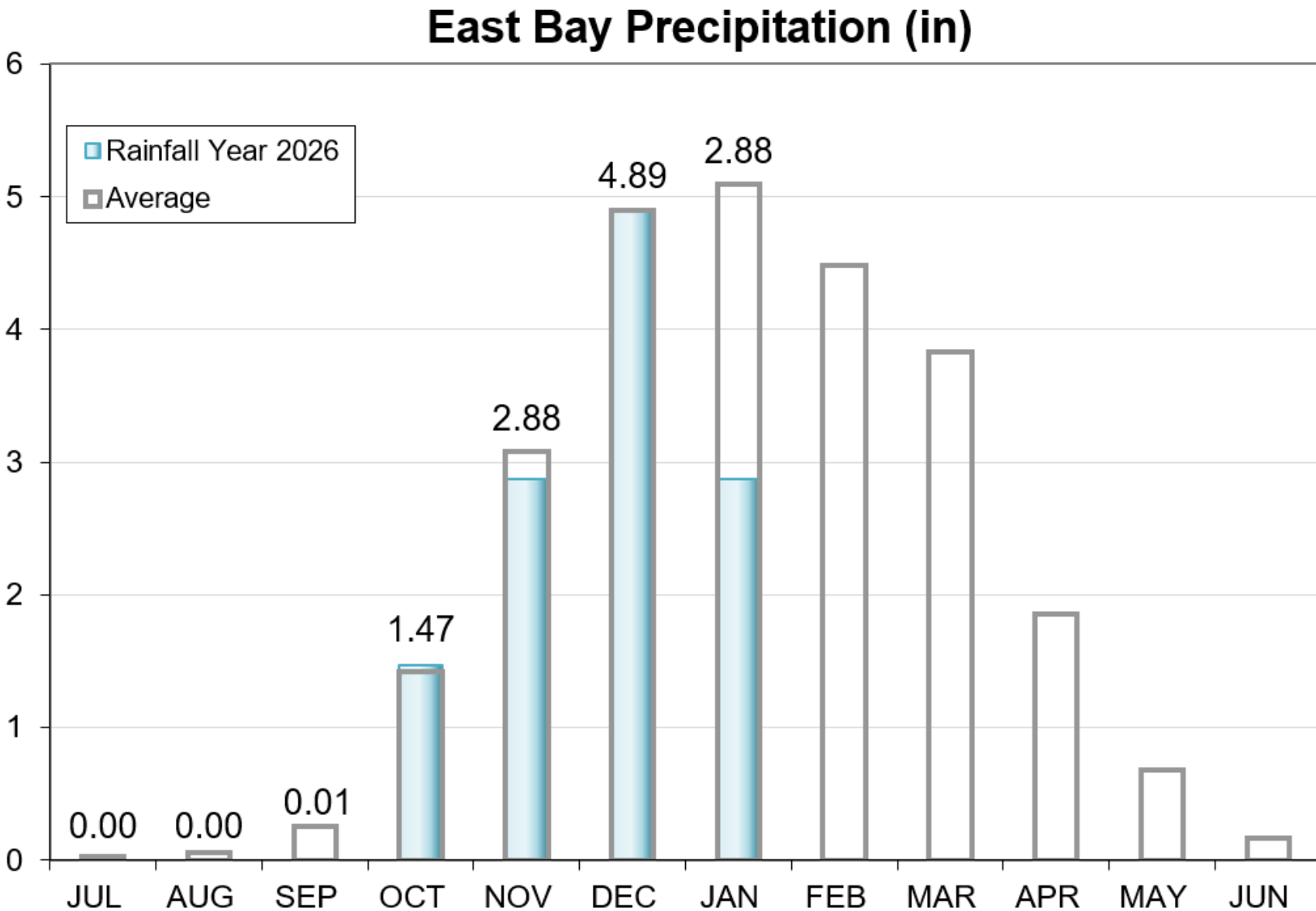
Current Reservoir Storage

As of 1/21/2026	Current Storage	Percent of Average	Percent of Capacity
Pardee	181,110 AF	101%	89%
Camanche	291,580 AF	113%	70%
East Bay	131,590 AF	106%	88%
Total System	604,280 AF	107%	78%

AF: Acre-Feet

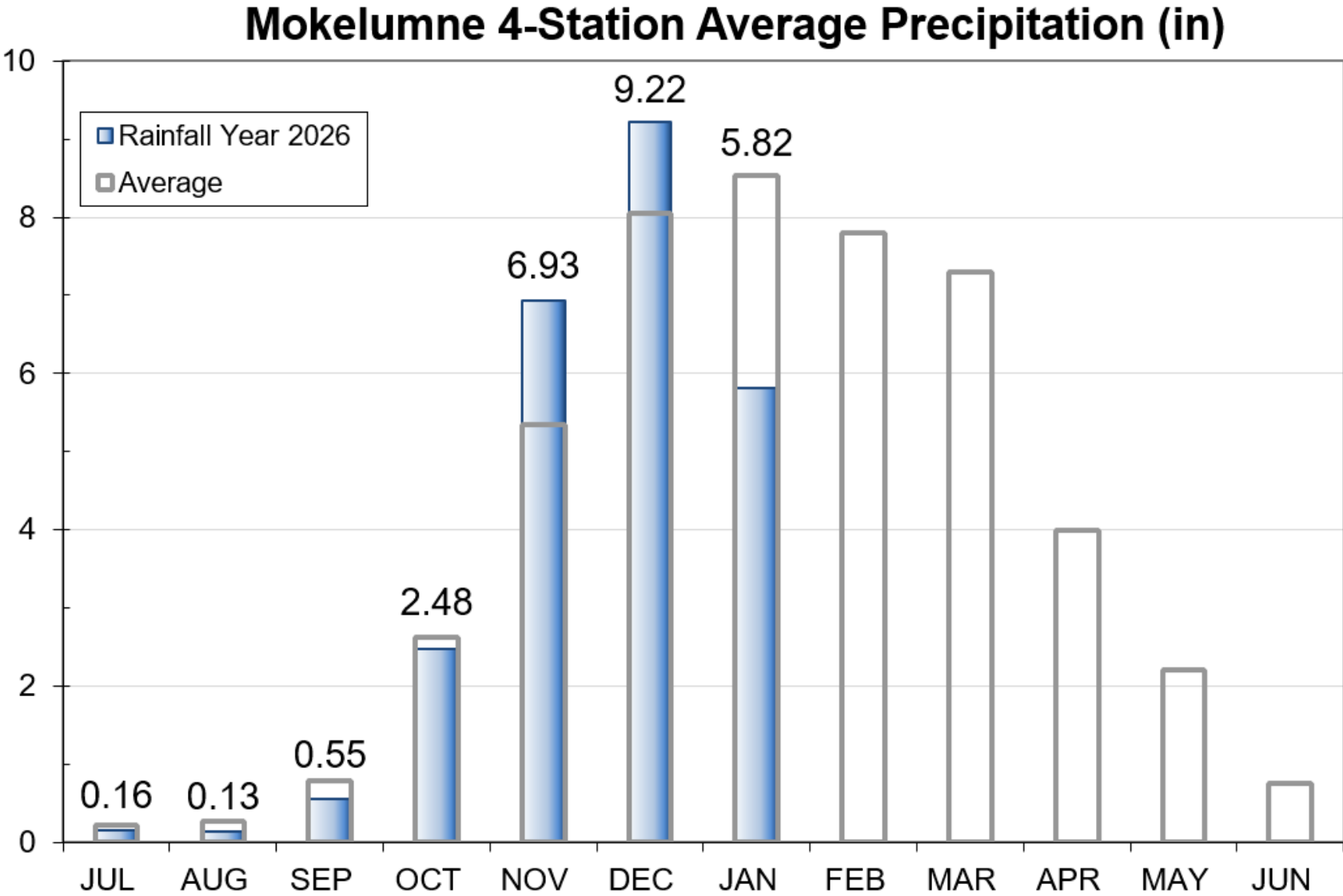
Precipitation as of January 21

East Bay: 12.12"
(90% of average)



Precipitation as of January 21

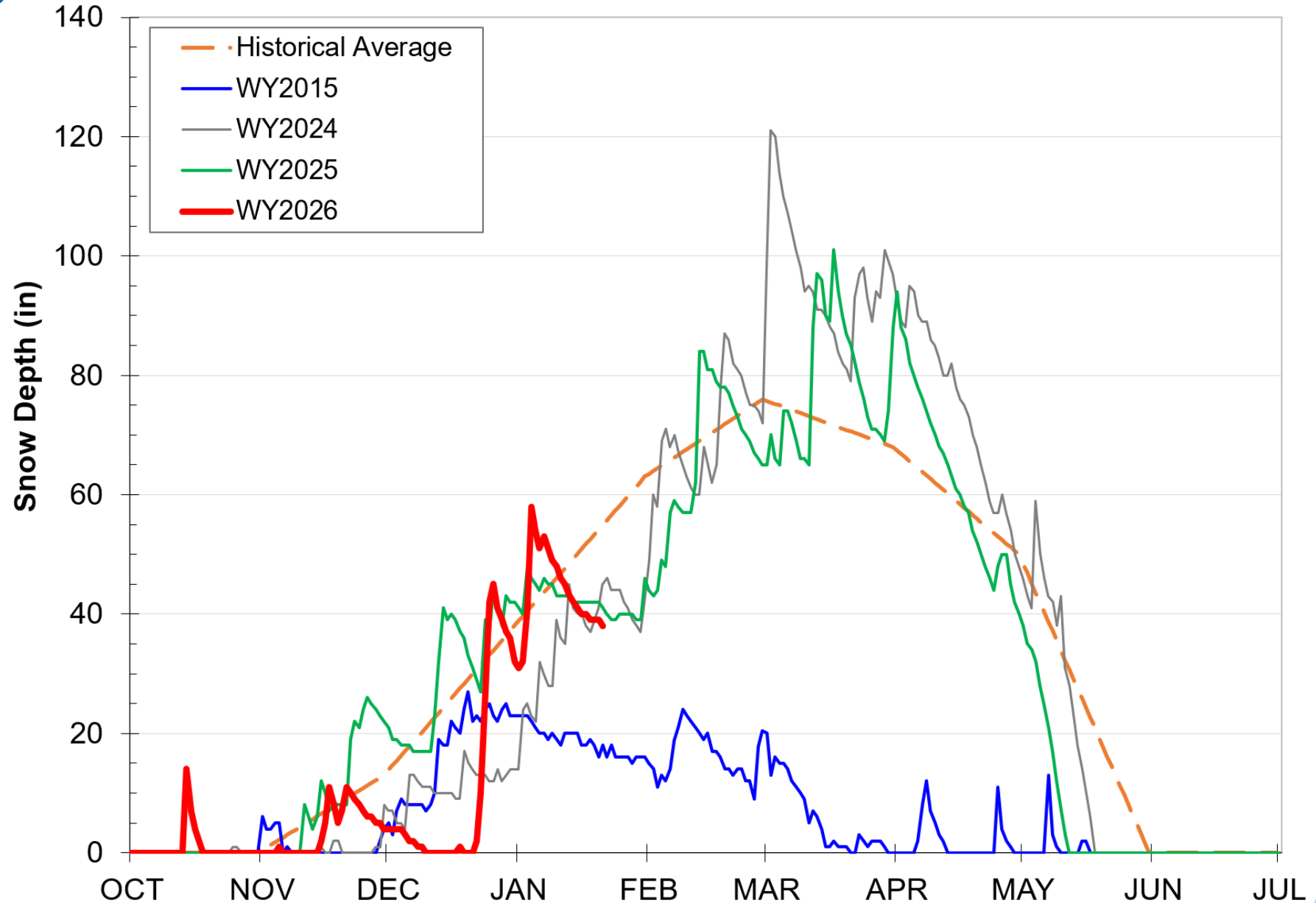
Mokelumne: 25.29"
(109% of average)



Caples Lake Snow as of January 21

Snow Depth – 38.0"
(69% of average)

Snow Water
Content – 10.1"
(58% of average)





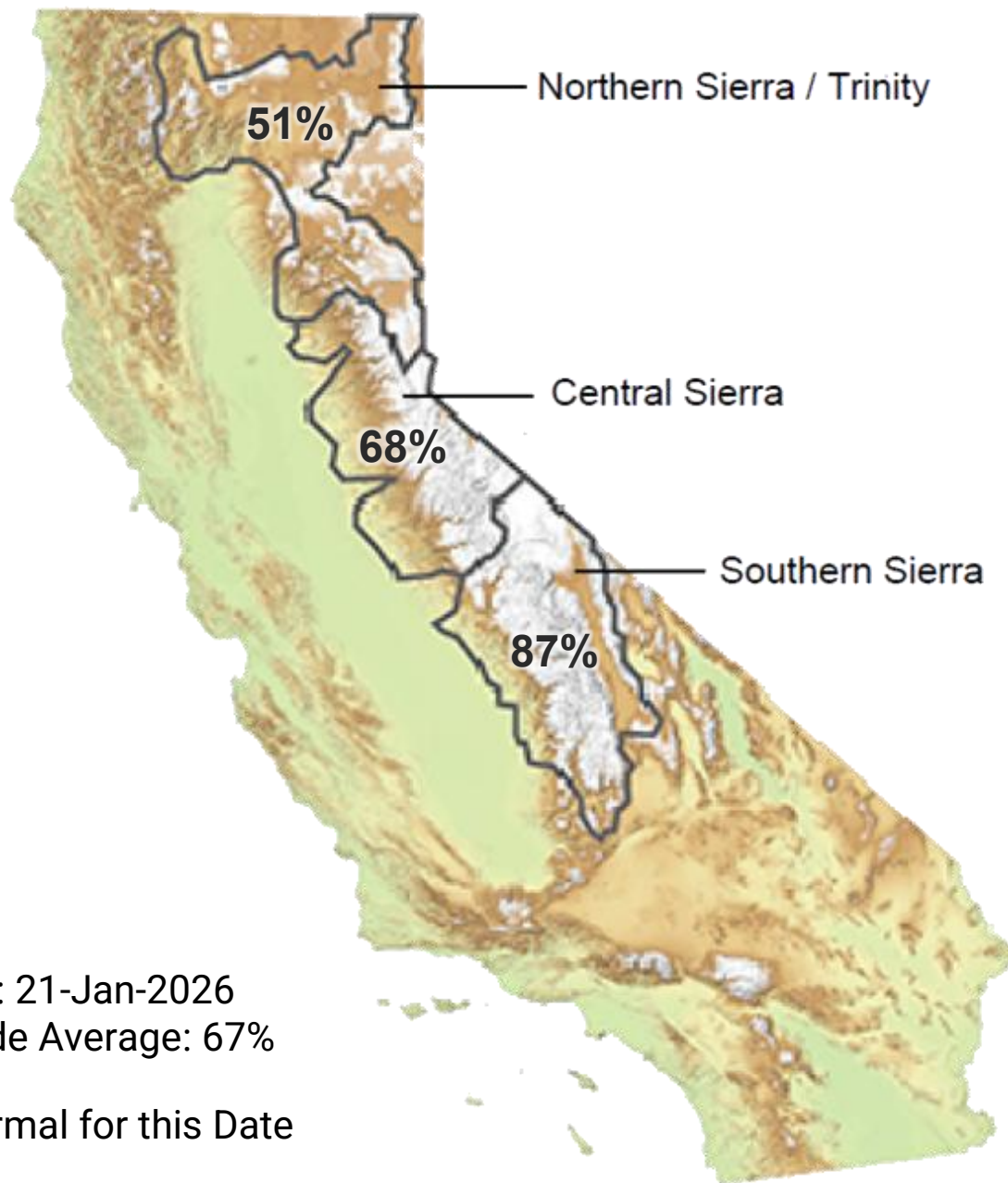
Snowpack as of January 21

Snow Water Equivalent:
68% of Normal in Central Sierra



Data for: 21-Jan-2026
Statewide Average: 67%

% of Normal for this Date



Seasonal Climate Outlook

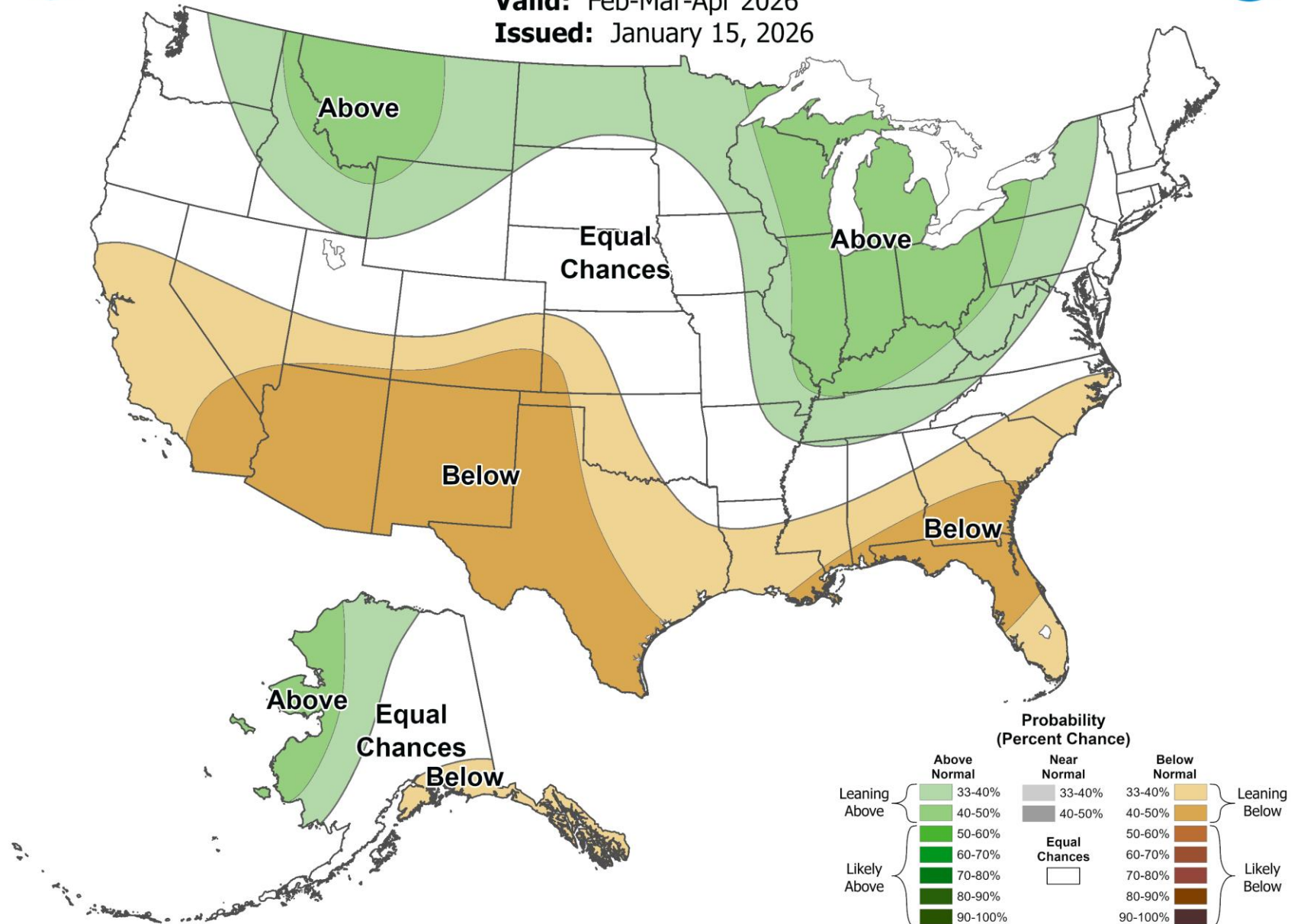
Seasonal Precipitation Outlook



Seasonal Precipitation Outlook

Valid: Feb-Mar-Apr 2026

Issued: January 15, 2026

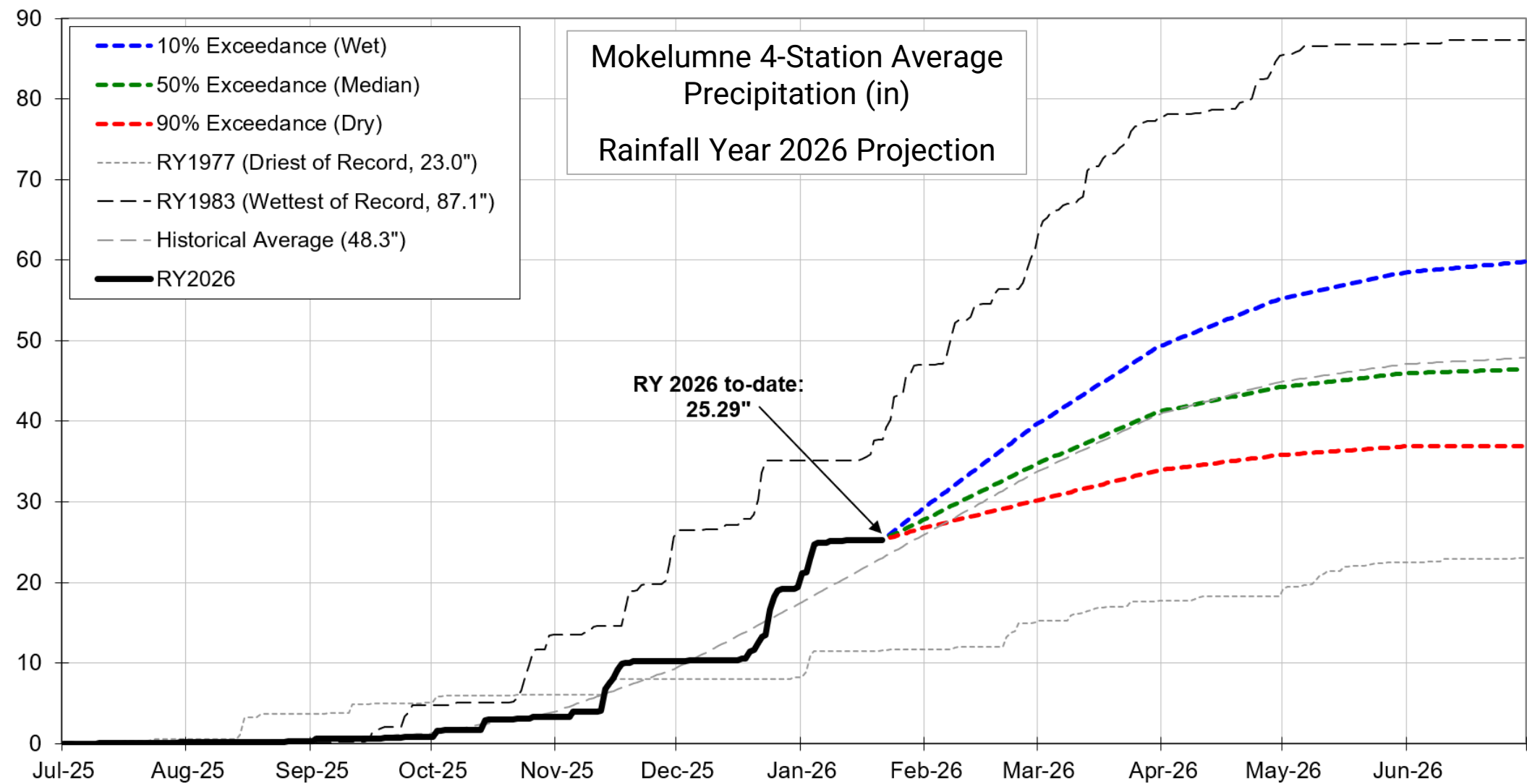


Water Supply Projection



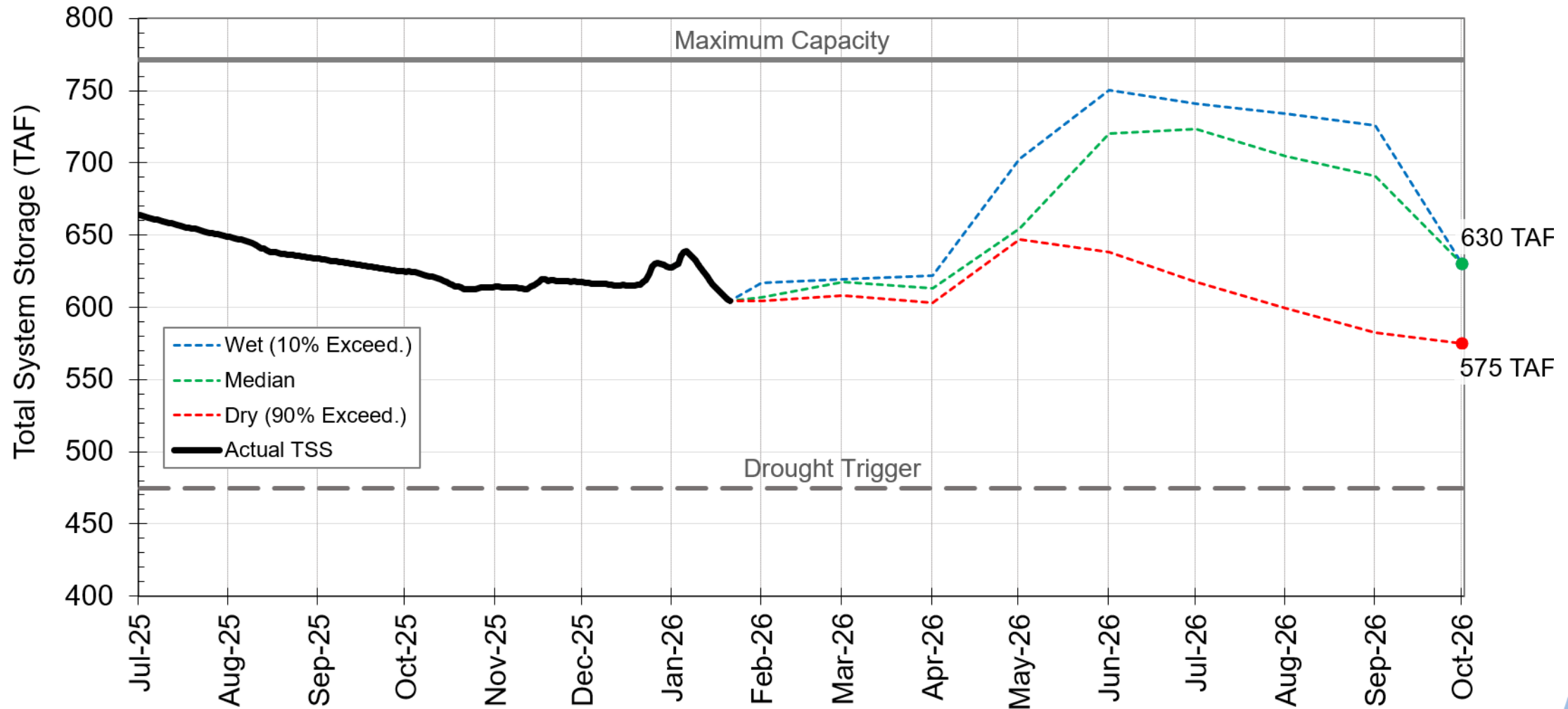
Projected Precipitation

Mokelumne Precipitation Rainfall Year 2026



End of Season Storage

2026 Total System Storage Projections



TAF: Thousands of Acre-Feet



Questions?



WATER SUPPLY ENGINEERING DAILY REPORT

Wednesday, January 21, 2026

RESERVOIR STORAGE AND ELEVATION

<u>WATER SURFACE</u>			<u>STORAGE</u>		<u>MAXIMUM CAPACITY</u>			
	Elevation	+Gain		+Gain	Elevation	Storage	Release	Spill
<u>MOKELUMNE</u>	<u>Feet</u>	<u>-Loss</u>	<u>Ac-Ft</u>	<u>-Loss</u>	<u>Feet</u>	<u>Ac-Ft</u>	<u>Cfs</u>	<u>Cfs</u>
Pardee	557.09	-0.19	181110	-390	567.65	203795	973	0
Camanche	217.32	-0.13	291580	-820	235.5	417120	1393	0
<u>EAST BAY</u>								
Briones	571.34	-0.03	55640	-20	576.14	58960	0	0
Chabot	224.2	0	9230	0	227.25	10350	0	0
Lafayette	436.27	0	2760	0	449.16	4250	0	0
San Pablo	303	-0.05	29560	-30	313.68	37915	0	0
Upper San Leandro	453.88	-0.05	<u>34400</u>	<u>-30</u>	459.98	<u>38905</u>	0	0
<u>Total East Bay Res.</u>			<u>131590</u>	<u>-80</u>	<u>150380</u>			
TOTAL SYSTEM STORAGE			604280	-1290	771295			
DISTRIBUTION SYSTEM					MOKELUMNE SYSTEM			
<u>DISTRIBUTION RESERVOIRS</u>					<u>AQUEDUCT DELIVERIES</u>			
	Storage	Operating				<u>MG</u>	<u>Flow Conditions</u>	
	<u>MG</u>	<u>Capacity</u>			Line 1	39.6	GRAVITY	
Today	409	720			Line 2	0	SHUTDOWN	
Total Previous Day	<u>412</u>				Line 3	<u>52.2</u>	<u>THROTTLE</u>	
Total Change	-3				TOTAL	91.8	142 Cfs	
<u>WATER PRODUCTION</u>					<u>FSCC to MOK AQUEDUCTS (Measured at Brandt), MGD</u>			
	Million	Capacity			Mok 1	0		
<u>AND DEMAND</u>	<u>Gallons</u>	<u>MGD</u>			Mok 2	<u>0</u>		
Lafayette WTP	11.3	25			0 MG			
Orinda WTP	57	190			<u>RIVER FLOWS AND RELEASES</u>			
San Pablo WTP	0	30						
Sobrante WTP	16.4	50			Cfs			
Upper San Leandro WTP	17.2	45			Mokelumne River Natural Flow			
Walnut Creek WTP	20.1	90			Pardee Reservoir Inflow			
<u>TOTAL SURFACE PRODUCTION</u>					Pardee Release to Camanche Res.			
Miscellaneous(Estimated)	0.4				Pardee Release to JVID			
<u>TOTAL WATER PRODUCTION</u>	<u>122.4</u>				Camanche Release to Mokel. River			
Change in Distribution System	-3							
Wash Water from Distribution Sys.	0							
<u>SYSTEM DEMAND</u>					<u>PG&E CO. STORAGE (Acre-feet)</u>			
East-of-Hills Demand	25						Maximum	
West-of-Hills Demand	100					<u>Storage</u>	<u>Change</u>	<u>Capacity</u>
<u>RAW WATER TRANSMISSION</u>					<u>PRECIPITATION (Inches)</u>			
	<u>Ac-ft</u>				<u>THIS YEAR</u>		<u>AVERAGE YEAR</u>	
	<u>INPUT</u>	<u>DRAFT</u>						
Briones Res.	0	0			<u>STATION</u>	This	Season	Season
San Pablo Res.	10	47				Month	to-Date	to-Date
U. San Leandro Res.	0	53				<u>Today</u>	<u>to-Date</u>	<u>Total</u>
<u>TOTAL</u>					USL WTP	0	2.26	12.12
<u>REMARKS</u>					Orinda WTP	0	4.14	17.37
WID Canal Diversion = 0 cfs					Lafayette Reservoir	0	3.49	12.12
Mokelumne River below WID = 1,473 cfs					Walnut Creek WTP	0	3.39	12.91
					Camp Pardee	0	2.39	11.69
					Salt Springs P.H.	0	5.93	24.77
					<u>CAPLES LAKE (7.830 FT) DATA</u>			
PG&E data as of 4:00 pm previous date.					Today	Average		
All other data as of midnight.					Snow Depth	38 Inches	55 Inches	
WTP capacities are sustainable rates.					Water Content	10.1 Inches	17.3 Inches	

EAST BAY MUNICIPAL UTILITY DISTRICT