

Central Reservoir Replacement Project



Community Meeting #2
February 13, 2018

Project Team



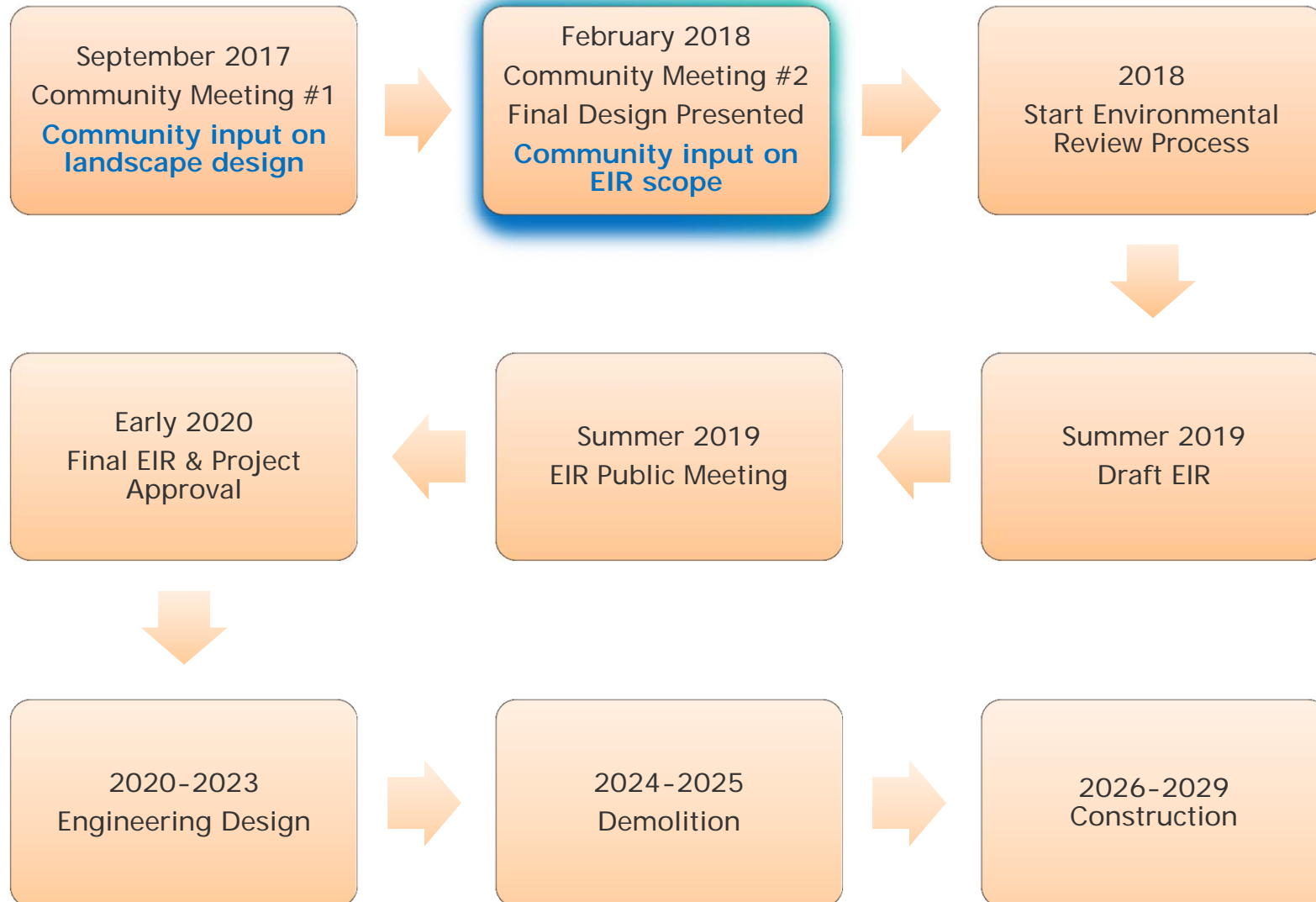
- EBMUD
 - David Rehnstrom, P.E., Division Manager
 - Bill Maggiore, P.E., Senior Engineer
 - Aaron Hope, P.E., Project Manager
 - Laura Luong, Community Affairs
- Consultants
 - ESA, Specialty CEQA Consultants
 - Dillingham Associates, Landscape Architecture
 - Muller & Caulfield, Architecture

Agenda

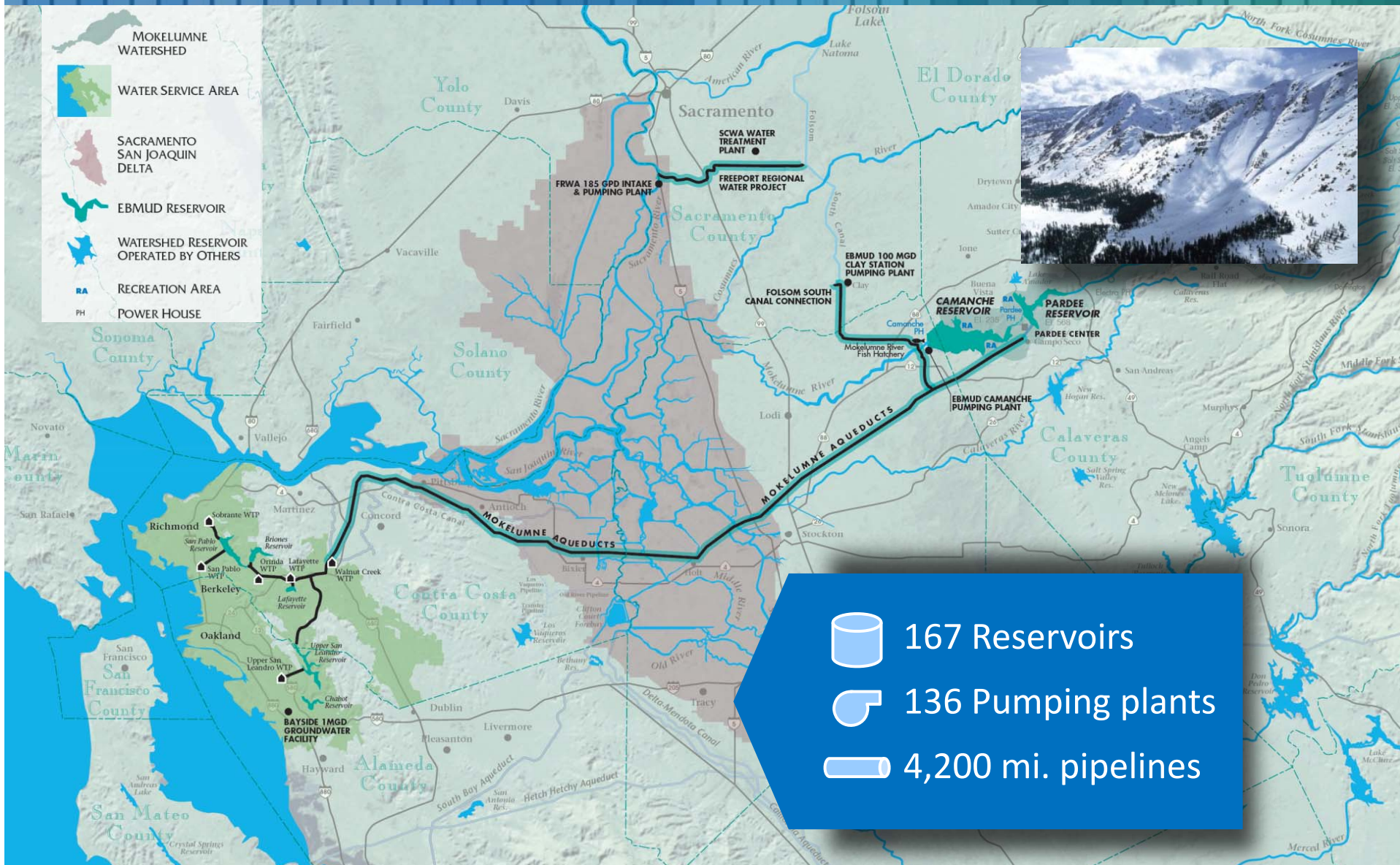


- EBMUD Background
- Schedule
- Project Purpose & Need
- Site Plan
- Landscape Design
- Visual Simulations
- Environmental Review
- Q & A

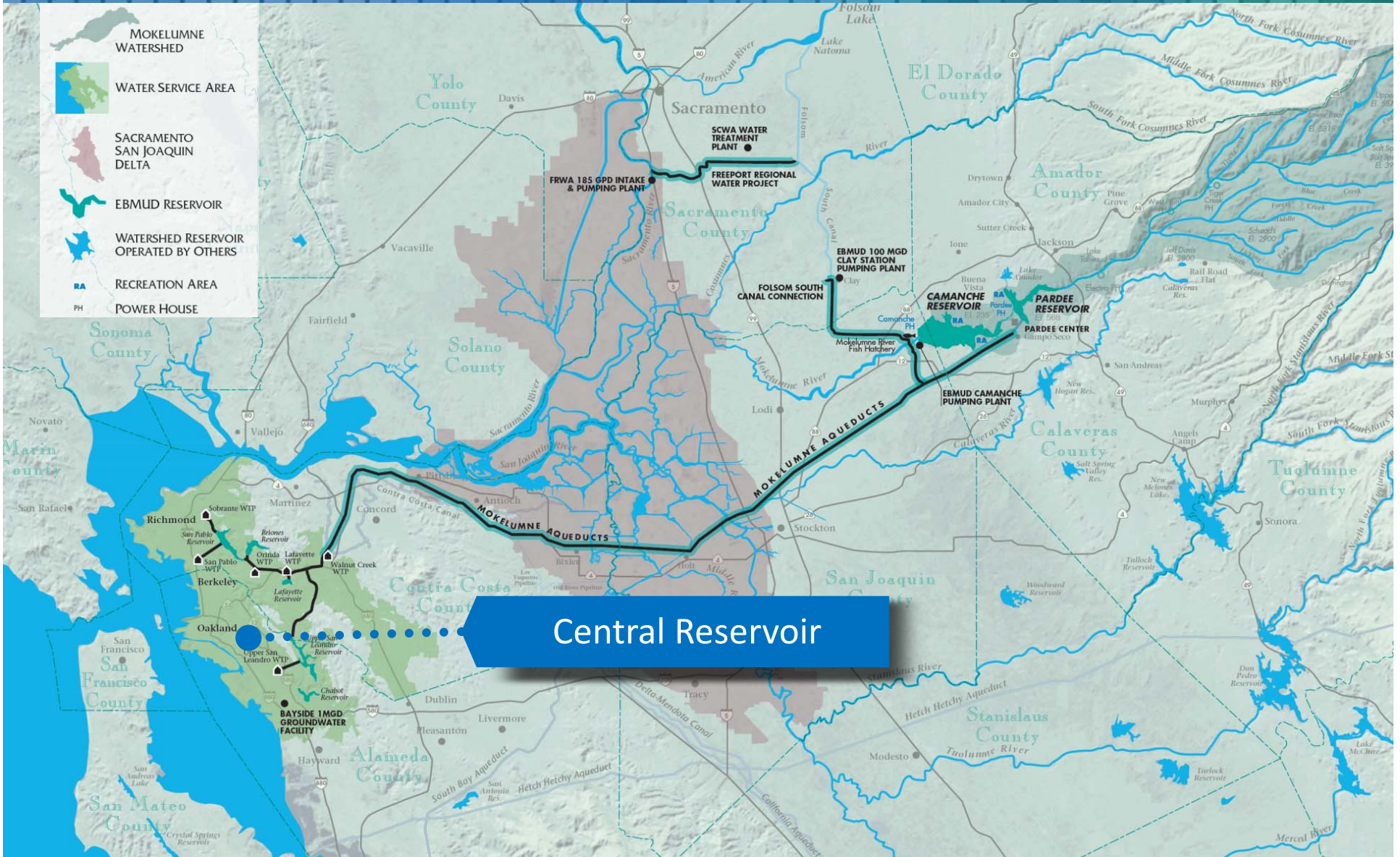
Central Reservoir Replacement Schedule



EBMUD Water System



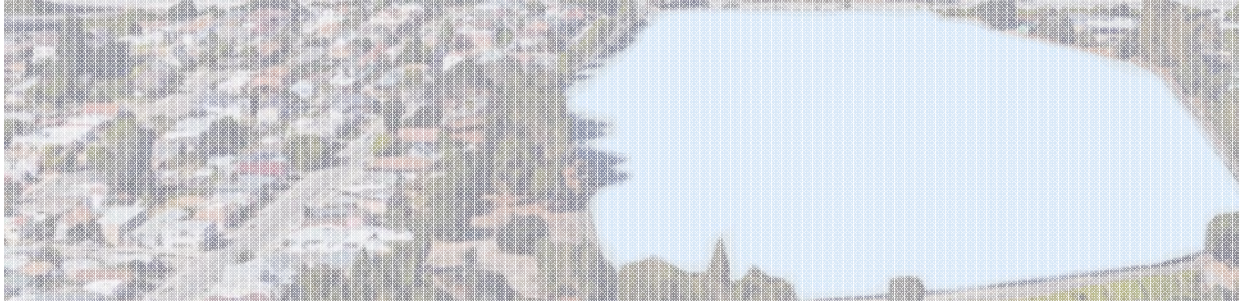
EBMUD Water System

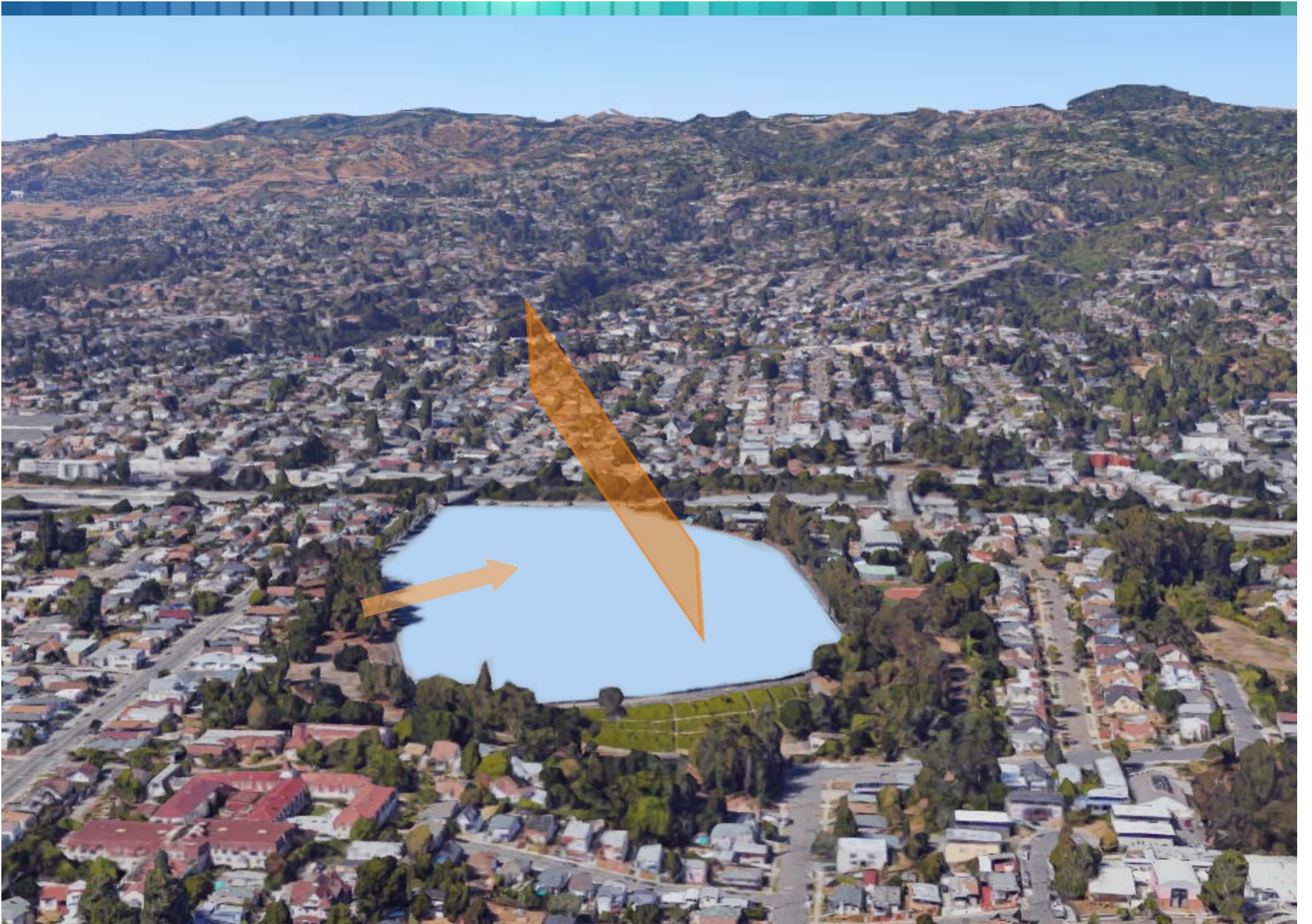


An aerial photograph of a city, likely Los Angeles, showing a large stadium (SoFi Stadium) and a complex highway interchange. The stadium is a large, oval-shaped structure with a white roof. The highway interchange is a multi-level structure with several lanes of traffic. The surrounding area is densely populated with residential and commercial buildings. The text "Project Purpose and Need" is overlaid on the image in a bold, black font.

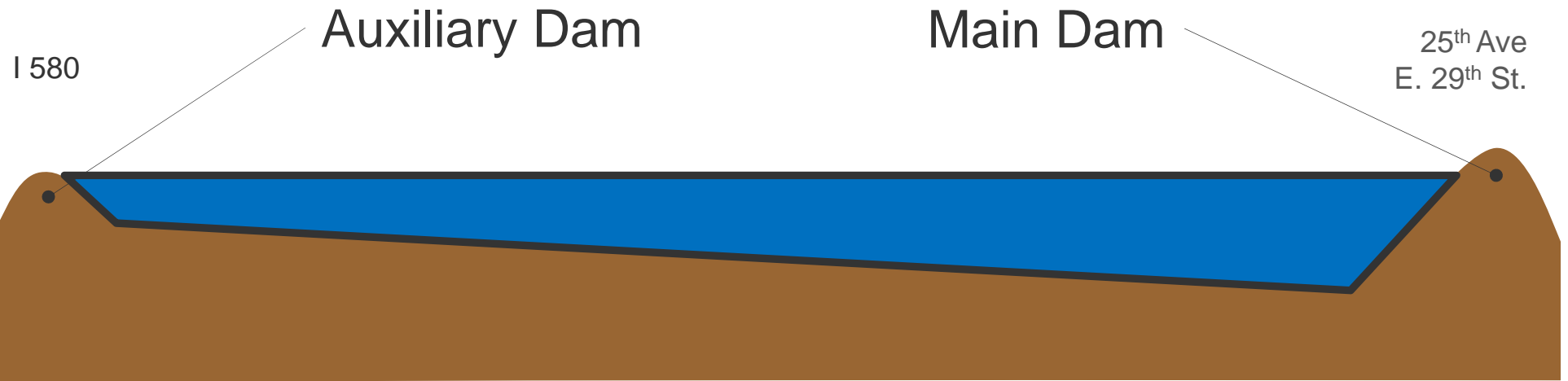
Project Purpose and Need

- EBMUD's largest distribution reservoir
- 153 Million Gallons
- 27 acre site
- Provides emergency and operational storage to about 52,000 of the District's 382,000 meters
- Open cut reservoir will be replaced with three 17 million gallon reservoirs

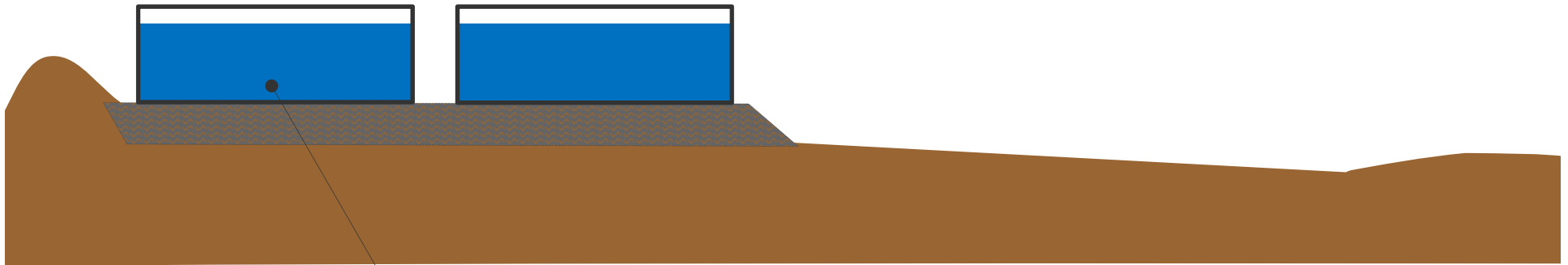




Existing Cross Section of Central Reservoir



Existing Cross Section of Central Reservoir

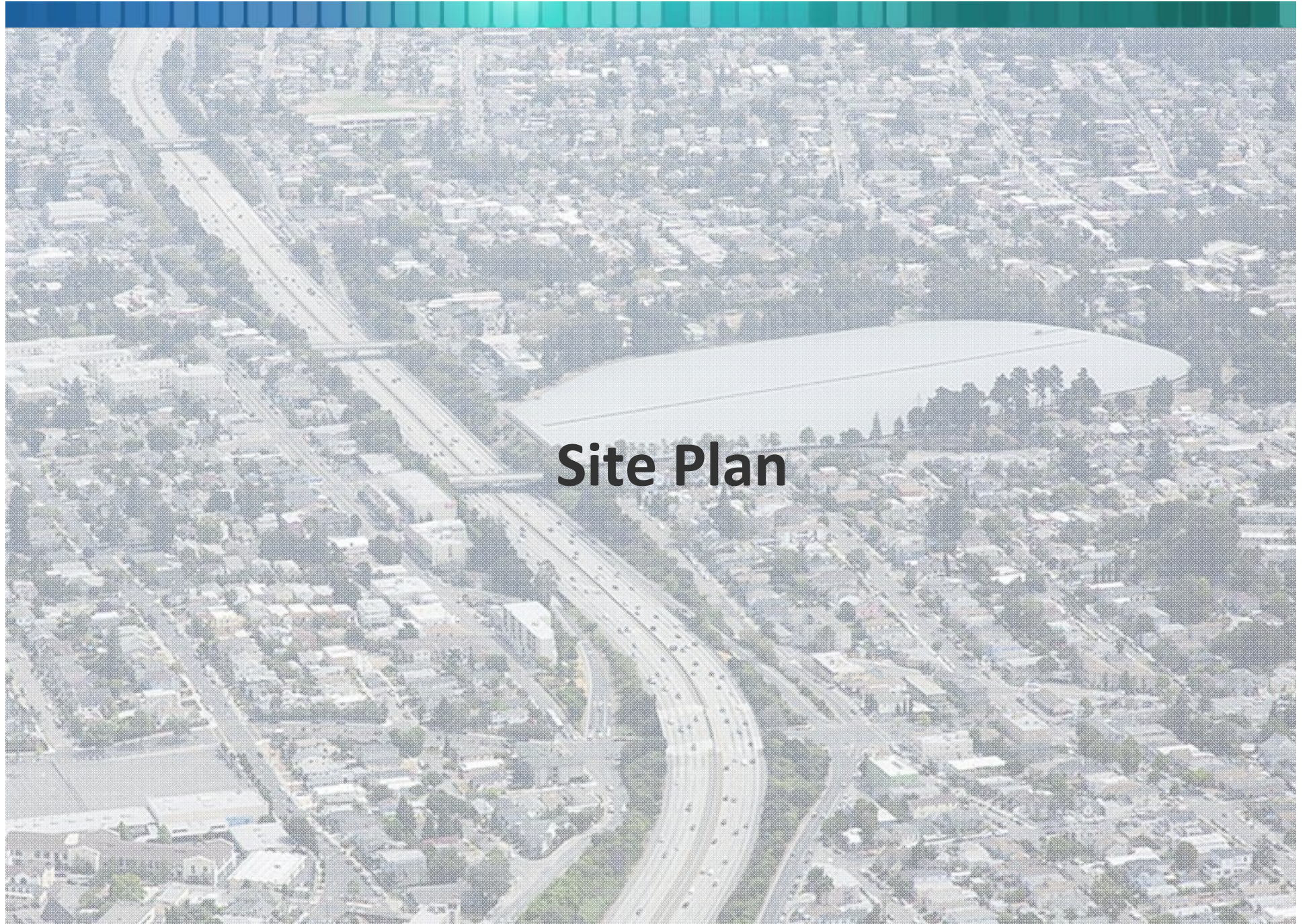


Three 17 million
gallon tanks
(third one not shown in
section)

Why are we Replacing the Reservoir?



- The reservoir has reached the end of its useful life
- Reduce water loss through the liner
- Resize to meet existing & future demands
- Improve water distribution system

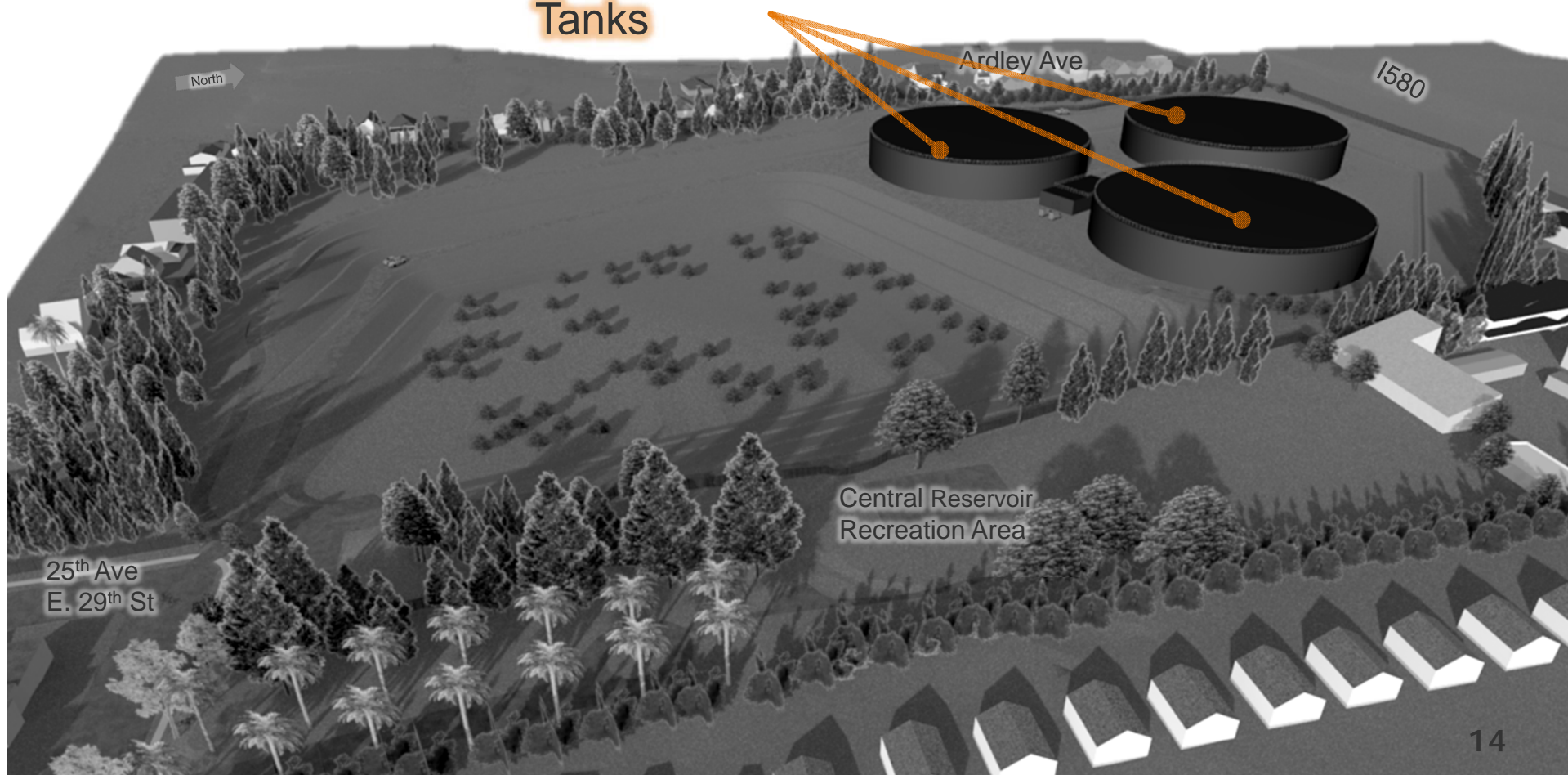


Site Plan

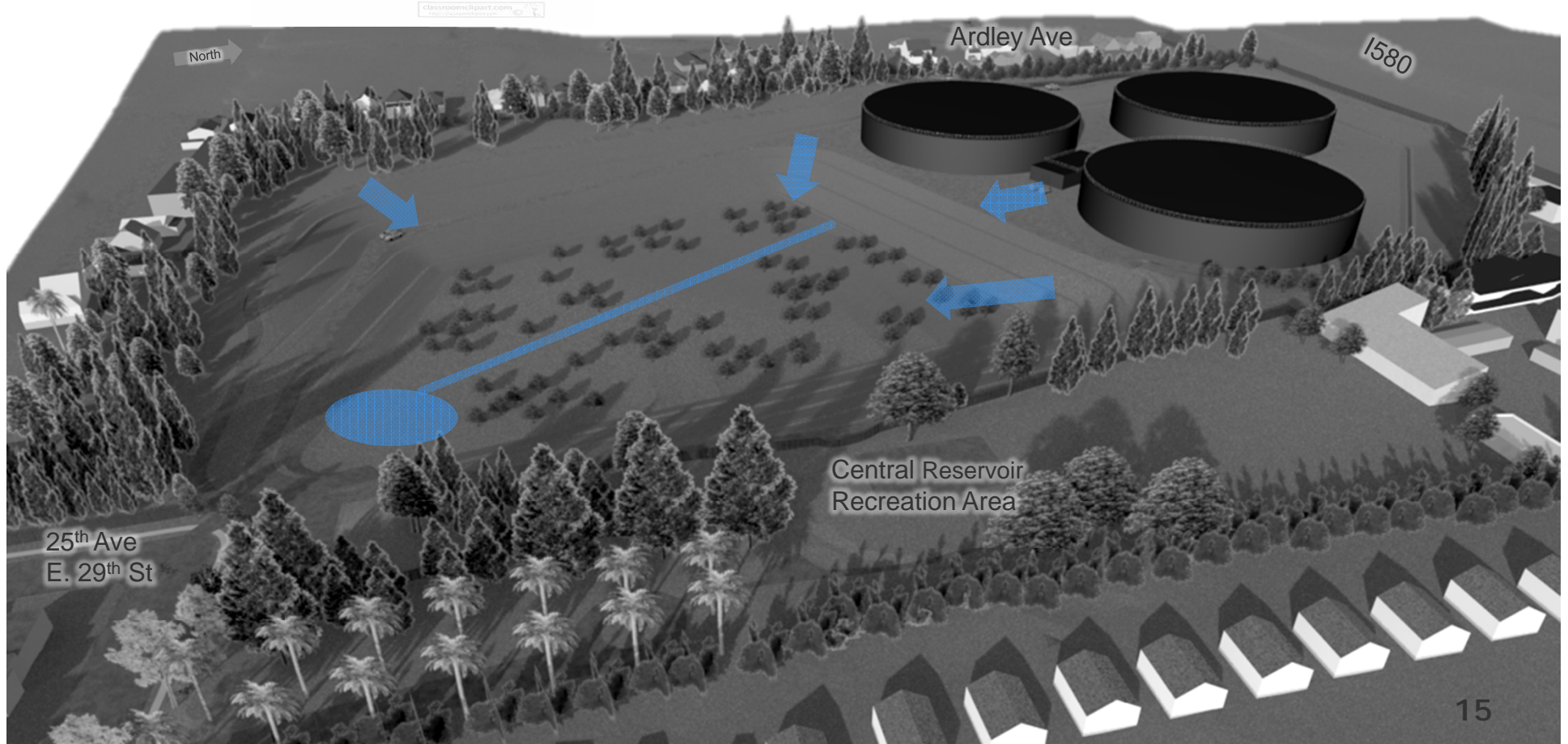
Conceptual Site Plan



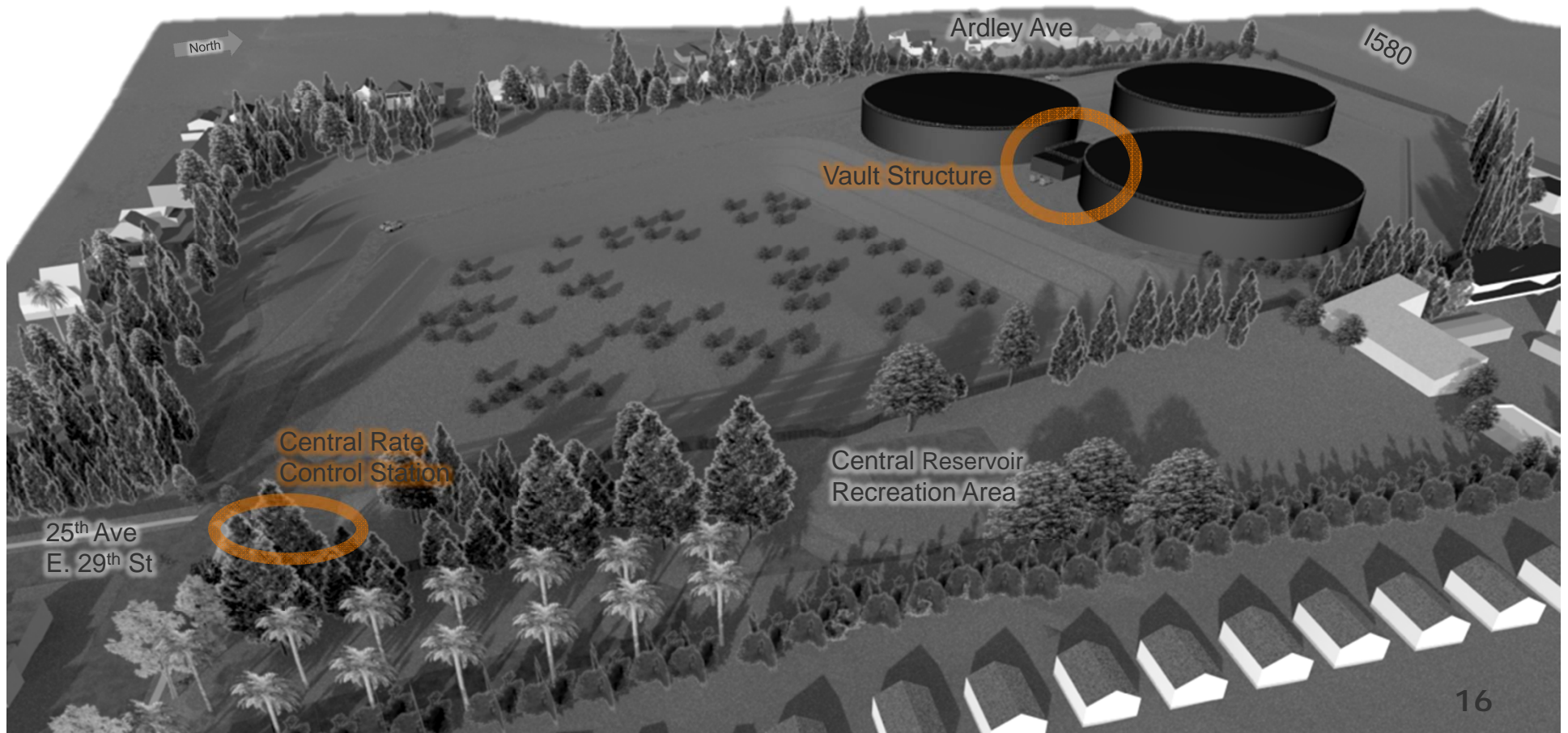
Three 17 Million
Gallon Concrete
Tanks



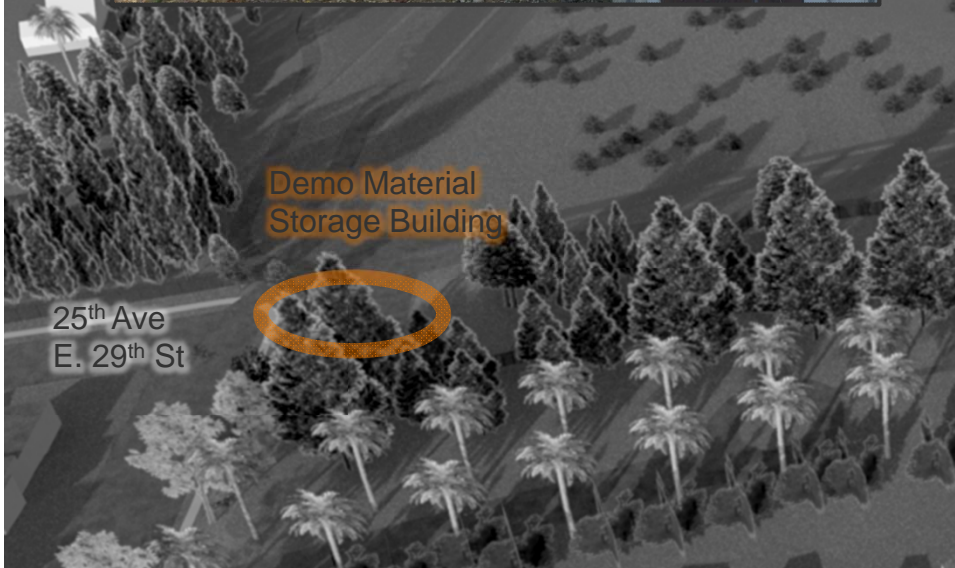
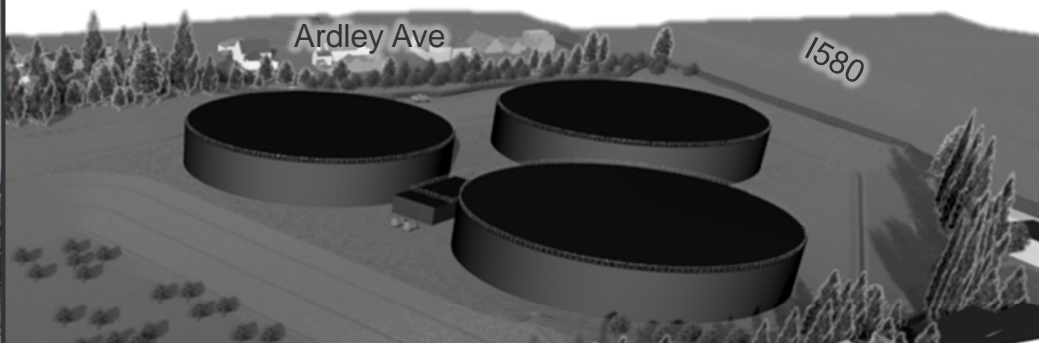
Conceptual Site Plan



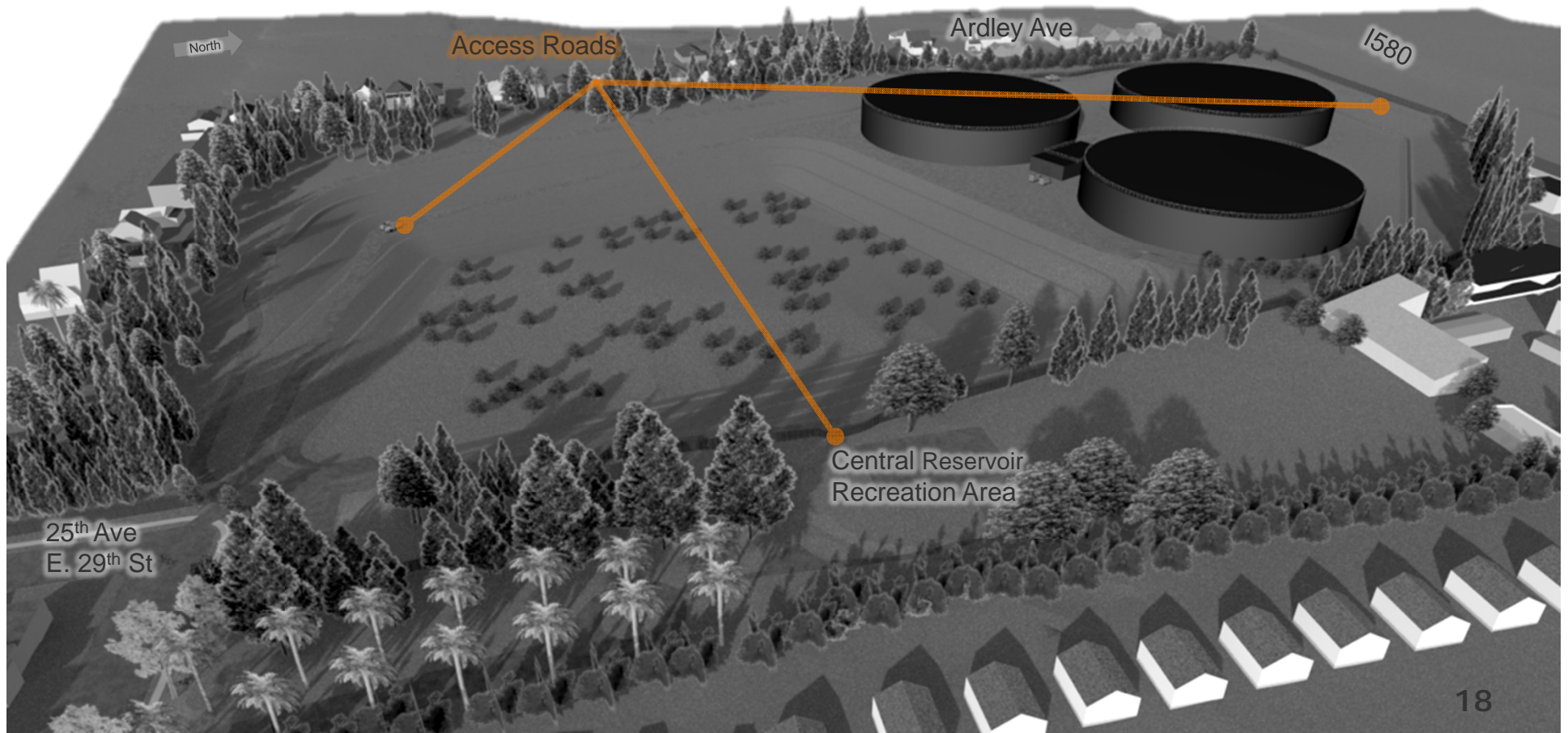
Conceptual Site Plan



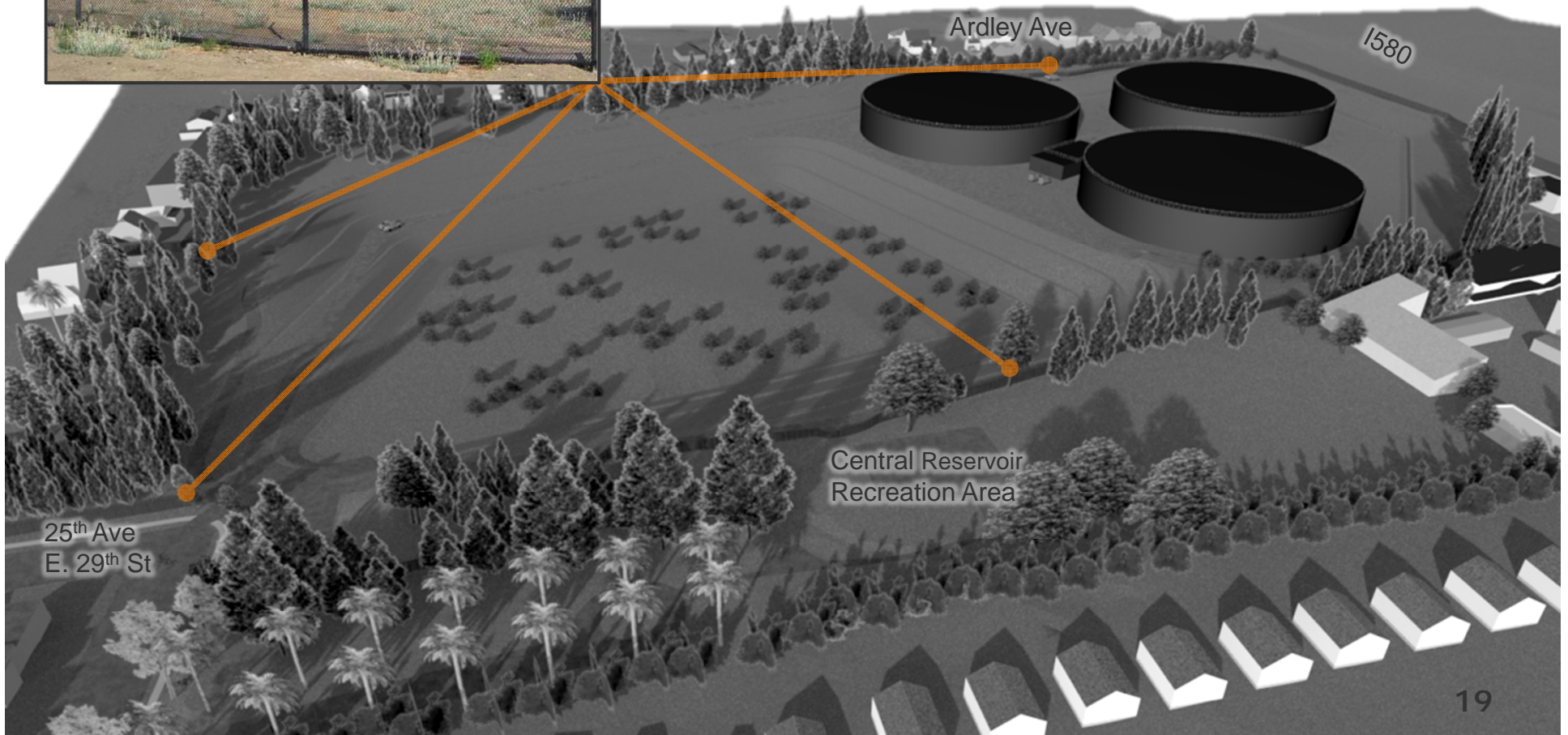
Conceptual Site Plan

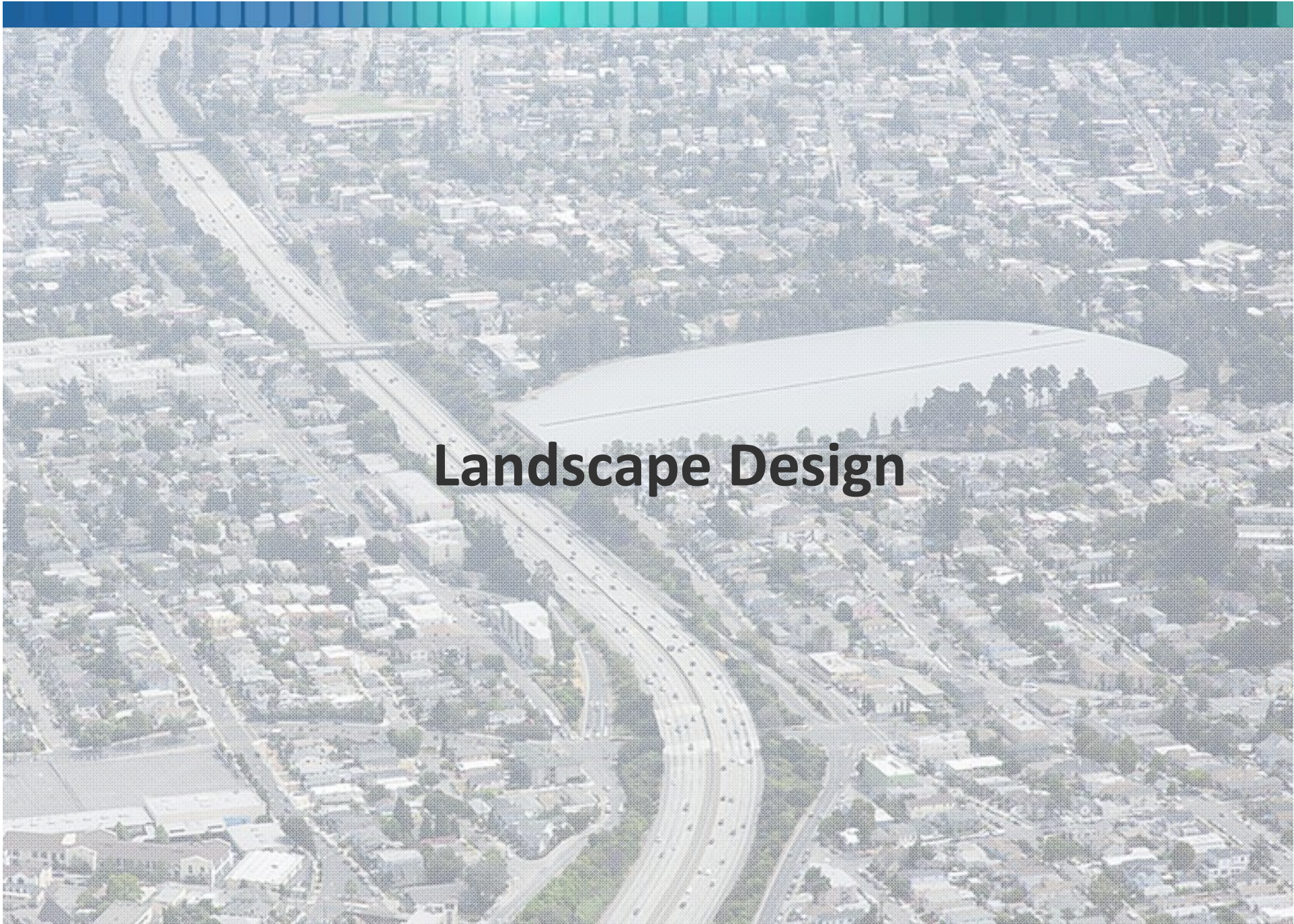


Conceptual Site Plan



Conceptual Site Plan





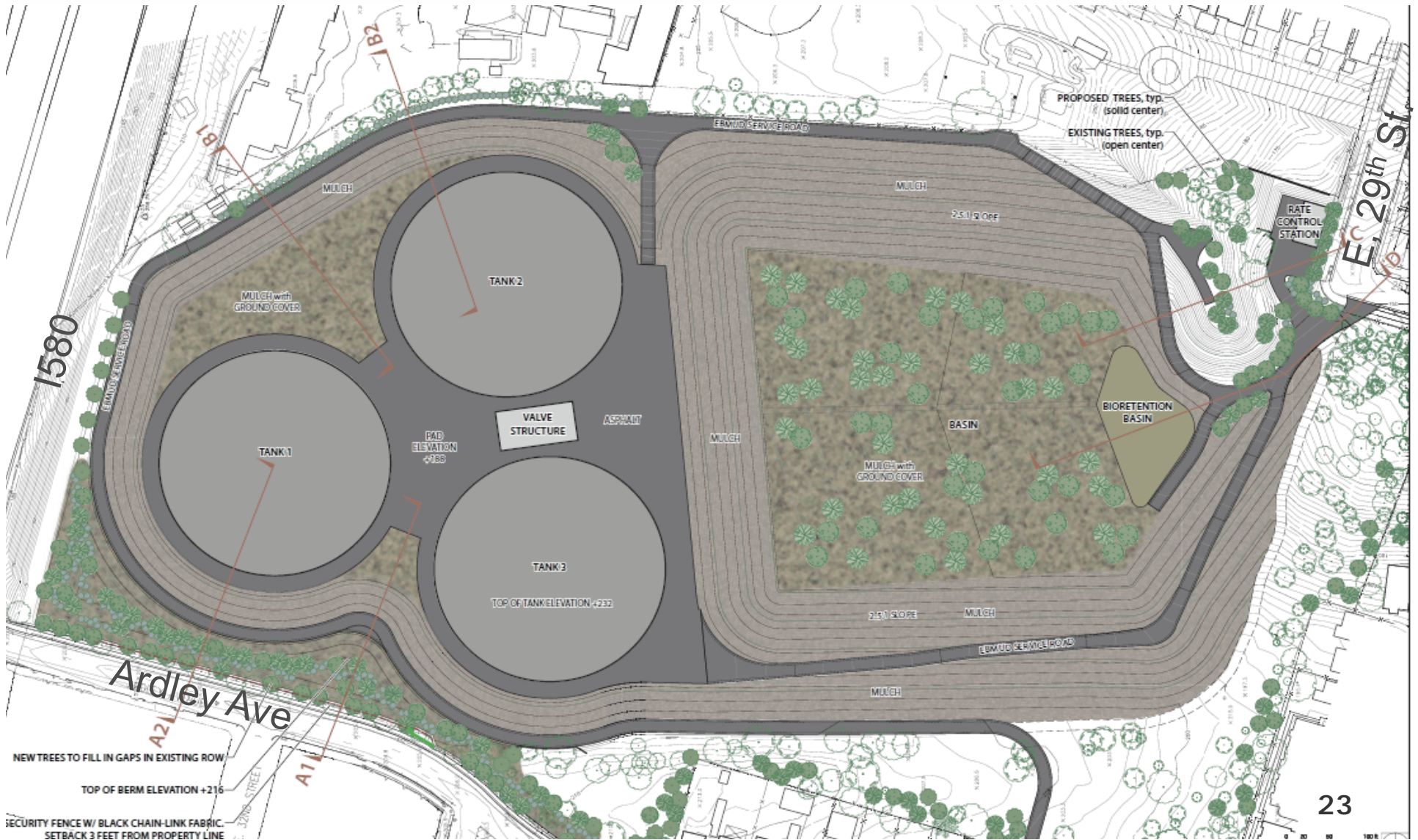
Landscape Design

Comments on September 2017 Conceptual Designs

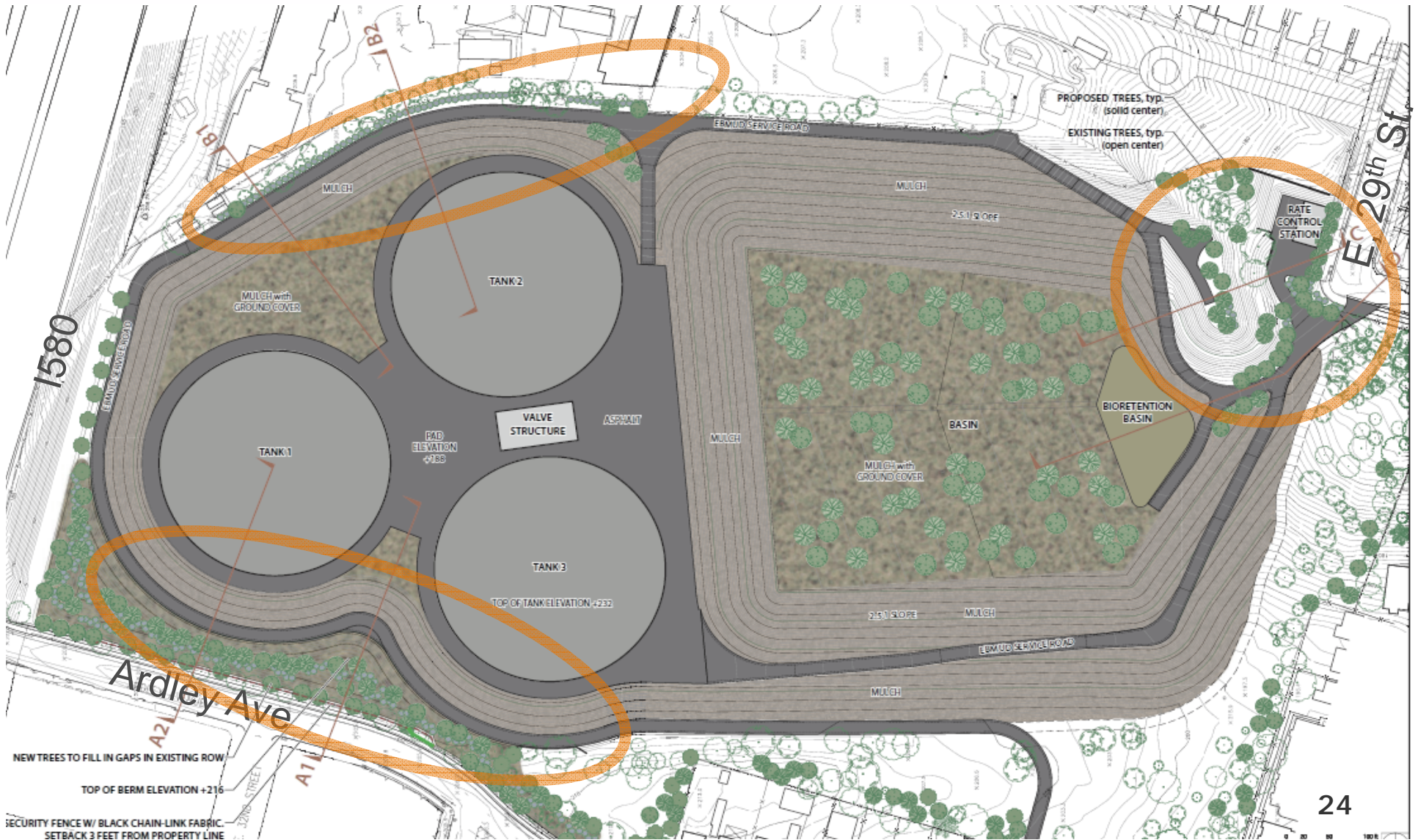


- Improve screening
- Reduce distance between fence and sidewalk
- Murals
- Access through the site

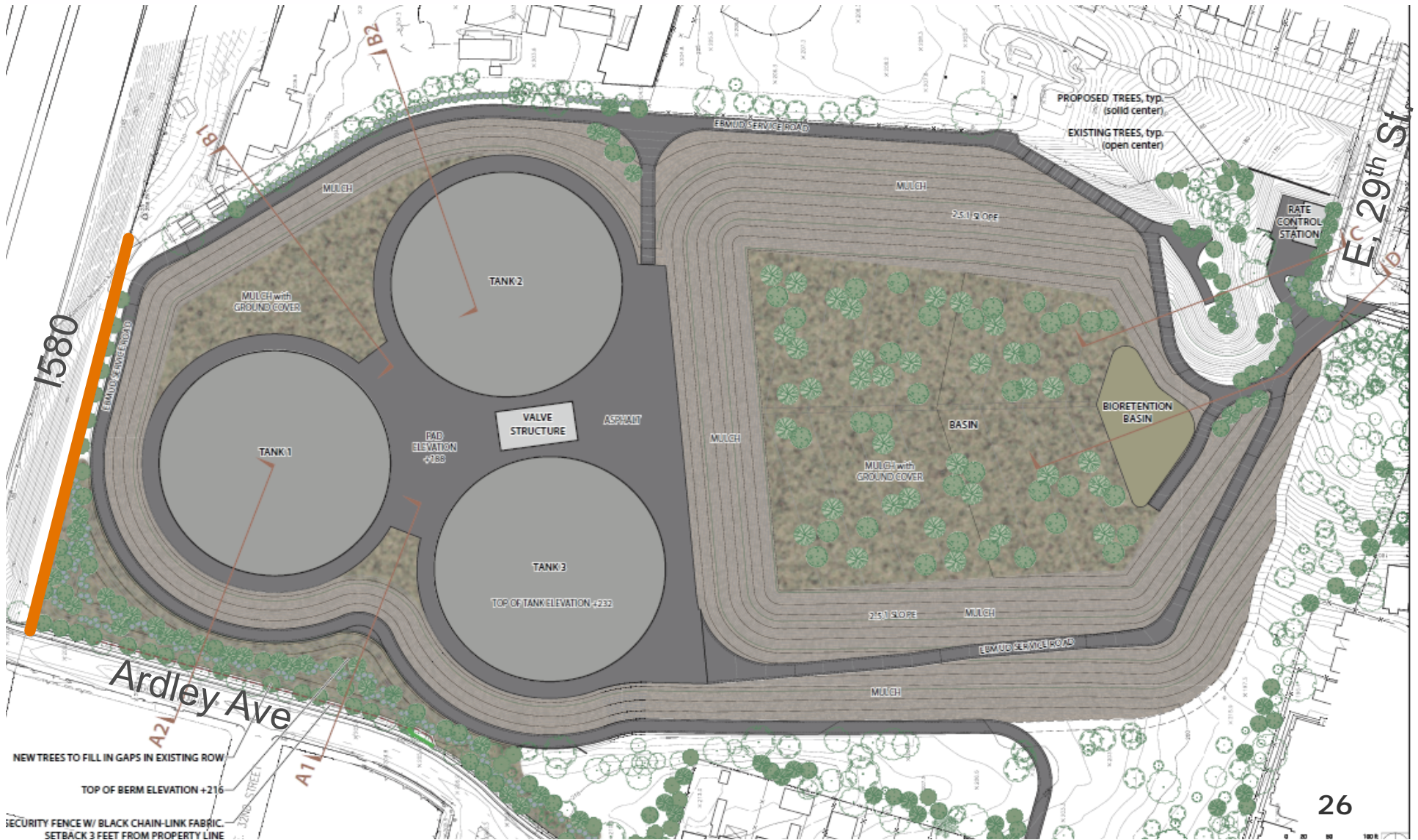
Final Site Plan



Final Site Plan



Final Site Plan



An aerial photograph of a city, likely Los Angeles, showing a complex highway interchange with multiple lanes and overpasses. A large, oval-shaped stadium is visible in the center-right of the image. The surrounding area is densely packed with residential and commercial buildings, trees, and parking lots. The text "Visual Simulations" is overlaid in the center of the image.

Visual Simulations



Viewpoint 1

Viewpoint 2

Viewpoint 3

Viewpoint 5

Viewpoint 4



Viewpoint 1

Viewpoint 1: Ardley Near Bridge



September Meeting 10-Year Simulation



ENVIRONMENTAL VISION

New 10-Year Simulation



New 5-Year Simulation





Viewpoint 2 

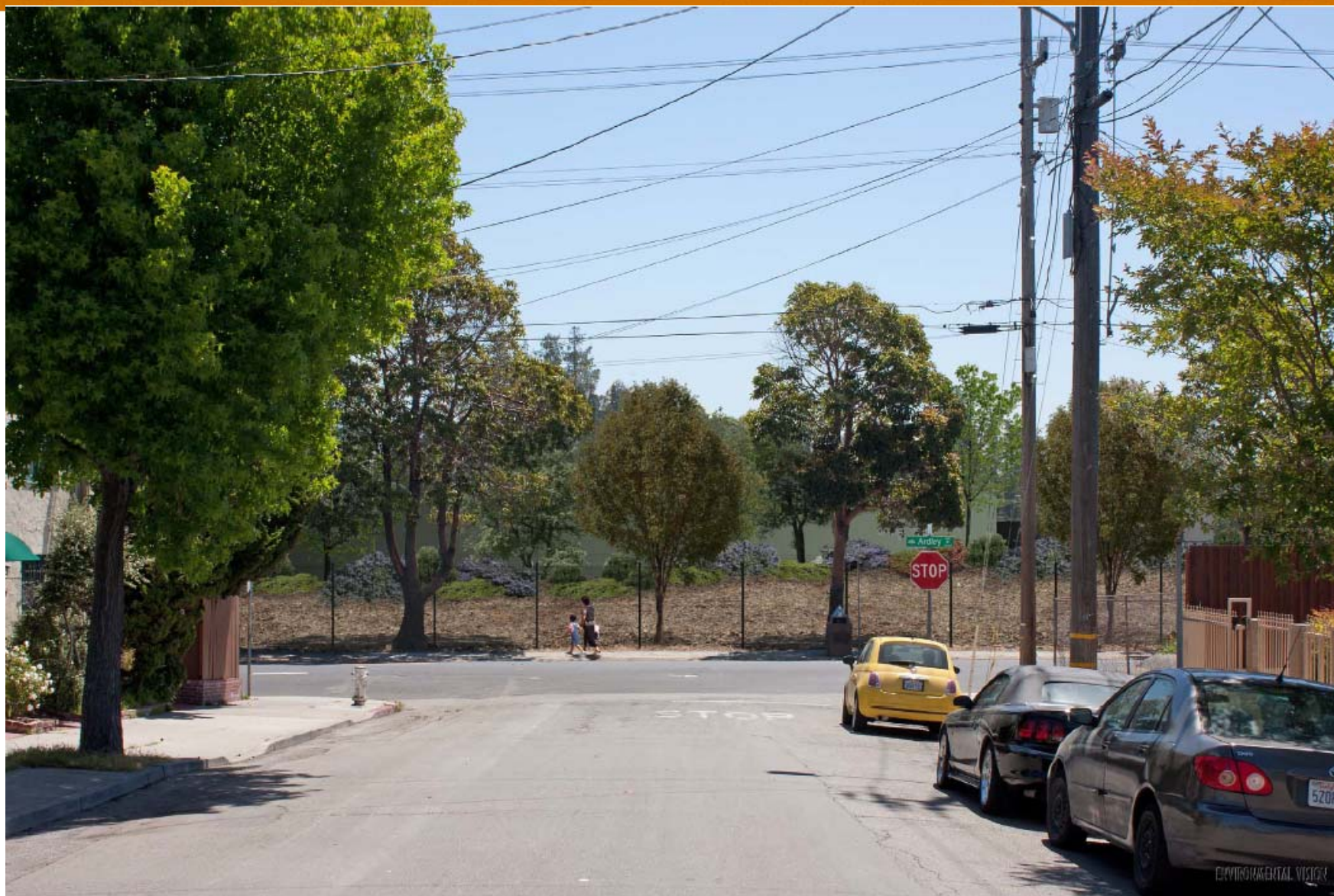
Viewpoint 2: Ardley at E. 32nd St



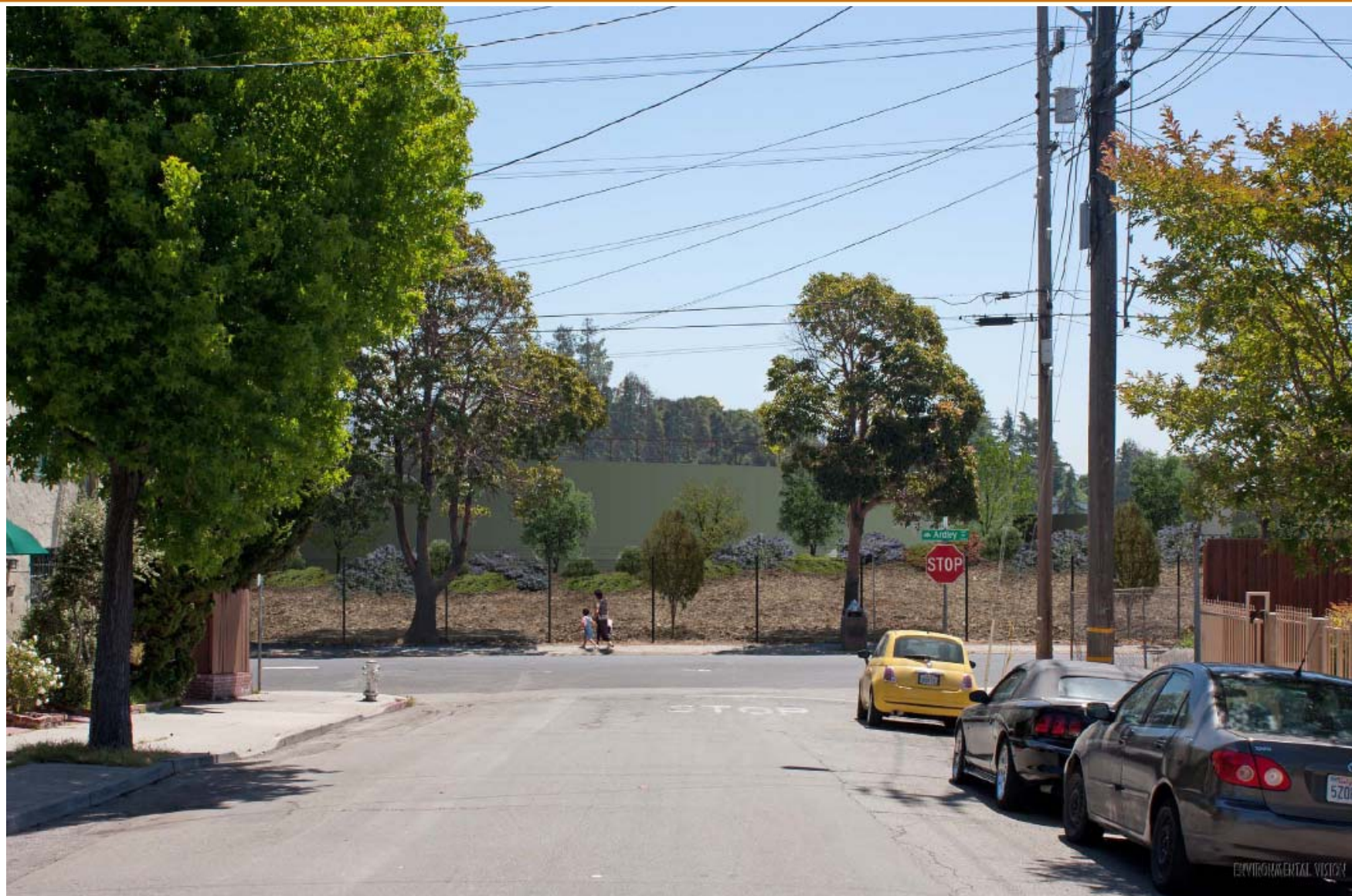
September Meeting 10-Year Simulation



New 10-Year Simulation



New 5-Year Simulation





Viewpoint 3

Viewpoint 3: Ardley & 23rd Ave



September Meeting 10-Year Simulation



New 10-Year Simulation



New 5-Year Simulation





Viewpoint 4

Viewpoint 4: 25th Ave & E. 29th St.



September Meeting 10-Year Simulation



New 10-Year Simulation



New 5-Year Simulation





← Viewpoint 5

Viewpoint 5: Redwood Day School



September Meeting Simulation



New Simulation



Plant Palette - Trees



Big-leaf Maple



California Buckeye



Elderberry



Ginkgo



Canyon Live Oak



Valley Oak



Coast Live Oak

Plant Palette - Shrubs



Edmunds Manzanita



Wayside Manzanita



Manzanita



Pajaro Manzanita



McMinn Manzanita



Joyce Coulter Ceanothus



Skylark Ceanothus

An aerial photograph of a city, likely Los Angeles, showing a large lake in the center-right, a multi-lane highway interchange in the foreground, and a dense residential area with many houses and trees. The text "Next Steps" is overlaid in the center of the image.

Next Steps

What is an EIR?



- Purpose:
 - To inform the public of the environmental consequences of projects
- EIR is required:
 - When there is potential that a project may have significant impacts

EIR Analysis of Impacts



Environmental Resource Category	Less than Significant	Less than Significant with Mitigation	Significant and Unavoidable
Aesthetics			
Air Quality			
Biological	<i>To be analyzed in the EIR</i>		
Cultural			
Geology			
Greenhouse Gases			
Hazards			
Hydrology			
Noise			
Traffic			

Central Reservoir Next Steps



- Start Environmental Review Process
 - Draft EIR Summer 2019
 - EIR Public Meeting
- Final EIR & Project Approval
 - Early 2020
- Engineering Design
 - 2020-2023
- Demolition & Construction
 - 2024-2029

Thank You



For comments or questions

centralreservoir@ebmud.com

www.ebmud.com/central

Laura Luong, EBMUD
375 11th Street,
MS 802, Oakland, CA 94607