

- NOTES:
1. TWO INCH IRON PIPE & BRASS PLATE SET AUG. 1966 BY E.B.M.U.D. SURVEY.
 2. BEARINGS SHOWN ARE BASED ON THE BOUNDARY LINE BETWEEN OAKLAND TOWNSHIP AND BROOKLIN TOWNSHIP DESIGNATED AS BEARING N 38° 52' E AND ARE IN AGREEMENT WITH FILED SUBD. MAPS OF MONTCLAIR ACRES (7 M 86-7) & MONTCLAIR ESTATE (3 M 43-4).
 3. BEARINGS AND DISTANCES SHOWN IN PARENTHESES () ARE RECORD.
 4. MONUMENTS AND POINTS SET OR RECOVERED AUG. 1976

- REFERENCE:
1. FIELD BOOK 2294
 2. DRAWINGS NO. 805-R, NO. DH 537-1-A
 3. TRACT MAPS A3, 43-4 A7, 86-7

PROP. NO. 29 - 1.916 AC.
PROP. NO. 29-B .055 AC.
PROP. NO. 29-A .033 AC.
TOT. AREA 2.004 AC.

PROP. NO. 29-A
JUL. 19, 1923 492 OR 154
Remaining Portion after
Sale No. 686

SALE NO. 686
RES. NO. 1803
APR. 17, 1957
0.957 AC.

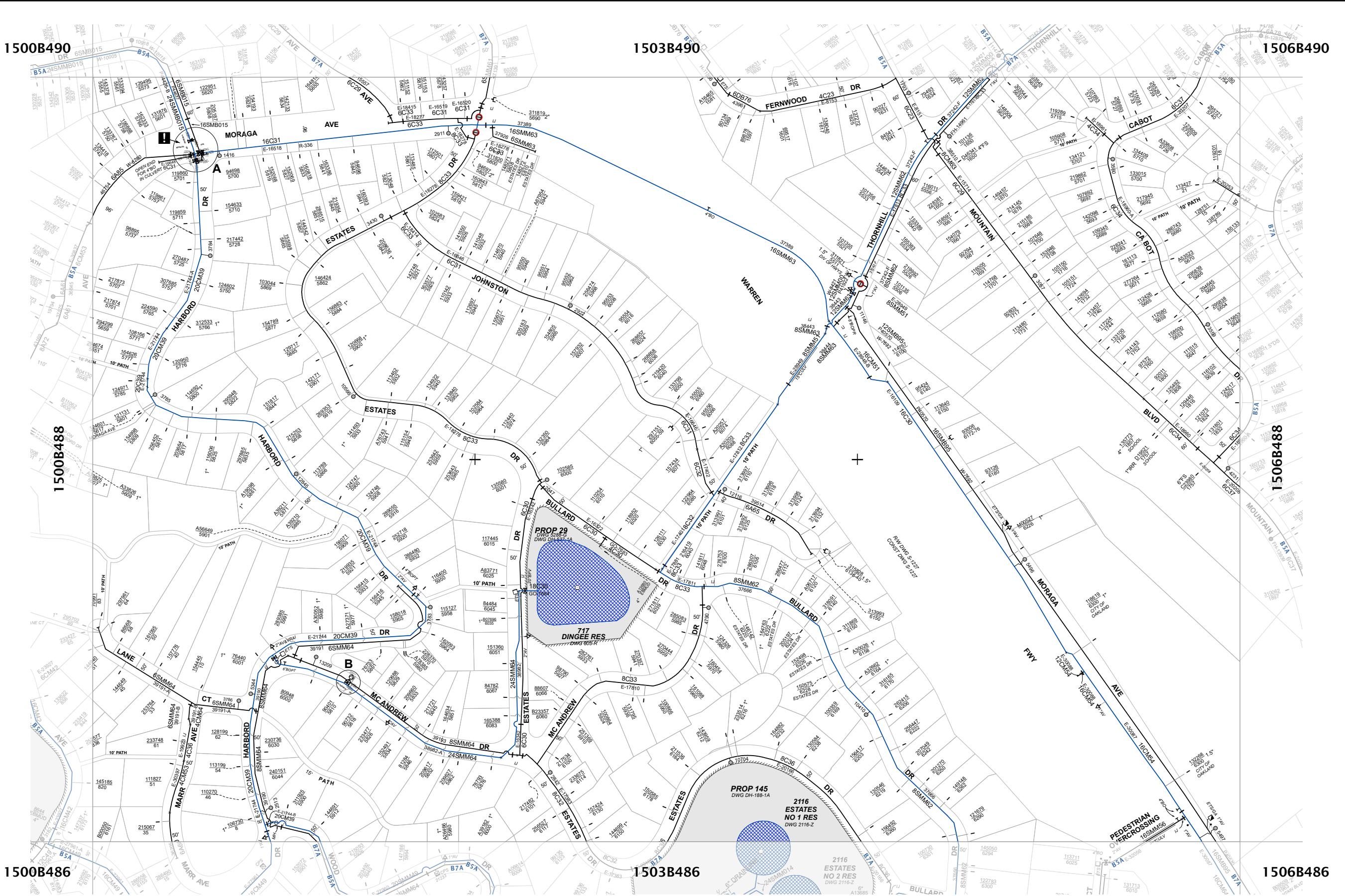
APPROVED *J. H. Harnes*
CHIEF ENGINEER R.C.E. NO. 14167

DRAWN BY COOPER		EAST BAY MUNICIPAL UTILITY DISTRICT OAKLAND, CALIFORNIA	
CHECKED BY A. MARTINEZ JCD		DINGEE RESERVOIR 4.7 M.G. OPEN CUT	
SURVEYOR J.R. Goldman		PROPERTY OAKLAND	
MANAGER FIELD ENG. W.R. McLean		STRUCTURE OR ZONE DESIGNATION 717 B5A	
MANAGER DESIGN ENGR. R. J. Johnson		SCALE 1" = 40'	
MANAGER WATER PROD. & DIST. W. J. Tarkenton		DATE 6 DEC 67	

NO.	DATE	REVISION	BY	APP.
1	Feb 78	Added Note 4	tg	

5288-G

THIS MAP IS TO BE USED FOR GENERAL REFERENCE PURPOSES ONLY. THE DATA WAS NOT COMPILED, NOR INTENDED TO BE USED, FOR ENGINEERING OR CONSTRUCTION PURPOSES. THE DATA IS FOR INFORMATIONAL PURPOSES ONLY. THE DATA IS NOT TO BE USED FOR ANY PURPOSES OTHER THAN GENERAL REFERENCE. THE DATA IS NOT TO BE USED FOR ANY PURPOSES OTHER THAN GENERAL REFERENCE. THE DATA IS NOT TO BE USED FOR ANY PURPOSES OTHER THAN GENERAL REFERENCE.



NOTE
PIPES WITH IN-SERVICE YEAR BEFORE 2009 ARE REPRESENTED USING THE LAST TWO DIGITS OF IN-SERVICE YEAR IN PIPE DESIGNATION; PIPES WITH IN-SERVICE YEAR AFTER 2009 ARE REPRESENTED USING THE LAST THREE DIGITS OF IN-SERVICE YEAR.

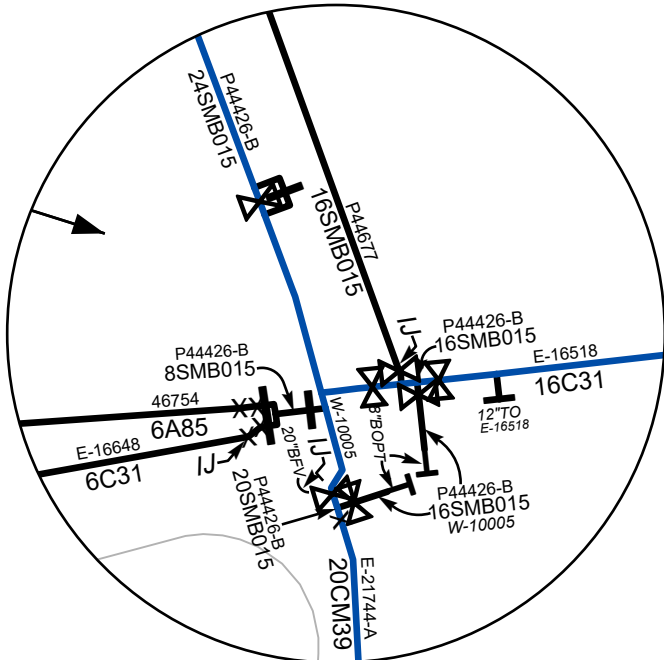
PIPES WITH EXTENSION NUMBERS IN THE ND-XXXXX SERIES ARE 'NO DATA' PIPES. NO DATA OR DRAWINGS EXIST FOR THESE PIPES.

CITY	OAKLAND
COUNTY	ALAMEDA
USGS QUAD	OAKLAND EAST

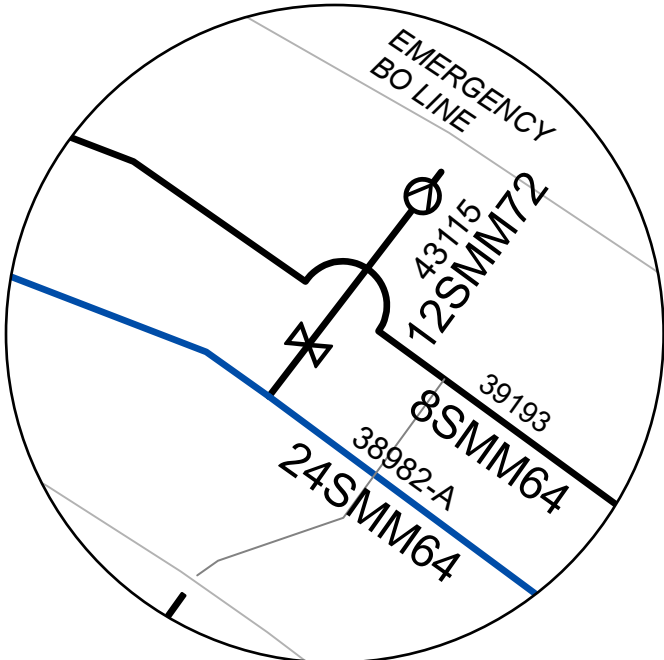
TYPE	DESIGNATION	STRUCTURE NAME	FL ELEV	CAP IN MG

EAST BAY MUNICIPAL UTILITY DISTRICT					PIPELINE MAIN PRESSURE ZONE	FL ELEV	DATE ISSUED
					B5A DINGEE B7A JOAQUIN MILLER	500 - 675 675 - 875	7/31/2023

1503B488



DETAIL A



DETAIL B

THIS MAP IS TO BE USED FOR GENERAL REFERENCE PURPOSES ONLY. THE DATA WAS NOT COMPILED, NOR INTENDED TO BE USED FOR ENGINEERING OR DESIGN PURPOSES. EBMUD DOES NOT WARRANT THE ACCURACY OF THE DATA OR THE LOCATION OF THE UTILITIES SHOWN. EBMUD IS NOT RESPONSIBLE FOR ANY ERRORS OR OMISSIONS THAT MAY BE CONTAINED HEREIN. IF DISCREPANCIES ARE FOUND, PLEASE NOTIFY THE EBMUD MAPPING SERVICES UNIT.

NOTE
PIPES WITH IN-SERVICE YEAR BEFORE 2009 ARE REPRESENTED USING THE LAST TWO DIGITS OF IN-SERVICE YEAR IN PIPE DESIGNATION; PIPES WITH IN-SERVICE YEAR AFTER 2009 ARE REPRESENTED USING THE LAST THREE DIGITS OF IN-SERVICE YEAR.

PIPES WITH EXTENSION NUMBERS IN THE ND-XXXXX SERIES ARE 'NO DATA' PIPES. NO DATA OR DRAWINGS EXIST FOR THESE PIPES.

EAST BAY MUNICIPAL UTILITY DISTRICT			
CITY	OAKLAND	DATE ISSUED	7/31/2023
COUNTY	ALAMEDA	1503B488	
USGS QUAD	OAKLAND EAST		

Scale: 1" = 50'

Undiv. Mt. or Hill Lds. of Rchos. of V & D Peralta (BK. 19 PG. 31)
Montclair Estates (BK. 3 PG. 43)
Montclair Acres (BK. 7 PG. 86)

