



Bayside Facility

Bayside Community Group

June 25, 2025

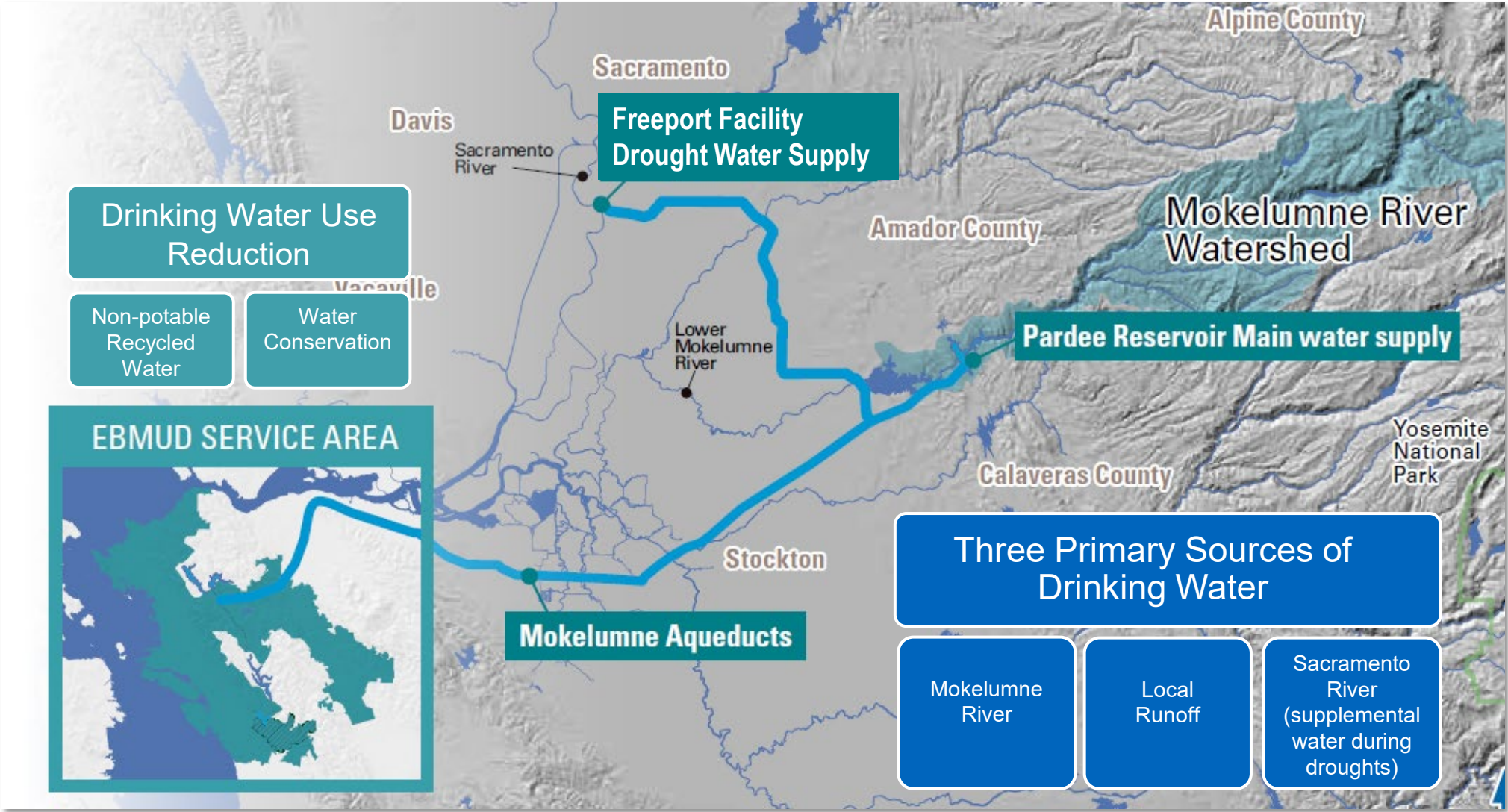
Meeting Goals and Objectives

- EBMUD committed to continued engagement with the Bayside Community Group
- Provide facts about the Bayside Facility and the status of the Bayside well demolition
- Listen to and address questions and concerns

EBMUD Water Supply



EBMUD Water Supply



Water Supply Challenges

Climate Change



Extreme Drought



Extreme Rainfall



Earthquakes



New Laws & Regulations



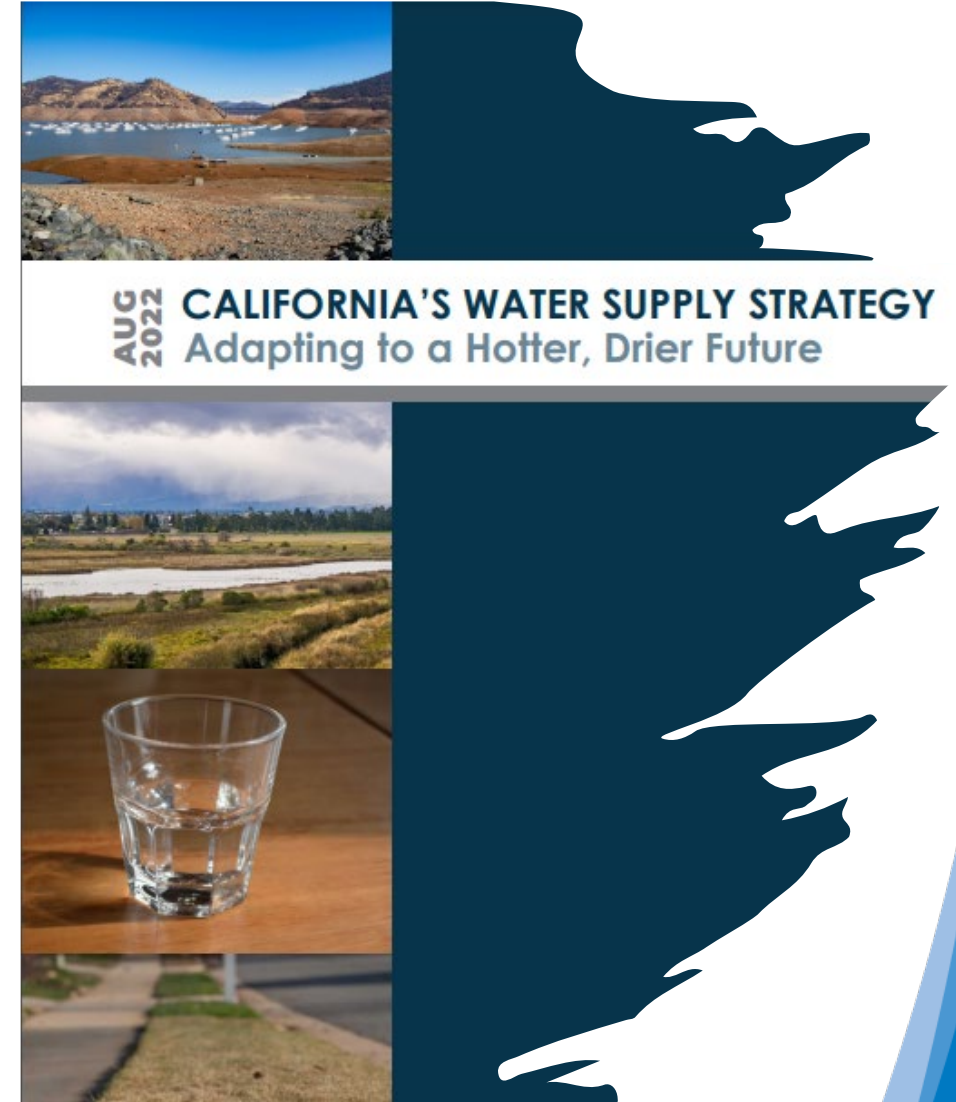
More Wildfire



EBMUD maintains a portfolio of supplemental water supply strategies to enhance resiliency to water supply challenges

California's Water Supply Strategy

- Governor's executive order for a comprehensive water resilience portfolio
- State's water supply strategy includes
 - Creating storage for up to 4 million acre-feet of water, including groundwater storage
 - Recycling at least 800,000 acre-feet of water per year by 2030
 - Conserving up 500,000 acre-feet of water



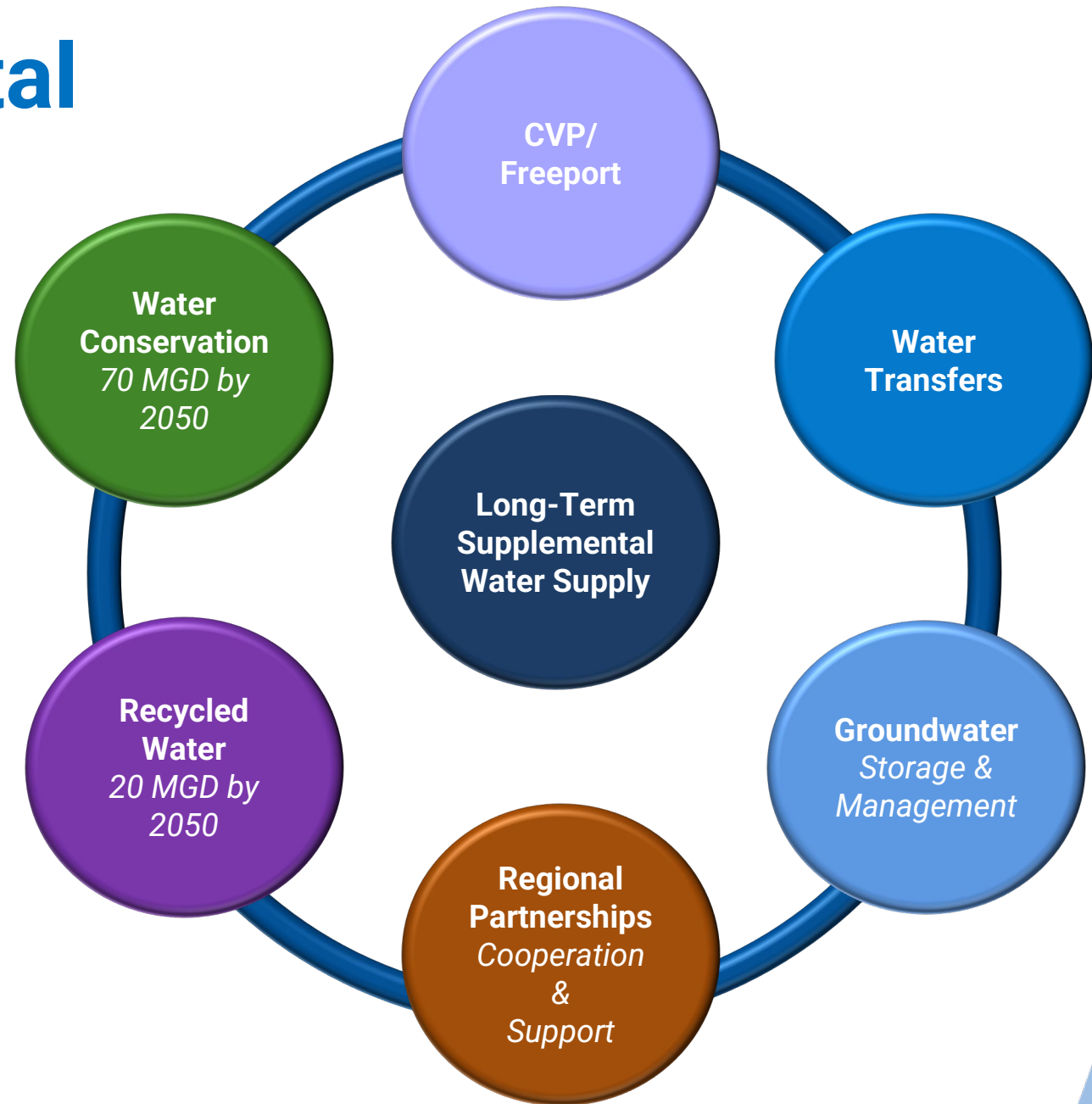
EBMUD Future Water Needs

- EBMUD plans for future water needs over the next 20 – 30 years
- After accounting for conservation, recycling, and 15% rationing, EBMUD forecasts that additional water is needed during a **third consecutive year of a drought**
- By 2050, the need for supplemental water supply is projected to range between 75 – 84 TAF in a third year of a drought
 - Amount of water needed for about 300,000 single family homes

EBMUD Supplemental Water Portfolio

Strategy

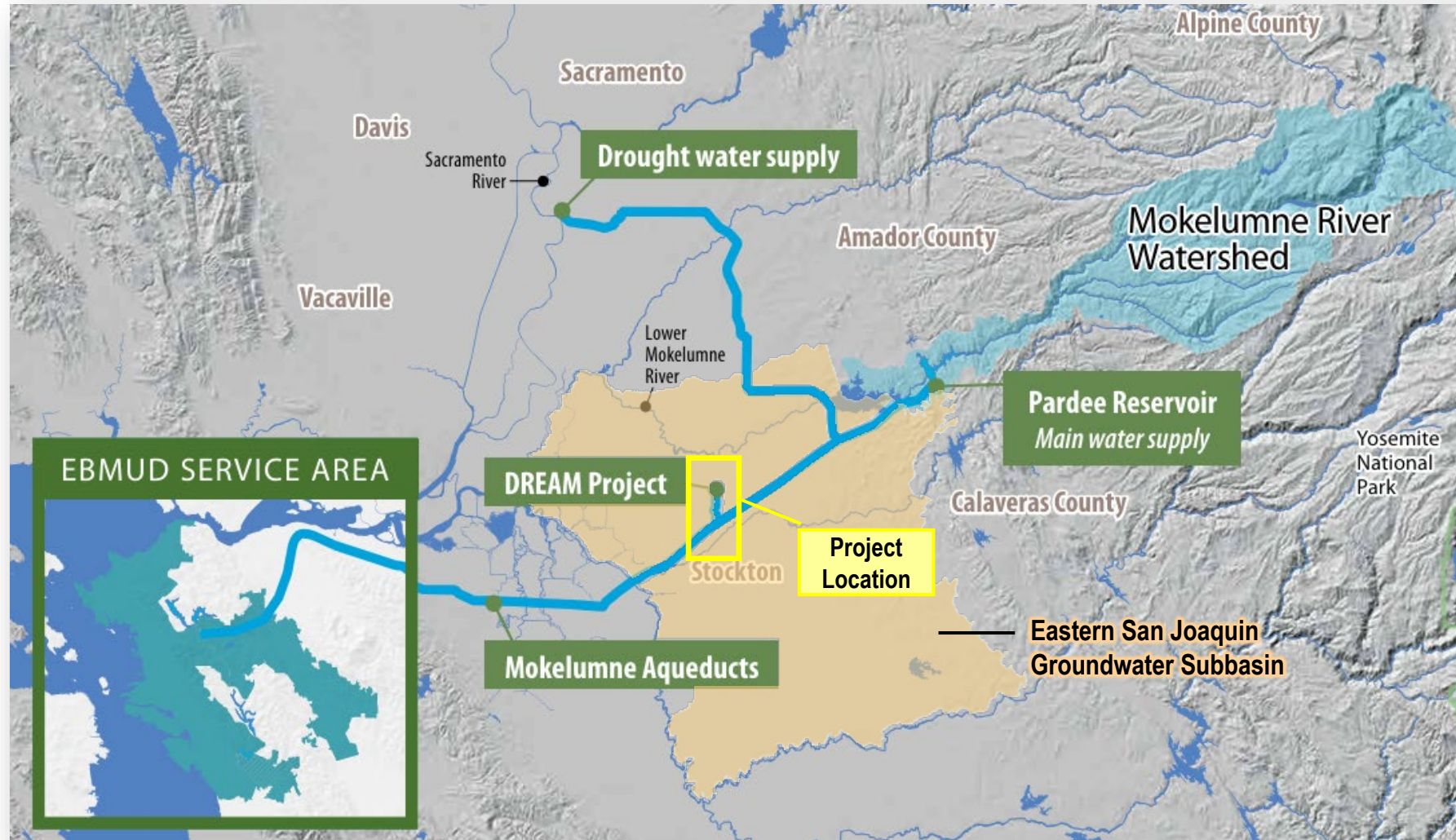
“Continue building a resilient and sustainable water supply through diversifying the water supply portfolio”



CVP: Central Valley Project

Groundwater Banking in San Joaquin County

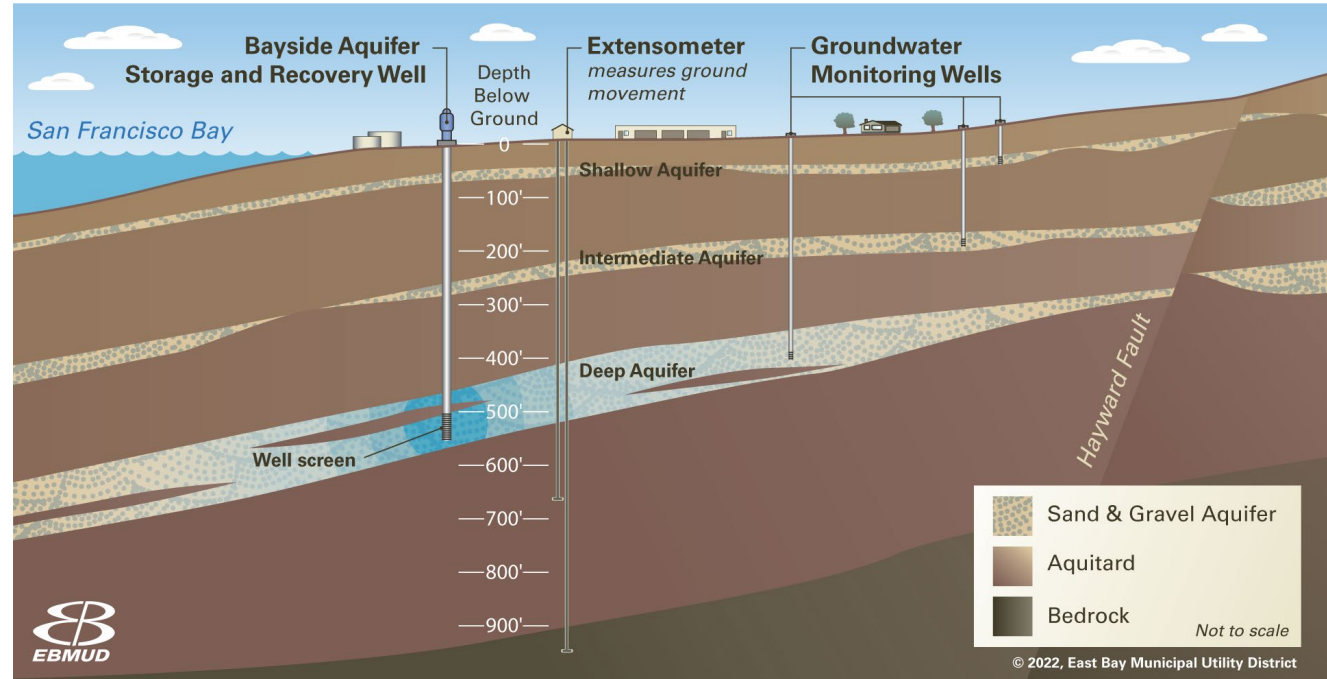
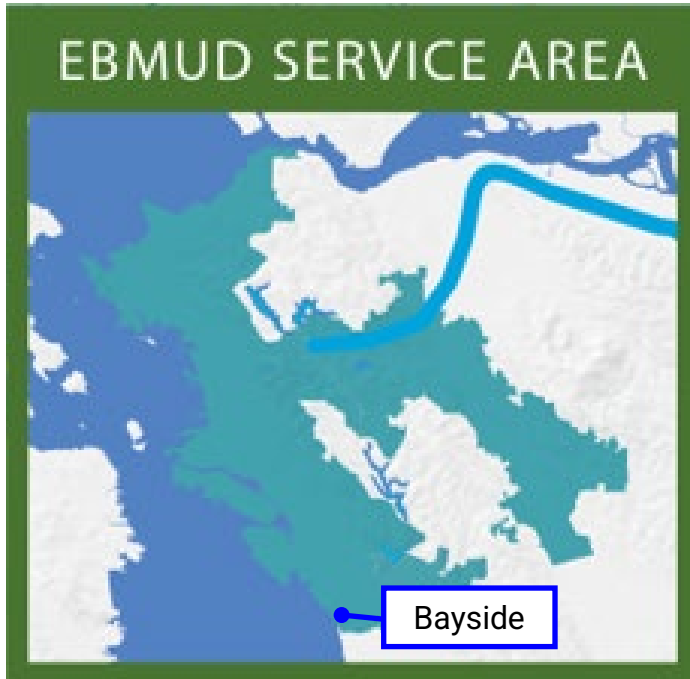
DREAM Pilot Project



Bayside Facility



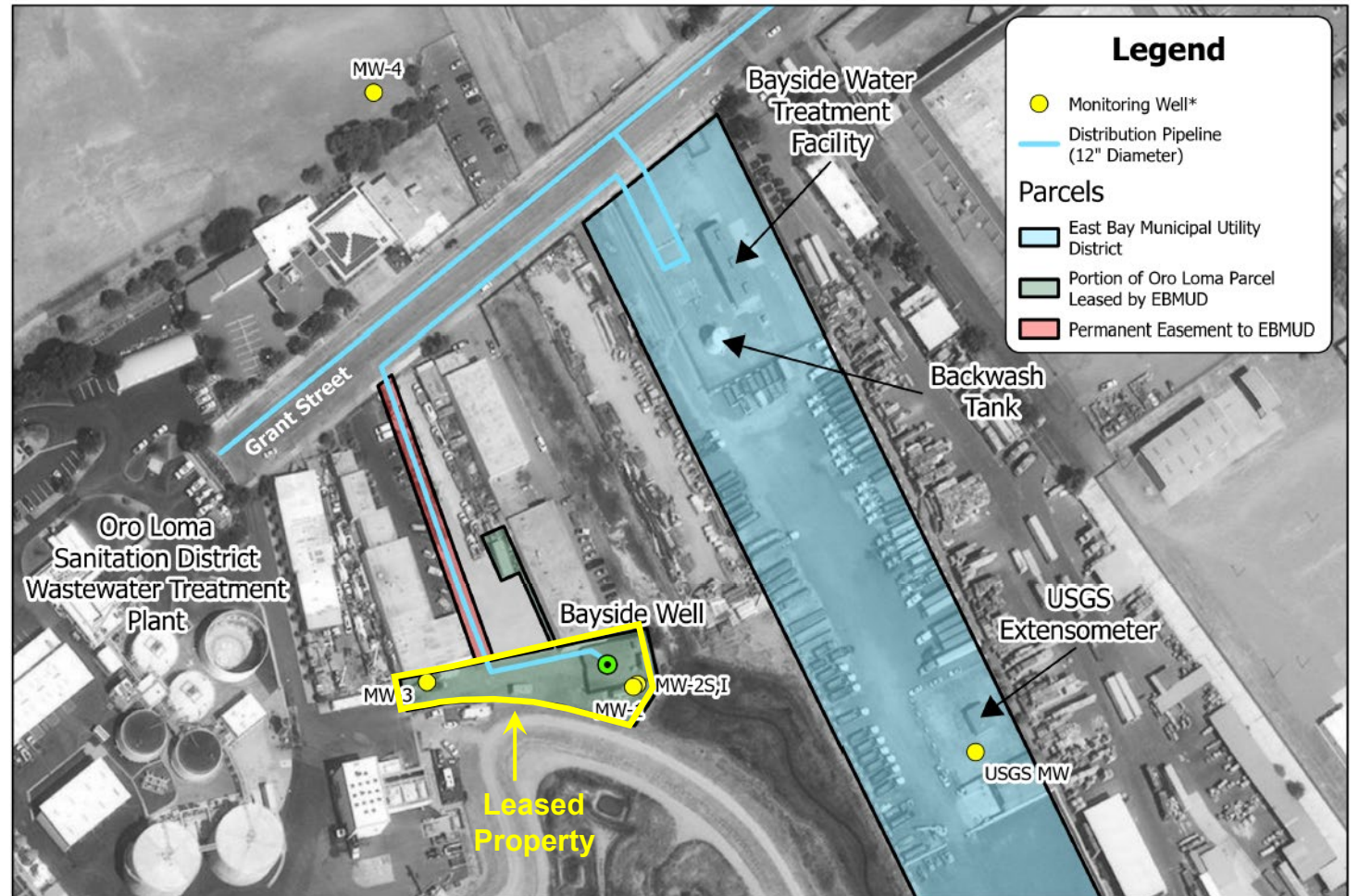
Bayside Overview



- Using a well, treated drinking water is stored in wet years in the aquifer to potentially be pumped later to provide water supply during severe droughts or emergencies, which has not yet been needed
 - Located about 600 feet deep and is protected from shallow groundwater impacts and seawater intrusion
- No purified recycled water injection is planned at Bayside

Facilities

- Injection/extraction well and four monitoring wells on Oro Loma Sanitary District (OLSD) property
- Water treatment facility and extensometer on nearby EBMUD property
- EBMUD lease with OLSD expired on August 31, 2024
- EBMUD is working with OLSD on the demolition



Bayside Facilities and Parcels

*Additional groundwater monitoring wells are outside of the map extent.

0 60 120 240 US Feet



Bayside Demolition



Demolition Overview

- PG&E removed transformer and disconnected electrical service
- EBMUD will disconnect and plug the distribution pipeline on OLSD property and remove and store salvageable items
- OLSD will be responsible for sealing and filling all 5 wells following State and Alameda County requirements and removing remaining equipment and structures
- OLSD plans to coordinate with EBMUD on the construction plans and specifications
- Demolition anticipated to begin later in 2025



Next Steps

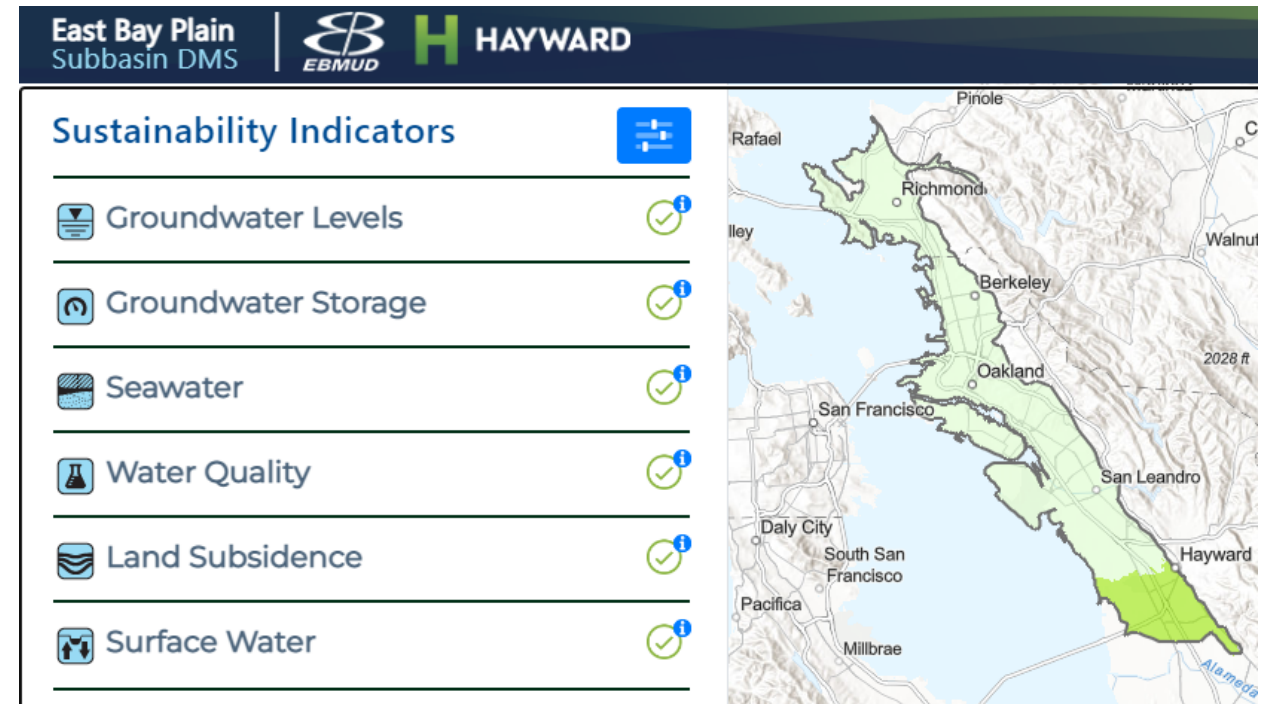
Future of Bayside

- Priorities for EBMUD's supplemental water supply projects are being re-evaluated for the upcoming 2025 Urban Water Management Plan
- More data is needed before a future phase of Bayside is considered
- Continued community engagement to provide updates



Data Available to the Public

- Bayside monitoring data and reports on EBMUD's webpage
 - <https://www.ebmud.com/bayside>
- East Bay Plain Subbasin Data Management System
 - <https://eastbayplaindms.com/>
- Sustainable Groundwater Management Act Data Viewer
 - <https://sgma.water.ca.gov/webgis/?appid=SGMADataViewer>



Questions?

