



RFP for Camanche BESS Economic Feasibility Study

Pre-Proposal Conference
Thursday, May 15, 2025

Table of Content

- EBMUD Contract Equity Program (CEP)
- Contracted Services
 - Background & Scope
 - Q&A
- Optional Services
 - Project Description & Scope
 - Q&A
- RFP Response
- Key Dates

Contract Equity Program

- Enhances equal opportunities for business owners of all races, ethnicities, and genders who are interested in doing business with EBMUD, especially those that are small and local.
- CEP Information:
 - Website: <https://www.ebmud.com/business-center/contract-equity-program>

Contracted Services

Background:

- Camanche Area
- District's Facilities around Camanche Area

See **Map & Figures Camanche Area.pdf** for:

- Project Location / Vicinity Map
- Camanche Area Federal Energy Regulatory Commission (FERC) Boundary

Contracted Services

Background (cont'd):

- Camanche Raw Water Pumping Plant (RWPP)
 - Four, each 33.3 mgd VFD pumps, only operated during drought conditions (most recent operation in 2022)
 - The Camanche BESS project is NOT to displace energy consumption or provide backup power for this RWPP
- Camanche Substation
 - Constructed & owned by the District to serve the Camanche RWPP load
 - Connected to PG&E's 230 kV transmission line
 - An ~45,000 sq ft of open space within site boundary

Contracted Services

District's Intent: Develop a mid- to large-scale BESS project to enhance revenue

Objective: Evaluate the technical and financial feasibility of a BESS

Project Alternatives:

- A standalone FOM BESS (site: Camanche Substation)
- Integrating the FOM BESS with a new PV system (site: TBD)
- Integrating the FOM BESS with a new IC Hydroelectric System (site: Camanche Fish Hatchery)
- Integrating the FOM BESS with the existing Camanche Hydropower Plant

See **Map & Figures Camanche Area.pdf** for:

District's Facilities around Camanche Area

- Overview
- Close up views

Contracted Services

Scope:

- Estimate Project Capital Costs
- Forecast Revenue
- Develop an Implementation Plan

Deliverables:

- Report and Workshop
- Meetings
 - Progress Meetings (bi-weekly)
 - Board of Directors Meeting

Contracted Services

Questions?

Optional Services

Background:

- CEC Mandate in January 2023: requires all new commercial properties to install both solar PV and battery system
- EBMUD's intent: evaluate a BTM PV-BESS as part of four new projects

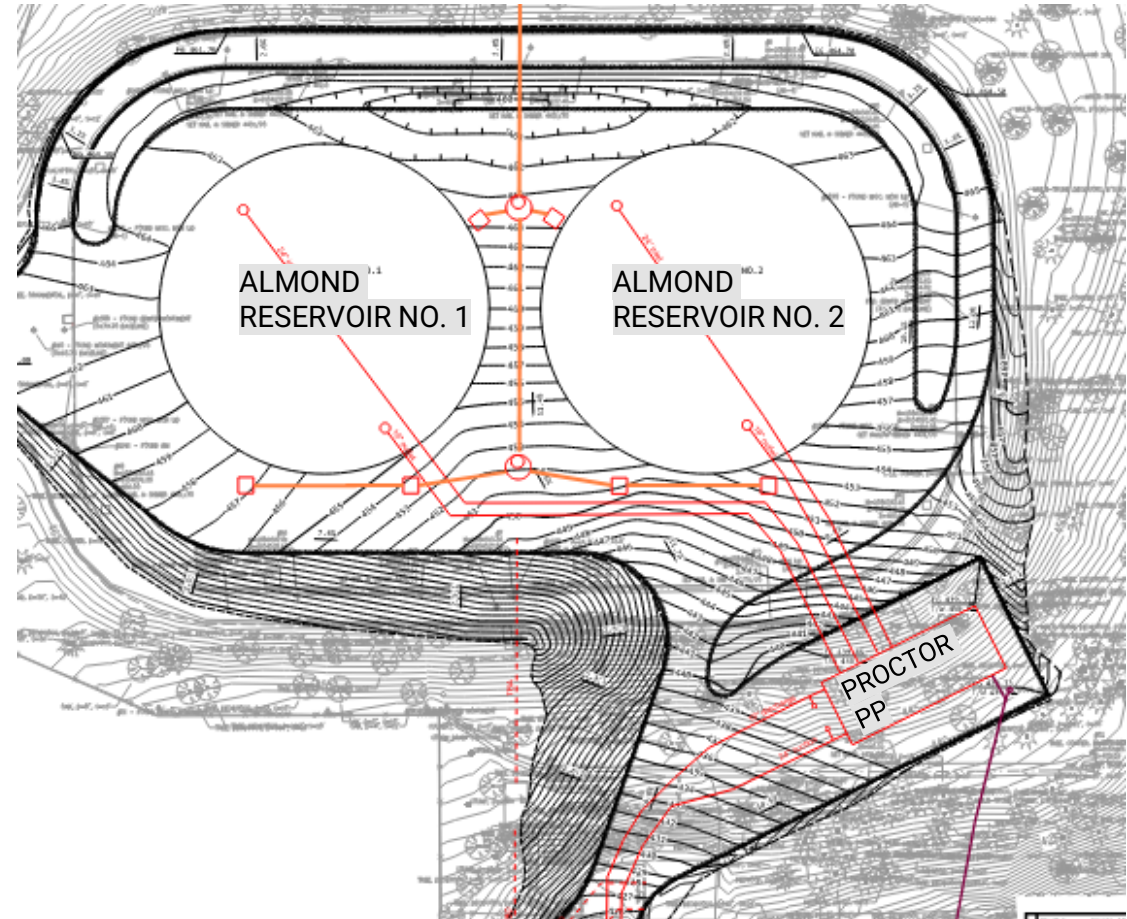
Project Descriptions by:

- Emily Sing
- Najme Jalali
- Agnes Wan
- Sarah Plummer

Optional Services

Almond Reservoir / Proctor Pumping Plant

- Rehabilitation of an existing reservoir and pumping plant with two new 1.8-MG concrete tanks and a new 5.3 MGD pumping plant
- PV array on the reservoir roof
 - ~30,000 SF



Optional Services

Fleet Maintenance East Facility

A – PV array on new

Admin building roof

- ~ 900 S.F. available

B – PV array on new

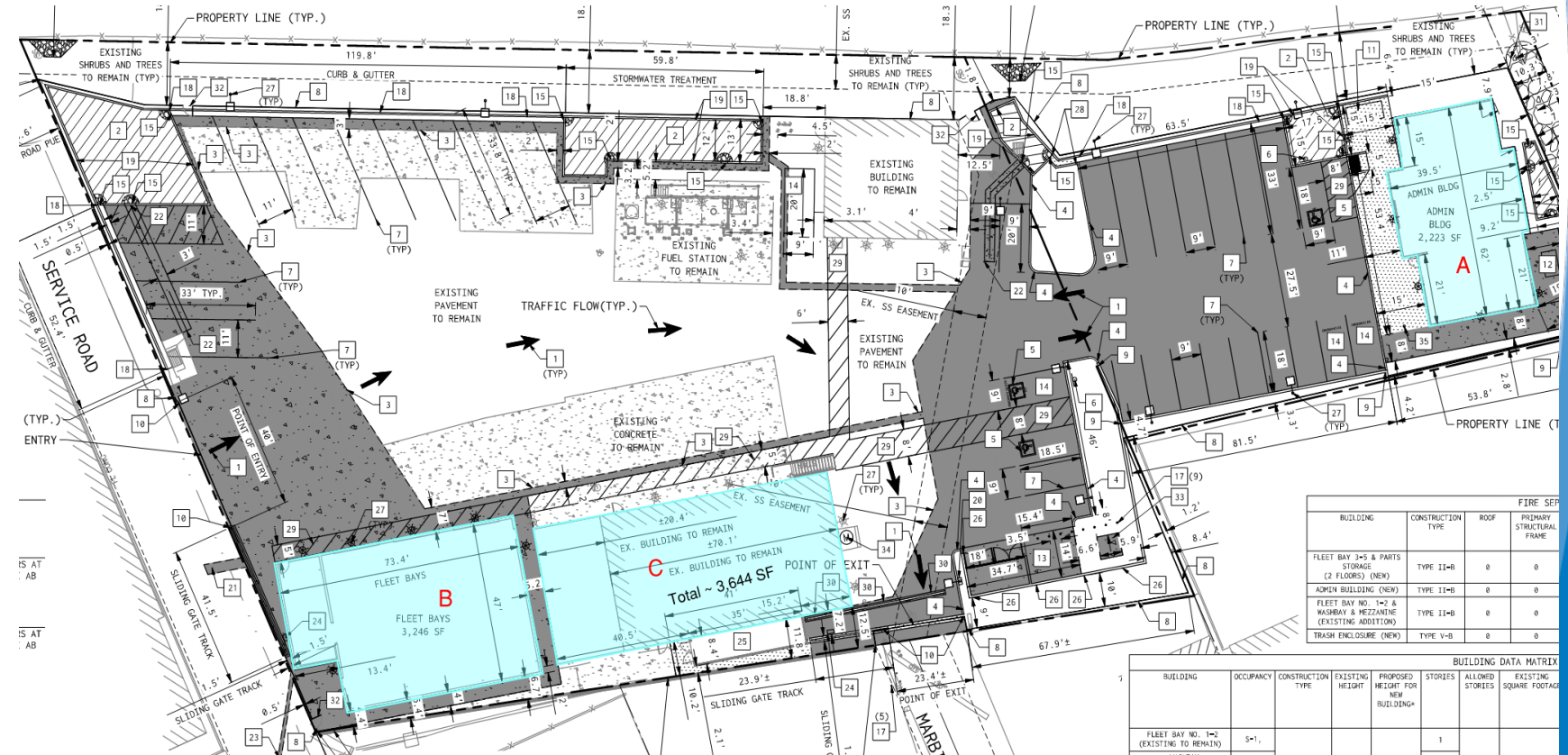
fleet building roof

- ~ 600 S.F. available

C – PV array on existing

fleet building roof

- ~ 1,500 S.F. available



Optional Services

New Central Area Service Center

A – PV array on canopy

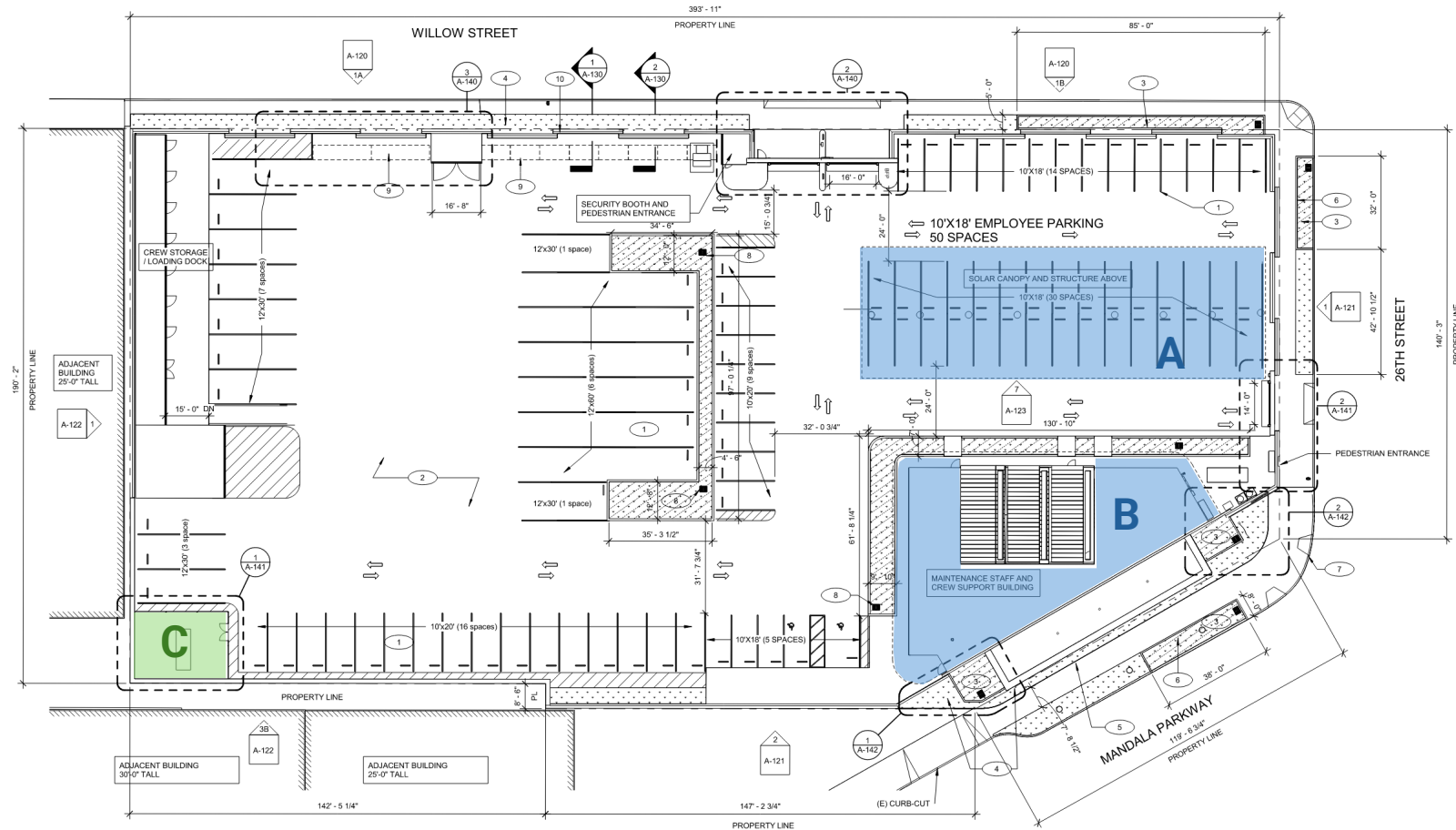
- 4,375 s.f.

B – PV array on roof

- 4,110 s.f.

C – Battery storage

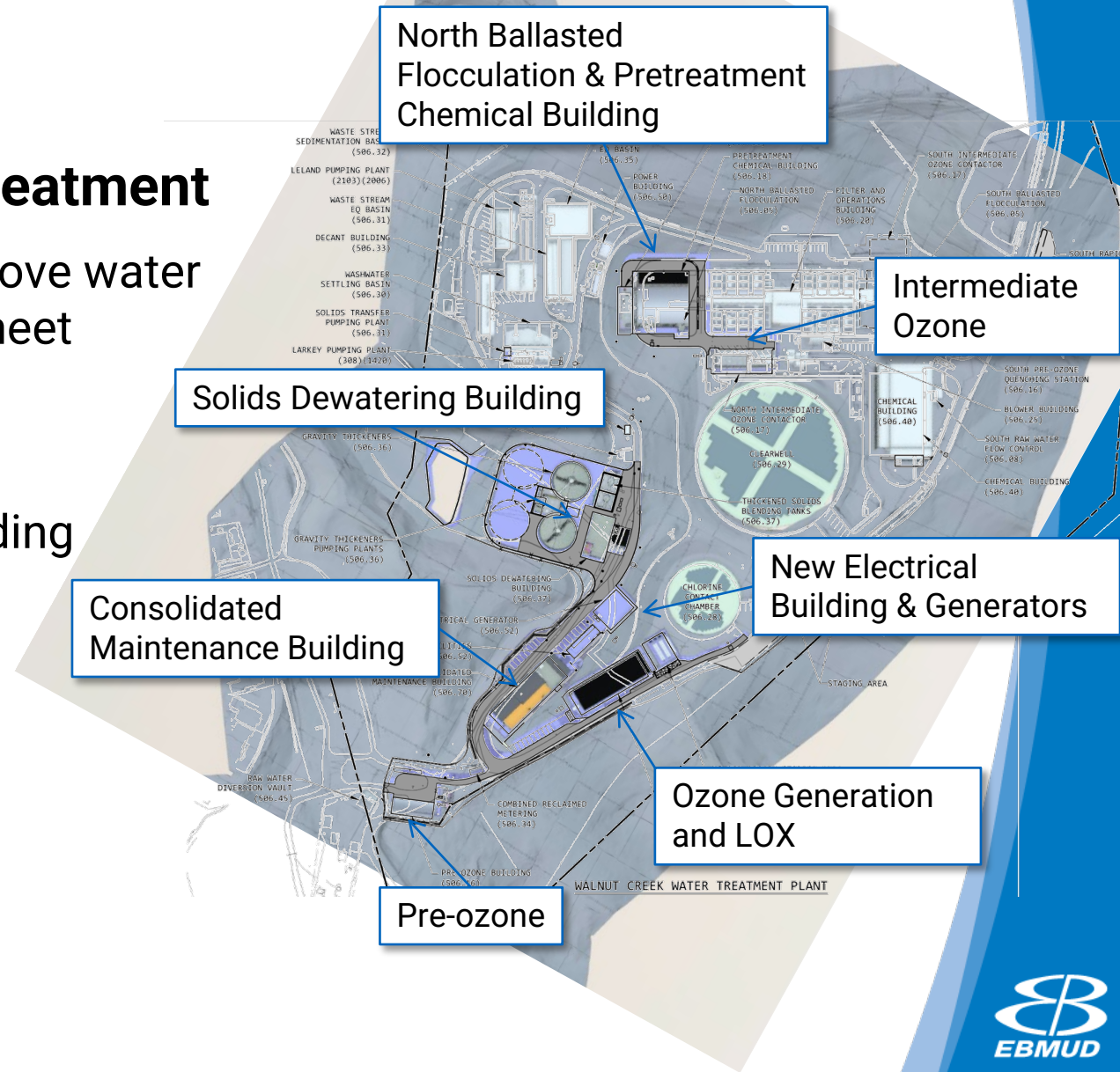
- 755 s.f.



Optional Services

Walnut Creek Water Treatment Plant Pretreatment

- Construction of new treatment processes to improve water system reliability and increase WTP capacity to meet planned future demands
- New facilities include:
 - Ballasted flocculation and new chemical building
 - Solids dewatering building
 - Ozone generation and injection facilities
 - New electrical power building & generators
 - Consolidated maintenance building
- Construction estimated for 2029 – 2034
- Available for PV: ~ 25, 000 SF



Optional Services

Scope:

- Review Data
- Size PV-BESS: comply with applicable regulatory requirements and consider providing backup power
- Estimate Project Cost:
 - EBMUD-owned vs PPA
 - Simple payback calculation

Deliverables:

- Memos

Optional Services

Questions?

RFP Response

- See Exhibit A of the RFP Response Packet
- Must complete, sign, and submit the required CEP forms
 - CEP webpage: <https://www.ebmud.com/business-center/contract-equity-program>
 - Need Help? 510-287-0114 or contract.equity@ebmud.com
- References
 - Minimum three
 - Contact information up to date
- Must acknowledge acceptance of all addenda

Key Dates

- Questions: No later than Wednesday, May 21, 2025
- Proposal Due: by email no later than 12:00 PST on Friday, May 30, 2025
- *Interview:* TBD
- Notice of Selection: Friday, July 11, 2025
- Notice to Proceed: Tuesday, November 11, 2025
- Final Deliverables Due: Wednesday, May 05, 2026
- Contract End: Monday, June 01, 2026

Thank You



Flowing
into the
Future