



# Water Supply Update

Board of Directors

April 8, 2025

Roberto C. Cortez, Manager of Water Operations

# Briefing Topics

- Current Water Supply
- Water Supply Projections



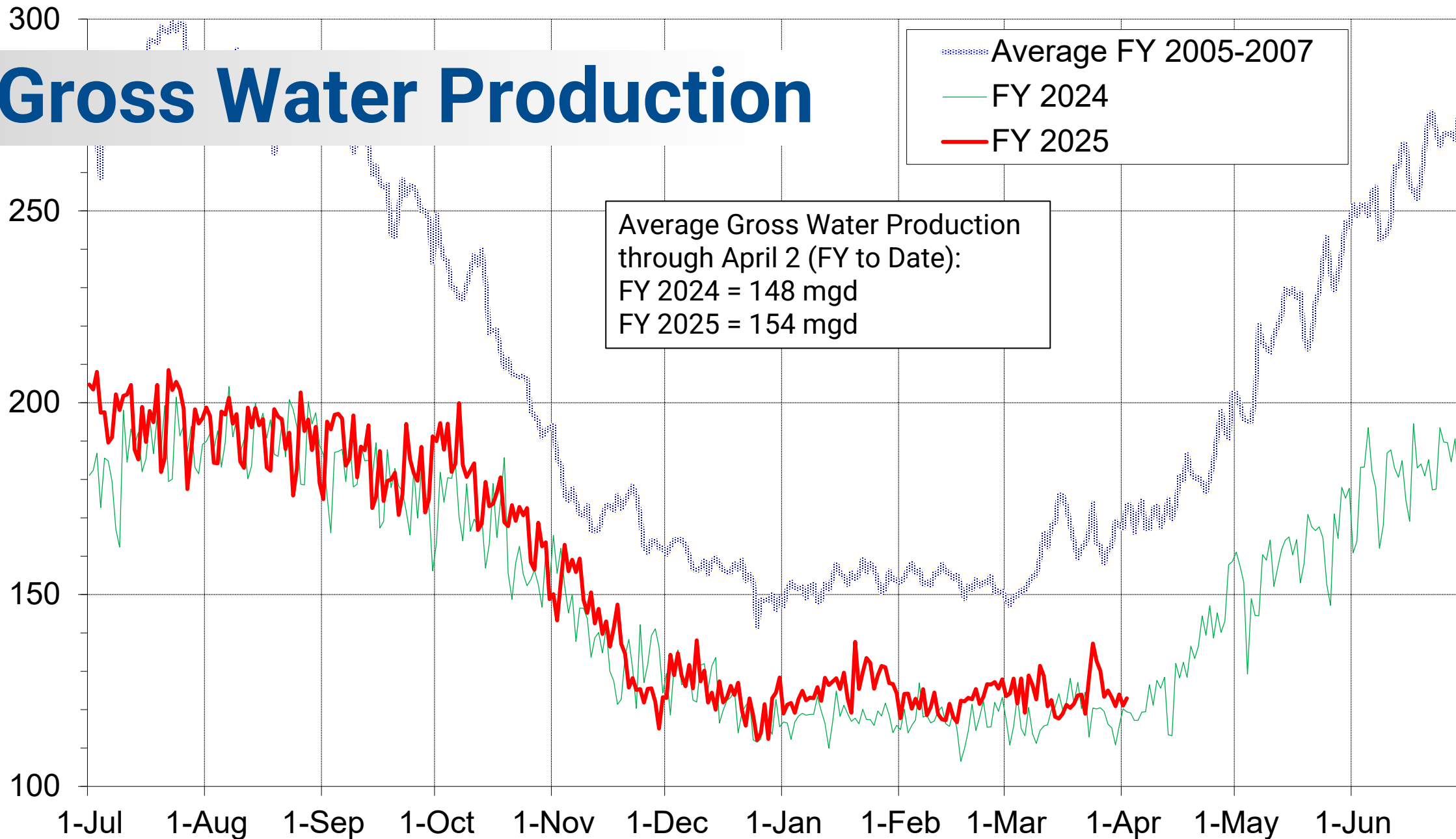
# Current Water Supply

A blue-tinted photograph of a river flowing over rocks, with dense trees in the background. The river is in the foreground, with many rocks visible beneath the water. The background is filled with a thick forest of trees.



# Gross Water Production

Gross Water Production (mgd)



# Reservoir Storage

As of 4/2/2025	Current Storage	Percent of Average	Percent of Capacity
Pardee	185,230 AF	99%	91%
Camanche	326,840 AF	109%	78%
East Bay	136,930 AF	99%	91%
Total System	649,000 AF	103%	84%

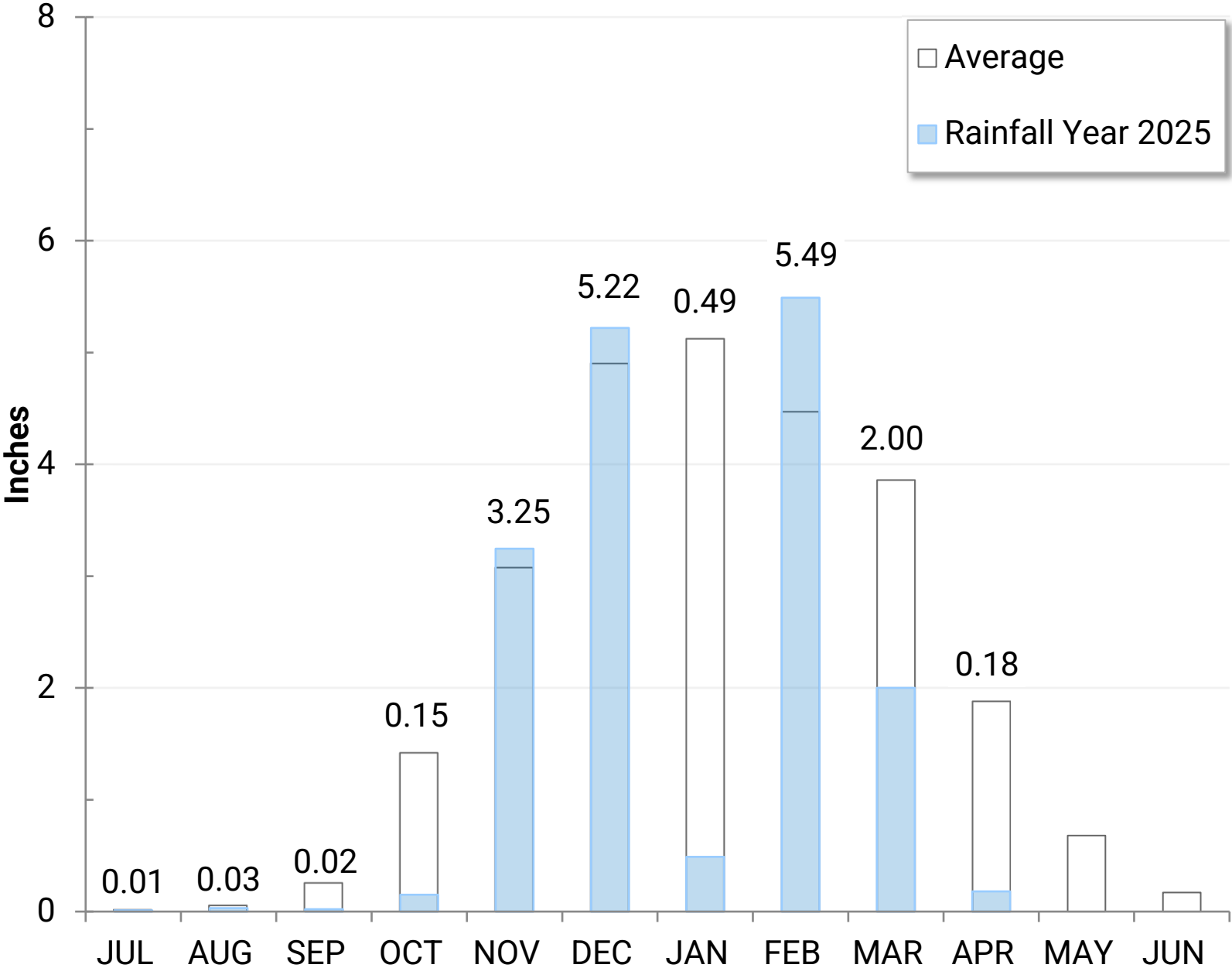
AF: Acre-Feet

# Precipitation as of April 2

East Bay: 16.8”  
(70% of average)

Weather Station  
Details

- USL WTP
- Lafayette Reservoir
- Data collected since 1953



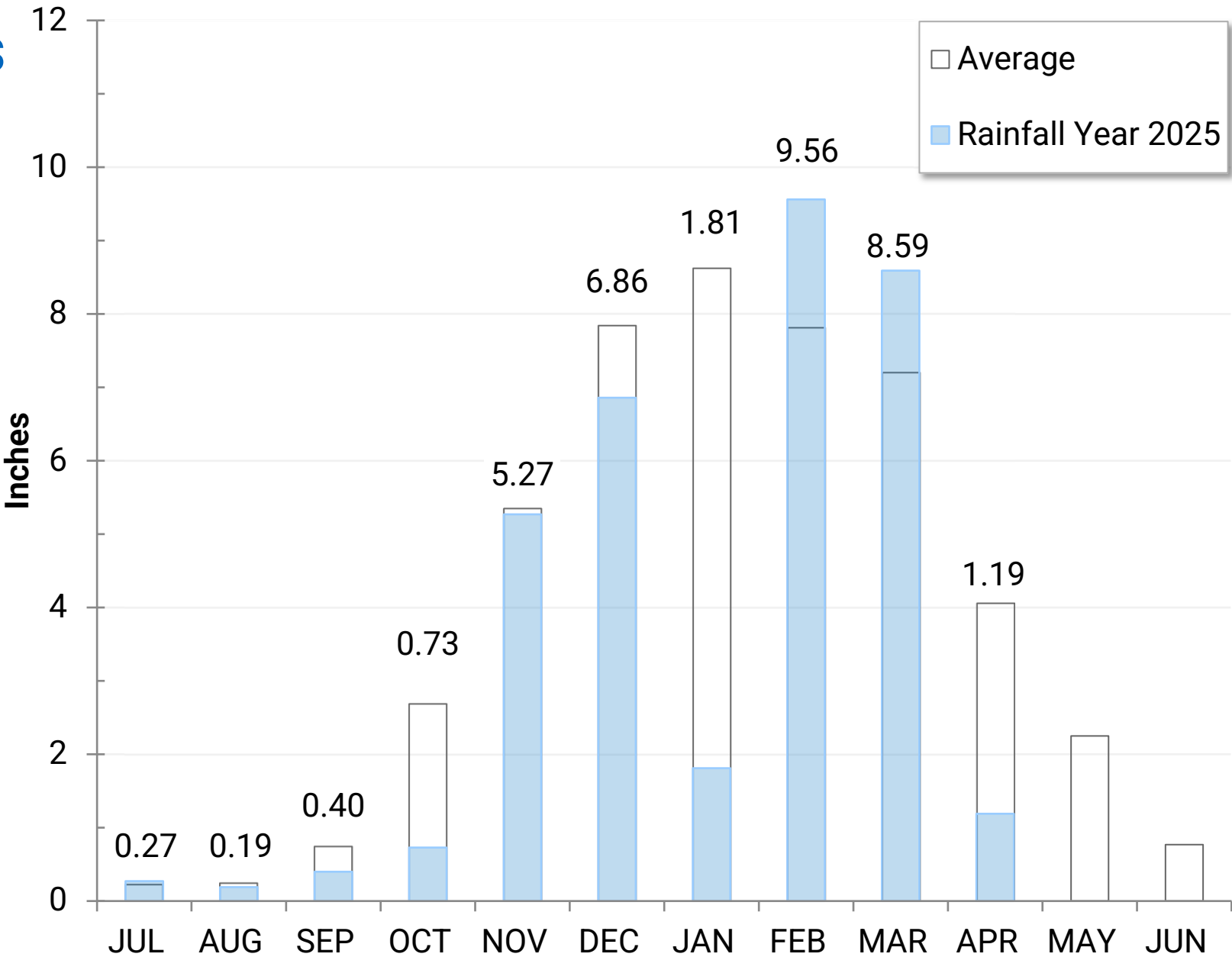


# Precipitation as of April 2

Mokelumne: 34.9”  
(84% of average)

### Weather Station Details

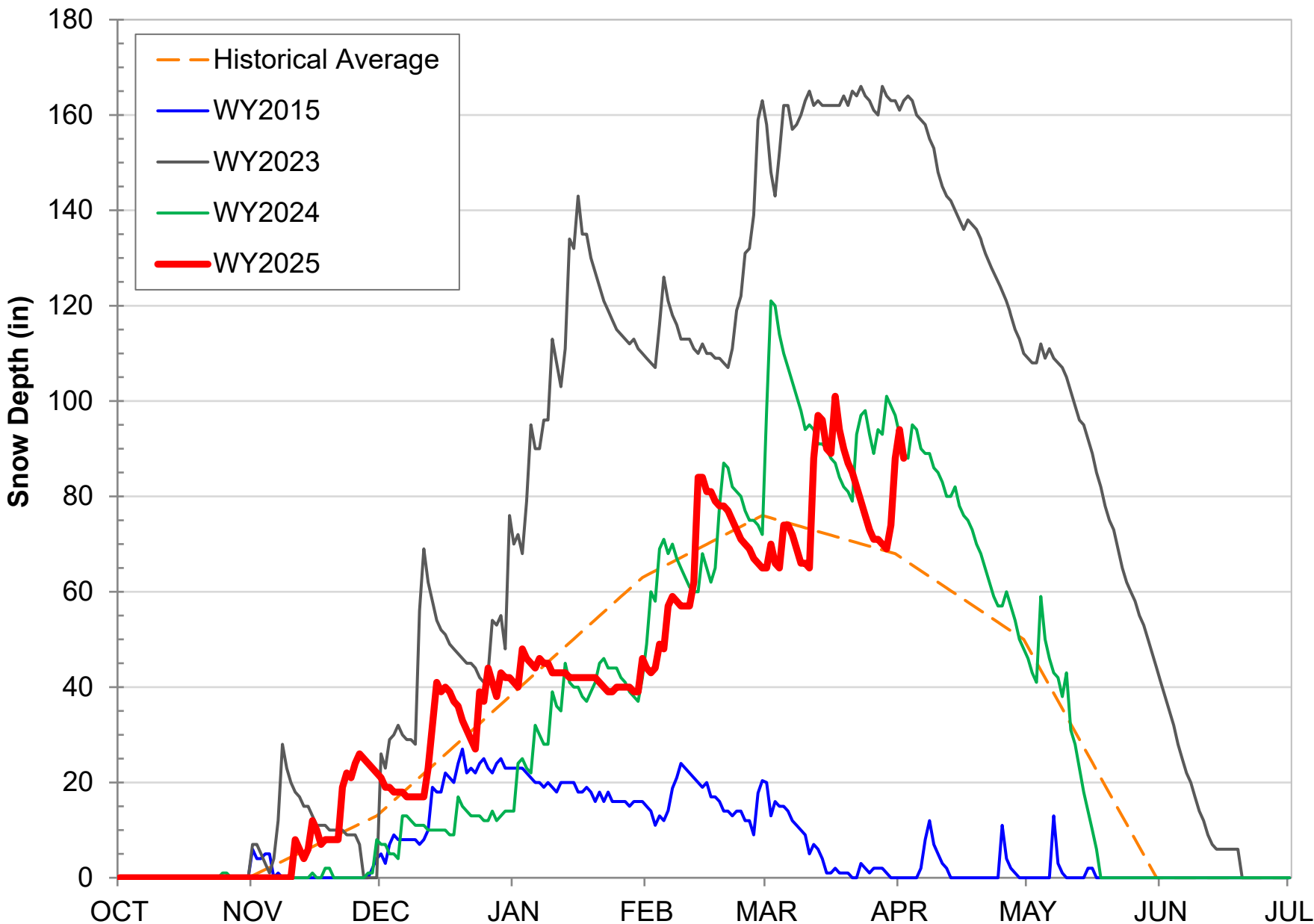
- Calaveras Big Trees
- Caples Lake
- Salt Spring Reservoir
- Tiger Creek Power Station
- Data collected since 1930



# Caples Lake Snow as of April 2

Snow Depth – 88”  
(132% of average)

Snow Water  
Content – 23.9”  
(86% of average)







# Snowpack as of April 2

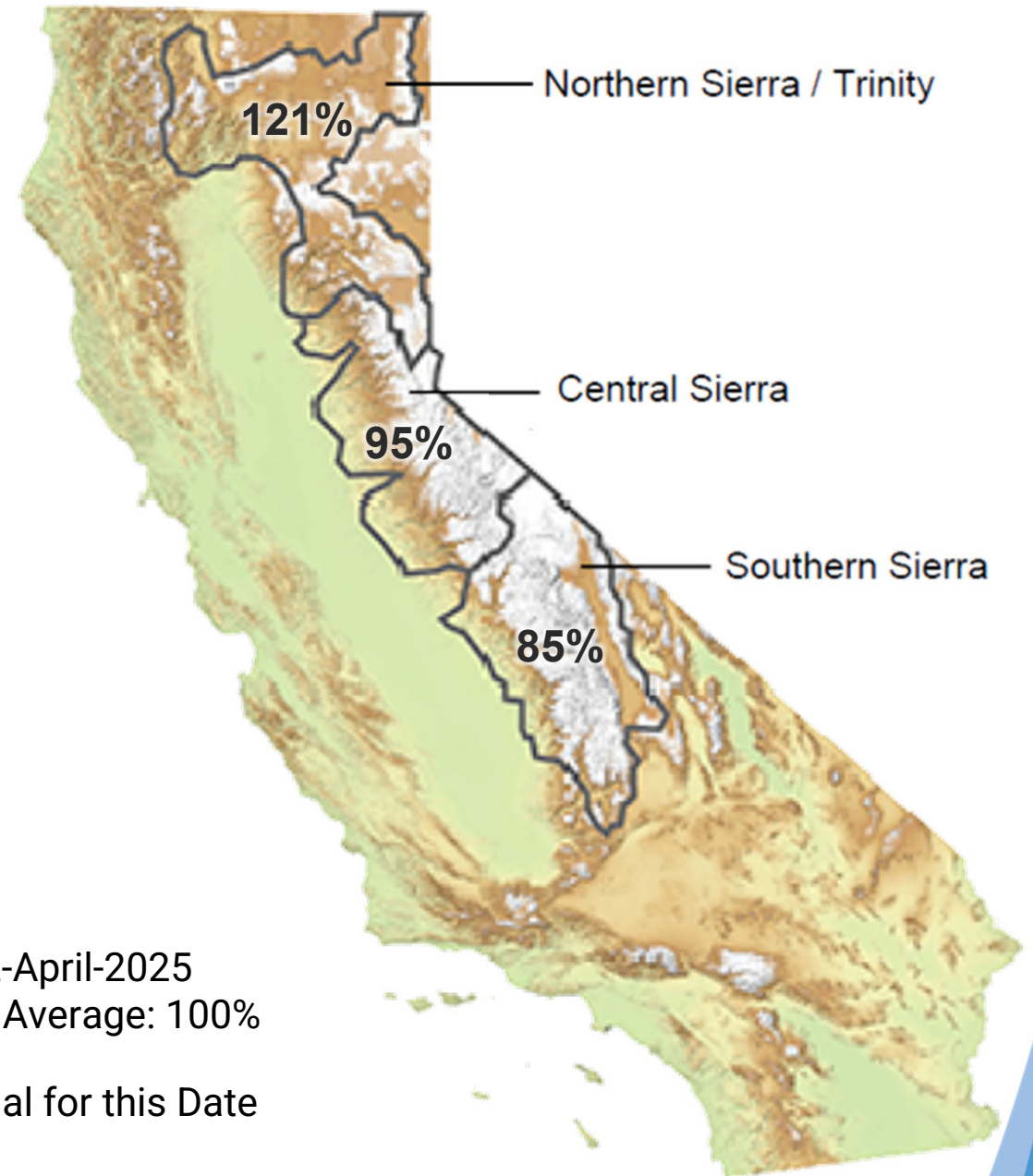
**Snow Water Equivalent:**

95% of Normal in Central Sierra



Data for: 2-April-2025  
Statewide Average: 100%

% of Normal for this Date



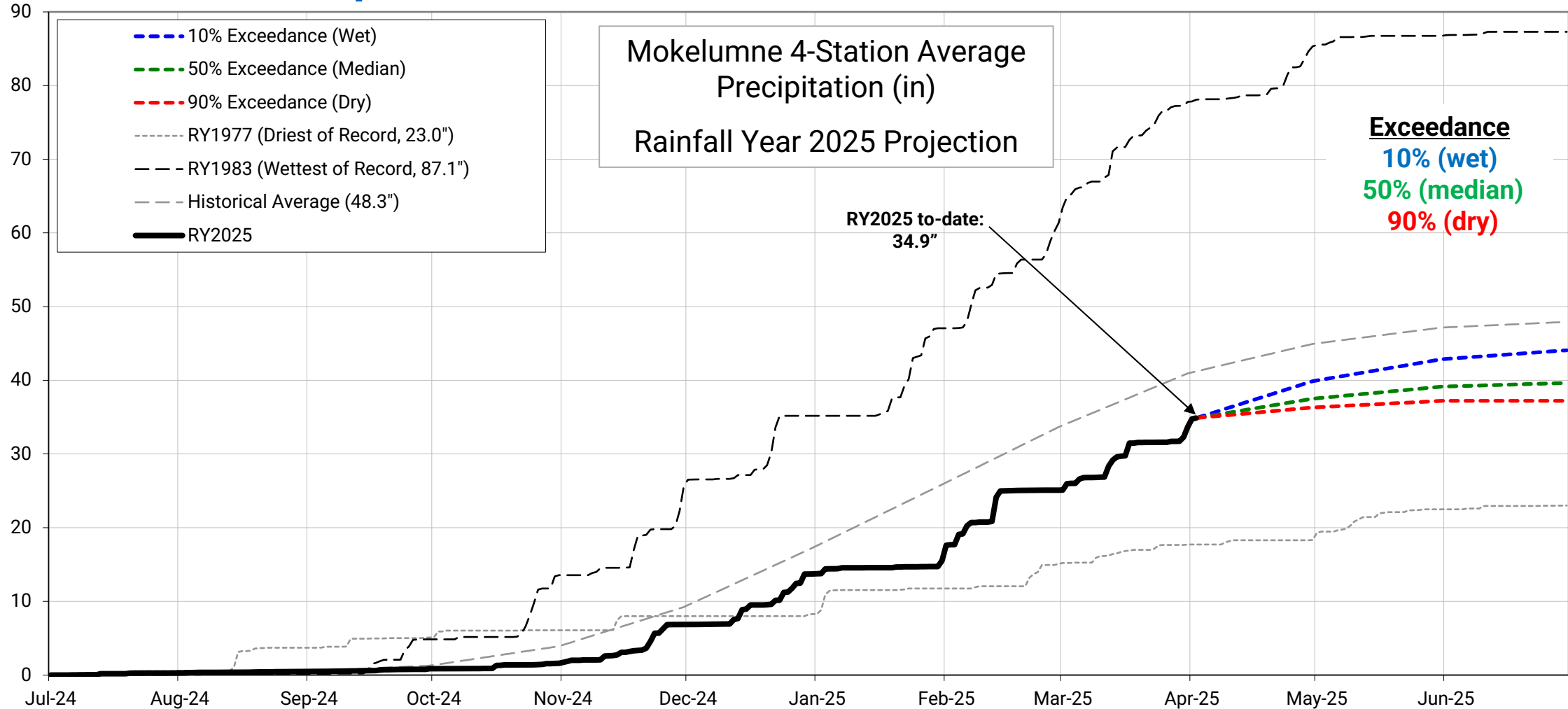


# Water Supply Projections



# Projected Precipitation

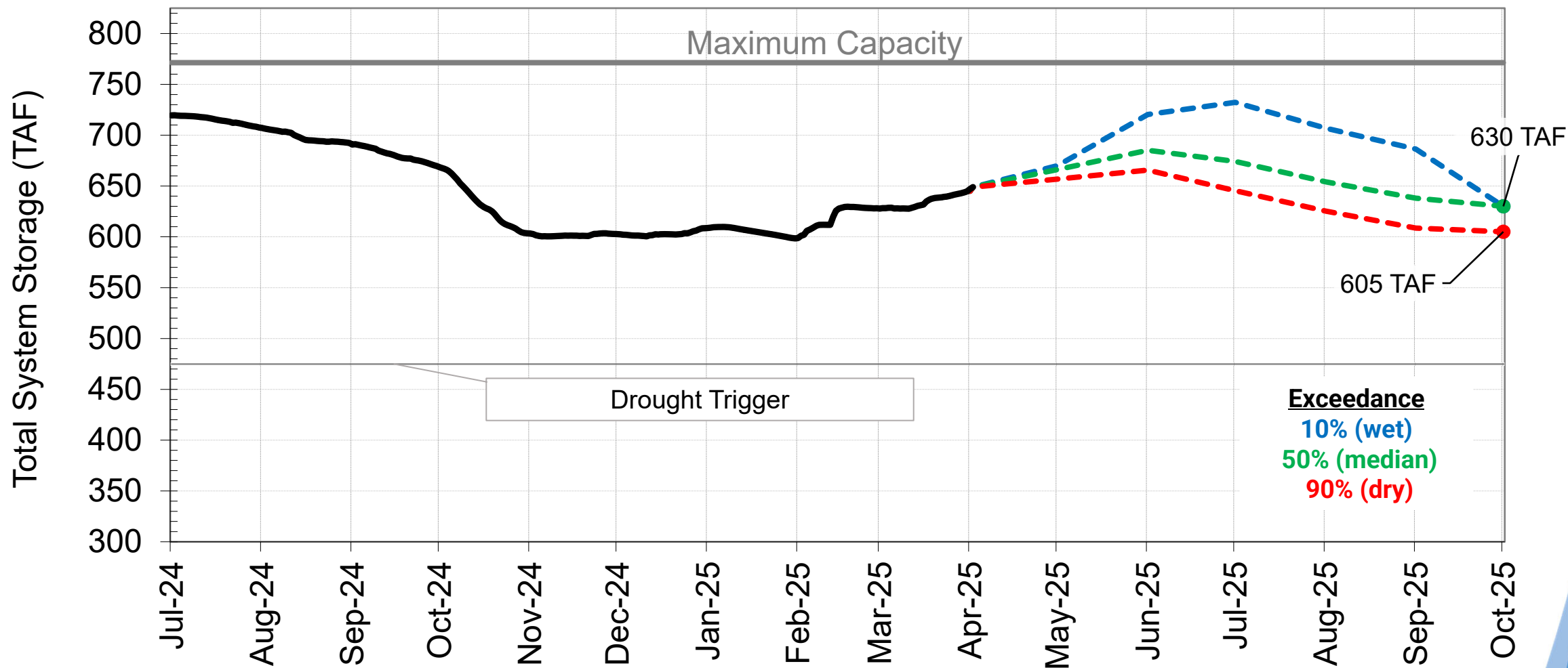
## Mokelumne Precipitation Rainfall Year 2025





# End of Season Storage

## 2025 Total System Storage Projections





# Questions?

