



Water Supply Update

Board of Directors

March 25, 2025

Roberto C. Cortez, Manager of Water Operations

An aerial photograph showing a large body of water, likely a lake or reservoir, surrounded by dense green forest. In the background, rolling hills and mountains are visible under a clear sky. The water reflects the surrounding landscape.

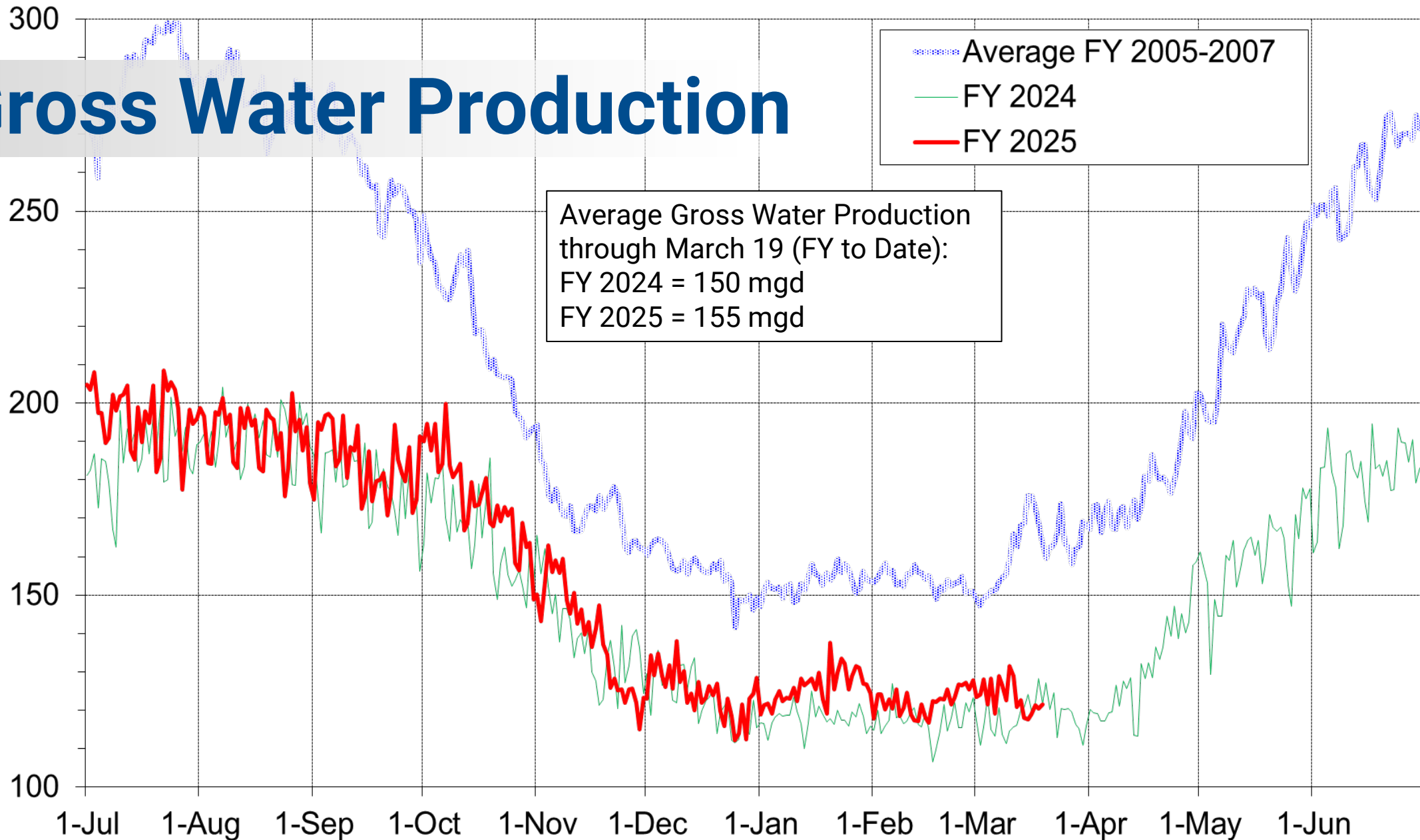
Briefing Topics

- Current Water Supply
- Water Supply Projections

Current Water Supply

Gross Water Production

Gross Water Production (mgd)



Reservoir Storage

As of 3/19/2025	Current Storage	Percent of Average	Percent of Capacity
Pardee	180,670 AF	97%	89%
Camanche	320,730 AF	111%	77%
East Bay	136,210 AF	100%	91%
Total System	637,610 AF	104%	83%

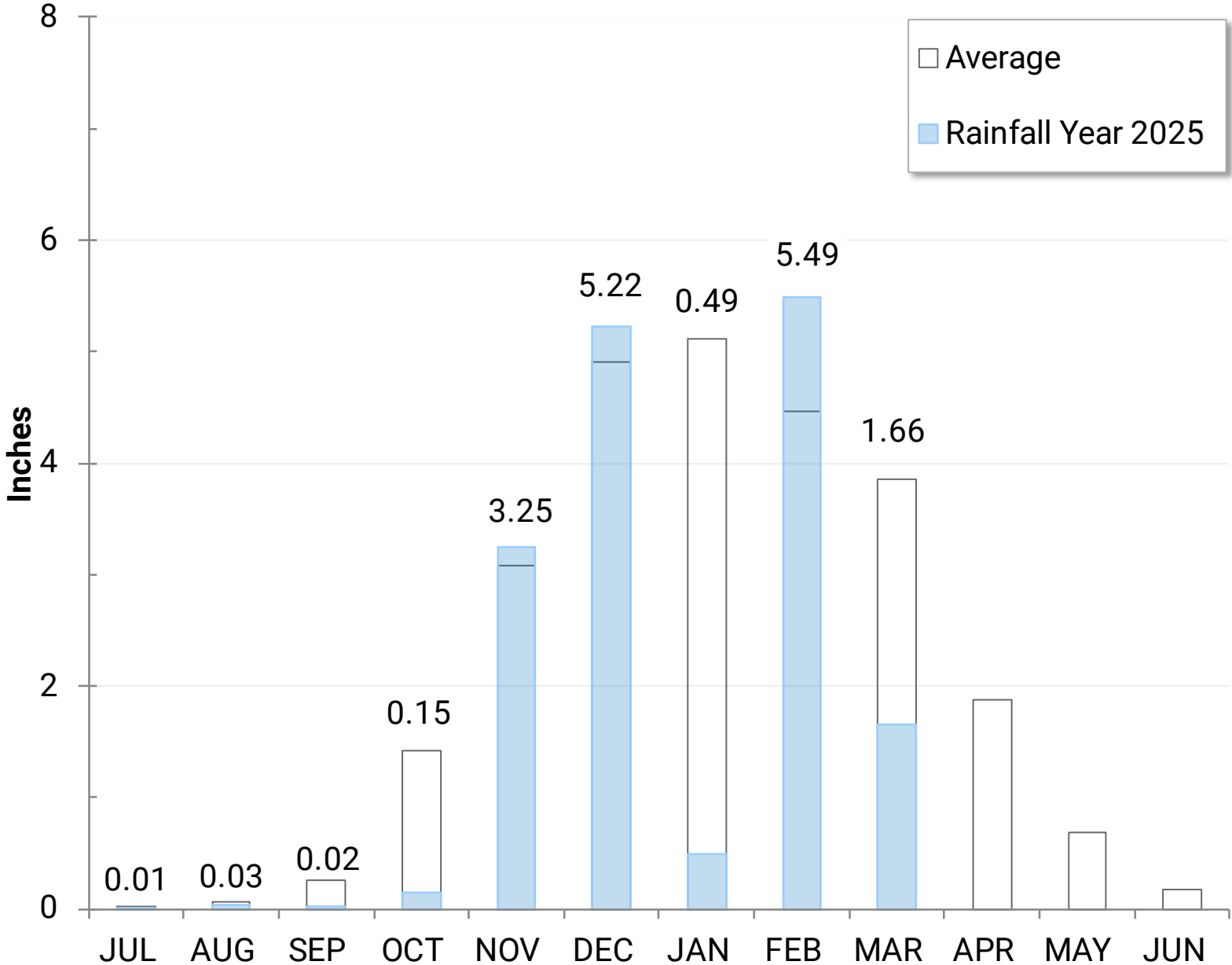
AF: Acre-Feet

Precipitation as of March 19

East Bay: 16.3”
(73% of average)

Weather Station
Details

- USL WTP
- Lafayette Reservoir
- Data collected since 1953

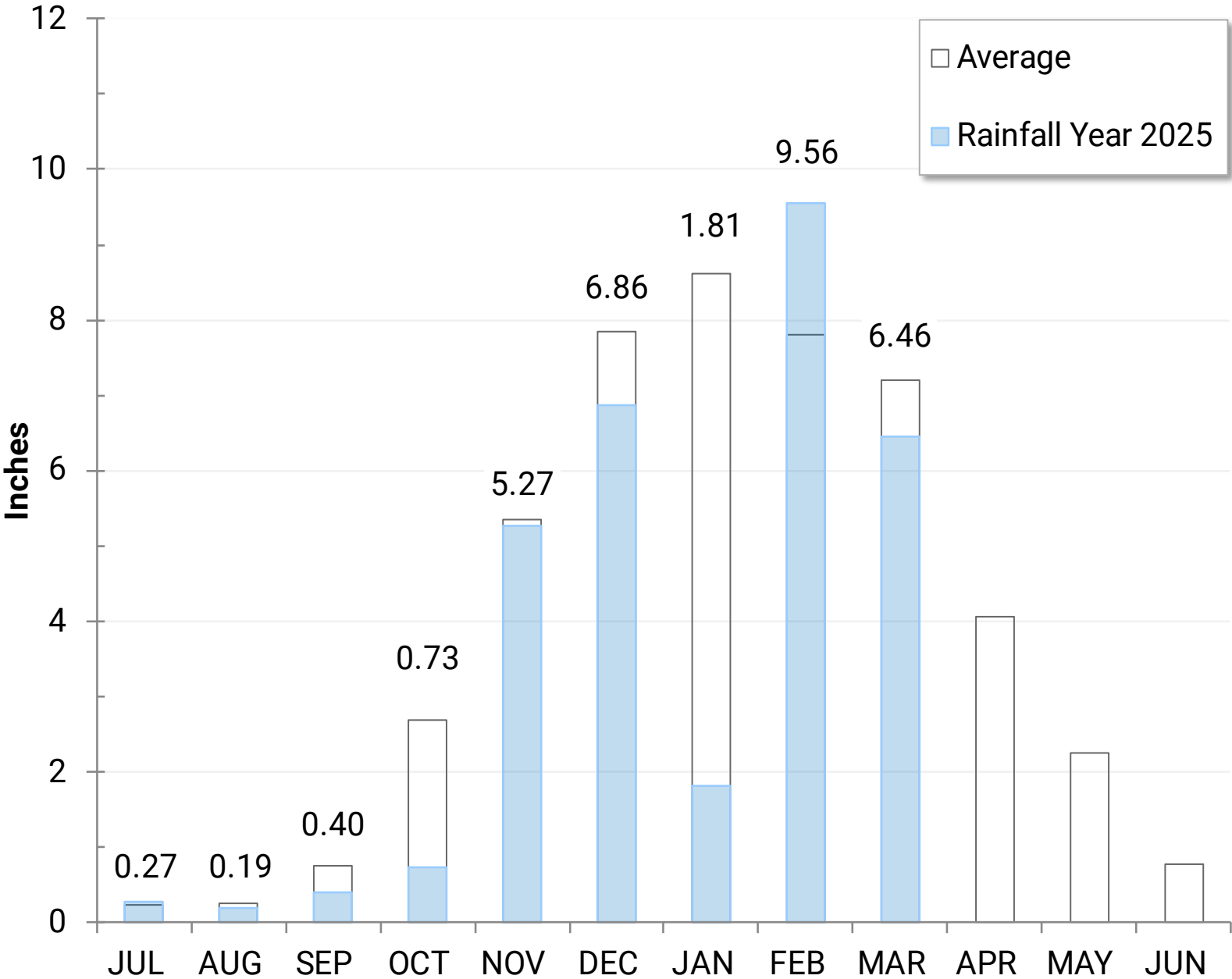


Precipitation as of March 19

Mokelumne: 31.6”
(82% of average)

Weather Station Details

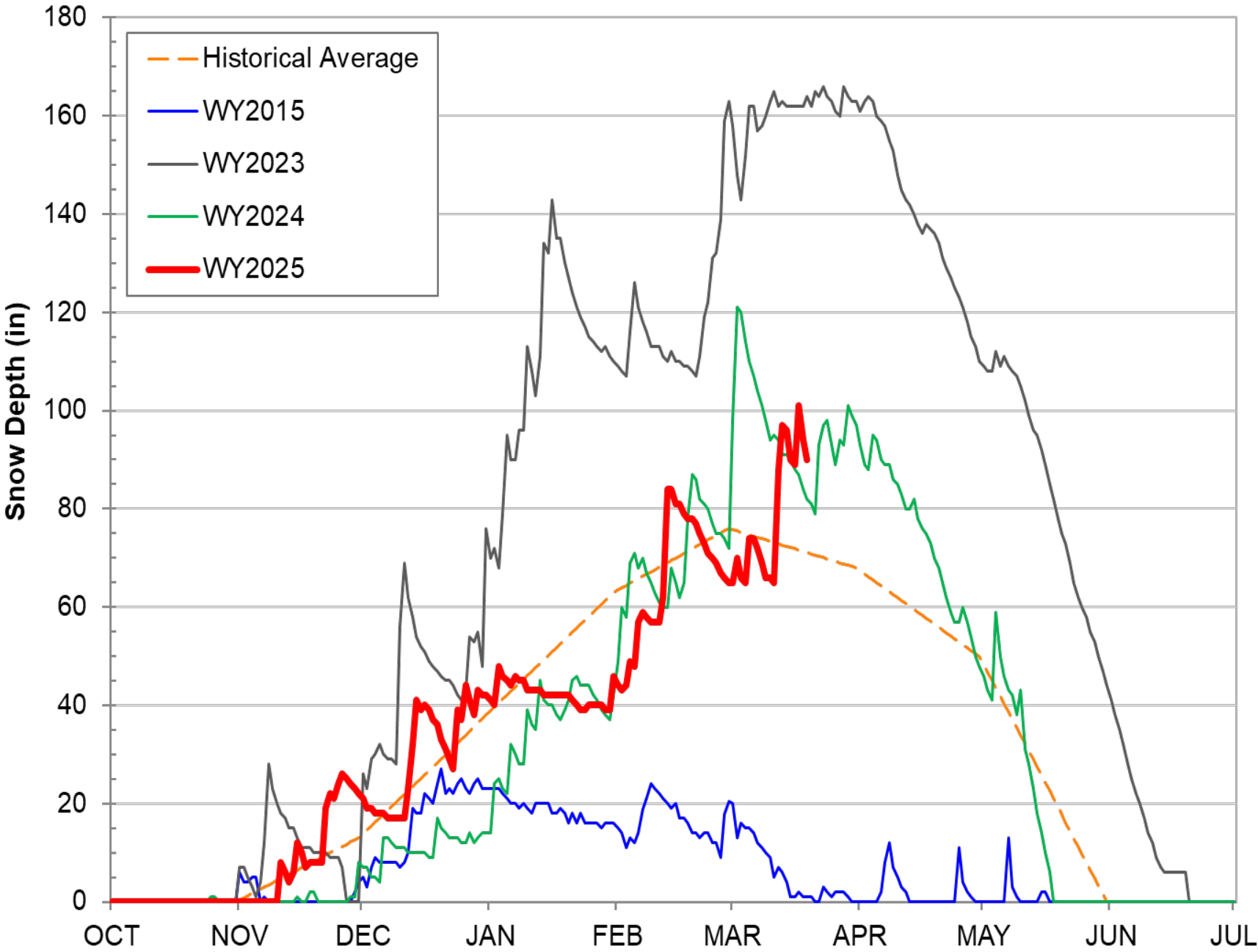
- Calaveras Big Trees
- Caples Lake
- Salt Spring Reservoir
- Tiger Creek Power Station
- Data collected since 1930



Caples Lake Snow as of March 19

Snow Depth – 90”
(127% of average)

Snow Water
Content – 23.8”
(86% of average)





Snowpack as of March 19

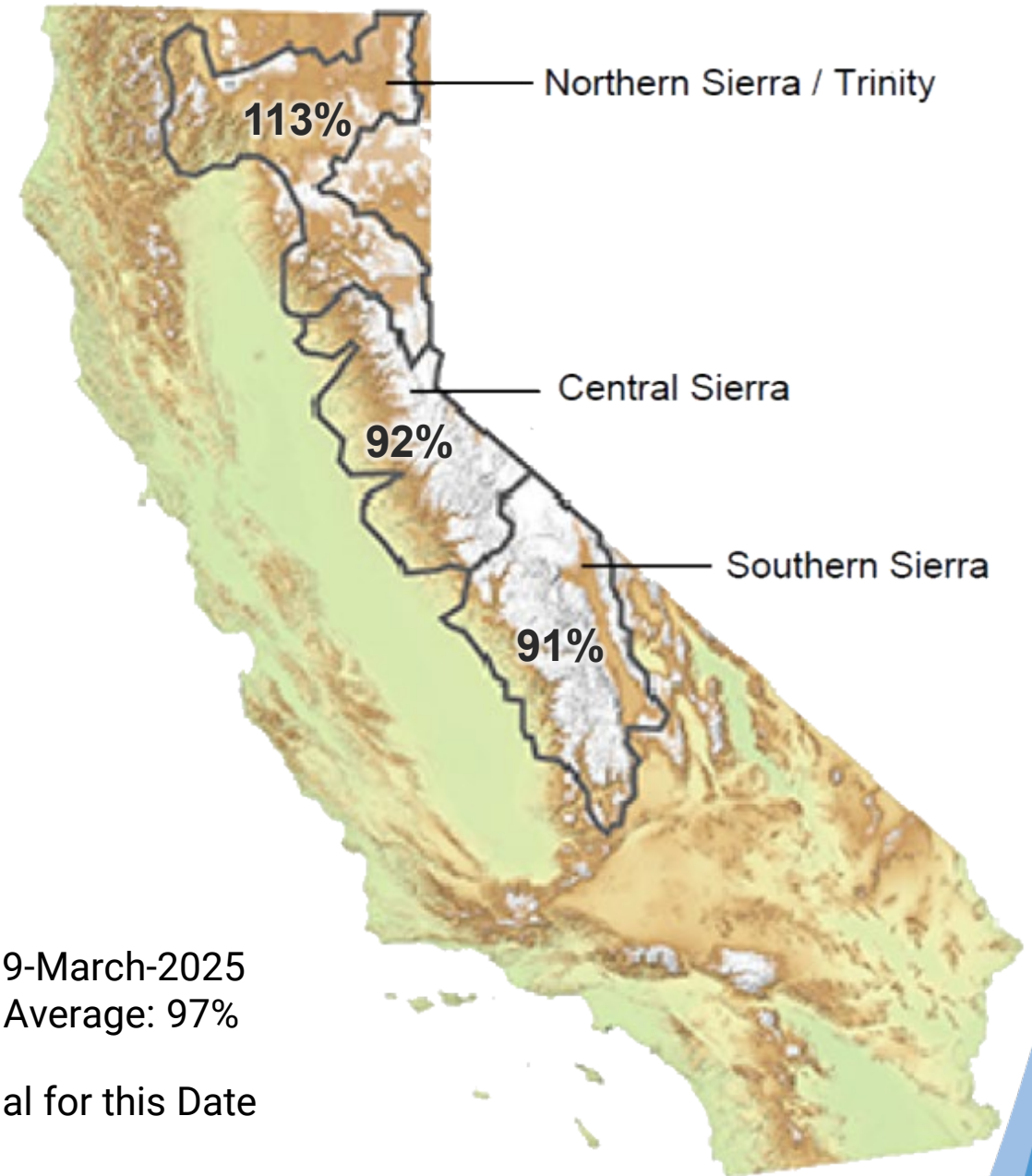
Snow Water Equivalent:

92% of Normal in Central Sierra

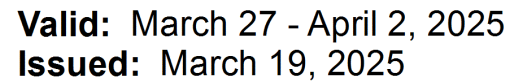


Data for: 19-March-2025
Statewide Average: 97%

% of Normal for this Date

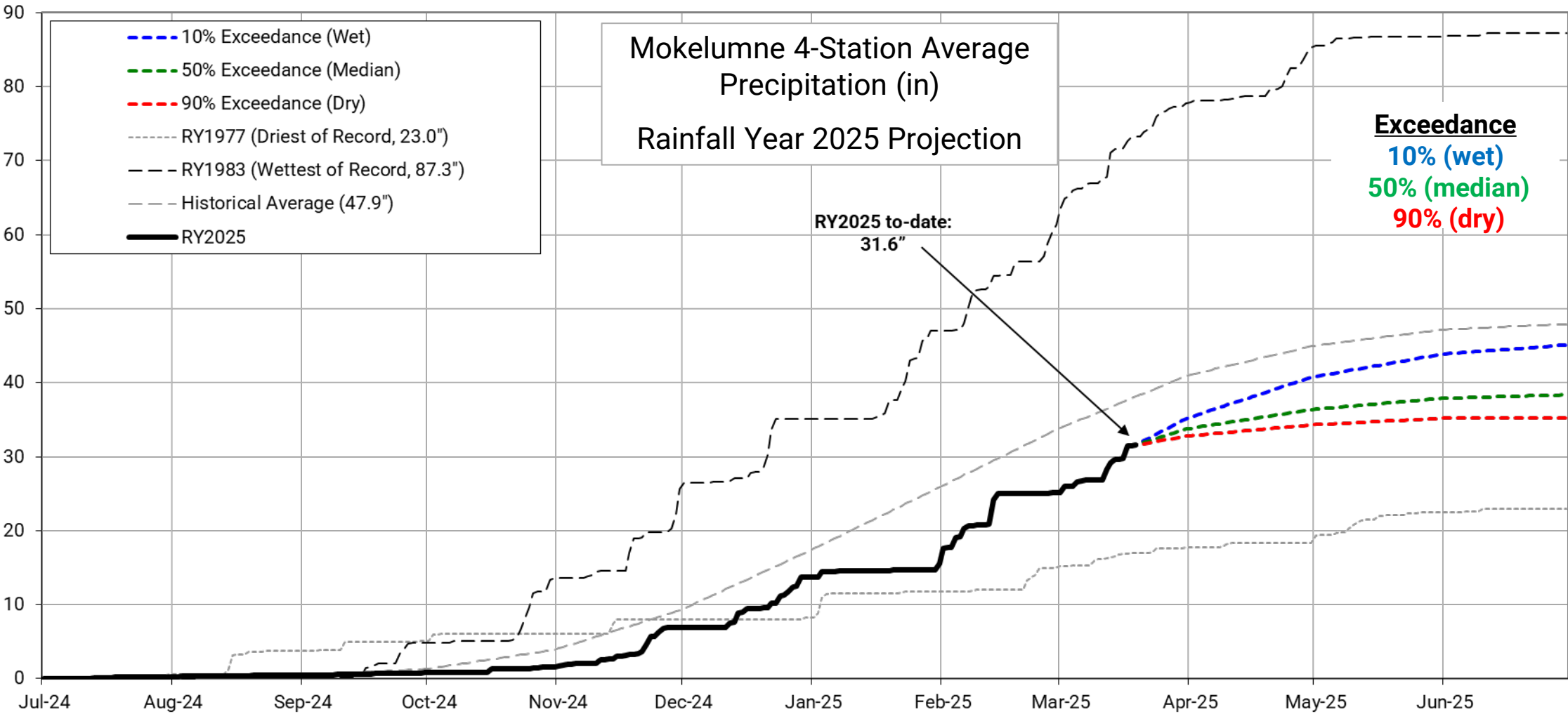


Water Supply Projections



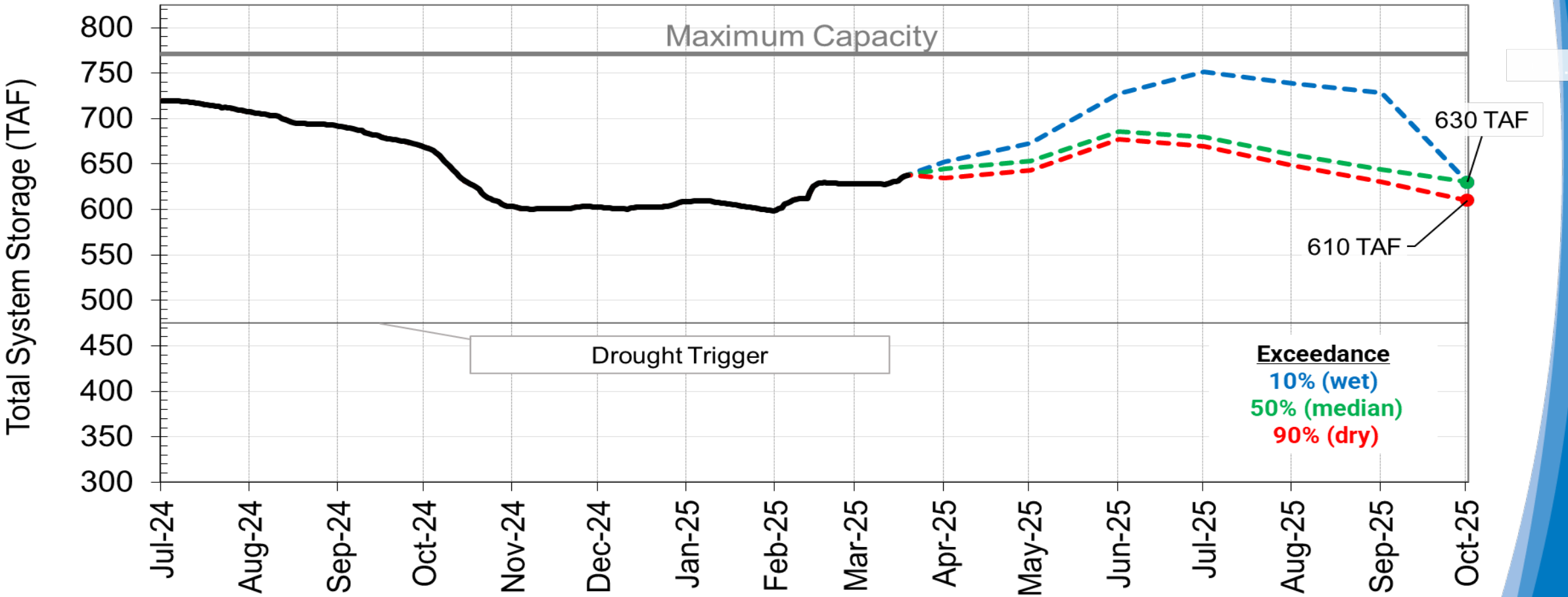
Projected Precipitation

Mokelumne Precipitation Rainfall Year 2025



End of Season Storage

2025 Total System Storage Projections





Questions?



WATER SUPPLY ENGINEERING DAILY REPORT

Wednesday, March 19, 2025

RESERVOIR STORAGE AND ELEVATION

	<u>WATER SURFACE</u>		<u>STORAGE</u>		<u>MAXIMUM CAPACITY</u>			
	<u>Elevation</u>							
	n	+Gain		+Gain	Elevation	Storage	Release	Spill
	<u>Feet</u>	<u>-Loss</u>	<u>Ac-Ft</u>	<u>-Loss</u>	<u>Feet</u>	<u>Ac-Ft</u>	<u>Cfs</u>	<u>Cfs</u>
<u>MOKELUMNE</u>								
Pardee	556.88	0.38	180670	780	567.65	203795	426	0
Camanche	221.83	0.04	320730	260	235.5	417120	330	0
<u>EAST BAY</u>								
Briones	574.88	0	58080	0	576.14	58960	0	0
Chabot	223.26	0	9040	0	227.25	10350	0	0
Lafayette	437.72	0	2910	0	449.16	4250	0	0
San Pablo	300.42	0.03	27720	20	313.68	37915	0	0
Upper San Leandro	459.41	0.02	<u>38460</u>	<u>10</u>	459.98	<u>38905</u>	0	0
<u>Total East Bay Res.</u>			<u>136210</u>	<u>30</u>		<u>150380</u>		
TOTAL SYSTEM STORAGE			637610	1070		771295		

DISTRIBUTION SYSTEM			MOKELUMNE SYSTEM		
<u>DISTRIBUTION RESERVOIRS</u>			<u>AQUEDUCT DELIVERIES</u>		
	Storage	Operating		<u>MG</u>	<u>Flow Conditions</u>
	<u>MG</u>	<u>Capacity</u>	Line 1	30.5	THROTTLE
Today	330	720	Line 2	43.3	THROTTLE
Total Previous Day	<u>337</u>		Line 3	<u>43.7</u>	<u>THROTTLE</u>
Total Change	-7		TOTAL	117.5	182 Cfs
			<u>FSCC to MOK AQUEDUCTS (Measured at Brandt), MG</u>		
<u>WATER PRODUCTION</u>	Million	Capacity	Mok 1	0	
<u>AND DEMAND</u>	<u>Gallons</u>	<u>MGD</u>	Mok 2	<u>0</u>	
Lafayette WTP	8.3	25		0 MG	
Orinda WTP	91	190	<u>RIVER FLOWS AND RELEASES</u>		<u>Cfs</u>
San Pablo WTP	0	30	Mokelumne River Natural Flow		1267
Sobrante WTP	0	50	Pardee Reservoir Inflow		1012
Upper San Leandro WTP	0	45	Pardee Release to Camanche Res.		426
Walnut Creek WTP	15.3	90	Pardee Release to JVID		0
			Camanche Release to Mokel. River		330
<u>TOTAL SURFACE PRODUCTION</u>	114.6	430			
Miscellaneous(Estimated)	0.4		<u>PG&E CO. STORAGE (Acre-feet)</u>		
<u>TOTAL WATER PRODUCTION</u>	<u>115</u>				Maximum
Change in Distribution System	-7			<u>Storage</u>	<u>Change</u>
Wash Water from Distribution Sys.	0		Old Reservoirs	12659	83
					26560
<u>SYSTEM DEMAND</u>	121.5		Salt Springs Res.	26334	396
East-of-Hills Demand	24.6		Lower Bear Res.	<u>22796</u>	<u>26</u>
West-of-Hills Demand	96.9		Total	61789	505
					220442

RAW WATER TRANSMISSION			PRECIPITATION (Inches)				
	<u>INPUT</u>	<u>DRAFT</u>	<u>THIS YEAR</u>		<u>AVERAGE YEAR</u>		
Briones Res.	0	0	<u>STATION</u>		<u>Today</u>	<u>Season to-Date</u>	<u>Season Total</u>
San Pablo Res.	9	0	USL WTP		0	1.49	17.8
U. San Leandro Res.	0	0	Orinda WTP		0	2.82	25.5
<u>TOTAL</u>	9	0	Lafayette Reservoir		0	1.83	14.8
<u>REMARKS</u>			Walnut Creek WTP		0	1.75	17.88
WID Canal Diversion = 45 cfs			Camp Pardee		0	3.66	13.05
Mokelumne River below WID = 230 cfs			Salt Springs P.H.		0.01	6.12	28.21
			<u>CAPLES LAKE (7,830 FT) DATA</u>				
PG&E data as of 4:00 pm previous date.				<u>Today</u>		<u>Average</u>	
All other data as of midnight.			Snow Depth	90 Inches		71 Inches	
WTP capacities are sustainable rates.			Water Content	23.8 Inches		27.6 Inches	

EAST BAY MUNICIPAL UTILITY DISTRICT