



Water Supply Update

Board of Directors

February 25, 2025

Roberto C. Cortez, Manager of Water Operations



Briefing Topics

- Current Water Supply
- Water Supply Projections

Current Water Supply

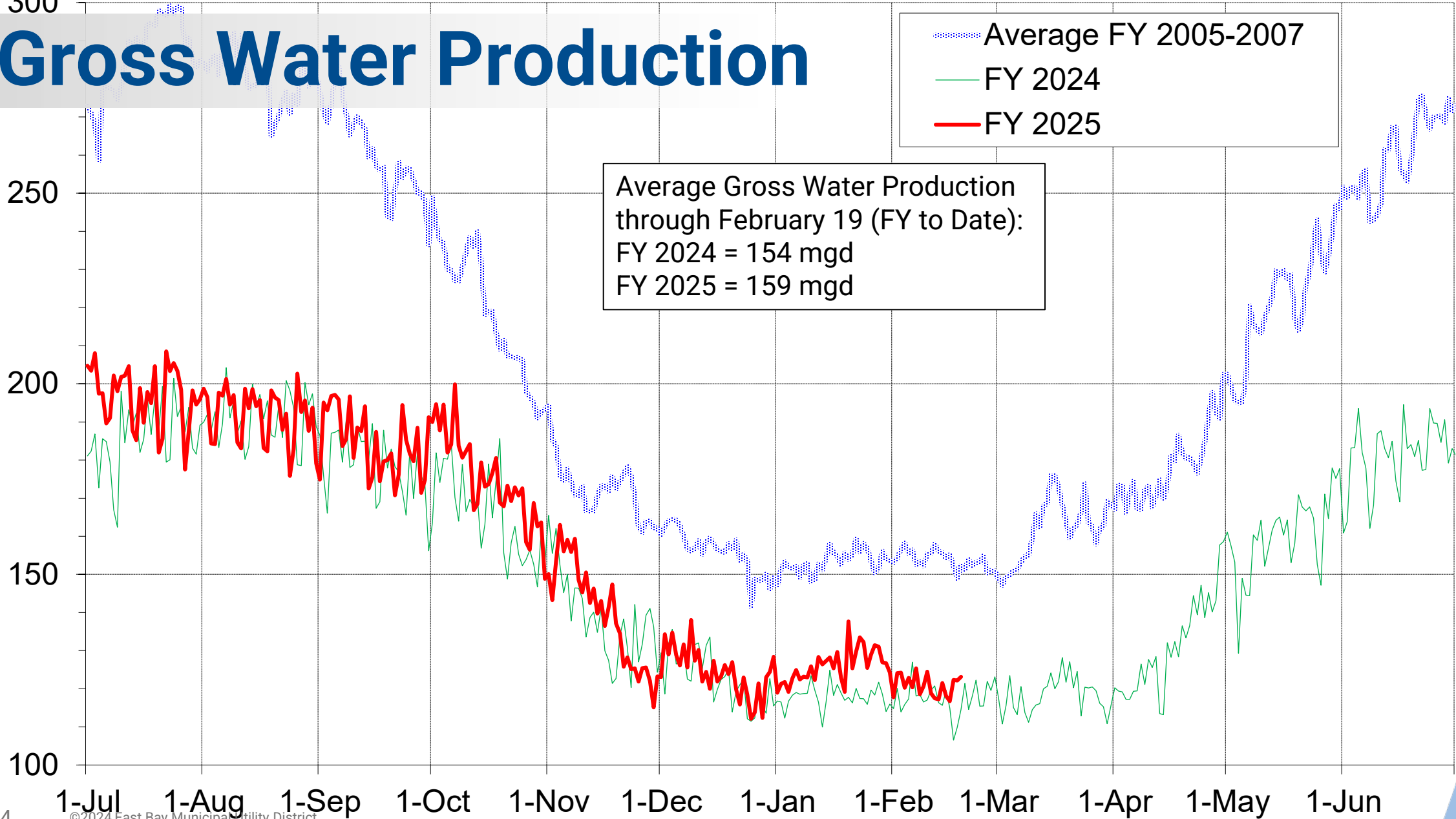
A blue-tinted photograph of a river flowing over rocks, with dense trees in the background. The river is the central focus, with water cascading over numerous dark, rounded rocks. The background is filled with a thick forest of trees, their leaves creating a textured canopy. The overall scene is serene and natural.

Gross Water Production

- Average FY 2005-2007
- FY 2024
- FY 2025

Average Gross Water Production through February 19 (FY to Date):
FY 2024 = 154 mgd
FY 2025 = 159 mgd

Gross Water Production (mgd)



Reservoir Storage

As of 2/19/2025	Current Storage	Percent of Average	Percent of Capacity
Pardee	184,480 AF	102%	91%
Camanche	309,000 AF	115%	74%
East Bay	135,930 AF	104%	90%
Total System	629,410 AF	108%	82%

AF: Acre-Feet



San Leandro Creek Operations

Winter Release Operations

- USL and Chabot Dams operated in conjunction
- USL spilled for 5-days (2/14-2/19). Max spill rate was 30-cfs.
- Current USL release: 60 cfs
- Current Chabot release: 100 cfs
 - Releases typically scheduled during dry forecasted weather*

*Releases expected through mid-March

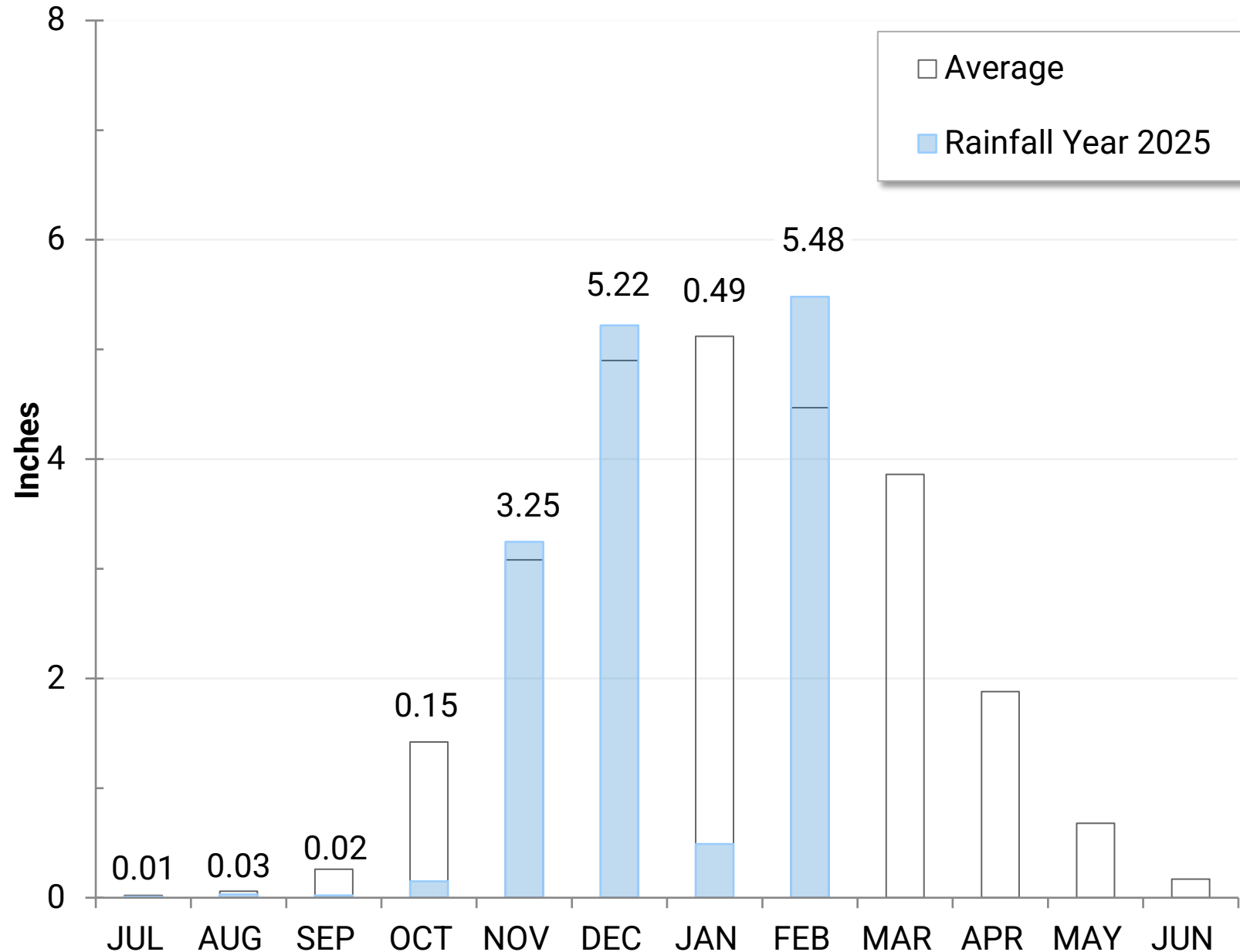
cfs: Cubic Feet per Second

Precipitation as of February 19

East Bay: 14.6"
(79% of average)

Weather Station Details

- USL WTP
- Lafayette Reservoir
- Data collected since 1953

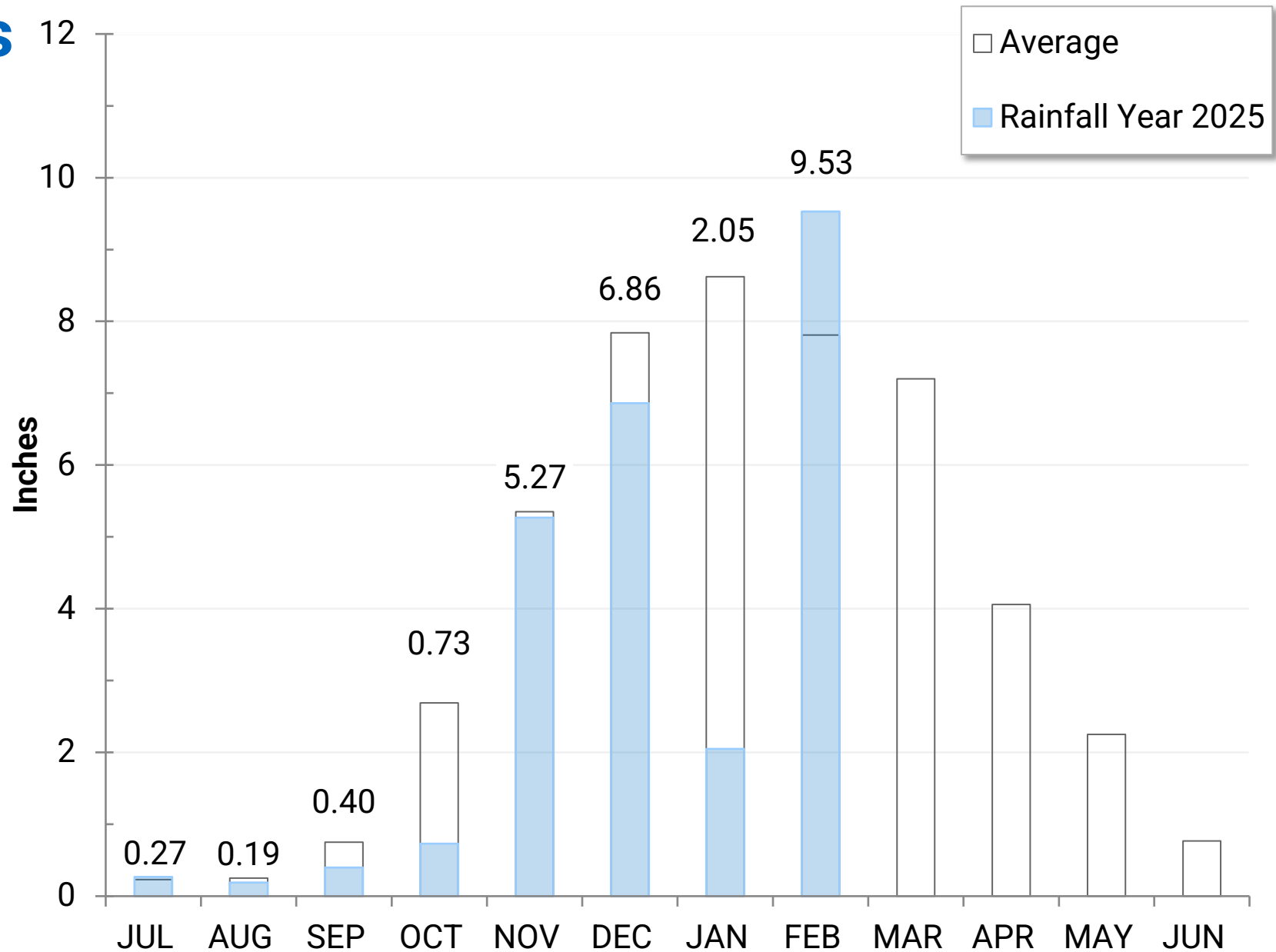


Precipitation as of February 19

Mokelumne: 25.1"
(80% of average)

Weather Station Details

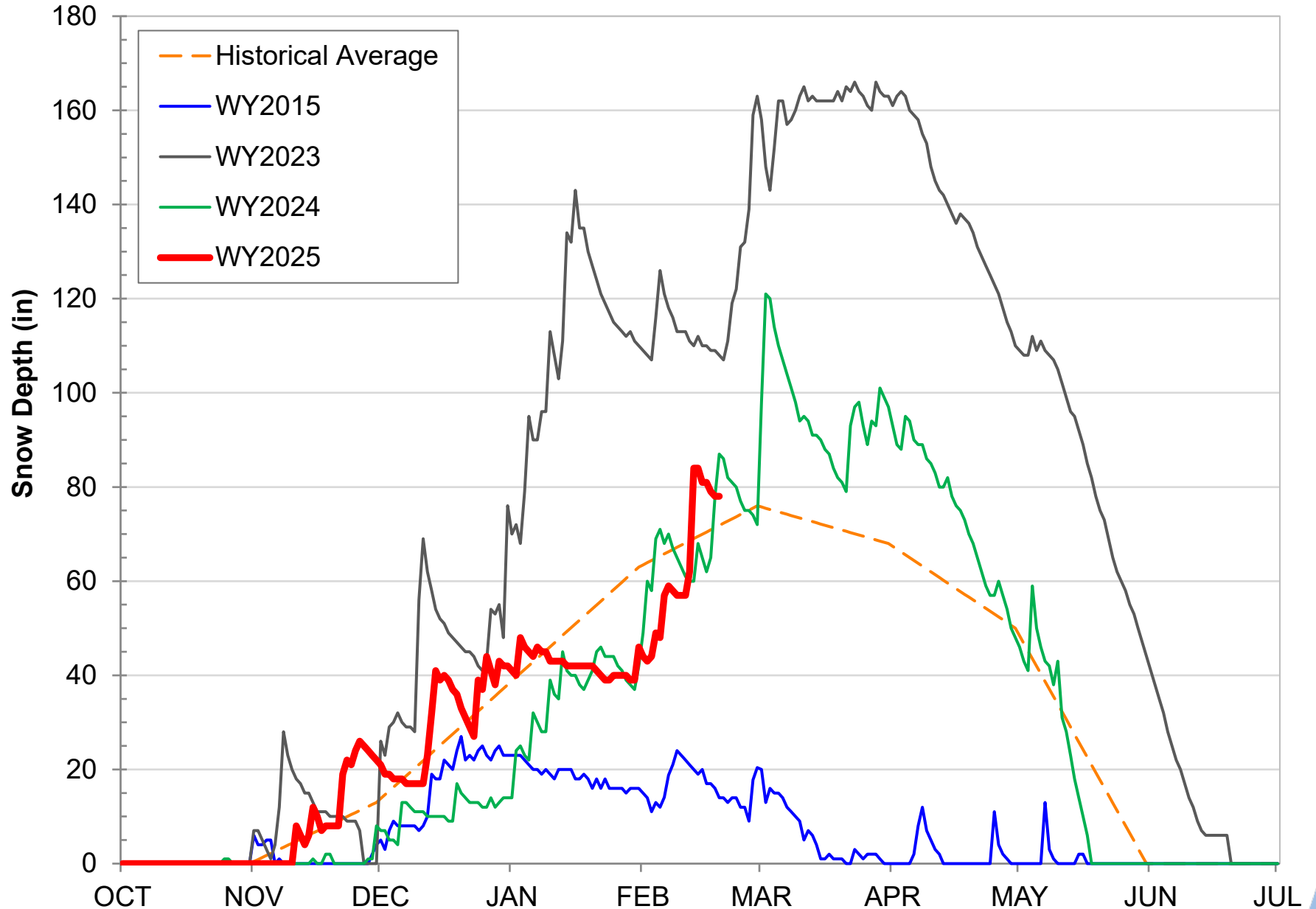
- Calaveras Big Trees
- Caples Lake
- Salt Spring Reservoir
- Tiger Creek Power Station
- Data collected since 1930



Caples Lake Snow as of February 19

Snow Depth – 78”
(109% of average)

Snow Water
Content – 21.4”
(86% of average)

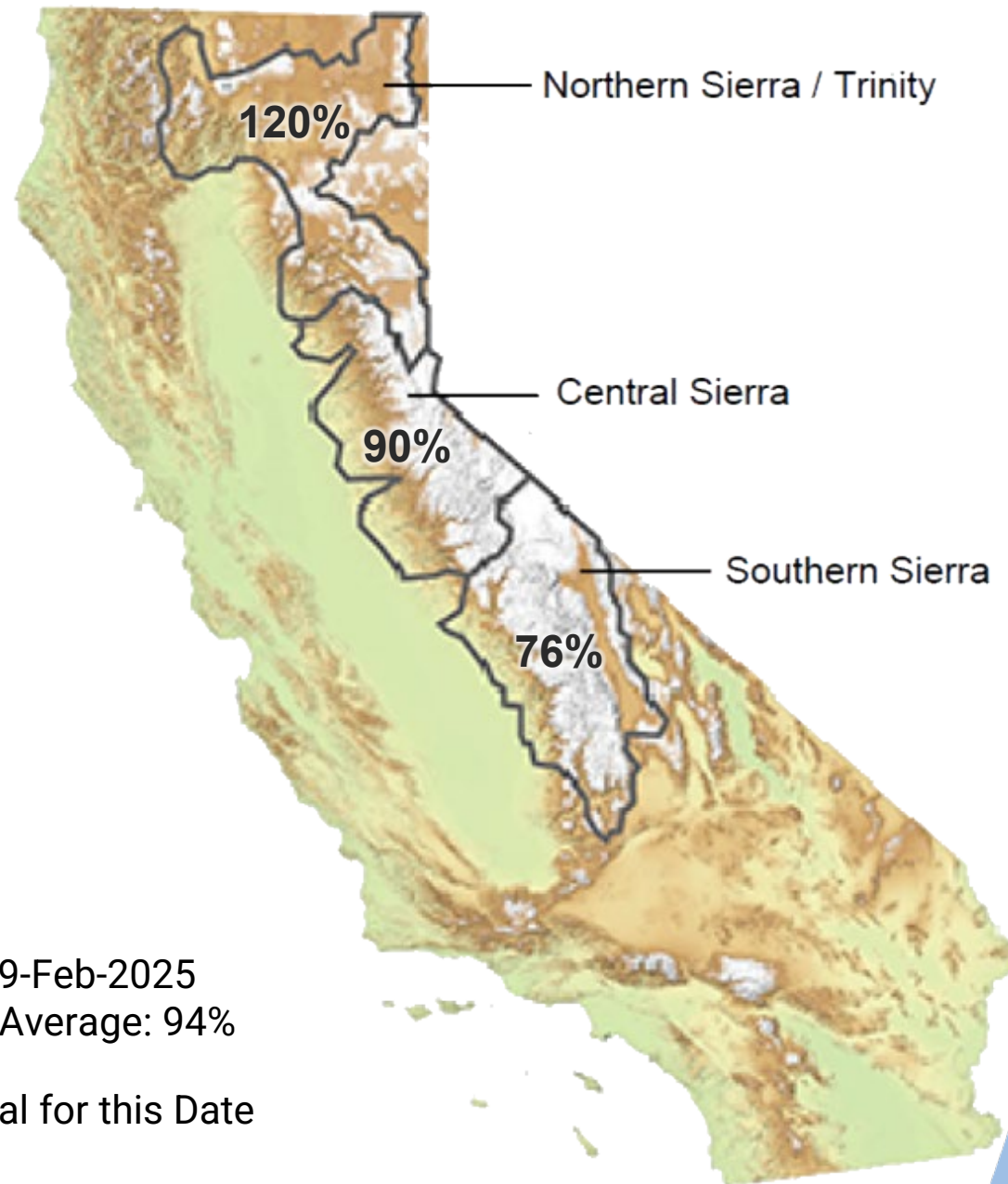




Snowpack as of February 19

Snow Water Equivalent:

90% of Normal in Central Sierra



Data for: 19-Feb-2025
Statewide Average: 94%

% of Normal for this Date

Water Supply Projections

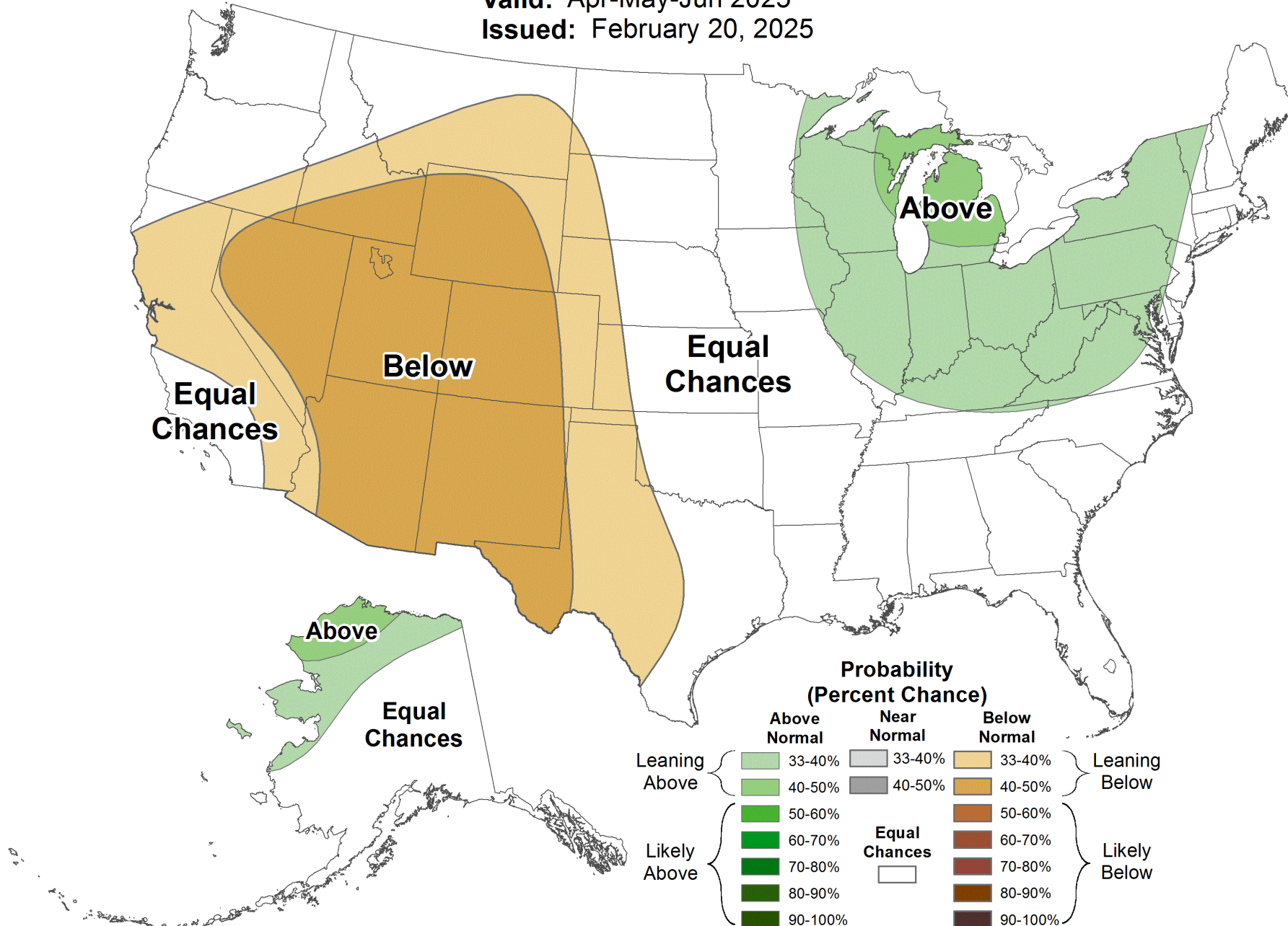


Seasonal Precipitation Outlook



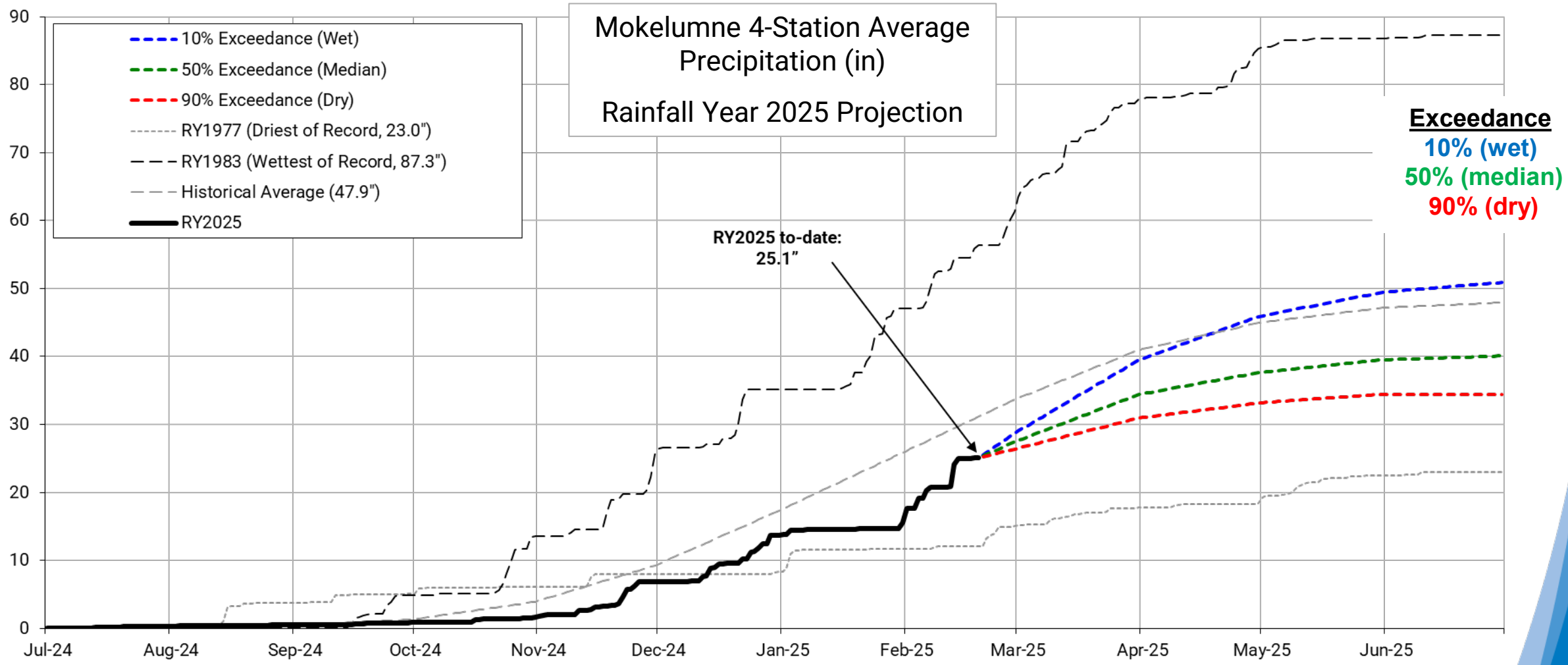
Valid: Apr-May-Jun 2025

Issued: February 20, 2025



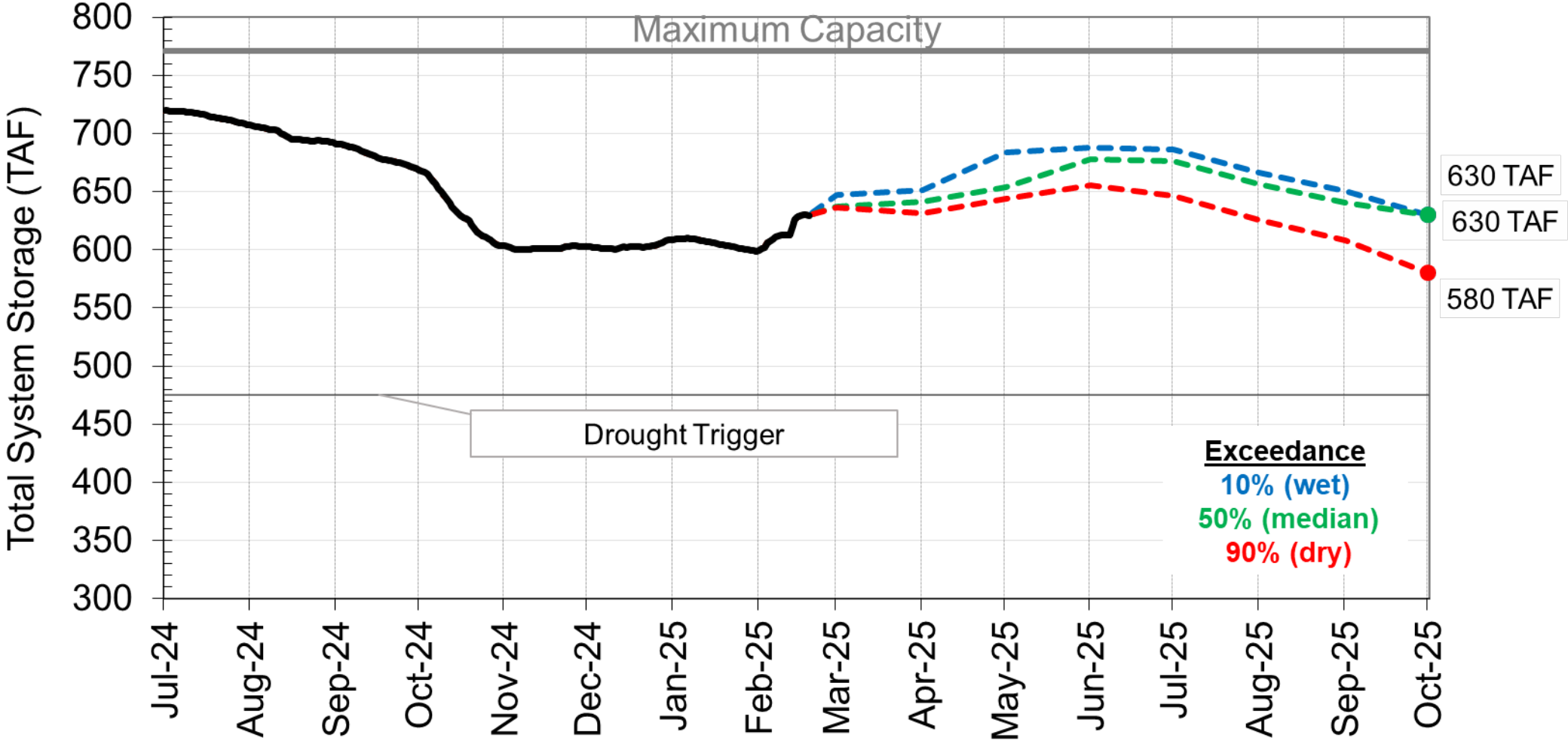
Projected Precipitation

Mokelumne Precipitation Rainfall Year 2025



End of Season Storage

2025 Total System Storage Projections





Questions?

