




Panoramic Hill
Water System Improvements

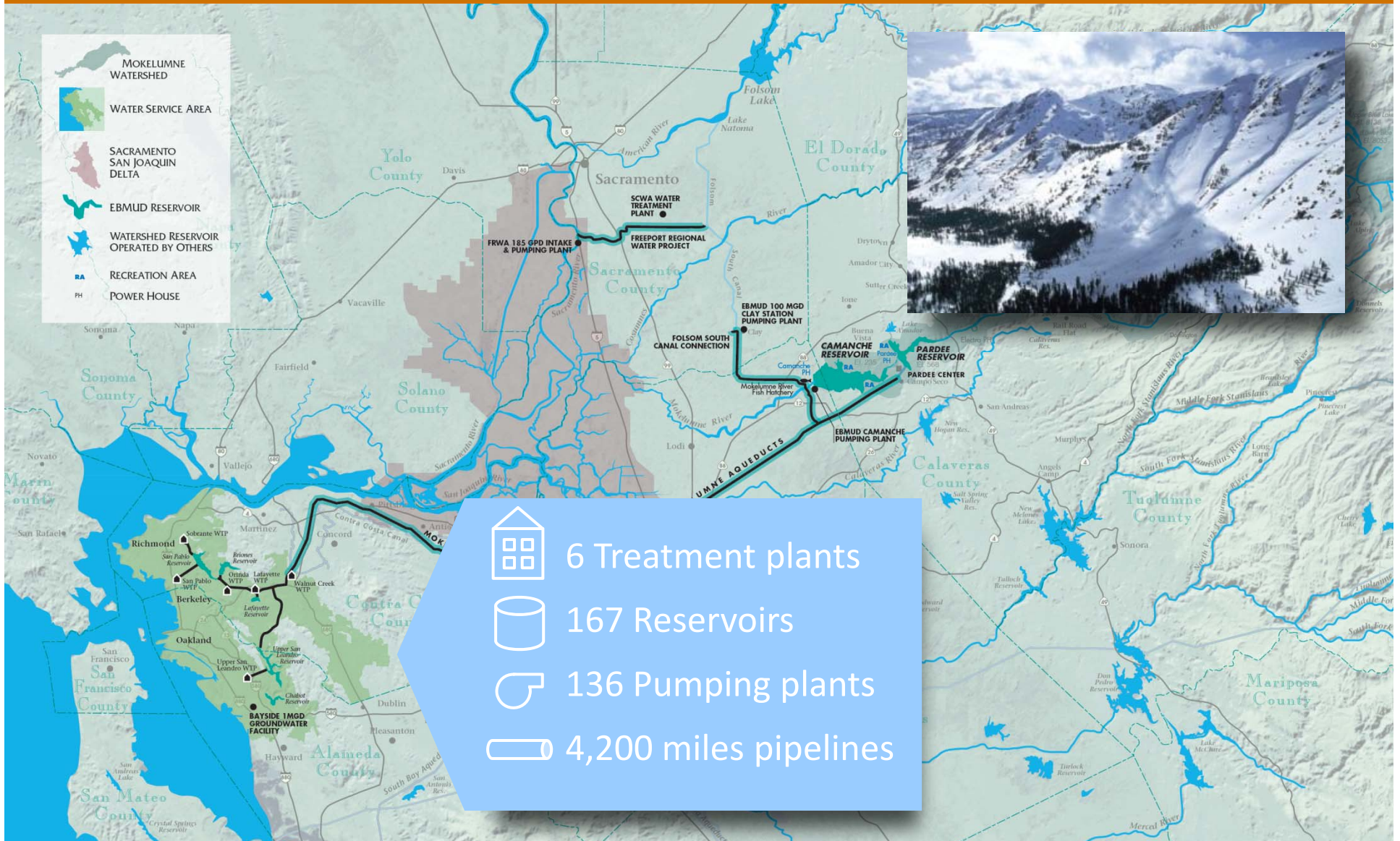
June 6, 2016

Presentation Outline

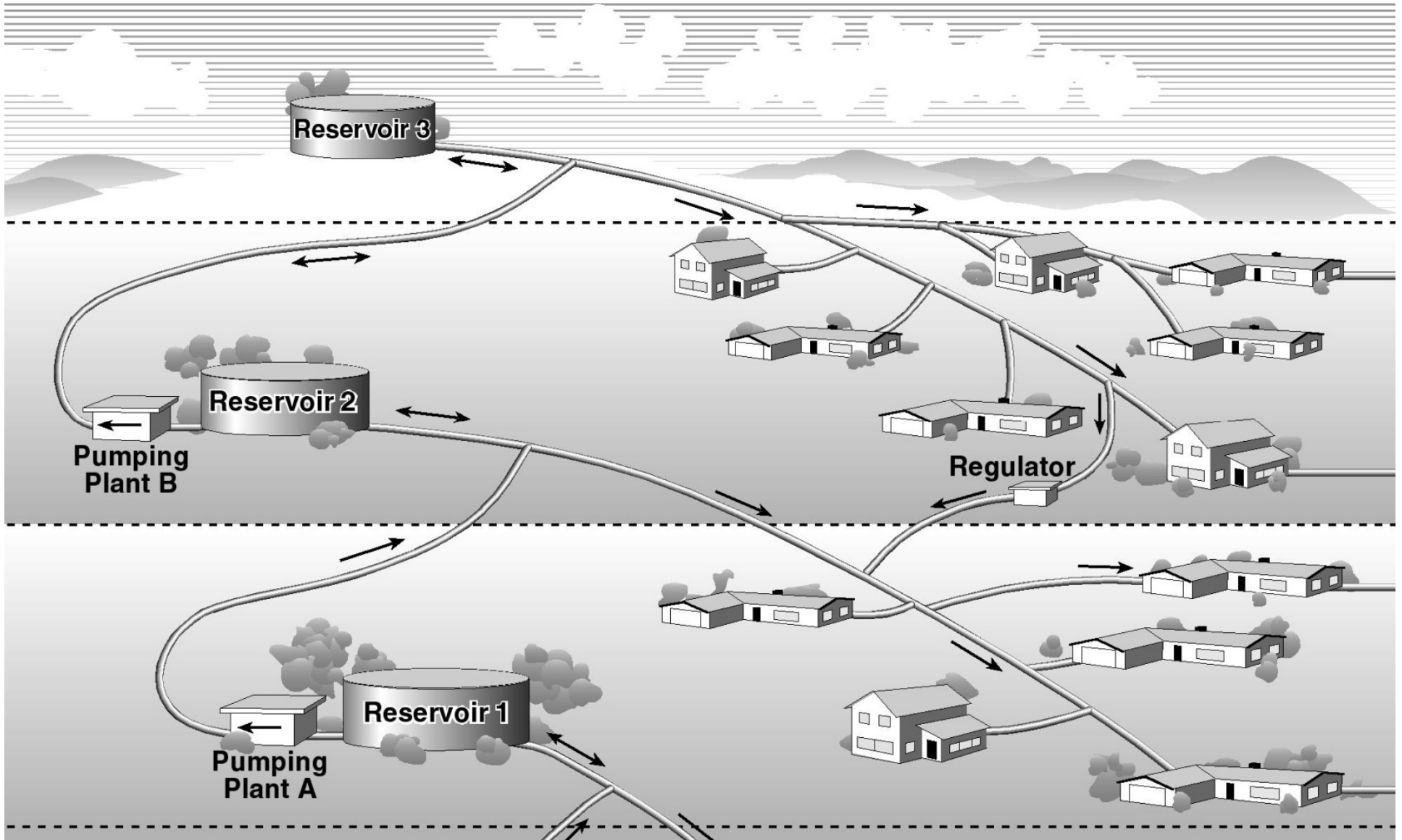


- 
1. EBMUD water system
 2. Project location, need, and scope
 3. Pipeline replacements

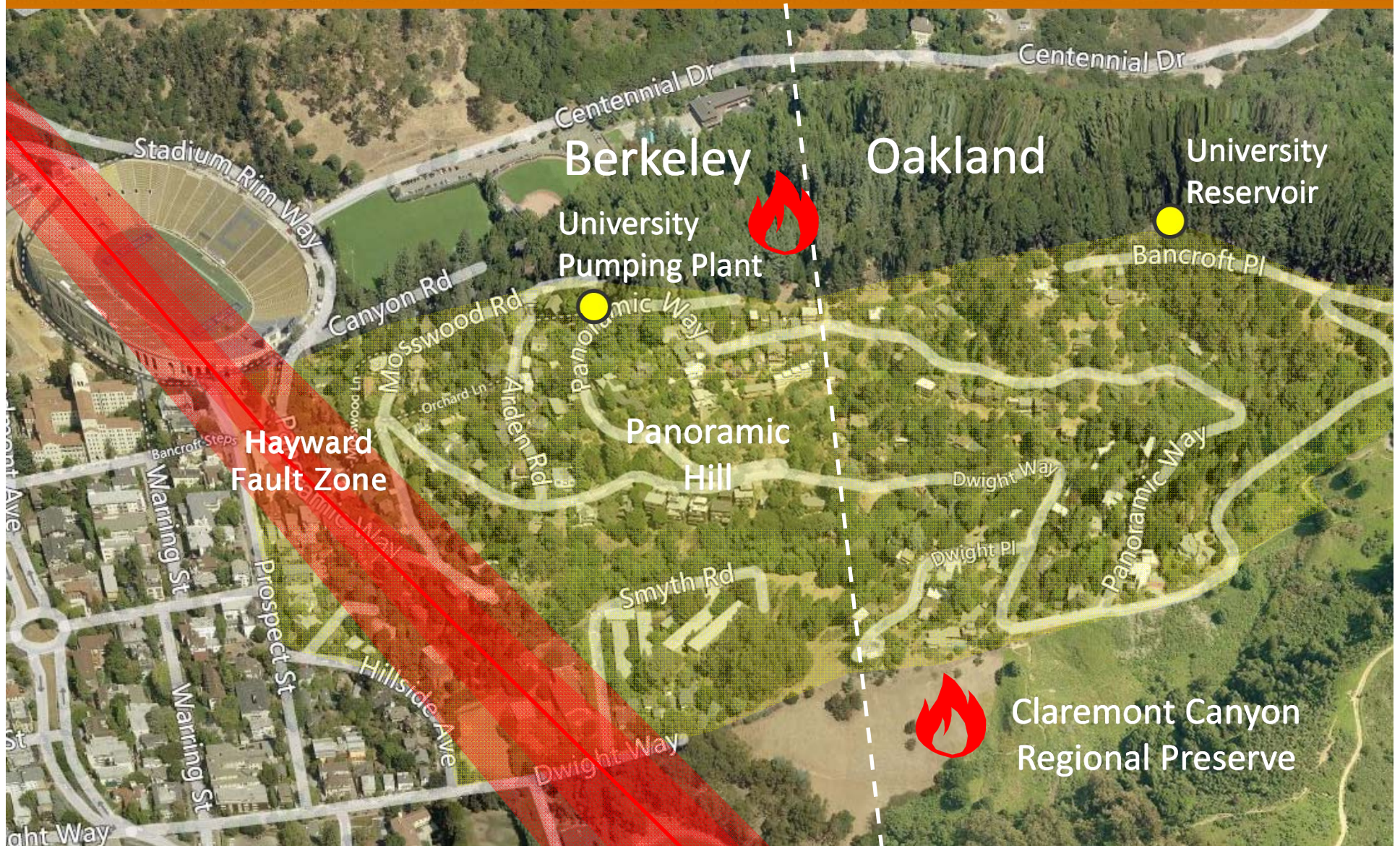
EBMUD Water System



Typical Pressure Zone Schematic



Panoramic Hill



University Reservoir



Reason for Replacement:

- Age
- Condition

University Pumping Plant



EBMUD
University
Pumping Plant



Reason for Replacement:

- Age
- Condition

Benefits:

- Reliability
- Access
- Water quality


Panoramic Way


Schedule



Component	2016				2017				2018				2019	
	Jan-Mar	Apr-Jun	Jul-Sep	Oct-Dec	Jan-Mar	Apr-Jun	Jul-Sep	Oct-Dec	Jan-Mar	Apr-Jun	Jul-Sep	Oct-Dec	Jan-Mar	Apr-Jun
1. Reservoirs		University Reservoir No. 1 and No. 2												
2. Pipelines	Design	Pipeline Replacements					Paving (Oakland)			Paving (Berkeley)				
3. Pumping Plant	Design, Bid, Award, NTP, NTCFW					Pumping Plant Replacement								

Notes:

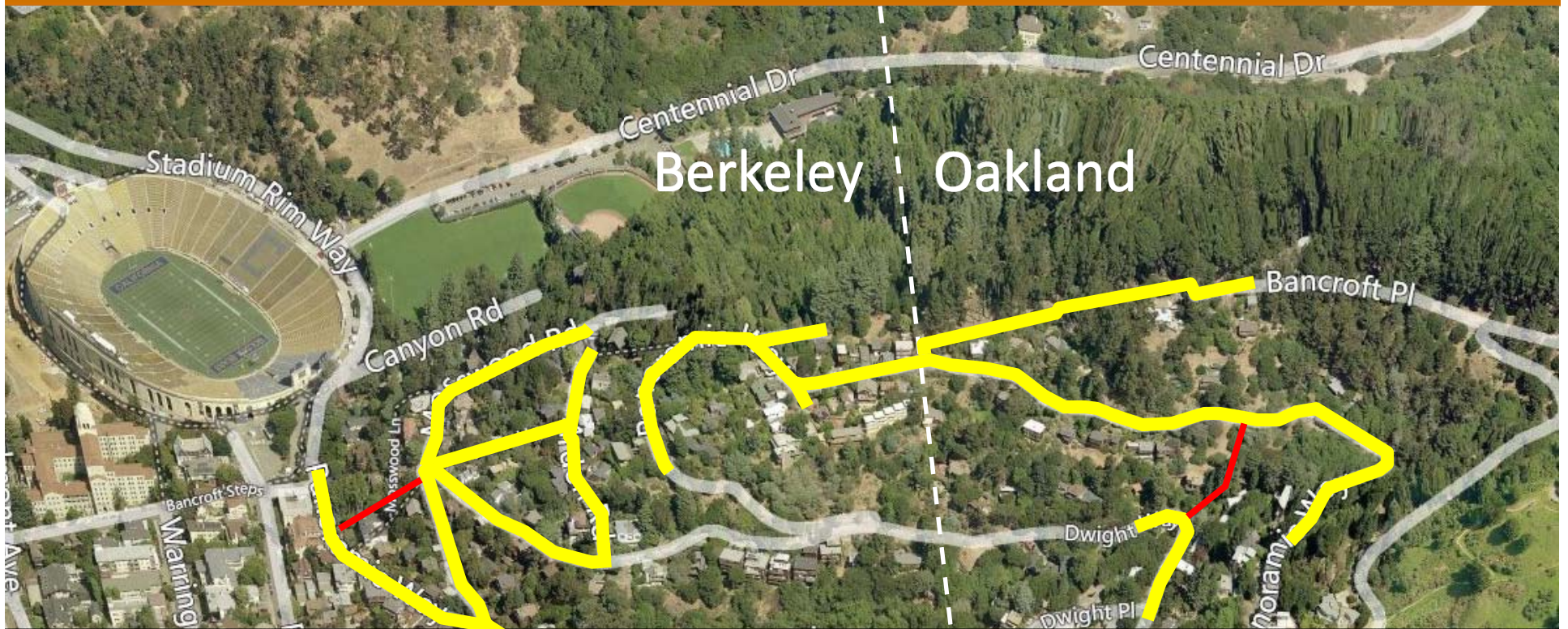
 Design Phase

 Construction Phase

NTP: Notice to Proceed

NTCFW: Notice to Commence Field Work

Pipeline Replacements

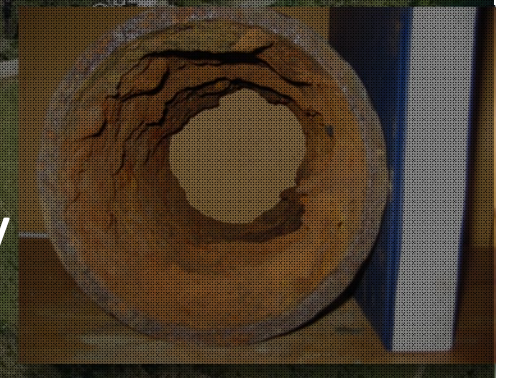


Reason for Replacements:

- Age
- Condition

Benefits:

- Reliability
- Maintainability
- Fire Flow



Pipeline Replacements



Pipeline Replacements



Pipeline Replacements



Phase 3

February 2017 – April 2017

Pipeline Replacements



Phase 4

May 2017 – August 2017

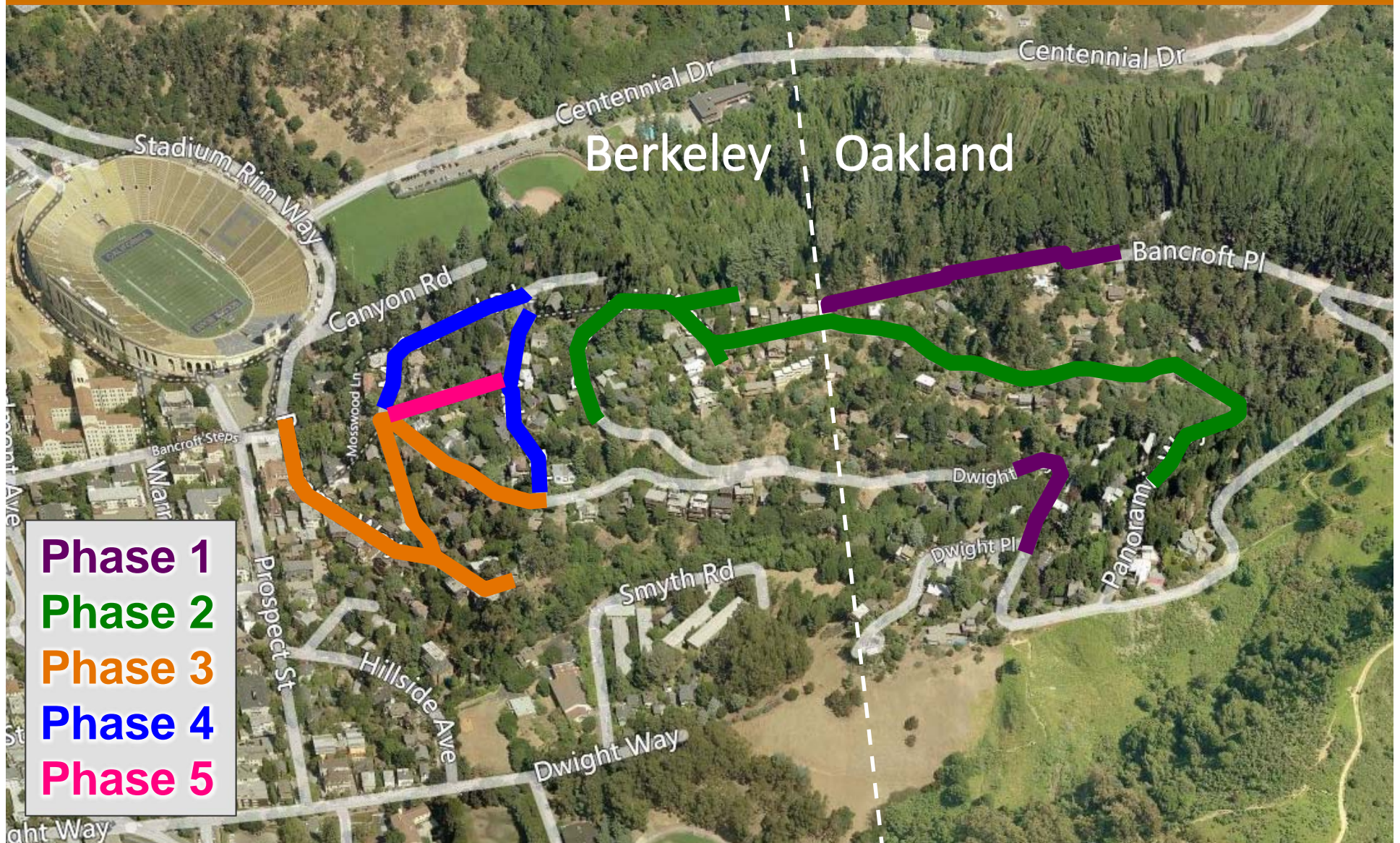
Pipeline Replacements



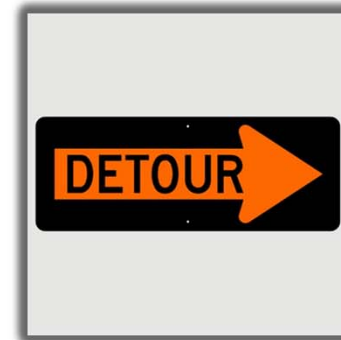
Phase 5

Schedule to be provided later

Pipeline Replacements



Road Closures



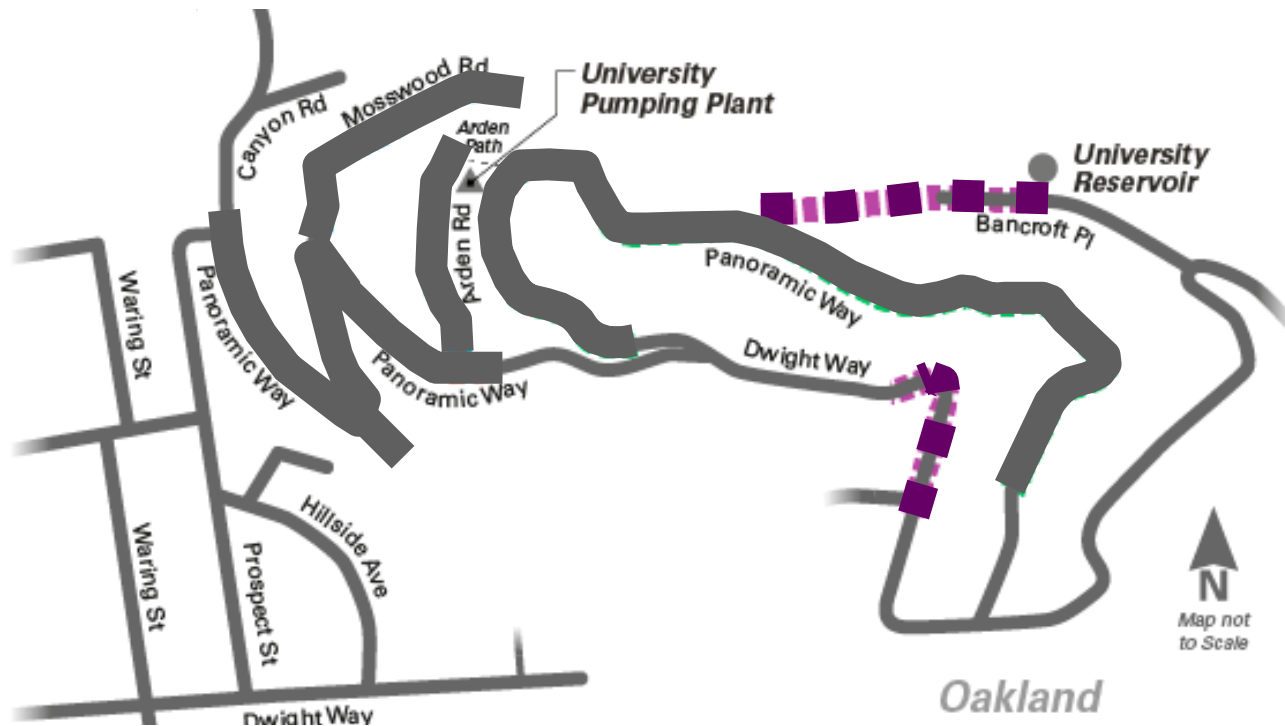
Closure dates and times will be posted at:

www.ebmud.com/panoramic-hill

Road Closures



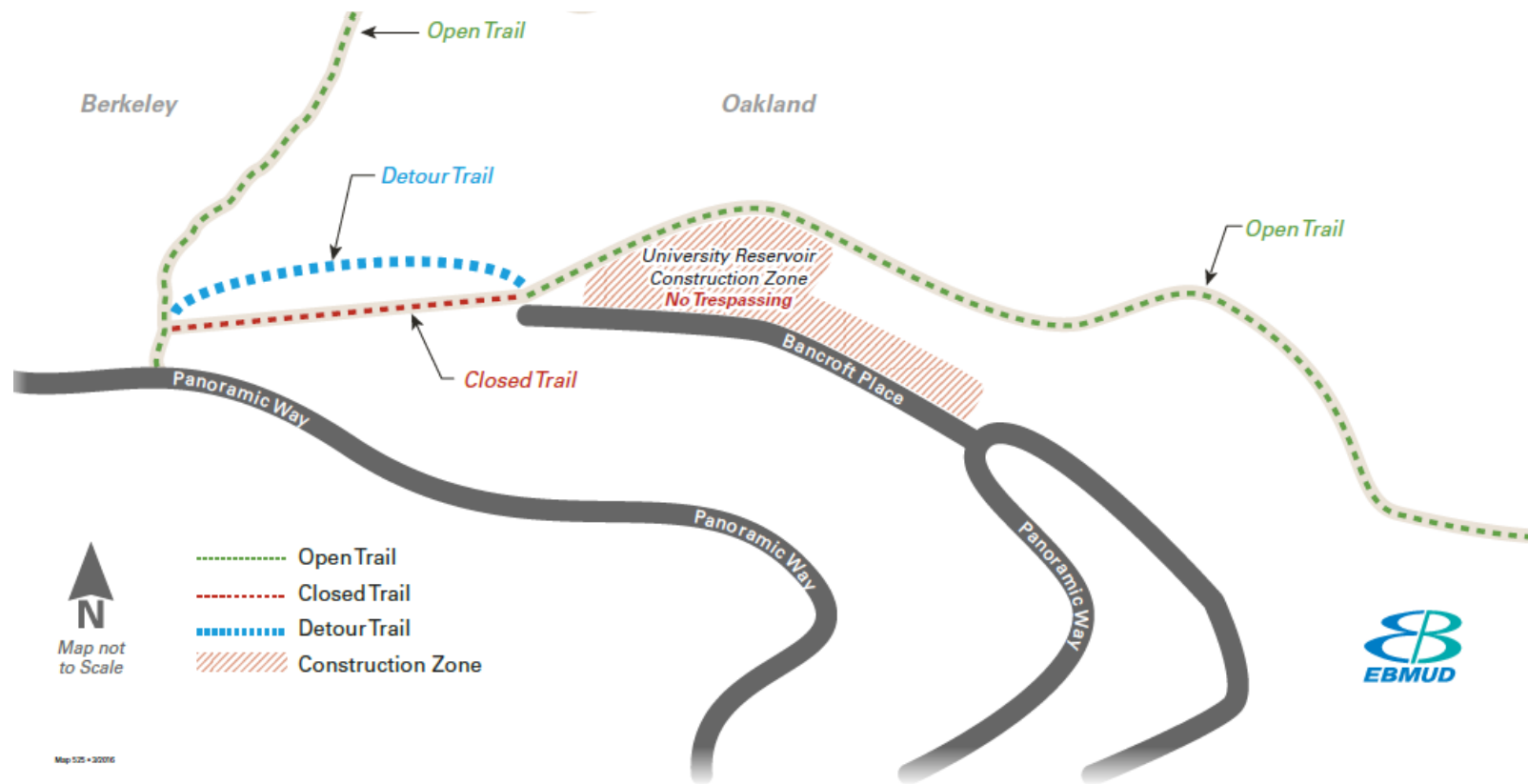
Phase 1 Road Closure
Monday – Friday: 9 am – 4 pm
June 2016 – September 2016



Upper Jordan Trail Detour



Phase 1 Trail Closure June 2016 – September 2016

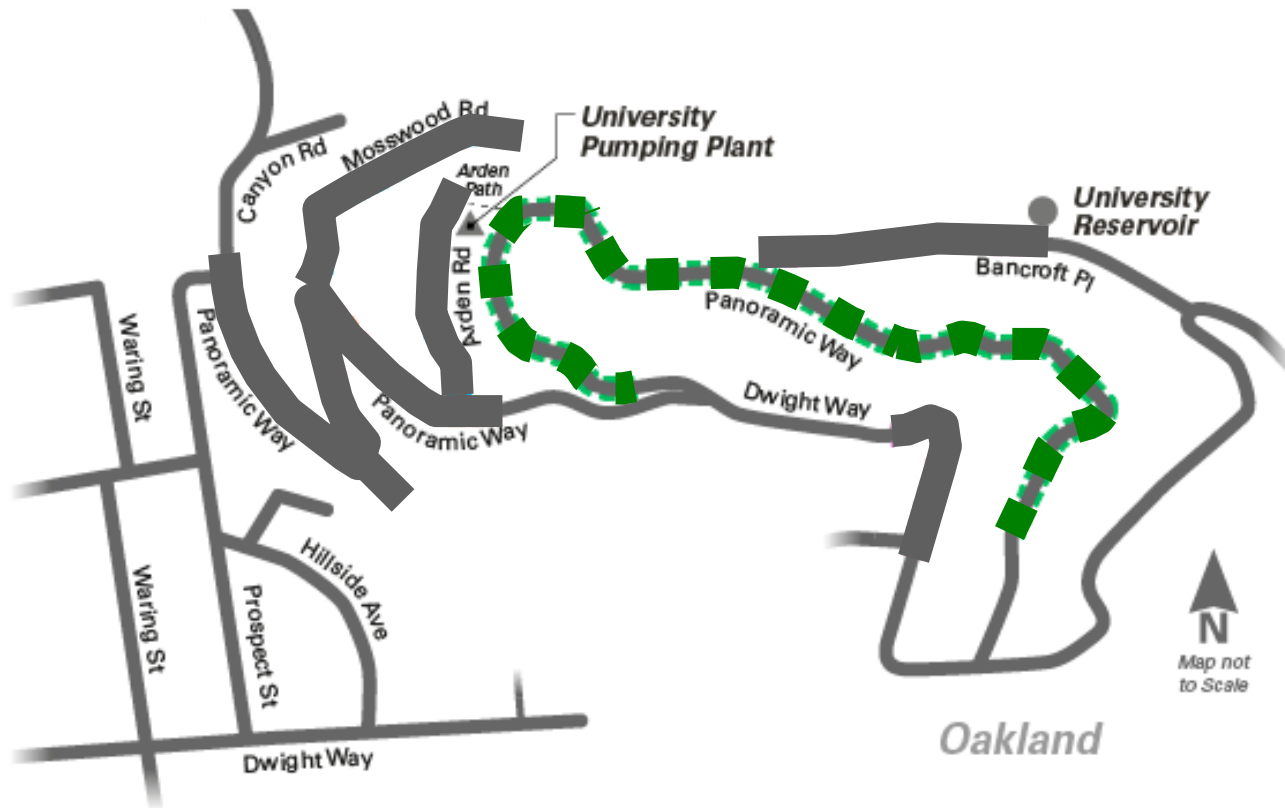


Road Closures



Phase 2 Road Closure

Monday – Friday: 9 am – 4 pm
September 2016 – January 2017

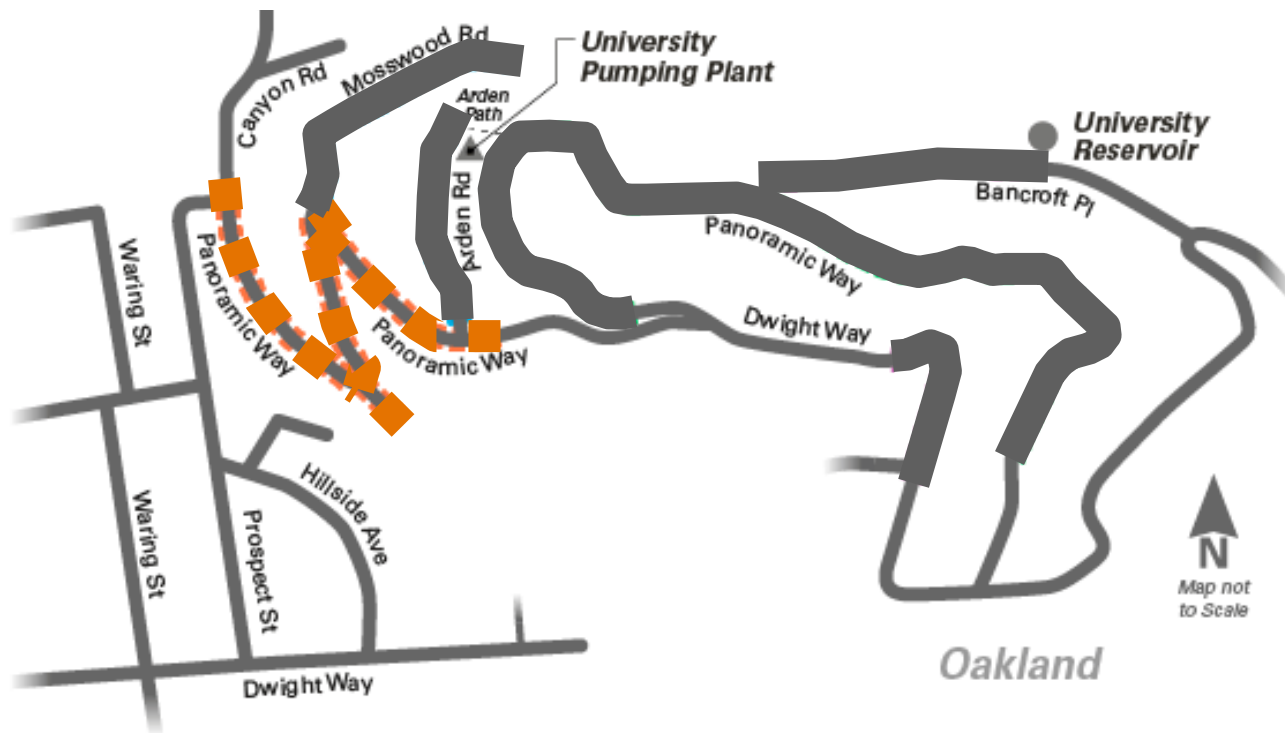


Road Closures



Phase 3 Road Closure

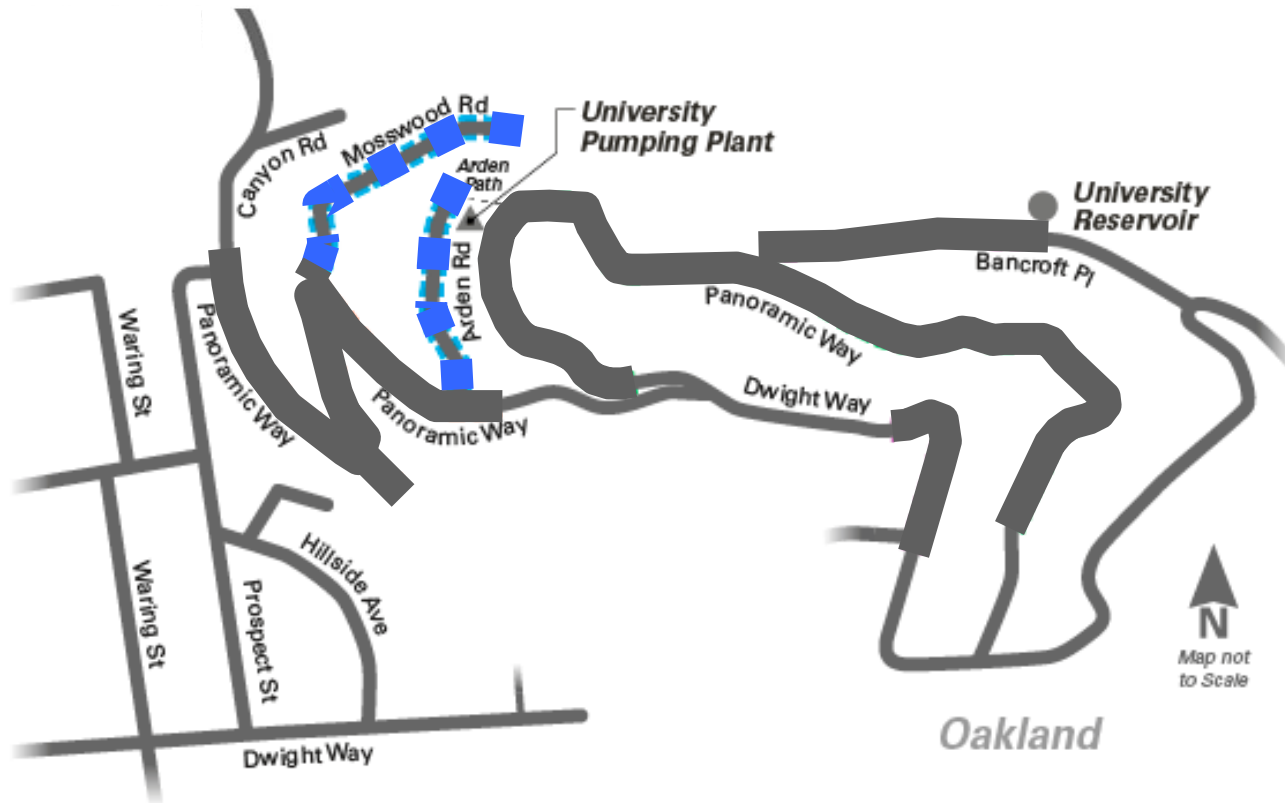
Monday – Friday: 9 am – 12 pm, 1 pm – 4 pm
February 2017 – April 2017



Road Closures



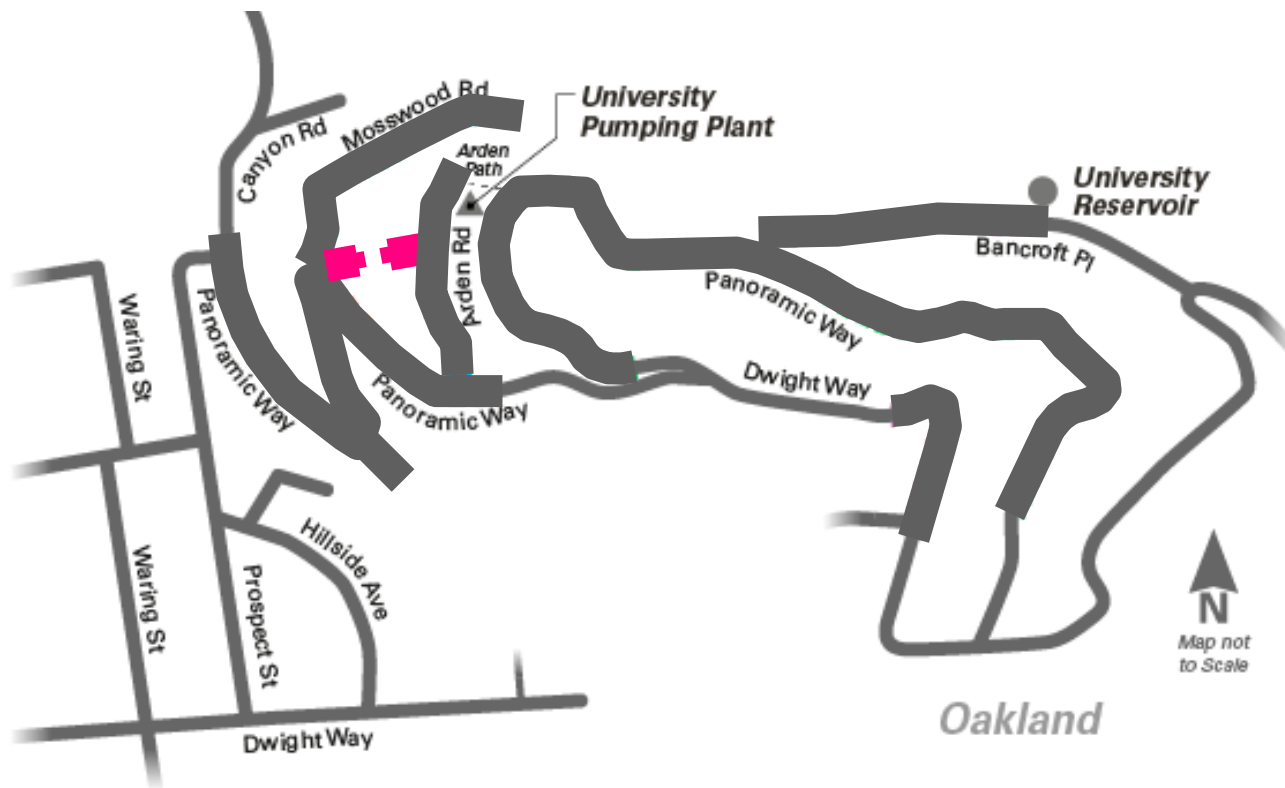
Phase 4 Road Closure
Monday – Friday: 9 am – 4 pm
May 2017 – August 2017



Road Closures



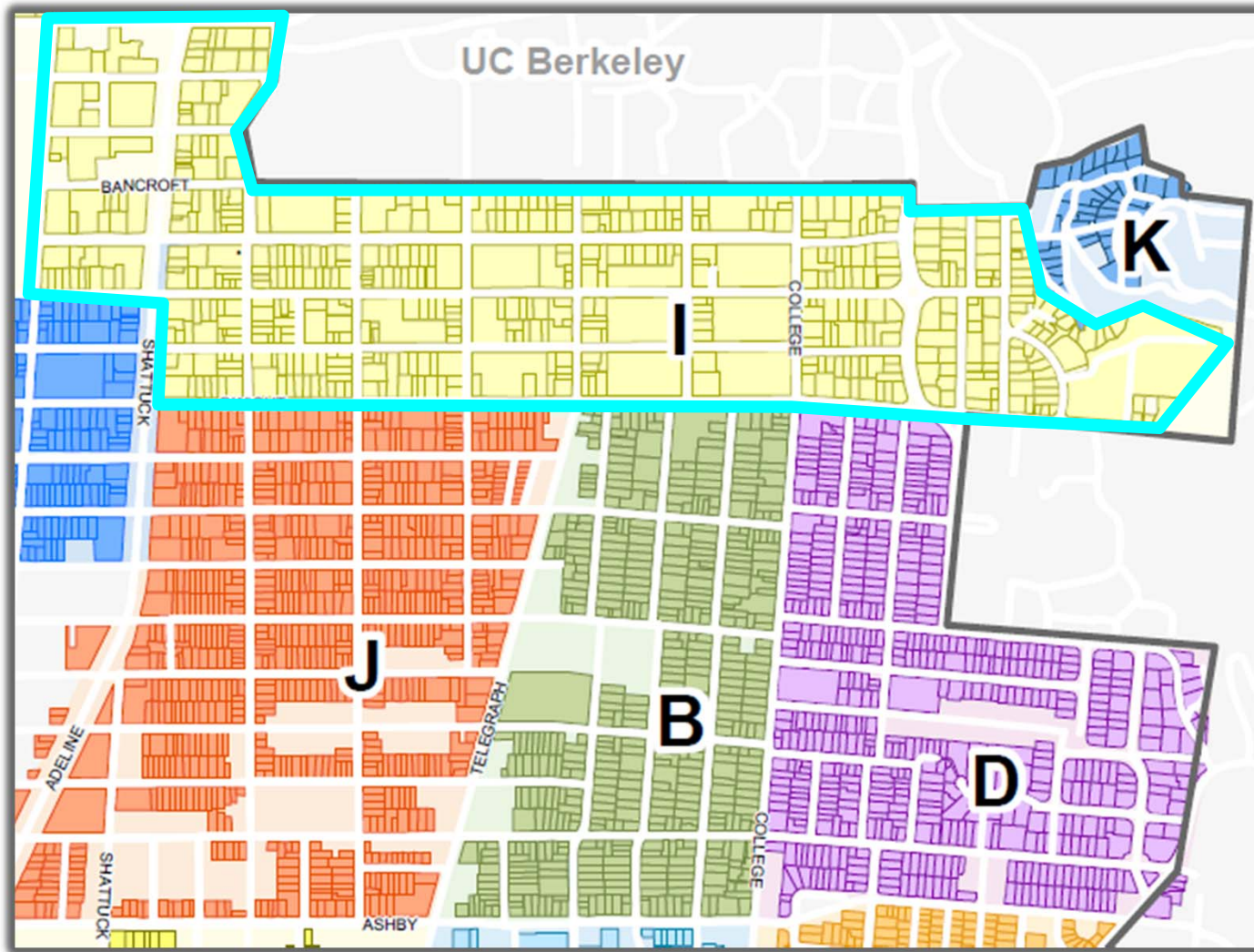
Phase 5 Stair Closure Schedule to be provided later



Emergency Responders



Temporary Parking Passes



http://www.ci.berkeley.ca.us/Public_Works/Transportation/RPP_Zone_Map.aspx

Temporary Parking Passes



A
B
C
D
E
F
G
H
I
J
K
L
M
N

CITY OF BERKELEY 21989

14 DAY

RESIDENTIAL PARKING PERMIT

MONTH DAY YEAR BEGINNING DATE MONTH DAY YEAR ENDING DATE

LICENSE PLATE NUMBER

See reverse for instructions.

Permit Instructions:

Visitor permit must be displayed on the driver's side of the vehicle dashboard

Do not alter dates, license plate numbers or vehicle identification numbers

Permits are valid only in poster RPP zones. This permit does not allow parking at colored curbs or tow away zones, during designated street sweeping times, or other limited zones or at parking meters.

Permits are not refundable or exchangeable. Permits cannot be transferred, sold, duplicated or reproduced. Violators will be prosecuted.

Failure to follow any of these instructions will result in issuance of a citation.

Display face up

For more information, please visit our web site
www.ci.berkeley.ca.us

Temporary Parking Passes



- EBMUD will mail permits to residents
- To request a parking permit, please contact Laura Luong at:
 - 510-287-0140
 - laura.luong@ebmud.com
- Schedule updates will be provided on EBMUD's project website:

www.ebmud.com/panoramic-hill

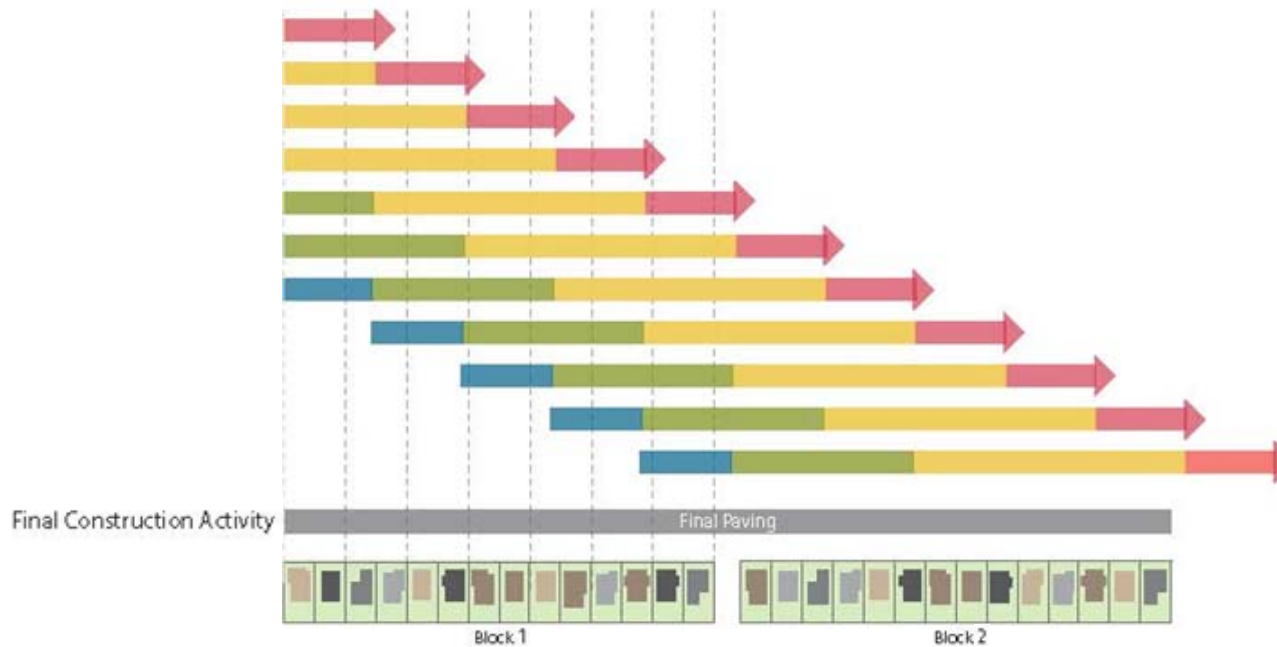
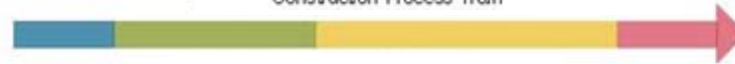
Open-Trench Pipe Installation



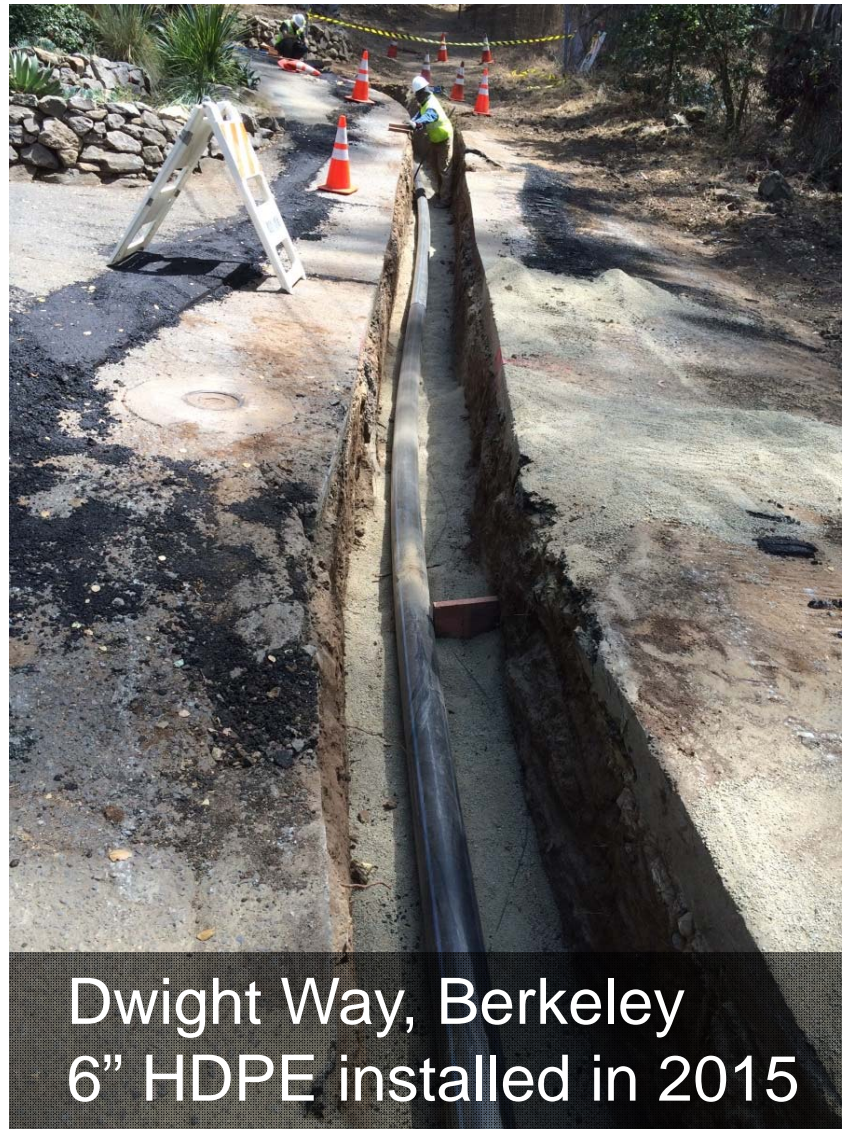
Open Trench Construction Activities



Construction Process Train



Open-Trench Pipe Installation



Dwight Way, Berkeley
6" HDPE installed in 2015

Trench Plating



No trenches will be left open overnight.



Paving



- City of Berkeley paving in summer 2018
- EBMUD will pave City of Oakland streets in late 2017

Next Steps



1. Reservoir construction (in progress)
2. Pipeline construction (June 2016 - August 2017)
3. Pumping plant design (in progress)
4. Pumping plant construction (Fall 2017 - Spring 2019)





**Panoramic Hill
Water System Improvements**

Thank you