



# Water Supply Update

Board of Directors

April 9, 2024



# Water Supply Briefing

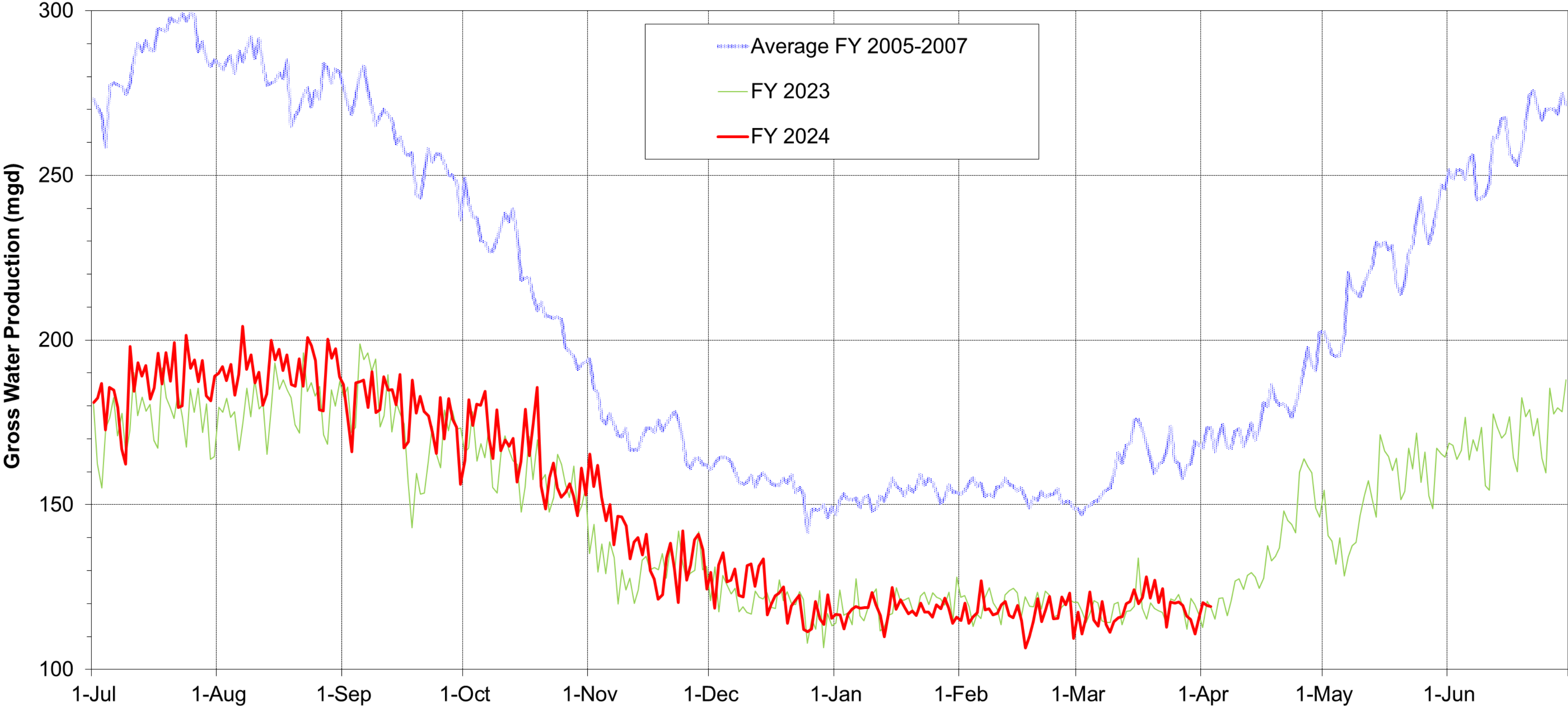
- Current Water Supply
- California Water Supply
- Water Supply Projections





# Current Water Supply

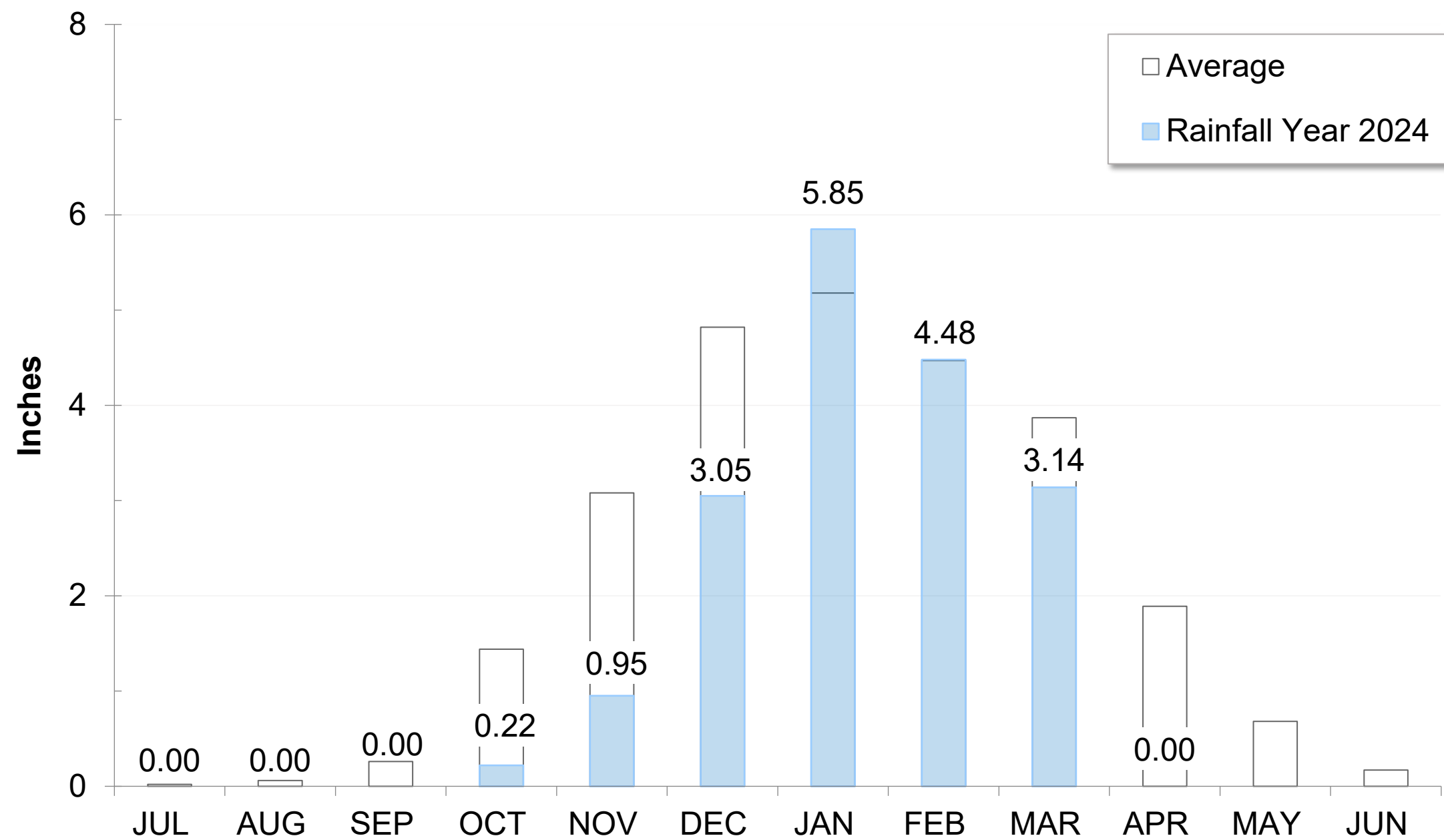
# Gross Water Production





# Precipitation as of April 3

East Bay: 17.69" (74% of average)

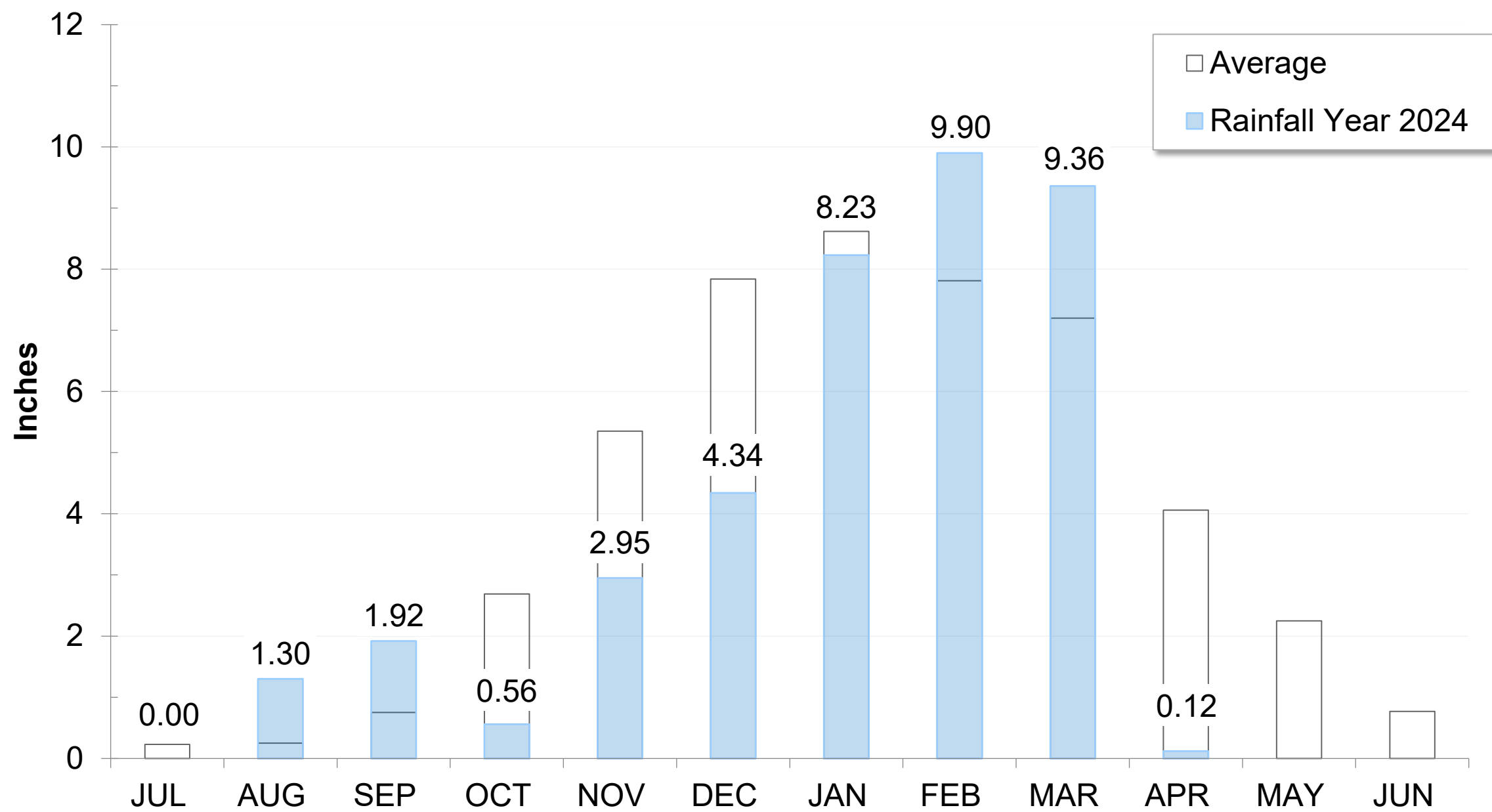


San Pablo Reservoir Weather Station, D. Hansen, February 2024



# Precipitation as of April 3

Mokelumne: 38.68" (93% of Average)





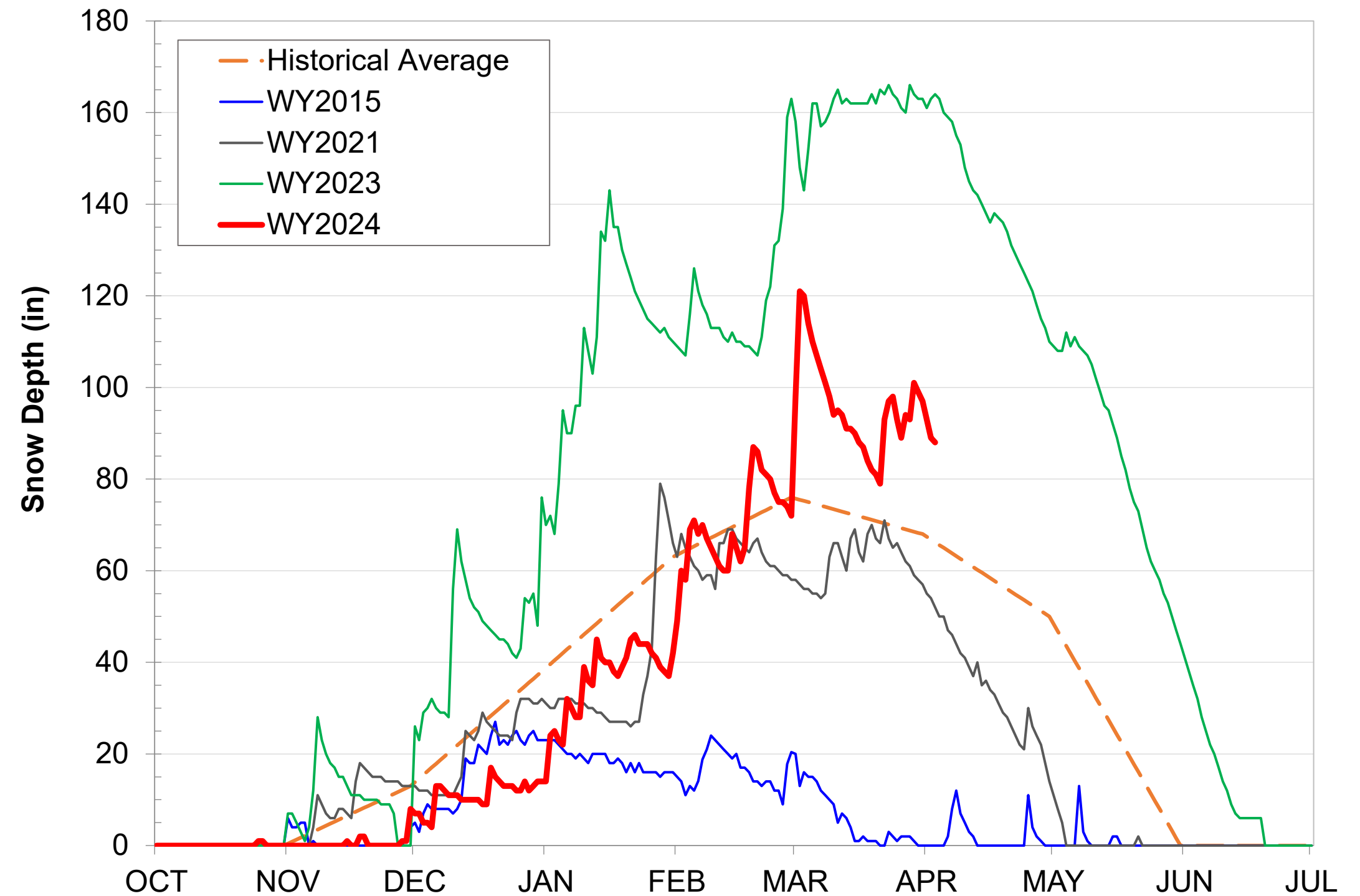
# High-Elevation Snow (Caples Lake) as of April 3

Snow Depth

88" (133% of average)

Snow Water Content

32.76" (118% of average)



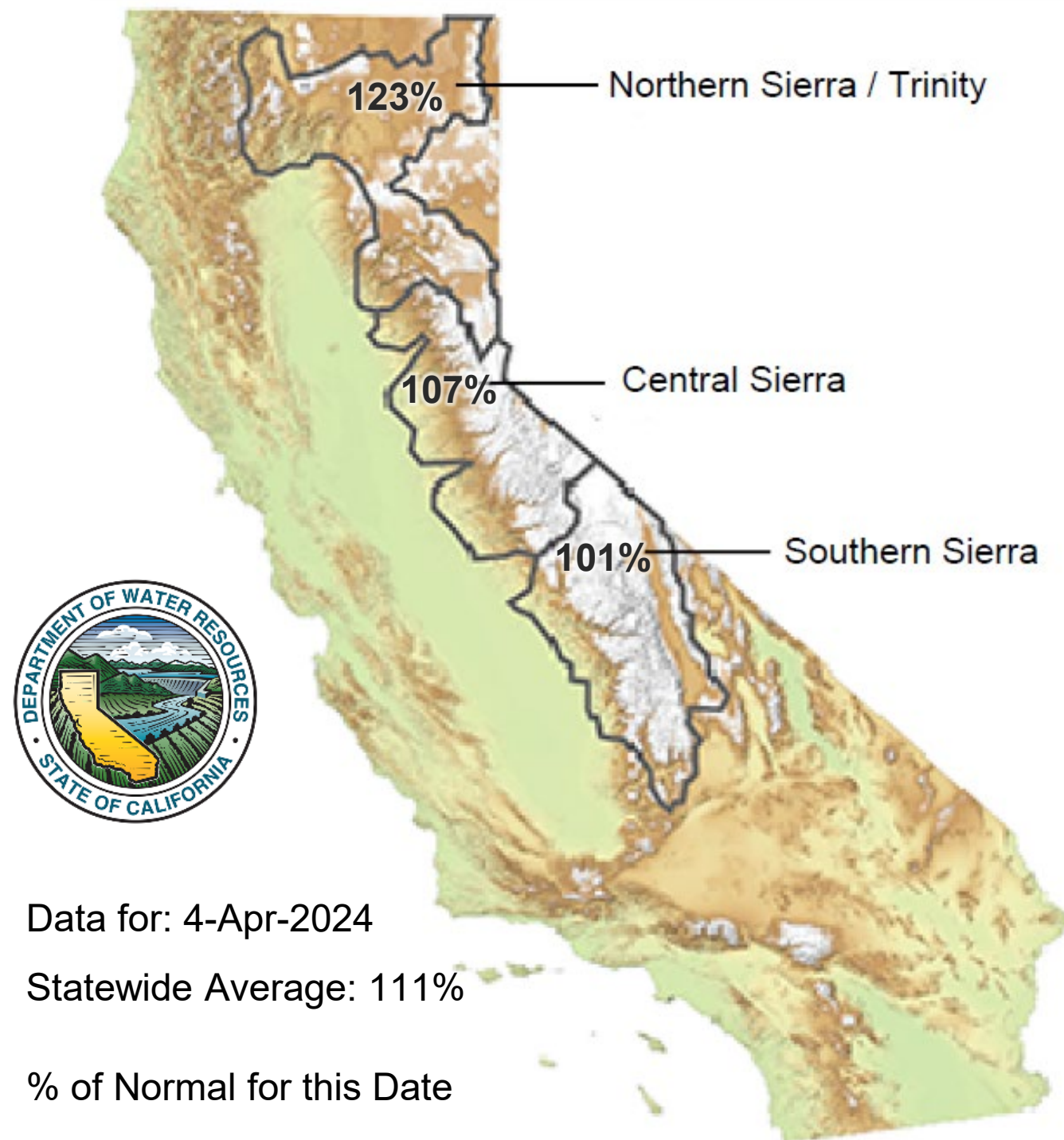
# California Water Supply





# Snowpack as of April 4

Snow Water Equivalent:  
107% in Central Sierra



Data for: 4-Apr-2024

Statewide Average: 111%

% of Normal for this Date



Caples Lake, J. Toone, January 2024



# Water Supply Projections

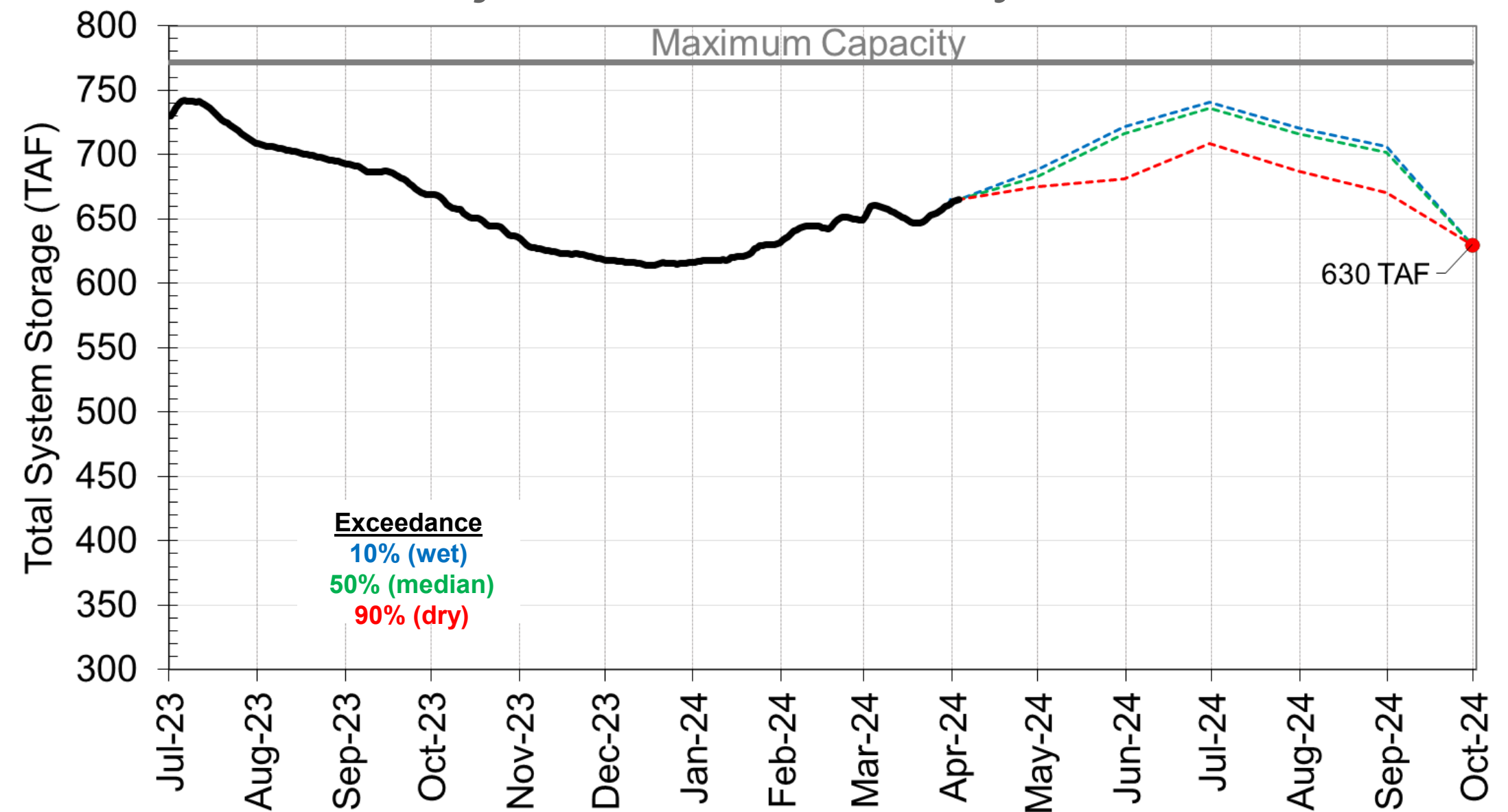


# Total System Storage as of April 3

Current: 665 TAF (106% of Average)

Reservoir	Current Storage, TAF	Percent of Average	Percent of Capacity
Pardee	177	95%	87%
Camanche	349	116%	84%
East Bay	139	100%	92%
<b>Total System</b>	<b>665</b>	<b>106%</b>	<b>86%</b>

Projected: 630 TAF by 9/30



TAF: Thousand Acre-Feet



# Questions



*Camanche Reservoir, J. Wood, March 2024*



**FLOWING  
INTO  
THE  
FUTURE**



# WATER SUPPLY ENGINEERING DAILY REPORT

Wednesday, April 3, 2024

## RESERVOIR STORAGE AND ELEVATION

	<u>WATER SURFACE</u>		<u>STORAGE</u>		<u>MAXIMUM CAPACITY</u>		Release <u>Cfs</u>	Spill <u>Cfs</u>
	Elevation <u>Feet</u>	+Gain <u>-Loss</u>	+Gain <u>Ac-Ft</u>	-Loss <u>-Loss</u>	Elevation <u>Feet</u>	Storage <u>Ac-Ft</u>		
<u>MOKELUMNE</u>								
Pardee	555.21	-0.05	177250	-100	567.65	203795	938	0
Camanche	226.09	0.14	349470	960	235.5	417120	278	0
<u>EAST BAY</u>								
Briones	575.08	-0.01	58220	0	576.14	58960	0	0
Chabot	224.93	0.02	9570	0	227.25	10350	0	0
Lafayette	437.35	-0.01	2870	0	449.16	4250	0	0
San Pablo	305.21	-0.01	31190	-10	313.68	37915	0	0
Upper San Leandro	457.34	-0.09	<u>36900</u>	<u>-70</u>	459.98	<u>38905</u>	0	0
<u>Total East Bay Res.</u>			<u>138750</u>	<u>-80</u>		<u>150380</u>		
<b>TOTAL SYSTEM STORAGE</b>			665470	780		771295		

<b>DISTRIBUTION SYSTEM</b>			<b>MOKELUMNE SYSTEM</b>		
<u>DISTRIBUTION RESERVOIRS</u>			<u>AQUEDUCT DELIVERIES</u>		
	Storage <u>MG</u>	Operating <u>Capacity</u>	Line 1	<u>MG</u>	<u>Flow Conditions</u>
Today	365	720	Line 2	35.2	THROTTLE
Total Previous Day	<u>364</u>		Line 3	<u>44.9</u>	THROTTLE
Total Change	1		TOTAL	110.1	170 Cfs
<u>WATER PRODUCTION AND DEMAND</u>			<u>FSCC to MOK AQUEDUCTS (Measured at Brandt), MG</u>		
	Million <u>Gallons</u>	Capacity <u>MGD</u>	Mok 1	0	
Lafayette WTP	7.7	25	Mok 2	<u>0</u>	
Orinda WTP	78	190		0 MG	
San Pablo WTP	0	30	<u>RIVER FLOWS AND RELEASES</u>		
Sobrante WTP	15.3	50			<u>Cfs</u>
Upper San Leandro WTP	0	45	Mokelumne River Natural Flow		1637
Walnut Creek WTP	20.1	90	Pardee Reservoir Inflow		1075
<u>TOTAL SURFACE PRODUCTION</u>	121.1	430	Pardee Release to Camanche Res.		938
Miscellaneous(Estimated)	0.4		Pardee Release to JVID		0
<u>TOTAL WATER PRODUCTION</u>	<u>121.5</u>		Camanche Release to Mokel. River		278
Change in Distribution System	1		<u>PG&amp;E CO. STORAGE (Acre-feet)</u>		
Wash Water from Distribution Sys.	1				Maximum
<u>SYSTEM DEMAND</u>	119.2			<u>Storage</u>	<u>Change</u>
East-of-Hills Demand	25.8		Old Reservoirs	11309	371
West-of-Hills Demand	93.4		Salt Springs Res.	36009	710
			Lower Bear Res.	<u>8517</u>	<u>33</u>
			Total	55835	1114
					220442

<b>RAW WATER TRANSMISSION</b>			<b>PRECIPITATION (Inches)</b>					
	<u>Ac-ft</u>		<u>THIS YEAR</u>			<u>AVERAGE YEAR</u>		
	<u>INPUT</u>	<u>DRAFT</u>	<u>STATION</u>	<u>Today</u>	<u>This Month</u>	<u>Season to-Date</u>	<u>Season to-Date</u>	<u>Season Total</u>
Briones Res.	0	0	USL WTP	0	0	19.47	22.68	25.33
San Pablo Res.	13	55	Orinda WTP	0	0	24.83	28.81	32.06
U. San Leandro Res.	0	0	Lafayette Reservoir	0	0	15.9	25.42	28.18
<b>TOTAL</b>	<b>13</b>	<b>55</b>	Walnut Creek WTP	0	0	17.54	21.06	23.02
<u>REMARKS</u>			Camp Pardee	0	0.01	17.33	18.66	21.56
WID Canal Diversion = 62 cfs			Salt Springs P.H.	0.08	0.08	38.6	38.81	45.51
Mokelumne River below WID = 165 cfs			<u>CAPLES LAKE (7,830 FT) DATA</u>					
				Today	Average			
PG&E data as of 4:00 pm previous date.			Snow Depth	88 Inches	66 Inches			
All other data as of midnight.			Water Content	32.8 Inches	27.7 Inches			
WTP capacities are sustainable rates.								