



Water Supply Update

Board of Directors

March 12, 2024

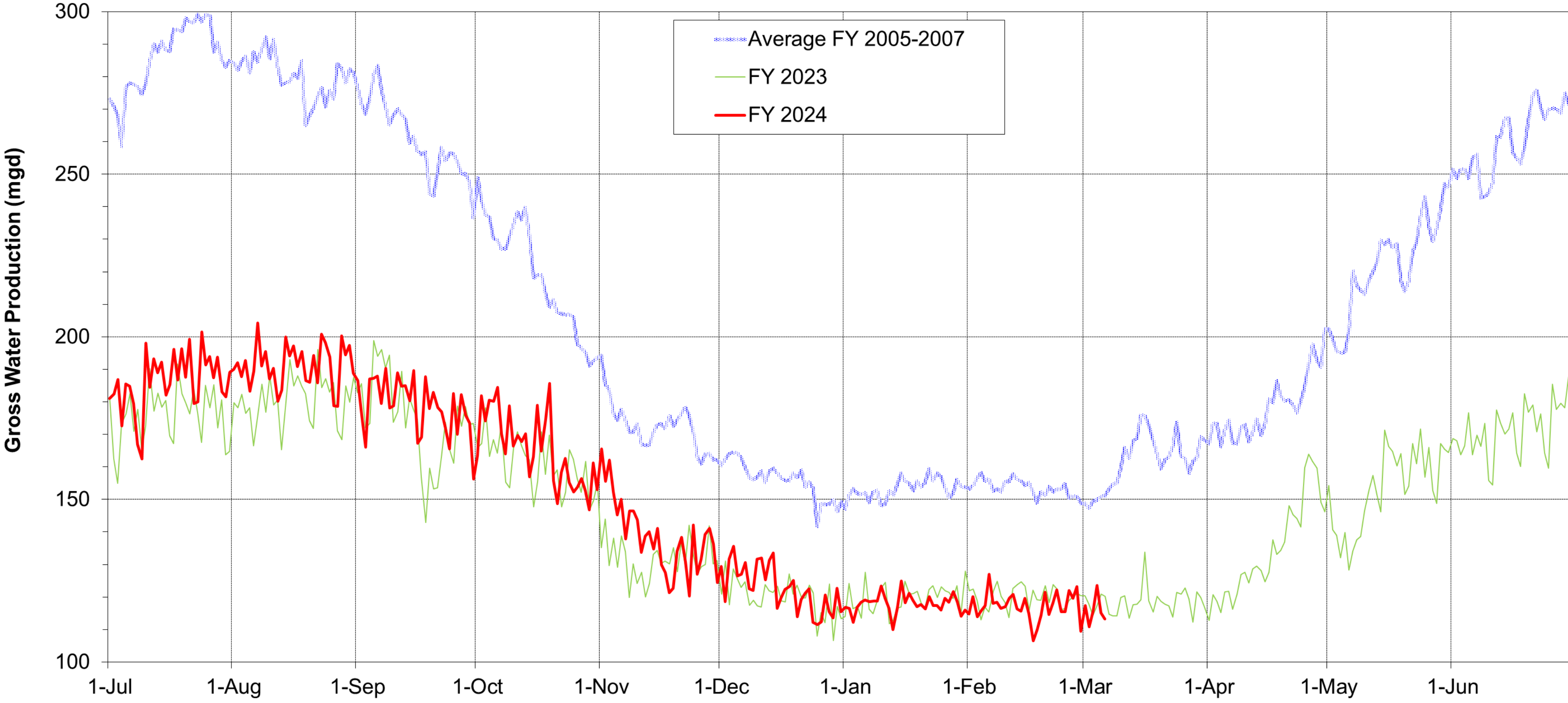
Water Supply Briefing

- Current Water Supply
- California Water Supply
- Water Supply Projections



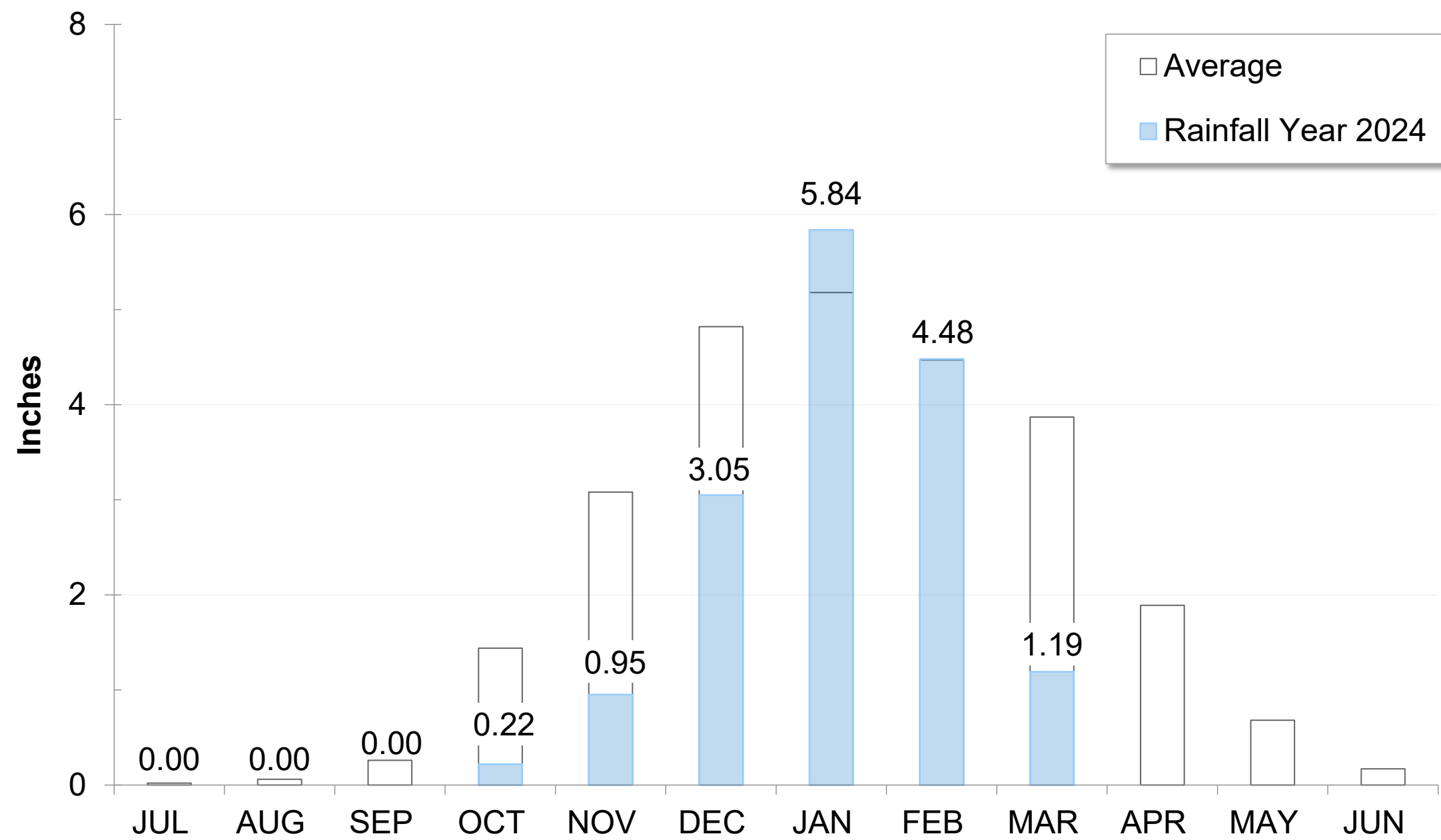
Current Water Supply

Gross Water Production



Precipitation as of March 6

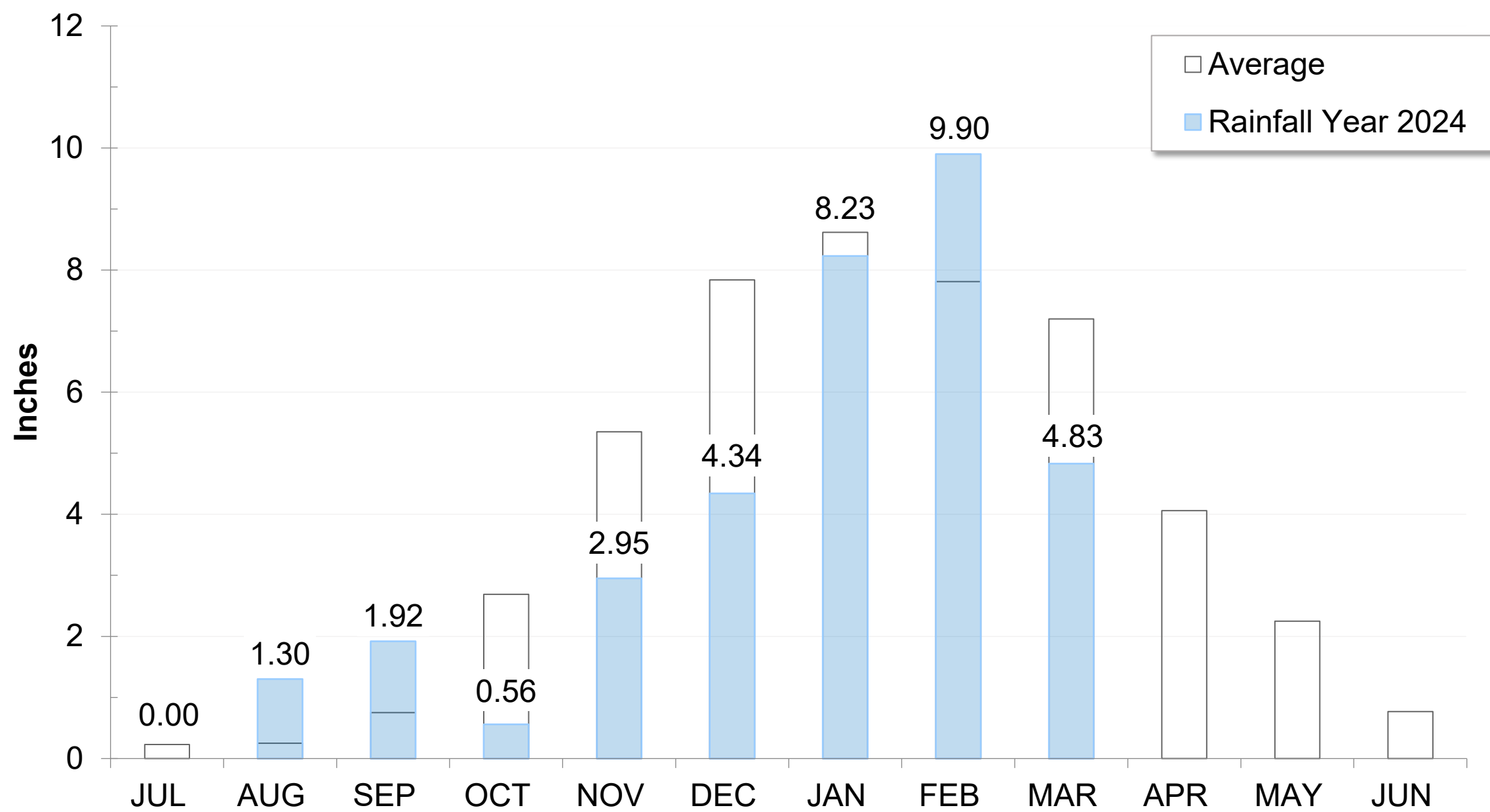
East Bay: 15.73" (76% of average)



San Pablo Reservoir Weather Station, D. Hansen, February 2024

Precipitation as of March 6

Mokelumne: 34.03" (96% of Average)



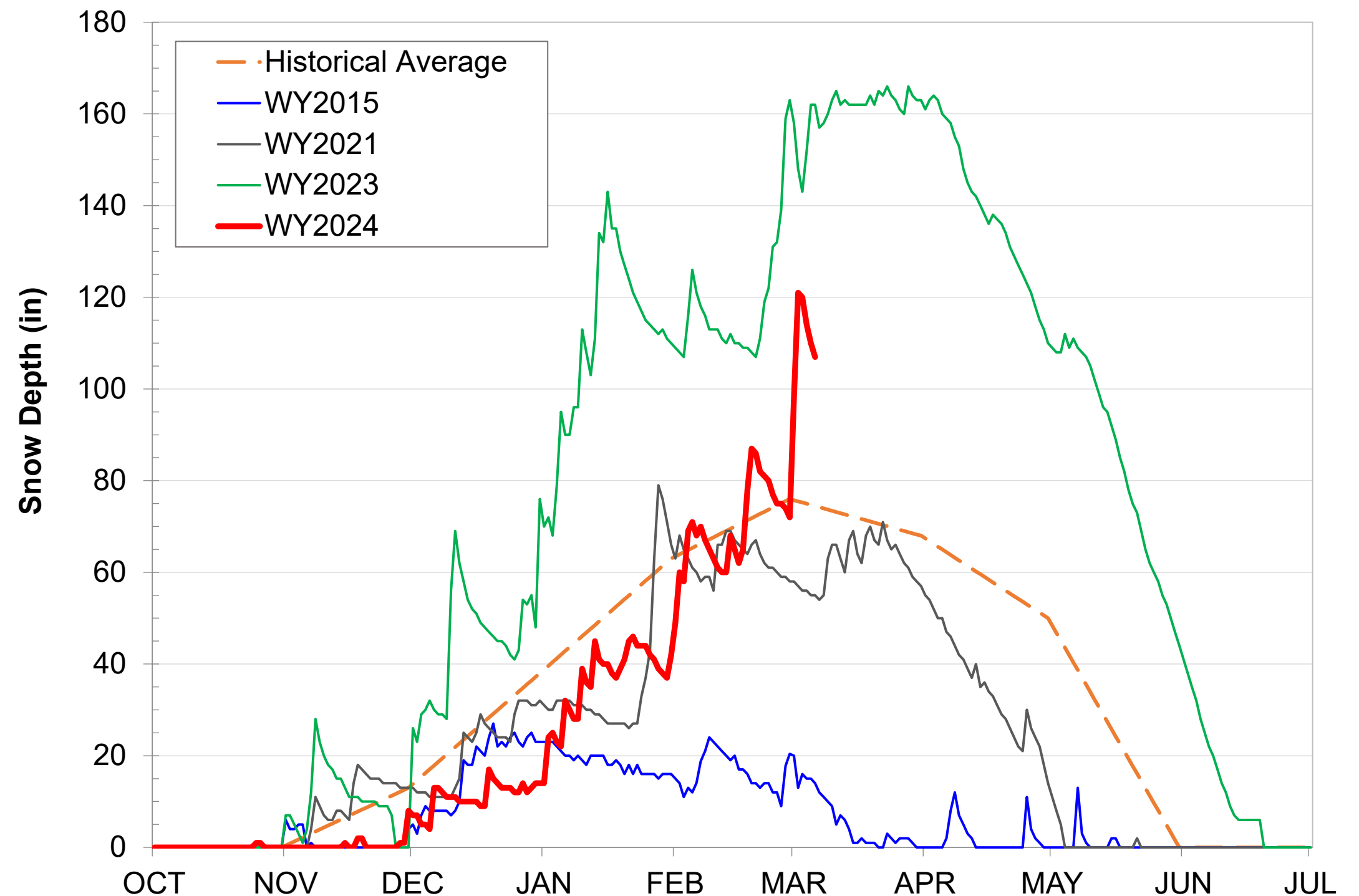
Caples Lake Snow as of March 6

Snow Depth

107" (144% of average)

Snow Water Content

29.10" (107% of average)



4-Day Snowfall Totals

February 29 – March 4
 Caples Lake = 49"

Top 4-Day Snow Reports

Sugar Bowl	126"
Soda Springs CalTrans	116"
Kingvale CalTrans	106"
Palisades Tahoe	96"
Dodge Ridge	89"
Sierra Snow Lab	75.2"
Boreal	74"
Eagles Lakes CalTrans	66"
Blue Canyon CalTrans	31"

Additional Snow Reports

Quincy* (3-day)	18-24"
Shingletown* (3-day)	5-10"
Arnold* (2-day)	10.5"
Camino* (2-day)	6.6"

* CoCoRaHS or Spotter Reports

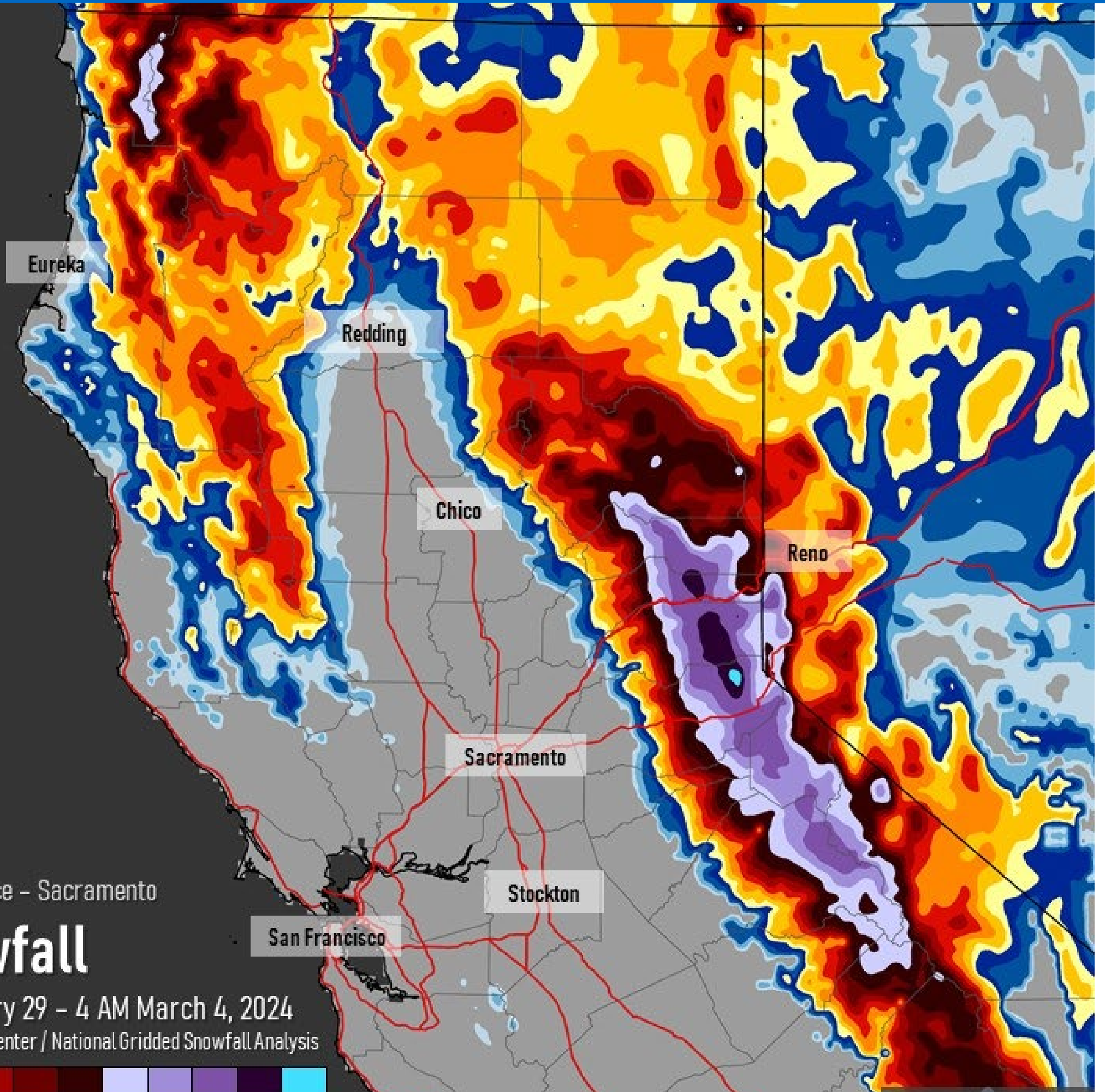


National Weather Service - Sacramento

Total Snowfall

4 Days: 4 AM February 29 – 4 AM March 4, 2024

Data Source: National Water Center / National Gridded Snowfall Analysis



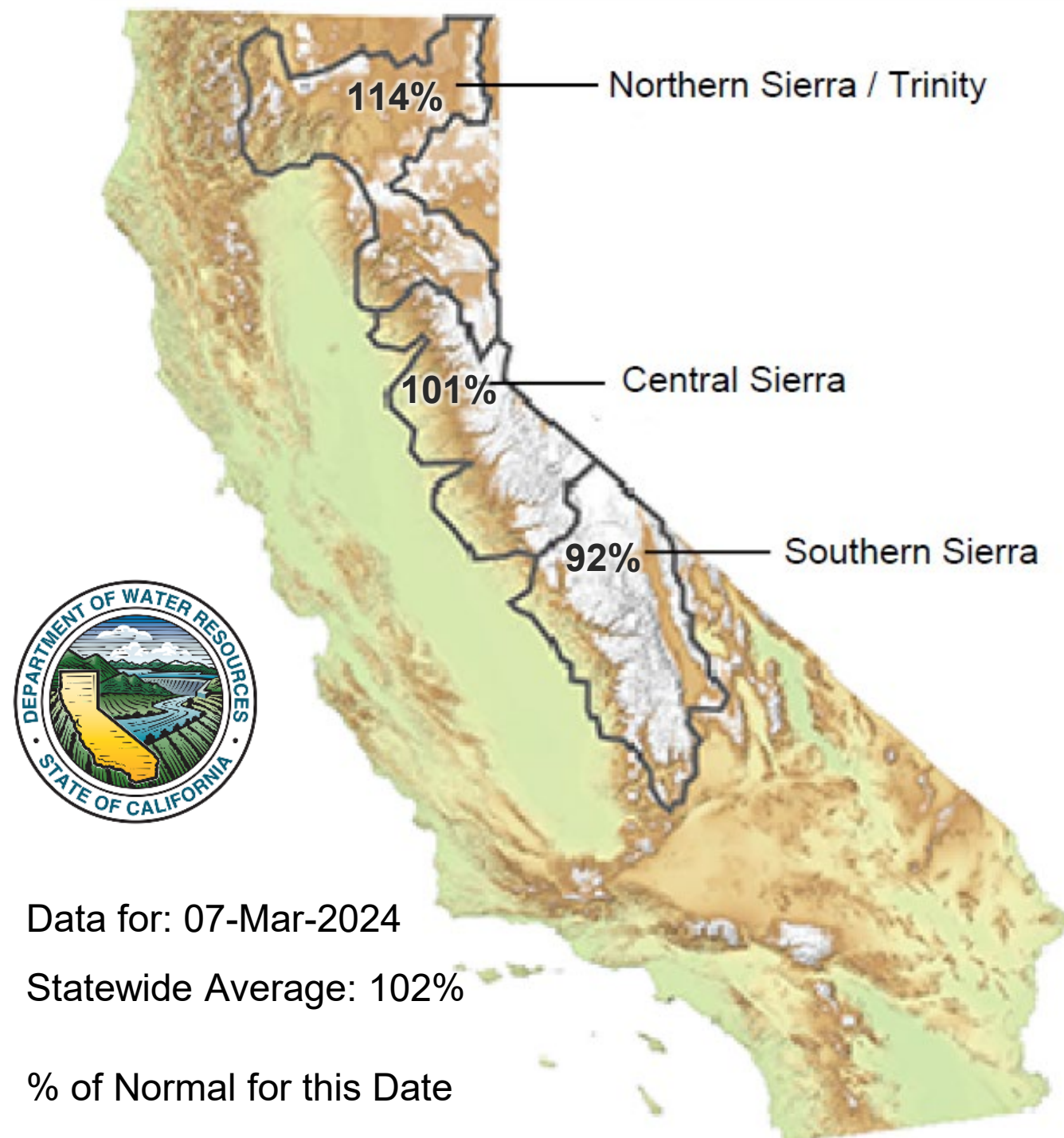
Issued March 4, 2024

California Water Supply



Snowpack as of March 7

Snow Water Equivalent:
101% in Central Sierra



Data for: 07-Mar-2024

Statewide Average: 102%

% of Normal for this Date



Caples Lake, J. Toone January 2024

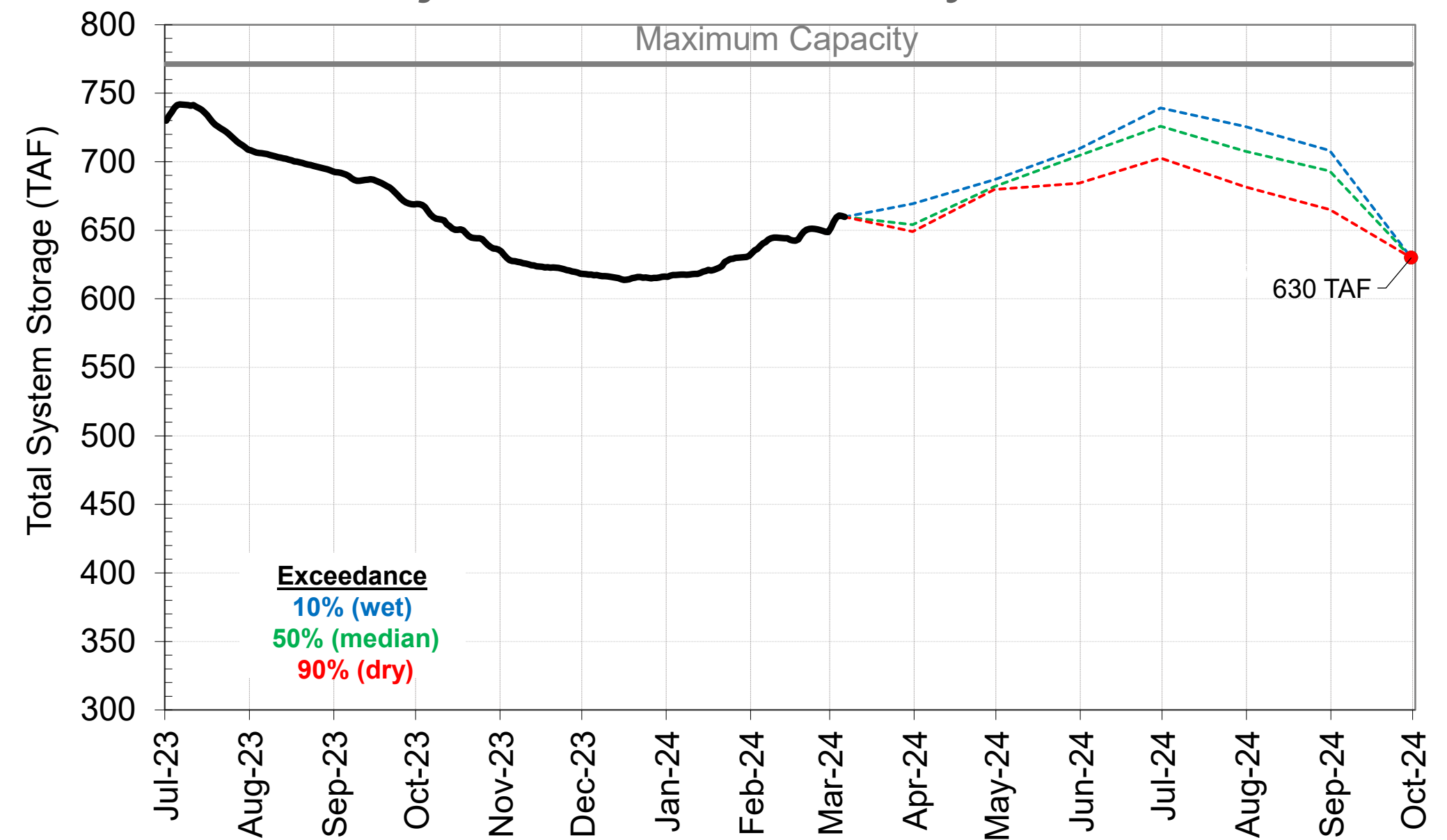
Water Supply Projections

Total System Storage as of March 6

Current: 660 TAF (111% of Average)

Reservoir	Current Storage, TAF	Percent of Average	Percent of Capacity
Pardee	183	99%	90%
Camanche	337	121%	81%
East Bay	140	104%	93%
Total System	660	111%	86%

Projected: 630 TAF by 9/30



TAF: Thousand Acre-Feet

Questions



Pardee Powerhouse, Jessica Wood January 2023



**FLOWING
INTO
THE
FUTURE**

WATER SUPPLY ENGINEERING DAILY REPORT

Wednesday, March 6, 2024

RESERVOIR STORAGE AND ELEVATION

	<u>WATER SURFACE</u>		<u>STORAGE</u>		<u>MAXIMUM CAPACITY</u>		Release Cfs	Spill Cfs
	Elevation Feet	+Gain -Loss	+Gain -Loss	Ac-Ft	Elevation Feet	Storage Ac-Ft		
<u>MOKELUMNE</u>								
Pardee	557.86	-0.38	182700	-790	567.65	203795	1332	0
Camanche	224.3	0.01	337260	70	235.5	417120	1301	0
<u>EAST BAY</u>								
Briones	574.84	0.02	58050	10	576.14	58960	0	0
Chabot	225.5	-0.01	9760	-10	227.25	10350	100	0
Lafayette	437.15	0.01	2850	0	449.16	4250	0	0
San Pablo	305.43	0.02	31360	20	313.68	37915	0	0
Upper San Leandro	458.46	0.02	<u>37740</u>	<u>20</u>	459.98	<u>38905</u>	70	0
<u>Total East Bay Res.</u>			<u>139760</u>	<u>40</u>		<u>150380</u>		
TOTAL SYSTEM STORAGE			659720	-680		771295		

DISTRIBUTION SYSTEM		
<u>DISTRIBUTION RESERVOIRS</u>		
	Storage MG	Operating Capacity
Today	342	720
Total Previous Day	<u>341</u>	
Total Change	1	
<u>WATER PRODUCTION AND DEMAND</u>	Million Gallons	Capacity MGD
Lafayette WTP	0	25
Orinda WTP	77	190
San Pablo WTP	0	30
Sobrante WTP	13.2	50
Upper San Leandro WTP	0	45
Walnut Creek WTP	25.2	90
<u>TOTAL SURFACE PRODUCTION</u>	115.4	430
Miscellaneous(Estimated)	0.4	
<u>TOTAL WATER PRODUCTION</u>	<u>115.8</u>	
Change in Distribution System	1	
Wash Water from Distribution Sys.	1.2	
<u>SYSTEM DEMAND</u>	113.2	
East-of-Hills Demand	21.4	
West-of-Hills Demand	91.8	

MOKELUMNE SYSTEM		
<u>AQUEDUCT DELIVERIES</u>		
	MG	Flow Conditions
Line 1	30.2	THROTTLE
Line 2	35.7	THROTTLE
Line 3	<u>37.6</u>	<u>THROTTLE</u>
TOTAL	103.5	160 Cfs
<u>FSCC to MOK AQUEDUCTS (Measured at Brandt), MG</u>		
Mok 1	0	
Mok 2	<u>0</u>	
	0 MG	
<u>RIVER FLOWS AND RELEASES</u>		
		Cfs
Mokelumne River Natural Flow		1278
Pardee Reservoir Inflow		1107
Pardee Release to Camanche Res.		1332
Pardee Release to JVID		0
Camanche Release to Mokel. River		1301
<u>PG&E CO. STORAGE (Acre-feet)</u>		
	Storage	Change
		Maximum Capacity
Old Reservoirs	6246	43
Salt Springs Res.	22032	197
Lower Bear Res.	<u>8312</u>	<u>100</u>
Total	36590	340

	<u>RAW WATER TRANSMISSION</u>	
	Ac-ft INPUT	Ac-ft DRAFT
Briones Res.	0	0
San Pablo Res.	4	51
U. San Leandro Res.	0	0
TOTAL	4	51

<u>STATION</u>	<u>PRECIPITATION (Inches)</u>				
	<u>THIS YEAR</u>			<u>AVERAGE YEAR</u>	
	<u>Today</u>	<u>This Month</u>	<u>Season to-Date</u>	<u>Season to-Date</u>	<u>Season Total</u>
USL WTP	0.04	1.32	17.37	19.5	25.33
Orinda WTP	0.05	0.79	22.44	24.59	32.06
Lafayette Reservoir	0.02	1.05	14.09	21.88	28.18
Walnut Creek WTP	0.1	2.03	15.8	18.11	23.02
Camp Pardee	0	2.61	15.5	15.65	21.56
Salt Springs P.H.	0	4.4	34	32.97	45.51
<u>CAPLES LAKE (7,830 FT) DATA</u>					
	Today	Average			
Snow Depth	107 Inches	74 Inches			
Water Content	29.1 Inches	27.2 Inches			

REMARKS
 WID Canal Diversion = 13 cfs
 Mokelumne River below WID = 1,064 cfs

PG&E data as of 4:00 pm previous date.
 All other data as of midnight.
 WTP capacities are sustainable rates.