



Water Supply Update

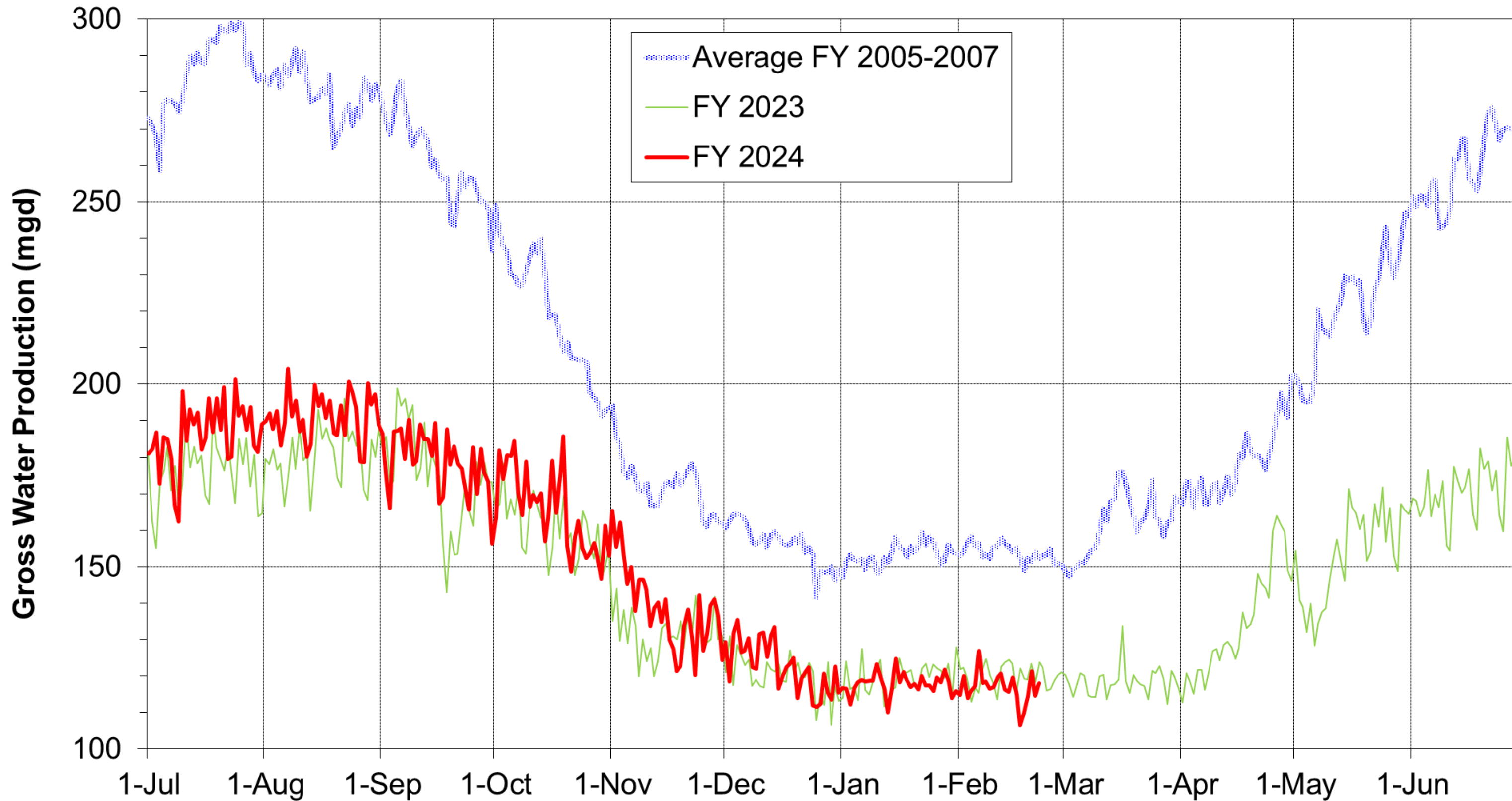
Board of Directors
February 27, 2024

Water Supply Briefing

- Current Water Supply
- California Water Supply
- Water Supply Projections

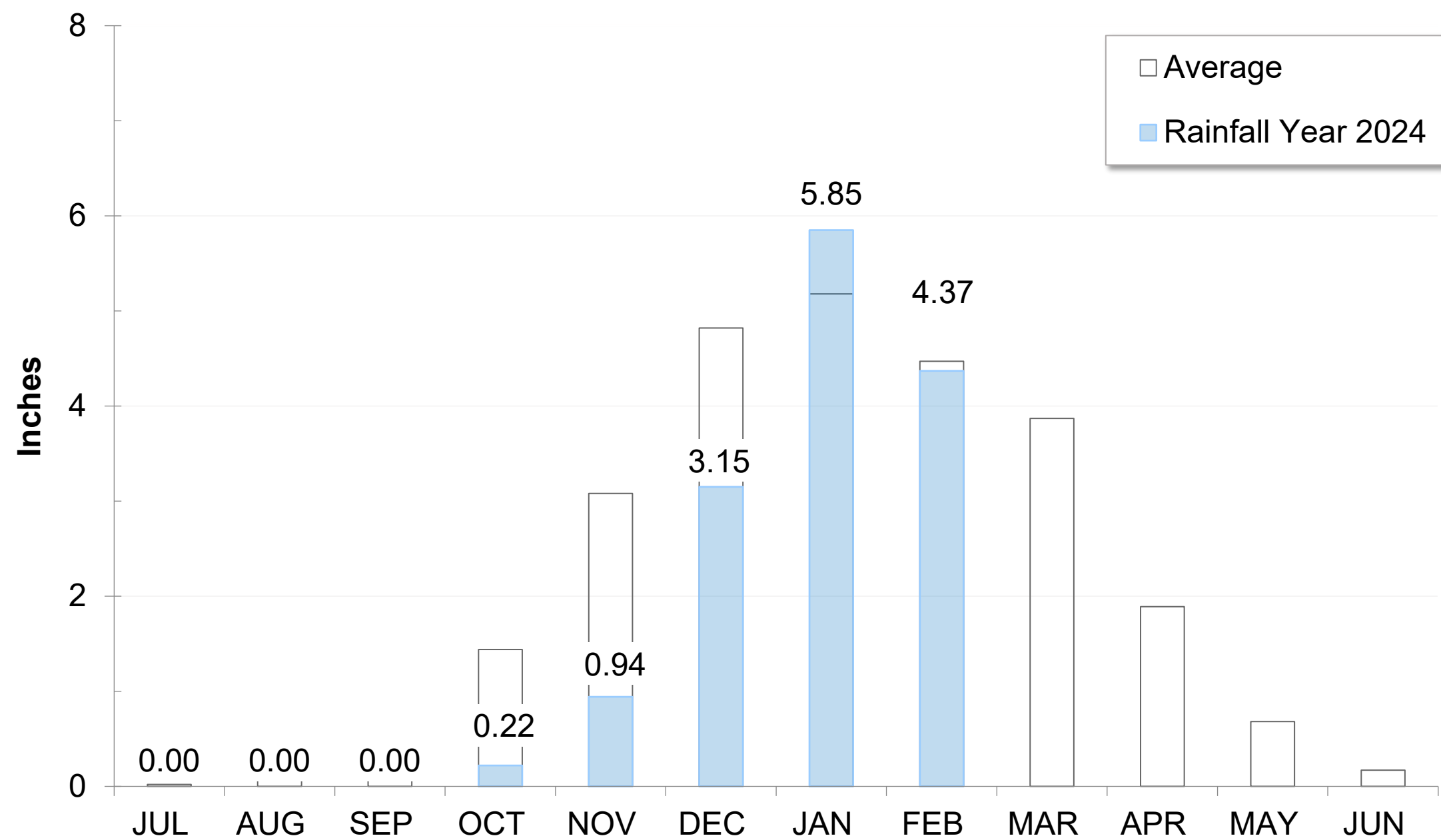
Current Water Supply

Gross Water Production



Precipitation as of February 22

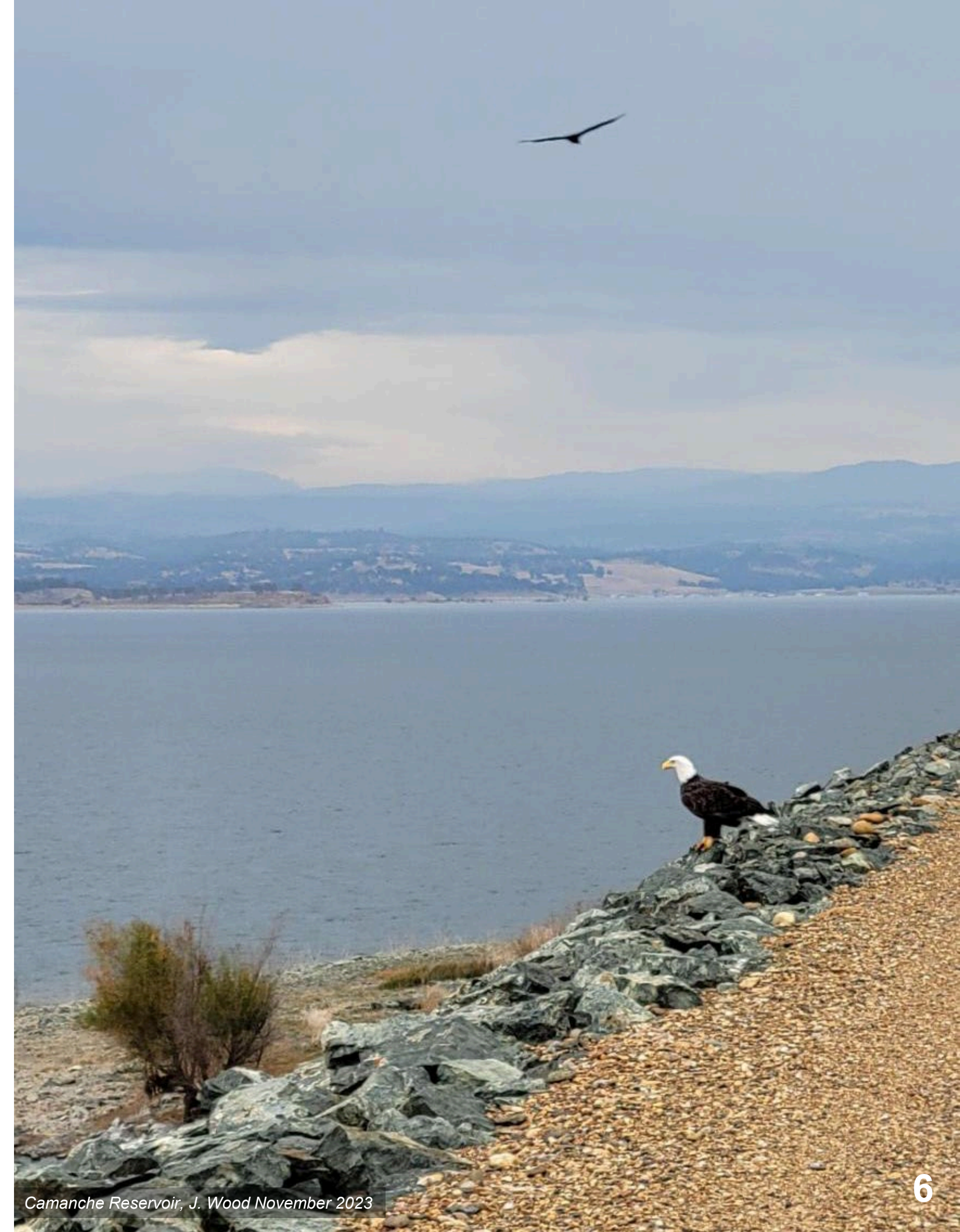
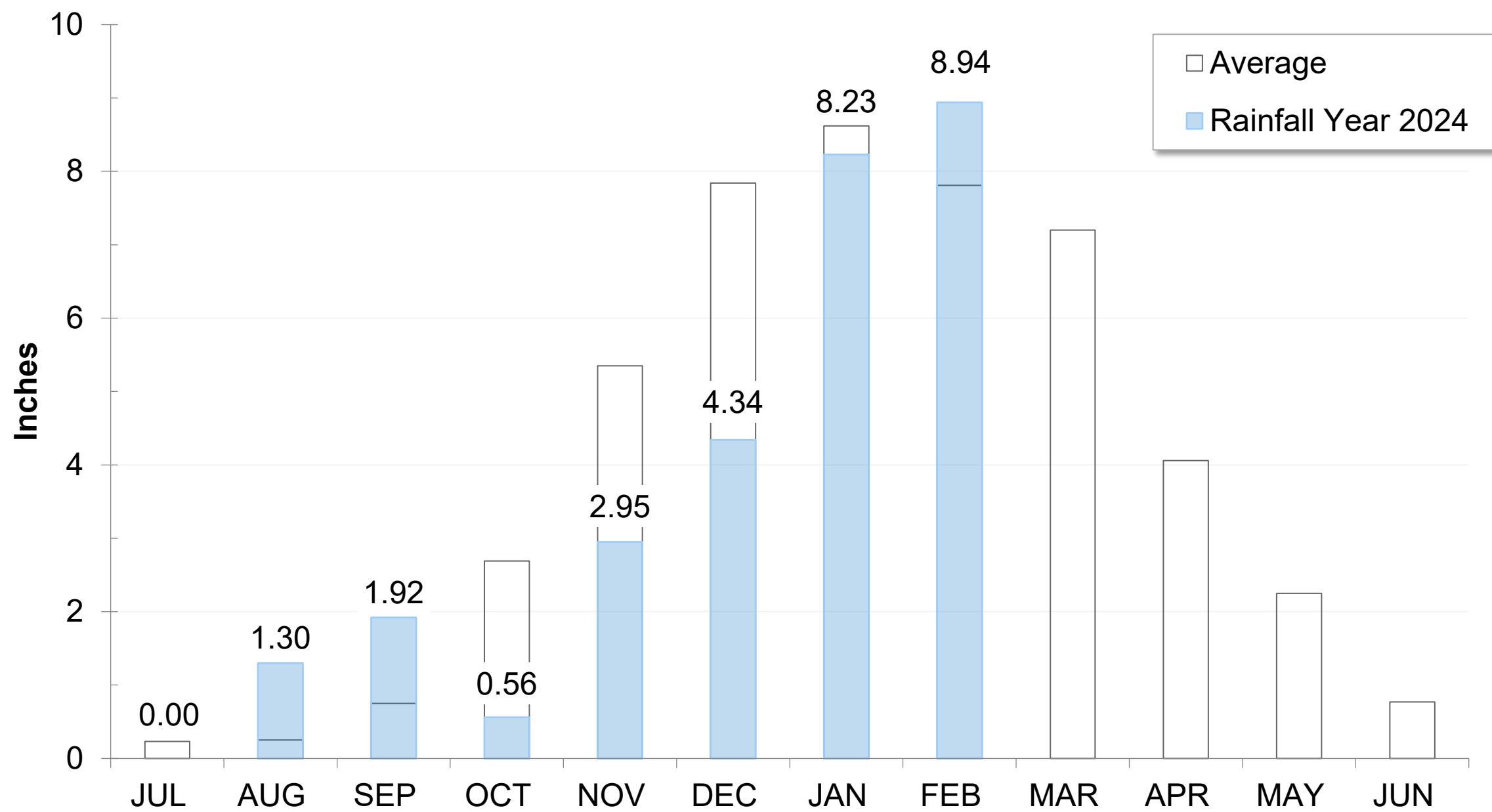
East Bay: 14.53" (77% of average)



San Pablo Reservoir Weather Station, D. Hansen, February 2024

Precipitation as of February 22

Mokelumne: 28.24" (88% of Average)



Camanche Reservoir, J. Wood November 2023

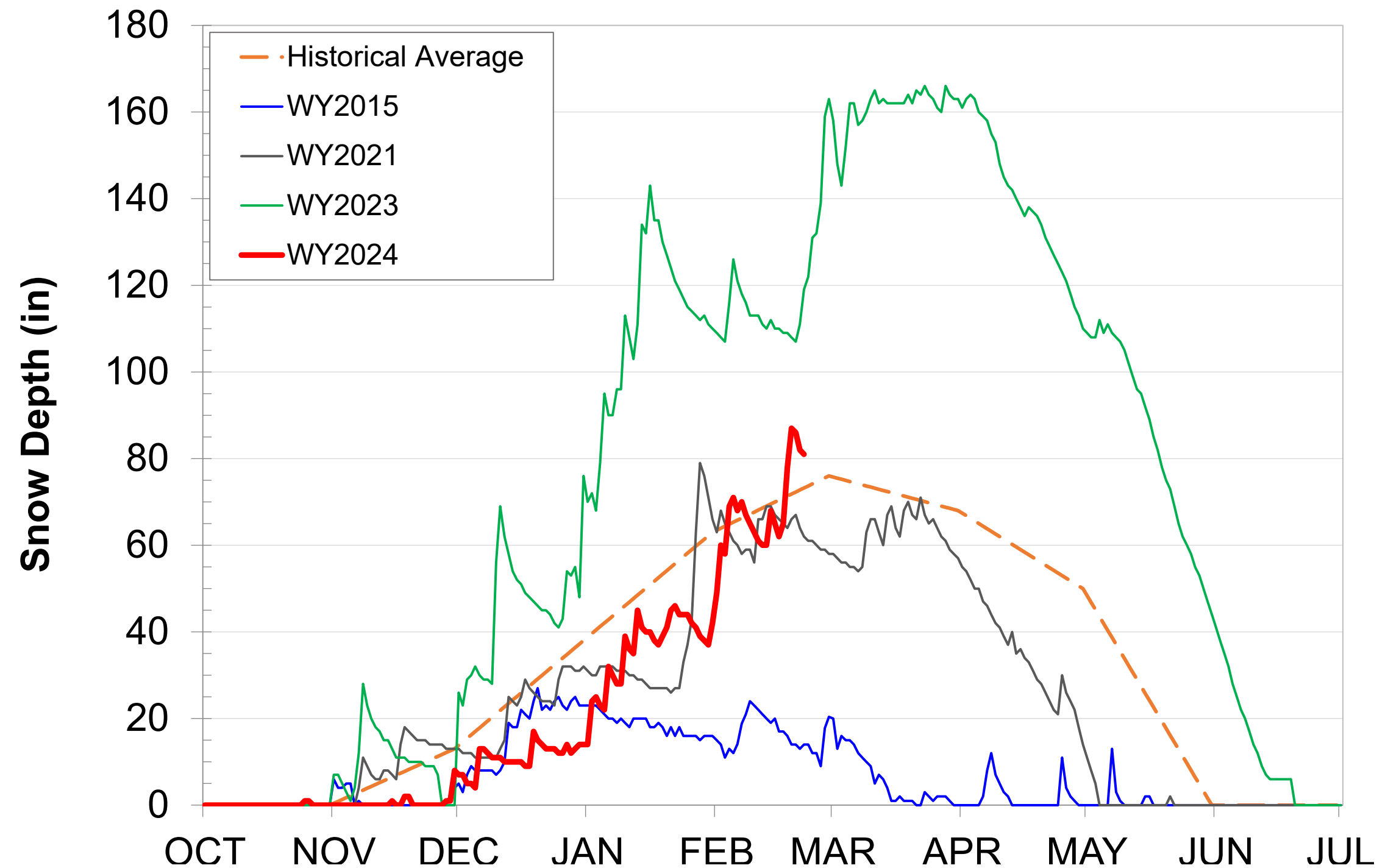
Caples Lake Snow as of February 22

Snow Depth

81" (111% of average)

Snow Water Content

21.51" (85% of average)

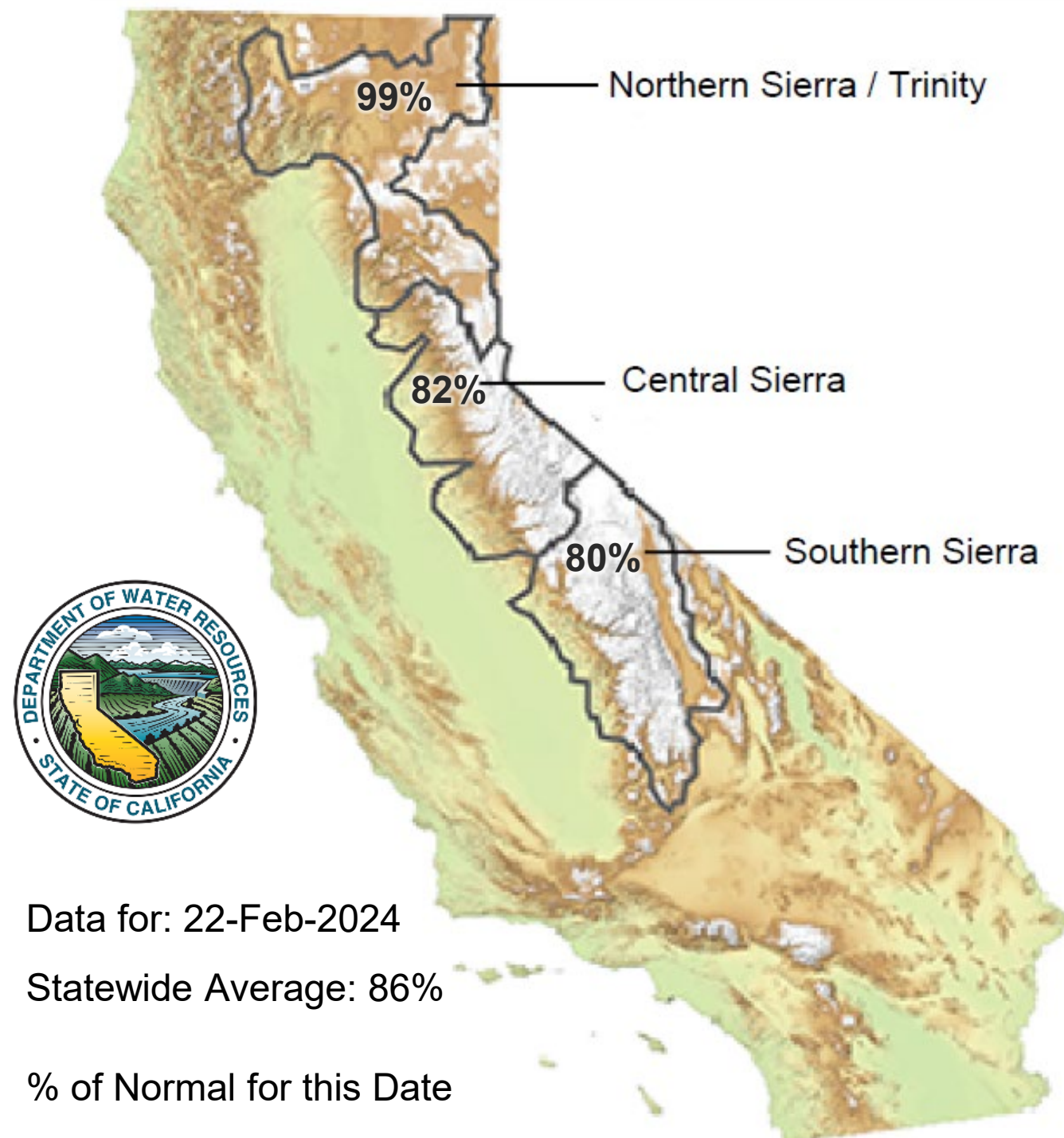


California Water Supply



Snowpack as of February 22

Snow Water Equivalent:
82% in Central Sierra



Data for: 22-Feb-2024

Statewide Average: 86%

% of Normal for this Date



Caples Lake, J. Toone January 2024

Water Supply Projections

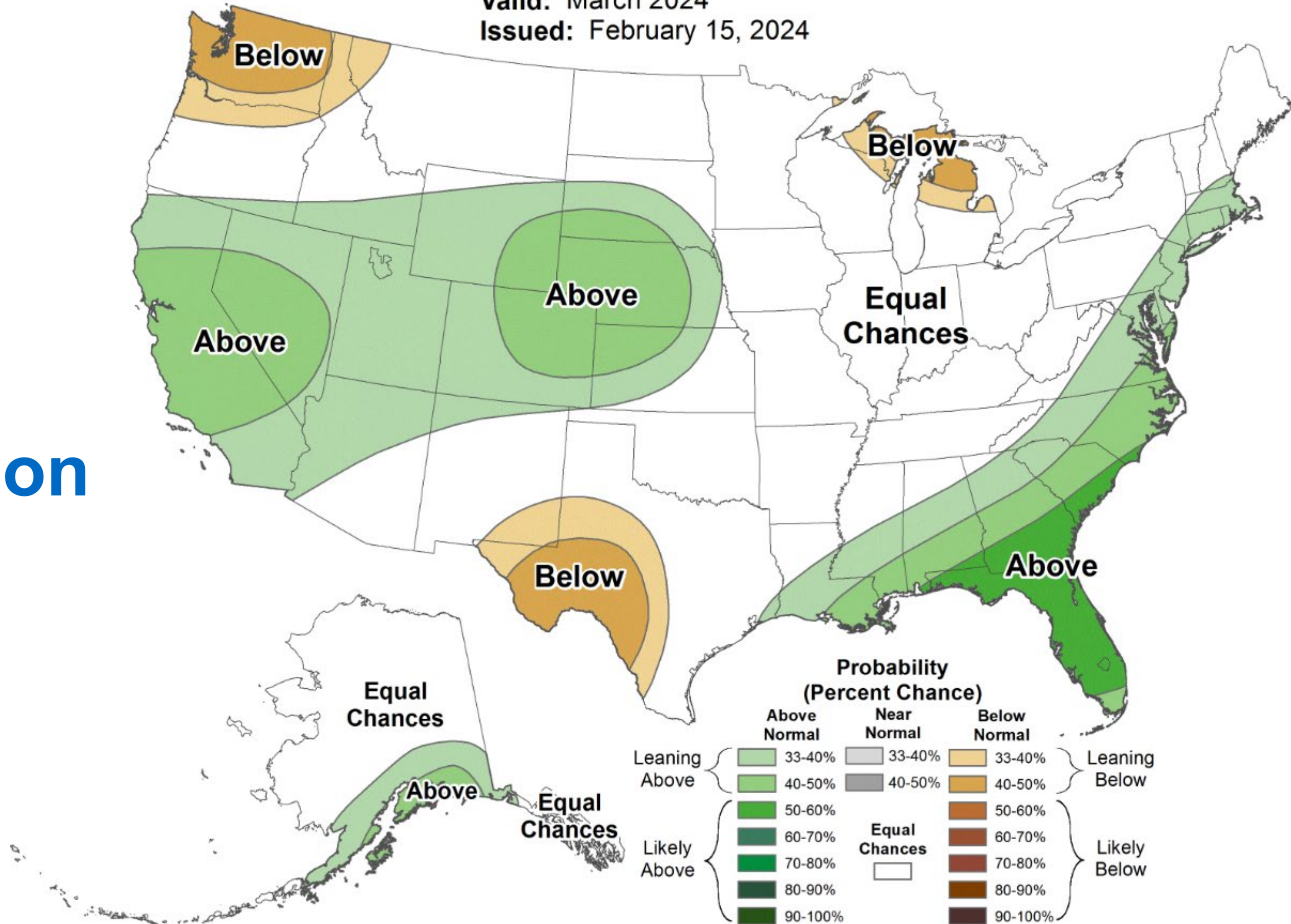


Monthly Precipitation Outlook



Valid: March 2024
 Issued: February 15, 2024

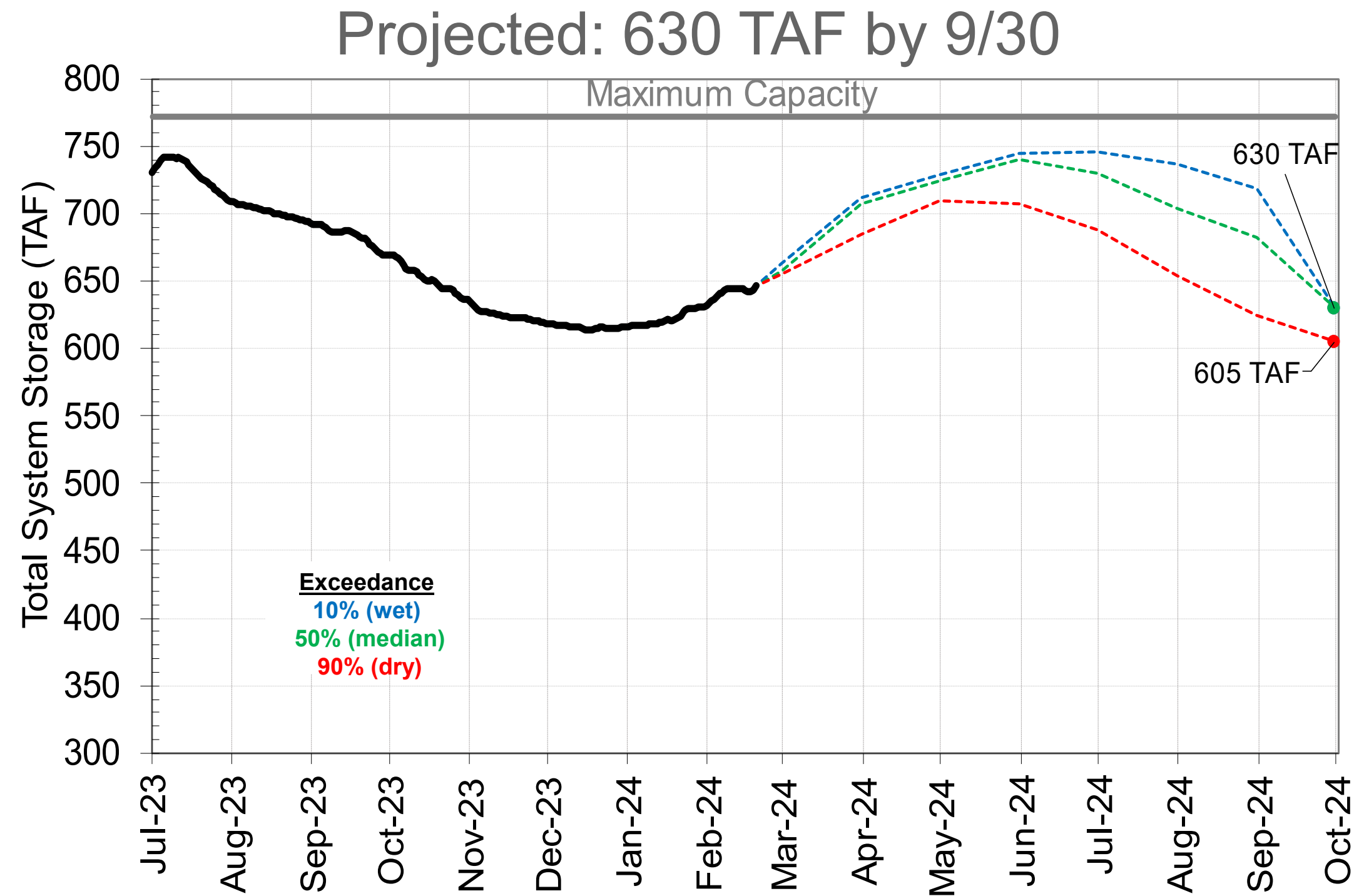
30-Day Precipitation Outlook (Climate Prediction Center)



Total System Storage as of February 22

Current: 651 TAF (112% of Average)

Reservoir	Current Storage, TAF	Percent of Average	Percent of Capacity
Pardee	179	98%	88%
Camanche	333	124%	80%
East Bay	139	105%	92%
Total System	651	112%	84%



TAF: Thousand Acre-Feet

Questions?



Camanche Reservoir Release, J. Toone – March 2023



**FLOWING
INTO
THE
FUTURE**

WATER SUPPLY ENGINEERING DAILY REPORT

Thursday, February 22, 2024

RESERVOIR STORAGE AND ELEVATION

	<u>WATER SURFACE</u>		<u>STORAGE</u>		<u>MAXIMUM CAPACITY</u>		Release	Spill
	Elevation	+Gain	+Gain		Elevation	Storage		
	Feet	-Loss	Ac-Ft	-Loss	Feet	Ac-Ft	Cfs	Cfs
<u>MOKELUMNE</u>								
Pardee	556.2	0.23	179270	470	567.65	203795	910	0
Camanche	223.66	0.03	332940	210	235.5	417120	801	0
<u>EAST BAY</u>								
Briones	574.39	0.02	57740	20	576.14	58960	0	0
Chabot	225.75	-0.08	9850	-20	227.25	10350	100	0
Lafayette	436.75	0.02	2810	10	449.16	4250	0	0
San Pablo	304.64	0.06	30760	40	313.68	37915	0	0
Upper San Leandro	458.3	-0.06	<u>37620</u>	<u>-40</u>	459.98	<u>38905</u>	70	0
<u>Total East Bay Res.</u>			<u>138780</u>	<u>10</u>		<u>150380</u>		
TOTAL SYSTEM STORAGE			650990	690		771295		

DISTRIBUTION SYSTEM			MOKELUMNE SYSTEM		
<u>DISTRIBUTION RESERVOIRS</u>			<u>AQUEDUCT DELIVERIES</u>		
	Storage	Operating		<u>MG</u>	<u>Flow Conditions</u>
	<u>MG</u>	<u>Capacity</u>	Line 1	30	THROTTLE
Today	345	720	Line 2	35.3	THROTTLE
Total Previous Day	<u>341</u>		Line 3	<u>36.4</u>	<u>THROTTLE</u>
Total Change	4		TOTAL	101.7	157 Cfs
<u>WATER PRODUCTION AND DEMAND</u>			<u>FSCC to MOK AQUEDUCTS (Measured at Brandt), MG</u>		
	Million	Capacity	Mok 1	0	
	<u>Gallons</u>	<u>MGD</u>	Mok 2	<u>0</u>	
Lafayette WTP	0	25		0 MG	
Orinda WTP	82	190	<u>RIVER FLOWS AND RELEASES</u>		
San Pablo WTP	0	30			<u>Cfs</u>
Sobrante WTP	20.3	50	Mokelumne River Natural Flow		1426
Upper San Leandro WTP	0	45	Pardee Reservoir Inflow		1316
Walnut Creek WTP	20.2	90	Pardee Release to Camanche Res.		910
<u>TOTAL SURFACE PRODUCTION</u>	122.5	430	Pardee Release to JVID		0
Miscellaneous(Estimated)	0.4		Camanche Release to Mokel. River		801
<u>TOTAL WATER PRODUCTION</u>	<u>122.9</u>		<u>PG&E CO. STORAGE (Acre-feet)</u>		
Change in Distribution System	4			Storage	Change
Wash Water from Distribution Sys.	0.4			Maximum	<u>Capacity</u>
<u>SYSTEM DEMAND</u>	118.1		Old Reservoirs	5921	-57
East-of-Hills Demand	23.2		Salt Springs Res.	17119	359
West-of-Hills Demand	94.9		Lower Bear Res.	<u>7953</u>	<u>-84</u>
			Total	30993	218

RAW WATER TRANSMISSION Ac-ft			PRECIPITATION (Inches)					
	<u>INPUT</u>	<u>DRAFT</u>	<u>THIS YEAR</u>		<u>AVERAGE YEAR</u>			
			<u>STATION</u>	<u>Today</u>	<u>This Month</u>	<u>Season to-Date</u>	<u>Season to-Date</u>	<u>Season Total</u>
Briones Res.	0	0	USL WTP	0	4.54	16.16	17.75	25.33
San Pablo Res.	0	63	Orinda WTP	0	6.04	21.33	22.26	32.06
U. San Leandro Res.	0	0	Lafayette Reservoir	0	4.2	12.9	19.85	28.18
<u>TOTAL</u>	<u>0</u>	<u>63</u>	Walnut Creek WTP	0	4.38	13.38	16.39	23.02
<u>REMARKS</u>			Camp Pardee	0	4.38	13.03	14.12	21.56
WID Canal Diversion = 0 cfs			Salt Springs P.H.	0.01	9.93	28.6	29.92	45.51
Mokelumne River below WID = 728 cfs			<u>CAPLES LAKE (7,830 FT) DATA</u>					
				Today	Average			
PG&E data as of 4:00 pm previous date.			Snow Depth	81 Inches	73 Inches			
All other data as of midnight.			Water Content	21.5 Inches	25.4 Inches			
WTP capacities are sustainable rates.								